



BERRY TOWN CRIER

SHOALHAVEN EDUCATION FUND REACHES AN EXTRAORDINARY MILESTONE

PAGE 8

ROTARY INVITES YOU TO UNLEASH YOURSELF TO JOIN THEM AT THE PUB

PAGE 4

BERRY & DISTRICT HISTORICAL SOCIETY HAS A NEW DONATION

PAGE 17

BERRY SHOW SCHEDULE 2026 SEE THE EXCITING LINE-UP

PAGES 6-7

BERRY LIBRARY HAS PLENTY OF VARIETY FOR BOOK WORMS

PAGE 7

ZONTA LOOKS FORWARD TO INTERNATIONAL WOMEN'S DAY

PAGE 9



AUSTRALIAN RED CROSS BERRY BRANCH DELIVERS CHRISTMAS CHEER

PAGE 19



THE TOWN CRIER IS PRODUCED
BY THE BERRY ALLIANCE INC.

The purpose of the publication is to communicate to the people of Berry about community activities and aims to share information amongst community groups, individuals and the community. A community that is well informed with a range of different opinions makes better decisions and that makes for an even better community that we can continue to be proud of.

Contributions are from the Berry Community who have news and information for our readers.

The opinions expressed in the Town Crier are not necessarily those of the Berry Alliance or of the Editors.

MEMBERSHIP:

Membership of the Berry Alliance costs \$15 per annum and is open to Berry community groups registered with the Berry Alliance as well as individuals.

To join please write to Berry Alliance,
PO Box 202 Berry NSW 2535
or email: info@berryalliance.org.au

TOWN CRIER EDITORIAL BOARD:

Martin Aicken
Nancy Davies
Rick Gainford
Holly Landgren
Dr Fiona Mackie
Guy Mainsbridge

The closing date for our March issue will be Wednesday 18th February 2026 at 5pm. Please submit prior to this date if it is your first submission. Material can be submitted via e-mail to:

towncrier@berryalliance.org.au

Phone 0428 037 572

Town Criers can be downloaded for free from www.berryalliance.org.au or our Facebook Page: Berry Town Crier.

Nancy Davies - Berry Town Crier

THE TOWN CRIER IS PUBLISHED MONTHLY, WITH A CIRCULATION OF 2,400 COPIES AS WELL AS ELECTRONICALLY BY EMAIL OR ON OUR WEB SITE



FOLLOW US ON FACEBOOK

PRINTED BY **Berry Printers**
CONCORDE WAY BOMADERRY PH: 4422 3774
PRINTED ON RECYCLED PAPER

Seasons Greetings from the Editorial Committee



The Committee sends you and your families our very best wishes for a happy, healthy and safe 2026.

Our key message has always been that "a well informed community, will always make better decisions and help create a better place to live for everyone."

A community that shows respect to others even when you disagree with them on an issue is something that we all want to maintain.

Acting together and giving respect and receiving respect back for your views is always worth striving for.

Celebrate the great and wonderful things that, as a united community we have helped to achieve in the past and are continuing to achieve.

Look at articles in the Town Crier from some of our wonderful community groups of volunteers such as

Pink Up Berry with their record local fundraising. Congratulations to Deb and her team!

Rotary Club of Berry with their vision and drive to create a great Dog Park in Berry. Congratulations to Rotary. [See page 4 of this issue.](#)

The Shoalhaven Education Fund who this year are celebrating a record \$1 Million raised and expended in grants that help their recipients

gain an education. Congratulations to Sophie and her great team! [See page 8 of this issue.](#)

The David Berry Hospital Auxiliary Committee led by Irene Birks and Margaret Walsh for their championing the protection and retention in public hands of the David Berry Hospital. [See page 19 of this issue.](#)

The Berry and District Historical Society for their preservation of a lot of the history of Berry and their talks run on the earlier, First Nations history of Berry with Uncle Gerry Moore, Lisa Ogle and others. Congratulations Margaret Cullity and Gail Paton and their Committee. [See page 17 of this issue.](#)

There are also:

all our **Volunteer and other first responders.** We are fortunate to have them and proud of them all.

Fire Brigades, Ambos, Police and others.

The strong charities and their leaders – A Taste of Paradise Farm with Tim and all their team; SALT Ministries with Pete and Megan and all their team. Plus others.

Meals on Wheels, Sporting clubs, volunteers everywhere.

Where do you stop? These are just a sample of what we are proud of.

Congratulations and thank you all.

Berry Alliance Town Crier Committee

Council and Environmental Sustainability

Introduction – The Berry Alliance Town Crier have a strong focus on Environmental Sustainability with our Committee member Holly Landgren writing many articles and providing a lot of information.

Here is a precis released by Council recently that may assist you. We hope so. To use the hyperlinks go to the on line copy of this edition of the Town Crier and click through on them.

Berry Town Crier

Environmental sustainability

These links refer to content below

- Solar and Energy Projects
- Sustainable Living Program
- Responding to Climate Change
- Our Emissions
- Water Recycling and Efficiency
- Transforming Waste

Solar and Energy Projects

Council has committed to the target of reducing operational carbon emissions to net zero by 2035. Sourcing and generating renewable energy is a key part of this transition.

In 2004, Council installed its first solar PV system on the Berry Waste Depot. Today, Council has over 55 assets with almost 1,276 kW of solar PV systems installed. These systems generate an estimated 1,500,000 kWh of renewable electricity each year.

Recent projects

- In 2023 Council committed to switch 100% of its streetlights to energy-saving LEDs, delivering a key commitment of Council's Sustainable Energy Strategy. This project is expected to save 1,500 tonnes of CO2 equivalent emissions every year.
- In 2023 Council installed a 99.75kW solar PV system at the Ulladulla Civic Centre under its Revolving Energy Fund. Along with an energy

efficient lighting upgrade, this project is saving an estimated 129 tonnes of CO2 equivalent emissions every year.

- In 2023 Council led a Power Purchase Agreement with neighbouring Kiama and Shellharbour Councils to secure reliable and affordable renewable energy from wind and solar farms in regional New South Wales. Council is currently utilising 25% renewable electricity through this agreement to power its large energy sites, and will continue to increase its use of renewable electricity, adopting 50% renewables by 2025 with a goal to adopt 100% renewables for all of its electricity needs by 2030.

Renewable energy targets

To guide our actions in reducing energy and emissions, Council's Sustainability and Climate Policy outlines a commitment to achieve net zero emissions by 2035, with an interim target of a 50% reduction by 2028.

Council's Sustainability and Climate Action Plan and Sustainable Energy Strategy include a number of key commitments to help achieve this goal, including to:

- Upgrade all streetlights to energy saving LEDs by 2023.
- Source or generate electricity supply for our operations from renewable energy sources, with interim targets of 25% renewables by 2023 and 50% by 2030.
- Support our community to transition to clean renewable energy and install rooftop solar panels, with a target of 33% of all dwellings by 2025.

Related Information

- Major projects
- Recycling and waste
- Make a plan to go electric
- Download our Shoalhaven Sustainable Living Guide
- Sustainability and Climate Action Plan 2023 - 2027

BROUGHT TO YOU BY THE
BERRY ALLIANCE TOWN CRIER



CELEBRATING ANOTHER SUCCESSFUL YEAR

The BMS enjoyed another successful year with increased membership, increased jobs to complete and two successful sales, one in Broughton Mall and the other combining with the Berry Uniting Church car boot sale in November.

In addition, Rob Blissett was appointed as our new Chair replacing Steve Ford who had held the position for 3 years. On behalf of the members a special thanks to Steve for an excellent job during this period. Our Scholarship programme in conjunction with the Uniting Church continued with Bomaderry, Nowra and Shoalhaven High Schools once again was well received by the schools and the students. We look forward to continuing this programme in 2026.

If you are interested in joining our Shed or just calling in to see what we get up too, we are open on Tuesdays and Thursdays at 146 North Street Berry.

Richard Wiseman, Publicity Officer

Members of the Berry Men's Shed Christmas lunch



Redberry Quilters are starting off the 2026 year on Friday 23rd January with a sewing morning where they will be making items for the upcoming Berry Quilt Show, to be held on the first weekend in May. The show will feature a shop of hand-made items ranging from quilts, to all sorts of lovely hand-made gifts and practical items.

2026 is a big year for Redberry Quilters. In addition to the bi-annual Quilt Show, a range of guest speakers have been lined up for the monthly meetings,

held on the 4th Friday of each month. Everyone, (not just members) are welcome to come to these, starting at 9.30 in St. Luke's Hall, Berry. There are also two weekend workshops planned for this year, one with well-known quilter Rachel Daisy in July and one with quilter and embroidery artist Karen John in November. Spaces are limited in these workshops, but anyone who is interested should get in touch with Redberry.

Redberry sewing mornings – 2nd Friday of the month

Redberry meeting and Guest Speaker mornings – 4th Friday of the month. Both held at St. Luke's Hall, Princess St, Berry. All welcome!

New schedule for Council meetings

PUBLISHED ON 12 JANUARY 2026

Ordinary Meetings will move from fortnightly to the fourth Tuesday of each month with the introduction of a new Code of Meeting Practice in 2026.

The change follows the release of the Model Code of Meeting Practice by the Office of Local Government in August last year which required all NSW councils to incorporate mandatory provisions by 1 January 2026.

Mayor Patricia White said the aim of the new Model Code is to promote transparency, consistency and community confidence in Council decision making.

"The biggest change is the move to monthly meetings which will give Councillors more time to read complex reports and better engage with community feedback before decisions are made," Cr White said.

"The other major change sees the introduction of a Public Forum one week before each meeting where members of the public can speak on items to be determined by the Council at the next Ordinary Meeting. Deputations will no longer be part of the Ordinary Meeting agenda," she said.

"While there will be fewer meetings each year, I'm looking forward to better quality decision making and better outcomes for the community as a result of the more streamlined scheduling of meetings."

The first Ordinary Meeting for 2026 will be held on Tuesday 27 January

with the business papers – the items to be considered by Councillors – available from Thursday 15 January.

Key changes in the new Code of Meeting Practice and Public Forum Policy for 2026 include:

- Greater lead time for the Ordinary Meeting business papers (agenda) to be made public, with papers published on Council's website on a Thursday, 12 days prior to the meeting.
- Removal of Deputations from within the Ordinary Meeting and replaced with a live-streamed Public Forum the week before the Ordinary Meeting.
- Councillor participation via audio visual link during Council meetings will be restricted to specific circumstances and subject to permission being granted by resolution of the Council.
- Discriminatory behaviour is now explicitly defined as disorderly conduct, empowering the Chair to act on inappropriate gestures or behaviour of those in attendance, not just verbal comments.
- No pre-meeting briefing sessions for Councillors.

FOR THE UPCOMING MEETING DATES AND MINUTES HEAD TO COUNCIL'S WEBSITE.



BROUGHT TO YOU BY THE BERRY ALLIANCE TOWN CRIER



Join us for a fun evening to watch ABC's new sit-com "THE DOG PARK" - premiering Sunday 1st February at 8.30pm. Pop down to the pub, grab a drink and bite to eat, and a casual chat before the show kicks off.

All funds raised go towards the *Rotary Dog Park-Off Leash Area* which is a community-led project to be constructed by the Rotary Club of Berry and funded with the help of community support.

ABC
THE DOG PARK

MEET UP

GREAT SOUTHERN HOTEL, BERRY
SPORTS BAR

 **SUN 1st FEB 2026: 7.30 PM- 9 PM**





\$20 inc gst

**INCLUDES 1 PP
"HOUSE" WINE, BEER
OR SPARKLING**

**EVERYONE GOES IN THE DRAW TO WIN
A BRICK PAVER WITH YOUR NAME / DOGS NAME,
AT THE BERRY DOG PARK - VALUE \$150**

**JOIN US TO WATCH THE PREMIERE
OF THE ABC'S NEW SIT-COM
"THE DOG PARK" - AIRS 8.30 PM**

THEN EVERY SUNDAY UNTIL 8 MARCH FOR ALL 6 SHOWS



Rotary
Club of Berry 

**DOGS
WELCOME**

Help make a difference - support ROTARY

Berry Show SPONSORS

Please thank our community sponsors when you see them or make a purchase

SUPREME CHAMPION SPONSOR

McGoldrick

E S T A T E A G E N T S

GRAND CHAMPION SPONSORS

BERRY GETAWAYS
whatever your heart desires



BondLifestyle
PROPERTIES

Curran
PLUMBING + ELECTRICAL

**LINNAEUS
COLLECTION**
BERRY NSW



CHAMPION SPONSORS

BROUGHTON.
landscapes. design / construct / maintain

**GREAT
SOUTHERN
HOTEL**

MILKWOOD
COUNTRY RESORT

**Shorebreak
Finance**

RayWhite

webDesign
SOLUTIONS NSW

BLUE RIBBON SPONSORS

A & R Contracting	Black Cat Gas	The Hill Bar & Kitchen	Nowra Truck & Tractor	Maker Consulting Services
ARP Surveyors	Bomaderry Dental Surgery	Hollaback Park	Orford Rural Contracting	Margaret & Colin Sharpe
Barrett Mobile Automotive	Paul Camelleri	Horseland Yallah	Kathryn Payne	McIntosh Farming Trust
Berry IGA	CKB Civil	Illawarra Equine Centre	Fiona Phillips MP	The Outlaws
The Berry General Store	Daily Grind Coffee	Il Locale	Raine & Horne Berry	Shoal Plumbing
Berry Pharmacy	Glowire Berry Boutique	Innovate Energy	Ray White Estate Agents	Skip
Berry Rural Store	Electrical	Lactalis	Berry	Socials for Locals
Berry Vet Clinic	The Greenacre Family	MI Engineers	Geoff & Julie Rosenberg	TJ Fahl Contracting
Berry Village Boutique	The Harris Family	Mountain Side Meats	Rural Bitumen	Toohays
Motel	Jim Hindmarsh & Son	New Horizon Properties	Ryan's Turf	Louise Walsh & Dave Jordan
BHI Architects				

RED RIBBON SPONSORS

AIS Certifiers Berry Boer Berry Smash Repairs Karren Blades Allison Hadley John McGuire & Associates Vella Stock Feeds

WHITE RIBBON SPONSORS

The Arbour Berry The Berry Barn Bishops South Nowra Greenland Mine Services Gutter Knight Illawarra Handmade Web Parnell + Brien Solicitors Col Walsh & Family

A HUGE THANKS TO ALL OUR SPONSORS, SUPPORTERS & VOLUNTEERS!

Berry Show WHAT'S ON

Friday & Saturday Program

Events, demos and competitions across both days of the Show...



FRIDAY DAYTIME
30TH JANUARY 2026

SHOWJUMPING

FROM 7.30AM

AND HORSE CLASSES

FROM 9AM (RING 2,3 AND 4) 10AM (RING 1)

SEE SCHEDULE FOR
TIMES & INFO...

PAGES 30-42 - HORSES
PAGE 44 - SHOWJUMPING



DAIRY CATTLE JUDGING

FROM 8.30am

ON THE CATTLE
LAWN

SEE SCHEDULE FOR
MORE INFO PAGES 48-52

FROM 9am-7pm PAVILION

SEE ARTS AND CRAFTS, VEGETABLES, JAMS AND PRESERVES,
FLOWERS, PAINTING, PHOTOGRAPHY AND MORE
SEE SCHEDULE FOR MORE INFO PAGES 66-86



FROM 10am POULTRY

RARE BREEDS AND KIDS ACTIVITIES IN THE
BERRY GETAWAYS POULTRY PAVILION

SEE SCHEDULE FOR
MORE INFO PAGES 62-64

IN THE WOODCHOP ARENA
REGISTER FROM 3.30pm

ANTHONY BENNETT MEMORIAL

CHILDREN'S PET SHOW

SEE SCHEDULE FOR
MORE INFO PAGES 87



AND FROM 5pm WOODCHOPPING

UPDATED SCHEDULE FOR 2026!

SEE SCHEDULE FOR
MORE INFO PAGES 46-47



SCAN QR CODE AND DOWNLOAD
THE 2026 SHOW SCHEDULE!

MC GOLDRICK MAIN ARENA FRIDAY AFTERNOON AND EVENING ENTERTAINMENT

FRIDAY ENTERTAINMENT STARTS FROM AROUND 5.30PM

HORSE SPORTING EVENTS

HORSE EVENTS START AT 7.30AM AND FINISH AT 5.30PM

GUY MCLEAN

FIRST TIME TO SEE
THIS SHOW TONIGHT!

HORSEMANSHIP DISPLAY - BACK FOR 2026

MAD-STYLE-MOTO

INSANE MOTOBIKE TRICKS - BACK FOR 2026

ENTRY
OPEN

BERRY BUCK OFF

JOIN IN THE FUN - SEE SCHEDULE PAGE 88 FOR ENTRY INFO

GUY MCLEAN

SECOND CHANCE TO SEE
THE SHOW TONIGHT!

HORSEMANSHIP DISPLAY - BACK FOR 2026

ENTRY
OPEN

BERRY BUCK OFF - FINALS

JOIN IN THE FUN - SEE PAGE 88 OF SCHEDULE



ENTRY
OPEN

RODEO

2 HRS OF ACTION -
A DISPLAY OF BALANCE, BRAVERY
AND SPLIT-SECOND TIMING,
FOR ENTRY INFO - SEE SCHEDULE
PAGE 60



DEMOS AND ATTRACTIONS

FROM 10am Both Days

GUY MCLEAN WORKSHOPS

ANIMAL NURSERY AND REPTILE ENCOUNTERS

TRADE EXHIBITS AND FOOD TRUCKS

DEMONSTRATIONS - COW MILKING,

HAWKESBURY WORKING SHEEP DOGS,

SHOALHAVEN BEE KEEPERS ASSOCIATION

FOOD AND REFRESHMENTS

SHOW BAGS AND
SIDESHOW ALLEY

FIRST AID
STATION
RINGSIDE
OPPOSITE
THE PAVILION

SEE SIGNAGE AT SHOWGROUND
FOR TIMES OF DEMOS

COMPETITIONS - OPEN TO ALL!

GRAB SOME MATES FOR THE YOUNG FARMER CHALLENGE OR HAY-
STACKING, BRING YOUR DOG FOR THE HIGH JUMP, OR TAKE YOUR
CHANCES ON THE BERRY BUCK OFF MECHANICAL BULL. NO SKILLS
REQUIRED, JUST ENTHUSIASM AND A MILDLY QUESTIONABLE SENSE
OF CONFIDENCE. STEP IN AND HAVE A GO!

SCAN QR CODE AND TURN TO PAGE 88 FOR DETAILS...

SEE YOU AT THE BERRY SHOWGROUND - FRIDAY 30 & SAT 31 JANUARY

SATURDAY DAYTIME
31ST JANUARY 2026



MC GOLDRICK MAIN ARENA
SATURDAY AFTERNOON ^{AND}
EVENING ENTERTAINMENT

SATURDAY ENTERTAINMENT STARTS FROM AROUND 3.30PM

GUY MCLEAN FIRST CHANCE TO SEE
THE SHOW TONIGHT!
HORSEMANSHIP DISPLAY - **BACK FOR 2026**

ENTRY
OPEN

YOUNG FARMER CHALLENGE

JOIN IN THE FUN - SEE SCHEDULE PAGE 88 FOR ENTRY INFO

ENTRY
OPEN

BEAUT UTE COMPETITION

JOIN IN THE FUN - SEE SCHEDULE PAGE 88 FOR ENTRY INFO

HAYMAKING DEMO

WATCH AS GRASS IS TURNED INTO HAY

MAD-STYLE-MOTO FIRST CHANCE TO SEE
THE SHOW TONIGHT!

INSANE MOTOBIKE TRICKS - **BACK FOR 2026**

GUY MCLEAN SECOND CHANCE TO SEE
THE SHOW TONIGHT!

HORSEMANSHIP DISPLAY - **BACK FOR 2026**

ENTRY
OPEN

DOG HIGH JUMP

JOIN IN THE FUN - SEE SCHEDULE PAGE 88 FOR ENTRY INFO

BERRY SHOW YOUNG WOMAN

WATCH AS THE BERRY SHOW YOUNG WOMAN IS ANNOUNCED

ENTRY
OPEN

HAYSTACKING COMPETITION

JOIN IN THE FUN - SEE SCHEDULE PAGE 88 FOR ENTRY INFO

MAD-STYLE-MOTO SECOND CHANCE TO SEE
THE SHOW TONIGHT!

INSANE MOTOBIKE TRICKS - **BACK FOR 2026**

GUY MCLEAN LAST CHANCE TO SEE
THE SHOW TONIGHT!

HORSEMANSHIP DISPLAY - **BACK FOR 2026**

FIREWORKS



SHOWJUMPING
FROM 7.30AM
AND **HORSE CLASSES**
FROM 8.30AM (ALL RINGS)

SEE SCHEDULE
FOR TIMES & INFO...
PAGES 30-42 - HORSES
PAGE 44 - SHOWJUMPING

BEEF CATTLE FROM
JUDGING **8.30am** ON THE CATTLE LAWN

SEE SCHEDULE FOR MORE INFO
PAGES 53-55

NEW
FOR 2026
BEAUT UTE -
PEOPLE'S CHOICE
AWARD!

FROM
9am-7pm **PAVILION**

SEE ARTS ^{AND} CRAFTS, VEGETABLES, JAMS ^{AND} PRESERVES,
FLOWERS, PAINTING, PHOTOGRAPHY ^{AND} MORE

SEE SCHEDULE FOR MORE INFO PAGES 66-86

8.30-4pm **POULTRY**
JUDGING FROM 8.30AM

^{AND} **KIDS ACTIVITIES**

SEE SCHEDULE FOR MORE INFO
PAGES 62-64



JUDGING FROM 9AM

**ANGORA
GOATS**

SEE SCHEDULE
FOR MORE INFO
PAGES 56-58



FROM **9.30am**
WOODCHOPPING

UPDATED SCHEDULE FOR 2026!

SEE SCHEDULE
FOR MORE INFO
PAGES 46-47



SCAN QR CODE TO SEE SCHEDULE FOR MORE INFO & ENTRY INFORMATION

Shoalhaven Education Fund raises \$1million for local youth

As we start 2026, the Shoalhaven Education Fund Committee is delighted to announce that it has reached a huge milestone, passing the \$1 million mark in funds raised and granted. Since its establishment in 2013, the SEF has granted a total of \$1,059,289, with every dollar raised distributed directly to help Shoalhaven school leavers pursue university degrees, TAFE courses, apprenticeships, traineeships and entry-level employment. Over that period, 486 students have been supported, with many receiving assistance across multiple years as they progress through their chosen pathways. Demand for support continues to grow year on year. For 2026 alone, SEF received 107 applications, reflecting a sharp increase in demand. From these, 59 students have been awarded grants totalling \$133,500. While the SEF is proud of this milestone, the rising number and complexity of applications highlights that need is accelerating faster than available funding.

With approximately 95 per cent of SEF recipients completing their chosen course of study, many alumni have since returned to live and work in the Shoalhaven, including nurses at Shoalhaven Hospital, teachers in local schools, social workers, veterinarians and tradespeople. These outcomes reflect the SEF's belief in the long-term value of investing in local young people and strengthening the region's future workforce.

The Berry Community has always been at the heart of the SEF, with local businesses, individuals and community groups supporting our fundraising efforts, some having done so ever since we first started. We are enormously grateful for this ongoing support and delighted that the community's efforts have gone to support many recipients from Berry and surrounds.

The SEF hopes to continue its work for many years to come. However, as a volunteer run organisation, we are desperately in need of more volunteers who are willing to take on some of the work of running the organisation. If you can spare a few hours a month and would be interested in exploring how you can help the SEF, please email our Chair, Sophie Ray, at chair@sef.org.au



Berry Computers for Seniors

If you need to update your technology skills, or are just starting on the journey, come and join our friendly, enthusiastic tutors David and Russell and our members to learn at your own pace.

9am to 10.30am - Two classes one covering

Apple devices and one covering Android

10.30am - Morning Tea it's always a popular time to get together

11am - Microsoft devices.

Cost \$30 per year.

Berry Uniting Church Hall 77 Albert Street

1st and 3rd Wednesdays @ 10am. For more information contact **David 0414 982 010.**

PASSING OF

Nancy Bevan

AUGUST 1935 – OCTOBER 2025

The Bevan Family would like to thank all those who sent kind words, cards and thoughts and or attended the "Celebration of Life" we held for Mum on 1 December, this is very much appreciated and shows just how much Mum was treasured by the people of our town.

Mum will be greatly missed.

Thank you.

Andrew & Zelpha Bevan



PLANT PROPAGATION NURSERY

Growing Plants Growing Community

Plants, pollinators, co-evolution and mutual benefits

Not all plants are pollinated by birds and bees. Some plants have co-evolved with a single specific pollinator and some tiny, (often unnoticed) pollinators are opportunists.

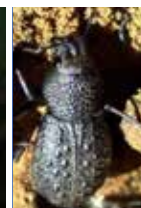
Bolwarra – *Eupomatia laurina* Bolwarra's flower over a few weeks between Christmas and New Year. The unusual primitive flowers last only one day. The flower blooms in the morning, revealing a ring of creamy white fertile stamens which are shed by the afternoon, so the pollinator needs to find and pollinate the flower within that small window of opportunity. The flowers have a distinct smell (like nail polish remover) which attracts it's only pollinator, the co-dependent tiny wasp/beetle *Elleschodes hamiltoni*. Bolwarra is related to Magnolias, both plants evolved before the evolution of bees.



Flowers opening in the morning



Beetle pollinating the flower



Co-dependent beetle

Sandpaper fig – *Ficus coronata* Fig trees are unique because the tiny flowers form inside the fruit. A tiny female fig wasp recognises a specific scent of a fig and enters through a hole near the top of the fruit. She lays her eggs then dies inside the fruit. The male offspring are wingless. After the offspring mate, the female collects ripe pollen from the flowers then leaves the fruit and flies to another fig tree and the process is repeated. Fig wasps can only mate inside the fig flower.



Sandpaper figs



Female Fig Wasp



Wasps hatching inside the fig

Little breynia – *Breynia oblongifolia* Little breynia is host to thrips and leaf flower moths which pollinate the tiny flowers. The pollinators lay their eggs in the flowers and fruits where the larvae opportunistically eat out some or all of the developing seeds.



Little breynia flowers



Little breynia fruits



Tiny thrip

BERRY PUBLIC SCHOOL NURSERY IS OPEN FOR PLANT SALES MONDAY AND THURSDAY AFTERNOONS 3.30 - 4.30

berrypantpropagation@gmail.com
www.facebook.com/BerryPlantProp/

COFFEE AND Friends

We are excited to welcome back Patrick De Gabriele as our first speaker for 2026. Patrick has visited Egypt many times over the years and has got to know and appreciate the culture of the Copts, the world's oldest Christian denomination.

The Copts claim to be direct descendants of ancient Egyptians, and are now an embattled minority in a Muslim-dominated society. His talk will be looking at a thriving desert monastery, the fine churches of middle-class Old Cairo, and so-called 'Garbage City' where the poorest live and work.

Everyone is welcome on Wednesday 25th February at 10am Uniting Church Hall, 77 Albert Street.

The Third Wednesday Book Group returns on Wednesday 18th February at 4pm. It is a friendly, relaxed group and instead of concentrating on a book a month, we have a monthly theme and each person can choose their own book to read based on the theme.

For more information ring Janet 0425 220 258

Berry Community Library

The Community Library re-opened on the 19th January and it's been great to welcome borrowers back for what we hope will be a great New Year. Our outdoor shelves were well used over the Christmas period and will be re-stocked regularly this year for people to borrow when the Library is closed. Many more books were donated over the holiday period and we have been working hard to get them onto the shelves ready to borrow.

Follow us on Facebook to keep up with our activities.

LIBRARY OPENING HOURS

Monday and Wednesday 1pm-4pm

Tuesday Thursday and Friday 10am-1pm

77 Albert Street, opposite the IGA carpark.

For more information contact Janet on 0425 220 258



Zonta Berry is the local chapter of the international human rights organisation Zonta which advocates for women's equality, education and an end to child marriage and gender-based violence.

Sunday 8th March celebrates International Women's Day (IWD) and this year's global theme is "Give to Gain: Forging Gender Equality Through Generous Giving" – focusing on the impact of giving time, knowledge, advocacy and resources to uplift women everywhere to create success. Zonta Berry will be celebrating IWD with a High Tea on Friday 6th March from 2-5pm at the Berry Courthouse. We are delighted to have our first ever female MP for the Kiama state electorate, the Hon. Katelin McInerney as guest speaker. Tickets are \$40 pp and available via the QR code below or the weblink. Come join us for a glass of bubbles, light refreshments and an inspirational talk. Zonta Berry is always looking to welcome new members to our group of women. Meeting venue has changed and meetings are now held from 630 pm, last Wednesday of the month at the Raine and Horne Boardroom, 94 Queen St Berry. We usually meet for a drink and a light meal prior. If you are interested in either joining or just trying out a meeting please contact Barbara Davis, Zonta Berry President on 0402 394 211

Fiona Mackie, Advocacy Director



\$40 <https://www.trybooking.com/events/landing/1523786?qr=true&qr=true>



71-77 Albert Street Berry

Come and join us

Sundays at 9.30am

in person or on Zoom

Zoom meeting link:

<https://tinyurl.com/xu6v4hw3>

Meeting ID: 916 5034 4362

Phone in no.: 02 8015 6011

email berryuniting@gmail.com

Phone: 0467 422 046

Web: www.berryuniting.org

Minister: Rev Gordon Bradbery

For pastoral care, weddings, baptisms and funerals, Gordon may be contacted on 0419 600 589 or at gordonbradbery@hotmail.com



KATELIN MCINERNEY MP MEMBER FOR KIAMA

I'm proud to be your strong local voice in NSW Parliament and to provide you with an update on the future of David Berry Hospital.

The latest report is now available. The next phase of consultation is about to begin.

I'm here to help:

I can assist with Services NSW, health and hospitals, roads, community grants and can arrange special birthday and anniversary messages.



102 Terralong St, Kiama NSW 2533



kiamaeparliament.nsw.gov.au



(02) 4232 1082

Scan the QR code for more information



Authorised by Katelin McInerney MP, 102 Terralong St, Kiama NSW 2533. Produced using parliamentary arrangements, January 2026.



#1 AGENCY
BERRY & BERRY REGION

Raine&Horne®

2/65 QUEEN STREET, BERRY NSW 2535 | 02 4464 1300

WELCOME TO 2026

As we step into **2026**, the Berry property market continues to be driven by quality homes, strong buyer demand and a community that remains one of the most sought-after lifestyle destinations on the South Coast. A new year brings new opportunities — whether you're considering selling, buying, investing or leasing, now is the time to start the conversation and plan ahead.

For another year running, **Raine & Horne Berry enters the year as the region's leading agency**, backed by the area's top-performing agents and a proven track record across residential sales, acreage, lifestyle property and property management. Our results aren't accidental — they're built on local knowledge, consistent buyer engagement, sharp marketing and honest advice at every stage of the process.

What sets us apart is simple: **we sell more property, achieve stronger outcomes**, and deliver a level of service that keeps clients coming back and recommending us year after year. In a market where strategy matters more than ever, experience and execution make the difference.

If 2026 is the year you're thinking about making a move — upsizing, downsizing, investing, leasing or selling — **we're here to help you navigate it with confidence**. We look forward to working with you and continuing to set the benchmark for property transactions in the Berry region.

Here's to a big year ahead.

- **Raine&Horne Berry**

OUR NEWLY LISTED PROPERTIES



90 PARKER CRESCENT, BERRY

ELEVATED LUXURY, THOUGHTFULLY DESIGNED & IMPECCABLY EXECUTED



6A GWENDA AVENUE, BERRY

PERFECT BLEND OF COUNTRY CHARM & SUBURBAN CONVENIENCE



40 PARKER CRESCENT, BERRY

DREAM, DESIGN, BUILD - YOUR BERRY OPPORTUNITY AWAITS



29 STRONGS ROAD, JASPERS BRUSH

COUNTRY-SIDE ESCAPE WITH INCOME POTENTIAL



60 CROZIERS ROAD, JASPERS BRUSH

SET AGAINST STUNNING COUNTRYSIDE & ESCARPMENT VIEWS



126 EDWARD WOLLSTONECRAFT LN, COOLANGATTA

A MULTI-GENERATIONAL HAVEN SURROUNDED BY FOREST & WILDLIFE



407B BENDEELA ROAD, KANGAROO VALLEY
RETREAT ON 5 ACRES WITH POOL & DUAL-LIVING FLEXIBILITY



1186A ILLAROO ROAD, TAPITALLEE
RURAL LIVING IN TAPITALLEE'S MOST SOUGHT-AFTER ENCLAVE



55 WALSH CRESCENT, NORTH NOWRA
A STYLISH HOME DESIGNED FOR OUTDOOR ENTERTAINING



4 LYNDBURST DRIVE, BOMADERRY
EFFORTLESS LOW-MAINTENANCE LIVING



7 LIBERTY ROAD, WORRIGEE
FAMILY LIVING MINUTES FROM WORRIGEE SHOPS & NOWRA CBD



OUR RECENTLY SOLD PROPERTIES



7 PRINCE ALFRED STREET, BERRY
SOLD FOR \$2,475,000



62C KANGAROO VALLEY ROAD, BERRY
SOLD FOR \$2,750,000



3/35 QUEEN STREET, BERRY
SOLD FOR \$825,000



7/92 JERRY BAILEY ROAD, SHOALHAVEN HEADS
SOLD FOR \$715,000



2 GLADIOLI VISTA, BOMADERRY
SOLD FOR \$1,455,000



609 ILLAROO ROAD, BANGALEE
SOLD FOR \$920,000



576 LONGREACH ROAD, LONGREACH
SOLD FOR \$1,310,000



72 KANAHOOKA ROAD, KANAHOOKA
SOLD FOR \$3,300,000



24 SPOONBILL PLACE, ALBION PARK RAIL
SOLD FOR CONTACT AGENT



1A AVONDALE ROAD, DAPTO
SOLD FOR \$785,000



YOUR PROPERTY'S
PERSONALISED MARKET REPORT
STARTS HERE

Raine&Horne®

YOUR AGENTS



Jacqui Crapp 0429 104 011
Director



Ryan Rigg 0428 838 097
Operations Manager



Tim Muckenschnabl 0407 356 631
Licensed Real Estate Agent



Jason Dorling 0438 425 574
Licensed Real Estate Agent



Corey Hamilton 0474 705 842
Licensed Real Estate Agent



Maddy Crapp 0498 513 615
Licensed Real Estate Agent



Susie Timbs 0414 767 707
Licensed Real Estate Agent



Leane Pugh 0409 319 719
Licensed Real Estate Agent



Mira Edwards 0414 247 863
Licensed Real Estate Agent



Leonie Blacka 02 4464 1300
Property Manager



Sheilla Hancock 02 4464 1300
Property Manager



Berry & District Garden Club

The Berry & District Garden Club would like to wish everyone in the Berry district all the best for the holiday season and look forward to our next year of meetings and activities.

We look forward to the 2026 year and restarting our club meetings again in February on the third Tuesday of the month at St Luke's Church Hall.

This year there will be a change in meeting time to 4.30 for 5.00pm start.

Stephen Buzacott
sbuzacott@me.com

Our motto:
Friendship through Gardening.

Secretary, Margaret Street,
welcomes enquiries at
secretary@berrygardens.org.au



SCHOON PLUMBING

Plumbing-Drainage-Gasfitting
Roofing-Guttering
Mini Excavator Hire
New Homes-Renovations
schoonplumbing@hotmail.com
Tindalls Lane Broughton NSW 2535

Call Today! **0419624011**

The Berry & District Historical Society

David Berry Hospital and a new donation at the Museum

Our David Berry Hospital and its future has been very much in the news lately with the NSW Health Department holding forums, and 'drop-ins' to get an idea of what the community, and especially the Berry Community, wants for its future use.

By coincidence, the Museum recently received a donation of a Nurses' Dictionary from a former Staff member. She is now in her 90s and lives in the ACT. She did not want to throw it away so sent it to the Hospital who passed it on to us.

The Dictionary has an interesting history. The donor, June Bunter (nee Brooks), had started as a wards maid at David Berry Hospital in 1948. Matron Margaret Dillon was in charge at that time and encouraged her to do her General Nurses Training, which she did at Bowral Hospital – 1952 to 1956.

When she left to start her training Matron insisted on giving June her own personal Nurses' Dictionary which had travelled with her all through WWII. (Matron Margaret Dillon died in 1954 and her funeral was held at the Catholic Church, Berry)

June felt that it was her way of saying 'travel safely' and she has treasured it ever since.

Now it is in our safe keeping, may it help David Berry Hospital 'travel safely' in its unknown future.



Exert from Bailliere's Nurses
Complete Medical Dictionary
by Hitch and Marshall, London.
9th Ed. 1941

Berry Museum

135 QUEEN STREET BERRY



OPEN HOURS: Saturdays, Sundays, School Holidays
and Public Holidays 11.00am-3.00pm

FREE ENTRY www.berryhistory.org.au

If you'd like to join us, please call in to the Museum and have a chat, call (4464 3097)
or email us berrymuseum@bigpond.com - We look forward to meeting you.



Growing in faith,
hope and love
Senior Minister Rev. Simon Chaplin

Worship Services

Sundays

- Traditional: 8:00 am.
- Contemporary: 9:30 am with Kids' Church. Great for families.

Bible Study Groups

- Women, men, and mixed groups.

Activities

- Knit with Love: 1:00 pm, Fridays.
- Card Making.
- Exercise Classes.

Visit us

St Luke's Church
68a Princess Street Berry
Phone 4464 1058
Email office@berryanglican.org
www.berryanglican.org



SCOOTERS WHOLESALE
WE COME TO YOU



SKILL & CARE

**GENUINE
ADVICE & SUPPORT**

SERVICE & REPAIR
WE GO THE EXTRA MILE SO YOU CAN

LOCAL & MOBILE
WE COME TO YOU, TO YOUR DOOR

Scooters Wholesale are experts in mobility scooters and powered wheelchairs. We are a local, family owned business and have been in operation since 1992. We have showrooms in South Nowra, Batemans Bay & Ulladulla, as well as a fleet of mobile service vehicles operating between Bulli and Batemans Bay. Visit our showrooms or let us bring the showroom to you!



4422 8438

28 Quinns Lane, South Nowra
www.scooterswholesale.com.au

As 2026 kicks off the Berry Evening VIEW Club welcomes new members to join and enjoy the camaraderie at the Berry Bowling Club, when we meet for our first dinner meeting of the new year on Wednesday 18th February.

VIEW, which stands for Voice, Interests and Education of Women, is a network close to 300 clubs and over 14,000 women throughout Australia. It provides a place for women to connect in the community, enjoy social activities, and develop lasting friendships – all while supporting the work of children's education charity, The Smith Family.

Berry Evening VIEW Club assists the Smith Family's endeavours by fundraising in various ways. We presently support five children in our region, but we need more members to join us. You will enjoy the company of like-minded women whilst raising money in fun activities.

To find out more about joining VIEW, visit view.org.au or call 1800 805 366. To sponsor a child through The Smith Family, visit thesmithfamily.com.au or call 1800 633 622

Ring Jan Chambers (0490 054 574) for more information to book for the evening. We welcome new members and guests.



Lynne, Chrissie and Lorna having fun at the Xmas dinner in December 2025



BERRY COURTHOUSE CONSERVATION COMMITTEE

THE BERRY COURTHOUSE NEWS

A busy (and at times, very hot) time in Berry and at the Courthouse as well. Our committee always take time over the holiday period to catch up on some of the maintenance that always goes with a very old building, especially an historic building that is listed and protected by the National Trust.

The gardens always need some work and the really hot period requires more than pruning the roses.

The gardens are looking great but we, like others, suffer from a few rabbits who have decided the hedged garden is a really nice home for them. If anyone has a good and kind solution please email us.

Our sign has now fallen down due to rot and we are currently working on the replacement. We are very fortunate to have a local benefactor / friend who has very kindly offered to assist in the cost of this.

We had some weddings leading up to the holiday period and there are some more coming soon so everything must be just right for that.

We love hosting local people and families for their wedding and have held many of these over the 25 years. It is a pity that our numbers are restricted and some of them have just too many guests to fit what we have to offer. One solution has been to hold the ceremony in the gardens and go on to the family home, the Berry School of Arts or another venue for the Reception. If you have a wedding coming up in your family please consider us. All the funds raised go toward our whole purpose of being, to protect and preserve this historic building.

We are showing quite a few couples around at the moment.

Looking forward to hosting another Community Groups Leaders Get Together shortly. These are always a great event where the leaders of many of our Berry community groups get together over a glass of something and some nibbles and exchange information with the others.

Our last one in the second half of last year benefitted from hearing a lot of successes, challenges and new ideas or initiatives such as the Rotary Club of Berry spoke about their project – the Berry Dog Park – Off Leash Area which is quickly gaining momentum.

Future community group events include one for Zonta Club of Berry who raised a lot of funds at their last event here.

Berry Courthouse Conservation Committee Inc.

- functions@berrycourthouse.org.au
- www.berrycourthouse.org.au
- <https://www.facebook.com/berrycourthouse>



SUPREME MASTER TV
Constructive Programming for a Peaceful World

SupremeMasterTV.com

Broadcasting Wonderful News and Positive,
Encouraging Programs 24 Hours a Day

Sharing Messages of Love and Peace That
Create Positive Energy for a Better, Shining World



Scots' Presbyterian Church, Berry

Minister: Rev Isaac Jung

Service Time

Worship Service 10am

Jesus And Me (JAM)

& High School Bible Study 10am

Bible Fellowship Groups

Monday 2pm • Thursday 9.30am • Friday 10am

Activities

Kids' Club

Presbyterian Womens' Assoc

Mens' Group

**Ordinary People worshipping
an Extraordinary God**

www.berrypresbyterianchurch.net.au

02 4464 1020

Cnr Alexandra Street & Victoria Street, Berry



News @ Berry Riding Club

2026 is already off to a flying start. Twilight Jumping, during January drew in our eager show jumping crowd, who enjoyed the afternoon cool breezes and colourful sunsets. Dates for our regular training events and competitions for dressage, show jumping and working equitation are being locked in and will be published on our web site and Face Book page.

It's going to be a great year, with two Eventing competitions being added to our calendar. After putting in an enormous amount of effort to build sets of super safe eventing jumps, it is exciting to see riders enjoying them. Each set has a beginner height jump for newcomers and the other jumps in the set go up in graduated steps, for the more experienced riders. With this exciting addition to our schedule, Berry Riding Club is proud to stand by its original vision, to be fun for everyone. That is, to actively introduce and encourage new and young riders to learn about and try different disciplines.

We are now ready to host an Eventing One Day Event, set for Easter Sunday. It's the first one organised by BRC since 2005. A One Day Event is quite a challenge, testing riders and horses in Dressage, Show Jumping and Cross Country Jumping.

The second Eventing date will be later in the year, in November. It's called a Hunter Trial that takes in just the Cross Country element. In the Chinese zodiac, 2026 is the year of the horse. Happy New Year!

DAVID BERRY HOSPITAL AUXILIARY



The Voice of David Berry committee members were fortunate to have a meeting with Katelin McInerney MP Member for Kiama, in December, to discuss planned usages for David Berry Hospital. Government agencies involved in the future health uses will include NSW Planning, Health, Ageing and Federal Departments of Health and Ageing.

Consultation processes are continuing with the local indigenous communities. Future focus groups with the community may also continue in 2026.

The earliest the current units will move from DBH to Shoalhaven Hospital is 2027. There will be a formal NSW Health Department update in the first quarter of 2026, to advise their timeframe for an eventual notification of what may occupy the David Berry Hospital site. No suggestions from the focus groups held in 2025 are "off the table" at the present time.

Our street stall in December, although held on a very wet day, was a great success, and a big thank you to all who braved the rain to support our hospital.

We wish all our community a very happy and healthy 2026, and a year of peace and respect to our fellow men and women.

The auxiliary meet on the second Monday of the month at 10am in the Uniting Church Hall Berry. New members are most welcome.

AUSTRALIAN RED CROSS BERRY BRANCH

The end of the year is always a busy and happy time for our Branch.

We deliver hampers to the two Berry Rural Fire and Rescue Units, our Local Ambulance Station staff and the Nowra Homeless Hub.

These hampers are in the name of the 'Members of Berry Red Cross', not Red Cross proceeds.

The end of the year, members donate items eg tinned food, cereals, biscuits, soap, treats, laundry items, shampoo and so much more.

During the year, at our monthly meetings, members put a dollar or two in a box, which is used to purchase anything missed to top up the hampers.

The Fire and Ambulance Stations received a small basket of snacks, coffee, tea, muesli bars, chocolates, soups and sweets, for their staff room, something to grab on the rush out to a job.

The Homeless Hub received 4 boxes and a large basket, all full of grocery and personal items. Amazing work they do, caring for the homeless and those otherwise in need.

As our members all live in the Berry area, we appreciate these Services and happy to support them in this way. They were all so excited and grateful to receive the gifts.

At the Berry Public School December Assembly, President Irene presented a cheque for \$1,182 to the School Ensemble. This the final cheque from the large bequests given in 2006, from the estates of two long standing members of the Berry Branch.

Winifred Irene Kellett (known as Rene) and Daphne Inez Keeveres. They were sisters, both born in Berry and lived most of their life in the town and were very well known for their volunteer work in the local community.

At the time, after consultation with the Finance Committee of Australia Red Cross and the Principal of the Berry School it was decided that part of the bequests be invested and used to sponsor the Berry School Ensemble, for the amount of \$1,000 each year, for as long as the investment continued. This was a fitting tribute to Rene and Daphne, who requested their bequests be used in the local area.

This final cheque, made a total of \$18,182 in sponsorship to the Ensemble and always very gratefully received by the School Principal and children.

The Berry Merry Christmas Street Parade is always a great event to attend, Irene, Sue, Margaret, Kate and Marilyn walked proudly with the Australian Red Cross Banner. There was a huge crowd all along the main Street and cheered as we passed. We always look forward to our yearly lunch in January and no doubt it was a great get together with lots of stories and laughs, away from business.

Looking ahead to the next 12 months in Service with Australian Red Cross, ready to assist in any way we can.

Berry Branch Australian Red Cross, still relevant, still active.

Our meetings are held in the Berry Uniting Church Hall, 2pm, first Wednesday of each month. New members are always welcome.

Irene Birks, President

icbsle@bigpond.com 0411 120 034



SOUTH COAST LIFE CHURCH

Bringing life through Jesus to the south coast and beyond

8 Schofields Lane, Berry

Sunday Services

10am & 5pm

Everyone is welcome!

hello@southcoastlife.org 4464 2315
southcoastlife.org

Ray White Berry

Welcoming you back to 2026!

In a year that was hot and cold at times, 2025 finished with some solid momentum driven by our commitment to structure and focus on delivering results.

There is no one size fits all in our market and we love the challenge to personalise a marketing campaign to fit your needs. Informed decisions can only be made with information and that is where we come in. Our activity as a team is backed by results.

In 2025, we conducted 1,117 inspections via our open for inspection and private appointment scheduling, resulting in 85 completed transactions.

Activity driven and results focused, we bring the whole team.

January 2026 has started with a positive mindset and early activity indicates we are on the right path to ensuring we can get you sold.



Shane Hilaire
0401 691 790
Selling Principal

Ray White Berry
78 Queen Street, Berry
Phone: (02) 4464 2399

As we kick off 2026, I wanted to take a moment to reflect on the incredible year that Hayley & Meg had in 2025. It wasn't just about the volume of transactions, but the connections made and the results delivered for our clients.

Our 2025 Snapshot:

- ★ 21 - Properties Sold
- ★ “3 x Large Acreages Sold (50 acres plus)
- ★ 7 x Lifestyle Properties Sold
- ★ \$5,175,000 - Our highest sale price of the year”

In Total:

270 x Open Homes hosted
208 x Private Inspections held
10 x Auctions conducted

A huge thank you to our vendors for their trust and persistence, we can't wait to make more real estate dreams come true in 2026!



Hayley Banks
Sales Consultant
0400 260 831



Megan Mawer
Sales Associate
0491 783 225

Local Insight. Genuine Care. Truly Personalised Service

RayWhite

Born and raised on the stunning South Coast, Sarah is a true local with an in-depth understanding of the region. She combines her intimate knowledge of the area with a creative marketing approach and a commitment to delivering personalised service, ensuring every client feels supported every step of the way.

With years of hands-on customer service experience and a wealth of real estate expertise, Sarah knows that finding the right property isn't just about buying or selling—it's about discovering a home that fits your lifestyle and life stage. As a proud mum, she brings empathy, insight, and a practical perspective to every client interaction.

Driven by integrity, dedication, and a genuine passion for helping people achieve their property goals, Sarah makes the buying and selling process seamless, confident, and rewarding.



Sarah Tebbutt, Sales Consultant
0401 691 793

Quality Property Management, Local Expertise

RayWhite

Our experienced property Management team has proudly welcomed over 20 new managements in 2025, reflecting our commitment to delivering reliable, personalised service to property owners across Berry and the surrounding areas.

We believe successful property management is built on strong relationships, clear communication, and attention to detail. Our hands-on approach ensures every property is well cared for, protected, and optimised to achieve strong long-term returns.

Led by Licensed Real Estate Agent Rebecca Pugh, with over 20 years of industry experience, and MacKenzie Shaw, with more than two years of hands-on property management expertise, our team offers a professional and approachable service designed to give property owners complete peace of mind.

If you are seeking a locally focused Property Management team with proven results and a genuine commitment to personalised service, we would welcome the opportunity to manage your property and help maximise its potential.



Rebecca Pugh
Senior Property Manager
0402 357 757



Mackenzie Shaw
Property Manager
0490 532 499

Ray White Berry
78 Queen Street, Berry
Phone: (02) 4464 2399

Community Groups

BERRY COMMUNITY GROUPS

Berry Alliance Inc. PO Box 202 Berry info@berryalliance.org.au www.facebook.com/berrytowncrier	0449 569 059
Berry Town Crier PO Box 202 Berry towncrier@berryalliance.org.au towncrier@berryalliance.org.au www.berryalliance.org.au	0428 037 572
Australian Labor Party Berry Shoalhaven Heads Branch PO Box 325 Berry secretarybshlp@gmail.com	4464 2446
Australian Red Cross Berry Branch Margaret 0415 887 308 margaret.walsh21@bigpond.com	0411 120 034
Berry Community Activities Centre (BCAC) valhaz@bigpond.com www.facebook.com/berrymarkets	4464 2500
Berry Community Library at Berry Uniting Church berrycommunitylibrary@gmail.com	0425 220 258
Berry Courthouse Conservation Committee PO Box 218 Berry 2535 functions@berrycourthouse.org.au www.berrycourthouse.org.au www.facebook.com/berrycourthouse	0458 369266
Berry & District Historical Society www.berryhistory.org.au berrymuseum@bigpond.com	0413 893 508
Berry Evening VIEW Club janchambers49@hotmail.com	0490 054 574
Berry Masonic Village Auxiliary icbsle@bigpond.com	0411 120 034
Berry Meals on Wheels meals2535@gmail.com www.northshoalhavenmeals.org.au	0418 422 088
Berry Men's Shed berrymensshed@telstra.com	0448 712 131
Berry Probus Club berryprobust@outlook.com	0409 651 298
Broughton Vale / Berry Rural Fire Brigade Leadership-BroughtonVale-Berry-vol@rfs.nsw.gov.au	4424 4424
Country Women's Association Berry Branch 79 Victoria St., Berry berrycwasecretary@gmail.com	0413 187 148
David Berry Hospital Auxiliary icbsle@bigpond.com Irene Birks 0411 120 034 margaret.walsh21@bigpond.com Margaret Walsh 0415 887 308	
Huntingdale Park Resident Action Group PO Box 325 Berry 2535 rick.bmfberry@bigpond.com	4464 2446
Masonic Lodge Broughton 131 Agricultural Hall, Berry Showgrounds kevinwant@gmail.com	0401 395 401
Rotary Club of Berry berryyrotary@gmail.com www.berryyrotary.org.au	0409 318 171
St. Vincent de Paul Society Vinnies Shop 1117B Queen St. Berry	HELPLINE 4421 0390 4464 3940

BERRY COMMUNITY GROUPS CONTINUED

Voice of David Berry Hospital margaret.walsh21@bigpond.com www.voiceofdavidberryhospital.org	0415 887 308
Zonta Club of Berry Inc. berry@zontadistrict24.org zontaberry.com.au Facebook – Zonta Berry	0402 394 211
Arts	
Arts National Shoalhaven www.adfas.org.au/shoalhaven artsnationalshoalhaven@gmail.com	4464 2619
Berry Silver Band Kaye – kayecj@westnet.com.au adrian@fewwordsphotography.com.au or 0427 775 100	0490 037 619
Berry Spinners & Weavers info@bswi.au	0407 734 410
Knit With Love St. Lukes Church Hall – 68A Princess St. Berry Lyn Oades – terryandlyn@gmail.com	0404 562 772
OpenField Arts Festival PO Box 5, Berry 2535 www.openfield.org.au info@openfield.org.au	0439 750 029
Red Berry Quilters redberrysec@gmail.com kerrie.piper@gmail.com	0420 301 511
Churches	
Berry Uniting Church berryuniting@gmail.com 71 Albert St., Berry	0466 717 254
Meroo Union Church (Friends of) rim@virtualvity.com.au Facebook: Meroo Union Church	4448 6048
Scots' Presbyterian Church, Berry Rev. Isaac Jung colin@daydesign.com.au www.berrypresbyterianchurch.net.au	4464 1903
South Coast Life Church josh@southcoastlife Erica Noonan, Lead Pastor www.southcoastlife.org F: South Coast Life Church	0402 699 732
St. Luke's Anglican Church 87 Victoria Street Berry www.berryanglican.org office@berryanglican.org	4464 1058
St. Patrick's Catholic Church nowra@dow.org.au North Street Berry www.nowraparish.org.au	4423 1712

EDUCATION AND PLAYGROUPS

Berry Computers for Seniors Uniting Church Hall, 77 Albert St, Berry berrycfs@gmail.com	0414 982 010
Berry Community Pre-school berrypreschool@bigpond.com www.berrypreschool.org.au	4464 1764
Berry Kids Club Berry Presbyterian Church sueskinner83@gmail.com	0419 634 365
South Coast Life Church Let's Play (Playgroup) Dale Wells 0409 262 971 Alison Page 0421 186 127 www.southcoastlife.org/lets-play	

EDUCATION AND PLAYGROUPS CONTINUED

South Coast Kid's Club Sharayah Lardner 04073 791 886 sharayah@southcoastlife.org www.southcoastlife.org/kids-club	
Berry Youth Group kateweakley74@gmail.com www.southcoastlife.org/berry-youth.html	Kate Weakley 0403 915 728
Gardening & Landcare	
Berry Landcare www.landcare.nsw.gov.au/groups/berry-landcare/ www.facebook.com/Southerners2535/	0427 255 417
Berry & District Garden Club secretary@berrygardens.org.au www.berrygardens.org.au	0411 477 997
Berry Public School Plant Propagation Berryplantpropagation@gmail.com https://www.facebook.com/BerryPlantProp Natural Studies and Plant Propagation Centre BPS	4464 3911
Recreation	
Berry Bridge Club Inc. ceciliemlewis@gmail.com www.bridgewebs.com/berry	0417 207 130
Sport	
Berry Men's Bowling Club draym@bigpond.com	4464 2995
Berry Riding Club info@berryriddingclub.com www.berryriddingclub.com	0410 506 143
Berry Tennis Club PO Box 133 Berry NSW 2535 berrytennis@hotmail.com	
Berry Women's Bowling Club	4464 3053
Sponsored	
A Taste of Paradise admin@atasteofparadise.org.au www.atasteofparadise.org.au	0490 060 251
Berry Community Library 77 Albert St (Berry Uniting Church Hall) berrycommunitylibrary@gmail.com	0425 220 258
Berry Public School Plant Propagation Berryplantpropagation@gmail.com	4464 3911
Berry Writers Festival info@berryywritersfestival.org.au www.berryywritersfestival.com.au	
Bundanon Trust www.bundanon.com.au	4422 2100
Pink Up Berry Raises Money for the McGrath Foundation pinkupberry@gmail.com	0428 005 910
SALT Ministries Supporting those in need 5-19 Birley St. Bomaderry info@salt.org.au or Facebook	4480 5028
Shoalhaven Education Fund chair@sef.org.au www.cef.org.au/shoalhaven	0414 379 059

Any Berry Community group who are yet to provide their updated details (after your AGM elections for example) please email them to info@berryalliance.org.au. If you need a form please email us for that. Please ensure that we always receive any updates or changes.

Berry Alliance and Town Crier Management Committee

EMERGENCY 000

Police Assistance Line (Non-Urgent Police Reports) 131 444
Berry Police 4464 2175
Fire & Rescue NSW 02 4478 4924

Rural Fire Brigade (Broughton Vale) 4464 1522
SES For Emergency Help in Floods & Storms 132 500
Ambulance - always call 000

We would like to recognise and recommend our Printers - Berry Printers.

Berry Printers have been our partners in producing the Berry Town Crier for nearly twenty years now and since we also engaged them to do our graphic design we have enjoyed excellent, seamless and on time production.

They are a local business (which is an important consideration for us) and a family owned and run business.

We certainly recommend them if you need and printing done, from shop signs to business cards and everything in between.

Thank you for your partnership with us. Berry Printers 4422 3774.

Berry Alliance and Town Crier Management Committee



DEVELOPMENT APPLICATIONS AND DETERMINATIONS

Here is a list of the most recent Shoalhaven City Council Development Applications and Determinations since the list was produced in the last Berry Town Crier. The information on how you can see details and follow these applications, to make submissions and to follow an application is provided in the Town Crier each month. It is also provided in the "Friends of the Berry Town Crier" Newsletters sent out regularly between editions of the Town Crier.

If a community member has an interest in any DA then all details are provided on the Council Web Site: <http://www.shoalhaven.nsw.gov.au/masterviewUI/modules/ApplicationMaster/Default.aspx> Development Application Tracking.

Also, you may note that there are an increased range of DA, PCD, MA titles to their number.

"DA" is Development Application and is still currently the standard application.

"PCD" is Private Complying Development an application being submitted and approved by a private Assessor. These are usually signed off and approved in a couple of days.

"MA" means Modified Application – sometimes previously described as a variation. But it is an application for a modification to an existing approval.

DAS, MODIFICATIONS, REVIEWS & PRIVATE CERTIFIERS COMPLYING DEVELOPMENTS – APPLICATIONS RECEIVED

DA2025/2413	– 06/11/2025	– Alterations and additions to dwelling house – deck, awning & retaining walls to existing pool area – 15 Ben Dooley Road, Berry
DA2025/2413	– 6/11/2025	– Alterations and additions to dwelling house – deck, awning & retaining walls to existing pool area – 15 Ben Dooley Rd., Berry Mountain
MA2025/1376	– 12/11/2025	– S455(1A) to DA18/1386 – Internal replanning & window amendments, rear deck & awning resized; pool relocated & terrace added; revised external finishes; minor landscaping changes; tree removal – 130 Kangaroo Valley Rd., Berry
PCD2025/1744	– 13/11/2025	– Torrens Title Subdivision – 57 Victoria Street Berry
PCD2025/1754	– 17/11/2025	– Swimming Pool – 39 George St., Berry
MA2025/1383	– 19/11/2025	– S4.55(1A) to SF 10896 – amended condition 1, 24a and 32a – 35 Bryan Close Broughton Vale
MA2025/1387	– 19/11/2025	– S4.55(1A) to DA23/1497 – Changes to conditions – 299 Wattamolla Road, Woodhill
MA2025/1388	– 26/11/2025	– S4.55(2) to DA22/2113 – Internal & external amendments – 16 Pulman Street Berry
DA2025/2527	– 04/11/2025	– Two Lot Torrens Title subdivision with demolition; driveway and stormwater drainage works – 100 North St., Berry
PCD2025/1798	– 4/12/2025	– 1 into 3 Lot Strata Subdivision – 23 Parker Crescent Berry
MA2025/1392	– 01/12/2025	– S4(55(2) to DA23/3235 – Reduction of windows and doors and updated driveway design – 391 Kangaroo Valley Rd. Berry Mountain
DA2025/2552	– 05/12/2025	– Proposed workshop and shed – 273 Bundewallah Rd. Bundewallah
DA2025/2560	– 08/12/2025	– Demolition of existing. Proposed new dwelling, detached habitable room and swimming pool – 16 Coomonderry Ridge Berry
PCD2025/1803	– 09/12/2025	– Swimming pool – 74 Parker Crescent Berry
MA2025/1409	– 10/12/2025	– SA.55(1a) to DA17/2471 – Internal and external changes – 271 Tullock Road (Priv) Broughton Vale
PCD2025/1817	– 11/12/2025	– Demolition & Single Storey Dwelling. Swimming pool and spa – 359c Coolangatta Road, Far Meadow

DAS, MODIFICATIONS, REVIEWS & PRIVATE CERTIFIERS COMPLYING DEVELOPMENTS – APPLICATIONS DETERMINED

DA2025/2211	– Approved	– 13/11/2025	– Alterations and additions to a dwelling house – 844D Kangaroo Valley Rd. Bellawongarah
MA2025/1337	– Approved	– 11/11/2025	– S4.55(1A) to DA25/1459 – Amendment to the rainwater tank to be underground – 38 Serenity Ridge Berry
DA2025/1984	– Approved	– 20/11/2025	– Change of use to Commercial Premises (small bar), alterations and additions to existing building and signage – 102 Queen St. Berry
DA2024/2065	– Approved	– 01/12/2025	– Monthly Markets – fourth Sunday of each month – 140 Queen St., Berry
DA2025/2374	– Approved	– 4/12/2025	– Swimming pool – 185 Bundewallah Rd Bundewallah
DA2025/2324	– Approved	– 01/12/2025	– Demolition of dwelling and construction of a single storey dwelling house – 84 Cedarvale Lane (Priv) Jaspers Brush
MA2025/1388	– Approved	– 08/12/2025	– S4.55(2) to DA22/2113 – Internal and external amendments – 19 Pulman St Berry

Brought to you by the Management Committee of the Berry Alliance Town Crier

More updates (between issues of the Town Crier) can be found in the Friends of the Berry Town Crier Newsletters which are emailed out.

Subscribe to be a Friend of the Berry Town Crier by emailing info@berryalliance.org.au with your name, email address and telephone number with your request "Subscribe to Friends Newsletter" Friends also receive an "E" version of each Town Crier prior to delivery) plus can includes reminders of Deadlines and extended article on a number of issues.



**RED HOT SUMMER
TOUR 2026**

PAUL KELLY

MISSY HIGGINS

THE CRUEL SEA

THE CAT EMPIRE

KASEY CHAMBERS

JESS HITCHCOCK

**RED HOT SUMMER CONCERT
BERRY SHOWGROUNDS
SATURDAY 14TH FEBRUARY 2026**
WWW.REDHOTSUMMERTOUR.COM.AU

THE Red Hot Summer Concert at Berry featuring Paul Kelly and special guests will take place on Saturday 14th February at the Berry Showground. Amplified music will be from 1.30 pm to 9.30 pm and sound checks may occur prior to these times. A road closure will be in place on Alexandra Street adjacent to the showgrounds from 6.00 am to 11 pm and drop off/picks ups will occur on Station Road on Saturday 14th February 2026. All Alexandra Street residents will have unlimited access to their residences on presentation of their driver's licence. Full security will be on site during the event.

• SATURDAY 14 FEBRUARY •
BERRY SHOWGROUND, BERRY NSW

For further information please contact
 Deb Alexander at Face to Face Touring on
 0414857738 or deb@facetofacetouring.com.au

TICKETS AT TICKETMASTER.COM.AU

FACE ticketmaster®

TRADES & SERVICES DIRECTORY

RURAL BITUMEN

**BITUMEN SEALING OF RURAL ROADS
AND LARGE DRIVEWAYS**

Equipment certified to RMS106 | ISO9001 accredited

0416 269 744

FOCUSED Cleans

focusedcleans.com.au

We focus on...

- Homes
- Offices
- End of lease cleans
- Holiday home cleans
- Insurance cleans
- Spring cleans
- Windows
- Ovens

P 02 4423 4521 M 0431 774 774



G.M. Ellison & Co. lawyers • conveyancers

Graham Ellison LL.B.

- Real Estate & Business Conveyancing
- Wills, Probate and Personal Arrangements

5 HOST PLACE BERRY

Ph: 0408 444 808

graham@gmellisonlawyers.com.au



**PCA
ANTHONY LEWIS
BDC 0228**

**PCA
JARED NEVILL
BDC 2523**

02 4421 0004 info@aiscertifiers.com.au



**gerringong & kiamo
physiotherapy**

southern coast pelvic health
physiotherapy and pilates

Physiotherapy | Pelvic health | Pilates | Massage

4234 4666

Book online: gerringongphysio.com



wholebody
PHYSIOTHERAPY

...dedicated to your wellbeing

Nikki Hilton

Mary Pentecost

84 Queen Street Berry NSW 2535
email: wbpqueen84@hotmail.com

4464 2874



SOLAR AND BATTERY

Design Quote and Install

All of your electrical needs!!

**GREG KELLY
0487 093 173**

Licence Number 270316C



0410331284

www.homesteadbuildingprojects.com.au

- New Builds
- Extensions
- Pergolas
- Renovations
- Decks
- Maintenance

Builders License: 451585C



GUTTERKNIGHT

keith.m@gutterknight.com.au

0481 745 958

Vaughn's Lawn & Garden Service



- ✓ Local knowledge
- ✓ Professional service
- ✓ Fully insured

0408 863 776

www.vaughnsgardening.com.au

PLUMBER DRAINER GASFITTER MINI EXCAVATION

Marland Plumbing Services



Licence No. 72832C
ABN 43 571 877 557

Over 25 Years Experience in the Shoalhaven

Phone: 4480 2251 Mobile: 0412 044 135
marlandplumbing@inet.net.au

DC DANIEL CORR BUILDING SERVICES

Quality craftsmanship, from the ground up

New Builds
Renovations
Extensions

Local. Reliable. Built to last.

Call Daniel 0411 137 263

danielcorrbuiding.com.au
Licence no: 126602C



Step into our vibrant salon where the magic of transformation awaits at **108 Queen Street Berry!**

- Hair Cuts - Ladies & Mens
- Colours - Tints, Foils, Balayage
- Wash, Blow Dry and Styling
- Treatments - Keratin, K18, Hair Masks
- Makeup Services
- Retail Hair Care & Styling Products
- Champagne & Cocktails
- Wedding Hair & Makeup Specialists

**HAIR +
MAKEUP +
COCKTAILS**

www.blowbaronqueen.com **02 4464 2618**
E: hello@blowbaronqueen.com [@blowbaronqueen](https://www.instagram.com/blowbaronqueen)



Wilson Hirst BUILDING

YOUR LOCAL BUILDER

NEW HOMES • EXTENSIONS • RENOVATIONS

02 4421 8677 M: 0449 668 439
[E: wilsonhirst@hotmail.com](mailto:wilsonhirst@hotmail.com)



0422 260 235

Specialising in glass & aluminium designs:

Pool fencing Shower screens
Balustrades Gates Privacy screens

[unique.innovations.sthcoast](https://www.instagram.com/unique.innovations.sthcoast)



TRADES & SERVICES DIRECTORY



**BERRY
REMOVALS**

Moving made easy from Berry NSW -
Australia wide with Care & Heart

0428 643 557

Experience a new level of professionalism.

David Cox.

BUILDING DESIGNER
B.Arch UTS

T 02 4465 1224 M 0412 671 735
E davidcox@fastrac.net.au
PO BOX 6037 Kangaroo Valley NSW 2577
www.davidcoxdesign.com.au

**GRADE EX
ROAD GRADING +
GRAVEL SUPPLIER**

■ Rural, private and farm roads
■ Local Contractor
■ Fully Insured

**CONTACT
JOHN**
0408 160 428
john.52.smith@icloud.com

OneStopHomes

YOUR LOCAL BUILDER
NEW HOMES | EXTENSIONS | RENOVATIONS

☎ **02 4421 8677 M: 0449 668 439**

www.onestophomes.com.au

Life is better in a One Stop Home

**John Hawkins
Concretor**

We aim for a professional finish and work with the customer to obtain the job they desire.

Specialising in:

- Stamped
- Stencil
- Colour Cove
- Black Basalt
- Machine Finish
- Stained

P: 0401 236 850

FULLY LICENSED & INSURED • QUALITY FIRST • LIC NO: 169901c

**Call Curran,
Call Local!**

☎ **1300 792 082**

Established in Berry since 1996

Curran is your local expert for plumbing, electrical services, hot water systems, and air conditioning!

Curran

PLUMBING • ELECTRICAL
HEATING & AIR®

www.callcurran.com.au

Pines Concrete & Landscape
Ben McCarthy Warri Beach NSW 2539

Mob: 0438 703 109

For all your concreting & Landscaping projects
Call or text Ben on 0438 703 109

Our Legged Friends Pet Feeding Service

FOR ALL DOMESTIC PETS AND FARM ANIMALS

- FEEDING • EXERCISING • RUGGING
- GARDEN / MAIL / GARBAGE

Megan 0407 407 328
Dip in Animal Care
ESTABLISHED 1995

Original, local and experienced.

**SAM
GALLAGHER
CARPENTRY**

All Jobs Carpentry
Decks, Pergolas, Maintenance,
Renovations, Additions,
Kitchen & Bathroom Reno's

Free Quotes 0434392017 LIC NO: 317866C

Berry Vet Clinic

ESTABLISHED 1935

Cultivating meaningful connection with you so that, together, we can provide the best care for your animals.

84 Queen St, Berry Emergency Services Offered (02) 4464 1079

SHOAL PLUMBING
— 0411 476 780 —

All your plumbing,
drainage, gas, roofing
and emergency plumbing.

CHRISTOPHER BRAMLEY
LIC NO. 235127C

**CountryLiving
ELECTRICAL**

0491 033 247

Licence No: 253095C ABN: 70 845 107 241
Email: admin@countrylivingelectrical.com.au

neca MEMBER
National Electrical and Communications Association

Kangaroo Valley / Berry + Surrounds

Residential Commercial 25+ Years Experience Fully Insured

**JET
LOCKSMITHS
& SECURITY**

Automotive Residential
Commercial Industrial

MOBILE 24/7 LOCKSMITH SERVICE
0498 770 088
www.jetlocksmiths.com.au

Master Locksmith | Security Lic #000101098

MECHANICS TO YOU!

**MECHANICAL
MOBILE FARM
Service**

MOBILE SERVICE & REPAIRS
LAWNMOWERS | TRACTORS | TRUCKS | FARM EQUIPMENT

CALL 0414 800 359

MOTATEC
EXPERIENCE — EXCELLENCE

AUTOMOTIVE SERVICE CENTRE

SERVICING | REPAIRS | PINK & BLUE SLIPS
FOR ALL MAKES & MODELS

EUROPEAN SPECIALISTS
COURTESY CAR AVAILABLE

96 NORTH ST, NOWRA
CALL 4424 0803

Our clients say it best



”

Amazing agent with knowledge and expertise second to none

Nicholas went above and beyond to sell the property under difficult circumstances, achieving an amazing result. His personal attention to detail and professionalism was outstanding. I would highly recommend Nicholas to anyone in the market, buying or selling.

Seller – Berry

”

Nick is a friendly and market savvy agent

Nick has a jovial and friendly disposition, who makes people feel at ease with the selling and purchasing process. He was spot on with our home's valuation and he pursued interested parties with gentle persistence. Nick held an open house when he perceived there were sufficient people to view the property and brought people at other times if that suited them better. We highly recommend Nick to any purchaser or seller.

Paul – Meroo Meadow

”

Nicholas performed his job expertly selling our property in 3 hours !

Nicholas's performance was no less than brilliant. He knows the market & potential purchasers. His follow up & after sale service was terrific. I would recommend him to anyone wanting to sell in the Berry area.

Kelleah – Far Meadow

”

Highly recommended agent

We have dealt with Nicholas twice now. Initially for the purchase of a block of land and most recently for the sale of our house in Berry. Both times he has provided a friendly, professional service that exceeded our expectations. He made buying/selling property very seamless and we would not deal with any other agent in Berry. We have no hesitation in highly recommending him.

Daryl – Berry

Looking to sell? Get in touch with Nicholas Lyell today – 0401 658 450