

SUPPORTING COMMUNITY GROUPS AND KEEPING BERRY INFORMED



BERRY TOWN CRIER

PO BOX 202 BERRY NSW 2535

WWW.BERRYALLIANCE.ORG.AU

 WWW.FACEBOOK.COM/BERRYTOWNCRIER

OCTOBER 2025 PRICE: \$5.00

Reach your community where it counts – place an ad in your local paper.

BERRY MEN'S SHED SALE
PAGE 4

PINK UP BERRY'S
JAM-PACKED SCHEDULE
FOR THIS MONTH
PAGE 3

JOIN REDBERRY QUILTERS'
MONTHLY GUEST SPEAKER
EVENT ON OCTOBER 24TH
PAGE 19

GOOD NEWS FOR
DAVID BERRY HOSPITAL
PAGE 9

REINVENT YOUR
RETIREMENT
WITH PROBUS
PAGE 9

A TASTE OF
PARADISE
WOULD LOVE YOU
TO VOLUNTEER
ON THURSDAYS
PAGE 7

 Berry & District
Garden Club

Berry Gardens Festival

THURS 16 - SUN 19 OCTOBER 2025
10AM - 4PM

**\$25 for all 7 gardens or
\$8 for a single garden**

Tickets available at all gardens and
Broughton Court, 113 Queen St, Berry
or online at: www.berrygardens.org.au

BERRY ALLIANCE INFORMATION



The Town Crier is produced by the Berry Alliance Inc.

The purpose of the publication is to communicate to the people of Berry about community activities and aims to share information amongst community groups, individuals and the community. A community that is well informed with a range of different opinions makes better decisions and that makes for an even better community that we can continue to be proud of.

Contributions are from the Berry Community who have news and information for our readers.

The opinions expressed in the Town Crier are not necessarily those of the Berry Alliance or of the Editors.

MEMBERSHIP:

Membership of the Berry Alliance costs \$15 per annum and is open to Berry community groups registered with the Berry Alliance as well as individuals.

To join please write to Berry Alliance, PO Box 202 Berry NSW 2535 or email: info@berryalliance.org.au

TOWN CRIER EDITORIAL BOARD:

Martin Aicken
Nancy Davies
Rick Gainford
Holly Landgren
Dr Fiona Mackie
Guy Mainsbridge

Editor's Note



The closing date for our November issue will be Wednesday 22nd October 2025 at 5pm. Please submit prior to this date if it is your first submission. Material can be submitted via e-mail to:

towncrier@berryalliance.org.au
Phone 0428 037 572

Town Criers can be downloaded for free from www.berryalliance.org.au or our Facebook Page: Berry Town Crier.

Nancy Davies - Berry Town Crier

THE TOWN CRIER IS PUBLISHED MONTHLY, WITH A CIRCULATION OF 2,400 COPIES AS WELL AS ELECTRONICALLY BY EMAIL OR ON OUR WEB SITE



PRINTED BY **Berry Printers**
CONCORDE WAY BOMADERRY PH: 4422 3774
PRINTED ON RECYCLED PAPER



Zonta Berry is delighted to have been awarded a Club Grant by Bomaderry Bowling Club for \$15650. The grant will help fund our We Can Start Again programme which provides baskets of domestic goods and basic appliances to women affected by domestic violence and/or homelessness leaving acute crisis accommodation at SSAHSI Nowra to set up new lives. Funds also assist their children with school and sporting uniforms and membership fees for sporting activities. We are enormously grateful to Bomaderry Bowling Club in facilitating our work and the wonderful work of the SSAHSI staff.

Don't forget the famous Zonta recycled fashion sale is on again - Berry Showground on Sunday 5th October. Why don't you buy a ticket for our special cocktail preview event at 4 pm Saturday 4th October- cocktails- canapes- first opportunity to purchase clothes. Tickets at the QR code below.



Dr Fiona Mackie
Advocacy Director



SOUTH COAST LIFE CHURCH

Bringing **life** through **Jesus** to the south coast and beyond

8 Schofields Lane, Berry

Sunday Services

10am & 5pm

Everyone is welcome!

hello@southcoastlife.org 4464 2315
southcoastlife.org

Keeping The Information Neat and Tidy

We recently received a request from the Berry Museum to replace their display cabinet.

The request from the Museum committee was to have a cabinet designed to display all their important brochures and sale books so customers can easily select information about Berry and the surrounding areas.

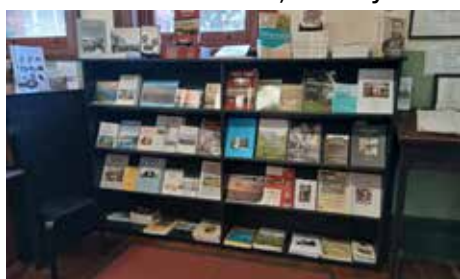
The bookcase, constructed by Shed member Paul, provides the Museum with a variety of options to display their books for sale and has already helped the Museum increase book sales.

Later this month the Shed will be celebrating our 20th anniversary, and we are delighted that our three life members, Tom Darby, John Hudson and Peter Johnstone will all be in attendance at this important event. Beth Gow, the State Men's Shed co-indicator, will also be attending.

If you have any chairs, tables or the like that need repairing please bring them into the Shed.

Finally, a reminder that the Shed will be holding their annual sale in Broughton Mall on Saturday 4th October and we look forward to seeing many locals looking for something for Christmas.

Richard Wiseman, Publicity Officer



PINK UP BERRY TOGETHER WE CAN MAKE A DIFFERENCE!

October is just about here, and we have got a packed month of fun and fundraising planned. All funds raised goes direct to the McGrath Foundation who provide specialised Cancer Care nurses to support those experiencing any type of cancer.

Saturday 4th October 12 noon Toppy Bowden Memorial Barefoot Bowls Day - \$200 prize money and trophy donated by Berry Smash Repairs: \$10 per player, includes sausage sanga. Dress code: Crazy Pink, non-bowlers and children welcome. Entertainment by Van Carter. Raffles, 100 clubs and a fun time. Phone Nathan Bezant 0431 067 332 to book in.

Saturday 11th October-Fun Trivia Night at Berry Bowling Club - \$20 per player, max 8 to a table, raffles, auctions and a whole lot of fun. Text Pauline 0412 132 690.

Wednesday 15th October - Homestead Luncheon -sold out- many thanks to the Homestead and Garnish catering for providing everything for this event complimentary-amazing generosity.

Sunday 19th October - Shoalhaven City Turf Club Mollymook Cup/Pink Up Berry Race day - tickets available & all information are on their web page or phone 4421 4550. Great Prizes for Fashions on the field, entertainment and free train rides for the kids. A free bus will be leaving from Berry. To book a seat text Karen 0407 236 700.

Saturday 25th - Street Stall at Broughton Court- all cooking donation enquiries to Pauline by text 0412 132 690.

Friday 31st October - Tradies Arvo at Berry Bowling Club.

Tuesday 4th November - Melbourne Cup Luncheon at Berry Bowling Club - \$35 per person- sponsored by The Berry Barn -prizes for fashions on the field Bookings phone Deb 0428005910

It's not too late to register your home by paying \$10 -You will receive a string of pink buntings to display on your home and you go into a draw of 15 prizes to be won. Bunting can be purchased from The Berry Barn or from our volunteers that have been visiting homes.

Home Thyme has once again sponsored the best decorated Home and 2 runner-up prizes for those that want to add a bit more pink to their home. This will be judged Mid-October.

Raffle tickets for our major raffle which is 1st ticket drawn has the choice of a Bathurst experience 12 hour double pass in February, pit tours, hot lap, camp site and more valued at \$3000 and donated by Shane Rudzis or a 2-night midweek accommodation at Maple on Edward valued at \$2800 donated by Linnaeus Collection tickets can be purchased every Friday and Saturday mornings outside McGoldricks Real Estate.

MTA Travel are running an amazing online Raffle with the prize being an all-inclusive holiday to Club Med Maldives enquires to Jodie 0412 218 563.

The Open Garden event on Sept 14th was incredible - many thanks to Ros Brooks for inviting us to have this event on her magical property. A total of \$5338 was raised. Thank you to all the Volunteers and Committee for bringing it all together and to all who attended.

Many Businesses are holding in house events during the month so please try & support them & thank you to everyone involved in making a difference to those experiencing cancer.

All enquiries to pinkupberry@gmail.com or phone Deb 0428 005 910.



and

Berry Mens Shed



*** In Berry Uniting grounds.**

*** Use North St entrance**

To book a car space or table @ \$20

Click on the QR code or

email : berrycommunitylibrary@gmail.com





BERRY MEN'S SHED

Annual Sale

in Broughton Mall Queen Street, Berry

8am Saturday 4th October

**Lots of items for sale covering a
wide variety of goods - ideal for
Christmas and all other occasions**

EVERYTHING MUST GO!

Have your say on Council's strategy for a thriving Shoalhaven economy



15 September 2025

Shoalhaven residents and businesses are invited to provide feedback to help inform Council's new Economic Development and Tourism Strategy 2035.

It is intended that this 10-year strategic document will provide a roadmap for how Council will support, attract and advocate for businesses in the region and capitalise on the opportunities of the visitor economy.

"This is an important opportunity for residents and businesses to discuss areas they believe Council can support sustainable growth of jobs and business in our region," said Mayor Patricia White.

"Council plays many roles in supporting the local and visitor economy. It is important that residents have their say to ensure we develop a strategy that reflects and supports our community's aspirations for our local economy into the future," Cr White said.

Once finalised, the new strategy will be a combined replacement for the existing, Economic Development Strategy 2017 – 2026 and Destination Management Plan 2018 – 2023, both of which are due for renewal.

The community can provide initial and early feedback by completing an online

survey on Council's Get Involved website by Friday 24 October 2025.

Industry leaders and business representatives will also be invited to participate in a separate, business survey and attend targeted workshops to discuss Shoalhaven's economic development and tourism priorities.

Business owners and managers who wish to attend a workshop are requested to register by Friday 3rd October by emailing business@shoalhaven.nsw.gov.au.

The new strategy will support other key Council plans including the Community Strategic Plan 2032 and will provide direction for Council's annual Delivery Program Operational Plan (DPOP), Budget, and the setting of any fees and charges.

For more information and project updates, visit the Economic Development and Tourism Strategy Get Involved page.

BROUGHT TO YOU BY THE
BERRY ALLIANCE TOWN CRIER



FIONA PHILLIPS
FEDERAL MEMBER FOR GILMORE
ON YOUR SIDE



Scan the
QR code to
keep in touch

I'm proud to be your local voice in parliament and to continue delivering cost-of-living relief, tax cuts and vital road and infrastructure projects.

I'm here to help you with issues like Medicare, Centrelink, aged care and pensions, the NDIS, Veterans' Affairs and community grants. I can send you our Seniors and Pensioners Kit, and arrange special birthday and anniversary messages.

I'm on your side.

☎ **4423 1782** ✉ **Fiona.Phillips.MP@aph.gov.au**

★ **3/59 Junction St, Nowra NSW 2541**
1/6-8 Orient St, Batemans Bay NSW 2536

🌐 **FionaPhillips.com.au**

AUTHORISED BY FIONA PHILLIPS MP, ALP, 3/59 JUNCTION ST, NOWRA NSW 2541



The Berry Forum

www.berryforum.org.au

Attempt to rezone land adjoining Huntingdale and the Arbour

Council was approached recently by four rural landowners on Berry's south-western edge seeking approval for major residential rezoning and development. All the subject land is outside the growth areas identified in the Shoalhaven Growth Management Strategy, which was adopted by Council in 2012 and endorsed by the NSW Government in 2014.

The subject properties are distinctly rural in nature and are currently not identified for future growth in any of Council's land use strategies. Residential development of these sites is also inconsistent with Council's current policy to retain and manage rural land, a policy position that is set by the Shoalhaven Local Strategic Planning Statement (LSPS) and reinforced by the Illawarra-Shoalhaven Regional Plan 2041.

Council staff put the following Recommendation to the Council meeting on 28 August –

Council to reaffirm the current policy position set by the Shoalhaven LSPS to *"retain and manage existing rural land, avoiding the rezoning of such land for other uses including rural-residential and residential outcomes, unless identified in a relevant strategy."*

The Recommendation was endorsed in a deputation by Forum Secretary Stuart Coughlan, and councillors voted to support it. However, after the meeting three councillors from Wards 2&3, Casmiri, Proudfoot and Kemp signed a rescission motion to force a revote at the next meeting on 9 September.

Our Ward 1 Councillors Peter Wilkins, Jason Cox, Matthew Norris and Selena Clancy, who had told us they had previously been inundated with emails from Berry residents imploring them to support the staff Recommendation, asked the Forum Committee to organise a poll to assess residents' opinions on the rescission motion.

The Committee organized the poll, which resulted in 307 voted to reject the rescission motion and only 5 to support it. Armed with this overwhelming support from the community, our Councillors joined with Mayor Patricia White and four other councillors to ensure the rescission motion was withdrawn.

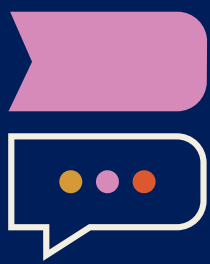
Berry Hotel

On 11 September we received an email from the Feros Group referencing the meeting held on 6 August with representatives from Berry community groups. The email contained the following comments –

"Your input was constructive and highlighted areas of consideration for refinement, particularly around parking, traffic flow, stormwater management, and activation of community spaces. This feedback is invaluable in helping us shape a proposal that reflects the needs and character of Berry while ensuring the long-term success of Berry as a town."

Next Forum Meeting

The next meeting and AGM will be held on Thursday 16 October. If you wish to nominate for the Committee, please email berryforum@hotmail.com before Friday 3 October.



BERRY
WRITERS'
FESTIVAL

PRESENTS:

Craig Silvey

IN CONVERSATION WITH

Tori Haschka



Craig is the author of *Runt* and its eagerly awaited sequel *Runt and the Diabolical Dognapping* as well as the award winning *Jasper Jones* and *Honeybee*.

MON, 27 OCT 2025 | 6.30PM | BERRY SCHOOL OF ARTS

TICKETS ON SALE SOON

SIGN UP FOR UPDATES AT

BERRYWRITERSFESTIVAL.COM.AU

PUT THE 2026 FESTIVAL DATES IN YOUR CALENDAR...

22-25 OCTOBER 2026

BROUGHTON VALE/BERRY BRIGADE

YOUR LOCAL RFS

SERVING THE LOCAL COMMUNITY OF BERRY



This month we'd like to introduce you to the current President of our Brigade and one of our deputy captains - Ken. He joined the RFS a few years ago and Broughton Vale/Berry is his first Brigade. Ken says joining the RFS was a childhood interest, and the time was finally right in 2022. He has a passion to make a positive impact on people, and a desire to meet a community need. Ken enjoys learning new skills and honing the ones he already has. He says people think the RFS just fights fires but as a front-line emergency service, we respond to many and varied emergency situations.

Ken has undertaken a variety of courses since joining, including Basic Bush and Structural Firefighting and dealing with Critical Incidents.

When asked for one piece of advice he could give to Berry locals about bush fire safety, he says many people think bush fires won't impact them but it is very important to have a fire safety plan for your family so everyone knows what they would do.

Whilst semi-retired, Ken keeps very busy on his farm working with cattle and horses and hosting farm visitors on holidays. Through his involvement with Rotary, he travels each year to the Himalayas or other mountains as a guide and high-altitude paraglider pilot, raising money for Rotary's pledge to rid Poliomyelitis from the world. This involves



travelling around and speaking to different clubs and organisations. He loves to get involved in Rotary's community activities, which are numerous.

Ken says "I am a very proud grandfather of 9 grandchildren. I also enjoy ocean sailing when I get the time."

If you too would like to make a difference to your local community or if you are already thinking about becoming a volunteer, all enquiries can be directed to EnquiriesBroughtonValeBerry@rfs.nsw.gov.au or check out the RFS Volunteer page at <https://www.rfs.nsw.gov.au/volunteer/join-the-nsw-rfs>



STILL PARADISE AT THE FARM DESPITE THE WET WINTER

A ROOKIE VOLUNTEER'S EXPERIENCE

At a Taste of Paradise Farm, sloshy mud and ankle-deep water this winter has not deterred the incredible humans and animals at the property from exhibiting everyday enthusiasm and moments of joy. In particular, the dogs, cattle, horses, goats and feathered friends have endured flooding, seemingly endless rain and cold conditions recently, conditions shared by all Berry residents and residents across many parts of NSW.

Despite this inclement weather I pulled on my boots and volunteered for the first time, a rookie. The journey began when I became inspired by the work done at A Taste of Paradise after attending an Open Day. An application followed then an Induction morning. I was hooked already! Now, a few months in, not a day I spend at the farm goes by without me learning new skills and being motivated with new farming project ideas for my own small rural property. Working as a team and sharing comradie are just two of the ingredients that make this volunteering experience work so well.

Just a few experiences I have relished so far include meeting newborn goats (kids), watching turkeys strut their stuff and transplanting the most delicious strawberries imaginable.

While I love my days at the farm, I sadly cannot commit to helping at the Berry Farmers' Markets on Thursday afternoons. At the moment, the charity is in need of volunteers to fulfil this important role. If you can spare a few hours to assist, please contact.

SUPREME MASTER TV
Constructive Programming for a Peaceful World

SupremeMasterTV.com

Broadcasting Wonderful News and Positive, Encouraging Programs 24 Hours a Day

Sharing Messages of Love and Peace That Create Positive Energy for a Better, Shining World

QR code

NATIONWIDE MARCH FOR PALESTINE IN NOWRA

STARTING AT
HARRY SAWKINS PARK
OPP COUNCIL CAR PARK

Sunday 12 Oct
12 noon

2 years of a calculated Genocide in Gaza

For more info;
Insta: [shoalhavenfriendsofpalestine](#)
FB: [ShoalhavenfriendsofPalestine](#) SFOP

QR code

Horizon Bank's business operations are Climate Active Certified!

Horizon Bank is proud to announce its business operations are officially carbon neutral, certified by the Australian Government's Climate Active program.

It represents the most rigorous and credible benchmark for climate responsibility in Australia, ensuring that certified organisations have accounted for and balanced their emissions through verified methods.

Respecting the environment is one of Horizon's core values, and Horizon has been working hard to put words into action.

Over recent years, Horizon has taken meaningful steps to reduce emissions where possible in areas such as electricity, cleaning and chemicals, machinery, vehicles, postage, courier & freight, refrigerants, stationery, waste, water and more.

Horizon has also invested in projects that reduce or remove carbon from the atmosphere such as Greenfleet; a not-for-profit environmental organisation that reforests using native plants.

This certification milestone is an important part of Horizon's broader sustainability journey.



Horizon Bank

horizonbank.com.au

Shop 3, 115 Queen St, Berry

☎ 0419 293 214

Horizon Credit Union Limited ABN 66 087 650 173 AFSL and Australian credit licence 240573 trading as Horizon Bank. 27 Stewart St, Wollongong NSW 2500.



We'll hear tales of adventure in the air at Coffee and Friends on the 22nd October at 10am. Our speaker is retired Commodore and aviator Vince Di Pietro who recently participated in the Outback Air Race, raising funds for the Royal Flying Doctor Service. The race started at Uluru and finished at Carnarvon, WA covering 3,800kms. There were 45 planes in this time trial which takes place every 3 years. Vince will tell us about team Charlie Alpha Foxtrot and the single engine Piper Cherokee PA28 which carried them on their adventure. The funds that were raised will help the valuable work of the RFDS who provide access to skilled doctors and nurses in remote areas of the country.

Everyone is welcome at the Uniting Church Main Hall (77 Albert Street) at 10am on Wednesday 24th September at 10am.

Berry Community Library

One of the many things we enjoy about being a Library volunteer are the wonderful discussions about books and authors that we have with the borrowers who come through the door. The latest recommendations we have received are *The Unquiet Grave* by Dervla McTiernan, *Here One Moment* by Liane Moriarty. Books by Toni Jordan and Sally Hepworth are also very popular. Crime Fiction favourite authors include Margaret Hickey, Hayley Scrivener and Chris Hammer.

Library Opening Hours

Monday and Wednesday 1-4pm
Tuesday Thursday and Friday 10-1pm
77 Albert Street, opposite the IGA carpark, behind the Uniting Church.
For more information contact Janet on 0425 220 258



Last lecture of the 2025 season! Come to our lecture, it is a wonderful and informal way to make friends and to get to know others in our community. For more information on ArtsNational, joining ANShoalhaven or purchasing visitor tickets, go to <https://www.artsnational.au/societies/shoalhaven/>.

Koh-I-Noor – The Most Famous Diamond in the World

23 October 2025 - 7.30pm - Berry Uniting Church Hall, 71-77 Albert Street Berry

Trace the remarkable journey of the Koh-I-Noor, the legendary 'Mountain of Light' diamond, from its ancient origins in India to its place in the Tower of London. This talk explores the diamond's rich tapestry of history—marked by desire, intrigue, violence, and political power—moving through the Mughal Empire to the British Empire and brought to life through art that vividly captures the drama and emotion of each era.

Georgina Bexon is an international art historian whose career spans the UK, Europe, USA and Singapore, encompassing lecturing, writing, consulting and collecting. She consults for the Oriental Club, guides at Tate Modern, and presents at major art institutions and conferences worldwide. Georgina is a Freeman of the Worshipful Company of Arts Scholars and a Fellow of both the Royal Society of Arts and the Royal Asiatic Society. Visitors are welcome. Visitors \$25 and Student Visitors \$15. Tickets at the door on the night or book through Trybooking: <https://www.trybooking.com/CWBGp>



DAVID BERRY HOSPITAL AUXILIARY



Our Street Stall last month was very successful and a big thank you to all who supplied cooking, craft and other items. The cooking always goes fast! Father's Day gifts were presented at the hospital, and were most appreciated by the recipients.

President Irene spoke at the last Community Get Together regarding the possible future uses of David Berry Hospital.

Fortunately, NSW Health Minister Ryan Park released a media statement that day, and said, in part: "The Minns Labor Government has today announced David Berry Hospital will remain in public hands and continue to offer healthcare to the community into the future. The Government has listened and will continue to work with health experts and community, including dedicated consultation with the local Aboriginal community, to explore various health related options for the site".

Minister Park also acknowledged the need for aged care in waiting facilities, for transitional use, to free up bed block, which is currently worse in the Illawarra Shoalhaven than in any other area of NSW. This has always been one of the suggestions by the Voice of David Berry committee.

We now wait for the final decision as to what health use will occupy the site.

For more information, please contact Irene Birks – 0408 096 109 or email dbhvoice@gmail.com. The auxiliary meet on the second Monday of the month at 10am in the Uniting Church Hall Berry. New members are most welcome.



71-77 Albert Street Berry

Come and join us

Sundays at 9.30am

in person or on Zoom

Zoom meeting link:

<https://tinyurl.com/xu6v4hw3>

Meeting ID: 916 5034 4362

Phone in no.: 02 8015 6011

email berryuniting@gmail.com

Phone: 0467 422 046

Web: www.berryuniting.org

Minister: Rev Gordon Bradbery

For pastoral care, weddings, baptisms and funerals, Gordon may be contacted on 0419 600 589 or at gordonbradbery@hotmail.com



BERRY PROBUS

Another enjoyable time at the Berry Probus club with membership expanding every month through the induction of new members at each meeting.

Our much-anticipated trip to Eden for a few days looked like it was going to be a wet one with rain forecast for the entire trip but after a wet drive to get there the sun came out and gave us a great few days away.

Our last two club Barbecues have been rained out but the last one for the year to be held in November should see clear skies and hopefully lots of sun shining.

Our separate Ladies and Men's morning teas are very popular with the men mostly solving the problems of the world while the women solve ladies' problems. Lunch after the meetings is being enjoyed at the Queen Street Café for those who want to partake.

Our club and guest speakers are always interesting, and we have not been disappointed, in the past few months we have enjoyed talks on simulated patients to Antarctica holidays, these talks are always

fascinating and help stimulate everyone's minds.

Probus is for retired people who want to meet likeminded people, who just want to enjoy their retirement with social outings, some fun, and lots of friendship and no fundraising. The theme for Probus this year is '**Reinvent your Retirement**' this is a great incentive to join a Probus club.

Meetings are held every second Tuesday of the month at the Uniting Church Hall, Albert Street (behind the Men's Shed) from 9.00 for 9.30 to 12.00noon. (parking in North Street) If you would like to attend a Probus meeting please ring our President, Carol Orr on 0418 276 808, or email berryprobus@outlook.com to let us know you are coming, we welcome likeminded people to visit, a great way to meet friends you didn't know before.

The Dunny and the Little Red Car – where are they now?

Ever wondered what happened to that Dunny in the grounds behind the old Flying Pig Gallery – an icon amongst the creepers at the end of the Albert Street carpark?

Well, the old Flying Pig Gallery is under re-development – take a look. The land at the back of the Gallery had to be cleared and the owners thoughtfully donated the old Dunny to the Berry Museum. After a lot of work to brace it, so it could be moved safely, it is now in the grounds of the Berry Museum where it is undergoing repairs.

And what of that Little Red Car that used to sit outside the Berry Pharmacy, giving much fun and joy to local children and visitors for 20 cents a ride? The car came with the purchase of the Pharmacy from Lance Sewell in April 1986. It was in use until March 2020 when Covid struck and was put into storage. In 2022, pharmacist, Ross Hobson, kindly donated it to the Berry Pre-school. Then, in 2024, it was moved to the Berry Museum, where it is on display but, for safety reasons, no longer functional. Perhaps your children – or even you in younger days! – enjoyed a ride in it.

Both items, now saved for posterity by the Museum, are part of Berry's heritage – as are the many artefacts in the Museum exhibiting past trades and preserving the way of life and history of the area. The Museum also houses family history records.

Perhaps you have stories to tell about the Dunny or the Little Red Car, or other artefacts. If so, we would love to hear from you.



Berry Museum

135 QUEEN STREET BERRY

OPEN HOURS: Saturdays, Sundays, School Holidays and Public Holidays 11.00am-3.00pm

FREE ENTRY www.berryhistory.org.au

If you'd like to join us, please call in to the Museum and have a chat, call (4464 3097) or email us berrymuseum@bigpond.com - We look forward to meeting you.



Our favourite event of the year is coming up. Berry Riding Club is hosting Berry Interschool Equestrian Championship over three fun filled days, from Saturday 4th to Monday 6th October.

School aged students from kindergarten to year twelve are eligible to enter their favourite disciplines and compete in classes against students in the same year group. Students can choose from a wide selection of events, dressage, show riding, show jumping, sporting and eventing. It's a favourite event as we have students return year after year. We see them growing and see how their riding skills develop as time passes. It's always a pleasure to see good sportsmanship on display too.

The smiles on faces when they win a place, or simply finish an event after a pleasing performance. The positive reactions are worth gold to their parents and especially to all the volunteers who work hard the month or so before preparing for interschools. Families travel quite long distances with their children and their horses to come to Berry Interschools. We are looking forward to seeing families again who are travelling from as far south as Bega and from Newcastle to the north, 180 riders in total from 120 different school. The families love the fun of camping with their horses at Berry Showground plus the easy walk into town for shopping and dining.

Special thanks go to our local sponsors supporting the Berry Interschool Championship - Illawarra Equine Centre, Regal Riding School, Durham Park Agistment and Berry Rural Co-Op. And, to the Rotary Club of Berry for manning the canteen. Thank you!

Following our hectic Interschool Championship weekend our members will enjoy a Working



Equitation Practice Day on Saturday 11th October and Clear Round Jumping on Saturday 25 October. Always busy at Berry Riding Club (when the weather is in our favour).

We wish everyone the best of luck and safe travels for our visiting school competitors.



ANGUS GEORGE CHISHOLM MILLER (GUS) 1925 – 2025

On 4 August, Gus Miller was called home to be with the Lord.

Gus was the second son to William & Nellie (Winnie) Miller and a brother to Keith & Donald.

His church life at Scots' began when he was born, as his parents were members of the church. He first attended Church 'up on the hill' as it was referred to. It was situated on the corner of Victoria and George Sts. Gus continued to worship in the new church when it was relocated to where it is situated today.

Gus attended Sunday School and fellowship in his younger days. His Christian life with Scots' involved Sunday School teaching where he was superintendent for many years. This involved organising the curriculum, the anniversaries and the Sunday School picnics, where all the children would hop on the back of the old blue Austin truck – no sides and travel to Gerroa for the picnic.

Gus became an elder and eventually the Session Clerk which again was a position he held for many years. There were many years where Scots' was a "vacant" charge and it was up to the Elders and the Session Clerk to arrange someone to preach each week and someone to play the organ. There were many occasions when there was not an organist so Gus would bring out his Euphonium and lead the singing.

In later years Gus was a valued member of the congregation, always taking an interest in the Church Family and visitors alike.

His greetings and enthusiastic welcome to all will be always remembered.

Berry Kids Club, 2nd & 4th Fridays each month. Enquiries to Isaac Jung, minister Presbyterian Church.



Scots' Presbyterian Church, Berry

Minister: Rev Isaac Jung

Service Time

Worship Service 10am

Jesus And Me (JAM)

& High School Bible Study 10am

Bible Fellowship Groups

Monday 2pm • Thursday 9.30am • Friday 10am

Activities

Kids' Club

Presbyterian Womens' Assoc

Mens' Group

Ordinary People worshipping
an Extraordinary God

www.berrypresbyterianchurch.net.au

02 4464 1020

Cnr Alexandra Street & Victoria Street, Berry



Berry & District Garden Club

October is the Berry and District Garden Club's big month with our annual Berry Gardens Festival taking place over the four days from Thursday October 16th to Sunday the 19th. There are seven amazing gardens in this year's Festival with six of the gardens new to the Festival. All gardens open from 10am until 4pm each day. All of the gardens details and views can be seen on our Facebook and Instagram pages: [berrydistrictgardenclub](#) or pick up a guide on the day at each gate or around town at various retailers before the Festival. Tickets can be purchased either at the individual garden entry gates during the Festival, at the stall in the Broughton Mall in town or online via Humantix. All the monies raised by the Gardens Festival go to a wide range local Shoalhaven charities and community projects. Our October meeting will be held on Tuesday the 21st at St Lukes Church Hall at 1.30pm, there will be a guest speaker and all visitors are welcome.

Our motto:

Friendship through Gardening.

Secretary, Margaret Street,
welcomes enquiries at
secretary@berrygardens.org.au

Shoalhaven Local Approvals Policy adopted

8 September 2025

The updated Shoalhaven Local Approvals Policy (LAP) comes into effect this month after it was endorsed by Council.

The policy outlines the activities that require approval from Council in accordance with Section 68 of the NSW Local Government Act 1993, including:

- Footpath dining
- Street stalls
- Water supply
- Installation of sewerage management systems
- Drainage
- Installation of caravans/ manufactured homes
- Operation of mobile food vans.

The policy also establishes exemptions for certain activities that do not require approvals, and the criteria needed to seek an approval or an exemption.

A local approval is different to a development consent issued under the NSW Environmental Planning and Assessment Act 1979 and may be required on its own or in addition to a development consent.

The LAP was adopted by Council at the Ordinary Meeting on 12 August. Part one of the policy has also received approval from the NSW Department of Planning, Housing and Infrastructure and the NSW Office of Local Government.

For more information visit Council's Policies web page.

BROUGHT TO YOU BY THE
BERRY ALLIANCE TOWN CRIER



DEBBIE KILLIAN ELECTED TO COUNCIL

15 September 2025

Debbie Killian is the newly elected Shoalhaven Ward 3 Councillor following an uncontested countback election by the NSW Electoral Commission.

Cr Killian replaces Natalee Johnson who announced her resignation on 11 August 2025.

With more than 30 years in public service and not-for profit sectors, Cr Killian has been a teacher, a youth worker, a health worker and senior manager in health and local government.

Cr Killian will be sworn in this week by Acting CEO Brian Barrett. Due to previously planned commitments, Cr Killian will attend her first Ordinary meeting in October.

Shoalhaven City Council is made up of 13 Councillors including a Popularly Elected Mayor. There are four Councillors representing each of the three wards. Information and contact details for all Councillors can be found on Council's website.

BROUGHT TO YOU BY THE
BERRY ALLIANCE TOWN CRIER



TRIVIA NIGHT

Raising Funds for ROMAC

Rotary

PEOPLE OF ACTION



Saturday 25th October 2025
7pm for 7.30pm start

Gerroa Boat Fisherman's Club

BOOK A TABLE - 8 People for \$240 Individuals for \$30



PAY BY DIRECT DEBIT

Account Name: GERRINGONG ROTARY
BSB Number: 633 000
Account Number: 167 571 645
Reference: YOUR NAME



Rotary Oceania
Medical Aid
for Children

ROMAC - ROTARY OCEANIA MEDICAL AID FOR CHILDREN

Australia and New Zealand Rotary Clubs provide surgical aid for children from developing countries from our Pacific Region in the form of life-changing and/or dignity-restoring surgery not accessible to them in their home country. Rotary families host and care for the child and their parent while they are in Australia or New Zealand.



What an incredible weekend we had at the 2025 Berry Farm & Lifestyle Field Days.

The sunshine, the crowds, the smiles, the world record... it truly was a Field Days to remember. None of it would have been possible without the support of so many.

To our wonderful sponsors - your backing makes this event possible, and we are so grateful for your generosity:

GOLD Sponsors: Millpaca, 2ST/Power FM and Web Design Solutions NSW

SILVER Sponsor: Berry Vet Clinic

BRONZE Sponsors: Parnell & Brien, Ray White Rural, The Grange and Milkwood Bakery

SUPPORTERS: Silos Estate, Berry Rural Store and Berry IGA

And thanks to our new DOG SHOW Sponsors:

Blue Ribbon Sponsor - Hamilton Pet Care

Red Ribbon sponsors - Berry Vet Clinic, Horizon Bank, Ryans Turf

White Ribbon sponsors - Archie Youl The Corgi, Mr Bern & Ms Gus, Hotondo Homes, IV Coffee, Jordie Jordan Welsh Springer Spaniel and Web Design Solutions NSW

The Berry Farm & Lifestyle Field Days is a fundraising endeavour of the Rotary Club of Berry and is truly a community effort.

Thank you, everyone.

A World Record in Berry!

History was made at the Berry Farm & Lifestyle Field Days.

A two-year-old Belgian Malinois, handled by Deanne Janszen achieved a jaw-dropping World Record in the International Sport of K9 SuperWall — scaling an incredible 3.28m (10'9") vertical climb.

PHOTO BY RICHARD MILLER



Yard Sale

Household, Farm & Garden Goods

Sat 25 Oct

8am to 2pm

Peppergrove Farm
80 Albany St Berry



All donations of goods for sale will raise funds for Rotary's **END POLIO NOW** campaign.

PLUS on the day:

Sausage sizzle, coffee, sandwiches & cakes.

If you have unwanted saleable goods hanging around and wish to donate them to help fund Rotary's cause, then ring Ken on 0418 205 225



With your support we are building an OFF-LEASH DOG PARK IN BERRY

After completing the Rotary Nature Play Park and the Centenary of Trees, the Rotary Club of Berry's next community project is the *Rotary Dog Park - Off-Leash Area*.

This is a community-led project and we need community sponsorship to help fund it.

Come along with your dog to our **"Dog Park Play Day"** launch on site in North St

11am Sunday 16 November

- ◆ See the design plans
- ◆ Find out about the sponsorship options to get your name in the park
- ◆ BBQ and other activities



Help make a difference - support ROTARY



PLANT PROPAGATION NURSERY

Growing Plants Growing Community

REPLACEMENT PLANTS for LANTANA

People new to the area often ask about removal of, and suitable plants for replacing Lantana (and other weeds).

Volunteering with a Landcare or Bushcare group is a hands-on way to gain experience about weeding techniques, as well as learning to identify the 'goodies' and the 'baddies'.

South Eastern Local Land Services and other professional Environmental businesses offer help too.

Here are a few suggestions to get you started to deal with Lantana. The suggestions have been gleaned from hard experience.

1. Don't remove all the Lantana at once, maybe only a couple of square metre patches and leave living Lantana patches in between. If using herbicide, use a splatter gun to spray the top of a patch. The herbicide will only affect the upper leaves of the lantana, any new native seedlings that may be growing underneath will not be affected. The dying leaves will provide mulch under the plant and the branches will still provide protection for little birds to hide from predators. The plant will gradually die and the stem can then be cut as low to the earth as possible, and then painted with herbicide. Don't remove the stem as it will continue to stabilize the soil and prevent erosion.

You will be amazed what natural regeneration will occur once light gets to the soil.

This takes time and is best not rushed. Be vigilant, as new weeds such as tobacco plant, cobbler's peg and moth vine are opportunistic. Study your weeds, because many native juvenile seedlings can resemble weeds. When in doubt, don't pull out.

2. If you wish to plant, rather than wait for natural regeneration, select plants that are local to your area and plant trees, shrubs and ground covers at the same time. The ground covers provide the canopy for the soil, the shrubs provide the canopy for the ground covers and the trees provide the canopy for the revegetation.

In the nursery we have a wide range of plants that are suitable for the Berry area. If you need advice about plants, the volunteers are happy to help.

Thorny plants such as **Orange thorn - *Pittosporum multiflorum*** and **Tree violet - *Melicytus (Hymenanthera) dentatus*** are great replacements for Lantana, providing habitat and food for little birds. Orange thorn is fruiting now and Tree violet will be flowering and fruiting during summer.

Look them up on www.growingillawarranatives.org



Landcare BERRY BERRY'S ANCIENT BLACKBUTTS

By Kelvin Officer

Berry's most famous Blackbutt (*Eucalyptus pilularis*) was the 'Bum Tree', an old-growth tree with a 'bum', at the intersection of Beach and Gerroa Roads before the SCC cut it down in 2014. A project by Berry Landcare using radiocarbon dating and tree ring analysis revealed the tree was between 334 and 388 years old. It was around 35m tall and had a trunk of diameter of 1.70m ('at breast height' (abh), 1.4m above the ground) and a circumference of 5.34m. This gives an average diameter growth rate of between 5 and 4.4mm per year.

As part of establishing a register of significant trees for Berry, 'Trees We Value', our chairperson David Kraus has been recording other large Eucalypts in the district. On private land on the northeastern slopes of Moeyan Hill a large blackbutt was once a paddock tree and is now a grandparent in a new forest. It has a trunk diameter of 1.73m (abh) and circumference of 5.45m.

On the grounds of David Berry hospital (DBH), a remnant lowland forest including rainforest, boasts two massive blackbutt canopy trees. One, towering above the remaining forest, has a trunk diameter of 2.3m (abh) and circumference of 7.3m. A further example has a trunk with diameter 1.7m (abh) and circumference of 5.2m.

With caution, the Bum Tree growth-rate can be used to suggest the age of other same-species trees, giving a 330+ age for those of similar size, and some 500 years for the large DBH tree. Differing growing conditions will alter growth rates however and the Bum Tree grew on sand, well away from a drainage line. This suggests a slow growth rate compared to these newly recorded trees which grow on bedrock soils, with one close to a creek.



Amplified music will be from 1.30 p.m. to 10.00 p.m. and sound checks may occur prior to these times.

A road closure will be in place on Alexandra Street adjacent to the showgrounds from 6.00 am to 11 pm and drop off/picks ups will occur on Station Road on Sunday 26th October 2025.

All Alexandra Street residents will have unlimited access to their residences on presentation of their driver's licence. Full security will be on site during the event.



**Berry Showgrounds
Sunday 26th
October 2025**

The Red Hot Summer Concert at Berry featuring Crowded House and special guests will take place on Sunday 26th October at the Berry Showground.

www.redhotsummertour.com.au

For further information please contact Deb Alexander at Face to Face Touring on 0414 857 738 or deb@facetofacetouring.com.au

Raine & Horne[®] Berry

Why Choose Raine & Horne Berry?

1. We sell the MOST Properties in the Berry Region



Based on Properties Sold in 2025 in the Berry Region (as of 15/09/2025) Source: <https://www.realestate.com.au>

2. We have the MOST Properties for Sale in the Berry Region



Based on Properties For Sale in the Berry Region (as of 15/09/2025) Source: <https://www.realestate.com.au>

Why is this Important?

With More Agents, More Listings = More Open
Homes = More Buyers = More Sales.

Our Properties Sold in the past month



1/124 North Street
SOLD OFF-MARKET to a Database Buyer



1/9 Host Place, Berry
SOLD OFF-MARKET to a Database Buyer



32 Banool Circuit, Bomaderry
Family Home with Picturesque Country Views



35 Sheraton Circuit, Bomaderry
Prime, Central & Sought-After



126 McMahons Road, North Nowra
5 Bedrooms on 733SQM! (approx.)



4 Ravenscliffe Road, Shoalhaven Heads
Immaculately Renovated

Our Properties Sold in the past month



9 Depot Road, West Nowra
Renovator's Opportunity on 658sqm (approx.)



20 Catalina Place, Badagarang
Premium Orientation, Exceptional Value



17 Arborea Place, Bowral
The Perfect Blend of Location & Accessibility



2/19 Murchison Street, Albion Park
Peaceful Villa Living in a Handy Location

Our Newly Listed Properties in the past month



511B Coolangatta Road, Far Meadow
~Magnolia Meadows~ Between Berry & the Beach



21 Connors View, Berry
'The Barn' by Mann Made Design + Construct

Our Newly Listed Properties in the past month



12 Bundewallah Road, Berry
80-Acre Sanctuary in Prestigious Bundewallah



68 Queen Street, Berry
Charming Early 1900s Character Home in Village



36 Parker Crescent, Berry
Modern Family Living in Huntingdale



6 The Gables, Berry
Entertainers Delight Close to Berry Village



6 Windsor Drive, Berry
Family Home with Secure Backyard and Additional Potential



1010 Kangaroo Valley Road, Bellawongarah
A Sanctuary of Light, Landscape & Legacy



24 Spoonbill Place, Albion Park Rail
Refined Country Living With Coastal Convenience

Your personalised market
report starts here. – **Just Scan**



Our Team

Harmonious blend of talent, passion, and experience

The true essence of a thriving business lies not solely in its achievements, but in the exceptional caliber of its people.



Jacquie Crapp **0429 104 011**
Director



Sonia De Jesus
General Manager



Tim Muckenschnabl **0407 356 631**
Licensed Real Estate Agent



Ryan Rigg **0428 838 097**
Licensed Real Estate Agent



Jason Dorling **0438 425 574**
Licensed Real Estate Agent



Corey Hamilton **0474 705 842**
Licensed Real Estate Agent



Susie Timbs **0414 767 707**
Licensed Real Estate Agent



Leane Pugh **0409 319 719**
Licensed Real Estate Agent



Mira Edwards **0414 247 863**
Licensed Real Estate Agent



Maddy Crapp **0498 513 615**
Sales Associate



Lizzy Barton **02 4464 1300**
Sales Support



Melissa Lee **02 4464 1300**
Sales Support



Leonie Blacka **02 4464 1300**
Property Manager



Eftihia Stewart **02 4464 1300**
Property Manager





The Shoalhaven is a vibrant boating area with incredible locations, both inshore and offshore. Volunteers at Marine Rescue Shoalhaven work around the clock to keep boaters safe on local waterways, responding to calls for assistance at any time of the day or night.

With the boating season less than two months away, Marine Rescue Shoalhaven is encouraging community members to support its mission of saving lives on the water by volunteering with the unit. Beginning in December, Marine Rescue Shoalhaven will run a six-week radio operator training course - one evening a week at the Crookhaven Heads base.

Marine Rescue Shoalhaven Unit Commander Marty Kaye said new volunteers do not require any prior experience.

"We teach members everything they need to know. Marine Rescue NSW provides free training, and successful participants will receive a Short Range Radio Operator Certificate of Proficiency.

With this qualification, they will be able to join other volunteers up and down the coast in monitoring marine radios and providing a valuable community service, helping us save lives on the water."

"Marine Rescue NSW radio operators are the link between the land and the sea," Unit Commander Kaye added. "We monitor vessels out at sea between Kiama and Jervis Bay and anywhere on the Shoalhaven River". Since 2020, volunteers at Marine Rescue Shoalhaven have completed more than 400 search and rescue missions, with the unit's highly skilled radio operators providing crucial communications support.

Marine Rescue Shoalhaven is also recruiting and training vessel crew and fundraisers.

Visit www.shoalrescue.com.au/volunteering to learn more about volunteering or to sign up for the course, or call Marine Rescue Shoalhaven on (02) 4446 9900.



BERRY CWA

"Back to School!"

The Berry Branch of CWA was once again asked to help at the Grand Parents' Day at the Berry Public School. Due to the uncertain weather, the programme was changed and we were able to join the audience to see the dancing entertainment, congratulations to the teachers and pupils, it was excellent and we thoroughly enjoyed it. The cake stalls proved to be very popular again, we sold virtually all the cakes. We value our time at the school, it is a privilege to be invited to be of help. September too, will see the pupils of the Berry Public School bring to our rooms, their dioramas, posters or booklets of a country of study, this year the country is South Korea. Judging will be in the morning, then pupils will revisit to collect their projects in the afternoon but, most importantly, indulge in a special afternoon tea.

The CWA President of NSW, Tanya Jolly, CEO Danica Leys and Andrew Connolly, Policy Manager met with Paul Scully MP, (Planning & Public Spaces) Jody Harrison MP (Women, Seniors, Prevention of Domestic Violence & Sexual Assault) and Dr. Joe McGirr MP to discuss a range of policy priorities. The CWA of NSW have a frequent presence at Parliament House to ensure that the members' voices are heard, advocating for women, families and communities.

The Berry Garden Festival soon approaches, the Berry CWA will be at **garden number 3, Moraea Farm, 450B Coolangatta Road, Berry**. We will be serving refreshments there so hoping for clement weather, also looking forward to seeing you.



Redberry Quilters have had a busy few months with a quilting retreat, some wonderful guest speakers and the initial meetings to start preparations for the bi-annual Berry Quilt show which will be held in May, 2026.

In July members and friends enjoyed four relaxing days of sewing, good food and friendship at a beautiful local venue for a quilting retreat. It is hoped that this will become an annual event for Redberry. The group also enjoyed guest speakers from our own membership in July and August. Beautiful presentations were made by Debra Ross and Anne Bailey who showcased their work and spoke of their artistic journeys.

The September guest speaker was Clair Carson from Shoalhaven Occupational Therapy who gave a wonderful practical and useful session on assistive technology and home modifications that are useful for anyone looking after older or disabled family members. The October guest speaker on the 24th October will be another Redberry member, Lesley Bell. Come along and see some beautiful quilts and hear about Lesley's inspiration and techniques. Redberry meetings and guest speakers are held on the 4th Friday of the month at St Luke's Church Hall in Princess St, starting at 9.30.

Visitors are welcome to both the meeting and to hear the guest speaker.

**FOR MORE INFORMATION, PLEASE CONTACT
REDBERRY QUILTERS ON: Email: redberrysec@gmail.com**



SCOOTERS WHOLESALE
WE COME TO YOU



SKILL & CARE

**GENUINE
ADVICE & SUPPORT**

SERVICE & REPAIR
WE GO THE EXTRA MILE SO YOU CAN

LOCAL & MOBILE
WE COME TO YOU, TO YOUR DOOR

Scooters Wholesale are experts in mobility scooters and powered wheelchairs. We are a local, family owned business and have been in operation since 1992. We have showrooms in South Nowra, Batemans Bay & Ulladulla, as well as a fleet of mobile service vehicles operating between Bulli and Batemans Bay. Visit our showrooms or let us bring the showroom to you!



4422 8438

28 Quinns Lane, South Nowra
www.scooterswholesale.com.au

Community Groups

BERRY COMMUNITY GROUPS

Berry Alliance Inc. PO Box 202 Berry info@berryalliance.org.au www.facebook.com/berrytowncrier	0449 569 059
Berry Town Crier PO Box 202 Berry towncrier@berryalliance.org.au towncrier@berryalliance.org.au www.berryalliance.org.au	0428 037 572
Australian Labor Party Berry Shoalhaven Heads Branch PO Box 325 Berry secretarybshlp@gmail.com	4464 2446
Australian Red Cross Berry Branch Margaret 0415 887 308 margaret.walsh21@bigpond.com	0411 120 034
Berry Community Activities Centre (BCAC) valhaz@bigpond.com www.facebook.com/berrymarkets	4464 2500
Berry Community Library At Berry Uniting Church berrycommunitylibrary@gmail.com	0425 220 258
Berry Courthouse Conservation Committee PO Box 218 Berry 2535 functions@berrycourthouse.org.au www.berrycourthouse.org.au www.facebook.com/berrycourthouse	0458 369266
Berry & District Historical Society www.berryhistory.org.au berrymuseum@bigpond.com	0413 893 508
Berry Evening VIEW Club janchambers49@hotmail.com	0490 054 574
Berry Masonic Village Auxiliary icbsle@bigpond.com	0411 120 034
Berry Meals on Wheels meals2535@gmail.com www.northshoalhavenmeals.org.au	0418 422 088
Berry Men's Shed berrymensshed@telstra.com	0448 712 131
Berry Probus Club berryprobust@outlook.com	0409 651 298
Broughton Vale / Berry Rural Fire Brigade EnquiriesBroughtonValeBerry@rfs.nsw.gov.au	0407 469 671
Country Women's Association Berry Branch 79 Victoria St., Berry berrycwasecretary@gmail.com	0413 187 148
David Berry Hospital Auxiliary icbsle@bigpond.com Irene Birks 0411 120 034 margaret.walsh21@bigpond.com Margaret Walsh 0415 887 308	
Huntingdale Park Resident Action Group PO Box 325 Berry 2535 rick.bmfberry@bigpond.com	4464 2446
Masonic Lodge Broughton 131 Agricultural Hall, Berry Showgrounds kevinwant@gmail.com	0401 395 401
Rotary Club of Berry berryrotary@gmail.com www.berryrotary.org.au	0409 318 171
St. Vincent de Paul Society Vinnies Shop 1117B Queen St. Berry	HELPLINE 4421 0390 4464 3940

BERRY COMMUNITY GROUPS CONTINUED

Voice of David Berry Hospital margaret.walsh21@bigpond.com www.voiceofdavidberryhospital.org	0415 887 308
Zonta Club of Berry Inc. berry@zontadistrict24.org zontaberry.com.au Facebook – Zonta Berry	0402 394 211
Arts National Shoalhaven www.adfas.org.au/shoalhaven artsnationalshoalhaven@gmail.com	4464 2619
Berry Silver Band Kaye – kayecj@westnet.com.au adrian@fewwordsp photography.com.au or 0427 775 100	0490 037 619
Berry Spinners & Weavers info@bswi.au	0407 734 410
Knit With Love St. Lukes Church Hall – 68A Princess St. Berry Lyn Oades – terryandlyn@gmail.com	0404 562 772
OpenField Arts Festival PO Box 5, Berry 2535 www.openfield.org.au info@openfield.org.au	0439 750 029
Red Berry Quilters redberrysec@gmail.com kerrie.piper@gmail.com	0420 301 511
Berry Uniting Church berryuniting@gmail.com 71 Albert St., Berry	0466 717 254
Meroo Union Church (Friends of) rim@virtualivty.com.au Facebook: Meroo Union Church	4448 6048
Scots' Presbyterian Church, Berry Rev. Isaac Jung colin@daydesign.com.au www.berrypresbyterianchurch.net.au	4464 1903
South Coast Life Church josh@southcoastlife Erica Noonan, Lead Pastor www.southcoastlife.org F: South Coast Life Church	0402 699 732
St. Luke's Anglican Church 87 Victoria Street Berry www.berryanglican.org office@berryanglican.org	4464 1058
St. Patrick's Catholic Church nowra@dow.org.au North Street Berry www.nowraparish.org.au	4423 1712

EDUCATION AND PLAYGROUPS

Berry Computers for Seniors Uniting Church Hall, 77 Albert St, Berry berrycfs@gmail.com	0414 982 010
Berry Community Pre-school berrypreschool@bigpond.com www.berrypreschool.org.au	4464 1764
Berry Kids Club Berry Presbyterian Church sueskinner83@gmail.com	0419 634 365
South Coast Life Church – Let's Play (Playgroup) Dale Wells 0409 262 971 Alison Page 0421 186 127 www.southcoastlife.org/lets-play	

EDUCATION AND PLAYGROUPS CONTINUED

South Coast Kid's Club Sharayah Lardner 04073 791 886 sharayah@southcoastlife.org www.southcoastlife.org/kids-club	
Berry Youth Group kateweakley74@gmail.com www.southcoastlife.org/berry-youth.html	Kate Weakley 0403 915 728
Berry Landcare www.landcare.nsw.gov.au/groups/berry-landcare/ www.facebook.com/Southerners2535/	0427 255 417
Berry & District Garden Club secretary@berrygardens.org.au www.berrygardens.org.au	0411 477 997
Berry Public School Plant Propagation Berryplantpropagation@gmail.com https://www.facebook.com/BerryPlantProp Natural Studies and Plant Propagation Centre BPS	4464 3911
Berry Bridge Club Inc. ceciliemlewis@gmail.com www.bridgewebs.com/berry	0417 207 130
Berry Men's Bowling Club draym@bigpond.com	4464 2995
Berry Riding Club info@berryriddingclub.com www.berryriddingclub.com	0410 506 143
Berry Tennis Club PO Box 133 Berry NSW 2535 berrytennis@hotmail.com	
Berry Women's Bowling Club	4464 3053
A Taste of Paradise admin@atasteofparadise.org.au www.atasteofparadise.org.au	0490 060 251
Berry Community Library 77 Albert St (Berry Uniting Church Hall) berrycommunitylibrary@gmail.com	0425 220 258
Berry Public School Plant Propagation Berryplantpropagation@gmail.com	4464 3911
Berry Writers Festival info@berryyritersfestival.org.au www.berryyritersfestival.com.au	
Bundanon Trust www.bundanon.com.au	4422 2100
Pink Up Berry Raises Money for the McGrath Foundation pinkupberry@gmail.com	0428 005 910
SALT Ministries Supporting those in need 5-19 Birley St. Bomaderry info@salt.org.au or Facebook	4480 5028
Shoalhaven Education Fund chair@sef.org.au www.cef.org.au/shoalhaven	0414 379 059

Any Berry Community group who are yet to provide their updated details (after your AGM elections for example) please email them to info@berryalliance.org.au. If you need a form please email us for that. Please ensure that we always receive any updates or changes.

Berry Alliance and Town Crier Management Committee

EMERGENCY 000

Police Assistance Line (Non-Urgent Police Reports) 131 444
Berry Police 4464 2175
Fire & Rescue NSW 02 4478 4924

Rural Fire Brigade (Broughton Vale) 4464 1522
SES For Emergency Help in Floods & Storms 132 500
Ambulance - always call 000



SHITBOX RALLY

In 2024, Wayne and Steve drove nearly 4,500km from Berry to Alice Springs, in an old Peugeot, for the Shitbox Rally. With huge support from the Berry community, they raised more than \$16,000 for the Cancer Council.

This October they're doing it again, taking the trusty Peugeot from Alice Springs to the Gold Coast in another epic 4,000 loop filled with dirt roads and corrugations.

If you'd like to contribute, you can make a tax-deductible donation to the Cancer Council at <https://spring2025.shitboxrally.com.au/spark-not-found> or via the QR code.



DEVELOPMENT APPLICATIONS AND DETERMINATIONS

Here is a list of the most recent Shoalhaven City Council Development Applications and Determinations since the list was produced in the last Berry Town Crier. The information on how you can see details and follow these applications, to make submissions and to follow an application is provided in the Town Crier each month. It is also provided in the "Friends of the Berry Town Crier" Newsletters sent out regularly between editions of the Town Crier.

CHANGES – You will note that we are no longer listing Determinations unless it is a significant application and in particular if a DA is Rejected. If a community member has an interest in any DA then all details are provided on the Council Web Site: <http://www.shoalhaven.nsw.gov.au/masterviewUI/modules/ApplicationMaster/Default.aspx> Development Application Tracking.

Also, you may note that there are an increased range of DA, PCD, MA titles to their number.

"DA" is **Development Application** and is still currently the standard application.

"PCD" is **Private Complying Development** an application being submitted and approved by a private Assessor. These are usually signed off and approved in a couple of days.

"MA" means **Modified Application** – sometimes previously described as a variation. But it is an application for a modification to an existing approval.

DAS, MODIFICATIONS, REVIEWS & PRIVATE CERTIFIERS COMPLYING DEVELOPMENTS – APPLICATIONS RECEIVED

- MA2025/1206 – Approved – 21/07/2025 – S4.55(1A) to DA23/1329 – Reduce the extent of the proposed enclosure of the existing rear verandah – 30 Pulman Street, Berry
- DA2025/1436 – Approved – 31/07/2025 – Roof replacement to staff accommodation Cottage at Berry Sport and Recreation Centre – 660 Coolangatta Rd., Berry
- DA2025/1087 – Approved – 29/07/2025 – Demolition of shed and construction of a dwelling house, swimming pool, tennis court, landscaping and site work – 142 Woodhill Mountain Rd., Berry
- MA2025/1179 – Approved – 07/08/2025 – S4.55(1A) to DA2024/1820 - Internal and external amendments - 201 Agars Lane BERRY
- MA2025/1200 – Approved – 08/08/2025 - 4.56 to SF10965 - amendment to remove a small internal noise wall near Lots 311 and 312, improving visual amenity and reducing maintenance. It also proposes boundary adjustments between these lots, resulting in Lot 311 increasing in size and Lot 312 decreasing. Conditions 1 and 10 will be updated to reflect the revised plans and acoustic assessment - Hitchcocks Lane BERRY
- MA2025/1221 – Approved – 08/08/2025 – S4.55(2) to DA22/1006 – Alterations and additions to existing dwelling and shed – 171B Strongs Rd., Jaspers Brush

DAS, MODIFICATIONS, REVIEWS & PRIVATE CERTIFIERS COMPLYING DEVELOPMENTS – APPLICATIONS DETERMINED

- DA2025/1532 – Approved – 11/07/2025 – Swimming Pool – 107 Parker Crescent, Berry
- MA2025/1195 – Approved – 10/7/2025 – S4.55(1A) DA2023/3181 – Deletion of the condition 17 to allow for the existing concrete footpath to remain – 122 Queen St., Berry
- DA2025/1552 – Approved – 18/07/2025 – Swimming pool, retaining walls and deck – 18 Serenity Ridge, Berry
- MA2025/1219 – Approved – 15/07/2025 – S4.55(1A) to DA2024/1687 – Modification to window 11 and 12, underground rain water tank, stormwater drainage and Basix Reports are amended – 30 Serenity Ridge, Berry

Brought to you by the Management Committee of the Berry Alliance Town Crier

More updates (between issues of the Town Crier) can be found in the Friends of the Berry Town Crier Newsletters which are emailed out.

Subscribe to be a Friend of the Berry Town Crier by emailing info@berryalliance.org.au with your name, email address and telephone number with your request

"Subscribe to Friends Newsletter"

Friends also receive an "E" version of each Town Crier prior to delivery) plus can includes reminders of Deadlines and extended article on a number of issues.



As you know the Berry Alliance Town Crier is a strong supporter of Sustainability and we regularly run articles and a column on this subject and have done for many years.

We could not let this notice go by without advising you of the opportunity.

Recycling of soft plastics has been a major issue for a long time and this is a good forward step.

Worth the trip to our North this time.

Shoalhaven City Council are in this group and we look forward to an opportunity closer to home in the future. A great step forward.

Details Below.

Link here : <https://isjo.nsw.gov.au/soft-plastics/>

Join Our Soft Plastics Drop-Off Events!

We invite you to participate in our soft plastics drop-off events, conveniently located throughout our region.

What are Soft Plastics? Soft plastics are flexible materials that can be easily crunched into a ball. Here are some examples of the types of soft plastic packaging we accept:

- **Plastic bags:** clear and coloured
- **Biscuit and snack wrappers**
- **Chip packets** and other silver-lined snack wrappers
- **Fresh and frozen food wrappers/bags**
- **Pasta bags, rice bags** (both plastic and woven types),
- **Bread bags, and cereal liners**
- **Cling wrap, bubble wrap, and snap lock zip bags**
- **Document sleeves, mail satchels, and carrier bags**
- **Plastic pet food bags**



IMPORTANT REMINDER:

Ensure your plastics are **clean, empty, and dry** before bringing them to the event.

Dates and times will be added as they are confirmed.

Details on event locations and times.

- **Sunday 14th September, 8am - 12pm @ Albion Oval Carpark, Ash Avenue Albion Park Rail**
 - **Saturday 25th October, 8am - 12pm @ Ray Robinson Field Carpark, Moray Rd, Towradgi**
 - **Saturday 8th November, 8am - 12pm @ Kiama waste and recycling depot, Riverside Dr, Minnamurra**
 - **Monday - Thursday 4:15pm - 4:45pm and Saturdays 8am - 10:45am @ Flagstaff Group 262 Nolan Street, Unanderra**
- No access outside these times, material must be CLEAN, DRY, EMPTY**

TRADES & SERVICES DIRECTORY

ADVERTISING RATES

DISPLAY ADS

1 Column

Single rate = \$110 or
Repeat rate = \$297 (\$99 x 3 issues)
Dimensions: 10cm H x 6cm W

2 Column

Single rate = \$143 or
Repeat rate = \$363 (\$121 x 3 issues)
Dimensions: 10cm H x 12cm W

3 Column

Single rate = \$176 or
Repeat rate = \$495 (\$165 x 3 issues)
Dimensions: 10cm H x 18.5cm W

Full Page

Single rate = \$363
or
Repeat rate = \$900
(\$300 x 3 issues)
Dimensions:

27cm H x 18.5cm W

* Repeat rate applies to 3 or more issues with no changes and one invoice to be paid up front.

TRADES & SERVICES



1 issue = \$60
6 issues = \$252
(\$42 each issue)

12 issues = \$432
(\$36 each issue)

Dimensions:
6cm W x 5cm H

* One box, no changes, one invoice paid up front.

G.M. Ellison & Co. lawyers • conveyancers

Graham Ellison LL.B.

- Real Estate & Business Conveyancing
- Wills, Probate and Personal Arrangements

5 HOST PLACE BERRY

Ph: 0408 444 808

graham@gmellisonlawyers.com.au



PCA
ANTHONY LEWIS
BDC 0228

PCA
JARED NEVILL
BDC 2523

02 4421 0004 info@aiscertifiers.com.au



gerringong & kiamo
physiotherapy



southern coast pelvic health
physiotherapy and pilates

Physiotherapy | Pelvic health | Pilates | Massage

4234 4666

Book online: gerringongphysio.com



wholebody
PHYSIOTHERAPY

...dedicated to your wellbeing

Nikki Hilton

Mary Pentecost

84 Queen Street Berry NSW 2535
email: wbpqueen84@hotmail.com

4464 2874



- Solar quote, design, install, repair and maintenance
- Mains electrical connection
- Underground sub mains to building or structure
- Oven, cooktop and rangehood repair or installation
- Meter box upgrade with safety switched or three phase supply

- New house wire or remodeling
- Hot water install
- Outdoor lighting
- Fan install
- All your electrical needs

GREG KELLY
LOCAL ELECTRICIAN

0487 093 173

Licence Number 270316C



0410331284

www.homesteadbuildingprojects.com.au

- New Builds
- Extensions
- Pergolas

- Renovations
- Decks
- Maintenance

Builders Licence: 451585C



- ✓ Gutter Guard
- ✓ Ember Guard
- ✓ Gutter Cleaning
- ✓ Solar Panel Guard
- ✓ Solar Panel Cleaning

GUTTERKNIGHT

keith.m@gutterknight.com.au

0481 745 958

Vaughn's Lawn & Garden Service



- ✓ Local knowledge
- ✓ Professional service
- ✓ Fully insured

0408 863 776

www.vaughnsgardening.com.au

PLUMBER DRAINER GASFITTER MINI EXCAVATION

Marland Plumbing Services



Licence No. 72832C
ABN 43 571 877 557

Over 25 Years Experience in the Shoalhaven

Phone: 4480 2251 Mobile: 0412 044 135
marlandplumbing@iinet.net.au

SUPPORT
LOCAL
BUSINESSES



Step into our vibrant salon where the magic of transformation awaits at 108 Queen Street Berry!

- Hair Cuts - Ladies & Mens
- Colours - Tints, Foils, Balayage
- Wash, Blow Dry and Styling
- Treatments - Keratin, K18, Hair Masks
- Makeup Services
- Retail Hair Care & Styling Products
- Champagne & Cocktails
- Wedding Hair & Makeup Specialists

HAIR +
MAKEUP +
COCKTAILS

www.blowbaronqueen.com
E: hello@blowbaronqueen.com

02 4464 2618
@blowbaronqueen



Wilson Hirst
BUILDING

YOUR LOCAL BUILDER

NEW HOMES • EXTENSIONS • RENOVATIONS

02 4421 8677 M: 0449 668 439

E: wilsonhirst@hotmail.com



UNIQUE
INNOVATIONS
GLASS & FABRICATION

0422 260 235

Specialising in glass & aluminium designs:

Pool fencing Shower screens
Balustrades Gates Privacy screens

unique.innovations.sthcoast



TRADES & SERVICES DIRECTORY



BERRY REMOVALS

Moving made easy from Berry NSW - Australia wide with Care & Heart

0428 643 557

Experience a new level of professionalism.

GRADE EX

ROAD GRADING + GRAVEL SUPPLIER

- Rural, private and farm roads
- Local Contractor
- Fully Insured

CONTACT JOHN
0408 160 428
john.52.smith@icloud.com



OneStopHomes

YOUR LOCAL BUILDER

NEW HOMES | EXTENSIONS | RENOVATIONS

02 4421 8677 M: 0449 668 439

www.onestophomes.com.au

Life is better in a One Stop Home

John Hawkins Concretor

We aim for a professional finish and work with the customer to obtain the job they desire.

Specialising in:

- Stamped
- Stencil
- Colour Cove
- Black Basalt
- Machine Finish
- Stained

P: 0401 236 850

FULLY LICENSED & INSURED • QUALITY FIRST • LIC NO: 169901c

Call Curran, Call Local!

1300 792 082

Established in Berry since 1996

Curran is your local expert for plumbing, electrical services, hot water systems, and air conditioning!

Curran

PLUMBING • ELECTRICAL
HEATING & AIR®

www.callcurran.com.au



Pines Concrete & Landscape

Ben McCarthy Warri Beach

Mob: 0438 703 109

For all your concreting & Landscaping projects
Call or text Ben on 0438 703 109

Our Legged Friends Pet Feeding Service

FOR ALL DOMESTIC PETS AND FARM ANIMALS

- FEEDING • EXERCISING • RUGGING
- GARDEN / MAIL / GARBAGE

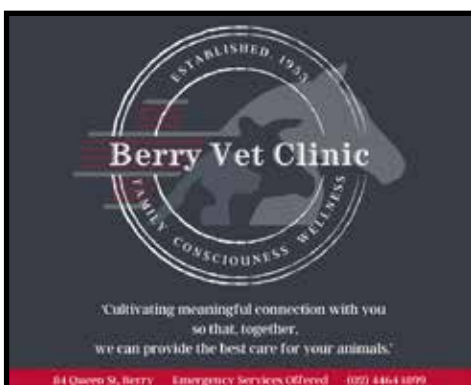
Megan 0407 407 328
Dip in Animal Care
ESTABLISHED 1995

Original, local and experienced.

SAM GALLAGHER CARPENTRY

All Jobs Carpentry
Decks, Pergolas, Maintenance, Renovations, Additions, Kitchen & Bathroom Reno's

Free Quotes 0434392017 LIC NO: 317866C



Berry Vet Clinic

ESTABLISHED 1935

Cultivating meaningful connection with you so that, together, we can provide the best care for your animals.

84 Queen St, Berry Emergency Services Offered (02) 4464 1079

SHOAL PLUMBING

0411 476 780

All your plumbing, drainage, gas, roofing and emergency plumbing.

CHRISTOPHER BRAMLEY
LIC NO. 235127C



CountryLiving ELECTRICAL

0491 033 247

Licence No: 253095C ABN: 70 845 107 241
Email: admin@countrylivingelectrical.com.au

neca MEMBER
Kangaroo Valley / Berry + Surrounds

Residential Commercial 25+ Years Experience Fully Insured



JET LOCKSMITHS & SECURITY

Automotive Residential Commercial Industrial

MOBILE 24/7 LOCKSMITH SERVICE
0498 770 088
www.jetlocksmiths.com.au

Master Locksmith | Security Lic #000101098

MECHANICS TO YOU!



MOBILE SERVICE & REPAIRS

LAWNMOWERS | TRACTORS | TRUCKS | FARM EQUIPMENT

CALL 0414 800 359



MOTATEC

EXPERIENCE - EXCELLENCE

AUTOMOTIVE SERVICE CENTRE

SERVICING | REPAIRS | PINK & BLUE SLIPS
FOR ALL MAKES & MODELS

EUROPEAN SPECIALISTS
COURTESY CAR AVAILABLE

96 NORTH ST, NOWRA
CALL 4424 0803

McGoldrick

E S T A T E A G E N T S

Showcasing the South Coast's finest properties

Residential ♦ Rural ♦ Lifestyle



(02) 4464 1600

hello@mcgoldrick.com.au

Scan QR code to view our properties

121 Queen St,
Berry NSW 2535