




BERRY TOWN CRIER

PO BOX 202 BERRY NSW 2535

WWW.BERRYALLIANCE.ORG.AU

 FIND US ON FACEBOOK

NOVEMBER 2021 PRICE: \$3.00



**ZONTA
CONTINUES
FUNDRAISING
FOR WORTHY
CAUSES LOCALLY
AND FURTHER
AFIELD**

Page 23

THE INCREDIBLE ECHIDNA

Page 13

**TIPS FOR STARTING YOUR
BUSHFIRE SURVIVAL PLAN**

Page 2

**A NEW COUNSELLING SERVICE IN
BERRY**

Page 15

PINK UP BERRY

Page 5

**WHAT'S
REOPENING
LOCALLY**

Page 3

**UPDATES FROM
BERRY MEDICAL
CENTRE,
HERITAGE ON
PULMAN AND THE
BERRY PHARMACY**

Pages 12, 10 & 14

BERRY ALLIANCE INFORMATION



The Town Crier is produced by the Berry Alliance Inc.

The purpose of the publication is to communicate to the people of Berry about community activities and aims to share information amongst community groups, individuals and the community. A community that is well informed with a range of different opinions makes better decisions and that makes for an even better community that we can continue to be proud of.

Contributions are from the Berry Community who have news and information for our readers.

The opinions expressed in the Town Crier are not necessarily those of the Berry Alliance or of the Editors.

MEMBERSHIP

Membership of the Berry Alliance costs \$15 per annum and is open to Berry community groups registered with the Berry Alliance as well as individuals. To join please write to Berry Alliance, PO Box 202 Berry NSW 2535 or email: info@berryalliance.org.au

Editor's Note



The closing date for our DECEMBER issue will be Wednesday 17th NOVEMBER 2021 at 5pm. Please submit prior to this date if it is your first submission. Material can be submitted via e-mail to:

towncrier@berryalliance.org.au

Phone 0428 037 572

Town Criers can be downloaded for free from www.berryalliance.org.au or our Facebook Page: Berry Town Crier.

Nancy Davies - Berry Town Crier

THE TOWN CRIER IS PUBLISHED MONTHLY, WITH A CIRCULATION OF 2,400 COPIES AS WELL AS ELECTRONICALLY BY EMAIL OR ON OUR WEB SITE

PRINTED BY **Berry Printers**

CONCORDE WAY BOMADERRY PH: 4422 3774

PRINTED ON RECYCLED PAPER



BROUGHTON VALE / BERRY RURAL FIRE BRIGADE







The good news this month is the easing of the Covid 19 restrictions for New South Wales. This has meant that the Broughton Vale / Berry Rural Fire Brigade can restore some normality to its services to the community.

In particular, regular training of the members has recommenced albeit with a restriction on the numbers present at each training session. These training sessions are an important part of the preparations of the brigade for the coming fire season.

As advised in last month's Berry Town Crier we are now in the Bush Fire Danger Period which commenced on 1st September 2021. The Rural Fire Service has produced a **GET READY FOR A BUSH FIRE** kit which sets out the four

simple steps to making a bush fire survival plan. The steps set out and fully explained in the kit are: -

-  **1. DISCUSS** what to do if a bushfire threatens your home.
-  **2. PREPARE** your home and get it ready for the bush fire season.
-  **3. KNOW** the bushfire alert levels.
-  **4. KEEP** all the bush fire information numbers, websites and the smart phone app.

The Broughton / Vale Berry RFS has the **GET READY FOR A BUSH FIRE** kits available for distribution and asks affected members of the community to email the brigade at broughtonvalefb@gmail.com to obtain a copy.

Delivery of the kit will be by an RFS volunteer who at that time may be able to answer questions relating to, for example, storage tank fittings and emergency pumps.



IT IS STILL IMPORTANT TO REMEMBER:

- Fire Permits are now required for burning activities in rural fire districts.
- It is your responsibility to check if a total fire ban is in place before you start burning.
- Heavy penalties apply for the use of fire when there is a total fire ban.



SOUTH COAST LIFE CHURCH

Bringing **Life through Jesus** to the South Coast and beyond
Formerly known as Berry Community Church

8 Schofields Lane Berry
Service times 9am. 10.30am & 5pm
Everyone is Welcome!

hello@southcoastlife.org 4464 2315
southcoastlife.org

ROADMAP FOR EASING COVID-19 RESTRICTIONS

Editorial: With things changing so quickly (roadmaps, regulations, lockdowns, Premiers) at the time that the Town Crier was closing this was the latest information from the NSW Government.

We have included the direct links for each topic so you can obtain current Government provided details (a bit better than the opinions or answers to questions given on social media by the person who has a strong view about vaccinations being bad for you or that they provide better 5G reception).

Dr Do from Berry Medical Centre has a great read in this edition and he too, is in danger of being a little overtaken by events by the time you receive your copy of the Berry Town Crier. We have received a lot of very good feedback about Dr D's articles we would like to thank him publicly for all that he and his staff along with all the front line people in this fight against the Covid Pandemic. Our mid-Month Friends of the Berry Town Crier Newsletter and our news Facebook site <https://www.facebook.com/BerryTownCrier> have also received similar feedback, a source of good information and informed opinion.

Rick Gainford for the Management Committee of the Berry Alliance and Berry Town Crier



Reopening starts at 70% fully vaccinated

NSW will start to reopen once we reach the 70% double vaccination target. Find out about the freedoms for fully vaccinated people. [Click here for more information.](https://www.nsw.gov.au/covid-19/easing-covid-19-restrictions/70-percent) <https://www.nsw.gov.au/covid-19/easing-covid-19-restrictions/70-percent>

Further reopening at 80% fully vaccinated

When we get to 80% double vaccination, restrictions will ease further, particularly for those who are fully vaccinated. [Click here for more information.](https://www.nsw.gov.au/covid-19/easing-covid-19-restrictions/80-percent) <https://www.nsw.gov.au/covid-19/easing-covid-19-restrictions/80-percent>

Fully reopened from 1 December 2021

Restrictions are expected to ease in December with most venues moving to the 2sqm rule and those people not fully vaccinated having greater freedoms. [Click here for more information.](https://www.nsw.gov.au/covid-19/easing-covid-19-restrictions/opening-in-dec) <https://www.nsw.gov.au/covid-19/easing-covid-19-restrictions/opening-in-dec>

PREPARING YOUR BUSINESS FOR REOPENING

Update your COVID-19 Safety Plan

Ensure you fulfil your obligations under public health orders to minimise risk of transmission of COVID-19 on the premises. [Click here for more information.](https://www.nsw.gov.au/covid-19/business/safety-plans) <https://www.nsw.gov.au/covid-19/business/safety-plans>

Customer proof of vaccination

Guidance for businesses on options for customers to show proof of vaccination. [Click here for more information.](https://www.nsw.gov.au/covid-19/business/covid-safe-business/proof-of-covid-19-vaccination) <https://www.nsw.gov.au/covid-19/business/covid-safe-business/proof-of-covid-19-vaccination>

Guidance about business rights

Find out about welcoming back customers in a COVID safe way and new compliance obligations. [Click here for more information.](https://www.nsw.gov.au/covid-19/business/covid-safe-business/vaccination-compliance-for-businesses) <https://www.nsw.gov.au/covid-19/business/covid-safe-business/vaccination-compliance-for-businesses>

What to do if your business becomes an exposure site

What you need to know about updated advice for testing, isolating and contact tracing. [Click here for more information.](https://www.nsw.gov.au/covid-19/business/covid-safe-business/contact-tracing-and-isolation-rules-for-businesses) <https://www.nsw.gov.au/covid-19/business/covid-safe-business/contact-tracing-and-isolation-rules-for-businesses>

Vaccination of staff and customers

Key considerations for businesses around vaccination of staff and customers. [Click here for more information.](https://www.nsw.gov.au/covid-19/business/covid-safe-business/contact-tracing-and-isolation-rules-for-businesses) <https://www.nsw.gov.au/covid-19/business/covid-safe-business/contact-tracing-and-isolation-rules-for-businesses>



Why consider an ethical investment approach?

CHOICE—You can align your investments with your values, i.e. environment and/or social issues and make your money work according to your preferences.

IN-DEPTH RISK ANALYSIS—Financial risks, as well as environmental, social and governance (ESG) risks are evaluated, giving you more layers of risk analysis in your investments.

PERFORMANCE—Ethical investment products have performed consistently well in these turbulent times, and independent research shows they outperform against industry benchmarks over short and long term time frames (RIAA 2021).

Perhaps the question should be: Why WOULDN'T you invest ethically?



Tim Donlea CFP
0412 636 237
td@artemaswealth.com
www.artemaswealth.com



Artemas Wealth Management Pty Limited ABN 66 003 798 141 AFSL 527932. This information is of a general nature only and has been prepared without taking into account your particular financial needs, circumstances and objectives. Past performance is no guarantee of future returns. While every effort has been made to ensure the accuracy of the information that we have provided, it is not guaranteed. You should obtain professional advice before acting on the information contained on our website.



Meals on Wheels

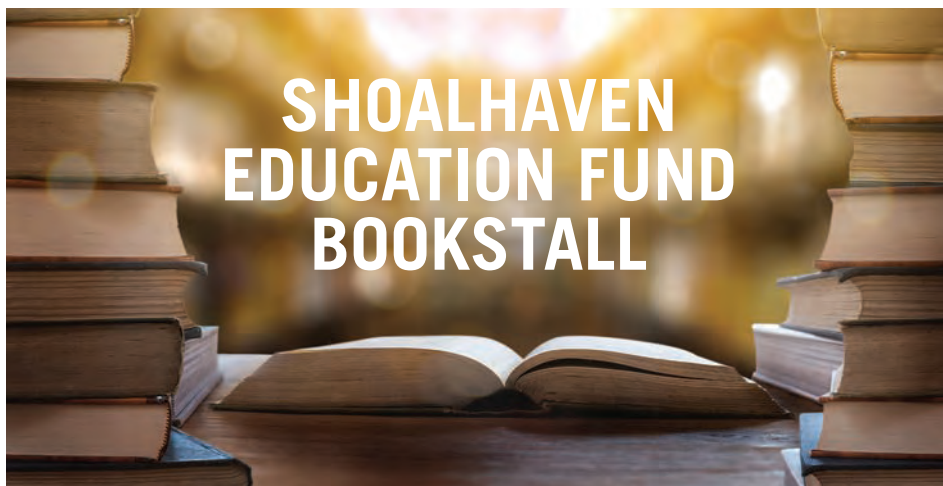
Berry

Isn't Berry a wonderful place to live? It's quaint and charming, but the real reason why we love it, is that it is supported by such a dedicated community. When needed we all pull together to support each other.

Berry Meals on Wheels is a valuable resource for our community. Yes, there are a lot of other food delivery options, but with Meals on Wheels you have locals caring for locals. We'll talk to you about allergies, food preferences and nutrition priorities when helping you choose your meals (and yes, the committee has fun taste testing!). We'll bring your frozen soups, meals and desserts to your door, and even wearing masks I'm sure you'll see our eyes twinkling at you as we chat. And if your needs change, we'll respond quickly.

It's all about community, and we're here to help.

**FOR MORE INFORMATION CALL
0490 420 459 OR
EMAIL: MEALS2535@GMAIL.COM**



THE SHOALHAVEN EDUCATION FUND WILL HOLD ITS ANNUAL SECOND-HAND BOOKSTALL FROM FRIDAY 3RD – SUNDAY 5TH DECEMBER AT THE CWA HALL IN VICTORIA STREET BERRY

All proceeds will go directly to grants to help Shoalhaven young people with their costs of post-school studies (University, TAFE, vocational studies, apprenticeships and entry level employment). There will be a range of fiction, non-fiction, children's & young adult books, so bring a bag and fill it with summer reading. All books 50c - \$5. We are still accepting donations of books (fiction only, in good condition), which can be dropped off at the Berry Post Office.

Applications are also now open for 2022 SEF grants. Applicants must be aged 16 – 26, live or have gone to school in the Shoalhaven, and able to demonstrate a genuine financial need. Applications close on 31 December 2021 and can be made online at www.cef.org.au/shoalhaven

Finally, the SEF relies on our volunteer committee, and we're in real need of some more hands on deck, including someone with fundraising experience, and some general committee members. Time commitment is as little as a few hours a month. If you're interested in joining and would like more information, please email Sophie Ray at Chair@sef.org.au. Since 2012, our volunteers have raised over \$300,000 which has assisted over 200 local young people, so volunteering on the committee is a great way to make a contribution to the future of our community.



Meals on Wheels

Berry



Meals on Wheels is not income tested, has no waiting list, and there are no contracts!

TALK TO US ABOUT MEALS FOR YOURSELF OR A LOVED ONE

Most people aim to age in the comfort and familiarity of their own home. Berry Meals on Wheels assists you to do so by providing a wide selection of tasty meals at an affordable price.

To talk to Berry Meals on Wheels about your needs call **0490 420 459** or email **meals2535@gmail.com**.

PINK UP BERRY

TOGETHER WE CAN MAKE A DIFFERENCE!



In a time of so much uncertainty it is fantastic to see the town turned pink and bringing so much happiness to our community. Thank you to everyone who has made an effort to decorate their business and homes and also a huge thank you to our group of volunteers and committee members who wrapped the town in Pink.

Everyone that bought bunting to display went into a draw with prizes kindly donated from Berihurikari - Goldfish Toys- Sunday Minx-winners' names will be in next month's Town Crier.

Our major raffle has started, and tickets can be purchased on a Saturday morning outside IGA- Berry Bowling Club- Farmers markets- or by email or phone.

1st Prize-2 nights' accommodation in a Deluxe King Room for 2 @ Homestead Berry includes-Continental Breakfast- free mini bar-cheese @ Wine platter on arrival - Massage in their salon- valued at \$1050

Thank you, Homestead Berry, for this very generous prize.

2nd Prize -Beautiful Handmade Quilt -Kindly donated by Berry local Shirley Blenkinsopp - valued at \$700 - Thank you Shirley

3rd Prize - Berry IGA \$500 voucher -Thank you to Lee

Tickets are \$2 each or 3 for \$5 - Drawn Saturday November 13th @ the Berry Bowling Club.

Berry Farmers' market are kindly allowing us to sell Raffle tickets and sell some of our homemade goods that have been kindly donated- They have also donated 2 x\$100 Farmers' Market vouchers that we will also be raffling.

The Berry Barnlet has now reopened and our pop up Pink area is well stocked with lots of homemade goodies- Thank you to Sandy Bramley for giving us this space to use- it is greatly appreciated

Plant sale will be held in the car park at Berry Bowling Club on Sunday 7th November @ 8am - come and grab a bargain - thank you to all that have been potting plants over the past few months for us to sell.

Claringbolds Fine Jewellery - 113 Queen Street will be selling on our behalf a selection of good quality costume Jewellery that was kindly gifted to Pink Up Berry- call in and have a look - would make good Christmas presents.

Shoalhaven City Turf Club had plans of supporting us at their October race meeting but due to the lockdown this was impossible to organise but they did make a generous donation of \$500 to Pink up Berry-We are very excited to announce that they will be supporting Pink Up Berry at their Easter Sunday race meeting next year!

Kerry & Van Carter of Hedgehogs Cafe are once again doing their famous Pink Devonshire Teas and donating \$2 from every one sold - Thank you Hedgehogs!

Each time I go around town there is more pink - from the Brooks Ducks to the Ambulance station Pink lights- Homes-Preschools-Tindalls Lane who put out a challenge to their neighbours & pinked up the entire Lane - We thank you all for your support.

I am very proud to be committee chair of such a dedicated Committee who are: Sandy Bramley, Kerry Carter, Pauline Windley-Karen Brooks, Jo Shields, Taleen Smith and our large group of volunteers and I thank everyone that supports Pink up Berry in so many ways!

All money raised by Pink up Berry is donated to the McGrath Foundation who provide specialised Breast Care nurses who support those experiencing Breast Cancer- Free of charge all over Australia.

You are all helping make a difference!

Any enquires drop us an email -pinkupberry@gmail.com.

**Phone Deb
0428 005 910**



PROUDLY SPONSORED BY THE BERRY ALLIANCE AND BERRY TOWN CRIER

SUPREME MASTER TV
Constructive Programming for a Peaceful World

SupremeMasterTV.com

Broadcasting **Wonderful News** and **Positive, Encouraging Programs** 24 Hours a Day

Sharing Messages of Love and Peace That Create Positive Energy for a Better, Shining World

BERRY PODIATRY CLINIC

- General Foot and Nail Care
- Corns and Callus
- Ingrown Toenails
- Foot, Ankle or Leg Pain
- Sports Injuries and Rehabilitation
- Walking/Running Problems
- Prescription Orthotics
- Diabetic Foot Checks

Home visit service also available.

(02) 42323513

Cnr Princess and Alexandra St, BERRY
Open Tuesday and Thursday



Grand Christmas Street Parade

Saturday 4 December

Let's Celebrate!

Berry's Grand Christmas Street Parade is back!
Come, help make it the biggest we have ever seen.
It starts at 3pm.

Registration for parade participants is still open.

If you want your sports, dance, music, other group or business in the parade,
you need to register now.

Contact Rotarians: Jenny Delahunty ph: 0438 540 815
or Haseena Tweddle at The Berry Music Centre ph: 0409 318 171

CELEBRATION FESTIVITIES FOLLOWING THE PARADE

Follow the Parade down to the Berry Showground (where the Farmers Markets are held)

- * Santa Photos (gold coin donation)**
- * Sausage sizzle, fairy floss, coffee, drinks and more**
- * Jumping castle and entertainment**

'COVID RESTRICTIONS THAT ARE CURRENT AT THE TIME APPLY'

This is another community event by the Rotary Club of Berry,
fundraising to buy an ambulance for the Village of Jyamrung of Nepal.
HELP US GIVE THE VILLAGE AN AMBULANCE FOR CHRISTMAS

Help make a difference - support ROTARY



BERRY PRE SCHOOL

Welcome back to all of the children and families, we look forward to a fun term full of learning and consolidating for school readiness. Hopefully we can soon have Preschool Orientation for our new enrollments that are enrolled for next year so that we can give them a tour of our wonderful Preschool.

The preschool will soon be decorating and celebrating raising funds for "Pink Up Berry". The children are looking forward to turning the preschool pink for the cause!

Berry Preschool Families wishing health and happiness to our beautiful community for the remainder of the year.



....More than just a print shop

We have all of your garment printing needs covered

EMBROIDERY – DIGITAL PRINTING – HEAT VINYL

Retail shop open for extended hours over summer

Shop in-store or online



Located next to the petrol station Shop 4/142 Fern Street Gerringong

www.onprinttshirtcompany.com.au

Phone: 0493 082 198

Plan for now and for later

We're here to help you get to where you want to be.

Specialising in:

- Retirement Planning
- Aged Care Advice
- Superannuation
- Self-Managed Superannuation
- Investment & Wealth Creation
- Succession & Estate Planning
- Centrelink Entitlements
- Personal Insurance
- Redundancy Planning

Contact us today to book your complimentary initial consultation



Dream, Plan, Achieve

Call 02 4232 4402
www.middletonfp.com.au

Kiama
17 Bong Bong St

Nowra
Suite 12, Holt
Centre,
31 Kinghorne St

Middleton Financial Planning is a Corporate Authorised Representative of Clearview Financial Advice Pty Ltd AFS Licence No. 331367

The Berry Forum

www.berryforum.org.au

AGM & Meet Council Candidates – 11 November 7pm at the School of Arts

- The AGM will be asked to consider nominations for the 2021/22 Committee. If you wish to nominate, please email berryforum@hotmail.com before Sunday 31 October with your details.
- Mayoral and Ward 1 candidates will speak and answer questions from the community prior to the elections on 4 December.

Protecting Berry's Historic Character

A group of concerned Berry residents make the following appeal for your support:

To: The Berry Community

In 2017, Council identified community concerns that unsympathetic development was eroding the unique heritage character of Berry. That erosion has accelerated recently with growth in demolitions, dual occupancy and other 'complying developments', many of which did not consider retention of heritage character.

Berry Community Strategic Plan (endorsed by Council in 2016)

- *Berry is highly valued by both its residents and its visitors for its location and its heritage village atmosphere. Future development and growth of tourism will be carefully balanced with a heightened focus on Berry's unique historic charm and rural character.*
- *Ensure that the town's planning controls and any proposed CBD developments retain existing character buildings and reflect the heritage appeal.*

Shoalhaven 2040 Strategic Land-use Planning Statement (September 2020)

In-fill development, such as dual occupancy, is how villages like Berry will support housing supply. In areas with valued historic character and relationships with the landscape, village communities expressed a strong desire to be protected from overdevelopment.

Council Involvement

Shoalhaven 2040 Immediate Action 3.1 – 'Update the SDCP with built-form statements to ensure in-fill developments contribute to neighbourhood character' is yet to be implemented.

After four years work, Council obtained approval for two additional Heritage Conservation Areas and 12 dwellings for heritage listing. However, there is now an urgent need for more extensive action to prevent further loss of Berry's unique character.

What Action Can be Taken?

Concerned residents have formed an incorporated association **'Defend Berry Heritage Community Association' (DBH)** to establish a broad community group to gather input and work with Council on expediting implementation of critical planning controls.

DBH intends to work closely with other community groups who are concerned with heritage character issues, and has sought assistance from the Forum Committee on community communication and liaison with Council.

Aim of DBH

To maintain the unique character, history and setting of the Berry area through careful planning and development. This includes protecting amenity, and social and cultural values.

What Can You Do?

- Support this community initiative by joining DBH and responding to requests for your views.
- Consider becoming actively involved in developing DBH strategy and plans.

Email the DBH Secretary (email address below) to request a membership form.

Thank you for your support,

The BDH Committee

defendberryheritage@outlook.com

BERRYFORUM.ORG.AU

NOMINATIONS OPEN FOR ARTISTS AWARDS

12 October 2021

Shoalhaven City Council is encouraging residents to nominate a local artist for one of two awards in their annual Shoalhaven Australia Day Awards.

Shoalhaven City Council Mayor Amanda Findley explained the two categories Outstanding Emerging Artists and Outstanding Contribution to Arts and Culture offer an opportunity to recognise some of the creatives in our community.

"From visual artists to digital artists, writers to performers, these award categories aim to give the most creative souls in our community a boost of confidence," Cllr Findley said.

"The Outstanding Emerging Artist is open to all ages and includes artists of all types while the Outstanding Contribution to Arts and Culture category is open to both artists and non-artists in our community.

"I know art has played an important role for many in our community particularly in times of healing after the black summer bushfires or to bring some joy during COVID lockdown and I encourage anyone who has admired an artist from afar to nominate them today.

Visit Council's website today to nominate <https://getinvolved.shoalhaven.nsw.gov.au/australia-day-awards-2022today>. Nominations close on Friday 26 November 2021.



Berry Automotive Repairs

PH: 4464 3999 MB: 0417 251 205
2C Old Creamery Lane, Berry



Our Services Include:

Rego Inspections, Log Book Compliant New Car Servicing,
Steering and Suspension Repairs, Brake and Clutch
Repairs, Diagnostic Scanning

"When quality & service count, give us a call"



HERITAGE MEDICAL

COTTAGE MEDICAL ON PULMAN

VACCINATION MESSAGE

Our practice at Berry, as well as many other excellent GP practices in our region, are doing a fantastic job of rolling out vaccinations, and the other important quality of your GP is they are an expert on everything Covid related – the appropriate delivery of vaccination, risks, benefits, and other tricky questions.

We are hoping those of you who have been waiting and are not yet decided about vaccination will read this and be encouraged to talk to your GP.

We know it's been a very confusing time but there is now no doubt that in the Australian setting we can see the benefit of vaccination to modify the Covid infection and prevent severe illness. Dr Donovan has already written about the benefits of vaccination, and we fully support all his information.

However, we really encourage anyone who has been putting off having a "jab" or is still anxious about it to speak to their own GP.

The reason we wanted to encourage those who are still hesitant is we are entering a different phase of the Covid pandemic where communities have started to "open up" due to high vaccination rates. Berry area is going well but the Shoalhaven

overall is not as well covered, and we cannot live as an island! Our great concern is that although vaccinated people are less likely to pass on the virus, there is still a chance they can. If you are that person who is unvaccinated and especially if you have any chronic diseases, then your risk of severe illness is very high.

No-one will be expecting to pass on the Covid infection, but they may have few if any symptoms and hence could do so without realising.

All the GPs in our region are committed to getting the community fully vaccinated and welcome any questions. Many people are safe to have Astra Zeneca especially those 60 and over. This vaccine is available quickly through most GP practices or even Pharmacies. Anyone under 60 can get a Pfizer jab but the demand is still high, so the best advice is to book in for this, even if you want to discuss it further before you make a final decision.

This is the time to protect yourself and all your loved ones.

Let's continue to encourage all our friends and family to be ready to safely welcome visitors to our beautiful region.



DR VICKI McCARTNEY

FACRRM, MBBS, DCH, Dip Paeds
Director, Heritage Medical

www.heritagemedical.com.au

Book Online or Call 4422 1210



PLANT PROPAGATION NURSERY

Growing Plants Growing Community



Some local climbing plants for gardens or hanging baskets

Hardenbergia violacea (False sarsa-pirilla), ***Hibbertia scandens*** (Snake vine) and ***Kennedia rubicunda*** (Dusky coral pea) are climbing ground covers. The stems climb, scramble or twist allowing the leaves to have maximum exposure to sunlight.

These 3 plants are flowering now and often grow naturally on the verges of roads or in the bush in very harsh conditions.

Hibbertia is a scrambling groundcover vine with stems up to 3 metres long. Flowers are buttercup yellow and are pollinated by solitary native bees such as the fuzzy orange Teddy Bear Bee. The fruit provide food for birds.

The leaves provide food and habitat for the larvae of the Impatiens Hawk Moth.

Dusky Coral Pea is a twining groundcover vine which provides excellent shelter and habitat for small lizards and insects.

The seeds are eaten by a number of birds.

Purple Coral Pea. The leaves provide a food source for Swamp Wallabies.

Plants provide refuge, nesting sites and food for native birds, particularly nectar loving birds.

Bees, moths and butterflies such as the Painted Acacia moth and Common Grass-blue butterfly find this plant attractive.

There are other climbing plants that may be less well known because of the diminutive size of the flowers, they also prefer some shade.

Geitonoplesium cymosum (Scrambling lily) and ***Clematis aristata*** (Old man's beard).

Scrambling lily climbs over other plants and has small bell shaped flowers. The leaves have an attractive delicate appearance which defies the toughness of the plant.

Old man's beard is capable of climbing to great heights. The white flowers can be seen from a great distance in the canopy of trees on the escarpment. Although it is a vigorous climber, the stems drape over branches and don't strangle the host plant.

Additional details and photos can be found at

www.growingillawarranatives.org

For information about plants and sales, email lyn-clark@outlook.com.au or leave a phone message on 4464 3911.



Hardenbergia violacea
False sarsaparilla



Hibbertia scandens
Snake vine



Kennedia rubicunda
Dusky coral pea

PLANT SALES AND OTHER ENQUIRIES PLEASE EMAIL LYN-CLARK@OUTLOOK.CO.AU



ALBION PARK

☎ 0427 154 846 ☎ (02) 4257 4602

Landscaping Supplies

✉ sales@aplsptyltd.com.au

📍 30 Terry Street, Albion Park

WE DELIVER TO YOU!

Open 7 Days

SOILCO PRODUCTS AVAILABLE HERE

**CEMENT PRODUCTS
AGGREGATES
SANDS
MULCHES
PEBBLES
FIREWOOD
TURF**

- > Delivering to Berry and surrounding areas
- > Catering to all residential and commercial needs, from bagged products to 30+ tonne loads

COVID UPDATE

Dear Friends, it seems we are at a critical time in our COVID journey. We could really shrug off the heavy coat of COVID or be brought to our knees by the weight of new cases overwhelming the hospitals. We are at crossroads and it feels that we are getting conflicting messages.

As a doctor: illness is the enemy. Stop the spread! Bend the curve! Save lives! Whatever it takes!

As a General Practitioner: Health is our goal. It's not being alive, not just the absence of disease but mental, spiritual and psychological wellbeing, as well.

So far, as a group, we have accepted some hefty dents to our health because COVID is so lethal. So let's take stock: we have sacrificed seeing family, holding the hands of our dying and elderly in aged care facilities, sending our kids to school, eating out, going to church, gyms, movies and a whole lot more. Take a vaccine that works but is not perfect; it has risks and side effects (nearly everyone gets a headache or a sore arm). These were the costs, for the greater good because that's what we needed to do to protect each other. We have had to trust medical experts and accept some pretty hefty impositions of our personal freedoms and learn to live with masks and not shake hands. So as a General Practitioner, in some ways it has been the singular pursuit to stay safe, when we generally advocate whole patient

care (holistic medicine) and nothing is singular about that.

I am sure you might be wondering: did we listen to the epidemiologist and public health experts too much? Are they "blinker" or just "focused"? Have we handed over too much of our autonomy?

My opinion, is absolutely NOT. Just watch a young person in ICU being nursed on their stomachs for weeks on end (COVID patients need beds for weeks not just days). The daily death statistics become real, and you realise just how much suffering we could have seen. Just because we have not looked directly into the face of our enemy, it may not feel real, but it is.

So now is the time for a nuanced debate of percentage vaccinated, risk of transmission and risk of the health system being overwhelmed.

This is a real time experiment, and it could go very wrong.

There is also cause for optimism, because like the warmer weather, normal life is returning. And we can appreciate our well-earned freedoms more. Freedoms that were not taken away, but we traded for safety. That's how I see it, I am willing to trust the vaccine makers, the public health experts a little longer to get us across the line. So I am hoping you agree and get your final shot, abide by the rules, wear masks and be cautious about indoor groups.

Just in case it has not been clear, the vaccine is not full proof, so you can get infected with COVID and you can still pass it on. There are still

unvaccinated/vulnerable people in the community. Hence the need for ongoing vigilance.

It just means, that for most of us, we don't have to worry so much, personally about getting really sick, but the system being overwhelmed. The fancy name for this is "uncoupling" and it means that whilst infections go up, deaths and ICU stays, will go up much less. Simply because so many people have chosen the greater good and got vaccinated ... and thank you. (Well over 95% in Berry).

We are not yet ready to start vaccinating children,

All our staff are double vaccinated, and we will continue to wear masks and ask patients to wear masks.

Some patients will need a 3rd dose of the vaccine, such as patient who have had transplants.

Booster shots will start soon for those who are 6 months post their second dose.

At Berry Medical Centre, we are gearing up to manage COVID positive patients in the community and work with the hospital in supporting sick patients at home. There are some antivirals in pipeline, and this will be on script and just a tablet! New ideas and inventions.

As they say, never waste a good pandemic.

Cheers
Dr Neil Donovan on behalf of
Berry Medical Centre



Appointments can be made online through our website
www.berrymedicalcentre.com.au or by using the HotDoc App





Incredible and in-residence

The ambling gait of an echidna crossing a backyard is a likely sight for many TC readers. Despite the familiarity, this Aussie survivor is worth a double-take. You will not find a more incredible resident.

Echidnas live in all Australia's terrestrial habitats - snowy highlands to central deserts - and are one of only two surviving monotremes on the continent. The other is the platypus, limited to the fresh waters of Eastern Australia. Both lay eggs and suckle their young ('puggles') and represent the longest surviving lineage of mammals which branched from the ancestors of marsupials and placentals perhaps 180 million years ago.

As ancient mammals, echidnas retain some reptilian features, such as egg laying and their sprawling gait (legs to the side, rather than underneath the body). Should we mention the male's four headed penis? Females have a temporary infolding of skin, an early form of their marsupial cousins' pouch, and like all mammals have hair, provide their young milk (from abdomen milk patches), and regulate their body temperature (at the lowest of all mammals, around 31 to 33°C).

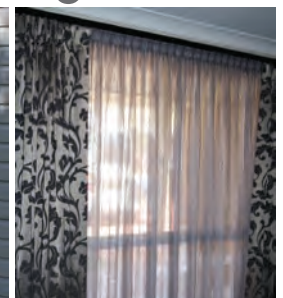
Their secretive lifestyle and diet of ants, termites and grubs makes them a hard target of scientific study. Their biology was almost completely unknown 30 years ago.

We know now that they lay eggs directly into their 'pseudo-pouch', they hatch 10 days afterwards, and remain for up to 55 days until developing spines prompt their mother to dig a nursery burrow, where they remain to suckle for seven months.

Little is known of their population trends and researchers fear they may be in decline due to habitat loss, feral predation, and car impact. We can all assist by compiling data for research by using the Echidna CSI app and logging sightings and recording scats. Visit <https://grutznerlab.weebly.com/echidna-csi.html> for more information.



blinds | curtains | shutters | awnings



4237 8280 www.bombo.com.au

Visit our beautiful showroom at **7 Johnson Street, Kiama Downs** (near the IGA)

WE CARRY THE FABULOUS "BLINDS BY PETER MEYER" RANGE • ALL PRODUCTS COMPLY TO CORD SAFETY LAWS

THE BERRY PHARMACY

FEELING RE-ENTRY ANXIETY?



While many people are looking forward to the lockdown period ending, it can also raise anxiety levels and cause worry for some. Adjusting to the 'new normal' will take time, and it's important to remember that it's OK to feel apprehensive.

TOP TIPS TO HELP YOU DURING THIS TIME OF ADJUSTMENT

- **TAKE YOUR TIME:** *Just because things have opened up, it doesn't mean you have to throw yourself straight back into 'normal' life. Start with small steps that feel safe and comfortable for you and remember many of the services available during lockdown will continue to be offered.*
- **FOCUS ON WHAT YOU CAN CONTROL:** *You cannot control how others behave, but you can control how you protect yourself to feel safe. Get vaccinated if you can, wear a mask while indoors or in crowded areas, maintain social distancing and good hand hygiene. Ensure you get your information from reliable sources, and don't let the opinion of others weigh you down.*
- **TALK ABOUT YOUR FEARS:** *Confiding in a trusted person, be it family, a friend, or health care professional, such as your pharmacist about your worries in relation to lockdown easing, ensures you have support while adjusting to these changes.*
- **CHALLENGE YOUR NEGATIVE THOUGHTS:** *When we're feeling anxious about a situation it is easy to start catastrophising or overestimating the danger of the situation. Acknowledge the thought, but also look at the evidence, is it fact, or simply a thought. Focus on the present, rather than getting lost in a spiral of 'what if?'*
- **FIND A ROUTINE:** *While many of our usual routines had to change during lockdown, keeping some routine may help provide a sense of control while things change around us again.*
- **GET HELP:** *Be sure to seek help if you feel like you could use some extra support - your GP or pharmacist is a great place to start. There are also several online resources, specifically dedicated to mental health surrounding COVID-19, such as Beyond Blue's Coronavirus Mental Wellbeing support service.*

- IMPORTANTLY -

The Berry Pharmacy is also here to help you in any way we can. We offer free local home delivery from Monday-Friday. If you don't yet feel comfortable coming into the pharmacy, please call or email, we are happy to collect your prescriptions, have them dispensed and returned to you, along with any other pharmacy items you may need.

It may also be worthwhile considering a weekly medication pack at this time. These packs can help reduce the stress of remembering if you have taken your medication, and also helps keep track of when you need to see your GP for new scripts. We deliver these packs each week to your door.

Phone us on 44641091 or email info@berrypharmacy.com.au

A new counselling service in Berry



St Luke's Anglican Church is partnering with Anglicare to offer a counselling service here in Berry. Anglicare offer a wide range of counselling services with a team of very experienced, professional, and caring staff. They describe their services as being able to offer "privacy and safety to those wishing to talk to someone impartial about concerns they have. This can help you understand what is happening, clarify goals and consider options for change".

Anglicare is able to offer these services at a reduced fee structure as well. This service has run in the past using our facilities and we are really pleased to be able to offer this again to our community.

I know for many people it can be daunting asking for this kind of help. But if ever there was a time to ask for help now might be

it. There have probably been all kinds of pressures on you in this past year. Time in lockdown can have all sorts of impacts on family life and relationships, employment and general wellbeing. And besides all that, life and relationships can be difficult at the best of times, global pandemic or not.

I hope you feel comfortable to reach out if you need it.

You can do this directly by contacting Anglicare and mentioning you live in Berry. Their details are, ph: 1300 651 728 and email: counselling@anglicare.org.au

Their main hub for the Shoalhaven is in Nowra, and this may be preferable to some people as well. If you need any other information don't hesitate to get in touch with me.

ST LUKE'S DOORS RE-OPEN AS WE CONTINUE TO PRAY FOR OUR STATE

I am delighted to invite our community again to our Sunday services at St Luke's. We are so excited to be able to be meet together in person. We love the fellowship of being together and we have missed that greatly. We are making sure that we follow all NSW guidelines so we can return safely. All are welcome to come and experience this fellowship, to join us as we pray for safety in our State, as restrictions continue to ease, and to find out more about our hope in Jesus.

Simon Chaplin (ph): 4464 1058



Dear Members,

For the final lecture of the year on 4th November, 'The Problematic Statue' – a brief history of debunking and desecrating public monuments by Australian lecturer Geoffrey Edwards, we are delighted to announce that we can gather together once again at the Berry Uniting Church Hall to enjoy a digital lecture on the big screen.

Registration opens at 7.15pm with screening commencing at 7.30pm. However, due to current COVID restrictions, we are unfortunately restricted to 31 members in attendance and conditions of entry are that masks must be worn and proof of being double vaccinated provided (no exceptions – requirement of the Uniting Church).

Because of limited seating, we request that you RSVP to Richard Wiseman richardwiseman@hotmail.com by 1st November. If RSVPs exceed 31, a waitlist will be created and you will be notified if you have been placed on the list.

We look forward to catching up with you on Thursday 4 November at the Berry Uniting Church Hall.

The ADFAS Shoalhaven 2022 Program will be published soon, we have another year of great lectures. We look forward to seeing you again next year.

Richard Wiseman ADFAS Shoalhaven

www.adfas.org.au/shoalhaven

E: shoalhaven@adfas.org.au



Growing in faith,
hope and love
Senior Minister Rev. Simon Chaplin

Worship Services

Sundays

- Traditional: 8:00 am.
- Contemporary: 9:30 am with Kids' Church. Great for families.

Bible Study Groups

- Women, men, and mixed groups.

Activities

- Knit with Love: 1:00 pm, Fridays.
- Card Making.
- Exercise Classes.

Visit us

St Luke's Church
68a Princess Street Berry
Phone 4464 1058
Email office@berryanglican.org
www.berryanglican.org

ADVERTISEMENT

Working Hard and
Getting Results
for Berry

Gareth
WARD MP
Member for Kiama

☎ 02 4232 1082 📠 02 4232 3577
✉ Kiama@parliament.nsw.gov.au
🌐 garethwardmp.com.au

Authorised by Gareth Ward MP, 102 Terralong Street, Kiama NSW 2533.
Produced using parliamentary entitlements.



Community Groups

BERRY COMMUNITY GROUPS

Berry Alliance Inc. 0449 569 059
PO Box 202 Berry 2535
info@berryalliance.org.au www.berryalliance.org.au
https://www.facebook.com/BerryTownCrier

Berry Alliance Town Crier 0428 037 572
PO Box 202 Berry 2535 www.berryalliance.org.au
towncrier@berryalliance.org.au

Australian Labor Party Berry 4464 2446
Shoalhaven Heads Branch
Meets 2nd Wednesday each month, 6.30 pm Hotel Berry
secretarybshalp@gmail.com PO Box 325 Berry 2535

Australian Red Cross 4464 1695
President Sue Speck. Mail: 6A Gwenda Ave., Berry 2535
Meetings 1st Wednesday each month at 2pm
Berry Uniting Church Hall

Beaumont Rural Fire Brigade 0416 754 272
beaumontvrbf@gmail.com

Berry Chamber of Commerce & Tourism Inc. 4464 2126
PO Box 216 Berry 2535 info@berry.org.au www.berry.org.au

Berry Courthouse Conservation Committee 0458 369 266 PO
Box 218 Berry 2535 functions@berrycourthouse.org.au
www.berrycourthouse.org.au

Berry Evening View Club 4464 1191
Secretary, PO Box 275 - sel4957@bigpond.net.au

Berry Forum - http://berryforum.org.au/
berryforum@hotmail.com

Berry Masonic Village Auxiliary Inc 4464 2612
President Irene Birks. Mail: 42 Albany Street Berry 2535
Meetings 3rd Wed of month 9.30am at Berry Masonic Village

Berry Meals on Wheels 4464 1774
PO Box 221 Berry NSW 2535

Berry Men's Shed 4464 3956
146 North Street Berry 2535 - Tues and Thurs
berrymensshed@telstra.com

Berry RSL Sub Branch
PO Box 3307 North Nowra 2541 stuartfchristmas@gmail.com

Rotary Club of Berry 0438 130 748
PO Box 81 Berry 2535 www.berryrotary.org.au
berryrotary@gmail.com

Conservation Committee for the Berry Railway Station Precinct
janetfingleton@bigpond.com 0418 651 787

Berry Community Library 0425 220 258
berrycommunitylibrary@gmail.com

The Berry Public School P&C 02 4464 1158
1 Clarence St, Berry NSW 2535 berrypandc@gmail.com

Country Women's Association 0417 423 018
Berry Branch PO Box 321 Berry 2535 - 2nd Friday each
month at 12.30pm in the CWA Rooms, Victoria St.
Contact Emily Boorer

David Berry Hospital Auxiliary 4464 2612
President Irene Birks. Mail: PO Box 285 Berry 2535.
icbsle@bigpond.com
Meetings 2nd Monday of month 10am

Huntingdale Park Resident Action Group 4464 2446
PO Box 325 Berry 2535 rick.bmfberry@bigpond.com

Probus Club of Berry 0421 088 004 / 0424 342 337
PO Box 68 Berry 2535 berryprobus@gmail.com

LEAN Berry/Shoalhaven North 4464 2446
Labor Environment Action Group PO Box 325 Berry
Meetings Berry Hotel Email: bmfberry@bigpond.net.au

Slow Food Berry to Jervis Bay Inc. 0416 018 977
Marilyn O'Dowd
slowfoodberry2jb@gmail.com www.slowfoodbjb.org.au

Zonta Club of Berry 0414 234 100
PO Box 302 Berry www.zontadistrict24.org
Barbara Smith bredgravesmith@gmail.com

ARTS

Australian Decorative Fine Arts Societies - Shoalhaven 4464 2619
PO Box 269 Berry NSW 2535 shoalhaven@adfas.org.au

Berry & District Historical Society Inc 4464 3097
PO Box 153 Berry 2535 www.berryhistory.org.au
berrymuseum@bigpond.com

Berry Spinners and Weavers
Contact the secretary (Virginia)
berryspinnersandweavers@gmail.com

Berry Silver Band (est. 1897) 0490 037 619
Kaye - kayecj@westnet.com.au - Masonic Band Hall

Knit with Love 0404 562 772
St Luke's Church Hall - 68A Princess Street
Contact: Lyn Oades - terryandlyn@gmail.com

Red Berry Quilters 0432 603 484
redberrysec@gmail.com www.facebook/redberriesquiltinggroup

CHURCHES

Scots' Presbyterian Church 0405 139 031
Rev. Isaac Jung - isaac.jung@hotmail.com

Berry Uniting Church 4464 2904 / 0466 717 254
77 Albert Street Berry - berryuniting@gmail.com

South Coast Life Church 4464 2315
8 Schofields Lane Berry - hello@southcoastlife.org

Meroo Union Church 4448 6048
Corner of Boxells Lane & Princes Hwy,
Meroo Meadow. Contact Rae 4448 6048

St. Patrick's Catholic Church Berry 4723 1712
7 Albert Street, Berry www.nowraparish.com.au
office@nowraparish.org.au

St. Luke's Anglican Church 4464 1058
68A Princess Street, Berry 2535
www.berryanglican.org office@berryanglican.org

EDUCATION AND PLAYGROUPS

Berry Computers for Seniors 4421 3270
PO Box 103 Berry 2535
Uniting Church Hall, 77 Albert Street Berry
berrycfs@gmail.com

Berry Community Pre-school 4464 1764
PO Box 143 Berry 2535
berrypreschool@bigpond.com www.berrypreschool.org.au

Berry Kids' Club at Presbyterian Church 02 4464 1020
83 Victoria Street - Meet 2 Fridays per month

Let's Play 0403 791 886
South Coast Life Church, 8 Schofields Lane, Berry
Sharayah@southcoastlife.org

GARDENING AND LAND CARE

Berry & District Garden Club 4464 1191
PO Box 122 Berry 2535 St Luke's Church Hall, Princess Street.
Deb Wooster Secretary www.berrygardens.org.au

Berry Landcare 4464 2241
PO Box 422 Berry NSW 2535 berrylandcare@gmail.com

Berry Public School Plant Propagation Nursery
Lyn 02 4464 3911 - lyn-clark@outlook.com.au

Brogers Creek Landcare 4465 1482
543 Wattamolla Rd Wattamolla
andrew.fitzsimons@det.nsw.edu.au

Gateway Community Garden 0423 267 957
141 Woodhill Mountain Road
Contact: Laurie Watson - watto148@gmail.com

RECREATION

Berry Camera Club 0488 031 961
Meetings on 4th Wednesday of Each Month
6:00pm @ Berry Bowling Club

SPORT

Berry Golf Club 0429 429 743
jamesauld48@bigpond.com
Meet at the Berry Bowling Club

Berry Fishing Club 0448 479 925
jeffery@shoalhaven.net.au
PO Box 41 Berry
Meet at the Berry Bowling Club

Berry Men's Bowling Club 4464 2995
PO Box 139 Berry NSW 2535 Club

Berry Tennis Club
PO Box 133 Berry NSW 2535
Email: berrytennis@hotmail.com

Berry Riding Club 0410 506 143
Berry Equestrian Centre
jasiiy@bigpond.net.au www.berryridingclub.com

Berry Shoalhaven Heads Rugby League Club 0413 915 215
berryrugbyleague@gmail.com
facebook.com/berryshoalhavenheadsmagpies

Berry Women's Bowling Club 4464 3624
Berry Bowling Club. Contact Heather Fealy
Pam Tulloch: 4464 2284

SPONSORED & PARTNERED GROUPS

Shoalhaven Heads Surf Life Saving Club 0432 331 915
www.headssurf.com.au info@headssurf.com.au

A Taste of Paradise 0490 060251
Supporting Youth In Need
PO Box 128, Berry info@atasteofparadise.org.au

Berry Farmers Market 0431 823 078
Berry Showground Cow Sheds - Thursdays 3-5pm
www.berryfarmersmarket.com.au. Facebook.

Boomerang Bags Berry
elizabeth@berryquiltingretreat.com.au

Bundanon Trust www.bundanon.com.au 4422 2100
Facebook

Friends of Berry Cemetery Group Group currently being
formed - barlowpeach@gmail.com
janetfingleton@bigpond.com

Pink Up Berry Pink Up Berry Committee 0428 005 910
pinkupberry@gmail.com - Deb Woolford

SALT Ministries 4480 5028
Supporting those in need 5-19 Birriley St, Bomaderry
info@salt.org.au and facebook

Shoalhaven Education Fund - A part of the Country
Education Foundation - www.cef.org.au/shoalhaven -
https://www.facebook.com/ShoalhavenEducationFund/

U3A Shoalhaven (02) 4424 0216
5/48 Berry Street Nowra NSW 2541

Berry Community Groups – please ensure that you register with the Berry Town Crier.

If your group is yet to submit your registration renewal form please do it now as we can no longer accept submissions from groups who have not updated their details. There is a new, clearer form so please email info@berryalliance.org.au to receive a copy.

You will also see a new category called "Sponsored & Partnered Groups" These are the groups that the Berry Town Crier has agreed to sponsor or create a partnership with as they do not fit our guidelines for usual registration but we have chosen to assist them. These are limited due to availability of space in the Town Crier.

Berry Alliance and Town Crier Management Committee

EMERGENCY 000

Police Assistance Line (Non-Urgent Police Reports) 131 444
Berry Police 4464 2175
Fire & Rescue NSW 4464 1008 or 000

Rural Fire Brigade (Broughton Vale) 4464 1522
SES For Emergency Help in Floods & Storms 132 500
Ambulance - always call 000

Sustainable BERRY



CARDBOARD BOXES FOR YOUR GARDEN

Many of the retailers in Berry end up with large amounts of cardboard from freight. You'll find that they are often happy for you to take the cardboard for free. I use cardboard under mulch, to cut down on weeds and maintain moisture in the soil. Mulch is free from the Berry Waste Depot; all that is required is your free labour and you've got a weed-free, water conserving garden bed.

THE BERRY WASTE DEPOT

You can dispose of the following household items for free:

- Car and household batteries
- E-waste

- Fluro tubes and light globes
- Gas bottles
- Smoke detectors
- Motor oils (up to 20L)
- Other oils (up to 20L)
- Oil- or water-based paints (up to 20L)
- Fire extinguishers
- Clean polystyrene sheets or boxes (Note: polystyrene used for food containers has to go into landfill, in your red bin)
- Scrap metal
- Whitegoods (a fee for refrigerant removal may apply)

YELLOW BINS AND SOFT PLASTICS

- The Berry Post Office is accepting soft plastics for recycling. You'll find the deposit box at the rear of the post office.

- Not sure about the label on your hard plastics? Before you bin it, visit recyclingnearyou.com.au/ar1
- Collect clean aluminium foil to the size of a tennis ball size before recycling. Small items can fall off conveyor belts or block machinery.
- Plastic lids and small metal lids (eg beer caps) have to go in the red bin.
- Polystyrene should never go in the recycling bin. See above for more information.
- Only glass packaging for food goes in the yellow bin, any other glass goes in the red bin.



DON'T FORGET TO
FILL UP YOUR
REUSABLE BAG AT THE



HELD EVERY THURSDAY,
AT THE COW SHEDS
BERRY SHOWGROUND
3 PM - 6 PM

FRESH LOCAL PRODUCE AVAILABLE,
ENTERTAINMENT FOR ALL THE
FAMILY AND MUCH MORE.



PROUDLY SPONSORED
BY THE
BERRY ALLIANCE
TOWN CRIER



**SUPPORT
LOCAL BUSINESSES**

**BUY LOCAL,
SUPPORT LOCAL,
STAY LOCAL**

**It is better for the local businesses,
better for us as a community and safer for you.**

We recommend that wherever possible you support local businesses, many of whom can be found advertising in the Town Crier each Month. These Advertisers support our community by advertising in the Town Crier which allows us to produce and distribute it to you, our community.

DEVELOPMENT APPLICATIONS AND DETERMINATIONS

Here is a list of the most recent Shoalhaven City Council Development Applications and Determinations since the list was produced in the Berry Town Crier – October 2021 edition.

The information on how you can see details and follow these applications, make submissions and see the determinations and details of any conditions applied is provided in the Town Crier each month as well as in the “Friends of the Berry Town Crier” Newsletters sent out regularly between editions of the Town Crier.

Go to: <http://www3.shoalhaven.nsw.gov.au/masterviewUI/modules/ApplicationMaster/Default.aspx> Development Application Tracking.

DEVELOPMENT APPLICATIONS

DA21/2041 –	1-9-2021	–	Single Storey Dwelling – 48 Parker Crescent, Berry.
CD21/1678 –	7-9-2021	–	New Urban Dwelling – New Dwelling – 20 Parker Cr., Berry.
CD21/1679 –	7-9-2021	–	New Construction of Structure for Lift Installation – 9 Parker Cr., Berry.
CD21/1684 –	7-9-2021	–	Dwelling Alterations & Additions – 91 Queen St. Berry.
DA21/2081 –	10-9-2021	–	Farm Stay Accommodation - 400 Strong's Rd. Berry.
CD21/1695 –	13-9-2021	–	In-Ground Swimming Pool – 81 Parker Cr Berry.
DA21/2102 –	14-9-2021	–	Swimming Pool – 8 Tilgman St, Berry.
CD21/1715 –	23-9-2021	–	Dual Occupancy (Attached 2 Units) – 49 Queen St, Berry.
SF10896 –	20-9-2021	–	Two Lot Subdivision (Rural) – 35 Bryan Cl, Berry.
DA21/2173 –	28-9-2021	–	Seniors Housing, Use of Existing Recreation Facilities (indoor), Provision of New Roads & Stormwater Management System – 10 Victoria St, Berry.
CD21/1726 –	28-9-2021	–	Detached Shed – 42 Clarence St, Berry.
DA21/2180 –	29-9-2021	–	Two Storey Dwelling, In Ground Swimming Pool & Decking – 9 King St, Berry.
DA21/2188 –	30-9-2021	–	Dwelling Alterations & Additions – 26 Windsor Dr, Berry.

DEVELOPMENT APPLICATIONS DETERMINED

DA21/1960 –	Approved –	2-9-2021	–	Single Storey Dwelling – 14 Mount Vista Cl Berry.
CD21/1678 –	Approved –	3-9-2021	–	Two Storey Dwelling – 20 Parker Crescent Berry.
CD21/1679 –	Approved –	3-9-2021	–	Dwelling Additions – Structure for Lift Installation – 9 Parker Crescent Berry.
DA21/1879 –	Approved –	3-9-2021	–	Dwelling Alterations & Additions – 24 Brangus Cl. Berry.
DA21/1897 –	Approved –	30-8-2021	–	Two Storey Dwelling & In Ground Swimming Pool – 10 Tilgman St Berry.
DA21/1960 –	Approved –	2-9-2021	–	Single Storey Dwelling – 14 Mount Vista Cl Berry.
CD21/1684 –	Approved –	7-9-2021	–	Dwelling Alterations & Additions – 91 Queen St. Berry.
CD21/1695 –	Approved –	9-9-2021	–	In-Ground Fibreglass Swimming Pool – 81 Parker Cr., Berry.
DA20/2374 –	Approved –	8-9-2021	–	Multi Dwelling Housing ten (10) Units – Hitchcocks Lane, Berry.
DA21/1905 –	Approved –	10-9-2021	–	Convert Barn into Attached Secondary Dwelling – 209 Devitts Lane, Merroo Meadow.
DA21/1871 –	Approved –	15-9-2021	–	Retaining Wall – 23 Connors View Berry.
DA21/1802 –	Approved –	15-9-2021	–	Two Storey Dwelling – 73 Parker Cr. Berry.
DA21/1877 –	Approved –	13-9-2021	–	Plunge Pool – 20 Parker Cr Berry.
DA21/1830 –	Approved –	17-9-2021	–	Dwelling Additions – swimming pool, tennis court, arbour, rainwater tank, landscaping & paving – 271D Tindalls Lane Berry.
CD21/1715 –	Approved –	21-9-2021	–	Dual Occupancy (Attached 2 Units) – 49 Queen St Berry.
DA21/1831 –	Approved –	21-9-2021	–	Two Storey Dwelling - 6 Parker Cr Berry.
CD21/1726 –	Approved –	27-9-2021	–	Detached Shed – 42 Clarence St, Berry.

Brought to the Berry community by the Berry Alliance and Town Crier Management Committee.



BROUGHTON VALE / BERRY RURAL FIRE BRIGADE BUSH FIRE DANGER PERIOD AND FIRE PERMITS

The Bush Fire Danger Period commenced from Wednesday 1 September 2021.

“Anyone wishing to light a fire during the Bush Fire Danger Period must obtain a free permit in addition to notifying their local fire authority and neighbours 24 hours before lighting up. If a fire does escape, make sure you call Triple Zero (000) immediately so that emergency services can respond and minimise the damage.” Commissioner Rogers said. “Now is the time to update and discuss your bush fire survival plan. Have the conversation with your family about what you will do during a fire – talk about when you’ll leave, where you’ll go, what you’ll take and what you’ll do with animals.”

For details on making a bush fire survival plan visit www.myfireplan.com.au

For information about the Bush Fire Danger Period, go to www.rfs.nsw.gov.au/BFDP

To notify of your intent to burn, use the online burn notification tool at www.rfs.nsw.gov.au/notify



For information about the Bush Fire Danger Period, go to www.rfs.nsw.gov.au/BFDP



100 YEARS
PEOPLE HELPING PEOPLE
1914-2014

THE RED CROSS TELECROSS

Telecross is a program run by Red Cross aimed at supporting people so they can remain more independent and in their own home. It also keeps them connected to their local community. It is for people who live alone and are frail or elderly, have a disability, are housebound or recovering from an illness or accident. It is for those who are at risk of an accident or illness that may go unnoticed. It can be used temporarily, for example when someone has just returned from a stay in hospital.

Volunteers are matched with a person and make a call each morning to check they are OK. If the call goes unanswered, Red Cross will take action to make sure they are OK. This also provides a friendly voice to wake up to each morning and provides reassurance and peace of mind which in turn helps maintain independence.

If you wish to find out about volunteering you can contact Red Cross. If you wish to find out about receiving a call each morning or know someone who does, then contact Red Cross or the Federal Government's My Aged Care portal.

BECOMING A MEMBER OR VOLUNTEERING

IF YOU WISH TO FIND OUT ABOUT BECOMING INVOLVED WITH OR VOLUNTEERING WITH THE RED CROSS CONTACT THE BERRY BRANCH OF THE RED CROSS (SEE COMMUNITY GROUPS PAGE OF TOWN CRIER FOR CONTACT DETAILS), THE NOWRA RED CROSS OFFICE (1800 621 433) IN GRAHAM ST NOWRA OR GO ONTO THE RED CROSS WEBSITE.

WWW.REDCROSS.ORG.AU

On Your Side.

I am your representative in the Australian Parliament. I can help with issues like Medicare, Centrelink, aged care and pensions, the NDIS, Veterans' Affairs and community grants.

I can also arrange special birthday and anniversary messages, and information for pensioners and seniors.

You can contact me on 4423 1782.

Fiona Phillips



FIONA PHILLIPS MP

FEDERAL MEMBER FOR GILMORE

Authorised by Fiona Phillips, ALP, 3/59 Junction Street Nowra

- ☎ (02) 4423 1782
- 📍 3/59 Junction Street Nowra NSW 2541
- 📍 1/6-8 Orient Street Batemans Bay NSW 2536

- ✉ Fiona.Phillips.MP@aph.gov.au
- 📱 Fiona Phillips MP @fiboydphillips
- 🌐 FIONAPHILLIPS.COM.AU

Berry Presbyterian Church

How often have you read a verse, a passage, a story or a book in the Bible and thought that's a good thing to remember, but by a few hours or a day later you can't remember it or why it was so important?

How do you learn? People are mostly curious about the world around them. We want to understand and make sense of ourselves and other people. Small children play, explore and learn through their environment. Some people are able to listen and learn best that way. Some draw, sing or be creative to understand and learn. Some need pictures to help them learn and understand.

"Tell me and I forget, teach me and I will learn, involve me and I will remember". A lovely quote from Benjamin Franklin,

How did Jesus teach? He taught a lot using parables, which are earthly stories with a heavenly meaning. What does that mean? One of the parables is 'the lost son'. It tells of a son who just wants everything his own way and does everything his own way until he realises that his own way is not good and decides to go back to his father and ask him to forgive him. The father is so pleased to see him that he throws a party. What is the heavenly meaning here? The father, letting the son go, is God and we, his children are represented by the son. The son does all sorts of things that are wrong but learns a lesson and returns to the father. When we do wrong things, God is waiting for us to come back to Him to say, I'm sorry, please forgive me. 1 James 22-24²² Do not merely listen to the word, and so deceive yourselves. Do what it says.²³ Anyone who listens to the word but does not do what it says is like someone who looks at his face in a mirror²⁴ and, after looking at himself, goes away and immediately forgets what he looks like.

This verse from James tells us that just reading or hearing the words of God are not enough, we need to act on them. Acting, could be caring for others, listening to a friend, helping a person in need, stepping in to stop someone doing the wrong thing or saying sorry for a mistake made.

Jesus taught that being kind, forgiving people, helping others and caring is the way God wants us to live. How can we do that? 'Listen to the word and do what it says'.

It's time! Local Government Elections Now 4th December 2021

Your Shoalhaven Labor Ward 1 Team



1 MATTHEW NORRIS

2 ANNETTE ALLDRICK

3 LAURIE PATTON

4 OLIVIA ALLDRICK

VOTE 1 WARD 1

SHOALHAVEN LABOR

It's time for change

Shoalhaven Labor

MATTHEW NORRIS

Matthew is the lead candidate for Labor's Ward 1 team. He is 30 years old and has lived in the Shoalhaven his entire life. He is a motorsports commentator and retail manager. Working in a variety of small, locally-owned businesses has given him an insight into how our Council can help business grow and create jobs - keeping locals employed and our economy thriving.

Matthew is a younger leader and is the President of his local Labor Party Branch as well as other leadership roles.

His passions include our environment, addressing the housing situation and ensuring Council deliver excellent services.

He brings fresh ideas and wants to help make Council a more collaborative organisation and will work hard to ensure the voices of all the people he'll be representing are heard.

LAURIE PATTON

Laurie is like so many who have left the 'big smoke' to enjoy a better life here in the beautiful Shoalhaven. He is a former journalist and television executive and, more recently, has worked in the not-for-profit sector.

Laurie has been a high profile campaigner for improvements to the NBN which he sees as vital infrastructure for the regions. With their primary focus on capital cities the current federal and state governments have neglected the Shoalhaven. Better healthcare facilities, affordable housing and sustainable development are among Laurie's top priorities to be championed by our council.

ANNETTE ALLDRICK

Annette is a councillor and running for re-election as part of the Labor team. She is a registered nurse and midwife working at Shoalhaven Hospital and more recently has stepped up and is administering covid vaccines.

As a branch official of the Shoalhaven Hospital Branch of the N SW Nurses & Midwives Association Annette has fought tirelessly to improve not only working conditions for the nurses and midwives but for better care for the patients and their families. She brings the same passion to being a councillor, Annette has been particularly concerned about the behaviour of some councillors during this term and wants to see the rude and at times bullying behaviour stopped.

OLIVIA ALLDRICK

Olivia is an emerging young leader who brings passion for social welfare and justice, having just completed her Bachelor of Social Science (Criminology) degree this year.

Raised on the South Coast, schooled in our area, and currently working at the local shop, she is passionate for change in the Shoalhaven.

In the years leading up to university and throughout, she has played an active role in various organisations and leadership forums which promote multiculturalism and foster positive change within our communities.

Together we can create prosperous and liveable places, that improve the quality of life of residents and build stronger communities.

Our Labour values will help shape a council that is:

- Ethical, progressive and driven
- Focused on sustainable development that protects our environment and heritage
- Led by community priorities

Labor

Vote 1 Labor above the line to make sure your voice is heard



0475 893 981



shoalhavenlaborward1@gmail.com



@shoalhavenlaborward1

Authorised by Gerald Moore OAM, 1/55 Merroo St, Bomaderry NSW 2541.



DONATE



view

voice, interests and
education of women

Nothing to report - well that's not true if everything goes to plan. The Berry Evening VIEW Club will meet again at the Berry Bowling Club on the 3rd Wednesday in November at 6.30 pm for 7 pm start.

If you want to join us or cancel, ring Jan on her mobile 0490054574 note the other number no longer exists.

To help you remember, write it down as you never know. If you need to cancel anytime although we are not game to get a sniffle these days anyway you know the drill, ring before 12 pm on the Sunday before the Wednesday meeting.

Our Coffee morning will be at the Garden at 10.30 am on the 4th November ring Merril 0418544533 if you want to go.

The November meeting will be a surprise and a fun evening and December will be Christmas and Birthday rolled into one, so unpack your red gear because it is all right for both events. Hopefully 2022 will be a better year - only time will tell.

Yolande Buchan, Publicity

Berry Community Library

The Community Library is hoping to re-open at the beginning of November. It will be so good to be back and catch up with all our lovely friends. We will need to ask that only fully vaccinated people enter the room to protect our volunteers who are also fully vaccinated.

We've had lots of great, current fiction books donated. Berry is a great reading community and many thanks to those who donate such wonderful books to share with us all.

Follow us on Facebook to keep up with our activities.

**77 Albert Street, opposite the IGA carpark, behind the Uniting Church.
For more information contact Janet on 0425 220 258**



Become a Friend OF THE BERRY TOWN CRIER

**BECOME A FRIEND OF THE
BERRY TOWN CRIER AND RECEIVE:**

- ▶ **UPDATES**
- ▶ **NEWSLETTERS**
- ▶ **BREAKING NEWS**
- ▶ **ELECTRONIC COPY OF THE BERRY TOWN CRIER**
- EACH ISSUE COLOUR EDITION**

**JUST EMAIL [INFO@BERRYALLIANCE.ORG.AU](mailto:info@berryalliance.org.au)
AND GIVE US YOUR:
NAME/PHONE/ADDRESS/EMAIL**

NAME:

TELEPHONE:

ADDRESS:

EMAIL:

RETURN TO: info@berryalliance.org.au
Drop Box in the Berry PO

SCOOTERS WHOLESAL

WE COME TO YOU

2/21 Quinns Lane, Sth Nowra



PH 4422 8438
scooterswholesale.com.au
Servicing the Berry District Since 1992



71-77 Albert Street Berry

Come and join us

Sundays at 9.30

in person or on Zoom

for joining details

email berryuniting@gmail.com

Minister: Rev Andrew Watts

0400 059 191

www.berryuniting.org



Scots' Presbyterian Church, Berry

Minister: Rev Isaac Jung

Service Time

Worship Service 10am

Jesus And Me (JAM)

& High School Bible Study 10am

Bible Fellowship Groups

Tuesday 5.30pm • Thurs 10am • Friday 10am

Activities

Kids' Club

Presbyterian Womens' Assoc

Mens' Group

*Ordinary People worshipping
an Extraordinary God*

www.berrypresbyterianchurch.net.au

02 4464 1020

Cnr Alexandra Street & Victoria Street, Berry

**HONEST, COMPASSIONATE LEADERSHIP
IN WARD 1**



Tonia Gray

**MAYOR
AMANDA FINDLEY**

Bradley Stanton

VOTE 1 AMANDA FINDLEY

**AND THE
SHOALHAVEN GREENS**



Authorised by Amanda Findley, The Greens NSW. Suite D, 263-279 Broadway, GLEBE NSW 2037.



BERRY MEN'S SHED



ANNUAL CHRISTMAS SALE TO BE HELD SATURDAY 4th DECEMBER

This year's annual sale will be held on Saturday 4th December commencing at 8.00am and concluding at 1.30pm. COVID requirements will be in place as required for your safety.

We will have a large number of quality items for sale at very competitive prices. We will have credit card facilities again this year which was welcomed by our customers last year.

The funds raised from our annual sale will go towards our Scholarship programme with schools in the Shoalhaven. This will be the 8th year that the Men's Shed has financially supported local students with their future education. This year we have expanded our programme to include the Shoalhaven Education Fund.

The AGM for the Shed will be held on Tuesday 7th December and more information will be provided to members in coming weeks. The

Men's Shed Christmas Party will be held on 16th December and will be a luncheon held on the premises.

We look forward to seeing you at our sale on Saturday 4th December, please come along and support our efforts in assisting students from the Shoalhaven.

Richard Wiseman
Berry Men's Shed

Berry & District Garden Club News



Summer is looking to be a damp season of hope and revived spirits. Our gardens have been well looked after during the enforced home stay and are a pleasure to work in. Spring has reminded us of intoxicating scents, soft and vibrant colours, and enthusiastic displays of fresh growth. Some of the trials and unpleasant memories of the past years are lessening.

Unfortunately, our 59th Camellia and Floral Show in August was abandoned, regular meetings have been Zoomed, and our annual Berry Gardens Festival again cancelled, but the show goes on. We are preparing a virtual tour, The Gardens of Berry, to compensate

for the Festival until we can meander through local properties again in person. Drone, video and stills photographers have been engaged, with the release of the feature envisaged for early December.

Our plant propagation helpers have amassed an amazing quantity and variety of stock to offer customers. We will have a stand at the Sunday, 5 December show ground market, 8:30 am - 2:30 pm. There will be special varieties included, gleaned from our featured gardens. The proceeds go to our long-standing Berry Beautification Fund, which has a proud list of achievements to its name and credit.

We welcome visitors, particularly new residents, to our meetings, usually held each month on the third Tuesday. A very special 23

November meeting will include our delayed AGM, an awards presentation, and a warm welcome to our many new members - all under the social banner of an end-of-year get together. The website, berrygardens.org.au, will advise, if indoors numbers are still restricted, the alfresco setting for the meeting. Protocol for our future face-to-face meetings will carefully and strictly adhere to health standards and community expectations. Full vaccination will be required for entry, without exemptions. There is information on those pages also concerning the club, upcoming events, membership matters and gardening advice. Check our always-engaging Instagram and Facebook presence also.

 **CHECK OUT OUR
FACEBOOK PAGE ALSO**

Our motto: *Friendship through Gardening.*

Secretary, Deb Wooster, welcomes enquiries at secretary@berrygardens.org.au

&

For Sale

Talk to our agents to find out why now is a great time to sell!



BERRY
36 Parker Crescent



BERRY
4 Pulman Street



BERRY
9 Pulman Street



BERRY
29 Victoria Street



BERRY
11 Station Street



BERRY
17 Prince Alfred Street



BERRY
7 Kentia Crescent



BERRY
51 Queen Street



BERRY
19 Queen Street



BERRY
7 Princess Street



BERRY
10 Gwenda Avenue



JASPERS BRUSH
B585B Princes Highway



When making a major life decision, be supported by an experienced team

With the largest sales team of industry professionals working together to get your property sold. All our agents are licensed and experienced with three having previously owned and operated their own full service agencies. Its all about teamwork, not individual sales.

We are talking to more buyers and negotiating more sales.

Talk to us to see what we do and why our unique approach has made us the Number 1 selling agency in the Berry Region.

Our Agents

Jacqui Crapp 0429 104 011

Mira Edwards 0414 247 863
Luke Tancred 0435 283 299

Susie Timbs 0414 767 707
Gaynor Peters 0411 125 667





ZONTA
INTERNATIONAL

EMPOWERING WOMEN
THROUGH SERVICE & ADVOCACY

ZONTA SAYS NO

JOIN THE CAMPAIGN TO END VIOLENCE AGAINST WOMEN

Zonta Club of Berry has remained busy, inducting new members, and providing support where needed despite our inability to get out and do our traditional fundraising. Berry commemorates Breast Cancer awareness month in October, by 'pinking' up the town. The local pharmacy has been supportive of our efforts of a window display which features our Zonta Breast cushions. Any proceeds raised from this event, contributes to the funding of McGrath nurses.

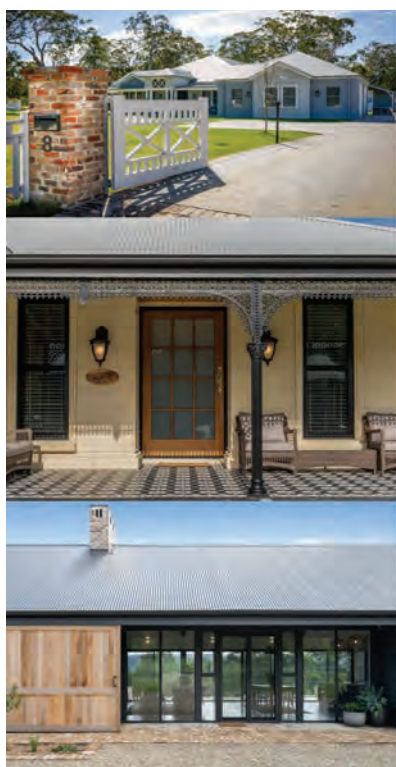
The Shoalhaven Education Fund (SEF) is a worthy recipient of our two annual Zonta grants of \$2000. The grants are for students undertaking further vocational training or university education post high school. One of the grants is dedicated for local indigenous students.

The small Aboriginal community of Enngonia (Clara Hart Village) located about 100 km north west of Bourke has recently been severely affected by COVID-19 with

multiple positive cases and the passing of a very much-loved elder. The community were unable to access grocery and personal supplies due to the closure of the supermarket at Bourke and COVID isolation. Zonta Club of Berry has supported Enngonia with the shipment of 6 boxes of books and stationery for the school students and supplies of sanitary, continence and baby supplies.



AND LIKE US ON FACEBOOK!



Looking to build your

forever home?



Shoalhaven's Custom
Quality Home
Building Specialists

A decade of award winning homes

www.harlorbuilding.com | 0468 790 210 | admin@harlorbuilding.com



Master Builders Association
MASTER BUILDER. BETTER BUILDER.



BERRY RIDING CLUB

With the State on the road to recovery, we're dusting off the cobwebs, raring to go and looking forward to meeting up once again with old friends and new. We hope you were entertained with the outstanding performance of the equestrian team at the Tokyo Olympics who came away with the silver medal in the team Eventing program - three days of competing, three different disciplines (Dressage, Show jumping & Cross Country), tough horses and tough riders. BRC Club President & super proud mum got to see her son Shane Rose represent Australia and win his second silver medal. To beat some of the world's best was certainly thrilling!

Fun fact - did you know that there is nowhere for people in our area to train for 3-day events like you saw on the TV? That's part of the reason we're building an outstanding cross-country course at our grounds so our future Olympians can practice and represent their country with pride. More on that later.

For November, we decided to jump back into it and host a number of events for every genre. We have the following days booked and something new every weekend.

Dressage Practice Day: Sat 6 November.

Dressage Competition: Sun 7 November.

Funkhana in Pink: Sun 14 November.

Working Equitation Play & Ribbon Day:

Sat 20 November and

Clear Round Jumping: Sun 21 November.

Our Funkhana in Pink is an absolute must and it's wonderful to see an explosion of pink and the smiles of happy riders and perplexed looks of the horses looking at each other all decorated in pink. If you can only come out for one event to watch - this is the one for sure.

We are a Covid safe club and in compliance with government regulations so please check our Facebook page for the current requirements to attend our grounds.



Check the calendar on our website for upcoming events www.berryridingclub.com



Knitting News



Throughout the lockdown, our *Knit with Love* ladies have continued to knit. We would endorse the findings of a UK International Survey carried out by J.Riley and B. Corkhill (<https://journals.sagepub.com/home/bjo>) and encourage others to take up knitting. Their results show a significant relationship between knitting frequency and feeling calm and happy. They say that more frequent knitters also reported higher cognitive functioning and that knitting in a group impacted significantly on perceived

happiness, improved social contact and communication with others. Their conclusion? Knitting can contribute to well-being and quality of life. As a skilled and creative occupation, it has therapeutic potential.

So if you are a knitter or a wannabe knitter, know that you would be very welcome at our group. We knit for charities and have a number of current projects. You just need to bring size 4mm (no.8) needles and we will supply patterns, wool and help. We meet

every Friday at St Luke's Church Hall (68A Princess St) from 1 to 3pm as an activity of the Church.

Our latest project has been to knit Trauma Teddies for the Red Cross, to be given to Afghani refugee children.

Since 17th Sept, as COVID regulations have allowed, we have met for "Knitting Picnics" in groups of 5 in Princess Street Reserve. It has been so good to get together. As of 15th October we return to the Church Hall.

Lyn Oades, Coordinator (0404 562 772)



It's been some time since the Berry Chamber of Commerce had a piece in the Town Crier, but with the new committee elected at our recent Annual General Meeting in place and our new plans forming we thought what better time to provide everyone with an update.

Our new and larger committee represents a fantastic blend of new and long serving members from the business community. Your Chamber committee is –

President	Michael Smith
Vice President	Louise Hallum
Admin Secretary	Jean Sorensen
Minutes Secretary	Liz Parnell
Treasurer	Bill Seelis
General Committee	Anthony Colfelt, Bert Payne, Elizabeth Clark, Bill Rice, Justin Rickard, Sandy Bramley

Whilst chamber business has been ongoing (representations to all telecommunication companies and government to improve service, Queen Street works upgrade, rail crossing upgrade timing, etc), the new committee decided early to seek the feedback of members on how we have been performing and what they would like our focussed attention on in the years ahead. This has lead us to make these three areas things our key big ideas moving forward –

- The development and furthering of an integrated plan for Berry including streetscape, lighting, seating and general amenities. This is not something that will happen overnight, but the committee has heard clearly from members that a future proof and environmentally sensitive plan for the town is in the interest of all businesses in and around Berry. As we move forward with this we will work with the many other champions of Berry (including The Forum, The Alliance), as a united development undoubtedly has the highest chance of securing funding and ultimate success
- With Berry (outside of restrictions) already a vibrant place on weekends, we heard clear feedback that developing opportunities to

support business mid-week would be well received. This doesn't mean we would stop promoting Berry to the general visitor economy (with a reach of over 50000 people via our social media pages - just one channel for our marketing), but it does mean we will develop ideas to bring more business to town through the week. This will likely include a focus on the retired market for day trips, but also an attempt to attract business to the area through events and away days or conferences – something the business sector often participate in

- The final area is to work with the community on the further development of activities in the surrounds of Berry that will attract visitors any day of the week. In this regard we believe the development of the infrastructure at Boongaree is a perfect example of the type of facility that will bring visitors to the area and help distribute what are often high numbers of people from the heart of town into surrounding areas, not to mention the benefits to all locals. We will work with members, the community and various levels of government as we forward and support plans for facilities like this – perhaps including walking trails, bicycle pathways, improved picnic areas, but to highlight a few.

The survey included a good amount of ideas and feedback from members, all of which we have captured, but to mention a few –

- Regular member get togethers both on topical subjects (with guest speakers) as well as networking opportunities
- Heightened focus on the website and social media pages – with many members commenting on the benefits they provide
- Improved signage in and around town, often mentioned was better directions to the toilets (continuing to support improvement and cleanliness of toilet facilities was often mentioned)
- Continued support of events in Berry – something particularly relevant after a year of cancellations

This of course all fits in with our charter to grow the local economy, to serve as a voice for business and to deliver value to our members by –

- Actively promoting Berry and its events through television, print and radio advertising as well as social media
- Organising information and networking events for its members
- Making representations on behalf of Berry's businesses at local, state and federal government levels
- Contributing critical funding and advertising support to other local events that bring custom and support to local businesses.
- Supporting Berry and its businesses through community events – by the way Christmas decorations have been arranged by the Chamber to go up in town Monday 22nd November
- Develop greater benefits for members not directly involved in tourism to make membership not only worthwhile but an opportunity that cannot be missed

As your new Chamber of Commerce embarks on these plans we would like to thank the over 180 business members that allow us to make plans and represent on their behalf. We would dearly love all businesses in the area to join the Chamber (a starting place would be to drop us a line at info@berry.org.au, our facebook page <https://www.facebook.com/BerryChamber> or you can call Michael on 0411142444) – the more members we have the louder our voice in securing the attention of those that provide funding and assist in making big things happen. Of course, it's also appropriate to thank the Chamber Committee and those who have gone before us, for their tireless efforts in making Berry a better place to do business.

In closing, we look forward to seeing all members at our first face to face gathering in a while – 6pm, Monday 6th December, Berry Hotel.

THE LOCAL SPORT GRANT PROGRAM 2021-22 IS NOW OPEN FOR APPLICATIONS

The \$4.6 million Local Sport Grant Program is available to eligible organisations to help support initiatives in local NSW communities. The program will help support projects that:

- Increase regular and on-going participation in sport
- Increase participation and access for women, girls & population groups with low participation rates
- Address barriers to participation in sport or structured physical activity

- Assist sporting clubs in provide quality service to their members and the local community

Grants between \$500 - \$15,000 are available to eligible organisations. The amount organisations request should reflect the scale of the project/s.

For more information on eligibility, assessment process, visit the Office of Sport website now and, if eligible, submit an application before 1pm, 19 November.

LOCAL SPORT GRANT PROGRAM 2020/21 RESULTS

Last year of the Local Sport Grant Program saw more than 930 grants awarded, with these projects playing an important role in helping sporting organisations continue to support the health, social and economic wellbeing of communities.

Check out the fantastic projects that can be built with an Office of Sport grant.

ADVERTISING RATES

TRADES & SERVICES

**1
ISSUE
= \$60**

**6
ISSUES
= \$252**
(\$42 EACH ISSUE)

**12
ISSUES
= \$432**
(\$36 EACH ISSUE)

DIMENSIONS ARE 62MM WIDE X 51MM HIGH

DISPLAY ADS

- **1 COLUMN** Single rate = \$110 or Repeat rate = \$297 (\$99 x 3 issues)
Dimensions: 100mm high x 62mm wide
- **2 COLUMN** Single rate = \$143 or Repeat rate = \$363 (\$121 x 3 issues)
Dimensions: 100mm high x 125mm wide
- **3 COLUMN** Single rate = \$176 or Repeat rate = \$495 (\$165 x 3 issues)
Dimensions: 100mm high x 190mm wide
- **FULL PAGE** Single rate = \$363 or Repeat rate = \$900 (\$300 x 3 issues)
Dimensions: 277mm high x 190mm wide

Contact the
Editor Nancy Davies at
towncrier@berryalliance.org.au
or 0428 037 572

TRADES & SERVICES DIRECTORY

**SPACE
AVAILABLE**

CONTACT THE EDITOR
0428 037 572
towncrier@berryalliance.org.au



- All Earthworks
- Landscaping
- Driveways
- Rural Roads

Charlie 0418 429 740
charlie@ckbcivil.com.au



Lic 244729c

John Hawkins Concretor

We aim for a professional finish and work with the customer to obtain the job they desire.

Specialising in:

- Stamped
- Stencil
- Colour Cove
- Black Basalt
- Machine Finish
- Stained

P: 0401 236 850

FULLY LICENSED & INSURED • QUALITY FIRST • LIC NO: 169901c



Television Antennas SHOALHAVEN ANTENNAS

Servicing Berry and surrounding areas.

- Digital Upgrades
- New Installs
- TV Tuning
- Repair existing systems
- Add Phone/TV Outlets



shoalhavenantennas@gmail.com
Ph: 0410 526 672 Fax: 02 4422 6672

FOCUSED Cleans

focusedcleans.com.au

We focus on...

- Homes
- Offices
- End of lease cleans
- Holiday home cleans
- Insurance cleans
- Spring cleans
- Windows
- Ovens



P 02 4426 6170 M 0431 774 774

gerringong physiotherapy
southern coast pelvic health
physiotherapy and pilates
kiama physiotherapy

4234 4666

www.gerringongphysio.com
www.southerncoastpelvichealth.com

THE BOUTIQUE GYM

Personal Trainer Jen Miller

117 North Street,
Berry NSW 2535

☎ 0413 648 943
jenmiller65@hotmail.com



LOCAL • COUNTRY • INTERSTATE
Experience a New Level of Professionalism
Phone 04 2864 3557 or 4464 3557

Four Legged Friends

PET FEEDING SERVICE

For Horses, Dogs, Cats, Birds
& all other domestic pets

Megan White
dip in animal care
0407 407 328
whitewolf99@bigpond.com

Established: 1995

- FEEDING • EXERCISING • RUGGING
- a • MAIL • GARBAGE

www.fourleggedfriends.com.au



TRADES & SERVICES DIRECTORY

Vaughn's Lawn & Garden Service



- ✓ Local knowledge
- ✓ Professional service
- ✓ Fully insured

0408 863 776

www.vaughnsgardening.com.au

G.M. Ellison & Co. lawyers • conveyancers

Graham Ellison LL.B.

- Real Estate & Business Conveyancing
- Wills, Probate and Personal Arrangements

5 HOST PLACE BERRY

Ph: 0408 444 808

graham@gmellisonlawyers.com.au



For all your concreting & Landscaping projects
Call or text Ben on 0438 703 109

AISCERTIFIERS

FAST TRACK
BUILDING APPROVALS

SWIMMING POOL
COMPLIANCE CERTIFICATES

TONY LEWIS

0417 372 728 • 4421 0004

info@accreditedinspectionsservices.com.au

AR Contracting



Rural Fencing
Hay and Silage Contractor
All areas of Earthworks and Excavation
Private and Public Road Construction
Dam Construction

0422 282 766



**MICHAEL
BARRETT**
LICENSED BUILDER

FOR ALL YOUR SMALLER JOBS
DECKS, PERGOLAS, BATHROOM/ KITCHEN RENO'S
SMALL ADDITIONS AND EXTENSIONS
40 YEARS EXPERIENCE

FREE QUOTES 0408 217 637



YOUR LOCAL BUILDER
NEW HOMES • EXTENSIONS • RENOVATIONS

02 4421 8677 M: 0449 668 439

www.onestophomes.com.au

Life is better in a One Stop Home



MICHAEL HILL
PAINTER & DECORATOR

Quality Work Guaranteed

Domestic Commercial Industrial

ABN 95 969 204 488 Lic No 121389C

0402474569

Specialising In

- New/Old work
- Feature Walls
- Roofs
- Texture Coating
- Heritage



Colin Whitehurst
Painting and Decorating

Interior - Exterior - Heritage

Honest | Reliable | Qualified,
Insured | Advice | Preparation **0400 135 128**
FREE QUOTES

SUPPORT LOCAL BUSINESSES

ELECTRICAL CONTRACTOR

EEPS
Lic. No. 133674C

DOMESTIC & COMMERCIAL

Solar Power Installation
Home Automation Systems
Security Lighting
Pools & Spas
Hot Water Systems
Oven & Stove Repairs
Safety Switches
Smoke Detectors

Contact peter today!
0412 594 907 | 4464 1993

ENDEAVOUR ENERGY AUTHORISED LEVEL 2 SERVICE PROVIDER



MOUNTAIN ECHO
landscape & horticulture

environmental contracting, garden management,
landscape design & construction, permaculture design

Ryan 0409 743 828 & Katie 0424 236 235

www.mountainecho.com.au



AUTOMOTIVE SERVICE CENTRE

02 4424 0803

96 NORTH ST NOWRA

EUROPEAN SPECIALIST

SERVICE - REPAIRS - REGOS
ALL MAKES & MODELS



**Berry
Chiropractic**

~ Specialising in gentle,
low force techniques ~

SAFE, EFFECTIVE TREATMENT FOR:

- All ages; from babies through to the elderly.
 - Headaches/migraines
 - Back/neck pain
 - Postural problems
 - Whiplash
 - Scoliosis
- EFTPOS available
HICAPS now available

57 Queen Street • Phone: 4464 3414



Specializing in Private Road Construction
& Bitumen Seal

- Driveways
- Carparks
- Decorative driveways
- Fully Insured

Contact Office (02) 4464 1555

James 0416 269 744

TRADES & SERVICES DIRECTORY



Automotive | **Residential**
Commercial | **Industrial**

MOBILE 24/7 LOCKSMITH SERVICE

0498 770 088

www.jetlocksmiths.com.au

Master Locksmith | Security Lic #000101098



MOBILE SERVICE & REPAIRS

0414 800 359

* RIDE-ON MOWERS * TRACTORS & AG EQUIPMENT

* LOADERS * LIGHT TRUCKS * CARS & 4WD'S

* AG/QUAD BIKES & UTV'S * STATIONARY ENGINES



**All Creatures
Mobile Vet**

- Convenient pet health checks and vaccinations
- Compassionate euthanasia at home
- Complete range of Veterinary services
- Pick up and drop off service when your pet needs to visit our hospital
 - No call out fee
- Emergency service available
- Service area from Albion Park to Milton NSW

Personalised Veterinary care at home

(02) 4464 1899 www.allcreaturesmobilevet.com.au



- Solar quote, design, install, repair and maintenance
- Mains electrical connection
- Underground sub mains to building or structure
- Solar quote design and install
- Meter box upgrade with safety switched or three phase
- New house wire or remodeling
- Hot water install
- Outdoor lighting
- Fan install
- All your electrical needs

LOCAL ELECTRICIAN 0487 093 173

Licence Number: 270316C

**SUPPORT
LOCAL
BUSINESSES**



**Local Plumber
Fast & Reliable 24/7**

1300 792 082

www.curranplumbing.com.au

\$50 OFF

ANY SERVICE IF YOU MENTION THIS AD



AG & MECHANICAL



- All Mechanical Repairs
- Rego Inspections for Trailers, Motorbikes and Light Vehicles up to 4.5GVM
- Tyre Repairs & Replacements
- Log Book Servicing

02 4464 1125

88 QUEEN STREET BERRY NSW

FIND US NEXT TO THE SHELL PETROL STATION



ABN 80 621 680 859
MVRL57648

HERE IS HOW TO GET THE BEST KITCHEN,
VANITY, FURNITURE, TIMBER WINDOWS,
DOORS, FLYSCREENS AND JOINERY

Rybrook Joinery

CALL SCOTT OR MICHAEL

4422 4600



CHRIS MANN 0431 671 475

mmbuildingandconstruction@gmail.com

NEW HOMES | RENOVATIONS | EXTENSIONS | DECKS-PERGOLAS | CONCRETING

ABN 40 624 149 506 LIC. NO. 292587C



KANGAROO VALLEY

CALL BILL OR DEBBIE
0424 867 994 / 0401 759 241

info@surfelectrical.com.au

Like us on Facebook!

Review us on Google ★★★★★

AREAS OF SERVICE:

BERRY / KANGAROO VALLEY / CAMBEWARRA /
GERRINGONG / SOUTHERN HIGHLANDS

- Fully Insured • 20+ years experience
- Residential • Commercial • Industrial
- New Homes • Renovations & Extensions
- Maintenance • Repairs • Upgrades • Installations

ABN 70 845 107 241 LIC No. 253095C



Mary Pentecost

84 Queen Street Berry NSW 2535
email: wbpqueen84@hotmail.com

4464 2874



**MISS SPARKLES
SHOALHAVEN**
External House Cleaning

HOUSES FROM \$148

- ★ Environmentally Friendly
- ★ House/Driveway Packages
- ★ Removal of Cobwebs
- ★ Patios and Driveways
- ★ Mildew Treatment
- ★ Windows/Screens included
- ★ Commercial work
- ★ Seniors Discount

Phone Dennis for a free quote:
0407 642 256

Now Offering: Internal Window Cleaning &
Licensed/Insured Electrical Work (Lic No. 209514C)

PLUMBER DRAINER GASFITTER MINI EXCAVATION

**Marland
Plumbing Services**

Licence No. 72832C
ABN 43 571 877 557

Over 25 Years Experience in the Shoalhaven

Phone: 4480 2251 Mobile: 0412 044 135
marlandplumbing@iinet.net.au



**Southern
Tree Service**

- Qualified Arborist
- Qualified Horticulturist
- Tree care and maintenance
- Expert trimming and tree removal in confined areas
- Chipper • Mulch
- Advice on replacments
- Stump Grinding
- Fully Insured

Paul Gillen

Ph/Fax 4464 2822 • Mobile 0407 405 968

Ian's Interior Linings



★ All plasterboard & fibrous plastering

★ Commercial & Domestic

M: 0418 220 751

E: willey63@bigpond.com.au

Preparation is the key!



Restrictions for travel across NSW are easing and we are anticipating an influx of property buyers to visit the Berry region in the coming months. Now could be the perfect time to get your property on the market!

Despite the restricted movement of a large portion of the market in recent months, 2021 has been an amazing year for property sales in the region, both in terms of the number of sales and prices achieved. The relaxation of restrictions will ensure that this momentum will continue in the months ahead.

With over 50 years combined real estate experience between them, our agents **Tim McGoldrick**, **Ash McGoldrick** and **Nicholas Lyell** are trusted local experts, and the ideal choice to handle the sale of your property. Get in touch today for a full market appraisal and comprehensive advice on how best to take advantage of the current market.

The local experts



Tim McGoldrick
☎ 0414 157 794



Ash McGoldrick
☎ 0402 726 933



Nicholas Lyell
☎ 0401 658 450