



BERRY TOWN CRIER

PO BOX 202 BERRY NSW 2535

WWW.BERRYALLIANCE.ORG.AU

 FIND US ON FACEBOOK

NOVEMBER 2020 PRICE: \$3.00

UPGRADE TO QUEEN STREET IN BERRY

Page 3

THE NEW NORM FOR ROTARY

Page 7

BECOME A MEMBER OF THE BERRY RED CROSS

Page 10

THE BERRY MEN'S SHED ANNUAL SALE IS ON THIS MONTH – EVERYTHING MUST GO!

Page 6

BE BUSH FIRE READY THIS SEASON

Page 12

STAYING THE COURSE WITH BERRY SPINNERS AND WEAVERS

Page 17

VISIT YOUR LOCAL, COMMUNITY LIBRARY

Page 7



BERRY ALLIANCE INFORMATION



The Town Crier is produced by the Berry Alliance Inc.

The purpose of the publication is to communicate to the people of Berry about community activities and aims to share information amongst community groups, individuals and the community. A community that is well informed with a range of different opinions makes better decisions and that makes for an even better community that we can continue to be proud of.

Contributions are from the Berry Community who have news and information for our readers.

The opinions expressed in the Town Crier are not necessarily those of the Berry Alliance or of the Editors.

MEMBERSHIP

Membership of the Berry Alliance costs \$15 per annum and is open to Berry community groups registered with the Berry Alliance as well as individuals. To join please write to Berry Alliance, PO Box 202 Berry NSW 2535 or email: info@berryalliance.org.au

Editor's Note



The closing date for our DECEMBER issue will be Wednesday 18th NOVEMBER 2020 at 5pm. Please submit prior to this date if it is your first submission. Material can be submitted via e-mail to: towncrier@berryalliance.org.au

Phone 0428 037 572

Town Criers can be downloaded for free from www.berryalliance.org.au or our Facebook Page: Berry Town Crier.

Nancy Davies - Berry Town Crier

THE TOWN CRIER IS PUBLISHED MONTHLY, WITH A CIRCULATION OF 2,400 COPIES AS WELL AS ELECTRONICALLY BY EMAIL OR ON OUR WEB SITE

PRINTED BY **Berry Printers**
CONCORDE WAY BOMADERRY PH: 4422 3774

PRINTED ON RECYCLED PAPER



Become a Friend OF THE BERRY TOWN CRIER

BECOME A FRIEND OF THE BERRY TOWN CRIER AND RECEIVE:

- ▶ UPDATES
 - ▶ NEWSLETTERS
 - ▶ BREAKING NEWS
 - ▶ ELECTRONIC COPY OF THE BERRY TOWN CRIER EACH ISSUE
- COLOUR EDITION**



JUST EMAIL INFO@BERRYALLIANCE.ORG.AU AND GIVE US YOUR:

NAME:

TELEPHONE:

ADDRESS:

EMAIL:

Noise Abatement Rectification for Berry Bypass at South Western End of Berry

Kiama State Member Gareth Ward has announced that the State Government, through the RMS, that some work will commence shortly to add some sound walls to the Berry Bypass at the south western end of Berry to help rectify the sound problems identified.

This follows a large number of strong requests and submissions from local residents affected by the noise from the Bypass following construction.

The work includes sound barriers – a mix of clear and solid barriers. They will run along

the new highway on both sides for approx. 300 metres.

The work is expected to be completed in the second half of 2021 with some preparatory work due to commence shortly and the main construction work in the first half of 2021.

Rick Gainford for the Management Committee of the Berry Town Crier

This article was in our Friends of the Berry Town Crier Newsletter update 13-10-2020.

Become a Friend of the Berry Town Crier and receive updates and an ecopy of the Town Crier each edition (in colour).

Surf

ELECTRICAL

KANGAROO VALLEY

CALL BILL OR DEBBIE:
0424 867 994 / 0401 759 241

✉ info@surfelectrical.com.au

f Like us on Facebook!

Review us on Google ★★★★★

AREAS OF SERVICE:

BERRY / KANGAROO VALLEY / CAMBEWARRA / GERROA
GERRINGONG / KIAMA / SOUTHERN HIGHLANDS

- Fully Insured • Residential • Commercial • Industrial
- 20+ years experience • New Homes • Maintenance
- Renovations & Extensions • Repairs • Upgrades • Installations
- Switchboards • Safety/Maintenance Inspections • Troubleshooting

<https://surf-electrical-pty-ltd.business.site>

ABN 70 845 107 241 LIC NO. 253095C



BERRY CHAMBER OF
COMMERCE & TOURISM

Upgrade to Queen Street in Berry

The Berry of Chamber of Commerce and Tourism have finally met on site with the Shoalhaven Council's representative to discuss Council's proposed Queen Street upgrade and have been provided plans detailing the intended changes.

In summary, these will include:

- a reduced speed limit to 40kmph from Prince Alfred Street down to Albany Street and
- the construction of 2 raised pedestrian cross-ings, one near the NAB Bank (current pedestrian safety zone), and a second opposite 81 Queen Street, "This Old House" Building.

The proposed changes will prioritise pedestrian traffic and therefore significantly impact traffic movement in Berry as vehicles will no longer have right of way and will need to stop for each pedestrian seeking to cross the road.

Businesses located in the area from Prince Alfred Street to Albany and residents in the adjacent streets will be impacted once the changes are in place.

The Chamber is concerned that the changes will result in traffic flow along Queen Street becoming even more congested and the ability to park in Queen Street will be made even worse than it is currently. In addition, vehicles will start to use the quiet residential streets North and South of Queen Street to detour around the blockage, further impacting Berry residents' safety and peace.

There has been very little consultation by Council with our Members whose business will be impacted nor are we aware of any with the wider Community.

We are also unaware of any traffic monitoring that has been completed to allow modelling of the potential impacts of the changes on traffic movement in the centre of Berry.

Council is suggesting that construction on these may commence towards the end of this month.

If you have any feedback positive or otherwise it is critical to advise the Chamber (info@berry.org.au) and the Berry Forum (berryforum@hotmail.com) as soon as possible so that your feedback can be passed onto Council.

Berry Chamber of Commerce & Tourism
info@berry.org.au



To see a copy of the map that Council sent to the Berry Chamber of Commerce and Tourism go to: <https://local.berry.org.au/berrycares/>

There is a copy of these plans in the Community Notice Board (outside the Pharmacy) arranged by the Berry Chamber of Commerce.

There are also discussions ongoing on social media on this issue.



BERRY
DENTIST

Dr Paul del Solar BDS (Syd)

AVAILABLE FOR ALL ASPECTS OF GENERAL
AND FAMILY DENTISTRY
NEW PATIENTS WELCOME

P: 4464 1055 to make an Appointment
58 Queen Street Berry NSW 2535



**CAFE OPENS
DAILY FROM 7AM
BREAKFAST, BRUNCH,
LUNCH & AFTERNOON TEA**

Indoors and outdoor seating
Wheelchair access
Dogs welcome (on leash) outdoors
Off-street Parking
Bookings for small functions
Bookings and enquiries contact us at:

E: thethreepotsnsw@gmail.com
T: 0474 652 546
16 Coolangatta Road Coolangatta





Berry Community Preschool has just started Term 4, and we can't believe this will be our last term with some of our children before they head off to big school. We will miss them so much.

Our Preschool garden is looking beautiful and healthy. The grass is lush and very green. A big thank you to the families that came along and helped us at the Working Bee before the holidays. The garden is a vital part of our learning environment and we love to spend as much time as we can outside, especially with the warmer weather.

At the end of last term, the children enjoyed our Disco Days with some great disco moves and dressing up. Our very last day was celebrated with a sausage sizzle and a Teddy Bear's Picnic. Lots of gorgeous teddies joined us at Preschool for the day. What a fun way to end Term 3!



The Preschool is currently contributing to Pink Up Berry. We have decorated the outside of the Preschool and the children have helped to create decorations in pink.

Term 4 will be a busy and enjoyable term, with the children consolidating skills learned throughout the year, and many preparing for Kindergarten.



SCOTS' PRESBYTERIAN CHURCH, BERRY

All Welcome!!!

Service Time: Sunday 10am

Sunday School: Sunday 10am

Minister Rev Isaac Jung - 4464 1020

**Cnr Alexandra Street & Victoria Street
Berry**

*Our purpose is to
Love God with our heart, soul, mind and might
and to
Love our neighbour as ourselves.*

*Ordinary people worshipping an
extraordinary God*

www.berrypresbyterian church.net.au



Growing in faith, hope and love

Senior Minister Rev. Simon Chaplin

Worship Services

Sundays

- Traditional: 8:00 am.
- Contemporary: 9:30 am with Kids' Church. Great for families.

Bible Study Groups

- Women, men, and mixed groups.

Activities

- Knit with Love: 1:00 pm, Fridays.
- Card Making.
- Exercise Classes.

Visit us

St Luke's Church
68a Princess Street Berry
Phone 4464 1058
Email office@berryanglican.org
www.berryanglican.org



BERRY MOTORFAIR

2020 A SHOWCASE OF
CLASSIC, COOL AND
COLLECTIBLE CARS IN
REGIONAL PARADISE
IN SUPPORT OF
LIFELINE

Friends, families and car enthusiasts are invited to the inaugural Berry Motorfair on Sunday, 15th November. Set across ten acres of farmland, the event will be a community exhibition of classic, collectible and cool vehicles and include food trucks, live music and raffle prizes for all to enjoy. Entry to Berry Motorfair is via gold coin donation and attendees can peruse the likes of a Lamborghini Diablo, Brabham race car, Ferrari Testarossa, 1987 Mercedes 560SL and a 1968 SS Camaro.

Hosted by TV presenter Kate Peck, the Berry Motorfair will support and raise much-needed funds for Australia's leading crisis support and suicide prevention service, Lifeline. The devastating impacts of the Australian Bushfires and COVID-19 pandemic have taken an unprecedented toll on the mental health and wellbeing of all Australians. This year, Lifeline has experienced a 25% increase in calls and is now receiving a call from an Australian in crisis every 30 seconds. All monies raised from the Berry Motorfair 2020 will go directly to support Lifeline which expects to respond to well over one million requests for support this year.

"The Berry Motorfair will be a collection of cars and motorcycles that will make any motoring enthusiast go weak at the knees." says organiser of Berry Motorfair, Jordan

Tang. "From Italian exotica, Aussie muscle, German precision, track day specials, modified madness and priceless classics the Berry Motorfair will cater for all tastes. The cars will be the stars of the day alongside the folks at Lifeline Australia who do incredible work in the community. We are privileged to have them on board as our charity partner and look forward to welcoming all the locals at Berry Motorfair - it's going to be a fantastic day out for the community!"

The health and safety of all car owners and attendees of the Berry Motorfair remains a top priority. In line with current government COVID-19 guidelines, the Berry Motorfair will open and operate with comprehensive health and safety procedures, including practising social distancing, readily available hand sanitiser, guest check in's and adhering to outdoor event attendee limits.

For further details about Berry Motorfair or to learn more about how you can support and get your business involved, please visit: www.berrymotorfair.com or contact Jordan Tang on 0401838813.

The Berry Motorfair is held on Sunday 15th November (10:00am to 2:00pm) at 185 Strongs Roads, Jasper Brush NSW 2535. Follow Berry Motorfair on Instagram and Facebook using the hashtag #BerryMotorFair



**If you are thinking about suicide or are concerned that someone is at risk, help is available. Contact Lifeline on 13 11 14*

PROUDLY SPONSORED BY THE BERRY ALLIANCE AND BERRY TOWN CRIER



Berry Men's Bowling Club

The 2020 Challenge Pairs Championship has been finalised and over the next month play in the Challenge Singles, Triples and Mixed Pairs Championships will take place.

Bob Dunn and Rob Folkard took out the Challenge Pairs with a score of 23 to 17 from Barry Dunn and Col Agar. This proved to be a very close match, with brothers Barry and Bob Dunn being the opposing leads. This Championship was played on a handicap basis with Barry Dunn and Col Agar having a 5 bowl start due to their combined handicap and this aided them to get the score to a tie on three occasions, including the 4th last end. From this point Bob Dunn and Rob Folkard applied the pressure and won the 3 final ends scoring 6 counters which gave them the Championship.

During the pre-Christmas period social bowls will be played on a Wednesday and Saturday afternoon. Visitors and locals interested in a game are most welcome to try the game, bowls can be loaned if necessary, and bookings can be made by midday on day of play by contacting the Club on 44642995 or speak to any bowling member. The game of lawn bowls is noted as one sport that caters for all ages and is an ideal way to obtain useful exercise in very pleasant surroundings and mix with a friendly group of local bowlers.

Looking to rent space in Berry?

St. Luke's has just been renovated!

With three rooms to choose from, they offer:

- Air-conditioning/heating
- Free Wifi
- Folding tables and chairs
- A fully equipped kitchen
- Internal bathroom facilities
- On-site parking
- Plus Acoustic Batts in the main room

Secure your space today. Call 4464 1058 or email office@berryanglican.org

For additional information visit: www.berryanglican.org





SALE



Come along to the
Berry Mens Shed Inc
ANNUAL SALE

146 North Street, Berry

8.00am to 2pm

Saturday 7th November

- **100's of items covering a wide variety of goods**
- **ideal for Christmas gifts and all other occasions**
- **craft items, created new/recycled**

Berry Rotary Club breakfast bbq & real coffee!

Bring your money with you!

EVERYTHING MUST GO

- **Donations of saleable goods beforehand much appreciated**
- **Enquiries to the Shed on Tuesday and Thursday 4464 3956**

FOLLOWING COVID SAFE RULES.



Find us on Face Book

CREDIT CARD FACILITIES AVAILABLE

Berry Community Library

We saw some great borrowing happening during the school holidays. The Community Library has a lovely selection of children's books, both Fiction and Non Fiction.

A popular Australian author for adults is Chris Hammer. His two novels *Scrublands* and *Silver* have been very well borrowed and his new book *Trust* has just been released. We also have Australian author Jane Harper's three books and are eagerly waiting for her new book *The Survivors*. Other popular authors include Michael Robotham, Lucinda Riley and Kate Furnival.

Keep up to date with new things happening in the Community Library and book recommendations from our borrowers by following us on Facebook.



**Open Monday and Wednesday 1pm-4pm.
Tuesday, Thursday and Friday 10am-1pm**

**77 Albert Street
Opposite the IGA carpark
behind the Uniting Church**

**For more information contact
Janet on 0425 220 258**



BERRY CWA

Berry CWA recently held its Annual Meeting with the election of the new executive. Congratulations to Suzanne Garrett our new president. Two of our members received 20-year service badges at the annual meeting. This year continues to be challenging with the Branch seeking new ways of fund raising within COVID guidelines. Our funds are used to support local organisation including Shoalhaven Women's Refuge, Richard Campbell Foundation, Can Assist, Rural Education Scholarships along with our local Primary School and Preschool and many more. While our Branch has found it challenging raising funds, the organisations we support have found it even more difficult as many rely on organisations like ours for support.

In order to continue our support of local organisations we had had to think outside the square. This year has seen a number of new initiatives including our Helping Hand project, where members made regular phone calls to not only our more senior members who were isolated during COVID but also other isolated members of the community, just for a chat but sometimes to help them in other ways.

As COVID meant street stalls were not an option we moved to the occasional stall at the Farmer's Market on Thursdays but our biggest and most successful initiative has been to run a stall in our grounds when the Berry Sunday Markets

restarted in August. This has proven very successful for us and allowed us to recently donate \$1500 to the Shoalhaven Women's Refuge as part of CWA Awareness week – focused on domestic violence. We will continue our stalls running up to Xmas with a Christmas focus. So please come along and support the Berry CWA stalls on Sunday 1 November, Sunday 6 December, 79 Victoria St, and also our stall in Broughton Mall on Saturday 12 December.

We can be contacted for all aspects of CWA including membership craft, choir, book club etc. by contacting us via our Face Book page (Berry Branch of the CWA of NSW) or email berrycwasecretary@gmail.com.



Pam Barker(left) and Judy Rigg (right) presented with 20 year service badges by Jackie Longhurst (centre).

Berry Medical Centre 30 Seconds with Dr Lucie Stanford



Lucie is available Fridays. Bookings can be made online through our website www.berrymedicalcentre.com.au or by using the HotDoc App

How did you end up at Berry Medical Centre?

I grew up in the Illawarra area and my husband and I were keen to live somewhere semi rural and Berry ticked a lot of boxes for us. In 2002 we bought 3 acres of vacant land with a stunning view on Berry Mountain then shortly after this my husband set up a dermatology practice in Kiama and our first baby arrived. Our plans to build a sustainable house changed swiftly in 2003 when we took a sticky beak at the Old Manse that had come on the market in the Berry Village. We took a look and fell in love and we have lived there ever since! I have worked one day a week at Berry Medical Centre since 2006, when I returned to clinical work after the arrival of our second daughter.

How has COVID affected the way you work?

I found the outset of the pandemic the most concerning time. Seeing events unfold in places such as Italy was scary and I really thought that the "horse had already bolted" in Australia. I think that the Australian government and public health agencies have handled the pandemic incredibly well and I feel grateful that our case numbers have been relatively low. My clinical work had changed somewhat during the pandemic with some consultations being conducted over the phone or video and all face to face consultations I wear a mask and socially distance where possible. At the start of the pandemic we saw a drop in "routine" visits for preventative health such as Pap smears, but I think that this is returning "to normal" now. My main job is actually in medical education for the GP training program. COVID-19 has had a huge impact on how we deliver education to the doctors we train as it has moved from face to face to online. I have found this transition very challenging and I hope that we are able to resume face to face training for some of the key skills that we teach.

If you could travel to anywhere in the world right now, where would you choose?

Whilst we are contending with a global pandemic I am very content to stay close to home. We truly live in one of the most stunning parts of the planet and there are so many beautiful places on our doorstep.

What is your "spirit animal"?

A cat. I have two Tonkinese cats and they lead my dream life.

What is the new 'Norm' for Rotary

Covid-19 has changed the world we live in some say forever, but we will just have to wait and see.

Like all organizations and groups, the Rotary Club of Berry were forced to change the way we operate ... no face to face meetings, no major fundraising events, no youth development programs etc ... but plenty is still happening.

- We are back having weekly face to face meetings at the Berry Bowling Club ... albeit within social distancing guidelines.
- And starting November we are back running the ever popular 'chocolate wheel' at the Berry Markets.
- The National Youth Science Forum which this time will be conducted online is still going ahead. This program offers students about to go into Year 12 the chance to experience a wide range of Universities and careers in the sciences. There is a rigorous selection process nationwide and to be selected to attend is extremely competitive, and the Rotary Club of Berry is very proud to have successfully nominated and sponsor three students to the coming Forum.
- The Rotary Nature Play Park at Boongaree is well underway. It will include a wide range of attractions, be physically accessible, socially inclusive and welcoming for all young families. It's been 6 years since the original idea for the playground was adopted by the Club, and we should see it coming well and truly together by mid next year.
- Whilst our traditional major community events (New Years Eve Fireworks and Family Fun Night, Australia Day Breakfast, Celtic Festival, Small Farm Field Days) are still dependent on the relaxation of Covid restrictions, we are considering a number of alternate community activities that might be held in their place.

The Club is always welcoming new members and is happy to show interested people what being a member of Rotary offers.

If you would like to find out more, just give our President Haseena Tweddle a call on 0409 318 171 or visit www.berryrotary.org.au

We wish everyone to remain Covid-safe in these times.

The 'Rotary' Community Group signage at each end of town have been updated and reinstated in pride of place.



Rotary 'Peace Poles' stating "May Peace Prevail on Earth" in various languages are to be installed at both the Berry Public School and the Rotary Nature Play Park.



Member for Kiama Gareth Ward, Shoalhaven Councillor John Wells, Mayor Amanda Findley and Rotary Club President Haseena Tweddle at the official sod turning event for the Rotary Nature Play Park.



AToP's New Admin Coordinator



Last month we welcomed our new Volunteer Admin Coordinator to the team at A Taste of Paradise Farm. Lyn Mikes has been living in the Berry area for the last few years, and after seeing an article in the Berry Town Crier where we were seeking volunteers, she felt that she had the skills and experience which would benefit the charity's work with kids in need. Lyn has brought a wealth of knowledge and experience working in Administration which we know will be incredibly helpful for our charity and the young people we support. In September Lyn began training in the charity specifics and at the beginning of October she began working in our office 3 days per week. We are incredibly fortunate to have people like Lyn, who have skills and abilities join our team, to help our charity continue the invaluable work we do with kids at risk from the Shoalhaven and Illawarra. When you contact the charity, Lyn will be happy to talk to you about who we are and the ways that our one-on-one mentoring program supports kids at risk have hope for a better future.



PROUDLY SPONSORED BY THE BERRY ALLIANCE

www.berryforum.org.au

The Berry Forum

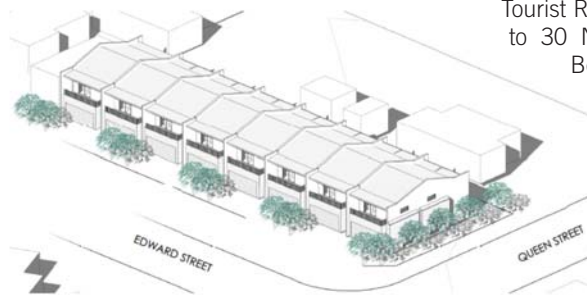
Proposed Multi Dwelling 'Terrace' in Edward/Queen St

Councillors voted unanimously to refuse the proposed rezoning and multi dwelling housing development at their Development Committee meeting. The applicant is expected to submit a revised application and we will inform the community if this occurs.

The Forum Committee had informed councillors of the views expressed by Berry residents, who were all opposed to the proposed development. Some of the issues raised related to –

- Poor design, out of keeping with village character and atmosphere. More appropriate for inner Sydney; low density housing retains character of the older part of town.
- Terrace housing is not an architectural feature of Berry and is not in keeping with the character of Berry.
- This is a narrow street, which is already busy with parents dropping off and collecting children from the preschool. It is frequently crowded with parked cars and a significant development would make keeping young children safe more risky.

Work to Start on Berry



Bypass Noise Walls

Preliminary vegetation removal and surveying will commence this month and major construction work will get underway early next year. The project is expected to be completed by August 2021.

The noise walls will be built using half solid and half transparent acoustic panels, as was the preference of the community, and will run for around 300 metres on both sides of the highway, south of the Kangaroo Valley Road overpass.

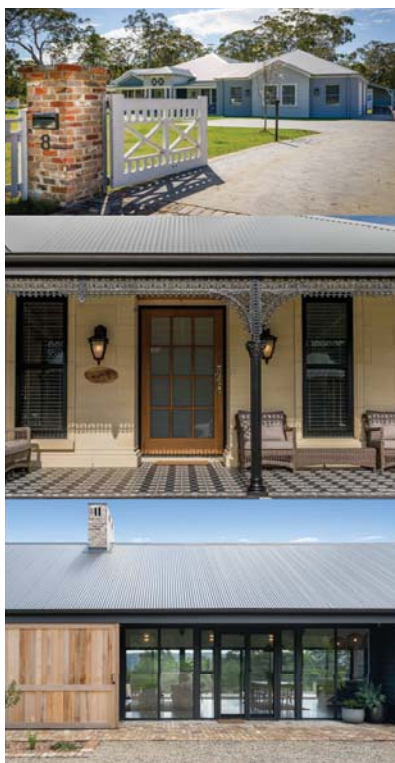
The structures will be included in the mounded areas that already exist on either side of the bypass. On the Windsor Drive side, the structure will be around 4.5m off the ground, while on the Huntingdale Park Road side, which is already considerably higher, the structures will be around 6.5m high.

Scheduled Road Closures in Preparation for L'Etape 2021

Council plan to carry out Tree Work identified as high risk to properties and road users in preparation for L'Etape cycling event planned for March 2021.

Work is to be performed on road sections from 6.30am to 5pm. Work on Cambewarra Lookout Road from 23 October to 6 November, Tourist Road Beaumont between 9 November to 30 November and Kangaroo Valley Rd Berry Mountain from 30 November to 18 December. These roads will be closed to the general public during works.

* Register at www.berryforum.org.au to receive the regular Newsletters sent to 1500 Berry residents



Looking to build your

forever home?



Shoalhaven's Custom Quality Home Building Specialists

A decade of award winning homes

www.harlorbuilding.com | 0468 790 210 | admin@harlorbuilding.com



the
power of
humanity



100 YEARS
PEOPLE HELPING PEOPLE
1914-2014

BERRY RED CROSS FUNDRAISING

Berry Branch collected for the Red Cross Beirut Appeal at the October Berry Markets at the Alexandra Street entrance and raised \$244.00. We thank the community for their generous donations. We will collect again at the December markets on both gates.

COMMUNITY NOTICE BOARD SIGNS

We thank the Rotary Club of Berry for adding Red Cross signs to the Community Noticeboards at the two entrances to Berry. We also thank Peter Crossman from Nowra Signs at Pyree who made the signs and very generously donated them to Red Cross.

CONGRATULATIONS

Jenny Edwards, our Zone Representative, presented member Margaret Walsh with her 10 Year Service medal. This is much deserved as Margaret has worked hard for our branch including being our current Secretary. Congratulations Margaret.



Margaret Walsh receiving her Medal



Red Cross sign for the Community Notice Board

BECOMING A MEMBER OR VOLUNTEERING

If you wish to find out about becoming involved with or volunteering with the Red Cross contact the Berry Branch of the Red Cross (see Community Groups page of Town Crier for contact details), the Nowra Red Cross Office (1800621433) in Graham St Nowra or go onto the Red Cross website.

WWW.REDCROSS.ORG.AU



EUROSTYLE®
SLATE IMPRESSION AND RUSTIC WOOD IMPRESSION EDGING



YOUR LOCAL
KWIK KERB®
OPERATOR IS:

DAVE BUCKLEY
0408 218 771

info@kwikkerbbybuckley.com.au

CALL NOW FOR A FREE ON SITE QUOTE!



71-77 Albert Street Berry

Come and join us

Sundays at 9.30

During COVID-19 shut downs

join us on Zoom

email berryuniting@gmail.com
for joining details

Minister: Rev Andrew Watts

0400 059 191

www.berryuniting.org



2/21 Quinns Lane, Sth Nowra



Mobility Aids

Lift Chairs

& More

PH **4422 8438**
scooterswholesale.com.au

Servicing the Berry District Since 1992



SOUTH COAST LIFE CHURCH

Introducing Sharayah Lardner

We are so excited to introduce you to Sharayah Lardner, the latest member of our team at South Coast Life Church. Sharayah is 25 and moved down from Sydney mid-September to take on a role with us ministering to and with our children and youth. Sharayah comes with experience working with Fresh Hope churches in the areas of admin and the running of their youth and young leaders camps. She considers herself a creative person, with a love of painting, reading and learning new instruments. She also loves being out in nature, especially the beach. Lucky for her we have some of the best beaches on the planet. When Sharayah was 15 she decided that she wanted to follow Jesus. He is her saviour, her friend and the one who gives her purpose, meaning and direction. It is also this relationship with Jesus that has led her to work with young people. "I have a passion for the next generation. I believe that God is calling them into who He has made them to be, now.... I think that they're our future leaders, our future pioneers and that God wants to be with them now, so that He can prepare them for that future that He has in store for them. And I want to be a part of that."

In Matthew 19:13-15, Jesus made it pretty clear that He not only valued children but that he expected them to be able to connect with him and make decisions to follow Him for themselves. At South Coast Life Church, we also value children and young people.



That is why we invest in them and run programs that are accessible and catered for them at whatever level they are at. On Sunday mornings at our 10.30 am service we run our Berry Kids program which caters for 1-year-olds through to 12-year-olds. On Friday nights, we run a great youth program

for those in High School. If you are a child or young person and would like to come along, you'd be most welcome. You can find out all of the details on our website; southcoastlife.org or send us an email hello@southcoastlife.org.



SOUTH COAST LIFE CHURCH

Bringing **Life through Jesus** to the South Coast and beyond
Formerly known as Berry Community Church

8 Schofields Lane Berry

Service times 9am, 10.30am & 5pm

Everyone is Welcome!

hello@southcoastlife.org 4464 2315

southcoastlife.org



BERRY PODIATRY CLINIC

- General Foot and Nail Care
- Corns and Callus
- Ingrown Toenails
- Foot, Ankle or Leg Pain
- Sports Injuries and Rehabilitation
- Walking/Running Problems
- Prescription Orthotics
- Diabetic Foot Checks

Home visit service also available.

(02) 42323513

Cnr Princess and Alexandra St, BERRY
Open Tuesday and Thursday

MARK RADIUM AND JACK MCGEE

The park at the foot of Victoria Street commemorates Mark Radium, a remarkable horse who was the High Jump Champion of Australia.

At less than 14.2 hands high (1.47 metres), Mark Radium and his rider Jack Magee formed an almost unbeatable partnership.

Born in 1911, William John (Jack) McGee grew up in Boughton Vale and inheriting equestrian abilities from Billy his father, Jack's affinity with horses was apparent from an early age. At the 1921 Royal Easter Show he won against older, more experienced riders in every jumping event he entered.

Jack's partnership with Mark Radium started in 1934 when Jack linked up with Bowral horse owner Fred Englebert. As the years progressed Jack and Mark Radium won major high jump events, becoming joint holders of the Adelaide Show High Jumping Record in 1938, clearing 7ft 3 ins (approx 2.21 metres) at the Melbourne Show and creating a world record of 7ft 8 ins (approx 2.34 metres) at the Albury Show.

After serving in WW2, Jack obtained ownership of Mark Radium and at the 1947 Royal Easter Show they won every high jump event on the programme- an incredible feat for a horse who was eligible, due to his size, for pony events. Then, apart from one defeat in 1949 due to the horse's illness prior to the Show, they won the main high jump event in Sydney every year until 1955.

Mark Radium was everyone's hero. He was smothered by lipstick from the kisses planted on his face at the Shows and legend has it that when Jack McGee was competing in the high jump at the Royal Easter Show, 'sideshow alley' closed until the winner was declared.

Then in 1955 after regularly attending the Royal Easter Show for 16 years, they made their farewell appearance. By this time Mark Radium was 23 years old and virtually blind. After failing the first 2 attempts, and with excitement mounting, the pair cleared a record 6 ft 9 ins (2.06m) at the final attempt, to the roar of the crowd. A roar which became a reverent silence when both their retirements were announced and they did their final victory lap.



Jack McGee riding
Mark Radium

Berry Museum

135 QUEEN STREET BERRY



www.berryhistory.org.au

 **bombo**

blinds | curtains | shutters | awnings



4237 8280 www.bombo.com.au

Visit our beautiful showroom at **7 Johnson Street, Kiama Downs** (near the IGA)

WE CARRY THE FABULOUS "BLINDS BY PETER MEYER" RANGE • ALL PRODUCTS COMPLY TO CORD SAFETY LAWS



Bush Fire and Your Home

PREPARE YOUR HOME AND PROPERTY FOR BUSH FIRES

These maintenance tips may help prevent burning embers destroying your house:

- ☐ Install metal gutter guards
- ☐ Repair damaged or missing tiles on the roof
- ☐ Install fine metal mesh screens on windows and doors
- ☐ Fit seals around doors and windows to eliminate gaps
- ☐ Enclose the areas under the house
- ☐ Repair or cover gaps in external walls
- ☐ Attach a fire sprinkler system to gutters

DID YOU KNOW
Not all homes can be defended - your safety is always the first priority.



Things to do around your house and garden:

- ☐ keep lawns short and gardens well maintained
- ☐ cut back trees and shrubs overhanging buildings
- ☐ clean up fallen leaves, twigs and debris around the property
- ☐ have hoses long enough to reach around your house
- ☐ if you have a pool, tank or dam, put a Static Water Supply (SWS) sign on your property entrance
- ☐ check that your insurance is adequate and up to date
- ☐ complete your Bush Fire Survival Plan available at www.rfs.nsw.gov.au.

In a bush fire many houses are destroyed through ember attack, when burning twigs and leaves carried by the wind land on or around the house. Even houses away from the direct path of the fire can be affected.

Look for the places embers could start fires - on the roof, under the floor and around windows and doors - and take action to prevent them.



PREPARE. ACT. SURVIVE. | BUSH FIRE INFORMATION LINE | 1800 679 737

© State of New South Wales through the NSW RURAL FIRE SERVICE 2012. E2



Meals on Wheels Berry

NSW Volunteer of the Year Awards

Two of our very hard-working volunteers, Noreen Doust and Marilyn Kellett were honoured to be nominated for this year's South Coast Senior sections for 2020.

They did not win top place but just to be Nominated was a great honour. They will continue to keep volunteering for Berry Meals on Wheels And thank their nominator for thinking of them.

Berry Meals on Wheels is continuing delivering meals; please ring if you or someone you know may need this service. Ring Michelle on 0409 599 133.



Our retirement community consists of sixty spacious villas beautifully presented over 7 acres of magnificent manicured gardens. Walking trails, putting green, swimming pool and community centre are just some of the fantastic facilities that make The Grange a special home.



22 Victoria Street, Berry | Ph: 1800 005 922 | www.thegrangeatberry.com.au

Community Groups

BERRY COMMUNITY GROUPS

Berry Alliance Inc. 0449 569 059
PO Box 202 Berry 2535
info@berryalliance.org.au
www.berryalliance.org.au
https://www.facebook.com/BerryTownCrier

Berry Alliance Town Crier 0428 037 572
PO Box 202 Berry 2535 www.berryalliance.org.au
towncrier@berryalliance.org.au

Australian Labor Party Berry 4464 2446
Shoalhaven Heads Branch. Meets 2nd
Wednesday each month, 6.30 pm Hotel Berry
secretarybshalp@gmail.com PO Box 474 Berry 2535

Australian Red Cross 4464 2479
Honorary Secretary - Margaret Walsh
21 Windsor Drive Berry - 1st Wednesday each
month at 2.00pm - Berry Uniting Church

Beaumont Rural Fire Brigade 0416 754 272
beaumontvrfb@gmail.com

Berry Chamber of Commerce & Tourism Inc.
PO Box 216 Berry 2535 4464 2126
info@berry.org.au www.berry.org.au

Berry Community Library 0425 220 258
berrycommunitylibrary@gmail.com

Berry Courthouse Conservation Committee
PO Box 218 Berry 2535 0458 369 266
functions@berrycourthouse.org.au
www.berrycourthouse.org.au

Berry Evening View Club 4464 1191
Secretary, PO Box 275 - sel4957@bigpond.net.au

Berry Masonic Village Auxiliary Inc 4464 1774
Mail: 42 Albany Street Berry NSW 2535

Berry Meals on Wheels 4464 1774
PO Box 221 Berry NSW 2535

Berry Men's Shed 4464 3956
146 North St Berry 2535. Tues and Thurs
berrymensshed@telstra.com

Berry RSL Sub Branch
PO Box 3307 North Nowra 2541
stuartchristmas@gmail.com

Rotary Club of Berry 0438 430 438
PO Box 81 Berry 2535 www.berryrotary.org.au
Email: berryrotary@gmail.com

**Conservation Committee for the Berry Railway
Station Precinct**
janetfingleton@bigpond.com 0418 651 787

Berry Community Library 0425 220 258
berrycommunitylibrary@gmail.com

Country Women's Association 0417 423 018
Berry Branch - PO Box 321 Berry 2535 -
2nd Friday each month at 12.30pm in the CWA
Rooms, Victoria Street. Contact Emily Boorer.

David Berry Hospital Auxiliary 4464 1774
P.O. Box 285 Berry 2535
bke25349@bigpond.net.au

Probus Club of Berry 0421 088 004 / 0424 342 337
PO Box 68 Berry 2535 berryprobus@gmail.com

Slow Food Berry to Jervis Bay Inc.
Marilyn O'Dowd 0416 018 977
slowfoodberry2jb@gmail.com www.slowfoodbjb.org.au

Zonta Club of Berry 0414 234 100
PO Box 302 Berry www.zontadistrict24.org
Barbara Smith bredgragesmith@gmail.com

ARTS

**Australian Decorative Fine
Arts Societies - Shoalhaven** 4464 2619
PO Box 269 Berry NSW 2535
shoalhaven@adfas.org.au

Berry & District Historical Society Inc 4464 3097
PO Box 153 Berry 2535 www.berryhistory.org.au
berrymuseum@bigpond.com

Berry Spinners and Weavers
Contact the secretary (Virginia)
berryspinnersandweavers@gmail.com

Berry Silver Band (est. 1897) 4465 1240
Kaye - kayecj@westnet.com.au - Masonic Band Hall

Knit with Love 0404 562 772
St Luke's Church Hall, 68A Princess Street,
Contact: Lyn Oades - terryandlyn@gmail.com

CHURCHES

Scots' Presbyterian Church 0405 139 031
Rev. Isaac Jung - isaac.jung@hotmail.com

Berry Uniting Church 4464 2904 / 0466 717 254
77 Albert Street Berry - berryuniting@gmail.com

South Coast Life Church 4464 2315
8 Schofields Lane Berry - hello@southcoastlife.org

Meroo Union Church 4448 6048
Corner of Boxells Lane & Princes Hwy,
Meroo Meadow. Contact Rae 4448 6048

St. Luke's Anglican Church 4464 1058
68A Princess St, Berry 2535 www.berryanglican.org
office@berryanglican.org

EDUCATION AND PLAYGROUPS

Berry Apple Users Group 0466 717 254
PO Box 103 Berry 2535
Berry Uniting Church Hall, 77 Albert Street
Email: berryappleusersgroup@gmail.com

Berry Computers for Seniors 4421 3270
PO Box 103 Berry 2535
Uniting Church Hall, 77 Albert Street Berry
berrycfs@gmail.com

Berry Community Pre-school 4464 1764
PO Box 143 Berry 2535
berrypreschool@bigpond.com
www.berrypreschool.org.au

Berry Kids' Club at Presbyterian Church
83 Victoria Street - Meet 2 Fridays per month

Mainly Music 0401 151 820
Berry Community Church Hall

GARDENING AND LAND CARE

Berry & District Garden Club 4464 1191
PO Box 122 Berry 2535
St Luke's Church Hall, Princess Street
Mary Seelis Secretary www.berrygardens.org.au

Berry Landcare 4464 2241
PO Box 422 Berry NSW 2535
berrylandcare@gmail.com

Brogers Creek Landcare 4465 1482
543 Wattamolla Rd Wattamolla
andrew.fitzsimons@det.nsw.edu.au

Gateway Community Garden 0423 267 957
141 Woodhill Mountain Road
Contact: Laurie Watson - wattos148@gmail.com

Berry Public School Plant Propagation Nursery
Lyn 02 4464 3911 - lyn-clark@outlook.com.au

RECREATION

Berry Bridge Club INC 4464 2742
PO Box 366 Berry 2535
bandlroberts@bigpond.com

Berry Camera Club 0488 031 961
Meetings on 4th Wednesday of Each Month
6:00pm @ Berry Bowling Club

SPORT

Berry Men's Bowling Club 4464 2995
PO Box 139 Berry NSW 2535 Club

Berry Tennis Club
PO Box 133 Berry NSW 2535
Email: berrytennis@hotmail.com

Berry Riding Club 0410 506 143
Berry Equestrian Centre
jasiiy@bigpond.net.au www.berryridingclub.com

Berry Women's Bowling Club
Berry Bowling Club. Contact Heather Fealy
4464 3624 or Pam Tulloch: 4464 2284

SPONSORED GROUPS

Shoalhaven Heads Surf Life Saving Club
www.headssurf.com.au
Phone: 0432 331 915 or info@headssurf.com.au

A Taste of Paradise 0490 060251
Supporting Youth In Need
PO Box 128, Berry info@atasteofparadise.org.au

SALT Ministries 4480 5028
Supporting those in need - 5-19 Birriley St,
Bomaderry - info@salt.org.au and facebook

Berry Farmers Market 0431 823 078
Berry Showground Cow Sheds - Thursdays
3-5pm - www.berryfarmersmarket.com.au.
Facebook.

**Berry Community Groups -
please register with
the Town Crier before
the October Town Crier cut-off**

If your group is yet to submit your registration renewal form please do it now as we can no longer accept submissions from groups who have not updated their details. There is a new, clearer form so please email info@berryalliance.org.au to receive a copy.
Community members will also see a new category called "Sponsored". These are the groups that the Berry Town Crier has agreed to sponsor on an ongoing basis.



Berry Alliance and Town Crier Management Committee

EMERGENCY 000

Police Assistance Line (Non-Urgent Police Reports) 131 444
Berry Police 4464 2175
Fire & Rescue NSW 4464 1008 or 000

Rural Fire Brigade (Broughton Vale) 4464 1522
SES For Emergency Help in Floods & Storms 132 500
Ambulance - always call 000

– Holly Landgren –

LIVING WITH COVID-19: We are fortunate to see numbers of new infections dropping in NSW. Nevertheless, the resumption of local tourism can make it difficult for vulnerable members of the community to safely shop and access services. Hand washing (or using hand sanitiser) remains a recommended strategy and wearing a mask when social distancing is not possible. While priority for PPE should be given to those working on the frontline, there are washable/reusable masks for sale online, or you can make your own. Charities and local community groups are making/selling masks, so if you do not sew you can show your support by purchasing locally made masks. Check our facebook page for further information and links to mask-making tutorials on Youtube.

SUSTAINABLE SHOPPING:

- The local IGA has been fantastic in keeping us supplied with essentials; if you need home delivery please call 4464 1239 to set up an account. Orders placed by 12.00 pm will be delivered after 2.00 pm on the same day.
- The farmers market continues on Thursday afternoons; hours are 3.00 pm to 5.00 pm. The organisers continue to do a great job of setting up the space to allow for responsible queuing. Please remember that there are no activities for children; it's a matter of shopping and going. The Berry Farmers' Market has a plastic-free policy, so you need to take your own bags.

KEEP UP TO DATE: Visit local.berry.org.au/berrycare/ for updated news, as well as facebook groups Berry Town Crier, Berry Community Facebook Group, and Berry Community Noticeboard.

- Check with your local cafe; some cafes are now accepting Keepcups and other reusable cups for take-away coffee. If your local cafe doesn't, and you feel strongly about adding to landfill by tossing out single-use cups, ask around and find an alternate business.

SUMMER APPROACHES: With warmer weather comes another bushfire season. Last year, Berry residents were more fortunate than some of our south coast neighbours. If you haven't already downloaded the Fires Near Me app, it's a vital tool to keep up to date with any nearby fire threats. Another valuable resource is the ABC emergency service. Access the web page abc.net.au/news/emergency/about/ to find tips to be well prepared.

WASTE DEPOT AND RECYCLING: The buy-back centre at the depot is now open both Saturday and Sunday (except for public holidays) from 8.00 am to 12.00 pm. The depot is open Friday to Monday, 8.00 am to 4.00 pm. The depot accepts the following items for free, to be recycled: scrap metal; electronic waste; clean (white) polystyrene; car and household batteries; smoke alarms; lightbulbs and fluoro tubes; motor and other oils (up to 20L); oil-and water-based paints (up to 20L); fire extinguishers; and gas bottles. If you commercial quantities of chemicals requiring correct disposal call the Environment Line on 131 555 for information.

Sustainable BERRY

Berry Sustainability - Including Planet Ark National Recycling Week 9-15 November and Take Away Coffee

Please see these initiatives from Planet Ark and take any action you can to support the push for a more sustainable town.

The Berry Alliance and Berry Town Crier have been supporting and encouraging "Sustainable Berry" for many years now. Giving away cloth shopping and cooler bags as well as "Keep Cups".

Please also see article regarding using your own Coffee Cups at take away shops in Berry.

Sustainability and Takeaway Coffee

The Berry Alliance has been working hard toward a Sustainable Berry over many years and that has included distributing cloth bags and then cooler bags to reduce the impact of single use plastic bags. We also distributed free Keep Cups and encouraged the use of your own reusable cups for takeaways to save on disposal, single use coffee cups. We are continuing that aim still.

The take up and use of Keep Cup style reusable coffee cups was going well with a steady increase and then earlier this year because of the Corona 19 Virus pandemic their use was set right back when coffee shops were understandably hesitant to use them. Happily, there is now a resurgence of their use and our environment will continue to benefit. Please always provide a clean reusable cup when you order.

NOVEMBER 2020



This National Recycling Week we're going beyond the bin

Planet Ark's National Recycling Week returns 9-15 November with the theme 'Recovery – A future beyond the bin'. There are lots of ways you can get your workplace involved, including a fun trivia night to test your recycling knowledge (coming soon)!

The Town Crier is producing a list of Berry Coffee vendors who allow use of your own reusable cup and publishing it in the next few editions of the Berry Town Crier so you, the consumer, can know where they can use your own cup.

Here is a list of these vendors following a quick survey in town.

It is not an exhaustive list and **if you sell Take Away coffee in Berry and accept these cups please email us and we can include your business in future publications.**

info@berryalliance.org.au

Figbird Café & Deli
Hotel Berry
Il Locale Café
iv coffee

Jetz
The Berry Chocolatier
The Emporium (Opening soon – 2nd half of October)
The Hungry Monkey

Rick Gainford for the Management Committee Berry Alliance and Town Crier

www.berryalliance.org.au



Australian Circular Economy Hub to launch November 24

We are excited to announce the Australian Circular Economy Hub will launch 24 November 2020, acting as a leading source of information, education and resources on the Australian Circular Economy. Sign up to the newsletter for updates.

DEVELOPMENT APPLICATIONS AND DETERMINATIONS



Here is a list of the most recent Shoalhaven City Council Development Applications and Determinations since the list was produced in the Berry Town Crier – October edition.

The information on how you can see details and follow these applications, make submissions and see the determinations and details of any conditions applied is in the Town Crier each month. Go to: <http://www3.shoalhaven.nsw.gov.au/masterviewUI/modules/ApplicationMaster/Default.aspx> Development Application Tracking.

APPLICATIONS

DA20/1938 - 11-9-2020 - Dwelling Alterations and Additions - 81A Jorgenson Lane, Bellawongarah.
DA20/1972 - 18-9-2020 - Demolition and Replace Animal Nursery Structure with New Shed - 35 Alexandra St, Berry
DA20/1956 - 16-9-2020 - In-Ground Swimming Pool - 308 Strongs Rd, Jaspers Brush
DA20/1966 - 17-9-2020 - A-Board Advertising Sign - 29 Strongs Rd, Jaspers Brush
CD20/1484 - 24-9-2020 - In-Ground Swimming Pool - 5 Kangaroo Valley Rd, Berry
SF10838 - 25-9-2020 - Strata Title Subdivision of Existing Detached Dual Occupancy - 1 Hitchcocks Lane, Berry.
CD20-1500 - 26-9-2020 - Demolition of Dwelling - 40 Queen St. Berry.
CD20/1501 - 26-9-2020 - Dual Occupancy (Two Storey Attached 2 New Units) - 40 Queen St, Berry.
CD20/1510 - 26-9-2020 - In Ground Swimming Pool & Spa - 5 Brangus Cl. Berry.
CD20/1500 - 26-9-2020 - Demolition of Dwelling - 40 Queen St. Berry.
CD20/1501 - 26-9-2020 - Dual Occupancy (Two Storey Attached 2 New Units) - 40 Queen St. Berry.
CD20/1510 - 26-9-2020 - In Ground Swimming Pool & Spa - 5 Brangus Close, Berry.
DA20/2013 - 1-10-2020 - Single Storey Dwelling, Detached Carport & Conversion of Existing Dwelling to Tourist Accommodation - 80 Moeyan Rd, Berry.
DA20/1525 - 1-10-2020 - Detached Shed - 100 Parker Cr, Berry.
CD20/1527 - 2-10-2020 - Demolish & Replace Detached Garage - 79 Kangaroo Valley Rd, Berry.
DA20-2014 - 1-10-2020 - Tennis Court, Swimming Pool & Spa Ancillary to Dwelling & Tourist Cabins - 65 Grahams Rd, Merroo Meadow.
CD20/1529 - 7-10-2020 - Single Storey dwelling - 92 Parker Cr. Berry.

DETERMINATIONS

DA20/1584 - Approved - 9-9-2020 - Single Storey Dwelling - 53 Turners Lane, Jaspers Brush.
DA20/1693 - Approved - 16-9-2020 - Attached Dual Occupancy - 28 Parker Cr. Berry.
SF10826 - Approved - 17-9-2020 - Strata Title Subdivision - 3 Tigman St, Berry.
DA20/1855 - Approved - 15-9-2020 - Deck, pergola,, retaining walls & in ground swimming pool - 21 Wattamolla Rd, Berry.
CD20/1484 - Approved - 22-9-2020 - In Ground Swimming Pool - 5 Kangaroo Valley Rd, Berry.
DA20/1634 - Approved - 25-9-2020 - Two Storey Dwelling - 41 Connors View, Berry.
DA20/1888 - Approved - 25-9-2020 - Two Storey Dwelling, Driveway & Landscaping - 18 Tressider Cl, Berry.
DA20/1639 - Approved - 21-9-2020 - Detached Habitable Rooms with Storage & Basement - 356 Woodhill Mountain Rd, Berry.
CD20/1525 - Approved - 30-9-2020 - Detached Shed - 100 Parker Cr. Berry.
DA20/1658 - Approved - 30-9-2020 - Single Storey Relocated (2nd hand) Dwelling - 8 North St. Berry.
DA20/1910 - Approved - 6-10-2020 - Demolition of Dwelling - 275 Agars Lane Berry.

BROUGHTON VALE / BERRY RURAL FIRE BRIGADE BUSH FIRE DANGER PERIOD AND FIRE PERMITS

A Fire Permit is required for burning activities during the Bush Fire Danger Period in Rural Fire districts and at all times in Fire and Rescue districts around the state. Fire Permits help ensure fire is used safely and minimise the danger to you, your property and the community.

- Just because it's the Bush Fire Danger Period doesn't mean you can't use fire - but there are restrictions to ensure fire is used safely.
- Getting a permit is free and easy. Contact your local Fire Control Centre or for FRNSW fire permits go to the FRNSW website.
- There are heavy penalties if you don't follow restrictions or rules.

The key things to remember:

You need a fire permit if it's the Bush Fire Danger Period.

At least 24 hours before burning, you must notify your local Shoalhaven RFS Fire Control Centre (4424 4424) of your intention to burn.

You must also notify any adjoining neighbours (including those separated by a road, lane or waterway) at least 24 hours before burning.

You should always check that there is no Total Fire Ban.

Heavy penalties apply if you don't follow restrictions or rules.



For more information go to <https://www.rfs.nsw.gov.au/fire-information/BFDP>

Staying the Course with Berry Spinners and Weavers



The challenge Covid 19 has posed for community organisations like Berry Spinners and Weavers has been immense. Unable to continue meeting together, our initial tactic was to postpone everything. We postponed the AGM, the sales we'd planned, our business meetings, our community commitments, everything except our own creative practice. We hoped continuing at home, alone, would be enough.

We were wrong. The purpose of our organization has always been to learn from each other. Our individual practice lacked the important stimulus provided by the breadth of knowledge our members share as a whole. So we turned to social media. If we could not meet in person, email would have to play a more prominent role. We maintained some momentum by reviving our underused Facebook pages and encouraging members to discuss their work and share photos as projects were finished, along with other online information likely to prove useful for members. Once permitted, small informal groups began to meet in individual homes, and simply as friends.

Recently, with access to the Berry School of Arts restored and our current Covid 19 plan firmly in place, we have resumed our weekly meetings. We've had time to plan new approaches to how we share skills within the group. A growing sense of optimism is emerging as more diverse groups again share their ideas. We are on track to resume, post Covid, stronger and more energetic than ever. There's a krokbragd rug on the floor loom, a double weave sampler on the table loom, and carding and spinning is in progress. While the end of Covid is not yet in sight, we are now equipped, and more than ready, to stay the course.



NOVEMBER 2020

Berry & District Garden Club News



SECRETARY MARY SEELIS 4464 1191 VISIT US ON www.berrygardens.org.au

What a year! Our members have managed to stay safe and healthy during these difficult times. We garden on, with the best seasons for some time for our Camellias and Grevilleas, in particular. The Club too continues activities with regular newsletters, welfare checks, and responsible working bees. Newly-elected President, Stephen Buzacott, is maintaining momentum streamlining proceedings, compliance and record-keeping.

One group labours hard at our new community park at the end of George Street. Go for a wander and you'll see the courtyard in front of the impressive, new pergola taking place. The maples are in full colour, Waratahs are blooming for the first time, more planting is in place. The Red Cedar is settling in within its sandstone setting. As the CV19 restrictions ease, we are ready to open the park, officially, in December, obviously adhering to all guidelines.

The propagation team has so much healthy stock, due to the cancellation of our Gardens Festival and the Small Farms Field Days. We have initiated a pop-up stall at the Sunday Markets, near the playground. Ask advice of our masked workers as you browse the wide variety of very reasonably-priced standard and speciality plants.



We are planning an end-of-year Christmas picnic as our next membership function. Our virtual numbers are flourishing and we are all itching to get together in person again. Instagram and Facebook contributions are a welcome source of community.

A very proud moment came with the release of members Peter Milthorpe and Hazel King's fantastic book TREES OF HISTORIC BERRY. It is not just a valuable reference for 218 of the evergreen and deciduous growing in the parks and gardens of the town, but is a visual reflection of the amazing variety of trees in Australia. trees of historic berry. com \$69.95 + \$15 p&p.

Our website, berrygardens.org.au, contains information concerning the club, upcoming events, membership matters and gardening advice.

 CHECK OUT OUR FACEBOOK PAGE ALSO

Our motto: *Friendship through Gardening.*

Secretary, Deb Wooster, welcomes enquiries on 0432 449 364, or info@berrygardens.org.au

BERRY TENNIS CLUB

PO BOX 133 Berry NSW 2535 Email: berrytennis@hotmail.com



The Club held its AGM during October. We had social distancing measures in place and held the meeting outdoors.

All office bearers were re-elected for the coming 12 months. Special thanks go our Secretary – Lee Healey and Treasurer – Angie Strong for their tireless work in managing the Club and its finances.

We have had an increase in membership over the last 12 months. Tennis is one sport that people have been able to continue to enjoy during our current restrictions, as you are naturally "socially distant" during play. Berry Tennis Club has implemented the Covid-safe guidelines put out by Tennis NSW.

The courts are available for hire by Club Members and the general public. We also welcome new members at any time. Members of the Club get the benefit of free court hire.

Court hiring details are on www.berry.org and the Club sign at the tennis courts on North Street.

For enquiries about membership, comps, social tennis or events you can always email: berrytennis@hotmail.com.

Martin Aicken - President - Berry Tennis Club

www.berryalliance.org.au

The Town Crier - Page 17

PINK UP BERRY 2020

A HUGE THANK YOU TO THE BERRY COMMUNITY & BUSINESSES FOR SUPPORTING PINK UP BERRY 2020. IT HAS BEEN A VERY DIFFICULT YEAR TO RAISE FUNDS, AS MOST FUNCTIONS WERE CANCELLED DUE TO COVID-19 RESTRICTIONS, BUT WE HAVE STILL MANAGED TO RAISE WELL OVER \$20,000 AS AT THE 14TH OCTOBER!!

We had 60 businesses registered, who all made a donation to be part of Pink Up Berry, these donations ranged from \$20 to \$1000 - with a total of \$4380 raised!

Our street stall was a huge success and raised over \$4000 - Thank you to all that supported and donated!

Raffles are proving very popular with 5 different raffles going- Major sponsors of our raffle prizes are Homemakers South Nowra, Berry IGA, Haven & Space, Berry Farmers Market, So Lovely & Nic Ware Hair.

The Berry Donut Van has been giving out pink donuts for every donation made to Pink Up Berry and at the time of going to press had already raised over \$2000!

Hedgehogs Coffee Shop have been serving pink rosewater scones and donating \$2 from every Devonshire tea sold during the month of October - Thank you Kerry & Van!

So Lovely are donating 30% of all pink items sold during the month of October.

Al Bramley's Pinked Up hair is proving very popular and lots of donations are being made.

The winner of the Pink Up Your House Competition was: Narelle Barry

Runners Up were:

Di Brandon

Liz Harris

Ann Foreman

Kaylene Saville

The winner of the Pink Up Your Business was: Berry Quilt & Co.

The prize sponsors were: Goldfish Toys, So Lovely, Berry IGA & Berry Bowling Club
A huge thank you to Sandy Bramley who gave us a section of her Berry Barnlet shop for the past few months where we have raised several thousand dollars selling goods!

Thank you to all our volunteers - so many have helped in different ways & our committee are deeply grateful, let's hope next year will be a bit more normal and together we can make a difference to help support those experiencing breast cancer, by raising funds for the McGrath Foundation.

Don't forget to check out our Facebook page Pink Up Berry, for the most up to date info and the direct link to our fundraising page!

Warm Regards,

Deb Woolford

Pink Up Berry Committee Chair




PROUDLY SPONSORED BY THE BERRY ALLIANCE AND BERRY TOWN CRIER



PINK UP YOUR TOWN

DON'T FORGET TO FILL UP YOUR REUSABLE BAG AT THE



BERRY FARMERS' MARKET

HELD EVERY THURSDAY, AT THE COW SHEDS BERRY SHOWGROUND, 3 PM - 5 PM.

FRESH LOCAL PRODUCE AVAILABLE, ENTERTAINMENT FOR ALL THE FAMILY AND MUCH MORE.



PROUDLY SPONSORED BY THE BERRY ALLIANCE TOWN CRIER

Town Crier November Deadline for Advertisers 18 NOVEMBER AT 5 PM

DISPLAY ADS

1 COLUMN

Single rate = \$110 or

Repeat rate = \$297 (\$99 x 3 issues)

Dimensions: 10cm high x 6cm wide

2 COLUMN

Single rate = \$143 or

Repeat rate = \$363 (\$121 x 3 issues)

Dimensions: 10cm high x 12cm wide

3 COLUMN

Single rate = \$176 or

Repeat rate = \$495 (\$165 x 3 issues)

Dimensions: 10cm high x 18.5cm wide

FULL PAGE

Single rate = \$363 or


Repeat rate = \$900 (\$300 x 3 issues)

Dimensions: 27cm high x 18.5cm wide

***Repeat rate applies to 3 or more issues with no changes and one invoice to be paid up front.**

ADVERTISEMENT

Working Hard and Getting Results for Berry



Gareth WARD MP
Member for Kiama

02 4232 1082 02 4232 3577

Kiama@parliament.nsw.gov.au

garethwardmp.com.au

Authorised by Gareth Ward MP, 102 Terralong Street, Kiama NSW 2533.
Produced using parliamentary entitlements.



Forest Reserves, Remnants and Regrets

Berry is known as the Town of Trees, a reputation based on mature planted trees in street-scapes, gardens and parklands. During the nineteenth century however, many observers reported the grandeur and beauty of its surrounding native forests, albeit with resignation that these would inevitably make way for cleared agricultural fields

In 1887, a 'Broughton Creek' correspondent for the Reporter and Illawarra Journal, made this observation:

church. The native forest, which is here of a very beautiful character, forms an admirable background to these establishments. It is a pity that it should ever be cleared away from such places; and if the lord of the manor were infected with my tastes, he would dedicate an area, say, of 50 acres as a town park, in which the fine growth of the native forest should be carefully preserved. The other churches, Anglican, Roman Catholic and Wesleyan

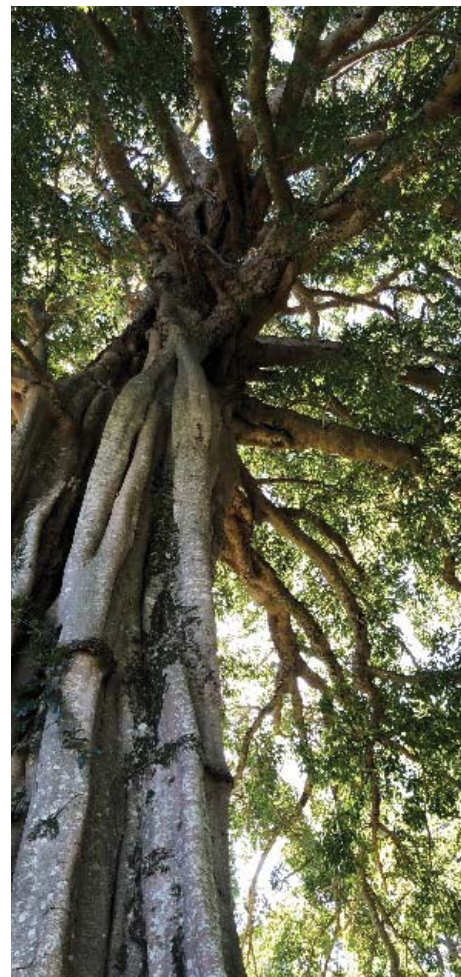
(14 Sept 1887)

Imagine, a 20 ha native forest reserve in the town of Berry, three times the size of the Showgrounds. It was a suggestion in character with the times. Just eight years earlier, NSW had dedicated the world's second National Park (now Royal National Park), and throughout the 1880s the seeds of our current conservation estate were created by the dedication of small recreational forest reserves such as at Fitzroy Falls (1882), Belmore Falls (1886), and Minnamurra falls (1887). These anticipated future National Parks, such as the Moollatoo Primitive Reserve in 1938 (Morton National Park) and Buddaroo National Park (1986).

It is a regret in hindsight that the Berry family were not also 'infected with a taste' for the district's wild forests and set aside a 'preserve'.

The original Berry Forest had a tall and continuous canopy and probably comprised a mix of rainforest (Brush) in wet areas, and drier Eucalypt communities elsewhere. Like all of the Illawarra low-land forests, the axes have left only traces.

A small remnant of canopy Eucalypts, survive at the eastern end of Schofields Lane and isolated strangler figs remain along Bundewallah Creek. These started life high in a long-gone forest canopy, at least 30m above the ground. A visit to the 33m high Deciduous Fig at Mount Vista Close Reserve still evokes these disappeared forests.



Summer flowering trees for every sized garden



PLANT PROPAGATION NURSERY

During summer, **Grey myrtle** (*Backhousia myrtifolia*), **NSW Christmas bush** (*Certatapetalum apetalum*) and **Coachwood** (*Ceratapetalum gummiferum*) will flower profusely and bees will be attracted to feed and pollinate for several weeks.

Grey myrtle is a small, hardy, attractive bushy tree that can be kept pruned as a shrub or grown as a container plant.

The flowers are creamy white with fluffy stamens.

When the petals fall, white sepals in a star shape remain.



Sepals of Grey myrtle

NOVEMBER 2020

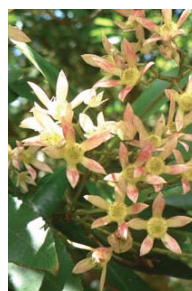
NSW Christmas Bush is a hardy bushy shrub or small tree.

Coachwood is a tall tree suitable for larger gardens. The small bright red star shaped clusters of sepals of Christmas bush and Coachwood are sometimes mistaken for petals.

When the flowers of Grey myrtle, Christmas bush and Coachwood die, a tiny nut containing a seed is visible in the centre of



Sepals of NSW Christmas Bush



Sepals of Coachwood

the surrounding sepals which persist after the petals have fallen.

The seeds will be ripe for collection when the sepals turn dull brown and become brittle in late summer.

The similarity of the seeds of these plants means that the propagation technique is the same.

METHOD OF PROPAGATION

- Sprinkle the sepals onto damp seed raising mix and cover lightly so the sepals and seeds won't blow away.
- When seedlings are large enough to handle, prick them out and plant them into individual tubes.

PLEASE NOTE NEW NURSERY HOURS DURING SCHOOL TERM:
Wednesdays and Thursdays 3.15 - 4.30pm.

Growing Plants • Growing Community

The Town Crier - Page 19

www.berryalliance.org.au



DIRECTOR/SALES
Jacqui Crapp
0429 104 011

Raine & Horne®

SOLD!!!



SALES
Mira Edwards
0414 247 863



SALES
Luke Tancred
0435 283 299



SALES
Larni Mulry
0403 726 596



PROPERTY MANAGER
Tracey Hain
4464 1300

“KERSEYDALE” BROUGHTON VALE

Raine & Horne Berry
2/65 Queen Street
BERRY NSW 2535
P: 02 4464 1300
www.rh.com/berry





**45 Prince Alfred Street
Berry
SOLD!**



**103 Kangaroo Valley Road,
Berry
SOLD!**



**DIRECTOR/SALES
Jared Cochrane
0404 210 824**



**GENERAL MANAGER
Emma Cochrane
0422 163 923**

**Currently we have many pre-qualified
buyers looking to purchase in Berry
and surrounds.**

**If you are looking to sell,
please give us a call today!**



**SALES
Alex Cochrane
0412 081 600**



**ADMINISTRATION
Leanne Faassen
4464 1300**



**120 North Street
Berry
SOLD!**



**49 George Street,
Berry
SOLD!**



**ADMINISTRATION
Joy James
4464 1300**



Raine & Horne Berry
2/65 Queen Street
BERRY NSW 2535
P: 02 4464 1300
www.rh.com/berry

belle PROPERTY

With all of the uncertainty caused by the COVID-19 pandemic, one thing that I am certain about is that now is the ideal time for real-estate in the Berry Region. The stereotype is real! People are looking for an escape from the city and the lack of stock we have available at the moment, is a formula for incredible selling conditions and results. You would be amazed at some of the prices we are achieving in both on and off the market sales.

The buyers age groups are more varied than usual and there is a desire for all dwelling types. Most of our current buyers are cash buyers meaning bank valuations are not involved and the process is smooth sailing.

With the increase in online activity our marketing reach is expanding by the day and we are attracting buyers from the city and beyond. If you have been considering selling your property now is the time to take action, contact our office for an obligation free appraisal or if you have any other queries, we may be able to assist with.



Nicholas dale
PRINCIPAL



KANGAROO VALLEY 28 Carters Road
'SPRING ROCK'

4 4 4 1.01

SOLD \$3.3M

Nick Dale 0419 425 166
Kylie Poole 0437 374 788



KANGAROO VALLEY 45 Cavan Road

CAMP DAVID

- Stunning and private 2.5 acres, close to town with pristine manicured gardens
- Stunning mountain views and Tanners creek flowing through the property
- 3 dwellings with 6 bedrooms, 4 bathrooms and multiple living areas
- All the extras including a sparkling in-ground pool & tennis court
- Large rumpus with potential to be an in home gym

6 4.5 8 2.5

FOR SALE CONTACT AGENT

Nick Dale 0419 425 166

Kylie Poole 0437 374 788



COMPETITION TIME

WIN 1 of 2 Family passes to Jamberoo Recreation Park

To enter - like and share Belle Property Berry on Facebook and Instagram and tag your friends. The 2 people with the most tags win. Winners announced via Facebook 1st December 2020

belle
PROPERTY

Belle Property Berry
122 Queen Street
Berry NSW 2535
T 02 4464 1636
www.belleproperty.com/berry

belle
PROPERTY

REMEMBRANCE DAY SERVICES TO GO AHEAD IN OUR REGION ?

The State Government has announced (14-10-2020) a one-off exemption to the Public Health Order that increases the current restrictions from 20 people to 100 people, to gather at community war memorials, provided they adhere to social distancing measures and have a COVID-19 Safety Plan in place.

This means that groups of up to 100 people will be able to gather for Remembrance Day services in our region after the approval of a one-off exemption from COVID-19 restrictions.

The State Government spokesperson said "while some of our larger commemorations won't look the same as in past years, this exemption means smaller services can be held in all local communities across NSW.

"Australians have paused to reflect and pay tribute on the 11th hour of the 11th day of the 11th month since 1918, so this is welcome news for our veterans community."

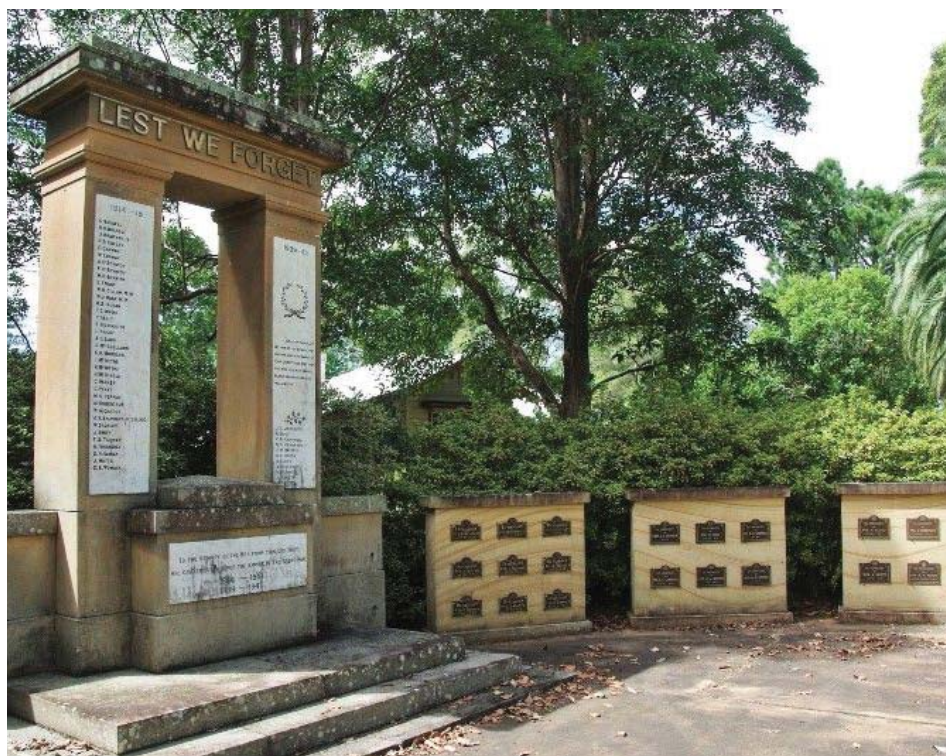
The exemption is in place for Remembrance Day Services held before 12 November.

"With this year's Anzac Day commemorations cancelled due to the pandemic, it is particularly meaningful for the veteran community to see Remembrance Day gatherings taking place," said RSL NSW Acting President Ray James OAM. "Local Remembrance Day services have a significant role in regional

and rural communities where the incidence of COVID-19 has been low in recent months." As the Town Crier closed before it was arranged details of what is currently being arranged for Berry will be available on Social Media (<https://www.facebook.com/BerryTownCrier/>) as well as in the Friends

of the Berry Town Crier Newsletter Updates when Mr Stuart Christmas, who organises these events through the Berry Sub Branch, sends us the details. We have been in contact so are looking forward to hearing what can be arranged for this important commemoration.

Berry Alliance Town Crier Management Committee



TRADES & SERVICES DIRECTORY

ADVERTISING RATES TRADES & SERVICES

1 ISSUE = \$60	6 ISSUES = \$252 (\$42 EACH ISSUE)	12 ISSUES = \$432 (\$36 EACH ISSUE)
-------------------------------	--	---

DIMENSIONS ARE 62CM WIDE X 51CM HIGH

DISPLAY ADS

- **1 COLUMN**
Single rate = \$110 or Repeat rate = \$297 (\$99 x 3 issues)
Dimensions: 10cm high x 6cm wide
- **2 COLUMN**
Single rate = \$143 or Repeat rate = \$363 (\$121 x 3 issues)
Dimensions: 10cm high x 12cm wide
- **3 COLUMN**
Single rate = \$176 or Repeat rate = \$495 (\$165 x 3 issues)
Dimensions: 10cm high x 18.5cm wide
- **FULL PAGE**
Single rate = \$363 or Repeat rate = \$900 (\$300 x 3 issues)
Dimensions: 27cm high x 18.5cm wide

Contact the Editor Nancy Davies at
towncrier@berryalliance.org.au
or 0428 037 572



Quality Workmanship, Prompt & Reliable Service

Michael Thame thamepainting@yahoo.com
0410 310 855 [housePainterMike](https://www.facebook.com/housePainterMike)

Lic. 144920C



- Solar quote, design, install, repair and maintenance
- Mains electrical connection
- Underground sub mains to building or structure
- Solar quote design and install
- Meter box upgrade with safety switched or three phase
- New house wire or remodeling
- Hot water install
- Outdoor lighting
- Fan install
- All your electrical needs

LOCAL ELECTRICIAN 0487 093 173

Licence Number 270316C

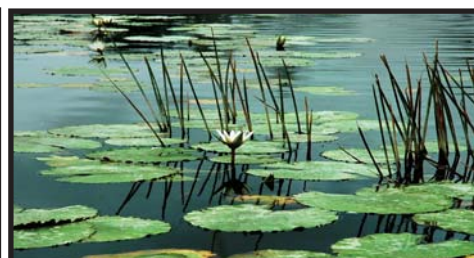
**WINDOW
& GUTTER
CLEANING
HOUSE
WASHING**

**CALL JAMIE
FOR FREE
QUOTE**

0413 582 948



PROMPT, RELIABLE SERVICE



ROB PACKER POND & DAM CARE

- Algae & weed control
- Pumps & filtration
- Fish & plants
- Maintenance & repairs

0409 550 741

TRADES & SERVICES DIRECTORY



Chimney Sweep Wood Fire Installation and Maintenance

Servicing Berry for over 25 years Locally Run
Family Business - Specialising in all your
Wood Fire Needs - Licensed, Insured,
Professional & Clean.

Contact Russell:
0412 241 557 / 4464 1557
Or Luke: 0413 737 316
Lic No L7020

FOCUSED Cleans

focusedcleans.com.au

We focus on...

- Homes
- Offices
- End of lease cleans
- Holiday home cleans
- Insurance cleans
- Spring cleans
- Windows
- Ovens

P 02 4426 6170 M 0431 774 774



SCHOON PLUMBING

Plumbing-Drainage-Gasfitting
Roofing-Guttering
schoonplumbing@hotmail.com

Mini Excavator Hire
New Homes-Renovations
Tindalls Lane Broughton NSW 2535

Call Today! **0419624011**

Television Antennas SHOALHAVEN ANTENNAS

Servicing Berry and
surrounding areas.

- Digital Upgrades
- New Installs
- TV Tuning
- Repair existing systems
- Add Phone/TV Outlets



Ph: 0410 526 672 Paul 0424 243 005
Fax: 02 4422 6672

South Coast Gutter Wiz

GUTTERS BLOCKED?

Our safe, affordable & mess-free vacuum
gutter cleaning service is now available
in your area! Keep your home free from
debris & bushfire safe. Pressure Cleaning
service also available.

Call for a free quote today....

Your vacuum gutter cleaning expert

Phone Garry 0401 492 220



~ Specialising in gentle,
low force techniques ~

SAFE, EFFECTIVE TREATMENT FOR:

- All ages; from babies through to the elderly.
- Headaches/migraines
- Back/neck pain
- Postural problems
- Whiplash
- Scoliosis
- EFTPOS available
- HICAPS now available

57 Queen Street • Phone: 4464 3414



MICHAEL HILL PAINTER & DECORATOR

Quality Work Guaranteed

Domestic Commercial Industrial

ABN 95 969 204 488 Lic No 121389C

0402474569

- Specialising In
- New/Old work
 - Feature Walls
 - Roofs
 - Texture Coating
 - Heritage

Quality Laundry



Quality Linen

One Little Peg, Kangaroo Valley offers
Laundry Services and Linen Hire
at guaranteed competitive rates.

Pick up and delivery available.

Open Monday to Friday, 9am to 4pm

Laundry: 0408 111 PEG (0408 111 734)

Linen Rental Enquiry: 0402 746 927

Email: onelittlepeg@gmail.com



AUTOMOTIVE SERVICE CENTRE

02 4424 0803

96 NORTH ST NOWRA

EUROPEAN SPECIALIST

SERVICE - REPAIRS - REGOS
ALL MAKES & MODELS

THE BOUTIQUE GYM

Personal Trainer *Jen Miller*

117 North Street,
Berry NSW 2535

0413 648 943

jenmiller65@hotmail.com



LOCAL • COUNTRY • INTERSTATE

Experience a New Level of Professionalism

Phone 04 2864 3557 or 4464 3557

Four Legged Friends PET FEEDING SERVICE

For Horses, Dogs, Cats, Birds
& all other domestic pets

Megan White
dip in animal care

0407 407 328

whitewolf99@bigpond.com

Established: 1995

- FEEDING • EXERCISING • RUGGING
- GARDEN • MAIL • GARBAGE

www.fourleggedfriends.com.au



AISCERTIFIERS

FAST TRACK
BUILDING APPROVALS

SWIMMING POOL
COMPLIANCE CERTIFICATES

TONY LEWIS

0417 372 728 • 4421 0004
info@accreditedinspectionsservices.com.au



Wilson Hirst BUILDING

YOUR LOCAL BUILDER

NEW HOMES • EXTENSIONS • RENOVATIONS

02 4421 8677 M: 0449 668 439

[E: wilsonhirst@hotmail.com](mailto:wilsonhirst@hotmail.com)

gerringong physiotherapy
southern coast pelvic health
physiotherapy and pilates
kiama physiotherapy

4234 4666

www.gerringongphysio.com
www.southerncoastpelvichealth.com

TRADES & SERVICES DIRECTORY

Vaughn's Lawn & Garden Service



- Local knowledge
- Professional service
- Fully insured

0408 863 776

www.vaughnsgardening.com.au

G.M. Ellison & Co. lawyers • conveyancers

Graham Ellison LL.B.

- Real Estate & Business Conveyancing
- Wills, Probate and Personal Arrangements

5 HOST PLACE BERRY

Ph: 0408 444 808

graham@gmellisonlawyers.com.au



For all your concreting & Landscaping projects
Call or text Ben on 0438 703 109



HATHAWAY GARDENS

WE SERVICE GERRINGONG, GERROA, BERRY, KIAMA & SURROUNDING AREAS

- Qualified Horticulturist • Garden Design & Advice
- Garden Makeovers & Restorations • Garden Maintenance
- Regular Lawn Mowing & Edging

Phone Lawrie Hathaway **0411 888 333**

AR Contracting



**Rural Fencing
Hay and Silage Contractor
All areas of Earthworks and Excavation
Private and Public Road Construction
Dam Construction**

0422 282 766



**MICHAEL
BARRETT**
LICENSED BUILDER

FOR ALL YOUR SMALLER JOBS
DECKS, PERGOLAS, BATHROOM/ KITCHEN RENO'S
SMALL ADDITIONS AND EXTENSIONS
40 YEARS EXPERIENCE

FREE QUOTES 0408 217 637



OneStopHomes

YOUR LOCAL BUILDER

NEW HOMES • EXTENSIONS • RENOVATIONS

02 4421 8677 M: 0449 668 439

www.onestophomes.com.au

Life is better in a One Stop Home

HERE IS HOW TO GET THE BEST KITCHEN,
VANITY, FURNITURE, TIMBER WINDOWS,
DOORS, FLYSCREENS AND JOINERY

Rybrook Joinery

CALL SCOTT OR MICHAEL

4422 4600

MARK FOX TILING

- Floor Screeds • Waterproofing
- All interior and exterior wall and floor tiling

Pool water lines and complete pools

With over 30 years' experience
in the construction industry
I have the solution to all your tiling needs.

Call 0481 297 087

FOR YOUR FREE QUOTE TODAY

Licence No. 304070C



- Domestic and Commercial Cleaning
- Regular and Spring Cleaning
- Presentation Cleaning
- Rental Exit Cleaning
- Window Cleaning

Call Rhona for a free quote: **0417 652 892**

Over 20 years' Experience ...

ELECTRICAL CONTRACTOR

EEPS
Lic. No. 133674C

DOMESTIC & COMMERCIAL

- Solar Power Installation
- Home Automation Systems
- Security Lighting
- Pools & Spas
- Hot Water Systems
- Oven & Stove Repairs
- Safety Switches
- Smoke Detectors

Contact peter today!

0412 594 907 | 4464 1993

ENDEAVOUR ENERGY AUTHORISED LEVEL 2 SERVICE PROVIDER



MISS SPARKLES SHOALHAVEN

External House Cleaning

HOUSES FROM \$148

- ★ Environmentally Friendly
- ★ House/Driveway Packages
- ★ Removal of Cobwebs
- ★ Patios and Driveways
- ★ Mildew Treatment
- ★ Windows/Screens included
- ★ Commercial work
- ★ Seniors Discount

Phone Dennis for a free quote:
0407 642 256

Now Offering: Internal Window Cleaning &
Licensed/Insured Electrical Work (Lic No. 209514C)

JET LOCKSMITHS & SECURITY



**Automotive | Residential
Commercial | Industrial**

MOBILE 24/7 LOCKSMITH SERVICE

0498 770 088

www.jetlocksmiths.com.au

Master Locksmith | Security Lic #000101098

Gerringong Painting Service

Lic: 186465C

- New & Repaints
- Interior & Exterior
- 30 Years Trades Experience



GREG DENT 0438 637 141



SINCLAIR

PLUMBING • WATERPROOFING • TILING

RYAN SINCLAIR : 0478 060 340

Need a hand around the house?

PLUMBING - TILING & REPAIRS
PROPERTY MAINTENANCE - WATERPROOFING
PAINTING - GARDEN PAVING

TRADES & SERVICES DIRECTORY



- All Earthworks
- Landscaping
- Driveways
- Rural Roads



Charlie 0418 429 740
charlie@ckbcivil.com.au Lic 244729c



MOUNTAIN ECHO
landscape & horticulture

environmental contracting, garden management,
landscape design & construction, permaculture design

Ryan 0409 743 828 & Katie 0424 236 235
www.mountainecho.com.au



**All Creatures
Mobile Vet**



- Convenient pet health checks and vaccinations
- Compassionate euthanasia at home
- Complete range of Veterinary services
- Pick up and drop off service when your pet needs to visit our hospital
 - No call out fee
- Emergency service available
- Service area from Albion Park to Milton NSW

Personalised Veterinary care at home

(02) 4464 1899 www.allcreaturesmobilevet.com.au



**Computer
Troubleshooters**

TECHNOLOGY SOLVED

- Residential or Business we come to you.
- Hardware and software repairs and sales.
- Networking solutions.
- Over 20 years' experience.

0422 227 456
www.ctsnowra.com.au

LOCAL SERVICE – GLOBAL STRENGTH



MOBILE SERVICE & REPAIRS

0414 800 359

* RIDE-ON MOWERS * TRACTORS & AG EQUIPMENT
* LOADERS * LIGHT TRUCKS * CARS & 4WD'S
* AG/QUAD BIKES & UTV'S * STATIONARY ENGINES



Local Plumber
Fast & Reliable 24/7

1300 792 082

www.curranplumbing.com.au

\$50 OFF
ANY SERVICE IF YOU MENTION THIS AD



AG & MECHANICAL

- All Mechanical Repairs
- Rego Inspections for Trailers, Motorbikes and Light Vehicles up to 4.5GVM
- Tyre Repairs & Replacements
- Log Book Servicing

02 4464 1125
88 QUEEN STREET BERRY NSW

FIND US NEXT TO THE SHELL PETROL STATION ABN 80 621 680 859

**SOUTH CENTRAL
PLUMBING**

PLUMBING | GASFITTING | ROOFING

ABN: 54 613 052 547 | Licence # 319673C

Commercial and Residential Plumbing
Maintenance Plumbing, Drainage, Roofing,
Gas-Fitting and Backflow Prevention

Professional and Reliable service

Call Luke 0431 290 296

www.southcentralplumbing.com.au

MANN MADE
BUILDING & CONSTRUCTION

CHRIS MANN 0431 671 475
mmbuildingandconstruction@gmail.com

NEW HOMES | RENOVATIONS | EXTENSIONS | DECKS-PERGOLAS | CONCRETING

ABN 40 624 149 506 LIC. NO. 292587C

Surf
ELECTRICAL

KANGAROO VALLEY

CALL BILL OR DEBBIE:

0424 867 994 / 0401 759 241

info@surfelectrical.com.au

Like us on Facebook!

Review us on Google ★★★★★

AREAS OF SERVICE:

BERRY / KANGAROO VALLEY / CAMBEWARRA / GERROA
GERRINGONG / KIAMA / SOUTHERN HIGHLANDS

- Fully Insured • Residential • Commercial • Industrial
- 20+ years experience • New Homes • Maintenance
- Renovations & Extensions • Repairs • Upgrades • Installations
- Switchboards • Safety/Maintenance Inspections • Troubleshooting

https://surf-electrical-pty-ltd.business.site
ABN 70 845 107 241 LIC NO. 253095C



wholebody
PHYSIOTHERAPY
...dedicated to your wellbeing

Mary Pentecost

84 Queen Street Berry NSW 2535
email: wbpqueen84@hotmail.com

4464 2874

FIONA HOPTMAN
Natural Medicine

0481 843 674

Restore Function & Regain Wellness
www.fionanaturalmedicine.com.au

PLUMBER DRAINER GASFITTER MINI EXCAVATION

**Marland
Plumbing Services**

Licence No. 72832C
ABN 43 571 877 557

Over 25 Years Experience in the Shoalhaven

Phone: 4480 2251 Mobile: 0412 044 135
marlandplumbing@iinet.net.au



**Southern
Tree Service**

- Qualified Arborist
- Qualified Horticulturist
- Tree care and maintenance
- Expert trimming and tree removal in confined areas
- Chipper • Mulch
- Advice on replacements
- Stump Grinding
- Fully Insured

Paul Gillen

Ph/Fax 4464 2822 • Mobile 0407 405 968



Colin Whitehurst
Painting and Decorating

Interior - Exterior - Heritage

Honest | Reliable | Qualified,
Insured | Advice | Preparation
FREE QUOTES

0400 135 128



Elders

Berry

Calling Huntingdale Homeowners!

DID YOU KNOW?

That Elders Berry is one of, if not the most active agents for resale properties in your estate.

If you've recently finished building your new Berry home and would like to get an idea of the market value of your property, even if you aren't thinking of selling just yet, give us a call and we'd love to check out what you've created!

Get in touch with
Tim or Nick to arrange
a time that best suits you



Tim McGoldrick

Principal

☎ 0414 157 794



Nicholas Lyell

Sales Manager

☎ 0401 658 450

121 Queen St, Berry • 4464 1600 • www.eldersberry.com