



# BERRY TOWN CRIER

PO BOX 202 BERRY NSW 2535

WWW.BERRYALLIANCE.ORG.AU

 FIND US ON FACEBOOK

DECEMBER 2019 PRICE: \$3.00

## Berry Merry Christmas and the Grand Christmas Street Parade

Page 6

## New Year's Eve Fireworks

Page 5

## Berry CWA is hosting a free Fun Trivia Competition on Australia Day - All Welcome

Page 13

## Boongaree Update

Page 2

## An Invitation from Berry Community Church

Page 8

## Take a look at the Updated Sustainability Reference Guide for some great ideas and resources

Page 15

## Berry Plant Propagation need some volunteers. Could that be you?

Page 23

*Thank You*

Thank you to our readers, dedicated community groups  
and advertisers from the Berry Alliance.

**WE'LL BE BACK IN FEBRUARY 2020**

CUT-OFF DATES FOR 2020 ON PAGE 24



# BERRY ALLIANCE INFORMATION



The Town Crier is produced  
by the Berry Alliance, Inc.

The purpose of this publication is  
to communicate to the people of  
Berry about community activities  
and to generate a small income  
for the Berry Alliance to cover  
administrative costs and donations.

## MEMBERSHIP

Membership of the Berry Alliance  
costs \$10 pa. It aims to share  
information amongst community  
groups and individuals, and to  
ensure that Berry continues to  
be a community we are proud of.

Membership is open to  
Berry community groups  
and individuals. To join the  
Berry Alliance, write to  
PO Box 202 Berry NSW 2535

## ALL BERRY ALLIANCE ENQUIRIES

**Secretary:** 0449 569 059

**Email:** [towncrier@berryalliance.org.au](mailto:towncrier@berryalliance.org.au)  
Post Office Box 202  
Berry NSW 2535

## Editor's Note



The closing date for our February issue  
will be Wednesday 15th JANUARY 2020  
at 5pm. Please submit prior to this date if  
it is your first submission. Material can be  
submitted via e-mail to:

[towncrier@berryalliance.org.au](mailto:towncrier@berryalliance.org.au)  
Phone 0428 037 572

Town Criers can be downloaded for free from  
[www.berryalliance.org.au](http://www.berryalliance.org.au) or our Facebook  
Page: Berry Town Crier.

Nancy Davies - Berry Town Crier

### TOWN CRIER EDITORIAL BOARD

Nancy Davies Rick Gainford  
Holly Landgren Adrian Bishop

Contributors are those from the Berry community who  
have news or views relating to residents of the area. The  
opinions expressed in the Town Crier are not necessarily  
those of the Berry Alliance or the Editor. The Town Crier  
is published every month, with a circulation of 2400.

PRINTED BY **Berry Printers**  
CONCORDE WAY BOMADERRY PH: 4422 3774

PRINTED ON RECYCLED PAPER



Tis the season to be jolly and the Township of Berry has  
many reasons to celebrate! The delivery of Stage 1 - the  
Rotary Nature Play Park (Children's Adventure Zone, Youth  
Zone and Learn to Ride) will occur in 3 stages between  
2020 and 2023. Berry Rotary and Council are working  
together to deliver this nature-based play area for the  
Shoalhaven Community and visitors. This announcement is  
very exciting and a very big thank you to the Rotary Club of  
Berry for their vision and perseverance. A further thank you  
to Gareth Ward, MP for understanding the importance of  
such a project and assisting with the funding for the delivery  
of this wonderful facility.

For more information, please visit the Shoalhaven City Council Get Involved page:  
<https://getinvolved.shoalhaven.nsw.gov.au/berry-district-park> or call 4429 3111  
and ask for the Social Infrastructure Planning Unit.

## Note from the Editor

After another eventful year, I'd like to take  
a few moments to thank everyone who  
has made this publication a spirited and  
authentic voice for the residents of Berry.  
Over the 6 and half years of editing the  
paper, I've enjoyed getting to know some  
of the locals through the work they do  
in their community groups. I am always  
impressed by these tireless volunteers who  
show compassion not just for Berry natives  
but also those in need globally - Berry  
has a big heart and it is our hope that this  
paper exhibits these efforts sufficiently.

To our advertisers, thank you for supporting  
the Town Crier. Revenue from advertising  
is our only source of income; it is only  
through advertising that our community  
paper can continue to provide such valued  
communication for free to Berry residents.  
I wish everyone a safe and peaceful  
Christmas!

Our February edition will be out in late  
January (cut-off January 15th). If you have  
any enquiries, please email them to me at  
[towncrier@berryalliance.org.au](mailto:towncrier@berryalliance.org.au)

Nancy Davies

## OPEN STUDIO



**DAVID COLLINS POTTERY**

**Saturday 14th December**

**Sunday 15th December**

**10am - 4pm**

**481A Woodhill Mountain Road, Woodhill 2535**

Phone: 0433 434 602

[davidcollinspottery.com.au](http://davidcollinspottery.com.au)



# Berry Courthouse



With all this wild wind and hot weather, the gardens at the Berry Courthouse are holding up remarkably well. Good mulching, somewhat protected from the wind and judicious watering has assisted this.

The functions that have used the gardens have remarked on how lovely they are which is music to our ears and thanks should be shared with our volunteers and employed gardeners for this.

The new trees in the crab-apple walk are suffering the most with some deep watering required.

Our policy of no dancing outside (no dance floors) and maximum 90 people outside has not only resulted in a good reduction in any noise for our neighbours but the grass has

had a chance to recover and the lawn is looking the best it has for many years. A win for everyone.

We have recently replaced an unsafe light pole in the rear garden and now the lighting around the carpark and the amenities block is much improved again. We have installed some motion detector solar lights as well as power points outside in the carpark.

The building is also in a really good state currently with all the work done paying dividends.

Washed down inside and out, painting touch up where needed, regular maintenance has been a key to this result.

If you would like to join our group of volunteers, send us a message and we will

get back to you and see where your interests are. You will be very welcome. [functions@berrycourthouse.org.au](mailto:functions@berrycourthouse.org.au)

If you or your community group are looking for a beautiful place to hold a meeting, a function or a wedding, hop on to our web page and have a look at our rates. Remember, Berry Community groups (as registered in the Berry Town Crier) receive a discount on the usual rental rate.

Go to: [www.berrycourthouse.org.au](http://www.berrycourthouse.org.au)

**Rick Gainford**  
President

**For the Berry Courthouse  
Conservation Committee**



## CAROLS IN THE PARK

DEC 24, 7PM-8:15PM, BERRY APEX PARK

Come, bring a chair or rug and  
celebrate Christmas with the people of Berry.  
The Kingship of Jesus is cause for joy.

for inclement weather, alternative venue is the Berry School of Arts

Join us at the following Christmas celebrations:

---

**ST. LUKE'S ANGLICAN CHURCH, Princess St.**  
 CHRISTMAS EVE 11PM CHRISTMAS SERVICE  
 CHRISTMAS DAY 8AM CHRISTMAS SERVICE  
 9:30AM FAMILY SERVICE

---

**BERRY UNITING CHURCH, Albert St.**  
 CHRISTMAS DAY 9:30AM CHRISTMAS SERVICE

---

**SCOTS' PRESBYTERIAN CHURCH, Victoria St.**  
 CHRISTMAS DAY 9AM CHRISTMAS SERVICE

---

**ST. PATRICK'S CATHOLIC CHURCH, Albert St.**  
 CHRISTMAS EVE 9PM CHRISTMAS VIGIL  
 CHRISTMAS DAY 8AM CHRISTMAS MASS

---

**BERRY COMMUNITY CHURCH, Schofields Ln.**  
 CHRISTMAS DAY 9AM CHRISTMAS SERVICE



# The Berry & District Historical Society

## Berry's Post Offices

As Berry Post Office approaches its busiest time of the year, it is interesting to know that it had at least four former lives.

The first Post Office in Broughton Creek, as Berry was then known, opened in 1861 and was situated at the original Mananga homestead at the north entrance to Berry. Donald Stewart, the first Postmaster, was on a salary of £ 12 per annum (\$1,140 approx) plus a small commission on stamps sold.

When Mr Stewart died in 1876 the Post Office was transferred to James Wilson's store, on the corner of Pullman Street and Beach Road.

In 1877 the Telegraph Line was connected to Broughton Creek and in 1879 with George Brown as Postmaster, James Wilson erected a special building near his store to house both the Postal and Telegraph Departments.

However in 1882 the then Postmaster reported to the Postal Department the disgraceful working conditions at his office, as all the postal, telegraph, money order and saving bank business was being carried out in a 9 ft (274cm) x 12 ft (365cm) room.

In 1883 David Berry donated a block of land on the corner of Queen and Prince Alfred Streets for a Post & Telegraph Office. It was decided to spend £ 1,650 (\$190,000 approx) on the building and a tender was accepted from W. A. Isley. The completed building was handed over on 11 November 1886 and the occasion was a gala event for the town. The Postmaster-General Mr F. B. Suttor officially opened the building before a large gathering which included various members of Parliament and David Berry himself, who was then 90 years old.

There was a long delay in the arrival of the Postmaster General and his party however, as their steamer had gone aground in Broughton Creek! Then in 1992 the Post Office moved again – this time to the location we know so well, in Queen Street Berry near Broughton Court.



## Berry Museum

135 Queen Street  
BERRY 2535



### OPENING HOURS

Saturdays, School Holidays  
and Public Holidays

11.00am - 2.00pm

Sundays

11.00am - 3.00pm

### FREE ENTRY

[www.berryhistory.org.au](http://www.berryhistory.org.au)

If you'd like to join us, please call in to the Museum and have a chat, call (4464 3097) or email us [berrymuseum@bigpond.com](mailto:berrymuseum@bigpond.com) - We look forward to meeting you.

## DAVID BERRY



## HOSPITAL AUXILLIARY

On Saturday 12th October, some members of our Auxiliary had the great pleasure to attend the launch of the historical publication of : 'A Munificent Bequest- David Berry Hospital- The First Fifty Years 1909-1959,' Published by local historian and author Robyn Florance.

The Hospital was erected with funds from the munificent bequest of 100,000 pounds by the founder of the Berry township, David Berry, in 1909. (Munificent meaning: generous, charitable, magnanimous, bountiful). Quite a few of the nurses who worked at the Hospital in the early days attended the launch and told stories of amazing surgical procedures, some funny and certainly would not be performed today. The Hospital was officially opened on September 18th, 1909 and the publication 'A Munificent Bequest-David Berry Hospital' is launched in the Hospitals 110th year.

If you were not able to attend the launch, then the book is worth reading and available from the Berry and District Historical Association at the Berry Museum.

We would like to thank everyone who had a look at our last street stall and bought some books.

Books still have an attraction to many, who just like to sit and read from paper and we are thankful for that. Our next street stall is on Saturday December 7th, where you will be able to get your morning tea treats, Christmas cakes and many other biscuits and slices. Along with a gift or two for that special person, check it out.

Our meetings are held at the Hospital on second Monday of Month, if you would like to join us, please give President Marilyn a call on 4464 1774, you will be made most welcome.

David Berry Hospital- your Hospital - Berry's Hospital.

Irene Birks - Auxiliary Publicity Officer

Shoalhaven  
City Council

## BERRY Recycling and Waste Depot

### CHRISTMAS HOLIDAY HOURS

**OPEN** Every day from Friday 27 December 2019 to Friday 31 January 2020,  
except public holidays as listed below

**CLOSED** Christmas Day, Boxing Day, New Year's Day  
& Australia Day

Don't forget! **Weekly collection** of your yellow kerbside  
recycling bin from Monday 23 December to Friday 31 January 2020.

Your collection day remains the same.



More information visit [shoalhaven.nsw.gov.au](http://shoalhaven.nsw.gov.au)



# New Years Eve Fireworks Spectacular On Again



The New Years Eve Fireworks Spectacular and Family Fun Night staged by the Rotary Club of Berry is on again at Berry Showground - with the gates opening at 5pm.

Along with carnival rides and slides, there are free, good old fashioned games for the children to play, like knock down the cans, sack races, hula hoops and more. Entertainment throughout the night is by The Rock Addicts plus children's favourite - Pirate Pete. And, ShowMow Racing will stage their super exciting ride-on lawn mower racing.

At 9pm the magnificent fireworks spectacular lights up the night skies – you need to be there to experience the thrill of sitting right underneath them - few other fireworks displays are as exciting as this.

After the fireworks the The Rock Addicts entertainment will rock on, as will the carnival rides for those wishing another go.

Families are encouraged to bring a rug and make a real picnic night of it. This is an alcohol-free event with proceeds going towards the Rotary Club's various community endeavours including the Rotary Nature Play Park in Berry. Entry is \$7.50 per person with children under 15 years free.



## Merry Christmas

## Bringing Music to Life

### **BERRY MUSIC CENTRE**

- » School Music Needs
- » Musical Instruments & Accessories
- » Instrument Repairs, Restring & Instrument Hire
- » Audio Equipment, Sheet Music, CDs, DVDs, & Vinyl
- » Memorabilia & Music Giftware
- » Shoalhaven Entertainment Centre Box Office

Berry Music Centre - Your Local Music Store  
Shop 1 / 118 Queen St Berry NSW - Ph **4464 1284**





# Grand Christmas Street Parade

**DON'T MISS IT!  
IT'S BIGGER AND BETTER THAN EVER!**

Over 30 floats, sports, dance, music or other groups are participating.

It's a real celebration of Christmas in Berry.

**Wednesday 11 December**

PARADE COMMENCES: 5.45pm from Berry Showground,  
going along Albany Street into Queen St, through Berry and finishing at Apex Park.

ENQUIRIES: Haseena Tweddle (Berry Music Centre)  
Ph: 0409 318 171 E: berrymusiccentre@gmail.com

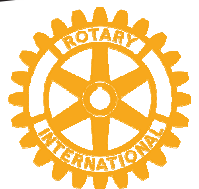
Break out your Santa suit and let's make this a real Christmas party.



BERRY MERRY CHRISTMAS



Community projects by The Rotary Club of Berry



**Help make a difference - join ROTARY**





## BERRY MEN'S SHED

# SCHOLARSHIP PROGRAMME SECURED FOR 2020



This year's Annual Sale was a great success generating enough income to allow us to continue our Scholarship programme into 2020 with Bomaderry, Nowra and Shoalhaven High Schools along with TAFE Nowra. The success of our Annual Sale is totally dependent upon the support of the Berry community in purchasing items made by the Shed along with items donated. "The proceeds exceeded last year's sale and gives our members the confidence in putting on another Sale in November 2020" said President Phil Reid. If you are still interested in buying some of the items left over, please feel free to call into the Shed on Tuesday or Thursday. The Shed will close for Christmas on 10th December and re open mid-January 2020. This year we invited Rotary to join us on the day and they were delighted with the number of sales made during the morning. Berry Uniting Church also had a sale of preloved books and organizer Janet Brentnall was delighted with the response from the community. This year's Shed Christmas party luncheon will be held on Tuesday 10th December and already over 70 members and partners have indicated their intention to join in the festivities. The cost is free to financial members however the cost for partners will be \$25. On behalf of the Berry Men's Shed we would like to thank all those members of the community who brought items in for repair and to those who purchased items at the sale and wish you and your families all the best for the Christmas period.

Richard Wiseman Publicity Officer



Merry Christmas & Happy New Year - Thank you for your support & generous donations of material throughout the year.

**We will be at the Berry Farmers' Market  
Thursday, 12th & 19th December**

*Come and buy your  
Festive Boomerang Bags*

Why not wrap a gift in a Boomerang Bag instead of using wrapping paper? Or buy one to fill with Christmas treats as you shop at our wonderful Farmers' Market.



**THERE WILL BE NO MEETING IN JANUARY**  
Contact: Katrina Underwood 0416 181 543  
underwoodhill@me.com



## Farming Courses

"Hands On, On Farm"

Education for novices in a real farm environment



If you have an interest in farming, have a small property or are interested in purchasing a small property and would like to gain some rudimentary knowledge in farming principles, Lifestyle Farming Courses can assist you. The courses have been developed to accommodate people wanting to understand how a small property operates, the advantages, disadvantages and considerations to be made either prior to purchase or afterwards.

Some of the topics covered at our Berry property include:

- Introduction to farm ownership and considerations towards choosing an enterprise,
- Basic farm machinery, tractors, tools and implements,
- Introduction to cattle, horse ownership, sheep management,
- Viticulture,
- Fencing and yards.

Additional subject matter is delivered at a property located at Shoalhaven Heads where the following topics are addressed:

- Introduction to alpaca management, sheep management, vegetables for household consumption and beekeeping.

For further information e.g. course dates, costs etc, please contact:

**Paul Gibson**

Phone 0487 340 912 or 02 44 641 810,

Email [paul@lifestylefarmingcourses.com.au](mailto:paul@lifestylefarmingcourses.com.au) Website [www.lifestylefarmingcourses.com.au](http://www.lifestylefarmingcourses.com.au)

**DON'T FORGET TO FILL  
UP YOUR  
BOOMERANG BAG  
AT THE**



**BERRY  
FARMERS' MARKET**

**HELD EVERY THURSDAY,  
AT THE COW SHEDS  
BERRY SHOWGROUND,  
3 PM - 6 PM.**

**FRESH LOCAL PRODUCE  
AVAILABLE, ENTERTAINMENT  
FOR ALL THE FAMILY  
AND MUCH MORE.**





## **COFFEE** AND *Friends*

Many thanks to all our great speakers throughout the year. Also many thanks to those who have come along and listened and supported our Coffee and Friends group. It's been great meeting old friends and getting to know new ones.

We are already planning for next year and looking forward to returning in February 2020.

Thank you to Nancy and the Town Crier team for their help throughout the year. Wishing everyone a wonderful Christmas. Take time to enjoy and value family and friends.

See you in the New Year!

### Berry Community Library

The last Community Library day for 2019 will be Thursday 19th December so come along and stock up for your holiday reading. We will reopen on Monday 20th January 2020.

We've had an amazing year and thanks must go to our great volunteer team who play such a vital part in keeping the Library up and running.

### Library Opening Hours

Monday and Wednesday 1-4pm

Tuesday Thursday and Friday 10-1pm

77 Albert Street, opposite the IGA carpark, behind the Uniting Church.

For more information contact

Janet on 0425 220 258



# **Berry** **Community** **Church**

## Would you like to read the Bible with me?

There is really no book quite like the Holy Bible. It's a book that was written thousands of years ago by some 35 authors on the other side of the world. It was written in very different cultures by people who had very different ways of life and different understandings of themselves and the world they lived in. Yet, despite all of these differences, this book continues to outsell any other book every year. There is something about the message of the Bible that is still relevant to our world. How can an ancient book still speak directly into our world? What is it about the message of this book that inspires, comforts and brings hope to billions of people around the world?

If you read the Bible for yourself, you will notice that it is full of stories. Stories of normal everyday people, with all of their normal everyday struggles. There are stories of defeat and of victory, love and war, power and captivity and pretty much every human experience. It's full of real stories of real people. The difference between this and every other book of stories is that the centre of each of these stories is God. You could say that the Bible is really only one story, the story of God and His people. Jesus sums up this story in John 3:16; For God loved the world so much that he gave his only Son, so that everyone who believes in him may not die but have eternal life.

One of the best ways to read the Bible is to do it with others. I am keen to meet with anyone who might have never read the Bible before, but would like to give it a go. I believe that there is something powerful when people sit and read the stories of God and His people together. I have no agenda and there are no catches. I believe that the Bible can speak for itself. Get in contact with me if you are interested.

Joel Noonan

joel@berrycommunitychurch.org

0403 193 945



**'Proclaiming Christ,  
serving the community  
with love'**

## Berry Uniting Church

77 Albert Street Berry

P: 4464 2904

E: berryuniting@gmail.com

**Sunday Celebrations: 9.30am**

### Groups & Activities:

- Bible Study Groups
- Fellowship Groups • Prayer Groups
- Social Craft Group
- Computers for Seniors
- Berry Apple Users Group
- Coffee and Friends
- Berry Community Library

**www.berryuniting.org**



# **Berry** **Community** **Church**

Lighting up lives and communities with Jesus

**We meet at Graham Park**

**8 Schofields Lane Berry**

**Sunday Services 9am, 10am & 5pm**

Activities include mainly music, Boys & Girls groups,  
Berry Youth & Connect groups.

**We'd love to see you here.**

info@berrycommunitychurch.org 4464 2315

**www.berrycommunitychurch.org**



# The end of a busy year for Berry Community Preschool

Berry Community  
Preschool

As the year draws to a close, we have an exciting addition to Berry Preschool's grounds with the completion of a new playground area including a sandpit, mud kitchen, yarning circle and native garden. This wonderful area was built by Natural Habitat Landscapes in time for the children to enjoy it for the last term. They have been loving exploring it.

Friday's group recently visited the Berry Masonic Village and by all accounts a great time was had by the children and residents. The children displayed their Zumba skills and were entertained with a dancing performance by residents. We thank the Village for having us and providing lunch for the children.

Tuesday's group were invited to Berry Fire Station and were thrilled to observe the fire trucks and station. We'd also like to thank the station for arranging our visit, and for the great job they do in our community. We are very grateful.

We are pleased to report that the preschool's fundraising efforts for Pink Up Berry – which included dressing up in pink and holding a cake stall selling pink goodies – raised \$301 for the McGrath Foundation. Lastly, we would like to farewell our children who will be graduating from preschool and heading off to 'big school' next year. We will miss them and wish them well in their new adventures. We're eagerly anticipating farewelling them at our annual Christmas party to be held on the 13th of December at the Berry Showground. Everyone will enjoy the BBQ, petting zoo and Magic Jester Magician – as well as a special visit from Santa! We look forward to welcoming our returning children and new children and families in the new year.



Our new playground area



## Water restrictions

There has been unusually dry weather and the long-term forecast suggest that it's set to continue. For more information call **1300 662 246** or visit **[www.shoalwater.nsw.gov.au](http://www.shoalwater.nsw.gov.au)**

Level 1 water restrictions  
**NOW APPLY**

Shoalhaven  
City Council

Shoalhaven  
WATER



**SCOTS' PRESBYTERIAN  
CHURCH, BERRY**

**All Welcome!!!**

**Service Time: Sunday 10am**

**Sunday School: Sunday 10am**

**Minister Rev Isaac Jung - 4464 1020**

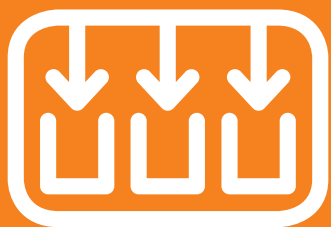
**Cnr Alexandra Street & Victoria Street  
Berry**

*Our purpose is to  
Love God with our heart, soul, mind and might  
and to  
Love our neighbour as ourselves.*

*Ordinary people worshipping an  
extraordinary God*

**[www.berrypresbyterianchurch.net.au](http://www.berrypresbyterianchurch.net.au)**





# Community Recycling Centres

**Problem Waste?**  
**No Problem!**

**FREE  
SERVICE**



**Drop off problem household waste at  
Council's Recycling and Waste Depots**

Available during normal depot hours

For more information visit [www.epa.nsw.gov.au/recyclingcentres](http://www.epa.nsw.gov.au/recyclingcentres)



Only household quantities accepted.  
This project is a NSW EPA Waste Less, Recycle More  
initiative funded from the waste levy.  
Visit [www.epa.nsw.gov.au](http://www.epa.nsw.gov.au)





## How old was the Bum Tree?

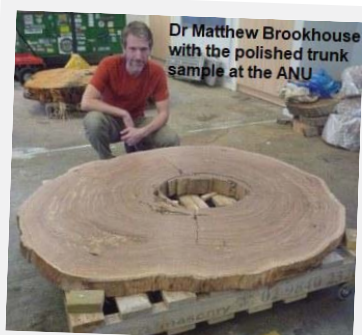
In 2014, the Shoalhaven City Council determined that an old-growth tree on the road verge near the intersection of Beach and Gerroa Roads was impeding the safe operation of the intersection and should be removed. The tree was known as the "Bum Tree" due to an odd postural shaped burl at its base. The decision prompted considerable opposition and debate. Despite its recognised ecological value, roadside vigils, and public discussion of alternatives, the tree was felled on 14 March 2014. Close inspection of the stump revealed the tree originally had two trunks, and at some time in its early life, one of these had fallen, and the resulting overgrowth across the scar had formed the infamous burl. It was also a home to Greater Gliders. Berry Landcare began a project to salvage a sample 'slice' of the trunk and accurately determine the tree's age.

Hundreds of volunteer hours then followed in preparing the sample and sanding the surface to a fine burnish to reveal its record of tree rings. An analysis of the rings, combined with radiocarbon dating, was then conducted by Dr Matthew Brookhouse at the Fenner School of Environment and Society, Australian National University.

The analysis concluded that the Bum Tree germinated sometime between 1626 and 1680, that is, between 334 and 388 years ago, well before European knowledge of the Australian continent. The polished trunk is now a permanent display at the Berry Museum. The salvaged burl can be seen at the Shoalhaven Heads pool complex.

The Bum Tree was situated within the Berry Wildlife Corridor, an important wildlife corridor between the coast and the hinterland. Berry Landcare encourages landholders to protect and connect their existing patches of bush. Landholders interested in funding support can contact Bush Connect Project Officer, David Rush by email: davidr@npansw.org.au or phone 0418 977 402.

**For Worksite dates see landcare.nsw.gov.au/Berry Landcare.**



Just flitting through the diary and we are onto the last month. It only seems like yesterday I bought this little book and I will have to get a new one soon. Been a good year: 38th Birthday (oh to be that young again!), lots of outings, coffee mornings, bingo, flower decorating, luncheons and great guest speakers.... Well that's enough to encourage you to come and join our VIEW Club! If we could have some new members from the newer parts of Berry it would be good. Let Dad mind the kids and have the night out. Just think, we were your age when we joined VIEW Club all those 38 years ago and it had a huge following then; no smart phones or other distractions.

We used to meet on a Monday before the Club changed its opening days. I remember one birthday night, we had guests from out of town and there was a chance of flooding and they had to leave the event early. Not much chance of that happening at the moment.

Any way we meet at the Berry Bowling Club on the third Wednesday of the month 6.30 for 7pm start, ring Jan if you would like to join us or for members who wish to cancel on 44642181 before noon on the Sunday before the meeting on Wednesday.

Coffee is at Hedgehogs 10.30 on the 1st Thursday of the month.

We are having a break over January, but we will still meet for dinner somewhere on the 3rd Wednesday which is optional, so you just turn up. February is the all-important AGM with some possible minor changes to the committee so pluck up your courage and join us.

The December Meeting will be a fun night so we can let our hair down put on the Santa Hats and have a good time.

*Merry*  
**Christmas**

AND

HAPPY NEW YEAR

**Yolande**  
 Publicity


**bombo**

blinds | curtains | shutters | awnings



**4237 8280** [www.bombo.com.au](http://www.bombo.com.au)

Visit our beautiful showroom at **7 Johnson Street, Kiama Downs** (near the IGA)

WE CARRY THE FABULOUS "BLINDS BY PETER MEYER" RANGE • ALL PRODUCTS COMPLY TO CORD SAFETY LAWS



# BELLE PROPERTY BERRY

## Recent Sales for 2019

98 Stafford St, Gerroa	\$3.85m
1071 KV Rd, Berry Mt	\$3.9m
90 Moeyan Rd, Berry	\$1.53m
21 Beach Rd, Berry	\$NFP
199 Coolangatta Rd, Berry	\$2.72m
321 Bryces Rd, Far Meadow	\$1.94m
120 Paringa Rd, Long Reach	\$3.1m
1 Ferry Lane, Nowra	\$900K
2 The Gables, Berry	\$NFP
9 North St, Berry	\$1.06m
180A Moss Vale Rd, KV	\$NFP
15C Roxbrough Rd, Berry	\$1.65m
81D Jorgenson Rd, Berry	\$3m
81 Roxbrough Rd, Berry	\$2.6m
246 Tannery Rd, Cambewarra	\$1.2m
29 Philip Dve, North Nowra	\$680k
KV Rd, Berry ( Land )	\$1m

## Our Brand –

Belle Property Berry believes great people make a great business. Our agents are talented, dedicated and community minded professionals. We value integrity, trust and sincerity as much as we value hard work, determination and success. Our people do business with heart and purpose and we support them with a business environment conducive to success.

We sell simple studios and multi-million dollar homes with the same commitment, professionalism and attention to detail. We believe outstanding presentation, strategic marketing, genuine client service and superior sales skills are the core ingredients of a premium outcome at any price level.

## Our Service –

Quality service begins with courtesy and respect, backed up with enthusiasm, a desire to support and help, as well as a determination to ensure the job is done properly. Clear, open communication is essential in bringing the right properties and buyers together. The team at Belle Property Berry take the time to understand what is important to their clients and make sure they are informed every step of the way.

Time and time again, this has proven  
to be the difference between  
'FOR SALE' and 'SOLD'.



**Gary Dale**  
Principal/  
Licensee



**Nick Dale**  
Property  
Consultant



**Susan Dale**  
Office  
Manager



**Emily Agar**  
Property  
Manager



122 Queen St, Berry



(02) 4464 1636



## A win for local heritage

In late 2017, members of the Berry and District Historical Society (aka "the Museum"), formed a Conservation Committee for the Berry Railway Station Precinct. The Committee arranged for a petition - Help Save the Berry Station Master's Residence to save the unique and rare building which is an integral part of the heritage listed precinct. The petition received wide support from Berry businesses and gained over 3,500 signatures.

Sydney Trains is the property owner and is responsible for the Berry Station Precinct. Sydney Trains then undertook further investigation into the condition of the Station Master's Residence (SMR). A Condition Report outlined future requirements for maintenance and repairs and the potential for reuse.

Since determining that the building could indeed be saved, Sydney Trains has liaised closely with the Conservation Committee to preserve the historic elements of the Berry Station Precinct as much as possible.

Steady and ongoing progress is being made in the precinct. The interim stabilisation work on the SMR is almost complete. This work has resulted in significant improvement to roof drainage, downpipes and sub floor plumbing, new window security screens and other minor repairs.

An Adaptive Reuse Study has now been commissioned to evaluate options for reuse and the Conservation Committee will be involved in consultation on the study. A Scope of Works is also being developed for potential repairs to the deteriorated Goods Shed in the yard to the south of the station building.

Other works in the precinct will include demolition of the unsightly modern steel Works Depot building (at the southern end of the car park).

Extensive refurbishment of the station has been carried out under a separate program known as the Station Refresh Program.

The Conservation Committee is pleased with progress to date and there will be more to report shortly.



## BERRY CWA

Its always nice to end the year with good news.

CWA of NSW membership continued to rise again this year with seven new branches and an overall membership increase of around 300 members.

However less pleasing is the need for CWA to call upon the NSW Government to act now on drought relief for small businesses. In early August this year State Office wrote to the NSW Government seeking support for rural communities and small business, outlining a full policy proposal and a suite of options to assist small business suffering because of the drought.

CWA of NSW State President, Stephanie Stanhope said that the drought continues to bite and rural communities need the full support of the State Government. She states "Unfortunately, the Government has chosen not to implement further support for drought affected rural small businesses, relying instead on a recent infrastructure announcement to 'fast track' regional infrastructure projects as the answer to much needed rural stimulus during one of the worst droughts on record. Whilst welcome, we don't see this as meaningful drought relief and it is not what communities are telling us they need. What they are telling us they need is real and tangible help, delivered to their businesses directly, in order to help them survive and support their communities into the future".

The CWA of NSW is currently assisting farmers and farming-based contractors with the distribution of over \$13 million in grants for household support from donations, as well as Federal Government funding, which is now at a critically low level.

Looking ahead to next year, we will again be hosting our Australia Day Trivia competition. This free, fun quiz will be held at our rooms on Australia Day, Sunday, 26th January, 2020 commencing at 9am with the raising of the flag and morning tea followed by the Trivia competition. All are invited so do save the date in your diary.

Our first monthly meeting for 2020 is Friday 14th February, 2020 at 1pm followed by afternoon tea and all are welcome.

Compliments of the season to all from Berry Branch.

**Sandra Berner – Publicity**

The Town Crier - Page 13

**Surf**  
ELECTRICAL

UPPER KANGAROO RIVER

**OPEN 24/7 | AFTER HOURS CALL OUTS WELCOME**

CALL BILL OR DEBBIE:  
**(02) 4465 1841 / 0424 867 994**

✉ [surfelectrical@outlook.com](mailto:surfelectrical@outlook.com)

f Like us on Facebook!

Review us on Google ★★★★★

### AREAS OF SERVICE:

BERRY / KANGAROO VALLEY / CAMBEWARRA / GERROA  
GERRINGONG / KIAMA / SOUTHERN HIGHLANDS

- Fully Insured • Residential • Commercial • Industrial
- 20+ years experience • New Homes • Maintenance
- Renovations & Extensions • Repairs • Upgrades • Installations
- Switchboards • Safety/Maintenance Inspections • Troubleshooting

<https://surf-electrical-pty-ltd.business.site>

**ABN 70 845 107 241 LIC NO. 253095C**



# Calendar of Events

## UPCOMING EVENTS

**20 November** - Wednesday - History at Berry Two U3A lectures presented by Lloyd Pitcher: Aspects of Ancient China – the elevation of China's first emperor Qin Shi Huang and some teachings of Confucius and Turmoil in China 1800-1911. Wesley Uniting Church Hall, Albert St 10:00 - 12:00 \$8.

**30 November** - Saturday - CWA Berry Branch annual Christmas Stall, 9 - 3 pm, Broughton Court, Berry.

**7 December** - Saturday - 2:30pm - Shoalhaven Lydian Singers present J S Bach's Christmas Oratorio at Sts Peter & Paul Catholic Church, Kiama. TICKETS: \$30, Concession: \$25, Students: \$10, Under 15 FREE. Afternoon tea included.

<http://www.lydiansingers.org.au> Contact: 0412 219 895

**8 December** - Sunday - 2:30pm - Shoalhaven Lydian Singers present J S Bach's Christmas Oratorio at the Nowra School of Arts. TICKETS: \$30, Concession: \$25, Students: \$10, Under 15 FREE. Afternoon tea included. <http://www.lydiansingers.org.au> Contact: 0412 219 895

**13 December** - Friday - The Salvation Army will be conducting their annual Christmas Service at Merroo Union Church. Join us for light tea at 6.30 pm and the Service at 7.30 pm. Corner of Boxells Lane and Princes Highway, Merroo Meadow. The Sallies never disappoint. Contact Rae on 44 48 6048

**14 December** - Saturday - Berry Cool Estate Market, 16 Coolangatta Road – Nursery, Café, Food Trucks, Markets, Live Music, Children's Activities, Pets Welcome.

**24 December** - Tuesday - Carols in the Park - 7pm Berry Apex Park - bring a chair or rug and celebrate Christmas with the people of Berry. Organised by the Christian Churches of Berry - Enquiries: George Waddell 0410 025 702.

## REGULAR EVENTS

**Mainly Music** - for preschool-aged children and their carers. Every Tuesday during term time at 10am.

Venue Berry Community Church, Schofields Lane. \$5

**The Berry Computers for Seniors** meets in the Berry Uniting Church hall on the first and third Wednesdays of each month from 9.00 - 10.30am.

**The 'Third Wednesday Book Group'** will meet in the Community Library June from 4-6pm.

We bring along our favourite books or talk about our favourite authors and enjoy drinks and nibbles along the way. Everyone is welcome.

**The Berry Apple Users Group** meets on the 2nd Tuesday of the month at 7pm in the Friendship Room at the Uniting Church.

## Annual Events Guide for Berry 2020

For more information regarding each event please refer to the community group listing on the next page.

Registered Community Groups organising annual events are welcome to contribute and advise of further information or changes to listed information.

## Attention Community Groups & Advertisers

Please send in your event dates for 2020 to [towncrier@berryalliance.org.au](mailto:towncrier@berryalliance.org.au).

Anyone can advertise events in the Calendar of Events.

This is a service offered for free to our registered community groups and \$32 to everyone else.

MONTH	EVENT
<b>RECURRING MONTHLY EVENTS</b>	First Sunday of the Month <ul style="list-style-type: none"> <li>• Penwood Railroad Inc, a scenic miniature railway open from 10:30am till mid afternoon. 215A Princes Highway - Jaspers Brush NSW - Ph: 02 4464 1201</li> <li>• Berry Country Fair (Berry Markets). Approximately 200 stalls selling handmade products, arts and crafts, fresh produce and more. Berry Showground</li> <li>• Berry Cool Estate Market, 16 Coolangatta Road - Every second Saturday of the month. Nursery, Café, Food Trucks, Markets.</li> </ul>
<b>JANUARY</b>	
<b>FEB</b>	Annual Berry Show Berry Showground
<b>MARCH</b>	First Sunday in March is Clean Up Australia Day
<b>APRIL</b>	ANZAC Day Youth Week Easter Celebrations
<b>MAY</b>	Berry Celtic Festival, Berry Showground National Motoring Heritage Day, Berry Showground
<b>JUNE</b>	
<b>JULY</b>	
<b>AUGUST</b>	The Berry Camellia & Floral Show
<b>SEPTEMBER</b>	Berry Small Farm Field Day
<b>OCTOBER</b>	Berry Gardens Festival showcases beautiful gardens in and around the Berry area.
<b>NOVEMBER</b>	11th November - Remembrance Day Berry Men's Shed Annual Garage Sale
<b>DECEMBER</b>	Berry Merry Christmas Carols in the Park, Apex Park Rotary's New Year's Eve Fireworks Berry Showground

# Reference Guide

## SUSTAINABLE BERRY SUMMER 2019 - 2020

**FIRES:** Check the Rural Fire Service website; [rfs.nsw.gov.au](http://rfs.nsw.gov.au) for updates on fire bans and bushfire warnings. The website also offers planning tips. If you are in a bushfire zone ensure you are well informed of current conditions. ABC radio also broadcasts bushfire warnings.

Emergency alerts may be sent to your mobile phone, however this should not be relied on in isolation. [emergencyalert.gov.au](http://emergencyalert.gov.au) has information about the service.

## WATER RESTRICTIONS

Level 1 restrictions start from 2 December. This means gardens may be watered at any time by hand. Sprinklers may be used on a fixed timer. Hosing hard surfaces is banned. Vehicles and boats may be washed, using a hand held hose. Existing swimming pools may be topped up any time, on a fixed timer.

Check the Shoalhaven Water website to find up to date information about any changes in the level of restrictions; [shoalhaven.nsw.gov.au/Community/Water-Restrictions](http://shoalhaven.nsw.gov.au/Community/Water-Restrictions)

## ELECTRIC CAR CHARGING STATIONS

Berry has an NRMA charging station at the Bowling Club. There is also a Tesla dedicated charging station at Silos Winery. These chargers can be used by other brands of electric vehicles, with the purchase of an adaptor.

## SUSTAINABLE SHOPPING

**IGA stocks** If You Care (household cleaning, cooking and storage products, toothbrushes); Ansell eco-rubber gloves; Ecostore cleaning products; Safe toilet paper (paper wrapping).

**Nourish Kitchen + Lifestyle** stock beeswax wraps for food, as well as kits to DIY; White Magic cleaning and food storage products; Keepcups, Avanti, Teaology, Casa Barista and Earth Bottles for your take away coffees and other beverages.

**Flavours Shoalhaven refill** Morella Grove olive oil glass bottles. Take your own containers to Leaf Thai restaurant for meals, Il Locale for gelato, and the deli section at IGA. The Treat Factory will fill your container or glass jar for bulk dried fruit, nuts etc, during quiet periods. The Berry Farmers' Market has a plastic-free policy, so remember to take your own bags.

### *Some informative websites and apps:*

[www.modernslaveryregistry.org](http://www.modernslaveryregistry.org) to check on companies' labour supply chains.

[aptistworldaid.org.au](http://aptistworldaid.org.au) updates its ethical shopping guide annually.

[goodonyou.org.au](http://goodonyou.org.au) and [ethical.org.au](http://ethical.org.au) both have an app you can download to your smartphone.

[goodguide.com](http://goodguide.com) and [ethical.org.au](http://ethical.org.au) for healthier choices.

[plasticfreepantry.com.au](http://plasticfreepantry.com.au) has cleaning and storage products, plastic free, of course.

## BERRY WASTE DEPOT

The Depot accepts computer and electrical equipment, electrical leads, recyclable metal, smoke detectors, compact and fluorescent light bulbs, car batteries, motor and other oils, gas bottles, water- and oil-based paints and batteries free of charge. The depot also offers free garden mulch. There is a modest charge for recycling some items, such as green waste, mattresses, or white goods. Open Friday to Monday (except public holidays 8.00 am – 4.00 pm). The buyback program is open on Saturday and Sunday mornings only.

## SOFT PLASTICS RECYCLING

The REDcycle program collects suitable plastics to be transformed into outdoor furniture, signage, bollards and other products. You can recycle biscuit packets (outer wrapper); bread bags (without the tie); bubble wrap, cellophane and large sheets used to wrap furniture and other products for delivery; cling wrap; Australia Post plastic sachets; chip, chocolate and snack wrappers (including silver-lined) wrap; netting produce bags (remove metal clips); rice bags; clear plastic

wine bladders; squeeze pouches (eg baby food) with lid on; potting mix & compost bags; zip lock bags; and green (polypropylene) bags. Plastics should be clean, dry, and cut to A3 size in the case of larger items.

Not suitable for collection: rigid plastics; plastic containers & bottles; bread bag ties; medication blister packs; film negatives and x-rays; balloons; adhesive tape; tinsel; coffee bags; drinking straws; foil, foam and polystyrene; clear vinyl packaging (eg quilts & bedding); rubber and latex; foil-based wine bladders; and laminated materials. To learn more, visit the website: [www.redcycle.net.au](http://www.redcycle.net.au)

## OTHER RECYCLING

TerraCycle was established in 2001 as a means of dealing with hard to recycle items, with the goal of making these zero waste products. The company now runs programs in twenty countries, diverting plastics otherwise headed to landfill. TerraCycle has established separate collection programs including: cosmetic & make up packaging; stationery binders; contact lenses (over 100,000 pieces of waste diverted from landfill in Australia in its first year of operation); toothpaste tubes & toothbrushes; and coffee pods. To learn more visit the website: [www.terracycle.com.au](http://www.terracycle.com.au)

## ALTERNATIVES TO SINGLE USE COFFEE CUPS

Local cafes offering a discount when you bring your own reusable cup: Just Delicious, The Emporium Food Company, The Dairy Bar, Blue Goose Café (Gerrigong), Ninety One Junction (Nowra), Zest Café & Catering (Nowra), The Cake Store (Nowra)

Green Caffein is an initiative launched in August 2018 in Kiama, as a swap and go reusable cup system. Perfect for the days when you forget your own cup. Participating cafes include: Il Locale, the Blue Swimmer in Gerroa, and another forty cafes across the Illawarra region. More information about the program can be found on Green Caffein's Instagram or Facebook pages.

## ILLEGAL DUMPING

Contact Shoalhaven Council Ranger Services on 4429 3433 (after hours 4421 3100).

If the matter is urgent, contact the Environmental Protection Agency on 131 555

## NATIVE ANIMALS

WIRES does not recommend feeding native birds however during hot weather native birds appreciate a birdbath in the garden. Most birds eat a balanced diet of insects and nectar, seeds and fruit; feeding the wrong foods can negatively impact their health.

Leaving pet food out attracts rats, feral cats and aggressive birds like Indian Mynas. There is a growing population of Indian Mynas in Berry that are pushing out native birds.

The fox baiting program has allowed a resurgence of bandicoots locally and spotted tail quolls around the Barren Grounds Nature Reserve and Budderoo National Park. Local land managers who are interested in learning more about the Quollidor can contact Evelyn Osbourne at the Berry Local Land Service office on 4464 6015.

## MEDICATION AND SHARPS

Medically generated syringes, needles and sharps can be disposed of for free at the Berry Pharmacy. Take your sharps in a sealed puncture resistant container. The pharmacy will also safely dispose of out of date medication.

## LOCAL LIBRARIES

Shoalhaven Council's library bus is parked in Princess Street just past the School of Arts building, every Friday from 2.00 pm to 4.00 pm.

Berry Street Library in Broughton Place is sponsored by the Berry Alliance; borrow, read and return, or add a book for someone else to enjoy. There is a regular turnover, including children's books.

Berry Community Library at the Berry Uniting Church is open Mon and Wed 1-4 pm, Tues, Thurs, Fri 10 am – 1 pm.



# Community Groups

## BERRY COMMUNITY GROUPS

**Beaumont Rural Fire Brigade** 0416 754 272  
beaumontvrfb@gmail.com

**Berry Alliance Inc.** 0449 569 059  
PO Box 202 Berry 2535  
info@berryalliance.org.au www.berryalliance.org.au

**Berry Alliance Town Crier** 0428 037 572  
PO Box 202 Berry 2535 www.berryalliance.org.au  
towncrier@berryalliance.org.au

**Australian Labor Party Berry** 0429 012 796  
Shoalhaven Heads Branch. Meets 2nd Wednesday  
each month, 6.30 pm Hotel Berry  
secretarybshalp@gmail.com PO Box 474 Berry 2535

**Australian Red Cross** 4464 2479  
Honorary Secretary - Margaret Walsh  
21 Windsor Drive Berry - 1st Wednesday each  
month at 2.00pm - Berry Uniting Church

**Berry Chamber of Commerce & Tourism Inc.**  
PO Box 216 Berry 2535 4464 3122  
info@berry.org.au www.berry.org.au

**Berry Community Library** 0425 220 258  
berrycommunitylibrary@gmail.com

**Berry Courthouse Conservation Committee**  
PO Box 218 Berry 2535 0458 369 266  
functions@berrycourthouse.org.au  
www.berrycourthouse.org.au

**Berry Evening View Club** 4464 1191  
Secretary, PO Box 275 - sel4957@bigpond.net.au

**Berry Masonic Village Auxiliary Inc** 4464 1774  
Mail: 42 Albany Street Berry NSW 2535

**Berry Meals on Wheels** 4464 1774  
PO Box 221 Berry NSW 2535

**Berry Men's Shed** 4464 3956 / 4464 2619 A.H  
PO Box 103 Berry 2535  
richardcwiseman@hotmail.com

**Berry RSL Sub Branch**  
PO Box 3307 North Nowra 2541  
stuartchristmas@gmail.com

**Berry Rotary Club** 0404 812 002  
PO Box 81 Berry 2535 www.berryrotary.org.au  
Email: terry.delahunty@hotmail.com

**Boomerang Bags Berry** 0416 181 543  
Contact: Katrina Underwood 0416 181 543  
Contact: Elizabeth Dubbelde 0431 663 189

**Country Women's Association – Berry Branch**  
PO Box 321 Berry 2535  
Contact Emily Boorer 0417 423 018

**Conservation Committee for the Berry Railway  
Station Precinct** 0418 651 787  
janetfingleton@bigpond.com

**Berry Community Library** 0425 220 258  
berrycommunitylibrary@gmail.com

**Country Women's Association**  
Berry Branch - PO Box 321 Berry 2535 - 2nd Friday  
each month at 12.30pm in the CWA Rooms, Victoria  
Street. Contact Emily Boorer 0417 423 018

**Probus Club of Berry** 4464 3266  
PO Box 68 Berry 2535 berryprobus@gmail.com

**Slow Food Berry to Jervis Bay** www.slowfoodbjb.org.au  
Jenny Crosby 0424 615 948 or  
Marilyn O'Dowd 0416 018 977  
email info@slowfoodbjb.org.au

**Zonta Club of Berry** 0412 198 614  
PO Box 302 Berry www.zontadistrict24.org  
membryce@bigpond.com

## ARTS

**Australian Decorative Fine  
Arts Societies - Shoalhaven** 4464 3053  
PO Box 269 Berry NSW 2535  
shoalhaven@adfas.org.au

**Berry & District Historical Society Inc** 4464 3097  
PO Box 153 Berry 2535 www.berryhistory.org.au  
berrymuseum@bigpond.com

**Berry Spinners and Weavers** 0422 760 363  
Contact the secretary (Alison) on  
PO Box 377 Berry 2535  
berryspinnersandweavers@gmail.com

**Berry Silver Band (est. 1897)** 4465 1240  
Kaye - kayecj@westnet.com.au - Masonic Band Hall

**Knit with Love** 0404 562 772  
St Luke's Church Hall, 68A Princess Street,  
Contact: Lyn Oades - terryandlyn@gmail.com

## CHURCHES

**Berry Presbyterian Church** 4464 1020  
Isaac Jung - isaac.jung@hotmail.com  
www.presbyterianchurch.net.au

**Berry Uniting Church** 4464 2904  
77 Albert Street Berry - berryuniting@gmail.com

**Berry Community Church** 4464 2315  
8 Schofields Lane Berry  
info@berrycommunitychurch.org

**Meroo Union Church** 4448 6048  
Corner of Boxells Lane & Princes Hwy,  
Meroo Meadow. Contact Rae 4448 6048

**St. Luke's Anglican Church** 4464 1058  
68A Princess St, Berry 2535 www.berry.anglican.asn.au  
office@berry.anglican.asn.au

## EDUCATION AND PLAYGROUPS

**Berry Apple Users Group** 0466 717 254  
PO Box 103 Berry 2535  
Berry Uniting Church Hall, 77 Albert Street  
Email: berryappleusersgroup@gmail.com

**Berry Computers for Seniors** 4421 3270  
PO Box 103 Berry 2535  
Uniting Church Hall, 77 Albert Street Berry  
berrycomputersforseniors@gmail.com

**Berry Community Pre-school** 4464 1764  
PO Box 143 Berry 2535  
berrypreschool@bigpond.com  
www.berrypreschool.org.au

**Mainly Music** 0401 151 820  
Berry Community Church Hall

## GARDENING AND LAND CARE

**Berry & District Garden Club** 4464 1191  
PO Box 122 Berry 2535  
St Luke's Church Hall, Princess Street  
Mary Seelis Secretary www.berrygardens.org.au

**Berry Landcare** 4464 2241  
PO Box 422 Berry NSW 2535  
berrylandcare@gmail.com

**Brogers Creek Landcare** 4465 1482  
543 Wattamolla Rd Wattamolla  
andrewfitzsimons@det.nsw.edu.au

**Gateway Community Garden**  
141 Woodhill Mountain Road  
Contact: Laurie Watson 0423 267 957

**Berry Public School Plant Propagation Nursery**  
Lyn 02 4464 3911 - lyn-clark@outlook.com.au

## RECREATION

**Berry Bridge Club INC** 4464 2742  
PO Box 366 Berry 2535  
bandroberts@bigpond.com

**Berry Camera Club** 0488 031 961  
Meetings on 4th Wednesday of Each Month  
6:00pm @ Berry Bowling Club

## SPORT

**Berry Men's Bowling Club** 4464 2995  
PO Box 139 Berry NSW 2535 Club

**Berry Tennis Club**  
PO Box 133 Berry NSW 2535  
Email: berrytennis@hotmail.com

**Berry Riding Club** 0410 506 143  
445 Coolangatta Road Berry 2535  
jasiy@bigpond.net.au www.berryridingclub.com

**Shoalhaven Heads Surf Life Saving Club**  
Mackintosh Street Shoalhaven Heads  
www.headssurf.com.au Facebook:  
Shoalhaven Heads Surf Life Saving Club.  
Phone: 0432 331 915 or  
info@headssurf.com.au

**Berry Women's Bowling Club**  
Berry Bowling Club. Contact Heather Fealy  
4464 3624 or Pam Tulloch: 4464 2284



# EMERGENCY 000

Police Assistance Line (Non-Urgent Police Reports) 131 444  
Berry Police 4464 2175  
Fire & Rescue NSW 4464 1008 or 000

Rural Fire Brigade (Broughton Vale) 4464 1522  
SES For Emergency Help in Floods & Storms 132 500

## RECENT DEVELOPMENT APPLICATIONS AND APPLICATION DETERMINATIONS FROM SHOALHAVEN CITY COUNCIL



The Berry Alliance and Town Crier are continuing to bring the entire town the Development Applications and those determined over the last few weeks as the Council provides them.

Please use the Council's DA Tracking system by going to their web site: <https://shoalhaven.nsw.gov.au/planning-amp-building/development-application-tracking> Now enter the DA number from the left hand column. You can view all the available details there as they arise and you can make a submission on any DA.

Please note: We have investigated some anomalies and have found that those applications and determinations commencing with CD have been determined as compliant with the rules by a licenced person outside council. The DA therefor has not been submitted to Council and will often appear in these lists only after they have been determined and you will not, as we did, find that there are often CD applications that are submitted a few days after they have been determined. This means that neighbours nor anyone is advised that a DA has been submitted so are denied their right to make a submission. The DA and all the details will also not be on the DA Tracking pages from Council.

For this reason we will probably not bother publishing the application details in the future, just the determination.

The Berry Alliance will also discuss this at our next meeting with a view to making a submission to Council requesting an improvement to this situation and to allow neighbours to know the application is in and allow them to make a submission.

**Rick Gainford – Secretary – Berry Alliance Inc and Berry Town Crier**

### DEVELOPMENT APPLICATIONS

CD19/1492	15-10-2019	Single Storey Dwelling	85 Parker Crescent Berry
DA19/2023	15-10-2019	Dwelling Additions – Covered Decks	5 Thomas Close Berry
SF10769	18-10-2019	Two Lot Subdivision	63 Parker Crescent Berry
DA19/2043	21-10-2019	In Ground Swimming Pool	40 Borrowdale Close Berry
DA19/2060	25-10-2019	Renovate Shed & Silo & Convert Storage to Workshop	8 Homestead Lane Berry
CD19/1518	25-10-2019	Dwelling Additions – Link to Studio and Shed	290 Beach Rd Berry
CD19/1523	29-10-2019	Shop 1 Fit Out “Bed Bath n Table”	62 Albert Street Berry
DA19/2079	31-10-2019	Six (6) Animal Shelters & Farm Building at Equine Centre	20 Schofields Lane Berry
CD19/1531	1-11-2019	Two Storey Dwelling	Tigman St Berry
DA19/2093	5-11-2019	Split Level Dwelling	44 Parker Cres. Berry
CD19/1541	5-11-2019	Detached Studio & In Ground Swimming Pool	2 Gillam Street Berry
DA19/2096	5-11-2019	Dwelling Alterations and Additions	46 Albert St Berry
DA19/2101	6-11-2019	Jetty in Dam 8 Homestead Lane Berry	
CD19/1543	6-11-2019	Two Storey Dwelling	79 Parker Cres. Berry
DA19/2104	7-11-2019	Two Additional Tourist Accommodation Units	17 Prince Alfred St Berry
DA19/2102	7-11-2019	Dwelling Alterations and Additions	15C Roxbrough Rd Far Meadow
CD19/1537	4-11-2019	In Ground Swimming Pool & Cabana	35 Croziers Rd Jaspers Brush

### DEVELOPMENT APPLICATIONS DETERMINED

CD19/1518	21-10-2019	Approved	Dwelling Additions – Link to Studio & Shed	290 Beach Road Berry
CD19/1523	21-10-2019	Approved	Shop 1 Fit Out “Bed Bath n Table”	62 Albert St Berry
DA19/1731	25-10-2019	Approved	Accessible Toilet CWA Hall	79 Victoria St Berry
DA19/1651	25-10-2019	Approved	Free-Standing Signage	19 Austral Park Rd Broughton
DA19/1814	21-10-2019	Approved	In Ground Swimming Pool	10 Tindalls Lane Broughton
DA19/1396	29-10-2019	Approved	Single storey Dwelling & Swimming Pool	Moss Vale Rd Beaumont
CD19/1531	28-10-2019	Approved	Two Storey Dwelling	Tigman St. Berry
CD19/1541	28-10-2019	Approved	Detached Studio & In Ground Swimming Pool	2 Gillam S. Berry
CD19/1537	31-10-2019	Approved	In Ground Swimming Pool & Cabana	35 Croziers Rd Jaspers Brush
DA19/1778	31-10-2019	Approved	Two Storey Shed & Access Driveway	108 O’Keeffes Lane Jaspers BrushDA19
DA19/1801	7-11-2019	Approved	Dwelling Additions	230 Beach Rd Berry
SF 10737	6-11-2019	Approved	Boundary Adjustment	90 & 90B Mullers Lane Berry

FOR DA'S VISIT: [www.berryforum.org.au](http://www.berryforum.org.au)



# Raine&Horne Berry

The Team at Raine & Horne Berry wish you a very happy and safe Christmas!

We would like to thank our vendors, purchasers, landlords and tenants for helping to make 2019 a very successful year.

This year Raine & Horne Berry are welcoming a new tradition:

## **Our very own 12 Days of Christmas!**

Commencing 2nd of December, for 12 weekdays, there will be a chance to win a daily prize along with going in the draw to win our Major Prize of a \$200 voucher for Tre Bambini, Berry!

### **How to Play:**

- A daily clue will be posted on both our Facebook & Instagram page, as well as being placed in our office front window.
- The clue will lead you to a shop within the Berry township where one lucky person will collect a ticket.
- You will then bring your ticket along to our Raine & Horne Berry office for the collection of your daily prize & go into the draw for our Major Prize.
- It is first in best dressed, so keep your eye out for our daily clues for your chance to win!



## **& Christmas**



2/65 Queen Street, Berry  
Tel: 02 4464 1300

Jacqui Crapp  
Kimberley Clarke  
Tracey Hain  
Larni Mulry

Principal/Sales  
Sales  
Property Manager  
Property Manager

P: 0429 104 011  
P: 0418 204 518  
P: 02 4464 1300  
P: 02 4464 1300



**100 YEARS  
PEOPLE HELPING PEOPLE  
1914-2014**

#### RECENT BRANCH ACTIVITIES

The Branch was represented by members at the Remembrance Day Service on Monday 11th November at the Berry Cenotaph. We also laid a wreath. We will be marching in the Berry Merry Christmas Parade on the 11th December.

As usual at Christmas we will donate hampers for those in need. This time they will go to the Homeless Hub in Nowra which accepts donations of food for the homeless in the Shoalhaven. We also buy two books for the library at Berry Public School.

The Big Cake Bake collection at the October markets was wonderful. The result far exceeded expectations, so a big thank you to all who helped. Also, a big thank you to the Chitty Chitty Bang Bang car, who donated their takings from that day to Red Cross. The result was \$2039.40 which goes to Red Cross general funds.

Edna Watt received another wonderful donation of 7 rugs for the homeless from the Sussex Inlet Neighbourhood Centre.

#### THE PERFORMANCE OF AUSTRALIAN RED CROSS

Here are a few more of the achievements of Red Cross over the last year:

- 44 clients on the Trafficked Peoples Program. They are mostly trafficked for labour or sexual exploitation or forced marriage.
- 1,972 individuals supported on the Humanitarian Settlement Program
- 1,078 cases of Restored Family Links in Australia
- Many others were supported by the Let's Talk Program, the Learner Driver mentor Program, and such social inclusion programs as Telecross, Telechat, the Community Visitors Scheme and the Post Release (from gaol) Program.

#### THE FIRE SEASON

Red Cross's GET PREPARED APP helps you access information and tools to complete an emergency plan so you are prepared for such emergencies as fire, flood and storms and can contact those who can help you. Just go to the Red Cross Website.

#### BECOMING A MEMBER OR VOLUNTEERING

If you wish to find out about becoming involved with or volunteering with the Red Cross contact the Berry Branch of the Red Cross (see Community Groups page of Town Crier for contact details), the Nowra Red Cross Office (1800621433) in Graham St Nowra or go onto the Red Cross website.

## Berry & District Garden Club News

SECRETARY MARY SEELIS 4464 1191 VISIT US ON [www.berrygardens.org.au](http://www.berrygardens.org.au)

A successful Berry Gardens Festival has been followed by the presentation of donations from gate takings at our November meeting. All the hard work is well rewarded when representatives of the organisations nominated by the Open Garden owners receive their cheques and explain how the money will be used. A social gathering on 26 November will be the final club activity for the year.

The glorious combination of lilac, scarlet and gold of Jacarandas, Illawarra Flame Trees and Silky Oaks is heralding the arrival of Summer. Red Cedars have also been flowering but it was not their sprays of tiny cream flowers that attracted the attention of timber getters in the early days of colonial settlement. The pink flush of their new spring growth revealed their presence and threatened their existence as they were plundered for furniture and fittings.

Now protected, the Cedars are returning but it will be a long time until they are once again the giants of our forests. This ability of nature to reassert itself and to triumph over the built environment is recognised in the new George Street Park. An installation by noted local sculptor Michael Purdy, celebrates a red cedar breaking apart a sandstone block and surrounding urban paving. A message of optimism and hope for the future is also conveyed with the knowledge that, although the tree is young like all the other park trees, it will continue to grow and will be enjoyed by future generations.

An opportunity to sponsor a tree in the park for \$100 still exists, just call Treasurer Mary Seelis on 4464 1191. We would like to thank the people of Berry for their support throughout the year and to wish you a Merry Christmas. If you would like to know more about the Club and its activities, visit us on [www.berrygardens.org.au](http://www.berrygardens.org.au)



*Butterfly  
Therapies*

*Julianne Webster*  
SHOALHAVEN HEADS

- LEARN REIKI
- REIKI HEALING
- ENERGY HEALING
- CHAKRA HEALING
- MINDFULNESS
- REIKI RETREATS
- WORKSHOPS

[julianne@butterflytherapies.com.au](mailto:julianne@butterflytherapies.com.au)  
[www.butterflytherapies.com.au](http://www.butterflytherapies.com.au)  
[@butterflytherapies](https://www.instagram.com/butterflytherapies)



0427 462 159







# Christmas Card Pictures

"Please watch me Dad!" my little 3-year-old says as she attempts to kick her little soccer ball into our little soccer net. She is all smiles in her own world, and as she invites me in it's one of those moments that even me, in my normal 'distracted Dad' mode, doesn't want to miss. There are moments that we cherish with our children, our nieces and nephews, or our grandkids - moments when they are young and cute and we don't ever want them to grow up.\* Like when my 6 year old inspired by yet another episode of Bluey, puts down the iPad and sets up a hospital for an early baby, or dances around the house with her sister playing "Keepy Uppy" with balloons. Or like when we are all huddled together in a night time camping adventure. These moments seem to slip by as they grow older. Still they crop up now and again, but it would be on pain of death to mention any stories of my 11-year-old. They slip by and we sometimes we wish we could hang on to these childhood moments, where we can still pick them up, hold them and comfort them, and feel we have some control.

I wonder if some of these emotions transfer to our experience of Christmas - where we celebrate the birth of a little child. The pictures of cute cuddly sheep surrounding baby Jesus only serve to reinforce a kind of sentimentality to it all. I wonder if sometimes we want to hold onto this picture of Jesus. But of course, Jesus did grow up and his claims as a man are far from cute or cuddly or sentimental. Easter always follows Christmas. He claims to be able to forgive sins, to shield us from judgement, and by his death lead us to God.

But actually, it's all there in the Christmas narrative. Before Jesus was born, his mother Mary was told to "give him the name Jesus, because he will save his people from their sins". As we celebrate Christmas this year let's see if we can let go of the Christmas card pictures, and see Jesus grow to fulfil his mission.

Simon Chaplin

\*In the interests of full disclosure there are times when I feel the exact opposite...normally leading up to dinner time or bedtimes!

You're invited to a Christmas Service at St Luke's  
Christmas Eve: 11pm Christmas Day 8am and 9:30am

## 2019 KIAMA ELECTORATE COMMUNITY RECOGNITION AWARDS PRESENTED

Member for Kiama Gareth Ward MP hosted the 2019 Kiama Electorate Community Recognition Awards at The Kiama Pavilion.

"Our region is truly blessed with talented and passionate local people. Volunteers don't seek recognition, but they deserve every ounce of commendation for their efforts.

"Today was our chance to pay tribute to so many deserving and dedicated people.



### Outstanding Local Volunteer

**Bill Seelis of Berry** – Bill is being recognised for his tremendous involvement with a number of various activities and organisations in the Berry community – including The Rotary Club of Berry including Finance Committee for the District. Bill was also instrumental in getting the Children's Nature Play Parkland project off the ground. He is involved in organising the Berry Small Farms Field Days, Berry Celtic Festival, Australia Day Breakfast, NYE Fireworks, Berry Show Society, Treasurer of the Berry Parks Management Committee and Treasurer of the Berry Chamber of Commerce and Tourism. He is also a devoted husband, father, grandfather and all round great bloke. Congratulations and well done Bill!

#### MEDIA:

Kiama Electorate Office (02) 4232 1082  
or Ben Blackburn 0423 466 358



Growing in faith, hope  
and love

Senior Minister Rev. Simon Chaplin

#### Worship Services

##### Sundays

- Traditional: 8.00 am.
- Contemporary: 9.30 am with Kids' Church. Great for families.

##### Thursdays

- Holy Communion: 11.00 am on 1st, 3rd and 5th Thursdays.
- Quiet Prayer: 11.00 am to 11.45 am 2nd and 4th Thursdays.

#### Bible Study Groups

- Women, men, and mixed groups.

#### Activities

- Knit with Love: 1.00 pm, Fridays.
- Card Making.
- Exercise Classes.
- Lunch on the Verandah: 3rd Sunday each month.

Visit us

#### St Luke's Church

68a Princess Street Berry

Phone 4464 1058

Email office@berry.anglican.asn.au

www.berryanglican.asn.au

## DO YOU HAVE A 2020 VISION?

There's a lot of publicity these days about the younger generations being born into and growing up with the digital age. But this does not mean that previous generations have to be left behind. The Berry Computers for Seniors group aims to use and enjoy the benefits of computers, tablets and smartphones and to encourage the undertaking of more advanced activities on such devices.

It is well recognized that 20/20 vision is the ultimate. Although we can't help with your visual acuity, in the year 2020 we can help you improve your insight into the use and benefits of:

- iPhones, iPads and Apple computers;
- android mobile phones, tablets and computers; and
- word processing and spreadsheeting.

The aim is to give members a basic understanding of the use of Apple and android devices for different applications whilst maintaining privacy and security. No previous knowledge is required as the content of the various classes is determined by the level of participants' experience.

Classes in 2020 will be held in the hall of Berry Uniting Church on the first and third Wednesdays of each month, commencing on Wednesday 5 February. Classes run from 9.00 – 10.30am followed by morning tea.

By way of a special start to the new year, the South Coast PC Doctor Richard Findsen will hold a tutorial on the Windows 10 operating system. This will be a rare opportunity to experience a mind-blowing hands-on insight into Windows 10 and will show you how to maximise its benefits. Bookings for this session are essential.

To book a place on the Windows 10 tutorial and/or one of the other classes, or for more information about any of the above, please contact President David Wastie on 0414 982 010 or Maree Watson on 4464 1703



# Slow Food®

## Berry to JB

Recently members and friends enjoyed a long lunch at Mountain Ridge Winery. A fabulous day was shared by all with great company, delicious food plus a glass or two of the vines finest.

### UPCOMING EVENTS

#### 8 December

Terra Madre (@ the Kiama Pavilion – Come along and enjoy Terra Madre which is the International celebration of Mother Earth's bounty bringing the pleasure of good, clean and fair food to local communities. In 2019 Terra Madre is organised by Slow Food Saddleback and supported by Slow Food Berry2JB, South Coast and Canberra groups. The guest speaker will be: Mahlah Grey of The Pines local micro dairy, cheese and gelato makers. Mahlah will share her experiences on the farm and at Slow Food's recent International's Cheese Forum and Workshops in Italy.

Try Booking <https://trybooking.com/BGGHQ>

#### 14 December - Christmas Drinks for Members

#### 29 February 2020 - Annual Cocktail Party – reserve the date

We are delighted and proud to announce that our Committee's work in promoting local sustainable food along with your attendance of our events and fundraisers has allowed us to provide much needed food to the needy in our community for the end of year Christmas / Holiday Season.

As 2019 draws to a close the Slow Food Committee would like to take this opportunity to thank you all for your support during the year.

With annual memberships, together we can make food better ... slowly ... but surely.

**If you would like more information on our planned Calendar of Events or to JOIN then please contact Marilyn O'Dowd 0416 018 977**

**or email [info@slowfoodbjb.org.au](mailto:info@slowfoodbjb.org.au)**

**or visit our website [www.slowfoodbjb.org.au](http://www.slowfoodbjb.org.au)**



As you read this note we will be well into the swing of the Christmas season. How fast our year has gone!

If you would like to come along to mainly music, we run from 10.00 am each Tuesday morning during the school term at a cost of \$5.00 per family at 8 Schofields Lane Berry. For more information contact [trishr.nicholson@gmail.com](mailto:trishr.nicholson@gmail.com)

Many of you are aware that the group has been supporting the Narrabri mainly music group for the past 6 months and we were able to give them extra support for the Christmas season and for that we can only say 'Thank You'.

And lastly, I would want to say a big Thank You to the loyal team members who give so generously of their time and support over the many years. To all those families we have come to know over the years may I take this opportunity to wish you and your loved ones a very Happy Christmas.

Trish Nicholson

## Exclusive deals only available at this agency!

- TRIPADEAL and CRUISECO PACKAGES

- Bucket list adventures at unbelievable prices

- South Coast Cruise and Travel, delivering Travel to the South Coast for over 35 years



21 Kinghorn St, Nowra, NSW | [info@sccruiseandtravel.com.au](mailto:info@sccruiseandtravel.com.au) | 1300 136 044

The only TRIPADEAL and CRUISECO Specialist Agency in the Shoalhaven.

**cruiseCO**  
The Cruise Specialists

**Trip a Deal**

**SOUTH COAST CRUISE & TRAVEL**



## Teela Reid and Thomas Mayor Come to Berry

### For a Public Forum

### "Finding the Heart of the Nation"

#### The Uluru "Statement from the Heart" & Indigenous Constitutional Recognition

In December this year, Berry Uniting Church will host two strong emerging voices within the new generation of Aboriginal leaders. They are generously making time to come to Berry to help illuminate the real heart of the Uluru Statement, and clarify its role in the current debate around constitutional Indigenous recognition, truth telling and an Indigenous voice to parliament - a debate vitally important for all Australians.



**Teela Reid**, is a Wiradjuri and Wailwan woman, lawyer & activist born & raised in Gilgandra NSW. A lawyer with experience in criminal, civil & administrative law, Teela was involved in the Constitutional dialogue process that culminated in the Uluru Statement from the Heart. Teela fearlessly took former Prime Minister Turnbull to task on Q&A after his dismissal of the Statement from the Heart.

**Thomas Mayor**, is a Torres Strait Islander, born and raised on Larrakia land, Darwin. An official of the CFMMEU, he was invited to attend the First Nations' dialogue on constitutional recognition. He carried the

Uluru Statement to Aboriginal and Torres Strait Islander populations throughout the nation. Author of "Finding the Heart of the Nation"



#### ULURU STATEMENT FROM THE HEART

We, gathered at the 2017 National Constitutional Convention, coming from all points of the southern sky, make this statement from the heart:

Our Aboriginal and Torres Strait Islander tribes were the first sovereign Nations of the Australian continent and its adjacent islands, and possessed it under our own laws and customs. This our ancestors did, according to the reckoning of our culture, from the Creation, according to the common law from 'time immemorial', and according to science more than 60,000 years ago.

*This sovereignty is a spiritual notion: the ancestral tie between the land, or 'mother nature', and the Aboriginal and Torres Strait Islander peoples who were born therefrom, remain attached thereto, and must one day return thither to be united with our ancestors. This link is the basis of the ownership of the soil, or better, of sovereignty. It has never been ceded or extinguished, and co-exists with the sovereignty of the Crown.*

How could it be otherwise? That peoples possessed a land for sixty millennia and this sacred link disappears from world history in merely the last two hundred years?

With substantive constitutional change and structural reform, we believe this ancient sovereignty can shine through as a fuller expression of Australia's nationhood.

Proportionally, we are the most incarcerated people on the planet. We are not an innately criminal people. Our children are alienated from their families at unprecedented rates. This cannot be because we have no love for them. And our youth languish in detention in obscene numbers. They should be our hope for the future.

These dimensions of our crisis tell plainly the structural nature of our problem. *This is the torment of our powerlessness.*

We seek constitutional reforms to empower our people and take a *rightful place* in our own country. When we have power over our destiny our children will flourish. They will walk in two worlds and their culture will be a gift to their country.

We call for the establishment of a First Nations Voice enshrined in the Constitution.

Makarrata is the culmination of our agenda: *the coming together after a struggle*. It captures our aspirations for a fair and truthful relationship with the people of Australia and a better future for our children based on justice and self-determination.

We seek a Makarrata Commission to supervise a process of agreement-making between governments and First Nations and truth-telling about our history.

In 1967 we were counted, in 2017 we seek to be heard. We leave base camp and start our trek across this vast country. We invite you to walk with us in a movement of the Australian people for a better future.

The Forum will be held at 3pm, Saturday 7<sup>th</sup> December 2019 in the Main Hall at Berry Uniting, 77 Albert Street. Admission price is according to means, from \$5 to \$25. Tickets from Berry Music Centre or book at: <https://www.trybooking.com/BGEFE>

Any profits go to Waminda, Nowra.





## Shoalhaven Announce 2020 Program

ADFAS is all about the arts.

At their recent Annual General Meeting ADFAS announced their 2020 Program and elected a new committee. They are planning eight Thursday evening lectures and two Friday Interest Days. All lectures are held at the Berry School of Arts, Alexandra Street, Berry. 2020 Subscription is \$150.00 per person or visitors are welcome to individual evening lectures, \$30.00, cash or card, at the door. A light supper is included. There is an additional cost for Interest Days. You are most welcome to join us. To have an email version of our Program sent to you please contact: saa36@bigpond.com

<b>27 Feb - 7.30pm</b>	Kathleen Olive	Renaissance Italian Villas and Gardens and their Afterlives
<b>26 Mar - 7.30pm</b>	Catherine Wallace	The Tale of Two Barbaras: Barbara Hepworth and Barbara Tribe
<b>30 Apr - 7.30pm</b>	Sally Butler	Asia Pacific Contemporary Art
<b>4 Jun - 7.30pm</b>	Alan Read	Phrases and Sayings – The Etymology of London
<b>30 Jul - 7.30pm</b>	Kate Strasdin	The Foundations of Fashion
<b>Fri 31 Jul - 10.00am</b>	Kate Strasdin	Half Interest Day – Two lectures A Cut Above – Traditions of Tailoring
<b>3 Sept - 7.30pm</b>	Dr Caroline Shenton	Packing Up the Nation
<b>1 Oct - 7.30pm</b>	Sandy Burnett	The Age of Jazz
<b>Fri 2 Oct - 10.00am</b>	Sandy Burnett	Full Interest Day – Three lectures Classical Music Crash Course
<b>5 Nov - 7.30pm</b>	Kathy McLauchlan	Gauguin's Discovery of the Primitive

The 2020 Program will be on our website soon: [www.adfas.org.au/shoalhaven](http://www.adfas.org.au/shoalhaven)



Left: 27 February lecture – Renaissance Italian Villas and Gardens and their Afterlives  
Right: ADFAS Shoalhaven 2020 Committee – Rowan Hollingworth, Suzanne Silver, Lisa Talau, Ted Jarrett, Ian Cole, Phyllis Agam, Stan Keough, Richard Wiseman. Absent: Jennifer Moss, Christine Jourden.



Information on the Society can be found at [adfas.org.au/shoalhaven](http://adfas.org.au/shoalhaven)

[www.adfas.org.au/shoalhaven](http://www.adfas.org.au/shoalhaven) Email: [shoalhaven@adfas.org.au](mailto:shoalhaven@adfas.org.au)



The thousands of seeds produced by native plants each year are primarily the food source for local wildlife.

When we grow local native plants, we are planting food and habitat for local birds, animals, bees, butterflies, moths and other insects at all stages of their life cycles.

Plant prop always welcomes seeds that are collected from naturally occurring local plants on your property. During the summer, the seed from the following plants will ripen and be ready for collection for propagation or storage.

**Plants with hard seeds enclosed in pods.**

**Collect brown/black pods in paper bags.**

Acacia binervata – 2 veined hickory  
Acacia maidenii – Maiden's wattle  
Acacia Melanoxylon – Blackwood  
Goodia lotifolia – Clover tree  
Hardenbergia violacea – Hardenbergia  
Indigofera australis – Native indigofera  
Kennedia rubicunda – Dusky coral pea  
Platylobium formosa – Handsome flat pea

DECEMBER 2019

## Seed collection during the summer months

**HELP NEEDED** - Summer is a peak season for seed collection for the nursery.

**Plants with seeds developing inside fleshy fruits.**

**The fruit is ripe when it feels soft when gently squeezed between the finger tips. Collect fruit in plastic bags.**

Billardiera scandens – Apple dumpling  
Clerodendrum tomentosum – Hairy clerodendrum  
Diospyros australis – Black plum  
Glochidion ferdinandii – Cheese tree  
Hibbertia scandens – Snake vine  
Omolanthus populifolius – Bleeding heart  
Myrsine howittiana/variabilis – Muttonwood  
Planchonella australis – Black apple  
Synoum glandulosum – Scentless rosewood

Label bags with plant name, date and location, a contact name and number in case clarification is needed and deliver to the nursery or school office or contact [lyn-clark@outlook.com.au](mailto:lyn-clark@outlook.com.au) to arrange for collection.

If you are interested in collecting, but are not sure of the identification of plants or how to go about collecting, call in to the nursery on Wednesday from 1.00- 4.00pm or Thursday from 3.00 – 4.00pm and the volunteers will be pleased to assist.

[www.berryalliance.org.au](http://www.berryalliance.org.au)

The Town Crier - Page 23



# BERRY TOWN CRIER

## Keeping Berry Informed

The Town Crier is a community newspaper produced monthly by the Berry Alliance. Our current circulation is 2400 copies. The Town Crier is distributed in and around Berry. Additional copies are given to shops, cafes, hairdressing salons, doctors and restaurants within the township to alert tourists as to what's happening in Berry.

The Berry Alliance would like to thank advertisers for their support. It is only through advertising fees, subscriptions and sponsorships that our community paper can continue to provide such communication.

## ADVERTISING RATES DISPLAY ADVERTISEMENTS



1 Column - Single rate = \$110 or  
Repeat rate = \$297 (\$99 x 3 issues)  
Dimensions: 10cm high x 6cm wide

2 Column - Single rate = \$143 or  
Repeat rate = \$363 (\$121 x 3 issues)  
Dimensions: 10cm high x 12.5cm wide

3 Column - Single rate = \$176 or  
Repeat rate = \$495 (\$165 x 3 issues)  
Dimensions: 10cm high x 19cm wide

Full Page - Single rate = \$341 or  
Repeat rate = \$858 (\$286 x 3 issues)  
Dimensions: 27.7cm high x 19cm wide

\*REPEAT RATE APPLIES TO 3 OR MORE ISSUES WITH NO CHANGES AND ONE INVOICE.



## TOWN CRIER CLOSE OFF DATES

TOWN CRIER CLOSE OFF DATE FOR ADVERTISING AND COMMUNITY GROUP ARTICLES. 5PM DEADLINE	DELIVERY WEEK OF TOWN CRIER
FEBRUARY - 15 JANUARY	24 JAN (26 AUST. DAY)
MARCH - 12 FEBRUARY	24 FEBRUARY
APRIL - 18 MARCH	30 MARCH
MAY - 15 APRIL	27 APRIL
JUNE - 20 MAY	1 JUNE
JULY - 17 JUNE	29 JUNE
AUGUST - 15 JULY	27 JULY
SEPTEMBER - 19 AUGUST	31 AUGUST
OCTOBER - 16 SEPTEMBER	28 SEPTEMBER
NOVEMBER - 14 OCTOBER	26 OCTOBER
DECEMBER - 18 NOVEMBER	30 NOVEMBER



# TRADES & SERVICES DIRECTORY

## Canine Cardio

Dog Walking & Animal Home Care

Dog Walking | Pet Minding | Doggy Daycare | Overnight Stays

Annette Brooker

0418 477 438

info@caninecardio-homework.com.au  
www.caninecardio-homework.com.au



## Television Antennas SHOALHAVEN ANTENNAS

Servicing Berry and surrounding areas.

- Digital Upgrades
- New Installs
- TV Tuning
- Repair existing systems
- Add Phone/TV Outlets



Ph: 0410 526 672 Paul 0424 243 005  
Fax: 02 4422 6672

WINDOW  
& GUTTER  
CLEANING  
HOUSE  
WASHING

CALL JAMIE  
FOR FREE  
QUOTE

0413 582 948



PROMPT, RELIABLE SERVICE



## ROB PACKER POND & DAM CARE

- Algae & weed control
- Pumps & filtration
- Fish & plants
- Maintenance & repairs

0409 550 741

## GETTIN' IT DONE! TREE SERVICES

TREE REMOVALS • TREE PRUNING  
BLOCK CLEARING • WHOLESALE MULCH  
STUMP GRINDING • CHERRY PICKER HIRE

JASON 0432 281 063  
WWW.GIDTREESERVICES.COM.AU



~ Specialising in gentle, low force techniques ~

SAFE, EFFECTIVE TREATMENT FOR:

- All ages; from babies through to the elderly.
- Headaches/migraines
- Back/neck pain
- Postural problems
- Whiplash
- Scoliosis

EFTPOS available

HICAPS now available

57 Queen Street • Phone: 4464 3414



## MICHAEL HILL PAINTER & DECORATOR

Quality Work Guaranteed

Domestic Commercial Industrial

ABN 95 969 204 488 Lic No 121389C

0402474569

- Specialising In
- New/Old work
  - Feature Walls
  - Roofs
  - Texture Coating
  - Heritage

Quality Laundry



Quality Linen

One Little Peg, Kangaroo Valley offers  
Laundry Services and Linen Hire  
at guaranteed competitive rates.

Pick up and delivery available.

Open Monday to Friday, 9am to 4pm

Laundry: 0408 111 PEG (0408 111 734)

Linen Rental Enquiry: 0402 746 927

Email: onelittlepeg@gmail.com

## AIS CERTIFIERS

FAST TRACK  
BUILDING APPROVALS

SWIMMING POOL  
COMPLIANCE CERTIFICATES

TONY LEWIS

0417 372 728 • 4421 0004

info@accreditedinspectionsservices.com.au

## THE BOUTIQUE GYM

Personal Trainer Jen Miller

117 North Street,  
Berry NSW 2535

☎ 0413 648 943

jenmiller65@hotmail.com



LOCAL • COUNTRY • INTERSTATE

Experience a New Level of Professionalism

Phone 04 2864 3557 or 4464 3557

## Four Legged Friends PET FEEDING SERVICE

For Horses, Dogs, Cats, Birds  
& all other domestic pets

Megan White  
dip in animal care

0407 407 328

whitewolf99@bigpond.com

Established: 1995

• FEEDING • EXERCISING • RUGGING

• GARDEN • MAIL • GARBAGE

www.fourleggedfriends.com.au



All Creatures  
Mobile Vet



- Convenient pet health checks and vaccinations
- Compassionate euthanasia at home
- Complete range of Veterinary services
- Pick up and drop off service when your pet needs to visit our hospital
- No call out fee
- Emergency service available
- Service area from Albion Park to Milton NSW

Personalised Veterinary care at home

(02) 4464 1899 www.allcreaturesmobilevet.com.au

## SPACE AVAILABLE

CONTACT THE EDITOR

0428 037 572

towncrier@berryalliance.org.au

gerringong physiotherapy  
nowra central physiotherapy  
shell cove physiotherapy  
kiama physiotherapy

4234 4666

www.gerringongphysio.com



# TRADES & SERVICES DIRECTORY

## Vaughn's Lawn & Garden Service



- Local knowledge
- Professional service
- Fully insured

0408 863 776

[www.vaughnsgardening.com.au](http://www.vaughnsgardening.com.au)

## G.M. Ellison & Co. lawyers • conveyancers

Graham Ellison LL.B.

- Real Estate & Business Conveyancing
- Wills, Probate and Personal Arrangements

5 HOST PLACE BERRY  
Ph: 0408 444 808

[graham@gmellisonlawyers.com.au](mailto:graham@gmellisonlawyers.com.au)

## TERMITES!

- ▼ Pre purchase termite inspections and reports
- ▼ Termite barriers new & existing buildings, council approved
- ▼ Thermal imaging and microwave inspection tools
- ▼ Termite Baiting Systems

FREE QUOTES Call  
**TERMITE SOLUTIONS-**  
**4448 5444**  
termite experts

Fully Licensed, Accredited & Insured  
Family Business with over 20 years experience

## PROPERTY MAINTENANCE HOME HANDYMAN

- Repairs and installation of doors/windows/gates and fencing
- Small extensions - decks/pergolas
- Tipper Hire
- Clean ups - rubbish removal
- 40 years' experience
- Fully licensed

Michael Barrett 0408 217 637

## BERRY MAINTENANCE PLUMBING

ALL PLUMBING SERVICES  
Gutters Hot Water Toilet Repairs Leaks

Paul Bramley Licence L5826

Mobile: **0438 641 046**

Office: 02 4464 1312

## &AR Contracting



Your One-Stop-Shop  
For Professional & Prompt  
Commercial, Civil,  
Residential & Rural Services

02 4464 1125 ☎ 0422 282 766



## SPACE AVAILABLE

CONTACT THE EDITOR  
**0428 037 572**

[towncrier@berryalliance.org.au](mailto:towncrier@berryalliance.org.au)

HERE IS HOW TO GET THE BEST KITCHEN,  
VANITY, FURNITURE, TIMBER WINDOWS,  
DOORS, FLYSCREENS AND JOINERY

## Rybrook Joinery

CALL SCOTT OR MICHAEL

**4422 4600**

## MARK FOX TILING

- Floor Screeds • Waterproofing
- All interior and exterior wall and floor tiling
- Pool water lines and complete pools
- With over 25 years' experience in the construction industry
- I have the solution to all your tiling needs.

Call **0481 297 087**  
FOR YOUR FREE QUOTE TODAY  
Licence No 304070C



Mary Pentecost

84 Queen Street Berry NSW 2535  
email: [wbpqueen84@hotmail.com](mailto:wbpqueen84@hotmail.com)

☎ **4464 2874**



- ★ Domestic and Commercial Cleaning
- ★ Regular and Spring Cleaning
- ★ Presentation Cleaning
- ★ Rental Exit Cleaning
- ★ Window Cleaning

Call Rhona for a free quote: **0417 652 892**

Over 20 years' Experience ...

## ELECTRICAL CONTRACTOR



- DOMESTIC & COMMERCIAL
- Solar Power Installation
  - Home Automation Systems
  - Security Lighting
  - Pools & Spas
  - Hot Water Systems
  - Oven & Stove Repairs
  - Safety Switches
  - Smoke Detectors

Contact peter today!  
**0412 594 907 | 4464 1993**

ENDEAVOUR ENERGY AUTHORISED LEVEL 2 SERVICE PROVIDER



**Automotive Residential**  
**Commercial Industrial**

MOBILE 24/7 LOCKSMITH SERVICE  
**0498 770 088**

[www.jetlocksmiths.com.au](http://www.jetlocksmiths.com.au)

Master Locksmith | Security Lic #000101098

## Gerrong Painting Service

Lic: 186465C

- New & Repaints
- Interior & Exterior
- 30 Years Trades Experience



**GREG DENT 0438 637 141**



**MISS SPARKLES  
SHOALHAVEN**  
External House Cleaning

**HOUSES FROM \$148**

- ★ Environmentally Friendly
- ★ House/Driveway Packages
- ★ Removal of Cobwebs
- ★ Patios and Driveways
- ★ Mildew Treatment
- ★ Windows/Screens included
- ★ Commercial work
- ★ Seniors Discount

Phone Dennis for a free quote:  
**0407 642 256**

Now Offering: Internal Window Cleaning &  
Licensed/Insured Electrical Work (Lic No. 209514C)

# TRADES & SERVICES DIRECTORY



All Earthworks  
Landscaping  
Driveways  
Rural Roads



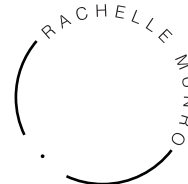
**Charlie** 0418 429 740  
**charlie@ckbcivil.com.au** Lic 244729c



**MOUNTAIN ECHO**  
landscape & horticulture

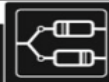
environmental contracting, garden management,  
landscape design & construction, permaculture design

Ryan 0409 743 828 & Katie 0424 236 235  
[www.mountainecho.com.au](http://www.mountainecho.com.au)



YOUR *mindful* TRAINER  
· personal training · yoga  
· meditation · health coaching

**0406 727 680**  
[rachellemunro.com](mailto:rachellemunro.com)



**Computer  
Troubleshooters**

TECHNOLOGY SOLVED

- Residential or Business we come to you.
- Hardware and software repairs and sales.
- Networking solutions.
- Over 20 years' experience.

**0422 227 456**  
[www.ctsnowra.com.au](http://www.ctsnowra.com.au)

LOCAL SERVICE – GLOBAL STRENGTH

## Support Locally Owned Businesses



Local Plumber  
Fast & Reliable 24/7

**1300 792 082**

[www.curranplumbing.com.au](http://www.curranplumbing.com.au)

10%  
OFF  
IF YOU  
MENTION  
THIS AD



- Full log book servicing & general servicing
- All mechanical work to light vehicles
- All farm machinery
- All earth moving equipment
- Trucks and heavy vehicles

**02 4464 1125**

**88 QUEEN STREET BERRY NSW**



Licence MVTC 158857  
ABN 80 621 680 859



## Chimney Sweep Wood Fire Installation and Maintenance

Servicing Berry for over 26 years Locally Run  
Family Business - Specialising in all your  
Wood Fire Needs - Licenced, Insured,  
Professional & Clean.

Contact Russell:  
0412 241 557 / 4464 1557  
Or Luke: 0413 737 316  
Lic No L7020

**Arborist**  
Complete Tree Removal & Care  
Reliable Professional Service  
Mulch Sales  
Stump Grinding  
Fully Insured

**Dave Kelly**  
0423 903 946

All aspects of professional tree care.



**OPEN 24/7** | AFTER HOURS  
CALL OUTS WELCOME  
CALL BILL OR DEBBIE:  
(02) 4465 1841 / 0424 867 994  
✉ [surfelectrical@outlook.com](mailto:surfelectrical@outlook.com)  
f Like us on Facebook!

### AREAS OF SERVICE:

KANGAROO VALLEY / CAMBEWARRA /  
BERRY / SOUTHERN HIGHLANDS

- Fully Insured • 20+ years experience
- Residential • Commercial • Industrial
- New Homes • Renovations & Extensions
- Maintenance • Repairs • Upgrades • Installations

<https://surf-electrical-pty-ltd.business.site> ABN 70 845 107 241 LIC NO. 253095C

## SOUTH CENTRAL PLUMBING

PLUMBING | GASFITTING | ROOFING

ABN: 54 613 052 547 | Licence # 319673C

Commercial and Residential Plumbing  
Maintenance Plumbing, Drainage, Roofing,  
Gas-Fitting and Backflow Prevention

Professional and Reliable service

Call Luke ☎ 0431 290 296

[www.southcentralplumbing.com.au](http://www.southcentralplumbing.com.au)



For all your concreting & Landscaping projects  
Call or text Ben on 0438 703 109



**CHRIS MANN 0431 671 475**  
[mmbuildingandconstruction@gmail.com](mailto:mmbuildingandconstruction@gmail.com)

NEW HOMES | RENOVATIONS | EXTENSIONS | DECKS-PERGOLAS | CONCRETING

ABN 40 624 149 506 LIC. NO. 292587C



## Southern Tree Service

- Qualified Arborist
- Qualified Horticulturist
- Tree care and maintenance
- Expert trimming and tree removal in confined areas
- Chipper • Mulch
- Advice on replacments
- Stump Grinding
- Fully Insured

**Paul Gillen**

Ph/Fax 4464 2822 • Mobile 0407 405 968

## South Coast Gutter Wiz

GUTTERS BLOCKED?

Our safe, affordable & mess-free vacuum gutter cleaning service is now available in your area! Keep your home free from debris & bushfire safe. Pressure Cleaning service also available.

Call for a free quote today....

**Your vacuum gutter cleaning expert**  
Phone Garry 0401 492 220







140 Queen St  
Berry Ph:4464 2995  
[www.berrybowling.com.au](http://www.berrybowling.com.au)  
f Berry Bowling Club

**BOOK YOUR OWN**

**BAREFOOT BOWLS PARTY**

**BOOK YOUR WORK**

**BAREFOOT BOWLS PARTY**

- Cost \$10 per person which includes bowls hire coaching and set up
- Both BBQ's can be hired for self-catering



itsmyclub  
BERRY BOWLING CLUB

## *Berry Bowling Club Ham Raffles 2019*

Nov 29 - 20 hams  
Dec 6 - 20 hams

Dec 13 - 40 hams  
Dec 20 - 20 hams

TICKETS ON SALE 6PM • DRAWN 7:30PM



Berry Bowling Club

# CHINESE

RESTAURANT

Lunch & Dinner - Wednesday to Sunday Ph 4464 2388



## BERRY BOWLING CLUB MARKETS

GUARANTEED TO PUT A SMILE ON YOUR DIAL!  
EXCITING AND UNIQUE PRODUCTS ARE SELLING AND  
WE PROMISE YOU WILL NOT BE DISAPPOINTED!

2nd Sunday Every Month 8am - 2pm



*Consider Berry Bowling Club  
for your next Special Event*