



# BERRY TOWN CRIER

PO BOX 202 BERRY NSW 2535

WWW.BERRYALLIANCE.ORG.AU

 FIND US ON FACEBOOK

APRIL 2019 PRICE: \$3.00

Page 3

**SUSTAINABLE  
BERRY –  
ENCOURAGING  
INSECTS IN  
YOUR GARDEN**

Page 13

**CHECK  
OUT BERRY  
PRESCHOOL'S  
NEW WEBSITE**

Page 8

**GET INVOLVED  
IN A COMBINED  
COMMUNITY GROUPS  
FUNDRAISING DAY**

Page 7

**UPDATE  
FROM THE  
BERRY FORUM**

See page 9 to find  
out more.

**THE REDBERRY  
2019 QUILTING  
FESTIVAL IS  
HAPPENING IN  
EARLY MAY**

Page 27

**THE RED CROSS  
IN BERRY  
ARE LOOKING  
FOR NEW  
VOLUNTEERS.  
COULD THAT  
BE YOU?**

With so many local community groups to suit everyone,  
make 2019 the year to get involved in our thriving little community.

See Pages 18 and 19  
for all the information.



# BERRY ALLIANCE INFORMATION



The Town Crier is produced  
by the Berry Alliance, Inc.

The purpose of this publication is  
to communicate to the people of  
Berry about community activities  
and to generate a small income  
for the Berry Alliance to cover  
administrative costs and donations.

## MEMBERSHIP

Membership of the Berry Alliance  
costs \$10 pa. It aims to share  
information amongst community  
groups and individuals, and to  
ensure that Berry continues to be  
a community we are proud of.

Membership is open to  
Berry community groups  
and individuals. To join the  
Berry Alliance, write to  
PO Box 202 Berry NSW 2535

## ALL BERRY ALLIANCE ENQUIRIES

Secretary: 0449 569 059

Email: [towncrier@berryalliance.org.au](mailto:towncrier@berryalliance.org.au)  
Post Office Box 202  
Berry NSW 2535

## Editor's Note



The closing date for our May issue will be  
Wednesday 17th APRIL 2019 at 5pm.  
Please submit prior to this date if it is your  
first submission. Material can be submitted  
via e-mail to:

[towncrier@berryalliance.org.au](mailto:towncrier@berryalliance.org.au)  
Phone 0428 037 572

Town Criers can be downloaded for free from  
[www.berryalliance.org.au](http://www.berryalliance.org.au) or our Facebook  
Page: Berry Town Crier.

Nancy Davies - Berry Town Crier

### TOWN CRIER EDITORIAL BOARD

Nancy Davies Rick Gainford  
Holly Landgren Adrian Bishop

Contributors are those from the Berry community who  
have news or views relating to residents of the area. The  
opinions expressed in the Town Crier are not necessarily  
those of the Berry Alliance or the Editor. The Town Crier  
is published every month, with a circulation of 2400.

PRINTED BY **Berry Printers**

CONCORDE WAY BOMADERRY PH: 4422 3774

PRINTED ON RECYCLED PAPER



## Setting up a Worm Farm for composting food scraps

The highlight of the month  
at Plant Prop was 'setting  
up' a worm farm to make  
compost.....

The children learned the difference between  
earthworms and compost worms and the  
benefits of making and using home-made  
compost.

The worms were introduced to a comfortable  
bed of wet coir and newspaper in a round  
worm farm before being fed with finely  
chopped food scraps. The worms were then  
covered with a blanket of hessian.

After a short settling in period, the worms are  
getting on with the job of making compost,  
a great product to enhance the health of  
garden soil.



Above: Preparing lunch  
for the compost worms.

Right: Scattering the food scraps  
for the worms to transform into  
compost



In a bush setting or under trees, naturally  
occurring leaf litter and debris is composted  
over time by earthworms, fungi and micro  
organisms.

In this situation, adding garden prunings and  
grass clippings directly is not beneficial as it  
provides too many nutrients at once. Grass  
clippings especially are rich in nitrogen and  
become compacted, forming a mat which re-  
stricts air flow and water penetration to the soil.  
Other methods of composting are more  
desirable for dealing with garden prunings  
and grass clippings.

## AUTUMN PLANT SALE DAYS

Wednesday 3rd April 12.30-5.00pm

Thursday 4th April 3.00pm-5.00pm

Friday 5th April 12.30-5.00pm

Sunday 7th April 9.00am-1.00pm

# BERRY DENTIST



**Dr Paul del Solar BDS (Syd)**

AVAILABLE FOR ALL ASPECTS OF GENERAL  
AND FAMILY DENTISTRY

**NEW PATIENTS WELCOME**

HAPPY GAS IS AVAILABLE FOR ANXIOUS PATIENTS OF ALL AGES

P: 4464 1055 to make an Appointment  
58 Queen Street Berry NSW 2535

# ENCOURAGING INSECTS IN YOUR GARDEN

BY HOLLY LANDGREN

Insect populations around the globe are in decline. Recent scientific reports indicate that the Bogong Moth, Monarch Butterfly and Tiger Moth populations have plummeted, likely due to increased global temperatures, pesticide use, and loss of habitat. The Varroa destructor (mite) is destroying honeybee colonies globally. The detection of these parasites both Townsville and the Port of Melbourne in recent years means it may be a matter time before we are unable to halt an outbreak of this destructive disease, leading to a collapse of honeybee colonies in Australia.

It is not only pretty or useful insects that appear to be in decline; the biomass of bugs and beetles appears in decline in collection sites around the world. Although the picture is not yet clear what the impact of declining insect numbers means, there are a number of practical steps you can take to encourage insects in your garden.

Some insects are considered beneficial, like lacewings, parasitic wasps, hover flies, and ladybugs, as they or lay their eggs in, or eat, problem insects. Plants that attract beneficial insects include angelica, dill, mint, oregano,

parsley, dill and the onion family. Spraying insecticide, or using an insect zapper kills insects indiscriminately. A search online for biological insect control products will give you safer alternatives. Bug zappers are useless against mosquitoes, which are not attracted to the ultra-violet light; a citronella candle or mosquito coil is a safer choice.

It is worth accepting that there will be damage to plants from caterpillars, because every caterpillar killed is one less moth or butterfly, some of which may be important pollinators in the garden. On citrus trees, by killing the caterpillar you miss out on the beautiful Swallowtail butterfly.

Australia has around 1,500 species of native bees. Australia has around ten "social" species but most species are known as solitary bees, because unlike European honeybees they do not live in a colony with a queen bee, drones, and worker bees. Instead, one female bee mates, and builds an individual nest for her eggs. You can construct a "bee hotel" with a bundle of twigs, hollow bamboo tubes or timber with holes drilled into the surface. Put your bee hotel in a sheltered spot, with the front facing

north to get winter sun and keep bees warm. Native bees are attracted to Abelia, Angophora, Buddleia, Callistemon, Grevillea, Leptospermum and Westringia plants. Other pollinator attracting plants include alyssum, borage, cosmos, calendula, daisies, lavender, rosemary, salvias, and yarrow. In particular, bees are attracted blue, purple and yellow flowers.

Insects need protection from heat and rain, and from birds. Planting diverse leafy plants offer protection, as does mulching soil or planting ground covers. Leaving some of your perennials or grasses uncut will also offer insects a home over winter.



## SUSTAINABILITY WORKSHOPS

Shoalhaven Council is offering **FREE WORKSHOPS** again this autumn. Have a look at their website to find the workshop that suits you. Numbers are limited, so you need to get in quick. Remember if you miss out you can leave your email address to be contacted for the next round.



# ANZAC DAY

PARADE ASSEMBLES IN QUEEN STREET BERRY CBD BY 10.15 AM, PARADE FORMS AT 10.20 AM AND MARCHES TO THE CENOTAPH WHERE THE COMMEMORATION SERVICE WILL BE CONDUCTED.

## The Living Room "BERRY" (Warehouse Outlet)

Direct Importers of

ASIAN INSPIRED - HOME & GARDEN WARES

"Now Located" @Cnr Gesham Way & Meroo Rd BOMADERRY  
(Only 10 minutes South of Berry)

### HANDMADE PRODUCTS INCLUDE:

- Outdoor furniture
- Table and floor lamps
- Hand carved mirrors
- Garden statues
- Basketware
- Shell products
- Placemats
- Nautical Products
- Stoneware
- Ceramics
- Bamboo Ladders
- Rattan Products
- Giftware & more

lower overheads  
equals lower  
prices

**OPEN TO THE PUBLIC from 10am Thurs - Fri - Sat**  
or phone Tony for an appointment

WAREHOUSE OUTLET OWNED AND OPERATED BY ORIGINAL OWNERS OF THE LIVING ROOM, ESTABLISHED IN 2002.



☎ 0418424150

✉ thelivingroomberry@gmail.com

fb thelivingroomberry

theivingroomberry.com



## Walkley Award-winning Editor of *The Guardian Australia*, Lenore Taylor with Berry Conversations' President Mary Cunnane

One of Australia's most outstanding journalists, **Lenore Taylor**, will appear with former publisher and literary agent, Mary Cunnane on Saturday April 6<sup>th</sup>.



Taylor began working as a journalist in 1987 at *The Canberra Times* and was later national affairs correspondent and then chief political correspondent at *The Sydney Morning Herald* before becoming *The Guardian's* first political editor in 2013 and its editor in 2016.

She has won the 'Scoop of the Year' Walkley Award twice:

- 2010, for her reporting on the Rudd government's shelving of an emissions trading scheme
- 2014, for a joint report on Australian spying on the Indonesian government.

Other awards include:

- the 2014 Paul Lyneham Award for excellence in journalism
- the Federal Parliamentary Press Gallery Journalist of the Year in 2007 and 2014.

Taylor, who is a frequent panelist on ABC TV's *Insiders*, published her first book, *Shitstorm: Inside Labor's Darkest Days*, about Kevin Rudd's first term as Prime Minister, in 2010.

**Mary Cunnane** is a former Vice-President and Senior Editor at W.W. Norton & Company in New York and founded The Mary Cunnane Agency in Australia in 1999. She has also been Vice-President of the Sydney PEN Centre and the Australian Literary Agents Association, and was the recipient of a NSW Premier's Literary Award in 2010.

### TICKETS AVAILABLE NOW

Date: Saturday April 6

Time: 3-5 pm

Place: Berry Public School Hall, Clarence Street

Tickets: \$30, refreshments included. Purchase at the Berry Music Centre, Queen Street or at [www.trybooking.com.au](http://www.trybooking.com.au)

Enquiries: [berryconversations@gmail.com](mailto:berryconversations@gmail.com) or 0409 468 480







**ZONTA** INTERNATIONAL  
EMPOWERING WOMEN  
THROUGH SERVICE & ADVOCACY

**ZONTA SAYS NO**



On Saturday 9th March, the Zonta Club of Berry were very proud to host a breakfast for International Women's Day at the Nowra Golf Club on the banks of the beautiful Shoalhaven River.

International Women's Day is celebrated around the world and showcases women's rights and achievements, and promotes change for gender equality. This year's theme was "Balance, For Better" a call to action to create a better gender-balanced world.

The breakfast was a huge success

enjoyed by all. We would like to thank our lovely sponsors Raine & Horne Berry, Armitage Alarms, Aussie Home Loans & Bayside Mortgages, Carter & Ferguson Solicitors, Berry Automotive Repairs, Nowra Chemicals, Tod Adams, Berry Beauty Culture, Knickerboxers, Queen Street Eatery, Mary Milgate and Wendy Woodward of Nutrimetics.

This year's speakers were such inspiring, engaging women who certainly got the conversations going. Isha Knill is a passionate supporter of women, with a message that you can create a career and have a happy home life by reshaping how we raise our families so women can have the peace of mind that comes with both a fulfilling career and living in a connected family where everyone thrives.

Ebony Bennett is the Deputy Director of Canberra based think tank The Australia Institute. Ebony has worked in Federal politics, and is a published researcher on gender, street harassment, climate change, energy and inequality. You may have seen Ebony commenting on Sky News or read her articles in The Guardian or Fairfax publications. As intense as some of Ebony's subjects are Ebony delivered a riveting, thought producing talk that had us all thinking outside the square.

The event was a great opportunity to network, have some beautiful food and raise funds for women in need.

The Zonta Club of Berry meets once a month for a dinner meeting at the Hotel Berry Coachhouse Restaurant and welcomes anyone who has a passion for advancing the status of women and empowering them through service and advocacy, to join us.



#### ▶ OUR NEXT MEETING IS

**Tuesday April 23rd at 6.30pm for 7pm.**

Please call Rosemary Courtney on 0430 359 443 to book.



AND LIKE US ON FACEBOOK!



Berry Uniting Church

## Berry Combined Community Groups Fundraiser

Berry Uniting Church is planning to host the second annual fund-raising day for the charities, clubs and groups of Berry, on Saturday, 11th May. Despite the absolutely terrible weather last year, a great time was had by all who contributed to or visited the "Combined Community Groups Fundraising Day." We are hoping for dramatically better weather for this year's event!

The day will start at 8am and run till 1pm. For organisations that don't want to sell goods, there will be an opportunity to have a stall on which to advertise their group or club to the wider community. Stalls will be available for \$20.00 each. It is hoped that this will be another great community time, with like-minded people coming together for the common good of the town.

**TO BOOK, EMAIL JOHN BRENTNALL  
AT PRADORIDER@ME.COM OR  
PHONE 0466 717 254**



Want to raise some funds for your group or club?  
Want to promote your group or club to the community?  
Want to be part of a great community event?

***Book a stand/stall/table at the***

## "Combined Community Groups Fund Raising Day"

in the hall and grounds of

**Berry Uniting Church 77 Albert Street Berry  
8.00am to 1.00pm - 11th May 2019**



Berry Uniting Church

**TO BOOK EMAIL PRADORIDER@ME.COM OR CALL 0466 717 254**

# Commitment for the Berry Nature Play Parkland - a Real Boost -

Five years ago, the Rotary Club of Berry presented to the Berry community a vision to develop an all ages, fully accessible nature play-ground in the Berry District Park (now named Boongaree) North St Berry, once the Berry Bypass had been completed.

Following extensive community consultation and stakeholder workshops, this vision was identified as being of "Very High Priority" within the Berry Community Strategic Plan, and was subsequently endorsed by Shoalhaven City Council.

The Rotary Club of Berry has been working hard to raise funds for this project ever since.

On March 13, Member for Kiama, Gareth Ward MP announced that a re-elected NSW Liberals and Nationals Government will commit \$4 million towards Rotary's Nature Play Parkland.

On behalf of the Berry Community the Rotary Club of Berry is extremely grateful for the support shown for our vision and is committed to ensure it comes to fruition.

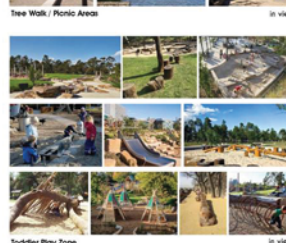
If you would like to get involved in the development of the Nature Play Parkland, you would be welcomed at any of our regular dinner meetings that are held on Thursday evenings at the Berry Bowling Club.

Just give our Membership Director Phil Monaghan a call on 0428 946 268.

### BERRY NATURE PLAY PARKLAND

#### Not just a playground:

- An adventure.
- A picnic area.
- A welcome rest area for families travelling through.
- A place that uses local natural resources.
- Where the elements and features respond to the local setting and the story of Berry.
- A showcase of the skills of local people.
- A destination for Nature Play at a unique playground that is unlike any other.



A Community Project promoted by the

**Rotary**  
Club of Berry





# The Berry Forum

[www.berryforum.org.au](http://www.berryforum.org.au)

## Community Members Object to 'Temporary' Function Centres

Around 70 objections to the DAs for properties in Strongs Rd and Tindals Lane have now been submitted, and the Committee has requested that consent be decided by the full Council. Community members have expressed concerns that the 'temporary' function centres, able to operate until the early hours every weekend of the year, will set a precedent that will destroy the nature of the rural lifestyle across the Shoalhaven and diminish the amenity and attractiveness of the area both as a tourist region and for permanent residents.

## Tourist Accommodation Planning Legislation Loopholes

Between 2015 and 2017 the Berry community had to endure two very lengthy and painful campaigns objecting to applications for tourist accommodation developments. In each case, Council was taken to the Land & Environment Court by the applicants and it became clear that there were loopholes in the planning legislation.

At the Forum meeting in August 2016, attended by Cllrs Amanda Findley, Andrew Guile and John Wells, we reported that Committee representatives had met with Planning Minister Rob Stokes and Gareth Ward to discuss concerns about uncontrolled development of tourist accommodation in rural and environmental zones. The Minister

had recognized the potential statewide implications, and instructed the Department of Planning to investigate how the loopholes could be closed.

In October 2017, we reported that a meeting had been held with new Planning Minister Anthony Roberts and Gareth Ward to again lobby for the planning loopholes to be closed. Further meetings took place during 2018 to discuss the solutions we had developed and in October the Minister instructed the Department to address the loopholes. However, in November Department officials advised that they would first conduct a survey of all councils across NSW to assess whether the impact of the loopholes was statewide or local, effectively putting any action on hold until after the election.

In December 2016, Council had also resolved to review its tourist accommodation planning provisions, but at the recent Development Committee meeting on Tuesday 5 March staff recommended that its review should be deferred pending the outcome of the Department's review. We had provided the meeting with a summary of the key issues and proposed solutions that would close the loopholes in the Shoalhaven LEP (see Forum website).

At the meeting, our proposals were strongly supported by Cllr Andrew Guile and other councillors. However, one councillor was concerned about staff undertaking the 'Department's work' and another expressed

concerns about restrictions on tourist development. Cllr Guile responded, refuting both concerns in detail. A compromise recommendation was agreed, including consideration of the Forum Committee's proposals. This important subject will be discussed at the next Forum meeting.

## Adventure Playground

Gareth Ward has announced that a re-elected NSW coalition government would commit \$4m towards an adventure playground in Boongaree District Park in North St. The playground, which would provide a range of activities for all ages and levels of ability, has been pioneered by Berry Rotary.

## Edward St to be Re-opened

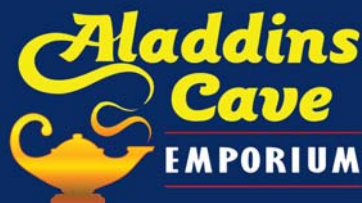
Council has advised that the existing timber road and pedestrian bridges are to be replaced with box culvert units, and the road will then be re-opened to traffic.

## Public Amenities Block at Apex Park

Last year, the community recommended that the existing facilities in Apex Park be replaced. Council has now prepared design options and, given budget and response time constraints, the Committee has opted for a more compact configuration on a site little bigger than the existing building's footprint. More information will be available at the April Forum meeting.

**NEXT FORUM MEETING IS ON 11 APRIL 7.30PM AT THE SCHOOL OF ARTS**

After 18 years in Berry, Aladdins Cave / Bus Stop Furniture **HAS RELOCATED TO 4 BROWN ROAD SOUTH NOWRA**



## HUGE RANGE, OF UNIQUE AND ECLECTIC ANTIQUE, VINTAGE, AND QUALITY PERIOD STYLE FURNITURE AT BARGAIN PRICES

The same eclectic mix of wonderful furniture pieces that we have always been renowned for. Great prices, great quality items.

**Pay Us a Visit. Aladdins Cave Emporium have moved in South Nowra. Now located at 4 Brown Road, South Nowra, opp. McDonalds Car Park Open 7 Days 9.30am-5pm**

**DON'T PAY NEW PRICES, UNTIL YOU'VE VISITED US FIRST: DOUBLE THE QUALITY; HALF THE PRICE.**

**Aladdins Cave EMPORIUM**

**0403 272 543 E: [aladdinscaveemporium@gmail.com](mailto:aladdinscaveemporium@gmail.com)**

*"You Never Know What You'll Find"*



## NEW BERRY KARATE CLASSES

Weekly classes in self-defence and fitness (Shotokan Karate) will commence on Thursday 2nd May from 5:30-6:30pm at Main Hall, Berry Uniting Church, 77 Albert Street Berry. Suitable for kids, teens, adults and families.



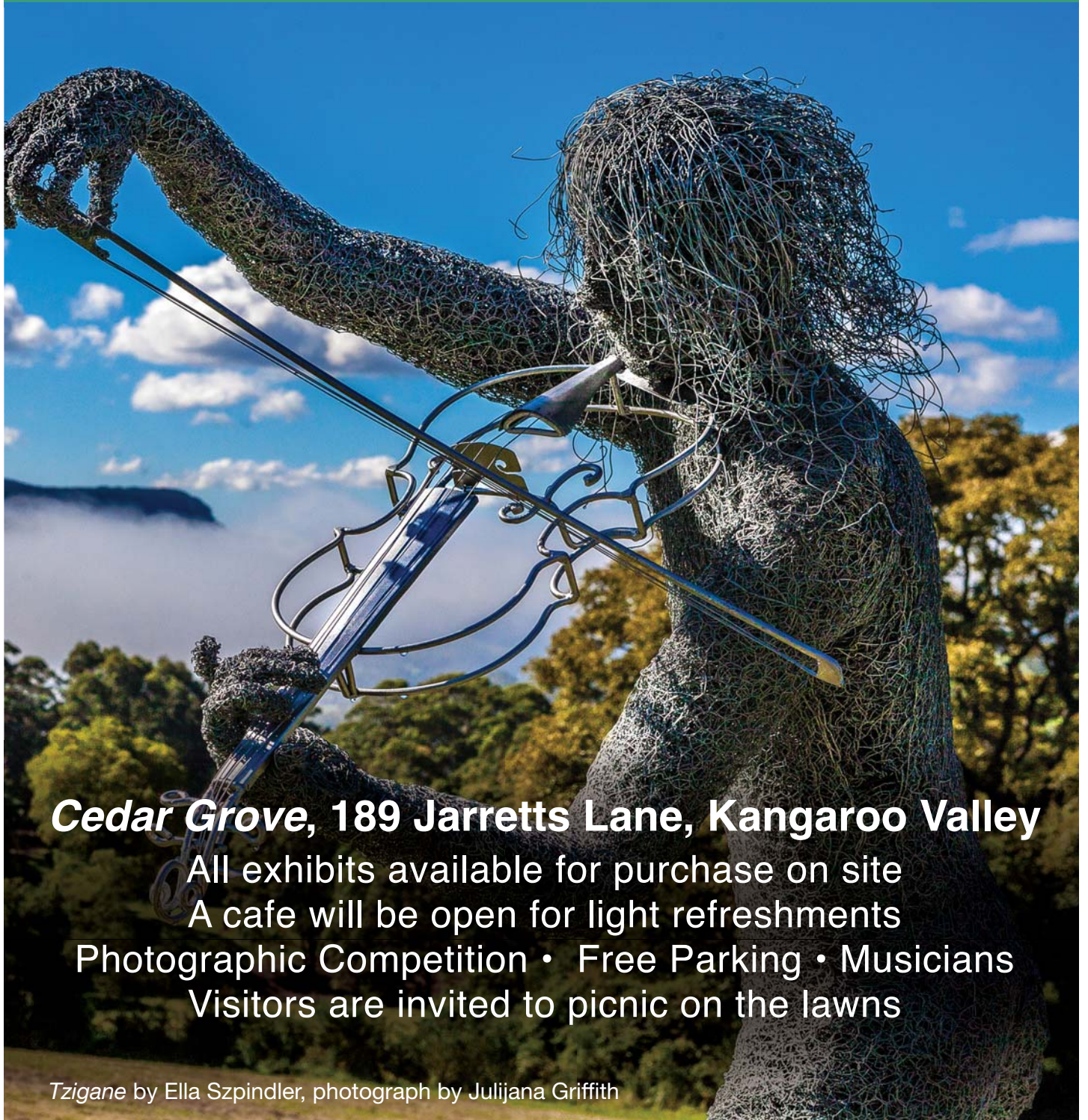
Highly experienced and qualified instruction.

**Contact**  
**David Rush on**  
**0418 977 402**  
or email  
**[sckarate01@gmail.com](mailto:sckarate01@gmail.com)**  
for details.



# Sculpture in the Valley

Friday May 3<sup>rd</sup> - Sunday 5<sup>th</sup> 2019 10am - 4pm



**Cedar Grove, 189 Jarretts Lane, Kangaroo Valley**

All exhibits available for purchase on site

A cafe will be open for light refreshments

Photographic Competition • Free Parking • Musicians

Visitors are invited to picnic on the lawns

*Tzigane* by Ella Szpindler, photograph by Julijana Griffith

[artsinthevalley.net.au/sculpture2019](http://artsinthevalley.net.au/sculpture2019)







# BERRY QUILT SHOW 2019



If you are among the many who enjoy seeing and admiring the handiwork of others, then you and your family and friends might be interested to visit Berry when RedBerry Quilters will be presenting the Berry Quilt Show for 2019.

The show will be held on the first weekend in May - from Friday 3rd to Sunday 5th May, at the Berry School of Arts in Alexandra Street, Berry, from 9.30am to 4.00pm each day.

RedBerry Quilters are supporting SAHSSI (Supported Accommodation & Homelessness Services Shoalhaven Illawarra) by providing quilts for those in SAHSSI's care, and all profits from the Berry Quilt Show will be donated to that worthy organisation. SAHSSI works to support women, with or without children, who are affected by homelessness or domestic and family violence.

Would you like to enter one (or more) quilts you have made into a quilt show? You might have felt a little nervous about the idea and that your work is not 'good enough'. This May might see you change that thought into a reality as RedBerry Quilters are calling for quilt entries. All quilt makers are welcome.

Each of the three days of the Quilt Show, viewers will have the opportunity to vote for one of the quilt works on display. Each of the winners will receive a prize, which have kindly been donated by our generous sponsors.

In addition, there is to be a Small Quilt Challenge with the theme 'Berry Delights'. Entrants may use any techniques or materials to create a small work (A4 size) that expresses what they see, or feel are the delights of Berry. There will also be a prize for the winning entry. After your trip to Berry, you might like to take a relaxing break in the café at the Quilt Show over a tea or coffee and sweet snack or sandwich. Again, all proceeds from sales at our café will be donated to SAHSSI. For those who would like to add to their stitching stash, or start a

new hobby, there will be commercial stallholders, and works made by the RedBerry Quilters for sale. There will also be some display quilts available for purchase. At the end of the Quilt Show, we will draw the winning ticket of the quilt raffle, tickets for which will be available at the Quilt Show or by contacting RedBerry Quilters members or the Secretary at [redberrysec@gmail.com](mailto:redberrysec@gmail.com)

RedBerry Quilters are a group of quilters and stitchers of varying skills and abilities, from beginners to professionals, with interests and experience in all manner of styles, from traditional to modern and everything inbetween, machine work, hand work and combinations of both. One thing we all share is a love of stitchery and textile arts generally. The range of interests and skill levels among our group ensures that there is plenty of inspiration, encouragement and opportunities to learn, and to share and show the results of our work with one another.

Come along if you would like to join us for some stitching, a chat, see our work and perhaps share yours, and be inspired by the work of our visiting speakers. Join us at 9.30am – 12.30pm, St Luke's Anglican Church Hall, Princess Street, Berry twice monthly, on the 4th Friday for meetings, and on the 2nd Friday for sewing days.

*The 2019 Berry Quilt Show Raffle Quilt, stitched by Carolyn Collins and professionally quilted by Carol Tabone.*



You can find us on Facebook at <https://www.facebook.com/redberriesquilting/> or at [redberryquilters.org](http://redberryquilters.org)

## Clairvoyant in Berry

Judy was born into a family of Clairvoyants and Palm Readers and for generations her family has been conducting readings that offer the opportunity to look into your past, present and future life.

Judy brings all of her skills as a psychic medium, clairvoyant and palm reader, as well as her background in Behavioural Psychology to your reading in order to offer you a comprehensive view into what is currently occurring in your life and where your current choices may lead into the future.

**IF YOU ARE LOOKING FOR GUIDANCE, CONFIRMATION OR SIMPLY A GREATER UNDERSTANDING ABOUT YOUR LIFE, A READING WITH JUDY WILL PROVIDE YOU WITH THIS.**

**PSYCHIC / CLAIRVOYANT PALMISTRY**

**JUDY - MOB: 0422 234 211**





# Sacrifice and Salvation

On April 19 and 21, millions of Australians will attend churches to remember and celebrate Easter. A few days later, similar numbers will attend dawn services and Anzac Day Marches to remember those who have fought and suffered for our freedom. Why is it that these days are so significant in the national Calendar? I believe that they are linked by far more than the week that they fall in this year. I believe that there is a powerful theme that runs through both commemorative events. Both Easter and Anzac Day speak of the heroic and selfless sacrifice of one – or a few – for the freedom and salvation of many.

The difference between them is the means by which the sacrifice is made. Whereas the Anzacs sacrificed themselves in battle, Jesus sacrificed Himself by surrendering Himself to a brutal and shameful death on a Roman cross. He did this not for His own benefit, or even out of some sense of duty. He did this because He loves us and He was desperate to make a way for us to be made right with Him. The story of Easter is of God giving everything, including His own life, so that all of humanity might once again be restored to relationship with Him. It's not because we were worthy of His sacrifice, or had somehow earned His favour, but because of His infinite love and mercy for us.

**The Apostle Paul writes in his letter to the Romans 5:8**

**“But God demonstrates his own love for us in this:  
While we were still sinners, Christ died for us.”**

In and through His death He paid the price of our rebellion and He made a way for us to reconnect with our creator. If you'd like to find out more about what it could look like for you to take hold of this free gift of salvation, please get in contact or head along to one of the great Churches in Berry. Our services are 9am and 10am on both Good Friday and Easter Sunday.

**Joel Noonan - Berry Community Church - 0403 193 945**



**Lighting up lives and communities with Jesus**

**We meet at Graham Park  
8 Schofields Lane Berry  
Sunday Services 9am, 10am & 5pm**

Activities include mainly music, Boys & Girls groups,  
Berry Youth & Connect groups.

**We'd love to see you here.**

info@berrycommunitychurch.org 4464 2315  
**www.berrycommunitychurch.org**



## BERRY RSL SUB-BRANCH AGM 2019

This year's AGM was conducted on Tuesday 5th February commencing with the Oath of Allegiance.

Ray Strong delivered his annual report, the highlight of the sub-branch being two major projects with the renovation of the BBQ shed, and the nearly completed replacement of the original kitchen dating back to the mid-50s. The kitchen upgrade was achieved in part through a DVA grant and Sub Branch funds, and will be gratefully received by the Ladies Auxiliary, who have "soldiered on" producing remarkable results from an antiquated facility. ANZAC Day and Remembrance Day were again well attended as befitting such occasions, and with great assistance from the community including MCs Col Cook and Clr John Wells, the Berry Silver Band, piper John Morrison and the children of the Berry Public School especially their rendition of Lest We Forget and the New Zealand National Anthem. A Sydney motorcycle enthusiasts group who attended the Remembrance Day Service, accorded the Sub Branch that this service was as good as any they had attended anywhere ever.

Welfare of members and family is one of our core values, and President Ray emphasised this point, that the sub-branch will continue to keep watch over those whose health is not the best. Given the age of our members, we have fared not too badly and as reports at the monthly meetings, members make light of those ailments which occur due to age.

If you are a current serving member of the Australian Defence Force or veteran residing in the Berry district, please make contact, we want to let you know we are grateful for your service and keep you in our thoughts and help in any way we can. Our meetings are conducted 1st Tuesday in the month commencing at 9.30 am.

Again our special thank you to our ladies of the Women's Auxiliary for their sterling work and support throughout the year; be it collecting for appeals or providing for functions, and other activities.

Due to issues originating out of the RSL State Branch, the Sub Branch has been restricted in its fundraising, but has continued to be well supported by the Berry community, who are aware that these issues are not emanating from the local area, and hopefully later this year, we shall be able to resume normal fundraising activities and functions in support of local veterans.

Funds raised from the ANZAC Badges were donated directly to assist in the running of the Invictus Games in Sydney late last year, which was attended by the patron HRH Prince Harry and wife Megan. To watch these veterans from many countries compete, not just from the Commonwealth was a great inspiration to anyone who witnessed the events.

Stuart Christmas, the secretary/treasurer advised there are currently 28 members and 9 affiliate members and the sub-branch is in a sound financial position.

**ANZAC Day Notes:** Local assistance will be gratefully accepted particularly for traffic control (which requires a short course) and volunteers to place vehicles at the various check-points along the parade route. If available, please contact secretary Stuart Christmas 0413 051 003 or via email BerrySB@rslnsw.org.au



# Landcare BERRY

## Pteropus poliocephalus:

When the bypass opened the town was confronted by the establishment of a camp of natives right on the edge of town. These immigrants were smelly, noisy and did considerable damage to the trees where they sheltered. Their fecundity increased their numbers in spite of many deaths from collisions with motor traffic. They are carriers of very nasty viruses and foul the land around them. It has been recommended that we keep well away from them and have nothing to do with them.

Then at the first violent wind storm before winter last year they decamped to who knows where. Now when their camp site has recovered, they are back! Some of the tree huggers in town have welcomed their arrival to our township and don't mind when their fruit crops are raided. I for one am one of these. You can see the encampment on the left-hand side going out of town to Kiama, opposite Mananga. Look up.

## Fox Cage Trapping:

Dean Bagnall will conduct a free Landholder's workshop at Wesley Hall, Berry Uniting Church, 77 Albert Street from 2 to 5pm Sat 23rd March. Register by email to: davidr@npansw.org.au.



**Plant identification service:** Please contact Harvey Blue 4464 1880 or Ian Parker, 4448 6359.

**Visit our pages at:** <http://www.landcare.nsw.gov.au/groups/berry-landcare> or Facebook for more details.

## WORKING BEES FOR APRIL 2019

Daylight saving ends 7th April

### Alexandra Street Parkcare:

8-10 am Friday 12th: Gail Paton 4448 7915.

### Bong Bong Road:

9-11am Sunday 14th: Julia Woinarski 4464 2084.

### Broughton Vale:

9-11am Sunday 7th: Kelvin Officer 0427 255 417.

### Bundewallah Bushcare:

2-4pm Sunday 28th: John Clark 4464 3911.

### Camp Quality:

9-11am Sunday 21st: Hugh Sheil, 0417 407 477.

### David Berry Hospital:

2-4pm Saturday 20th: Leslie Pigott 4464 3241.

### Mount Coolangatta:

Nola Barker  
Mob: 0409 446 418,  
nolajbarker@live.com.au.  
Time to be advised. Meet at end of Roxbrough Rd, Far Meadow.

### Mark Radium Park:

9-11am Friday 12th: Sue Selden, sueselden@optusnet.com.au..

### Princess St. Parkcare:

9-11am Tuesday 23rd, Terry Oades 4464 3651.

### Tindalls Lane:

2-4pm Sunday 14th: Jim Jefferis 4464 2988.



## COFFEE AND Friends

Mike Leggett will be our speaker on the 24th April at 10am. Mike has qualifications in fine arts and media arts and will talk about how he became one of the project administrators for the Atlas of Life-Budawang Coast.

This is a citizen science project exploring the natural world around us. The project encourages local people to join and to share knowledge, explore nature and learn more about our local area.

Everyone is welcome. The venue is Wesley Hall at the Uniting Church, 77 Albert Street.

## BERRY COMMUNITY LIBRARY

The Third Wednesday Book Group meets again on Wednesday 17th April from 4-5.30pm. It's a friendly group with a shared interest and love of books so if that sounds like you, come along and check it out.

## LIBRARY OPENING HOURS

Monday and Wednesday 1-4pm  
Tuesday Thursday and Friday 10-1pm  
77 Albert Street, opposite the IGA carpark, behind the Uniting Church.  
For more information contact Janet on 0425 220 258.



# CUBIKCIVIL PTY LTD

ACN: 629 618 355

## NOW HAVE AVAILABLE IN THE -

- Berry
- Foxground
- Kangaroo Valley
- Coolangatta areas

**27T Excavator, Zero swing, Blade, Tilt Hitch, GPS (3D - 2D)**

Specialising in rural farm roads, house cuts, horse arenas and all phases of farm work.

**CONTACT PLANT MANAGER BOB 0498 691 382**

# YOUR TAXIS ARE BACK

**SEVEN DAYS**

**4464 3181**

**BERRY SHOALHAVEN HEADS TAXIS**

**NEW OWNERS**

**NOW OPEN**

# Welcoming and Easter

It can be a daunting thing moving to a new town. Our family recently arrived in Berry with a sense of apprehension about all the new things that awaited - new house, new school, new shops, a new church to attend and new people to meet. When you're going somewhere new a lot depends on the kind of welcome you receive from other people. We have loved the open and friendly way we have been welcomed in Berry - it has been one of the easiest places I have ever lived to meet people. We have really appreciated that!

Churches should be places that are open and welcoming, but I acknowledge this is not always the experience people have had. They should be welcoming because that is what God is like. The message of Easter is exactly that - that God welcomes all people. However, there is a surprise to God's welcome - there was a cost to God to welcome us back. This too is the message of Easter, as we remember the death of God's Son for us.

I can appreciate that it is daunting going to a church for the first time or returning after a while. If I was apprehensive about coming for the first time, I know it will be much harder for others. But I am sure that just as Berry as a whole has been welcoming, its churches would extend a warm welcome to you too - especially at Easter.



**Easter Service Times: St Luke's Anglican Church Good Friday 9:30am Easter Sunday 8am and 9:30am**



*The photo is of Simon Chaplin's induction service at St Luke's being welcomed by the wardens*



## Berry Men's Bowling Club

The Club has entered two sides in the 2019 District Pennant Competition and matches played to date indicate that both sides could have a successful pennant season. Two rounds of the competition had been played as this went to print and the Grade 2 Side has had two victories at that stage the first being a decisive win over Huskisson Club and the second was a very close win by one bowl over the competitive side representing Lake Conjola. Our second side playing in Grade 6 suffered a defeat in their first match against Shoalhaven Ex Servicemen's Club but in round 2 they traveled to Mollmook and returned home with a 68-44 bowl victory. Play in the 2019 Club Major Pairs is following a series of competitive early matches heading towards the final but form has been so good it is not possible to guess which combinations will reach the final play off. Entries are currently being accepted for the 2019 Major Singles and the final of this championship is scheduled to be played in May.

During the District Pennant season social bowls will be played on a Wednesday but play of a Saturday will due to the commitments to Pennants depend on the number of players wishing to gain their exercise and have an enjoyable afternoon. Bookings should be directed to Bowls Organiser on 0475 768 249 by 12 noon. Repairs to the greens is getting closer to finalisation and is not affecting the availability of space to play bare foot bowls which can be arranged through staff at the Club.

## Families, Friends, Fun. Come join us at Berry Playgroup

Berry Playgroup is a locally run, non-for-profit community organisation for young kids to interact and play as well as develop valuable social skills. All families are welcome to join us every Friday during the school term.

Playgroup is the perfect environment for new families to the area to meet other parents and kids. It is a great social experience for kids and parents, with a welcoming group of mums, dads and grandparents!

We have a range of fun activities and programs, including both inside and outside play. From soft play for babies to cars, slides, trucks, train sets, balls, musical toys, a tunnel, seesaw, a sandpit, and so much more, all under a big shade tree! Cost is \$5 per entry, per family. This covers arts and craft (perfect for those rainy days) and the general running of the Playgroup. Like our Facebook page- The Berry Playgroup- for what is coming up next! First entry is free, so try before you buy. Come and join us every Friday from 9:30am to 11:30am at Berry Community Church, 8 Schofields Lane, Berry. We are located around the back of the building, so follow the sign down the path.



*Growing in faith, hope  
and love*

**Senior Minister** Rev. Simon Chaplin

### Worship Services

#### Sundays

- Traditional: 8.00 am.
- Contemporary: 9.30 am with Kids' Church. Great for families.

#### Thursdays

- Holy Communion: 11.00 am on 1st, 3rd and 5th Thursdays.
- Quiet Prayer: 11.00 am to 11.45 am 2nd and 4th Thursdays.

### Bible Study Groups

- Women, men, and mixed groups.

### Activities

- Knit with Love: 1.00 pm, Fridays.
- Card Making.
- Exercise Classes.
- Lunch on the Verandah: 3rd Sunday each month.

*Visit us*

### St Luke's Church

68a Princess Street Berry

Phone 4464 1058

Email [office@berry.anglican.asn.au](mailto:office@berry.anglican.asn.au)

[www.berryanglican.asn.au](http://www.berryanglican.asn.au)



# Berry Preschool's new website is live!



We were very excited to see the release of our new website this month. This was designed and created by Berry's Handmade Web & Design, and we are extremely grateful for their very generous donation. We'd love for everyone to have a look at our amazing new website at <https://www.berrypreschool.org.au/>.

The children have settled in really well and have quickly formed some lovely friendships with each other. We have had a busy first term with the children enjoying our specialist educational science, art, movement and music programs.

As part of our science program, Shoalhaven Zoo visits the preschool monthly on Mondays and Thursdays. This program provides an opportunity for the children to have a valuable interactive hands-on experience. Our topic for the Zoo's first visit covered the different animal groups. We met a VERY cute baby wombat Bunker, Charlie the crocodile, Fluffy D the rooster and Squeeze the 2-metre Burmese Python and learnt some interesting facts about reptiles, mammals and birds. The children were all very brave in interacting with these incredible animals!

Our Art Educator Chloe has been teaching our Friday children about art styles, techniques and famous artists. So far this year, we have explored primary and secondary colours through the creation of a fantastic colour wheel, and the children have captured the styles of Henri Matisse and Claude Monet very creatively.

Our Wednesday children love participating in their weekly Zumba sessions and have quickly learnt the dance moves. We are also looking forward to the commencement of weekly Yoga lessons starting soon.

*Pic: Our beautiful colour wheel created by the children*

# Berry Masonic Village Auxiliary

Berry Masonic Village Auxiliary has held the first meeting of the year on Wednesday the 20th February. There was lots of news and suggested plans for the committee to get their teeth in to.

We need to raise funds to support those in the Village to assist with the activities such as the arts and craft time, help with the shopping bus, the pet visit, manicures, and many other events that take place during the week.

We were also informed about the Village Refurbishment that is being planned by the RFBI they plan to refresh all existing area and bedrooms. This Investment reflects RFBI's commitment to ensuring a modern and comfortable home that meets current and future needs. A new cafe will be added along with a gym and wellness centre. A DA for the work is expected to be lodged in the coming months and work will commence as soon as it's approved. the expansion will have 10 new residential rooms. This is exciting news regarding the Village.

The committee has planned two fundraising events for the next few months the first is a street stall; the date to be confirmed near the end of the month so please keep your eyes and wallets open when you're shopping in Berry. The other is the Celtic Festival where the committee run the scones and tea.

So, as you can see, we are wanting willing helpers to give the committee a hand. If you would like to join the committee, we meet every third Wednesday at 9.30 am at the Village. We would love to have you join the group.

**Trish Nicholson**

## Dancing for Joy

popular, latin, disco, exercising to music, easy community folk dances

- \* increase vitality & energy
- \* sharpen your brain
- \* improve balance
- \* have fun & make new friends

**Move It, Don't Lose It! No dance experience needed!**

**Thursdays**

**except first one of the month**

**Buy 5 classes to use at any time for \$80 (\$16 per class)**

**9.30 - 10.30am at Berry Uniting Church Hall  
77 Albert St**



**Marilyn - Ph: 0412 244 735 E: [info@marilynmartin.com.au](mailto:info@marilynmartin.com.au)  
[www.marilynmartin.com.au](http://www.marilynmartin.com.au)**



**'Proclaiming Christ,  
serving the community  
with love'**

## Berry Uniting Church

**77 Albert Street Berry**

**P: 4464 2904**

**E: [berryuniting@gmail.com](mailto:berryuniting@gmail.com)**

**Sunday Celebrations: 9.30am**

**Groups & Activities:**

- Bible Study Groups
- Fellowship Groups • Prayer Groups
- Social Craft Group
- Computers for Seniors
- Berry Apple Users Group
- Coffee and Friends
- Berry Community Library

**[www.berryuniting.org](http://www.berryuniting.org)**



# ANNUAL FLU IMMUNISATION CLINIC

*a simple and easy way to protect you and your family from Influenza*

Your Clinic will run for a week commencing

**Monday 6<sup>th</sup> May to Friday 10<sup>th</sup> May inclusive  
from 8:30am to 9:00am**

All patients of the practice are invited to arrive between these times to receive your flu injection, no appointment is necessary. Current recommendations are to have the vaccine later in season. We are awaiting the final vaccine formulations and deliveries from NSW Health.

## **High risk patients are Free of Charge**

(If you are over 65 years, Patients with a chronic disease, pregnant women, and children aged between 6 months and 5 years)

Low risk patients are invited to have the vaccine. This is a sound decision and can be provided for a fee of \$20. Your medical record will be updated accordingly.

We look forward to seeing you and administering the vaccine.



[www.berrymedicalcentre.com.au](http://www.berrymedicalcentre.com.au)

If you cannot attend between these times, or are new to our practice please book an appointment online or via telephone at a time that suits you best



22 Prince Alfred St Berry

Phone 4464 1577

Berry Medical Centre welcomes **Dr Tony Girgis** MBBS, B. Eng (Hons), M Eng to the practice, he has appointments available & is seeing new patients



SUBJECT	DETAILS
<b>Sustainability Workshops through Shoalhaven Council</b>	Next workshops will be held in Autumn. Past workshops have included Composting; Bokashi; Beeswax wraps; Natural cleaning; Healthy soils; Backyard chickens; and craft topics including Basket weaving with recycled materials, Japanese fabric gift wrapping (Furoshiki), and Altered book art projects. Bookings are essential. You may leave your contact details to be notified of upcoming events if bookings are full.
<b>Recycling the plastics that Council doesn't collect</b>	<p>The REDcycle program collects suitable plastics to be transformed into outdoor furniture, signage, bollards and other products. You can recycle biscuit packets (outer wrapper); bread bags (without the tie); bubble wrap, cellophane and large sheets used to wrap furniture and other products for delivery; cling wrap; Australia Post plastic sachets; chip, chocolate and snack wrappers (including silver-lined) wrap; netting produce bags (remove metal clips); rice bags; clear plastic wine bladders; squeeze pouches (eg baby food) with lid on; potting mix &amp; compost bags; zip lock bags; and green (polypropylene) bags. Plastics should be clean, dry, and cut to A3 size in the case of larger items. Not suitable for collection: rigid plastics; plastic containers &amp; bottles; bread bag ties; medication blister packs; film negatives and x-rays; balloons; adhesive tape; tinsel; coffee bags; drinking straws; foil, foam and polystyrene; clear vinyl packaging (eg quilts &amp; bedding); rubber and latex; foil based wine bladders; and laminated materials. To learn more, visit the website: <a href="http://www.redcycle.net.au">www.redcycle.net.au</a></p> <p>TerraCycle was established in 2001 as a means of dealing with hard to recycle items, with the goal of making these zero waste products. The company now runs programs in twenty countries, diverting plastics otherwise headed to landfill. TerraCycle has established separate collection programs including: cosmetic &amp; make up packaging; stationery binders; contact lenses (over 100,000 pieces of waste diverted from landfill in Australia in its first year of operation); toothpaste tubes &amp; toothbrushes; and coffee pods. TerraCycle has a points initiative and points collected may be used to make a donation to charity or school. To learn more visit the website: <a href="http://www.terracycle.com.au">www.terracycle.com.au</a></p>
<b>Alternatives to single use coffee cups</b>	Local cafes offering a discount when you bring your own reusable cup: Just Delicious, The Emporium Food Company, The Dairy Bar, Blue Goose Café (Gerrigong), Ninety One Junction (Nowra), Zest Café & Catering (Nowra), The Cake Store (Nowra) Green Caffein is an initiative launched in August 2018 in Kiama, as a swap and go reusable cup system. Perfect for the days when you forget your own cup. Participating cafes include: Il Locale, the Blue Swimmer in Gerroa, and another forty cafes across the Illawarra region. More information about the program can be found on Green Caffein's Instagram or Facebook pages.
<b>Berry Waste Depot Chemical Cleanout</b>	The Depot accepts computer and electrical equipment, electrical leads, recyclable metal, smoke detectors, compact and fluorescent light bulbs, car batteries, motor and other oils, gas bottles, water- and oil-based paints and batteries free of charge. The depot also offers free garden mulch. There is a modest charge for recycling some items, such as green waste, mattresses, or whitegoods. Open Friday to Monday (except public holidays 8.00 am – 4.00 pm). The next chemical cleanout will be Saturday 16 June at the council car park in Nowra, 9.00 am – 3.30 pm
<b>Illegal dumping</b>	Contact Shoalhaven Council Ranger Services on 4429 3433 (after hours 4421 3100).
<b>Berry Waste Depot free recycling service</b>	The depot accepts computer and electrical equipment, electrical leads, recyclable metal, smoke detectors, compact and fluorescent light bulbs, car batteries, motor and other oils, gas, water- and oil-based paints and batteries.
<b>Illegal dumping</b>	Contact Shoalhaven Council Ranger Services on 4429 3433 (after hours 4421 3100). If the matter is urgent, contact the Environmental Protection Agency on 131 555.
<b>Recycling / reuse at local shops</b>	Flavours Shoalhaven refill Morella Grove olive oil glass bottles. Take your own containers to Leaf Thai restaurant for meals, Il Locale for gelato, and the deli section at IGA. The Treat Factory will fill your container or glass jar for bulk dried fruit, nuts etc, during quiet periods. The Berry Farmers' Market has a plastic-free policy, so remember to take your own bags.
<b>Medication and Sharps Disposal</b>	Medically generated syringes, needles and sharps can be disposed of for free at the Berry Pharmacy. Take your sharps in a sealed puncture resistant container. The pharmacy will also safely dispose of out of date medication.
<b>Environmentally conscious brands to support</b>	IGA stocks: If You Care (household cleaning, cooking and storage products, toothbrushes); Ansell eco-rubber gloves; Ecostore cleaning products; Safe toilet paper (paper wrapping). Nourish Kitchen + Lifestyle stock beeswax wraps for food, as well as kits to DIY; White Magic cleaning and food storage products; Keepcups, Avanti, Tealogy, Casa Barista and Earth Bottles for your take away coffees and other beverages.
<b>Libraries: purchase less, read more</b>	Shoalhaven Council's library bus is parked in Princess Street just past the School of Arts building, every Friday from 2.00 pm to 4.00 pm. Berry Street Library in Broughton Place is sponsored by the Berry Alliance; borrow, read and return, or add a book for someone else to enjoy. Berry Community Library at the Berry Uniting Church is open Mon and Wed 1-4 pm, Tues, Thurs, Fri 10 am – 1 pm.

FOR DA'S VISIT: [www.berryforum.org.au](http://www.berryforum.org.au)

## Chair Yoga in Berry

for the wellbeing needs of the mature body

- \* stretch and strengthen without strain
- \* improve posture, balance & stability \* no floor postures
- \* better breathing \* relax body & mind



**Energising Chair Yoga**  
Wednesdays at St Luke's

Buy 5 classes use any time  
for \$80 (\$16) or Casual \$18

9.30 - 10.30 am

## Gentle Seniors ##  
Tuesdays (ph for details)



Contact Marilyn - Ph: 0412 244 735 E: [info@marilynmartin.com.au](mailto:info@marilynmartin.com.au)  
[www.marilynmartin.com.au](http://www.marilynmartin.com.au)



**SCOTS' PRESBYTERIAN  
CHURCH, BERRY**

**All Welcome!!!**

**Service Time: Sunday 10am**

**Sunday School: Sunday 10am**

**Minister Rev Isaac Jung - 4464 1020**

**Cnr Alexandra Street & Victoria Street  
Berry**

*Our purpose is to  
Love God with our heart, soul, mind and might  
and to  
Love our neighbour as ourselves.*

*Ordinary people worshipping an  
extraordinary God*

**[www.berrypresbyterian church.net.au](http://www.berrypresbyterian church.net.au)**



## TOWN CRIER

Keeping Berry Informed

The Town Crier is a community newspaper produced monthly by the Berry Alliance. Our current circulation is 2400 copies. The Town Crier is distributed in and around Berry. Additional copies are given to shops, cafes, hairdressing salons, doctors and restaurants within the township to alert tourists as to what's happening in Berry.

The Berry Alliance would like to thank advertisers for their support. It is only through advertising fees, subscriptions and sponsorships that our community paper can continue to provide such communication.

### ADVERTISING RATES DISPLAY ADVERTISEMENTS

1 Column - Single rate = \$110 or  
Repeat rate = \$297 (\$99 x 3 issues)  
Dimensions: 10cm high x 6cm wide

2 Column - Single rate = \$143 or  
Repeat rate = \$363 (\$121 x 3 issues)  
Dimensions: 10cm high x 12cm wide

3 Column - Single rate = \$176 or  
Repeat rate = \$495 (\$165 x 3 issues)  
Dimensions: 10cm high x 18.5cm wide

Full Page - Single rate = \$341 or  
Repeat rate = \$858 (\$286 x 3 issues)  
Dimensions: 27cm high x 18.5cm wide



# Calendar of Events

## MARCH/APRIL

**21 March** - Thursday - Berry Men's Shed are holding an Open Day from 9.00 am to 3.00 pm. The event will form part of the annual Seniors Week program.

Contact Richard Wiseman 4464 2619.

**23 March** - Saturday - Dean Bagnall will conduct a free Landholder's workshop on Fox Cage Trapping at Wesley Hall, Berry Uniting Church, 77 Albert Street from 2 to 5pm.

Sat 23rd March. Register by email to: davidr@npansw.org.au

**28 March** - Thursday - ADFAS Lecture Acquired Taste: The Invention of the Restaurant in 19th Century Paris presented by Sylvia Sagona. Berry School of Arts, Alexandra Street, Berry at 7.30 pm.

**3 April** - Wednesday - Autumn plant sale day - Berry Public School's Plant Propagation Nursery. 12.30 - 5.00pm.

**4 April** - Thursday - Autumn plant sale day - Berry Public Schools Plant Propagation Nursery. 3.00pm - 5.00pm.

**5 April** - Friday - Autumn plant sale day - Berry Public Schools Plant Propagation Nursery. 12.30 - 5.00pm

**6 April** - Saturday Berry Conversation featuring Lenore Taylor, the Walkley Award-winning Editor of The Guardian Australia from 3-5 pm at Berry Public School Hall. \$30, includes refreshments. Tickets are available Purchase at the Berry Music Centre, Queen Street or at [www.trybooking.com.au](http://www.trybooking.com.au) Enquiries: [berryconversations@gmail.com](mailto:berryconversations@gmail.com) or 0409 468 480.

**7 April** - Sunday - Garage & Verandah Sale starts at 11am (not earlier)  
- 78 Woodhill Mountain Road Berry. 4464 2446.

**7 April** - Sunday - Autumn plant sale day - Berry Public School Plant Propagation Nursery. 9.00am - 1.00pm

**13 April** - Saturday - Berry Cool Estate Market, 16 Coolangatta Road - Nursery, Café, Food Trucks, Markets, Live Music, Children's Activities, Pets Welcome.

**16 April** - Tuesday - Berry & District Garden Club monthly meeting, 7.30pm in St Luke's Church Hall, Princess Street, Berry

**21 April** - Sunday - At 2 pm, join the Friends of Meroo Union Church for their Anzac Commemoration Service Conducted by Revd. Ted Booker. Afternoon Tea will follow the Service. Located at the corner of Boxells Lane & Princes Hwy Meroo Meadow. Contact Rae Harris 4448 6048.

**24 April** - Wednesday - The Berry Branch of the Red Cross will be selling ANZAC biscuits as part of a fundraiser in Broughton Court.

**25 April** - Thursday - ANZAC Day - Parade assembles in Queen Street Berry CBD by 10.15 am, parade forms at 10.20 am and marches to the cenotaph where the Commemoration Service will be conducted.

### REGULAR EVENTS:

**Mainly Music** - for preschool-aged children and their carers. Every Tuesday during term time at 10am. Venue Berry Community Church, Schofields Lane. \$5

The Berry Computers for Seniors meets in the Berry Uniting Church hall on the first and third Wednesdays of each month from 9.00 - 10.30am.

**The 'Third Wednesday Book Group'** will meet in the Community Library June from 4-6pm. We bring along our favourite books or talk about our favourite authors and enjoy drinks and nibbles along the way. Everyone is welcome.

**The Berry Apple Users Group** meets on the 2nd Tuesday of the month at 7pm in the Friendship Room at the Uniting Church.

**Gentle Chair Yoga** - Every Tuesday 9.30 -10.30am except the first Tuesday of the month. Phone 0412 244 735 for class details.

**Energising Chair Yoga** - Every Wednesday 9.30 -10.30am at St Luke's Hall, except the first Wednesday of the month. Phone 0412 244 735 for details. Class includes strength, flexibility, balance whilst sitting or standing using chair as support. Buy 5 classes to use at any time for \$80 (\$16 per class) or casual rate \$18. No term fees.

**Dancing for Joy** - Every Thursday 9.30 -10.30am at Berry Uniting Church Hall, except the first Thursday of the month. Phone 0412 244 735 for class details Suitable for everyone. No partners needed. Variety of dance styles to exercise your brain, improve balance, increase vitality and Joy. Buy 5 classes to use at any time for \$80 (\$16 per class). No term fees.

## FUTURE DATES

**2 May** - Thursday - ADFAS lecture on Laura Knight: From Newlyn to Nuremberg, 7.30 pm at Berry Uniting Church Hall, Albert St Berry 2535. For those who would like to add to their stitching stash, or start a new hobby, there will be commercial stallholders, and works made by the Redberry Quilters for sale. There will also be some display quilts available for purchase. At the end of the Quilt Show, we will draw the winning ticket of the quilt raffle, tickets for which will be available at the Quilt Show or by contacting RedBerry Quilters members or the Secretary at [redberrysec@gmail.com](mailto:redberrysec@gmail.com)



# Annual Events Guide for Berry 2019

For more information regarding each event please refer to the community group listing on the next page.

Registered Community Groups organising annual events are welcome to contribute and advise of further information or changes to listed information.

MONTH	EVENT
<b>RECURRING MONTHLY EVENTS</b>	<p>First Sunday of the Month</p> <ul style="list-style-type: none"> <li>• Penwood Railroad Inc, a scenic miniature railway open from 10:30am till mid afternoon. 215A Princes Highway - Jaspers Brush NSW - Ph: 02 4464 1201</li> <li>• Berry Country Fair (Berry Markets). Approximately 200 stalls selling handmade products, arts and crafts, fresh produce and more. Berry Showground</li> <li>• Berry Cool Estate Market, 16 Coolangatta Road - Every second Saturday of the month. Nursery, Café, Food Trucks, Markets.</li> </ul>
<b>JANUARY</b>	
<b>FEB</b>	Annual Berry Show Berry Showground
<b>APRIL</b>	First Sunday in APRIL is Clean Up Australia Day – See entry under 3rd APRIL on opposite page.
<b>APRIL</b>	ANZAC Day Youth Week Easter Celebrations
<b>MAY</b>	Berry Celtic Festival, Berry Showground National Motoring Heritage Day, Berry Showground
<b>JUNE</b>	Saturday 16 June Berry Waste Depot Chemical Cleanout
<b>JULY</b>	
<b>AUGUST</b>	3 - 4 August The Berry Camellia & Floral Show event is held at the Berry School of Arts, Alexandra Street, Berry. Saturday noon to 4.00pm and Sunday 10.00am to 2.00pm. 4th & 5th - Annual Camellia and Floral Show
<b>SEPTEMBER</b>	Berry Small Farm Field Day 7 September at 2pm - St Lukes High Tea
<b>OCTOBER</b>	17 - 20 October Berry Gardens Festival showcases beautiful gardens in and around the Berry area. This year is the 30th anniversary of the staging of this wonderful event. 18-21st - Berry Garden Club's Annual Garden Festival
<b>NOVEMBER</b>	Remembrance Day
<b>DECEMBER</b>	3rd DECEMBER Berry Men's Shed Annual Garage Sale Berry Merry Christmas Carols in the Park, Apex Park Rotary's New Year's Eve Fireworks Berry Showground

## Bush Fire Danger Period and Fire Permits

A Fire Permit will no longer be required for most burning activities from 1 April 2019. However, we do remind you that if you wish to burn off, you need to:

- Notify Shoalhaven Fire Control on 4424 4424 during business hours at least 24 hours prior to burning off.
- Notify all adjoining landowners (including those separated by a road) at least 24 hours prior to burning off.
- Check that a Total Fire Ban has not been declared.

### THINKING OF VOLUNTEERING

Joining the Broughton Vale / Berry Rural Fire Brigade is an excellent way to give back to your community. We invite you to come along to our meeting - held on the last Tuesday of each month at 7pm at the Fire Station at 82 Albert Street Berry or contact us by email - [broughtonvalerfb@gmail.com](mailto:broughtonvalerfb@gmail.com)

For more information go to <https://www.rfs.nsw.gov.au/fire-information/BFDP>

## GARAGE / VERANDAH SALE

**Sunday 7th April**

Commencing at 11am (no earlier)  
78 Woodhill Mountain Road Berry

**Variety:** Furniture, including tables, chairs coffee tables, cupboards etc., bric a brac, Jetmaster fire and more.

## EXPRESSION OF INTEREST

Expressions of Interest are invited to lease downstairs office and / or upstairs meeting room at the Berry School of Arts.

Expressions of Interest documentation can be downloaded free of charge from Council's Tenderlink portal: <http://www.tenderlink.com/shoalhaven>

### Closing date:

10am Wednesday 24 April 2019

### Enquiries:

Donna Sullivan  
Property Officer 4429 3373

# Support locally owned businesses.

## TOWN CRIER CLOSE OFF DATES

**TOWN CRIER CLOSE OFF DATE  
FOR ADVERTISING AND  
COMMUNITY GROUP ARTICLES.  
5PM DEADLINE**

MAY - 17/4/19

JUNE - 15/5/19

JULY - 12/6/19

AUGUST - 17/7/19

SEPTEMBER - 14/8/19

OCTOBER - 11/9/19

NOVEMBER - 16/10/19

DECEMBER - 13/11/19

# Community Groups

## BERRY COMMUNITY GROUPS

**Beaumont Rural Fire Brigade** 0416 754 272  
beaumontvrfb@gmail.com

**Berry Alliance Inc.** 0449 569 059  
PO Box 202 Berry 2535  
info@berryalliance.org.au  
www.berryalliance.org.au

**Berry Alliance Town Crier** 0428 037 572  
PO Box 202 Berry 2535  
towncrier@berryalliance.org.au  
www.berryalliance.org.au

**Berry Chamber of Commerce & Tourism Inc.**  
PO Box 216 Berry 2535 4464 3122  
info@berry.org.au www.berry.org.au

**Amnesty International Berry Local Action Group**  
PO Box 397, Berry 4464 2879  
Contact Susan Locke  
info@berryamnesty.happenings.id.au

**Australian Red Cross** 4464 2479  
Honorary Secretary - Margaret Walsh 21  
Windsor Drive Berry - 1st Wednesday each  
month at 2.00pm - Berry Uniting Church

**Berry Alcoholics Anonymous** 1300 903 392  
Meets every Thursday Night at 7.30pm,  
Uniting Church Hall Annex,  
77 Albert Street, Berry - Garry: 0420 932 494

**Berry Al Anon Family Group For Family & Friends of Problem Drinkers** 4448 8231  
Meets in the Friendship Rooms of the Uniting  
Church 77 Albert Street Berry on Mondays at 7pm

**Berry Forum (Community Consultative Body)**  
www.berryforum.org.au  
2nd Thursday bi-monthly 7.30pm at the  
School of Arts Berry

**Berry Community Activities Centre Inc.** 4464 1476  
Berry Community Craft Cottage  
12 Prince Alfred St Berry 2535  
1st Monday Monthly, 5pm @ Muir House  
berrymarkets@bigpond.com

**Berry Courthouse Conservation Committee**  
PO Box 218 Berry 2535 0458 369 266  
2nd Monday Bi-monthly at 5.30pm  
at the Berry Courthouse  
functions@berrycourthouse.org.au  
www.berrycourthouse.org.au

**Berry Community Library** 0425 220 258  
Opening hours: Monday & Wednesday  
1pm-4pm Tuesday, Thursday, Friday 10pm-1pm  
berrycommunitylibrary@gmail.com

**Berry Evening View Club** 4464 1191  
Secretary, PO Box 275 sel4957@bigpond.net.au  
Meets 3rd Wednesday monthly, 6.30 pm  
at Berry Bowling Club

**Berry Masonic Village Auxiliary Inc** 4464 1774  
Mail: 42 Albany Street, Berry, NSW, 2535  
3rd Wednesday monthly, 9.30am in Activity  
Hall, Albany Lane, Berry Masonic Village

**Berry Meals on Wheels** 4464 1774  
PO Box 221 Berry NSW 2535  
3rd Monday monthly at 9am RSL Hall Berry

**Berry Men's Shed** 4464 3956 / 4464 2619 A.H  
PO Box 103 Berry 2535  
richardcwiseman@hotmail.com  
Tuesdays and Thursdays 9am-4pm  
North Street Berry www.berrymensshed.com.au

**Berry RSL Sub Branch**  
PO Box 3307 North Nowra 2541 -  
stuartfchristmas@gmail.com  
1st Tuesday Monthly at 9.30am  
Sub Branch Hall 26 Alexandra St Berry

**Berry Rotary Club** 0408 979 337  
PO Box 81 Berry 2535  
barker\_killaloe@hotmail.com  
Every Thursday 6pm for 6.30pm at  
Bowling Club - www.berryrotary.org.au

**Berry Show Society Inc.** 4464 1567  
PO Box 173 Berry 2535  
Meet 1st Tuesday monthly at  
Committee Rooms at the Showground  
berryshow@virtualcity.com.au  
www.berryshow.org.au

**Berry Showground Management Committee**  
PO Box 443 Berry NSW 2535 -  
berryshowground-camping@gmail.com  
Meet 2nd Monday Bi-monthly 7.30pm  
Old Council Chambers  
24 hour Caretakers / Bookings  
Caretakers 0427 605 200

**Boomerang Bags Berry** 0416 181 543  
Meetings: 1st Tuesday of the month:  
Committee Rooms, Berry Showground.  
Contact: Katrina Underwood 0416 181 543  
Contact Elizabeth Dubbelde 0431 663 189

**Country Women's Association  
- Berry Branch**  
PO Box 321 Berry 2535  
2nd Friday each month at 12.30pm  
in the CWA Rooms, Victoria Street  
Contact Emily Boorer 0417 423 018

**Conservation Committee for the Berry Railway  
Station Precinct**  
Meets fortnightly at the Berry Museum  
Contact: sandraberner@hotmail.com

**David Berry Hospital Auxiliary** 4464 1774  
PO Box 285 Berry 2535  
bke25349@bigpond.net.au  
2nd Monday Monthly, 12.30pm  
David Berry Hospital Conference Room

**Freemasons Lodge Broughton 131** 4421 7346  
PO Box 2092 Bomaderry NSW 2541  
Secretary: John Dyason  
lodgebroughton131@gmail.com

**Lodge Broughton 131** 4421 8026  
P.O. Box 2092 Bomaderry 2541 NSW  
lodgebroughton131@gmail.com  
Meets 1st Wed. of each month except  
Jan. at the Agricultural Hall Berry

**Probus Club of Berry** 4464 3525  
PO Box 68 Berry 2535  
berryprobus@gmail.com  
Meets 2nd Tuesday monthly, 9.30am  
Berry Masonic Village Hall

**Shoalhaven Poultry Group** 0410 548 704  
161 Kangaroo Valley Road  
1st Wednesday each month above address  
info@shoalhavenpoultry.com.au  
www.shoalhavenpoultry.com.au

**Slow Food to Berry to Jervis Bay**  
If you would like more information on our  
planned Calendar of Events or to JOIN  
then please contact Jenny Crosby 0424615948  
or Marilyn O'Dowd 0416018977  
email info@slowfoodbjb.org.au website www.  
slowfoodbjb.org.au

**St. Vincent de Paul Society Client Help Line:**  
PO Box 77 Berry - Ph 4464 3940 4421 0390  
Vinnies Boutique Shop 117b Queen St Berry  
Conference meets every 1st Mon.  
7pm St. Patrick's Hall

**Zonta Club of Berry**  
Rosemary Courtney (0430 359 443)  
or 4464 2653 (Leonie Winlaw)  
PO Box 302 Berry 2535  
Email: berry@zontadistrict24.org  
www.zontadistrict24.org  
Meets 4th Tuesday monthly for dinner

## ARTS

**Berry School of Arts**  
Office open Thurs and Fri 10am till 3pm.

**Australian Decorative Fine Arts Societies - Shoalhaven**  
PO Box 269 Berry NSW 2535 4464 3053  
shoalhaven@adf.org.au  
Monthly, 7.30pm at The Berry School of Arts

**Berry & District Historical Society Inc**  
PO Box 153 Berry 2535 4464 3097  
berrymuseum@bigpond.com  
www.berryhistory.org.au

**Berry Silver Band (est. 1897)**  
Owen 4464 1250 / Kaye 4465 1240  
6 Clarence Street Berry 2535  
kayecj@westnet.com.au  
Meet Monday evenings 7.30-9.30pm,  
Agricultural Hall, Berry Showground

**Berry Spinners and Weavers**  
Contact the secretary (Alison) on 0422 760 363  
PO Box 377 Berry 2535  
berryspinnersandweavers@gmail.com  
Thursdays 10-12noon at Berry Showground Hall

**Cantares: Community Choir**  
Monday 7.30 - 9.00pm  
Scots' Presbyterian Hall, Alexandra Street Berry  
Contact: Peter Dalmazzo 4448 6164

**Knit with Love**  
Lyn 4464 3651 c/- 34 Princess St Berry 2535  
terryandlyn@gmail.com Meets Every Friday  
1pm - 3pm St Luke's Anglican Church Hall

**RedBerry Quilters**  
Meetings held on the 4th Friday of each month  
9.30am-1.30pm. Sewing Days held on the 2nd  
Friday of each month 9.30am-1.30pm at  
St Luke's Anglican Church Hall, Princess Street  
Please contact mail to:  
secretary@redberryquilters.org



## CHURCHES

**Berry Community Church** 4464 2315  
8 Schofields Lane Berry  
Services 9.00am, 10.00am and 5.00pm  
info@berrycommunitychurch.org

**Berry Uniting Church** 4464 2904  
77 Albert Street Berry  
Services at 9.30am berryuniting@gmail.com

**Meroo Union Church** 4448 6048  
Monthly service at 2pm  
(3rd Sunday of the month)  
Corner of Boxells Lane & Princes Hwy,  
Meroo Meadow. Contact Rae 4448 6048

**St. Luke's Anglican Church** 4464 1058  
68A Princess Street, Berry 2535  
office@berry.anglican.asn.au  
www.berry.anglican.asn.au

**St. Patricks Catholic Church** 4423 1712  
Albert St. Berry - Normal Mass times:  
Sunday 8am Tuesday 5.30pm  
Community Group PO Box 304 Berry meets  
2nd Monday 7pm St. Patricks Hall

**Scots' Presbyterian Church in Berry**  
E. isaac.jung@hotmail.com 0405 139 031  
H. 81 Victoria St Berry

## EDUCATION AND PLAYGROUPS

**Berry Apple Users Group** 0416 168 638  
P.O. Box 103, Berry, 2535  
Meets at 7.00pm on the 2nd Tuesday of the  
month (except January) at  
Berry Uniting Church Hall,  
77 Albert Street, Berry  
Email: berryappleusersgroup@gmail.com

**Berry Community Pre-school** 4464 1764  
PO Box 143 Berry 2535  
berrypreschool@bigpond.com  
www.berrypreschool.org.au

**Berry Computers for Seniors** 4421 3270  
PO Box 103 Berry 2535  
1st and 3rd Wednesdays of each month,  
9.00 - 10.30am, Uniting Church Hall,  
77 Albert Street, Berry

**Berry Ethics Society** 0451 153 332  
PO Box 363 Berry - Meets 1st Monday of each  
month at the Berry Hotel

**Berry Playgroup**  
Berry Community Church Hall  
Schofields Lane, Berry. Fridays 10.00-12.00  
Facebook: The Berry Playgroup  
Email: berryplaygroup@hotmail.com

**Berry Public School P&C Association** 4464 1158  
PO Box 222 Berry 2535  
berrypandc@gmail.com

**Mainly Music** 4464 1693  
Berry Community Church Hall -  
for children under five and parent /carers  
Meets Tuesdays during school term  
10-11.30am \$5 per family

## GARDENING AND LAND CARE

**Berry & District Garden Club** 4464 1191  
PO Box 122 Berry 2535  
3rd Tuesday Monthly, 7.30pm  
St Luke's Church Hall, Princess Street  
Mary Seelis - Secretary  
www.berrygardens.org.au

**Berry Landcare** 4464 2241  
PO Box 422 Berry NSW 2535  
berrylandcare@gmail.com  
See monthly article for working bees

**Berry Public School Plant Propagation Nursery**  
Lyn 02 4464 3911  
Meet Thursday afternoons during school hours  
lyn-clark@outlook.com.au

**Brogers Creek Landcare** 4465 1482  
53 Wattamola Road Wattamola NSW  
Last Saturday of each month 2.30-4.30pm

**Gateway Community Garden**  
141 Woodhill Mountain Road  
All welcome, plots available.  
Contact: Tom Darby 4464 2859

**Hands Across NSW Inc** 4446 0567  
PO Box 162 Cambewarra NSW 2540  
Meets 1st Sunday, monthly at Broughton Lodge,  
Berry Agriculture Hall

## POLITICAL GROUPS

**Australian Labor Party Berry Branch** 0429 012 796  
Meets 2nd Wednesday each month,  
6.30 pm Hotel Berry  
secretarybshalp@gmail.com  
PO Box 474 Berry 2535

**Liberal Party of Australia - Berry Branch**  
Meets 1st Monday of the month  
06.30pm for 07.00pm start at the Berry Hotel

## RECREATION

**Berry Bridge Club INC** 4464 3009  
PO Box 366 Berry 2535  
mccorran@shoalhaven.net.au  
Meets Saturdays @ 12.45pm-4.30pm at the  
Masonic Lodge Community Hall

**Berry Camera Club** 0488 031 961  
Meetings on 4th Wednesday of Each Month  
6:00pm @ Berry Bowling Club  
Info: www.berrycameraclub.com  
fb:BerryCameraClub

**Berry Crafters & Quilters** 4464 3788  
Meets each Wednesday 10am-4pm at  
Muir Cottage, Prince Alfred Street

**Penwood Rail Road Inc.** 4464 1201  
B215a Princes Highway Jaspers Brush 2535  
Running day 1st Sun monthly - visitors welcome

**Shoalhaven Historic Vehicle Club Inc.** 4464 1723  
PO Box 1, Nowra NSW 2541

## SPORT

**Berry Hockey Club** 0412 218 704  
PO Box 4055 Nowra East NSW 2541  
www.berryhockeyclub.com.au

**Berry Netball Club** 0417 285 789  
1 Barwon St Bomaderry Meets monthly at the  
Great Southern Hotel MT816834@bigpond.net.au

**Berry Men's Bowling Club**  
Berry Men's Bowling Club  
PO Box 139 Berry NSW 2535 Club 4464 2995  
President: L McNamara 4464 1868  
Bowls Organiser: D Lambert 4464 2332  
Bowls Bookings: 0475 768 249

**Berry Junior Mixed Touch Football** 0431 530 543  
7 Boran Place Berry becantom2@bigpond.com  
School term 4 - Thursday 4pm till 6pm at the  
Berry Sporting Complex, North Street Berry

**Berry Riding Club** 4464 1143  
445 Coolangatta Road Berry 2535  
1st Tuesday monthly at the Berry Hotel  
jasiy@bigpond.net.au www.berryridingclub.com

**Berry Shoalhaven Head Rugby League Football Club**  
First Wednesday evening of the month at  
The Berry Hotel - 7pm Great Southern Hotel,  
Berry. Email: berryjuniorleague@gmail.com  
www.facebook.com/groups/325991097440833/

**Berry Shoalhaven Heads Cricket Club**  
0422 688 901  
PO Box 206 Berry NSW 2535  
www.bshcc.nsw.cricket.com.au  
2nd Monday of each month  
during cricket season at the Berry Hotel

**Berry Shoalhaven Heads Junior League**  
0414 973 795  
PO Box 162 Berry 2535 bshjrflc@hotmail.com  
First Wednesday of the month  
7pm at the Berry Bowling Club

**Berry Tennis Club**  
PO Box 133 Berry NSW 2535  
e: berrytennis@hotmail.com  
Meet 7pm second Thursday of every second  
month at Clubhouse at Tennis Courts

**Berry Women's Bowling Club**  
Meet Tuesdays and Thursdays 9am during  
daylight savings; 9.30 in winter @ Berry Bowling  
Club. Contact Heather Fealy 4464 3624 or  
Pam Tulloch: 4464 2284

**Diamond Calisthenics Club**  
Jodie Dearsley 0414 655 129  
Classes for ages 3-100 held Tuesdays at Berry  
School of Arts, Cnr Alexandra & Princess Sts  
www.diamondcalisthenics.com  
diamondcalisthenics@hotmail.com

**Shoalhaven Heads Surf Life Saving Club**  
Mackintosh Street Shoalhaven Heads  
www.headssurf.com.au Facebook: Shoalhaven  
Heads Surf Life Saving Club. Phone:  
0432 331 915 or info@headssurf.com.au

# EMERGENCY 000

Police Assistance Line (non-urgent Police reports) 131 444  
Berry Police 4464 2175 - Fire and Rescue NSW 4464 1008 or 000  
Rural Fire Brigade (Broughton Vale) 4464 1522  
SES - For Emergency help in floods and storms 132 500



## Would you sell your house if the price was right?

**Find out more  
about becoming a  
“silent seller” with  
Elders Berry.**

Get a free, no obligation appraisal from Tim or Nicholas and we can add your home to our list of “silent sellers” – property owners interested in selling their home without the cost of marketing or the need of open houses or inspections by spontaneous buyers.

Buyers come to us all the time looking for particular types of property in and around Berry. If they’re willing to pay the price you want for a property like yours, we bring them to you.

**What have you got to lose? Get in touch today to book your appraisal or find out more.**

***Elders***

Berry

**121 Queen St, Berry • 4464 1600 • [www.eldersberry.com.au](http://www.eldersberry.com.au)**





## Riding Fun for Everyone



Our riding club calendar is filled with exciting events for all levels of riders, and with such fine weather of late we've hosted a number of great activities, both social and competitive. A Working Equitation competition was held on the first weekend of March, with riders of all ages taking part in a great day of friendly competition. Congratulations to everyone who participated, and particularly those who took home ribbons in each of the classes. We are excited that the sport of Working Equitation continues to grow, and that Berry Riding Club can play a part in supporting its development. The next Working Equitation weekend of practice and competition is on 4-5 May.

We also held a weekend of jumping, with a derby day competition and then clear round showjumping. It's wonderful to have new faces joining us at these events, bringing their horses out to practice and build confidence in a supportive and fun environment.

March was also the time for lots of activity around the grounds, with significant effort put in by our helpers. As a result the grounds have never looked better! A lot of the work was in preparation for the Pink Ribbon Horse Festival, held on the first weekend in April, raising funds for the National Breast Cancer Foundation. The event is always a highlight on our calendar, and attendees travel from around the region to join the fun.

A reminder, too, for those who are keen to ride mid-week that we have our Galloping Grownups riders at the grounds on Tuesdays and Thursdays. For more information on GGS or any of our events, check our website [www.berryridingclub.com](http://www.berryridingclub.com) or find us on Facebook and Instagram. Happy Riding!

APRIL 2019



## Slow Food®

### Berry to JB

Our annual fundraising event was held in the Povey's garden allowing members and friends a great time to mingle and enjoy each other's company plus those delectable yummy flavours ... slow food style. Thank you to all who helped to make this event such a huge success.

Naturopathic Herbalist Marilyn O'Dowd shared her passion for and expertise in fermentation at Saddleback's workshop in March. The workshop included making kimchi, sauerkraut, cultured butter, pickled vegetables, fermented drinks and sourdough. It was very generous of Marilyn to share loads of information and her skills.



In March our Autumn Garden Clinic was held at Marilyn and Roger's. Jane Mowbray, President of Shoalhaven Permaculture Network attended, and her talk was most interesting providing lots of useful and welcome information to participants.

Also, in March a group travelled to Cabramatta where they spent time shopping as desired in wonderful supermarkets and vegetable stores. Their trolleys were full of varied and delectable goodies.

Our next committee meeting is Monday 1 April commencing at 10:00am followed by lunch around 12 at a selected local restaurant.

With annual memberships, together we can make food better ... slowly ... but surely.

**OUR  
WEBSITE IS  
NOW UP AND  
RUNNING**

If you would like more information on our planned Calendar of Events or to JOIN then contact Jenny Crosby 0424 615 948 or Marilyn O'Dowd 0416 018 977 or email [info@slowfoodbjb.org.au](mailto:info@slowfoodbjb.org.au) or visit our website

**[www.slowfoodbjb.org.au](http://www.slowfoodbjb.org.au)**

**Rotary**  
Club of Berry



## University Grant

**Each year the Rotary Club of Berry awards two undergraduate students with an "open gift" grant towards the costs of their university studies.**

**There are 2 grants offered.**

- **The Jack 'Mo' Higgins Memorial University Grant of a \$1000 for students under the age of 25.**
- **The Jack 'Mo' Higgins Mature Age University Grant of a \$1000 for students over 25 years of age.**

**Applicants must be:**

- A resident of, or have come from, the areas of Berry, Gerringong or Shoalhaven Heads.
- Studying full-time at a university in NSW or the ACT.
- An Australian citizen or a permanent resident of Australia.

**Application Closing date: Sunday 28 April 2019**

To find out more: contact Rotarian Shona Gibson 4464 1810 or email [berryrotary@gmail.com](mailto:berryrotary@gmail.com)

**[www.berryalliance.org.au](http://www.berryalliance.org.au)**

The Town Crier - Page 21



# Berry Vet Clinic

## GET TO KNOW YOUR LOCAL VET

When you visit one of the Berry Vet Clinic practices, you will meet members of our wonderful team of Vets and Nurses. You may also see them out and about in the local community. Each member of our team has a passion for animals and have many of their own to care for. Here is a profile on our very own Dr Sam.



Sam with her dogs Wilson and Huey.

### Dr Sam Singleton BSc BVMS (Hons)

Sam grew up on the outskirts of suburban Sydney where she worked for the local vet after school. She was also an obedience instructor for the local dog training club and a member of ORRCA (a whale rescue group) where she was involved in releasing whales back into the ocean after being stranded.

After completing university, Sam worked in Perth for a couple of years, before moving back to the east coast and practicing in Sydney. In 2007, Sam and her husband packed up the kids, escaped the city, and headed for the South Coast. She joined the team at Berry Vet Clinic in early 2018 and is a vibrant and popular member of the team.

Sam enjoys the challenge and variety of work in mixed practice. No day is ever the same, which is all part of the appeal of veterinary medicine. She has an interest in rehabilitation, whether that be helping an animal athlete perform at their peak, aiding in the recovery from surgery or ensuring that elderly animals maintain their mobility. Sam shares her home with her husband and kids, plus dogs, a cat, horses, budgies, chickens, geese and fish. When not at work, she enjoys riding the horses and spending time with her family in the bush or at the beach.

### Pet rehabilitation and physiotherapy

Mobility in all pets is an important part of achieving good quality of life. Sam is passionate about treating animals that require therapeutic massage and manipulation to achieve this outcome. She will work with you to ensure your older pet is pain free and can continue to enjoy walking and other activities. With Winter fast approaching, this is an opportune time to have an arthritis check-up.

Sam also works closely with the Physiotherapists from Capital Animal Physiotherapy. Animal Physiotherapists must first be qualified as human Physios before completing further study to treat animals. This training means we will offer exceptional and tailored therapeutic care.

If your pet is experiencing aged or arthritis related discomfort or pain, please call the clinic to book a consultation with Dr Sam Singleton.

**Contact us on (02) 4464 1899 to make an appointment at one of our clinics today.**

#### Berry Vet Clinic

84 Queen Street  
Berry NSW 2535

Open: Mon-Friday  
8am-6pm,  
Sat 9am-12

#### All Creatures Shoalhaven Heads

5/121 Shoalhaven Heads  
Road, Shoalhaven Heads  
NSW 2535

Open: Mon-Fri 8am-5:30pm,  
Sun 10am-12

#### Kangaroo Valley Consulting Room

162 Moss Vale Road  
Kangaroo Valley NSW 2577

Open: Tue-Thu 2-4pm

#### All Creatures Mobile Vet

Personalised Veterinary care  
at home

By appointment  
[www.allcreaturesmobilevet.com.au](http://www.allcreaturesmobilevet.com.au)

Ph: (02) 4464 1899 Email: [info@berryvet.com.au](mailto:info@berryvet.com.au) Web: [www.berryvet.com.au](http://www.berryvet.com.au)  
**House calls at no extra charge and 24 Hour emergency service available**



# BERRY CWA



We have had a very busy and productive start to the year. We are pleased to announce we were successful with our application for the Potts Point \$10,000 grant for a new kitchen in our CWA rooms. This year our members celebrated 65 years of sandwich making for the Berry show.

Garth Boon was our guest speaker at our meeting on the 8 March. Garth brought members up to date on the services provided by the Shoalhaven Community Transport Service some of which are: transport for medical appointments, social and shopping outings, visiting loved ones in hospital with a mission to provide the best quality transport to assist clients to remain living independently in their own homes for as long as possible. During April our members will take part in the Associated Country Women of the World's (ACWW) "Walk the World" event. The aim of this event is to raise awareness of ACWW's work, promote the organisation and raise funds. The funds raised will go to

further develop the ACWW's aims of raising the standard of living for rural women and their families through education, training and community development programmes, supporting educational opportunities for women and girls and help eliminate gender discrimination.

The CWA Choir meets every Friday in the CWA rooms, from 9.00am-10.30am. The choir's objective is to entertain residents at the local nursing homes and recently entertained seniors at the St Luke's Luncheon during Senior's Week at which they were very grateful for the delicious lunch provided.

You don't have to be a member of the CWA to join our Choir so why not come along.

Our craft groups meets every Wednesday in the CWA rooms at 9.30 and all visitors are welcome.

Our next meeting will be at 1pmm on Friday the 12 April 2019 at our CWA rooms, 79 Victoria St. Visitors are welcome.

**Joan Cooper, Publicity Officer**

*Pic: Berry CWA Members making sandwiches at the Berry Show*

## THE BERRY COOL ESTATE



**TURN AT THE FIRE ENGINE & T – REX**

**16 COOLANGATTA ROAD - BERRY / COOLANGATTA NSW 2535**



### **BERRY COOL NURSERY**

**RETAIL NURSERY AND PRODUCTS**

**PRE-LOVED – VINTAGE – RETRO WARES AND GIFTS**

**CALL KIMMY - 0491 488 355**

### **THE LAZY GARDENER TOO**

**LANDSCAPE SUPPLIES**

**SOIL – COMPOST – PEBBLES – STONES – ASSORTED MULCH**

**CALL GLYN - 444 88 355**

### **CAFE**

**COUNTRY STYLE COOKING – CAKES - TREATS**

**HOME MADE ICE CREAMS – COFFEE & DEVONSHIRE TEA**

**CALL CHRISSY - 0455 876 064**

### **BERRY COOL MARKETS**

**2<sup>ND</sup> SATURDAY OF EVERY MONTH 9am till 3pm**

**VARIETY MARKET STALLS AND FOOD VANS**

**CALL KIMMY - 0491 488 355**

### **BERRY COOL EVENTS & STORAGE FACILITIES**

**SPECIAL EVENTS AND FUNCTIONS & YARD AND SHED STORAGE**

**CALL KIMMY - 0491 488 355**



## SHED SCHOLARSHIP AWARD TO NOWRA TAFE STUDENT

The Berry Men's Shed awards a number of Scholarships to Schools and Colleges in the Nowra area and each winning student who is awarded a scholarship is requested to visit the Shed with a member of staff from their school and talk to our members about what they plan to do with the money received. John is currently studying Hospitality Management at TAFE and working part time at the new restaurant at Shoalhaven Heads.

Margaret was very appreciative of the Scholarship program undertaken by the Shed and acknowledged that the program was now in its fifth year.

As a result of our very successful garage sale in November, together with a contribution from the Berry Uniting Church, we have been able to write out to the four schools and colleges to inform them that the program will be able to continue into 2019.

The Shed as usual is very busy making and repairing items brought in by members of the community and next week we will be holding our annual Open Day and all members of the community are welcome to attend.

If you have anything that is broken and needs repair please bring it and let us have a look to see how we can assist you. One of our current jobs is making timber supports for Sculptures in the Valley which is being held in May at Kangaroo Valley. The Shed is open on Tuesday and Thursday, please phone on those days 4464 3956 and speak to the supervisor on duty

**Richard Wiseman  
Public Relations**



*Phil Reid, President of the Berry Men's Shed, Margaret Brightman, Campus Manager, John Bellenger, Scholarship winner and Richard Wiseman, Public Relations BMS.*



# Raine&Horne Berry

You've heard the old saying  
"slow and steady wins the race" -  
well the stats are on the board...  
the market may be slower but our  
agents are winning the race!



PRINCIPAL/SALES  
Jacqui Crapp  
0429 104 011



SALES  
Kimberley Clarke  
0418 204 518



SALES  
Alex Cochrane  
0412 081 600



PROPERTY MANAGER  
Amy Jarrett  
0421 325 513

## NEW LISTINGS

309C Kangaroo Valley Road, Berry  
2 Windsor Drive, Berry  
1 Parker Crescent, Berry  
465 Strongs Road, Jaspers Brush  
3 Lynburn Avenue, Bomaderry  
44 Goorاما Drive, Cambewarra Village

## SOLD

40 Jindalee Crescent, Nowra  
44 Goorاما Drive, Cambewarra Village  
56 Kardella Avenue, Nowra  
36 Queen Street, Berry

Proudly brought to you by the agents  
most active in the 2535 postcode

# Raine&Horne®

02 4464 1300

[www.rh.com/berry](http://www.rh.com/berry)



## Berry & District Garden Club News



SECRETARY MARY SEELIS 4464 1191 VISIT US ON [www.berrygardens.org.au](http://www.berrygardens.org.au)

Blocks on our new estates and townhouse sites will provide challenges for their incoming residents. Building rubble, compacted soil from construction, dry conditions, and few shade trees will all combine to create difficult conditions on which to establish a new garden.

Membership of the Berry & District Garden Club is the ideal reference point for incoming, inexperienced homeowners. Help will come from our specialised workshops, such as soil conditioning for our local environment; pruning fruit trees and ornamentals; propagating from cuttings; and lawn repair. Then at our monthly meetings, along with interesting speakers, you'll find expert advice on problems with pests and diseases; a sales table with dirt-cheap plants; and Answers to your many Questions.

Day trips and visits to local gardens complete the membership package. But remember that our motto is: Friendship through Gardening. Many new arrivals to the Berry area will welcome this opportunity to learn more about gardening and to make new friends. This month we are also providing rosemary for Anzac Day remembrance and we will be tidying up the RSL Memorial. Join us.

We welcome visitors, particularly new residents, to our meetings, held each month on the third Tuesday in St. Luke's Church Hall. We invite you to arrive for a cup of tea/coffee at 7:00 pm for our meeting's commencement at 7:30 pm. Our next meeting is on 16 April.

Our website, [berrygardens.org.au](http://berrygardens.org.au) contains a host of information, so do take a look.

Our Secretary, Mary Seelis, is your contact for more information or general enquires.



CHECK OUT OUR FACEBOOK PAGE ALSO

**Our motto: Friendship through Gardening.**

To find out more about our club, please contact our secretary, Mary Seelis, on 44641191 or visit us at [www.berrygardens.org.au](http://www.berrygardens.org.au)



# view

voice, interests and  
education of women

No wonder the year goes so fast! January School Holidays and getting over Christmas, February Show season and the AGM for the Berry Evening View Club - which is why you have to put up with me for another year as nobody put their hand up to take my job, so I took it on again. Okay, that's enough with the cheering.

We still have some minor positions available which, although minor, still have an important part in our Committee. We join the Club to help the Smith Family who in turn help folk out that are doing it hard. We have two 'Learning for Life' children that we help and raise a certain amount for each year. This effort requires all our members to help whether it be giving ideas on how to raise the money or participating in our fund-raising events - we all help in some way or another.

So, a challenge to the residents of Huntingdale, Kangaroo Valley Rd, The Grange, The Arbour and all ladies residing in the Berry area is to give Jan a ring to come check out our meetings on 44642181 before 12 noon on the Sunday before the third Wednesday of the month. The meeting is held at the Berry Bowling Club which on the third Wednesday night 6.30 for 7pm start. We have our guest speakers lined up for most of the year along with our Birthday night in August so plenty of interesting things to look forward to.

The Coffee Mornings on the 1st Thursday of the month, held at Just Delicious at 10.30 am, is also a good place to get to know the members. So, see you all at the April Meeting.

**Yolande, Publicity**

VIEW: Founded in 1960 by the General Secretary of The Smith Family, George Forbes, to support the charitable work of The Smith Family, VIEW stands for the Voice, Interests and Education of Women. It is one of Australia's leading women's volunteer organisations and support networks, and empowers women to have their voices heard on issues of importance for the future wellbeing of Australian society. Visit [www.view.org.au](http://www.view.org.au)

**Our Coffee Morning is on the first Thursday of the month at one of the local coffee shops.**

# bombo

blinds | curtains | shutters | awnings



## 4237 8280 [www.bombo.com.au](http://www.bombo.com.au)

Visit our beautiful showroom at **7 Johnson Street, Kiama Downs** (near the IGA)

WE CARRY THE FABULOUS "BLINDS BY PETER MEYER" RANGE • ALL PRODUCTS COMPLY TO CORD SAFETY LAWS

# BELLE PROPERTY BERRY

## From the Principal

"The market has cooled but it's not cold! With Christmas and the holiday period behind us, we're seeing buyers dust off the 'cobwebs' and make new forays into the area. Buyer enquiry is still strong but we feel a hesitation with the elections looming. Now's the time to think long and hard about your 'perfect' price and whether it is meeting the market conditions."

Would you like an obligation free appraisal of what your property could be worth on today's market? Give us a call on 02 4464 1636!

## Recently Sold

**\$570,000**

1/24 George Street, Berry

**\$890,000**

33 Scott Street, Shoalhaven Heads

**\$2,500,000**

60 Broughton Vale Road, Broughton Vale

**\$3,100,000**

120 Paringa Road, Longreach



**Jeff & Jo happy with their recent sale of 33 Scott Street, Shoalhaven Heads**

## Meet the family



**Gary Dale**  
Principal/ Licensee  
0418 211 917



**Nick Dale**  
Property Consultant  
0419 425 166



**Susan Dale**  
Office Manager



**Emily Agar**  
Property Consultant  
0458 420 581

**02 4464 1636**



# ADFAS AUSTRALIAN DECORATIVE & FINE ARTS SOCIETIES

Note change from previously advertised venue, for both Thursday evening and Friday morning  
- BERRY UNITING CHURCH HALL, ALBERT STREET

## THURSDAY 2 MAY, 7.30 PM LAURA KNIGHT: FROM NEWLYN TO NUREMBERG

Included in membership or \$25.00 at the door, a light supper with wine is served.

## FRIDAY 3 MAY, 10.00 AM

### AMERICANS ABROAD: JAMES McNEILL WHISTLER AND JOHN SINGER SARGENT and WOMEN ARTISTS: THEIR CHALLENGES, AMBITIONS AND ACHIEVEMENTS

Members \$35.00 or Visitors \$40.00, morning tea served between the lectures.

To book EFT payment to BSB: 082-435 ACC No: 50503 5938 and email shoalhaven@adf.as.org.au, notifying of your intention to attend.

In May ADFAS Shoalhaven's guest lecturer will be Bernard Allan, an independent art history tutor who specialises in the work of European women artists and American Art.

On Thursday evening Bernard will present Laura Knight: From Newlyn to Nuremberg. From a relatively humble background, Laura progressed to be one of Britain's best-known artists and the first female Royal Academician since the 18th century. Her joie de vivre surfaces in her art. She is known for her paintings of sunny beaches, the circus, gypsy encampments, ballet and theatre, and for her famous depiction of the Nuremberg Trials of 1946.

On Friday morning there will be two lectures. Americans Abroad: James McNeill Whistler and John Singer Sargent – two of the most successful American artists of the late 19th century. Whistler produced sophisticated etchings and oil paintings that bring Victorian London to life, whilst his Nocturnes evoke an atmosphere and mood; creating a new art form. Women Artists: Their Challenges, Ambitions and Achievements examines how the earliest practising female artists were confined to convents and little is known of their lives. Even in the 20th century, the obstacles facing female artists were many and significant. This lecture focuses on women whose passion for painting enabled them to surmount hurdles of the male-dominated art world.

[www.adfas.org.au/shoalhaven](http://www.adfas.org.au/shoalhaven)

Email: [shoalhaven@adf.as.org.au](mailto:shoalhaven@adf.as.org.au)



Illustration: Dame Laura Knight – Ruby Loftus Screwing a Beech Ring, 1943. Imperial War Museum, London



Thanks to the 17 volunteers who joined in to the Clean Up Australia Day effort for Berry Township site, especially to James Edwards (3) and his very big sister Sophia (5), who took the prizes for youngest volunteers on the day.

A beautiful day to be out in that Life, 'Be In It' state of mind.

We managed to fill ten decent bags of rubbish, three of recycling and a range of odds and sods – pipe, dumped hot water service, signs, chairs etc.

Overall though, what a wonderfully clean town it is that we are all so lucky to be living in.

## AUSTRALIAN RED CROSS BERRY BRANCH

the power of humanity



100 YEARS  
PEOPLE HELPING PEOPLE  
1914-2014

BECOMING A MEMBER  
OR VOLUNTEERING

If you wish to find out about becoming involved with or volunteering with the Red Cross contact the Berry Branch of the Red Cross (see Community Groups page of Town Crier for contact details), the Nowra Red Cross Office (1800 621 433) in Graham Street Nowra or go onto the Red Cross website.

The Berry Red Cross branch was very busy in March, collecting at the Berry Markets for the annual Red Cross Calling appeal, and those monies go to Red Cross general funds for emergencies and other appeals as and when they occur.

We also collected at Berry Public School on Election Day, and those funds will be donated to the local Save A Mate programme, which targets young people, youth workers and others who live or work with drug issues.

On 21 March we were fortunate to have a speaker from the Australian Red Cross Blood Bank, who gave a very informative talk about the great work of this very important service. The blood you donate can be made into 22 different medical treatments. Most people can donate blood, but some can't for health or lifestyle reasons. Information on becoming a blood donor can be found on the Australian Red Cross website.

Coming up in April will be our annual ANZAC biscuit stall, in Broughton Court on Wednesday 24th April, followed by our participation in the ANZAC parade on the 25th April.

Red Cross teams continue to support recovery operations in North Western Queensland and Tasmania, as well as responding to bushfires in New South Wales.

Your tax-deductible donation to Red Cross Disaster Relief and Recovery helps our teams to be there for Australians in an emergency. Please donate now at [redcross.org.au/disasters](http://redcross.org.au/disasters) or by calling 1800-RED-CROSS (733 276).



# YOUR STORAGE SOLUTION

## 3 MONTHS HALF PRICE

**All Internal Units - Call Now**  
**Individually Alarmed Units | 7 Days/Week Access**

### OPENING SPECIALS

- Packing Supplies
- Climate Control Wine Storage
- Commercial and Residential
- **FREE** move in trailer
- Solar Powered with TESLA Battery Storage

### NEW Trade Units Available

Customised to your lighting and power needs  
 Call now to secure yours today  
**FREE** Goods despatch and retrieval service

\*TERMS AND CONDITIONS APPLY



Phone our friendly team on 4422 1955  
 or visit our website [www.accessstorage.com.au](http://www.accessstorage.com.au)

**Access Storage - Cnr Meroo Rd and Victa Way Bomaderry**



# TRADES & SERVICES DIRECTORY

## Canine Cardio

Dog Walking & Animal Home Care

Dog Walking | Pet Minding | Doggy Daycare | Overnight Stays

Annette Brooker

0418 427 438

info@caninecardio-homework.com.au  
www.caninecardio-homework.com.au



## Television Antennas SHOALHAVEN ANTENNAS

Servicing Berry and surrounding areas.

- Digital Upgrades
- New Installs
- TV Tuning
- Repair existing systems
- Add Phone/TV Outlets



Ph: 0410 526 672 Paul 0424 243 005  
Fax: 02 4422 6672

WINDOW  
& GUTTER  
CLEANING  
HOUSE  
WASHING

CALL JAMIE  
FOR FREE  
QUOTE

0413 582 948



PROMPT, RELIABLE SERVICE



HIGH QUALITY, THERMALLY EFFICIENT BESPOKE HOMES.

www.illawarraprecasthomes.com.au

Phone: 0409 622 175

Builders' Lic. 183068c

## GETTIN' IT DONE! TREE SERVICES

TREE REMOVALS • TREE PRUNING  
BLOCK CLEARING • WHOLESALE MULCH  
STUMP GRINDING • CHERRY PICKER HIRE

JASON 0432 281 063  
WWW.GIDTREESERVICES.COM.AU



~ Specialising in gentle, low force techniques ~

SAFE, EFFECTIVE TREATMENT FOR:

- All ages; from babies through to the elderly.
- Headaches/migraines
- Back/neck pain
- Postural problems
- Whiplash
- Scoliosis
- EFTPOS available
- HICAPS now available

57 Queen Street • Phone: 4464 3414

TANNED HIDES, BERRY NSW

## TANNED HIDES

Professionally Tanned Hides available  
- your hide or choose from our range

PHONE 0409 444 081

All enquiries welcome  
www.tannedhides.com.au  
e: sales@tannedhides.com.au

Quality Laundry



Quality Linen

One Little Peg, Kangaroo Valley offers  
Laundry Services and Linen Hire  
at guaranteed competitive rates.

Pick up and delivery available.

Open Monday to Friday, 9am to 4pm

Laundry: 0408 111 PEG (0408 111 734)

Linen Rental Enquiry: 0402 746 927

Email: onelittlepeg@gmail.com

## AIS CERTIFIERS

FAST TRACK  
BUILDING APPROVALS

SWIMMING POOL  
COMPLIANCE CERTIFICATES

TONY LEWIS

0417 372 728 • 4421 0004  
info@accreditedinspectionsservices.com.au

## THE BOUTIQUE GYM

Personal Trainer Jen Miller

117 North Street,  
Berry NSW 2535

☎ 0413 648 943

jenmiller65@hotmail.com



LOCAL • COUNTRY • INTERSTATE

Experience a New Level of Professionalism

Phone 04 2864 3557 or 4464 3557

## Four Legged Friends PET FEEDING SERVICE

For Horses, Dogs, Cats, Birds  
& all other domestic pets

Megan White  
dip in animal care

0407 407 328

whitewolf99@bigpond.com

Established: 1995

• FEEDING • EXERCISING • RUGGING

• GARDEN • MAIL • GARBAGE

www.fourleggedfriends.com.au



All Creatures  
Mobile Vet



- Convenient pet health checks and vaccinations
- Compassionate euthanasia at home
- Complete range of Veterinary services
- Pick up and drop off service when your pet needs to visit our hospital
- No call out fee
- Emergency service available
- Service area from Albion Park to Milton NSW

Personalised Veterinary care at home

(02) 4464 1899 www.allcreaturesmobilevet.com.au

## Roof & Building Repairs

Roof Leaks

Leak Detection

Moisture Problems

0415 997 977

Info@benchmarkbuild.com.au

gerringong physiotherapy  
nowra central physiotherapy  
shell cove physiotherapy  
kiama physiotherapy

4234 4666

www.gerringongphysio.com

# TRADES & SERVICES DIRECTORY

## Vaughn's Lawn & Garden Service



- Local knowledge
- Professional service
- Fully insured

**0408 863 776**

[www.vaughnsgardening.com.au](http://www.vaughnsgardening.com.au)

## G.M. Ellison & Co. lawyers • conveyancers

**Graham Ellison LL.B.**

- Real Estate & Business Conveyancing
- Wills, Probate and Personal Arrangements

**5 HOST PLACE BERRY**  
Ph: 4464 3814 / 0408 444 808  
[graham@gmellisonlawyers.com.au](mailto:graham@gmellisonlawyers.com.au)

## TERMITES!

- ▼ Pre purchase termite inspections and reports
- ▼ Termite barriers new & existing buildings, council approved
- ▼ Thermal imaging and microwave inspection tools
- ▼ Termite Baiting Systems

**FREE QUOTES Call**  
**TERMITE SOLUTIONS-**  
**4448 5444**  
termite experts

Fully Licensed, Accredited & Insured  
Family Business with over 20 years experience

## PROPERTY MAINTENANCE HOME HANDYMAN

- Repairs and installation of doors/windows/gates and fencing
- Small extensions - decks/pergolas
- Tipper Hire
- Clean ups - rubbish removal
- 40 years' experience
- Fully licensed

**Michael Barrett 0408 217 637**

## BERRY MAINTENANCE PLUMBING

**ALL PLUMBING SERVICES**  
Gutters Hot Water Toilet Repairs Leaks

**Paul Bramley** Licence L5826

**Mobile: 0438 641 046**

Office: 02 4464 1312

## MY CERTIFIER

**BUILDING CERTIFICATION**

Construction Certificates, Complying Development Certificates, PCA Services, Pool Compliance, Basix Certificates, DA Assistance & Building Consultation

**Che Leonard BPB1812**

**0417 593 496**

**Email: [che@mycertifier.com.au](mailto:che@mycertifier.com.au)**  
[www.mycertifier.com.au](http://www.mycertifier.com.au)

*ease*  
Acupuncture + Chinese medicine

Digestive health  
Women's health  
Injury + Pain  
Stress + Anxiety

57 Queen St, Berry | 0487 858 394  
[www.ease-acupuncture.com](http://www.ease-acupuncture.com)

HERE IS HOW TO GET THE BEST KITCHEN,  
VANITY, FURNITURE, TIMBER WINDOWS,  
DOORS, FLYSCREENS AND JOINERY

## Rybrook Joinery

CALL SCOTT OR MICHAEL

**4422 4600**

## MICHAEL HILL PAINTER & DECORATOR

Quality Work Guaranteed

Domestic Commercial Industrial

ABN 95 969 204 488 Lic No 121389C

**0402474569**

- Specialising In
- New/Old work
  - Feature Walls
  - Roofs
  - Texture Coating
  - Heritage

*wholebody*  
PHYSIOTHERAPY  
...dedicated to your wellbeing

*Mary Pentecost*

84 Queen Street Berry NSW 2535  
email: [wbpqueen84@hotmail.com](mailto:wbpqueen84@hotmail.com)

**4464 2874**

## The Queen Family Cleaning Service

- ★ Domestic and Commercial Cleaning
- ★ Regular and Spring Cleaning
- ★ Presentation Cleaning
- ★ Rental Exit Cleaning
- ★ Window Cleaning

Call Rhona for a free quote: **0417 652 892**

**Over 20 years' Experience ...**

## ELECTRICAL CONTRACTOR

**EEPS**  
Lic. No. 133674C

### DOMESTIC & COMMERCIAL

Solar Power Installation  
Home Automation Systems  
Security Lighting  
Pools & Spas  
Hot Water Systems  
Oven & Stove Repairs  
Safety Switches  
Smoke Detectors

Contact peter today!

**0412 594 907 | 4464 1993**

ENDEAVOUR ENERGY AUTHORISED LEVEL 2 SERVICE PROVIDER

**JET LOCKSMITHS & SECURITY**

**Automotive Commercial Residential Industrial**

**MOBILE 24/7 LOCKSMITH SERVICE**  
**0498 770 088**

[www.jetlocksmiths.com.au](http://www.jetlocksmiths.com.au)

Master Locksmith | Security Lic #000101098

## Gerrong Painting Service

Lic: 186465C

- New & Repaints
- Interior & Exterior
- Small Jobs Welcome
- 30 Years Trades Experience



**GREG DENT 0438 637 141**



## MISS SPARKLES SHOALHAVEN

External House Cleaning

**HOUSES FROM \$148**

- ★ Environmentally Friendly
- ★ House/Driveway Packages
- ★ Removal of Cobwebs
- ★ Patios and Driveways
- ★ Mildew Treatment
- ★ Windows/Screens included
- ★ Commercial work
- ★ Seniors Discount

Phone Dennis for a free quote:  
**0407 642 256**

Now Offering: Internal Window Cleaning &  
Licensed/Insured Electrical Work (Lic No. 209514C)



# TRADES & SERVICES DIRECTORY

## CKB CIVIL

All Earthworks  
Landscaping  
Driveways  
Rural Roads

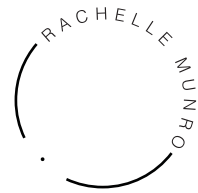


Charlie 0418 429 740  
charlie@ckbcivil.com.au Lic 244729c

## Mountain Echo Landscape & Horticulture

- Landscape Design & Construction
- All Aspects of Garden Maintenance
- Fruit & Veg Production
- Broad Acre Property Management

Katie 0424 236 235 Ryan 0409 743 828  
contact@mountainecho.com.au



YOUR *mindful* TRAINER  
· personal training · yoga  
· meditation · health coaching

0406 727 680  
rachellemunro@rachellemunro.com



TECHNOLOGY SOLVED

- Residential or Business we come to you.
- Hardware and software repairs and sales.
- Networking solutions.
- Over 20 years' experience.

0422 227 456  
www.ctsnowra.com.au

LOCAL SERVICE – GLOBAL STRENGTH



— YOUR HOME IS IN GOOD HANDS —  
Maintenance, Repair & Renovation Specialist

"I can help with those odd little jobs that never seem to get fixed or a bigger project like a new kitchen or bathroom"

Lic # 218008C

For a friendly free quote - Glynn 0423 384 072



Local Plumber  
Fast & Reliable 24/7

1300 792 082

www.curranplumbing.com.au

10%  
OFF  
IF YOU  
MENTION  
THIS AD



ESTABLISHED  
IN THE AREA  
FOR 10 YEARS

- STRUCTURAL LANDSCAPE
- SOFT LANDSCAPE
- GARDEN MAINTENANCE
- LAWNS & HEDGING
- ALL THINGS LANDSCAPE
- QUALIFIED HORTICULTURIST

• CONSULT • DESIGN • CONSTRUCT • MAINTAIN  
www.bnlandscapes.com.au

0402 255 115

## MARK FOX TILING

- Floor Screeds • Waterproofing
- All interior and exterior wall and floor tiling

Pool water lines and complete pools

With over 25 years' experience  
in the construction industry  
I have the solution to all your tiling needs.

Call 0481 297 087  
FOR YOUR FREE QUOTE TODAY  
Licence No 304070C

## Arborist

Complete Tree Removal & Care  
Reliable Professional Service

Mulch Sales  
Stump Grinding  
Fully Insured

Dave Kelly  
0423 903 946

All aspects of professional tree care.



## WALLED GARDENS

Kangaroo Valley Berry Bowral Wildes Meadow

garden maintenance  
garden design  
installation

Joshua Wall  
02 8999 1408  
04 2357 8716

hello@walledgardens.com.au

www.walledgardens.com.au



SOUTH COAST  
COLOUR  
of Berry

Colour Consultancy

Interior Decoration

Luxury Lighting

Asha Ardill 0423 820 370 asha@southcoastcolour.com.au  
www.southcoastcolour.com.au

## rural bitumen services pty ltd

Specializing in Private Road Construction  
& Bitumen Seal

- Driveways
- Carparks
- Decorative driveways
- Fully Insured

Contact Office (02) 4464 1555

James 0416 269 744



CHRIS MANN 0431 671 475  
mmbuildingandconstruction@gmail.com

NEW HOMES | RENOVATIONS | EXTENSIONS | DECKS-PERGOLAS | CONCRETING

ABN 40 624 149 506 LIC. NO. 292587C

## Barrys Mowing & Maintenance Service



RESIDENTIAL & SMALL ACRES | BERRY & SURROUNDS

Fully Insured | Call for a Free Quote

0409 929 534

## South Coast Gutter Wiz

GUTTERS BLOCKED?

Our safe, affordable & mess-free vacuum gutter cleaning service is now available in your area! Keep your home free from debris & bushfire safe. Pressure Cleaning service also available.

Call for a free quote today....

Your vacuum gutter cleaning expert  
Phone Garry 0401 492 220







140 Queen St  
Berry Ph:4464 2995  
[www.berrybowling.com.au](http://www.berrybowling.com.au)  
f : Berry Bowling Club

*Easter  
Seafood  
Raffle*

15 X Seafood Trays  
10 X Chocolate Prizes  
5 X Club Vouchers  
Total \$600

Drawn 7.30 Good Friday  
19<sup>th</sup> April

**BOOK YOUR OWN  
BAREFOOT BOWLS PARTY  
BOOK YOUR WORK  
BAREFOOT BOWLS PARTY**

- Cost \$10 per person which includes bowls hire coaching and set up
- Both BBQ's can be hired for self-catering



See the bar to make  
a reservation or  
Ph:4464 2995



Berry Bowling Club

**CHINESE**  
RESTAURANT



**raffles!**

Every Thursday, Friday, Saturday & Sunday

Drawn Thursday 7.15 Fri, Sat, Sun at 7.30

Free Trivia on Sunday

See Bar Staff For Details

Lunch & Dinner - Wednesday to Sunday Ph 4464 2388

**BERRY BOWLING CLUB MARKETS**

GUARANTEED TO PUT A SMILE ON YOUR DIAL!  
EXCITING AND UNIQUE PRODUCTS ARE SELLING AND  
WE PROMISE YOU WILL NOT BE DISAPPOINTED!

**2nd Sunday Every Month 8am - 2pm**