

Keeping Berry Informed



BERRY TOWN CRIER

PO BOX 202 BERRY NSW 2535

WWW.BERRYALLIANCE.ORG.AU

 FIND US ON FACEBOOK

DECEMBER 2018 PRICE: \$3.00

Page 11

**BERRY
PRESCHOOL'S
WRAP UP FOR
THE YEAR**

Page 24

**BERRY BOWLING CLUB
ARE LOOKING FOR NEW
MEMBERS. COULD THAT
BE YOU?**

**ROTARY'S
NYE
FIREWORKS**

Page 3

**CAROLS
IN THE
PARK**

Page 7

**SHOWCASE YOUR
SPECIAL TALENTS IN
THE 2019
BERRY SHOW**

Page 5

**PLANT
PROPAGATION -
IDENTIFYING
NATIVE SPECIES**

Page 9

Page 25

**VOLUNTEER
WITH THE
RURAL FIRE
BRIGADE**

Thank You

Thank you to our readers, dedicated community groups
and advertisers from the Berry Alliance.

WE'LL BE BACK IN FEBRUARY 2019

CUT-OFF DATES FOR 2019 ON PAGE 2

BERRY ALLIANCE INFORMATION



The Town Crier is produced by the Berry Alliance, Inc.

The purpose of this publication is to communicate to the people of Berry about community activities and to generate a small income for the Berry Alliance to cover administrative costs and donations.

MEMBERSHIP

Membership of the Berry Alliance costs \$10 pa. It aims to share information amongst community groups and individuals, and to ensure that Berry continues to be a community we are proud of.

Membership is open to Berry community groups and individuals.

To join the Berry Alliance, write to
PO Box 202 Berry NSW 2535

ALL BERRY ALLIANCE ENQUIRIES

Secretary: 0449 569 059

Email: towncrier@berryalliance.org.au
Post Office Box 202
Berry NSW 2535

Editor's Note



The closing date for our February issue will be Wednesday 9th January 2019 at 5pm. Please submit prior to this date if it is your first submission. Material can be submitted via e-mail to:

towncrier@berryalliance.org.au
Phone 0428 037 572

Town Criers can be downloaded for free from www.berryalliance.org.au or our Facebook Page: Berry Town Crier.

Nancy Davies - Berry Town Crier

TOWN CRIER EDITORIAL BOARD

Nancy Davies Rick Gainford
Holly Landgren Adrian Bishop

Contributors are those from the Berry community who have news or views relating to residents of the area. The opinions expressed in the Town Crier are not necessarily those of the Berry Alliance or the Editor. The Town Crier is published every month, with a circulation of 2400.

PRINTED BY **Berry Printers**
CONCORDE WAY BOMADERRY PH: 4422 3774

PRINTED ON RECYCLED PAPER



TOWN CRIER CLOSE OFF DATES

TOWN CRIER CLOSE OFF DATE FOR ADVERTISING AND COMMUNITY GROUP ARTICLES. 5PM DEADLINE	DELIVERY WEEK OF TOWN CRIER
FEBRUARY - 9/1/19	19/2/19
MARCH - 13/2/19	23/2/19
APRIL - 13/3/19	23/3/19
MAY - 17/4/19	27/4/19
JUNE - 15/5/19	25/5/19
JULY - 19/6/19	29/6/19
AUGUST - 17/7/19	27/7/19
SEPTEMBER - 21/8/19	31/8/19
OCTOBER - 18/9/19	28/9/19
NOVEMBER - 16/10/19	26/10/19
DECEMBER - 20/11/19	30/11/19



Slow Food® Berry to JB

As an active Convivium we hold a wide variety of events, including workshops, cooking classes, restaurant visits and cocktail functions. We are currently planning the Calendar for 2019 so if you have suggestions, we would love to hear from you.

Our joint Convivium leaders Jenny and Marilyn attended a successful leadership weekend hosted by the Blue Mountains branch of Slow Food in October. Food for Change was a major topic for discussion as we are realising that food production is a major contributor to Climate Change. November has been the month of trying to either:

- Eat locally grown food for a week
- Eat only plant-based food for a week
- Have a zero-waste week

SF Members attended a working bee @ the TAFE Kitchen Garden in Nowra. The kitchen garden is an important part of the cooking school. New seedlings were planted, and garden maintenance was given a helping hand by participants. This is an ongoing commitment to encourage TAFE students to prepare food from the garden.

Our Long Lunch Greek Style was enjoyed by 38 members at The Mortons in Longreach. A local free-range lamb was spit roasted to perfection by Pam Johnston and served with a wide variety of delicious vegetarian dishes...A perfect day

Each year on December 10, Slow Food convivia all around the world celebrate local eating, agricultural biodiversity and sustainable food production. Celebrations take shape with hundreds of events ranging from collective meals, fundraisers, community festivals, protests, workshops for children, excursions to producers, and much more. It's our way of demonstrating diversity and Slow Food's philosophy of good, clean and fair food to communities, the media and decision makers.

Slow Food Berry to JB celebrates this year with Slow Food Saddleback, Slow Food Far South Coast and Slow Food Canberra at the wonderful Mona in Braidwood.

If you would like more information, please contact
Jenny Crosby 0424 615 948 or Marilyn O'Dowd 0416 018 977
or email slowfoodberry2jb@gmail.com

www.berryalliance.org.au

DECEMBER 2018

Rotary Club of Berry



New Years Eve Fireworks Spectacular On Again

The New Years Eve Fireworks Spectacular and Family Fun Night staged by the Rotary Club of Berry is on again at Berry Showground - a new look event with even more activities this year, with the gates opening at 5pm.

30 lucky children will even win one of the tickets entitling them to free unlimited rides on the carnival rides all night long! How good is that – but you'll need to be there early to be in with a chance.

There are also free, good old-fashioned games for the children to play, like horse shoe throwing, knock down the cans, sack races and more. Entertainment throughout the night is by The Rock Addicts plus children's favourite - Pirate Pete. And, ShowMow Racing will stage their super exciting ride-on lawn mower racing.

At 9pm the magnificent fireworks spectacular lights up the night skies – you need to be there to experience the thrill of sitting right underneath them - few other fireworks displays are as exciting as this. After the fireworks the night will rock on for those wishing to give the carnival rides a further workout.

Families are encouraged to bring a rug and make a real picnic night of it. This is an alcohol-free event with proceeds going towards the Rotary Club's fundraising for a Nature Play Parkland in Berry, plus its many other community activities. Entry is \$5.00 per person with children under 15 years free.



RURAL SCHOLARSHIP OPEN

Applications are now open for the Dr Artis Medenis Rural Education Scholarship which is aimed at strengthening the agricultural industry in the region.

Eligible candidates must be actively engaged in the operation of a dairy or other farming pursuit in the Shoalhaven or the Illawarra. You can be of any age and enrolled, or planning to enrol, in any agricultural or farming related course. The Scholarship is also available to assist with costs of attending conferences or seminars in Australia or overseas.

If interested, please send an application to:

Dr. Artis Medenis Rural Education Trust Fund and Scholarship
Rotary Club of Berry, Inc. P.O. Box 81, Berry NSW 2535

Dr Artis Medenis OAM provided outstanding veterinary service to the local dairy industry and the wider Illawarra community for over 50 years, and was a member of the Rotary Club of Berry. On his 85th birthday he commenced an endowment to establish the Rural Education Scholarship Fund held in trust by the Rotary Club. He continued to add to the Fund on subsequent birthdays until his passing in 2015, aged 94 years.

Berry & District Garden Club News



SECRETARY MARY SEELIS 4464 1191 VISIT US ON www.berrygardens.org.au

November is almost done and so too is the Berry & District Garden Club year, with a final social gathering on the 27 November. The Club will be in recess until February, 2019, a well-earned break after the "busy-ness" of the October Berry Gardens Festival. The Festival is not really over until November, however, when garden owners and sponsors are thanked again, the voluntary efforts of members are recognised and presentations of donations to nominated local, not-for-profit organisations are made at the November club meeting. This year there is \$40,000 from gate takings to be distributed between 11 groups, a result that gratifies both

recipients and club members. In addition, sales from the Club's festival plant stall of \$8,000 will be put towards the Club's continued development of the George Street site into a community asset.

It is now 11 months since the Garden Club was allowed access to RMS residual land at the bottom of George Street to begin transforming what had been wasteland into an attractive, open park in the heart of Berry. What has been achieved in this time by volunteers and supporters has been remarkable! The bare dirt of recontouring is being quickly covered by buffalo grass, a dry creek bed is a reminder of the severed Town Creek, a low stone bridge adds charm

to a curving path that links Albert and George Streets with the RMS shared pathway and fencing defines the entry, replacing the deep wash-away that had been there.

We would like to thank the community for your interest and support for the many Garden Club activities throughout the year and to wish you all a Merry Christmas. The next club meeting will be held on Tuesday 19 February 2019 at 7.30pm in St Luke's Church, Princess Street. To find out more about our club, please contact our secretary, Mary Seelis, on 44 641191 or visit us on www.berrygardens.org.au.



One Little Peg Quality Laundry and Linen

Great news!

Your local friendly laundry is now servicing Berry!

For good old fashioned service with a smile,
come down and see us at 2 Jenanter Drive, Kangaroo Valley
for all your laundry needs.

Pickup and delivery available*.

Prefer to rent your linen?
We are excited to offer our customers this convenient
service from December.

Call and register your interest now.

Open Monday to Friday, 9am to 4pm.

* Terms and conditions apply. Contact us for details.

Email: onelittlepeg@gmail.com

Phone: 0408 111 PEG
(0408 111 734)



Shoalhaven Growth - What's Your View?

Do you want to see further development to the south of Huntingdale? Council is seeking community feedback on its draft Growth Management Strategy (GMS) and has provided the following four growth options in its Discussion Paper:

1. Modified GMS Version 1 - Council would only consider rezoning additional rural zoned land for residential development in Nowra/Bomaderry, St Georges Basin, Milton/Ulladulla, Kangaroo Valley, Berry, Wandadian and Fishermans Paradise.
2. Northern Centric - Growth of Nowra-Bomaderry would continue to be the priority. Work on the release of the urban release areas such as Moss Vale Road North and South would continue, and investigations would be undertaken to determine suitable areas at Meroo Meadow and Bamarang.
3. Growth Centres - Nowra-Bomaderry - Continue to focus on the urban release areas and long term investigation areas, as well in infill development close to centres. Jervis Bay / St Georges Basin-Review may result in identification of more land for residential development. Milton-Ulladulla-Review may result in the identification of new areas for residential development.
4. Consolidate Growth - Focus on larger settlements that already have services in place to accommodate increased development, including Nowra, Bomaderry, North Nowra, Huskisson, Vincentia, St Georges Basin, Sanctuary Point, Ulladulla and Mollymook. Also, potential for increased densities in some smaller settlements such as Berry, Shoalhaven Heads, Culburra Beach, Callala Bay, and Milton

Huntingdale Estate will contain around 300 dwellings when completed, and the approved Planning Proposal for land south of Huntingdale would add another 150. This total of 450 new dwellings compares to around 480 existing

dwellings in the town (from North St. to the railway in the south, and from the Highway to the west and Pullman St to the east).

Growth Option 1 above would extend the area available for major development as far south as Schofields Lane leading to potential construction of an additional 200 dwellings.

Draft Shoalhaven GMS Discussion Paper

The GMS will set the strategic direction for Shoalhaven for the next 20 years and recommend planning changes and other actions to be specifically investigated or considered. It will help determine:

- How and where new housing is provided;
- How best to protect environmentally sensitive land from inappropriate development;
- How best to adapt to a changing environment;
- How best to improve the health, lifestyles and prosperity of all residents; and
- Priorities for infrastructure renewal and business investment.

Draft Character Assessment Report

Consultants have prepared assessments identifying the existing and desired future character for Shoalhaven's existing settlements. They form an integral part of informing the GMS process and could be used to inform locality specific considerations for development, such as LEP or DCP controls.

Your View

You can let Council know your views on its growth options via an online survey and its Character Assessment Report via its feedback form (see links on Forum website). You can also discuss the Draft GMS face-to-face with Council staff at a drop-in style community session from 3.30pm to 6.30pm at the Berry School of Arts on Thursday 29 November.

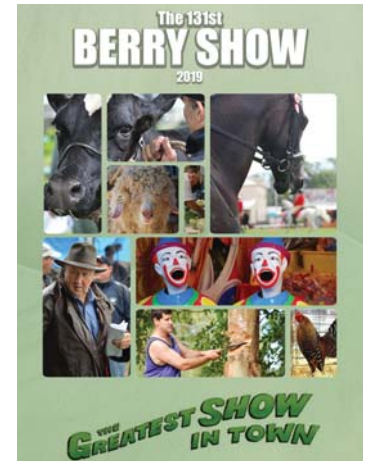
Next Forum Meeting is on 13 December 7.30pm at the School of Arts. ** Christmas Drinks & Nibbles beforehand from 6.45pm **

Berry Show Society's Committee

Invite you all to our town's agricultural show on the

1ST AND 2ND FEBRUARY 2019

We had a record gate in 2018 & hope to better the attendance numbers next year.



The schedule is available now from many of the local businesses, from the Show Office or online from our website - so start knitting, stitching, baking or grooming your pet.

Save the date for the Showgirl Ball 19th January, 2019. This social event is the final round of judging for entrants. Tickets available after Christmas.

Show membership is available to any Berry & district resident. Membership is effective June to June each year. The names of the financial members appear the Show Schedule. Members are awarded a reduced entry to the show and voting rights at the AGM in May.

seed

ORGANIC
FACIALIST

New organic beauty space located upstairs within the "Wilson Stores" building offering a range of certified organic and results driven facial treatments including Dermalux LED + microhydrabrasion, manicures and pedicures in a beautiful private room.

GIFT CERTIFICATES AVAILABLE | Appointment only with Alexandra Strong.
Book online or call to make a booking.

0428 456 018 | www.seedorganicfacialist.com | Shop 7 97-99 Queen Street, Berry

**YOUR
TAXIS
ARE BACK
SEVEN DAYS**

4464 3181

BERRY SHOALHAVEN HEADS TAXIS
NEW OWNERS - COMMENCE 26 DECEMBER 2018

Please join us for a great night to celebrate the opening
of the Berry Show and meet our Showgirl Ambassadors
for 2019

A community Event for the Community

BERRY GALA SHOWGIRL BALL

Berry Showground Pavilion Saturday 19.01.19

6.30pm BYO: drinks Dress: Formal/lounge suit

TICKETS: \$70pp <https://www.trybooking.com/YZWJ>

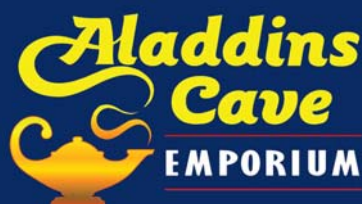
Book a Table Everyone Welcome

Fully Air Conditioned Catering: Salmon & co

for further information contact Therese: evertpt@bigpond.com



After 18 years in Berry, Aladdins Cave / Bus Stop Furniture **HAS RELOCATED TO SOUTH NOWRA**



**HUGE SELECTION OF ANTIQUE, VINTAGE,
UPCYCLED AND PERIOD STYLE UNIQUE FURNITURE -
THE BIGGEST ON THE SOUTH COAST**

The same eclectic mix of wonderful furniture
pieces that we have always been renowned for.

GREAT PRICES, GREAT QUALITY ITEMS.

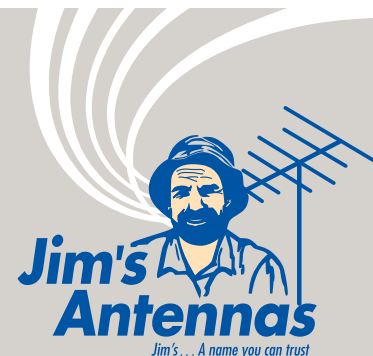
Pay Us a Visit. Its Worth the Drive to 17 Investigator St, South Nowra
Open 7 Days 9.30am-5pm

**DON'T PAY NEW PRICES, UNTIL YOU'VE VISITED US FIRST:
DOUBLE THE QUALITY; HALF THE PRICE.**

Aladdins Cave EMPORIUM

0403 272 543 E: aladdinscaveemporium@gmail.com

"You Never Know What You'll Find"



Joshua Broad
Jim's Antennas

Joshua Broad is your new Jim's Antennas Digital TV Specialist servicing the Berry, Nowra & greater Shoalhaven area.

Joshua joined Jim's Antennas mid this year after a tree change bought him to the Berry Area.

After working for many years in the Enterprise I.T. and I.T. Security for large organisations in Sydney Joshua and his family – wife and 3 beautiful daughters were looking for a change of scenery and a more relaxed lifestyle which would allow all of them to spend time outdoors. Joshua's wife's family have been living in the Shoalhaven area for many years and they are enjoying being closer to family. Having been involved in marine rescue along with being active with his daughter's community organisations and schools, Josh is looking forward to getting out amongst the community and meeting everyone.

Joshua loves giving his customers the best outcome and solutions for their needs and budget and states that with the Shoalhaven area being predominantly rural, free-to-air TV and mobile services often require additional equipment to receive these services. Joshua is happy to work with clients to create great solutions for their home or business.

If you'd like Joshua to provide you with a FREE Onsite NO Obligation quote for any of our services, including TV Wall Mounting, Phone/Data/TV Points or to improve your wifi capabilities give him a call today on 131 546 or check out our website www.jimsantennas.com.au to see what other services we can assist with.

BERRY CWA

Last month a number of our members attended a talk by local well-known local historian June Robson at the Berry Historical Society on the history of our CWA Hall. The hall has local heritage significance – the building originally being built about 1860 in Pulman Street and used as a school until 1885 when the new school opened. The Berry Bowling Club purchased it in 1915 for use as a club house and moved it in sections by bullock and dray to its present site. In 1963 the Berry Branch of the CWA purchased the old club house and

bowling green when the Bowling Club moved to their new property and this old building has been our home ever since.

We are looking forward to a talk again this year by contestants in the 2019 Berry Show Girl competition at our December Meeting at 1pm on Friday 14th December at our rooms at 79 Victoria Street, followed by afternoon tea. Any members of the community interested in the Country Women's Association of NSW are invited to attend - we would be delighted to see you.

Looking ahead to next year, we will again be hosting our Australia Day Trivia competition.

This free, fun quiz will be held in our rooms on Australia Day, Saturday the 26th January, 2019, commencing at 9am with the raising of the flag and morning tea followed by the Trivia competition. All are invited so do save the date in your diary.

Compliments of the season to all from the Berry Branch of the CWA of NSW.

Sandra Berner - Publicity

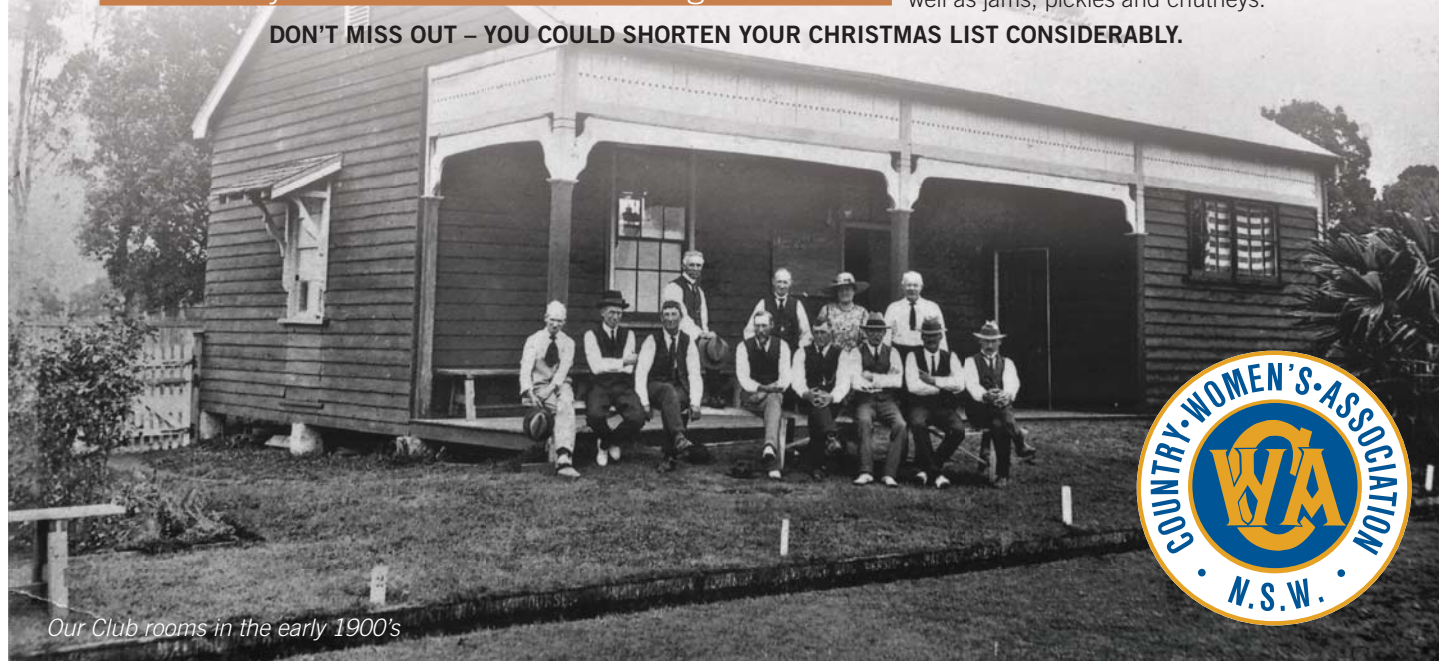
It's that time of year again the Berry CWA

will hold its Christmas Street Stall in Broughton Walk

on Saturday 8th December commencing 9am.

Of course all the usual handmade gorgeous gifts will be there for babies through to grandparents together with our homemade freshly baked cakes, slices and biscuits as well as jams, pickles and chutneys.

DON'T MISS OUT – YOU COULD SHORTEN YOUR CHRISTMAS LIST CONSIDERABLY.



Our Club rooms in the early 1900's



Join us at the following Christmas celebrations:

ST. LUKE'S ANGLICAN CHURCH, Princess St.
CHRISTMAS EVE 11PM HOLY COMMUNION
CHRISTMAS DAY 8AM HOLY COMMUNION
9:30AM FAMILY SERVICE

BERRY UNITING CHURCH, Albert St.
CHRISTMAS DAY 9:30AM CHRISTMAS SERVICE

SCOTS' PRESBYTERIAN CHURCH, Victoria St.
CHRISTMAS DAY 9AM CHRISTMAS SERVICE

ST. PATRICK'S CATHOLIC CHURCH, Albert St.
CHRISTMAS EVE 9PM CHRISTMAS VIGIL
CHRISTMAS DAY 8AM CHRISTMAS MASS

BERRY COMMUNITY CHURCH, Schofields Ln.
CHRISTMAS DAY 9AM CHRISTMAS SERVICE
10AM CHRISTMAS SERVICE

CAROLS IN THE PARK

DEC 24, 7PM-8:15PM, BERRY APEX PARK

*Come, bring a chair or rug and
celebrate Christmas with the people of Berry.
The Kingship of Jesus is cause for joy.*

for inclement weather, alternative venue is the Berry School of Arts

New homes in Shoalhaven Heads from **\$285,000***



Benefits of living at Coastal Palms:

- ♦ On-site management
- ♦ No body corporate fees
- ♦ No stamp duty
- ♦ Wonderful facilities

Architecturally designed homes include:

- ♦ 2 bedrooms (1 x Queen, 1 x Double)
- ♦ Air conditioning to living & dining
- ♦ Open plan kitchen
- ♦ Entertaining deck

Call **02 4448 7206**
to book an inspection

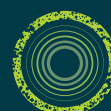
For more information, visit
coastalpalms.com.au

*Price is based on owning your own home and leasing land for a weekly site fee. Furniture not included.

**32-40 Shoalhaven Heads Road,
SHOALHAVEN HEADS NSW 2535**



A place for family and friends



COASTAL PALMS
AN ALLSWELL COMMUNITY



Plant Identification - a Sensory Experience

It is sometimes difficult to identify native plants that are unfamiliar to us, but just as we learned to identify a rose from a geranium, we can do the same with local native plants. Although looking at books with coloured pictures of plants as a method of identifying plants is pleasurable, it can be unreliable and often leads to wrong conclusions.

- A useful method to learn to identify plants is to learn the **names** and **characteristics of plant families**. Related plants share similar characteristics.

The volunteers spent some time with the children looking at the similarities of plants growing in the Tree Orchard from the **Fabaceae family**, - *Indigofera australis*, *Goodia lotifolia* and *Hardenbergia violaceae*. We are now waiting for their pods to ripen to collect and process their seeds.

- **'Keying Out'** is another common way to identify plants by looking at the physical appearance of parts of a plant and using a process of elimination as a guide to identifying a plant.
- The volunteers and children have been looking at a third way to identify plants by using most of our senses - the visual and tactile observation of bark, flowers, fruit, variations of leaf shape and size, and from the aromatic smell of flowers and crushed leaves and from the sound of the foliage as the wind passes over the leaves.

We are very fortunate to have mature local native trees in the school playground and the

children are learning to identify - species of *Melaleuca* (Paper barks), Old Man Banksia (*Banksia serrata*), Sandpaper fig (*Ficus coronata*), Illawarra Flame (*Brachychiton acerifolia*), Turpentine (*Syncarpia glomulifera*) and Red cedar (*Toona ciliata*). We have also talked about the benefits of growing the next generation of these tree species in our area.

Having touched the bark of a Red cedar, observed the new pink growth of the compound leaves forming in spring, seen and smelt the tiny flowers raining down in the playground, the time is right to enjoy the shade provided by the broad canopy throughout the summer months.

By looking up occasionally in a month or so, the fruits (seed pods) will form and we can anticipate the release of seeds early next year.

This sensory identification experience will not be forgotten.

THANK YOU

The community has always shown such good will and support towards the BPS Plant Propagation Nursery program.

The volunteers wish to acknowledge the generous financial donation made by Berry and District Garden Club from the proceeds of this year's Garden Festival. It is very much appreciated. The donation will be directed towards the development of the 'hardening off' area for the new nursery.



Many thanks to all our great speakers throughout the year. Also, many thanks to those who have come along and listened and supported our Coffee and Friends group. It's been great meeting new friends and getting to know people. We are already planning for next year and looking forward to returning in February 2019.

Thank you to Nancy and the Town Crier team for their help throughout the year. Wishing everyone a wonderful Christmas. Take time to enjoy and value family and friends.

See you in the New Year!

BERRY COMMUNITY LIBRARY

The last Community Library day for 2018 will be Wednesday 19th December so come along and stock up for your holiday reading. We will reopen on Wednesday 16th January 2019.

We've had an amazing year and thanks must go to our great volunteer team who play such a vital part in keeping the Library up and running.

» LIBRARY OPENING HOURS

Monday and Wednesday 1-4pm

Tuesday, Thursday and

Friday 10-1pm

77 ALBERT STREET,

OPPOSITE THE

IGA CARPARK,

BEHIND THE UNITING CHURCH.

FOR MORE INFORMATION CONTACT
JANET ON 0425 220 258

FIND US ON FACEBOOK 

THE BERRY COOL ESTATE



TURN AT THE FIRE ENGINE & T - REX

16 COOLANGATTA ROAD - BERRY / COOLANGATTA NSW 2535



BERRY COOL NURSERY

RETAIL NURSERY AND PRODUCTS

PRE-LOVED - VINTAGE - RETRO WARES AND GIFTS

CALL KIMMY - 0491 488 355

THE LAZY GARDENER TOO

LANDSCAPE SUPPLIES

SOIL - COMPOST - PEBBLES - STONES - ASSORTED MULCH

CALL GLYN - 444 88 355

CAFE

COUNTRY STYLE COOKING - CAKES - TREATS

HOME MADE ICE CREAMS - COFFEE & DEVONSHIRE TEA

CALL CHRISSY - 0455 876 064

BERRY COOL MARKETS

2ND SATURDAY OF EVERY MONTH 9am till 3pm

VARIETY MARKET STALLS AND FOOD VANS

CALL KIMMY - 0491 488 355

BERRY COOL EVENTS & STORAGE FACILITIES

SPECIAL EVENTS AND FUNCTIONS & YARD AND SHED STORAGE

CALL KIMMY - 0491 488 355



SCOTS' PRESBYTERIAN

CHURCH, BERRY

All Welcome!!!

Service Time: Sunday 10am

Sunday School: Sunday 10am

Minister Rev Isaac Jung - 4464 1020

Cnr Alexandra Street & Victoria Street
Berry

Our purpose is to
Love God with our heart, soul, mind and might
and to
Love our neighbour as ourselves.

Ordinary people worshipping an
extraordinary God

www.berrypresbyterian church.net.au

belle PROPERTY

Welcome to our office

With our office perfectly located as you enter the beautiful township in an elegantly restored heritage building, Belle Property Berry is primed to offer the local and nearby communities a real estate experience which other companies often aspire to but rarely achieve. One of the most experienced real estate teams on the South Coast is focused on bringing sellers and buyers together with an absolute commitment to exceptional customer service, professionalism, integrity and of course results!

Quality service begins with courtesy and respect, backed up with enthusiasm, a desire to support and help and a determination to ensure the job is done properly. Clear, open communication is essential in bringing the right properties and buyers together. Our team at Belle Property Berry take the time to understand what is important to their clients and make sure they are informed every step of the way. Time and time again, this has proven to be the difference between 'for sale' and 'sold'.

Gary Dale

Principal/ Licensee

0418 211 917

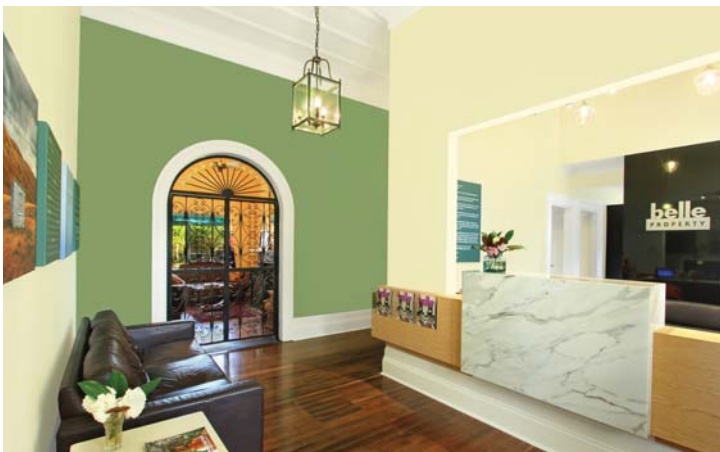
gary.dale@belleproperty.com

Nick Dale

Senior Property Consultant

0419 425 166

nicholas.dale@belleproperty.com



- 4464 1636 -
122 Queen Street, Berry

We can't believe that another school year is coming to a close. It's been a busy term at Berry Preschool and there is so much to still look forward to.

On a fund-raising note, our cake stall, held at Broughton Court to coincide with the Berry Garden Festival, was a big success. Parents were able to show off their culinary and baking expertise and several preschool children helped mums to run the stall. It is safe to say that there were some impressive sales skills on show from our 4 and 5-year olds!

November has seen the school pay a visit to the Berry Masonic Village, to meet with the residents and have morning tea. Our children gave the residents a demonstration of what they have been learning this year in their Zumba class! Thank you to the Village for having us and for donating a \$100 book voucher. It is much appreciated. The same visit revealed the winner of their Christmas card competition which all of our children

had entered. Congratulations goes to Beth Goodger who not only won a \$50 book voucher, she also had her winning design made into Christmas cards.

Our regular zoo visits continue to go ahead with the children getting up close and personal with Australian Wildlife.

Looking ahead, there are lots of exciting things on the horizon. The children are looking forward to their kindy orientation and visits to the Berry Public School. We have our Christmas party and graduation on the 16th December at the Berry Showground. Plans for this are coming along well with a bouncy castle and petting zoo booked. The children are also practicing madly in preparation to showcase what they have learnt in their music classes this year.

Berry Community Preschool



The end of the school year is fast upon us, so we would like to take this opportunity to say farewell to our graduates who will attend big school next year and to wish them and their families the best of luck for the future.

Berry Butchery

Celebrate **ORDER NOW FOR Christmas**

*GET IN EARLY TO AVOID DISAPPOINTMENT!

TRADITIONALLY SMOKED LEG HAM
 ROASTING LEGS OF PORK
 ROLLED PORK LOINS
 ROLLED SEASONED PORK FOREQUARTER ROASTS
 FRESH CHICKEN
 FROZEN TURKEY
 FRESH TURKEY/FRESH DUCK
 ROLLED SEASONED TURKEY BREAST
 TURKEY BUFFET

ALL HAMS ARE CURED, COOKED AND SMOKED IN THE SHOP the traditional way!

129 QUEEN STREET BERRY PH: 4464 1063
 EMAIL: berrymbutchery@live.com FOLLOW US ON: [f @berrymbutchers](https://www.facebook.com/berrymbutchers)

ADVERTISEMENT

Gareth Ward

Member for Kiama

"Working for Berry"

Can I help you?

P 4232 1082 | **F** 4232 3577
E kiama@parliament.nsw.gov.au
W www.garethward.net.au
A 102 Terralong Street, Kiama NSW 2533.

Authorised by Gareth Ward MP, 102 Terralong Street, Kiama NSW 2533.
 This advertisement was produced using parliamentary entitlements.



BERRY MEN'S SHED

ANNUAL GARAGE SALE HUGE SUCCESS



The annual Garage sale held in November raised a record amount which will be used for a variety of projects over the next 12 months. "The quantity and quality of items on sale were of a higher standard than last year" said Shed President Phil Reid. We would like to thank all members of the Shed who were involved in making items for sale, setting up on the day and putting things away. The Garage sale is our main fund raiser and is fast becoming a major event in Berry and once again it will be held next year on the same day, the first Saturday in November. Money raised from the Garage sale will go towards ongoing maintenance and purchase of new equipment and the continuation of our

Scholarship programme to Schools in Nowra. Next year will be our fifth year in awarding Scholarships and we can only continue the programme if our Garage sale is a success each year.

Our final Scholarship awards presentation will take place on 13th December at Nowra High School. We recently had the pleasure of having Tim Orange head of Wellbeing and the two winning students visit our Shed and meet with our members.

This year's Christmas party luncheon will be held on Thursday 13th December from 12 noon at the Shed and all members are invited to attend. The cost will be \$25 per person and payment and notification of attendance at the

Shed is required by the end of November. We hope to have a few surprises on the day. The Tardis trophy will be awarded to one of our members on the day for their outstanding contribution to the Shed over the last year.

At the recent AGM the following executive roles were filled. President – Phil Reid, Vice President – Peter Johnstone, Secretary – Christine Murphy and Treasurer – Peter Sommer.

Finally thank you to all the members of the Berry community for bringing in items for repair as this keeps us very busy during the year.

Richard Wiseman - Public Relations

ANN SUDMALIS MP Federal Member for **Gilmore**

The Federal Government increased drought support of **\$1.8 billion** will help my local farmers who have been asking for a well organised approach to the assistance and fundraising by all Australians.

The drought response includes the appointment of a National Drought Coordinator, new tax breaks for farmers, low-interest loans and the application form for the Farm Household Allowance is being made easier.

However more awareness needs to be raised about the tough conditions facing our dairy farmers and I'll continue to fight for this on their behalf.

For help with the Farm Household Allowance, contact the Rural Financial Counselling Service on **1800 686 175** or the Farmer Assistance Hotline on **13 23 16**.



NB: due to increased call volumes some delays may be experienced.

JOBS

(02) 4423 1782

ROADS

annsudmalismp.com.au

WELLBEING

DEFENCE

ann.sudmalis.mp@aph.gov.au

Authorised by A.Sudmalis MP, Liberal Party Australia, 59 Junction Street, Nowra NSW 2541.

The Cockerill Family

Above the store at 83 Queen Street Berry is an old metal sign, surrounded by ivy, which reads: W. H. Cockerill's Motor Coach Blacksmith & Farrier Works.

W.H. Cockerill was the son of John William (Jack) Cockerill who first established his business in Gerringong in 1875 and became known over the next decade for his ploughs that enjoyed success in both agricultural & ploughing matches. Jack won prizes at the Broughton Creek Show for single and double buggies, spring and dip carts and his collection of horse shoes.

An 1884 advertisement reveals that 'Buggies, Pagnel Carts, Spring Cart, Drays, Ploughs and Harrows were made to order' and a reporter at the 1888 Kiama Show made particular mention of the excellent variety of horseshoes that took prizes for Cockerill.

In early 1894 Jack relocated to Queen Street Berry and when Governor Hampden opened the Berry Show in 1896, Jack again won special recognition for his horseshoes. He advertised on the 1899 Berry Register's calendar as a 'Wheelwright, coachbuilder, horse-shoer and agricultural implement maker. Vehicles and implements of every description made or repaired on the shortest notice and at lowest possible prices'. His single-seated buggies won blue ribbons at the Nowra and Kangaroo Valley Shows in 1903.

Jack was greatly respected in the trade and was elected as an Alderman on Berry Municipal Council. Unfortunately, he had to resign from Council in 1903 due to being declared bankrupt and his son, William Henry (Bill), took over the Berry business. By 1906 Jack was back on his feet financially and opened a new business in Terralong Street Kiama and within a couple of years father and son were competing in the local shows.

In August 1912 Bill Cockerill moved to the premises at the now 83 Queen Street Berry. These premises included a residence and forge that had originally been purchased from the Berry Estate. Following in his father's footsteps, Bill enjoyed success in the agricultural shows and took blue ribbons at the 1914 Berry Show with his iron plough and farrows.

Like his father before him, Bill advertised in the local paper and his add in the South Coast Register on April 30, 1926 reflected the changing times, as this add was addressed to Car Owners. It offered the services of a first-class mechanic and engineer and the business was entitled W. Cockerills Garage and Engineering Works.

Bill left Berry in 1942 to take up work for the war effort in Sydney. After the war his son Neville, the third generation to work in the trade at Berry, reopened the business in August 1946. Bill returned to help out, but the business closed permanently in 1949 when the plant was sold at auction.

Left: Cockerill Coachbuilder-Queen Street Berry. Pictured left to right are Alex Morrissey, Bill Cockerill, Bob Leggatt, Jack Boyle and George Pepper. Far Right: The Sign above 83 Queen Street Berry.



Berry Museum

135 Queen Street
BERRY 2535



OPENING HOURS

Saturdays, School Holidays
and Public Holidays

11.00am - 2.00pm

Sundays

11.00am - 3.00pm

FREE ENTRY

www.berryhistory.org.au



ST. LUKE'S ANGLICAN CHURCH

68a Princess Street Berry

Serving the Berry community since 1873

Acting Rector Rev Stephen Fifer

Join us for Sunday services

8:00 am (Traditional) or 9:30 am (Families)

or the 1st, 3rd and 5th Thursdays at 11:00 am (Communion)

Phone 4464 1058 or Email office@berry.anglican.asn.au

For information on activities www.berry.anglican.asn.au



'Proclaiming Christ,
serving the community
with love'

Berry Uniting Church

77 Albert Street Berry

P: 4464 2904

E: berryuniting@gmail.com

Sunday Celebrations: 9.30am

Groups & Activities:

- Bible Study Groups
- Fellowship Groups • Prayer Groups
- Social Craft Group
- Computers for Seniors
- Berry Apple Users Group
- Coffee and Friends
- Berry Community Library

www.berryuniting.org



Well as you read this can you believe we are at the end of another year?

I guess time flies when you're having fun and that rounds up our past year with mainly music. We have welcomed new babies, new families who have become residents of the area, as well as all the beautiful families who have supported the group over the time, we have been running the mainly music program. I would also like to acknowledge the effort the team have contributed towards the everyday running of the programme - great job everyone!

The families will be celebrating the end of year function as a combined group with the Berry Playgroup at Penwood rail on Tuesday 11th December. The children are very excited about this adventure and we are thankful to the team at Penwood for the willingness to open for our special morning adventure. This will be our last day for the year, and we will look forward to reopening on the beginning of 1st term 2019.

We wish you and your families a very safe and happy Christmas.

**FOR MORE INFORMATION CONTACT
TRISH ON 0401 151 820.**



Our AGM in October re-elected all current office bearers to their positions. Thanks to all members and supporters who attended the meeting and continue to support the Club.

Changes to Court Hire Charges and Key Pick Up - Berry Tennis Club Members can now hire a Court without charge for bookings of up to 2 hours!

There has also been a change to Court Hire Key Pick Up. The new locations are:

- Daytime to 5.00pm – Il Locale Cafe - Queen Street. Please ask at the counter. Present membership card for free hire. Payment for hire in cash only please.
- From 5.00pm – Quattro Pizzeria – Alexandria Street. Please ask at the counter. Present membership card for free hire. Payment for hire in cash only please.

Berry Tennis Club thanks these businesses for taking on this role for us, at no cost to the Club.

Wishing all Berry Tennis Club members a safe Festive Season and a Happy 2019!

Our weeknight summer comps start again in early February

The Club's fundraiser trivia night is on from 5pm on Sunday 17 February 2019 at Berry Hotel.

For enquiries about membership, comps or events you can always email: berrytennis@hotmail.com.



Berry Community Church

The Baby who would change the world

This year Australians are tipped to spend around \$51 Billion on Christmas. To put this in perspective, this is about twice what the NSW government spends on Health care each year. From the outside looking in, this must seem absolutely bizarre. Christmas is a celebration of the birth of a baby, who was born some 2000 years ago over 14 000 kilometres away to a couple of no consequence in a small town in the back blocks of the Roman Empire. UNICEF estimates that there are 4.2 babies born every second. What made this one so significant? Why would reasonable people fork out such a huge amount of money to celebrate this birth?

It wasn't so much the birth that was significant (although the circumstances surrounding it were incredible) it was who this baby was and what He would grow up to do. No single person in all of human history has impacted the world like Him. His name was Jesus which means 'the one who saves', later He would be given the title 'Christ' which means 'the anointed one' or 'the one sent from God'. He grew up to live up to both these names. He would travel around Israel speaking of a new way, a way of life that would reconnect people with God.

The Bible and other historical sources record that He healed people from every illness, raised the dead, brought sight into blind eyes and performed countless other miracles. He lived a perfect and upright life, full of integrity and compassion for all. At the age of 33, He submitted himself to death by crucifixion. This sacrifice of one perfect man was to make a way for everyone who believed in Him to be with God forever. If that were it, you might wonder if this were true. However, this was not the end of the story. Three days later he would come back to life, His resurrected body would be witnessed by over 500 people (1 Corinthians 15:6). This amazing miracle once and for all proved that He was more than just a man – He was (and is) God himself.

This Christmas take some time to read the incredible story of Jesus (the account of Luke is a good one) and if you find any truth in it please come along to, or get in touch with any of the Churches in town.

**Joel Noonan
Berry Community Church**



Berry Community Church

Lighting up lives and communities with Jesus

**We meet at Graham Park
8 Schofields Lane Berry**

Sunday Services 9am, 10am & 5pm

Activities include mainly music, Boys & Girls groups,
Berry Youth & Connect groups.

We'd love to see you here.

info@berrycommunitychurch.org 4464 2315



www.berrycommunitychurch.org

SHOALHAVEN CITY COUNCIL NEWS FROM BERRY

THE BERRY FORUM IS THE COMMUNITY CONSULTATIVE BODY

The following Development Applications and determinations have been notified during the month. They are also placed on the Community Noticeboard and posted on the Forum website www.berryforum.org.au Details of applications, including submissions, can be viewed on Council's website at www.shoalhaven.nsw.gov.au and select **DA Tracking**.

	Development Applications Received	Address	Lodged
DA18/2200	Subdivn creating 2 lots & construction of duplexes on both lots	21 Victoria Street	29-Oct
DA18/2203	Dual occupancy and community title	Tilgman Street	29-Oct
DA18/2209	Attached two storey dual occupancy	14 Tressider Close	30-Oct
DS18/1462	Change of condition re footpath for pedestrian access	Huntingdale	7-Nov
DA18/2244	Inground swimming pool and deck	356 Woodhill	8-Nov
DA18/2245	Extension and dwelling alterations	289 Brogers Creek	8-Nov
DA18/2251	Dwelling additions and alterations	7 Queen Street	9-Nov
DA18/2252	New two storey dwelling	77 Parker Crescent	9-Nov
DA18/2254	Construct detached dual occupancy	Hitchcocks Lane	12-Nov
	Development Applications Determined		
DA18/1182	Dual occuoancy	24 Queen Street	16-Feb
DA18/1917	Inground swimming pool	218 Bundewallah	20-Aug
DA18/1447	Rural Dwelling Alterations & Additions	209 Kangaroo Valley Road	23-Apr
DA18/2112	Rural Dwelling Additions - Carport & Breezeway	109 Ben Dooley Road	2-Oct
DA18/1722	New rural dwelling, pool. Demolition of existing structure.	64 O'Keefes Lane	4-Jul
DA18/1948	Swimming pool	60 Crago Rise Wdhl	24-Aug
DA18/2030	Alts & addns to dewlling, pool, deck & spa	482 Tourist Road	12-Sep
DA18/1738	Change of Use - From Wholesale Nursery to Retail Nursery	45 Agars Lane	6-Jul
DA18/1895	Extensions & renovations to existing dwelling. Extend driveway	185 Bundewallah	14-Aug
DA18/2031	Alts and adns to workshop	74 Borrowdale Close	12-Sep
DA18/1891	New single storey dwelling	Lot 24 Bundewallah	13-Aug

<div>  <div>Reference Guide</div>  </div>	
SUBJECT	DETAILS
Sustainability Workshops through Shoalhaven Council	Bookings are essential. Shoalhaven Council's website has links to Eventbrite for bookings. You may leave your contact details to be notified of upcoming events if bookings are full. Coming up: <ul style="list-style-type: none"> Nov 24 Beeswax Wraps (at Vincentia) Nov 24 Japanese style fabric gift wrapping (at Vincentia)
Water restrictions	Although we have had plenty of rain recently, at the time of publication Council's Level 1 water restrictions remain in place. This means: watering gardens and lawns may only be done with by hand-held hose, or by a sprinkler/drip irrigation on a timer; no washing down of hard surfaces; cars or boats may be washed with a hand-held hose; and topping up of existing pools may be done, with the use of a timer. To preserve moisture in the soil and protect plants, mulch garden beds and water in the cooler parts of the day, before 10.00 am or after 4.00 pm. Depending on availability, free mulch is available from Berry Waste Depot.
Mattress Recycling	Mission Australia Soft Landing 1800 763 852 softlanding.com.au Berry Waste Depot \$29 fee
Fridge Buyback program	For eligible households, free collection and \$25 rebate 1800 708 401 fridgebuyback.com.au If you're not eligible for the program, the Berry Depot charges \$12 to take old fridges.
Mobile phone recycling	Drop off points for Mobile Muster at Post Offices nationally. Retail mobile phone shops, Officeworks, and Shoalhaven Council Administration centre all have recycling bins for old phones. Greener Mobile 1300 128 900 buy and recycle old phones, tablets and smart watches. The group pledge to plant a tree for every phone recycled. Berry Waste Depot also accepts old mobile phones.
Alternatives to single use coffee cups	Local cafes offering a discount when you bring your own reusable cup: Just Delicious, The Emporium Food Company, The Dairy Bar, Blue Goose Café (Gerringong), Ninety One Junction (Nowra), Zest Café & Catering (Nowra) The Cake Store (Nowra) Green Caffein is an initiative launched in August 2018 in Kiama, as a swap and go reusable cup system. Perfect for the days when you forget your own cup. Participating cafes include: Il Locale, the Blue Swimmer in Gerroa, and another forty cafes across the Illawarra region. More information about the program can be found on Green Caffein's Instagram or Facebook pages.
Berry Waste Depot free recycling service	The depot accepts computer and electrical equipment, electrical leads, recyclable metal, smoke detectors, compact and fluorescent light bulbs, car batteries, motor and other oils, gas, water- and oil-based paints and batteries.
Illegal dumping	Contact Shoalhaven Council Ranger Services on 4429 3433 (after hours 4421 3100). If the matter is urgent, contact the Environmental Protection Agency on 131 555.
Recycling / reuse at local shops	Flavours Shoalhaven refill Morella Grove olive oil glass bottles. Take your own containers to Leaf Thai restaurant for meals, Il Locale for gelato, and the deli section at IGA. The Treat Factory will fill your container or glass jar for bulk dried fruit, nuts etc, during quiet periods.
Medication and Sharps Disposal	Medically generated syringes, needles and sharps can be disposed of for free at the Berry Pharmacy. Take your sharps in a sealed puncture resistant container. The pharmacy will also safely dispose of out of date medication.
Environmentally conscious brands to support	IGA stocks: If You Care (household cleaning, cooking and storage products, toothbrushes); Ansell eco-rubber gloves; Ecostore cleaning products; Safe toilet paper (paper wrapping). Nourish Kitchen + Lifestyle stock beeswax wraps for food, as well as kits to DIY; White Magic cleaning and food storage products; Keepcups, Avanti, Teaology, Casa Barista and Earth Bottles for your take away coffees and other beverages.
Libraries let you purchase less, and read more	Shoalhaven Council's library bus is parked in Princess Street just past the School of Arts building, every Friday from 2.00 pm to 4.00 pm. Berry Street Library in Broughton Place is sponsored by the Berry Alliance; borrow, read and return, or add a book for someone else to enjoy. Berry Community Library at the Berry Uniting Church is open Mon and Wed 1-4 pm, Tues, Thurs, Fri 10 am – 1 pm.

Berry Restaurants & Cafes, Functions & Catering Guide

RESTAURANTS & CAFES

HEDGEHOGS COFFEE SHOP

4/98 Queen Street, Berry - t 4464 3051

7 days - 8am to 4pm

www.hedgehogscoffeeshop.com.au

SAVANNAH CAFE

Stan Burt Arcade, Berry - t 4464 3880

Please note our NEW opening hours

Closed: Tuesday

Lunch: Everyday from 11am except Tuesday's

Breakfast: Weekends & Holidays ONLY from 9am

Dinner: Friday and Saturday nights from 5.30pm - bookings are essential!

FUNCTIONS & CATERING

BERRY COURTHOUSE AND GARDENS

Corner Victoria Street and

Albany Street Berry 0458 369 266

www.berrycourthouse.org.au

functions@berrycourthouse.org.au

Facebook Berry Courthouse

Functions, Weddings, meetings inside historic Courthouse and in purpose designed gardens.

SAVANNAH CAFÉ

Stan Burt Arcade (shop 5 - in the arcade behind Cuckoo Corner)

t 4464 3880

www.savannahcafebar.com

Facebook:

facebook.com/savannahcafebar

If you would like your restaurant listed here please contact Nancy Davies 0428 037 572 or Email towncrier@berryalliance.org.au

Would you like
to see your
restaurant /
café / catering
service listed
in the guide
in 2019?

Simply get in touch
to find out how.

Contact – Nancy Davies
0428 037 572
or towncrier@berryalliance.org.au.

Calendar of Events

NOVEMBER/DECEMBER

23 November - Friday - The Australian Institute of Architects will be holding a seminar at the Berry School of Arts titled, 'The Changing Face of Regional Country Towns - Berry 2050'. Doors are open to all residents at 1.30pm for an information session on the Draft Urban Design for Regional NSW. See Page 5 for more information.

24 - 25 November - Saturday & Sunday - Berry Riding Club's Pink Ribbon Horse Festival. Riders of all ages and abilities are invited to come and join the fun, and help us raise funds for the National Breast Cancer Foundation. Dressage takes centre stage on Saturday 24th, with horse and rider combinations putting themselves to the test on our fabulous new arenas. Then on Sunday 25th it's the Fun-khana, with ring events for all levels of riders. See more on page 18.

1 December - Saturday - 2:30pm - Shoalhaven Lydian Singers present THE MORNING STAR at St Patrick's Church, Berry. TICKETS: \$30, Concession: \$25, Students: \$10, Under 15 FREE. Afternoon tea included. <http://www.lydiansingers.org.au> Contact: 0412 219 895

2 December - Sunday - 2:30pm - Shoalhaven Lydian Singers present THE MORNING STAR at Nowra School of Arts. TICKETS: \$30, Concession: \$25, Students: \$10, Under 15 FREE. Afternoon tea included.

<http://www.lydiansingers.org.au> Contact: 0412 219 895

8 December - Saturday - CWA craft street stall, Broughton Court.

8 December - Saturday - Berry Cool Estate Market, 16 Coolangatta Road - Nursery, Café, Food Trucks, Markets, Live Music, Children's Activities, Pets Welcome.

14 December - Friday - Monthly meeting of the Berry Branch of the CWA of NSW at 1 pm followed by afternoon tea. At the CWA rooms 79 Victoria St Berry, visitors welcome.

24 December - Monday - Carols in the Park - 7pm Berry Apex Park- bring a chair or rug and celebrate Christmas with the people of Berry. Organised by the Christian Churches of Berry - Enquiries: Ken Wade 0408 644 063.

REGULAR EVENTS:

Mainly Music - for preschool-aged children and their carers. Every Tuesday during term time at 10am. Venue Berry Community Church, Schofields Lane. \$5

The Berry Computers for Seniors - meets in the Berry Uniting Church hall on the first and third Wednesdays of each month from 9.00 - 10.30am.

The 'Third Wednesday Book Group' - will meet in the Community Library June from 4-6pm. We bring along our favourite books or talk about our favourite authors and enjoy drinks and nibbles along the way. Everyone is welcome.

Gentle Chair Yoga - Every Tuesday 9.30 - 10.30am except the first Tuesday of the month. Phone 0412 244 735 for class details.

Enriching Chair Yoga - Every Wednesday 9.30 - 10.30am at St Lukes Hall, except the first Wednesday of the month. Phone 0412 244 735 for details. Class includes strength, flexibility and balance whilst sitting or standing using chair as support. \$15 class No term fees

Dancing for Joy - Every Thursday 9.30 - 10.30am at Berry Uniting Church Hall, except the first Thursday of the month. Phone 0412 244 735 for class details Suitable for everyone. No partners needed. Variety of dance styles to exercise your brain, improve balance, increase vitality and Joy. \$15 class. No term fees

FUTURE DATES

12 January - Saturday - Berry Cool Estate Market, 16 Coolangatta Road - Nursery, Café, Food Trucks, Markets, Live Music, Children's Activities, Pets Welcome.

19 January - Saturday - Berry Gala Showgirl Community Ball. Everyone welcome, Berry Showground Pavilion. 6.30pm. Dress- Lounge Suit/ Formal. BYO- Drinks. Catering by Salmon & Co. Fully Air conditioned. Music by Stella Girlz. Tickets \$70 pp. Book a table. Tickets available from www.trybooking.com/439305. for more details contact Therese on 0403285923 or evertpt@bigpond.com

7 February - Thursday - ADFAS Lecture The Tentmakers of Old Cairo presented by Jennifer Bowker. Berry School of Arts, Alexandra Street, Berry at 7.30 pm.

9 February - Saturday - Berry Cool Estate Market, 16 Coolangatta Road - Nursery, Café, Food Trucks, Markets, Live Music, Children's Activities, Pets Welcome.

28 February - Thursday - ADFAS Lecture Auguste Rodin and the Gates of Hell presented by Jacqueline Cockburn. Berry School of Arts, Alexandra Street, Berry at 7.30 pm.

9 March - Saturday - Berry Cool Estate Market, 16 Coolangatta Road - Nursery, Café, Food Trucks, Markets, Live Music, Children's Activities, Pets Welcome.

Annual Events Guide for Berry 2018

For more information regarding each event please refer to the community group listing on the next page.

Registered Community Groups organising annual events are welcome to contribute and advise of further information or changes to listed information.

MONTH	EVENT
RECURRING MONTHLY EVENTS	<p>First Sunday of the Month</p> <ul style="list-style-type: none"> • Penwood Railroad Inc, a scenic miniature railway open from 10:30am till mid afternoon. 215A Princes Highway - Jaspers Brush NSW - Ph: 02 4464 1201 • Berry Country Fair (Berry Markets). Approximately 200 stalls selling handmade products, arts and crafts, fresh produce and more. Berry Showground • Berry Cool Estate Market, 16 Coolangatta Road – Every second Sunday of the month. Nursery, Café, Food Trucks, Markets.
JANUARY	
FEB	131st Annual Berry Show – 1st & 2nd Feb 2019 Berry Showground
MARCH	
APRIL	ANZAC Day Youth Week Easter Celebrations
MAY	Berry Celtic Festival, Berry Showground National Motoring Heritage Day, Berry Showground
JUNE	
JULY	
AUGUST	4th & 5th - Annual Camellia and Floral Show
SEPTEMBER	Berry Small Farm Field Day
OCTOBER	18-21st - Berry Garden Club's Annual Garden Festival
DECEMBER	Remembrance Day 3rd DECEMBER Berry Men's Shed Annual Garage Sale
DECEMBER	Berry Merry Christmas Carols in the Park, Apex Park Rotary's New Year's Eve Fireworks Berry Showground

Bush Fire Danger Period and Fire Permits

A Fire Permit will be required for burning activities during the Bush Fire Danger Period which started on 1st September 2018. Fire Permits help ensure fire is used safely and minimise the danger to you, your property and the community.

THE KEY THINGS TO REMEMBER

- You need a fire permit if it's the Bush Fire Danger Period.
- Just because it's the Bush Fire Danger Period doesn't mean you can't use fire - but there are restrictions to ensure fire is used safely.
- Getting a permit is free and easy. Contact Fire Control Centre on 4424 4424
- There are heavy penalties if you don't follow restrictions or rules.

ALL BERRY AND DISTRICT CHILDREN EXCITING NEWS!

We have had advanced notice that Santa will be driving around the district in the Big Red Fire Truck between 5pm and 7pm on Christmas Eve. So make sure you keep a look out for him and if you have been good, there may be some lollies for you!

For more information go to <https://www.rfs.nsw.gov.au/fire-information/BFDP>

**Santa Run
Christmas Eve**



THE SHOALHAVEN
LYDIAN SINGERS PRESENT:

THE MORNING STAR



This program will include a selection of traditional and well-loved carols, but the highlight will be the Sunrise Mass by Ola Gjeilo. Performances both at 2:30pm on Sat 1st December at St Patrick's Catholic Church, Berry, and Sun 2nd December at the Nowra School of Arts. BOOK ONLINE (strongly recommended) by 30th November via www.TryBooking.com with Promo Code SUNRISE, or buy tickets at the door. Adults \$30, Concessions \$25, Students \$10, Under 15 free. Contact 0412 219 895 for more information.



TOWN CRIER

Keeping Berry Informed

The Town Crier is a community newspaper produced monthly by the Berry Alliance. Our current circulation is 2400 copies. The Town Crier is distributed in and around Berry. Additional copies are given to shops, cafes, hairdressing salons, doctors and restaurants within the township to alert tourists as to what's happening in Berry.

The Berry Alliance would like to thank advertisers for their support. It is only through advertising fees, subscriptions and sponsorships that our community paper can continue to provide such communication.

Advertising rates Display Ads

1 Column - Single rate = \$110 or
Repeat rate = \$297 (\$99 x 3 issues)
Dimensions: 10cm high x 6cm wide

2 Column - Single rate = \$143 or
Repeat rate = \$363 (\$121 x 3 issues)
Dimensions: 10cm high x 12cm wide

3 Column - Single rate = \$176 or
Repeat rate = \$495 (\$165 x 3 issues)
Dimensions: 10cm high x 18.5cm wide

Full Page - Single rate = \$341 or
Repeat rate = \$858 (\$286 x 3 issues)
Dimensions: 27cm high x 18.5cm wide

*Repeat rate applies to 3 or more issues
with no changes and one invoice.

Community Groups

BERRY COMMUNITY GROUPS

Berry Alliance Inc. 0449 569 059
PO Box 202 Berry 2535
info@berryalliance.org.au
www.berryalliance.org.au

Berry Alliance Town Crier 0428 037 572
PO Box 202 Berry 2535
towncrier@berryalliance.org.au
www.berryalliance.org.au

Berry Chamber of Commerce & Tourism Inc.
PO Box 216 Berry 2535 4464 3122
info@berry.org.au www.berry.org.au

Amnesty International Berry Local Action Group
PO Box 397, Berry 4464 2879
Contact Susan Locke
info@berryamnesty.happenings.id.au

Australian Red Cross 4464 2479
Honorary Secretary -
Margaret Walsh 21 Windsor Drive Berry
1st Wednesday each month at 2.00pm
Berry Uniting Church

Berry Alcoholics Anonymous 1300 903 392
Meets every Thursday Night at 7.30pm,
Uniting Church Hall Annex,
77 Albert Street, Berry - Garry: 0420 932 494

Berry Al Anon Family Group For family & friends of problem drinkers 4448 8231
Meets in the Friendship Rooms of the Uniting Church 77 Albert Street Berry on Mondays at 7pm

Berry Forum (Community Consultative Body)
www.berryforum.org.au
2nd Thursday bi-monthly 7.30pm at the School of Arts Berry

Berry Community Activities Centre Inc. 4464 1476
Berry Community Craft Cottage
12 Prince Alfred St Berry 2535
1st Monday Monthly, 5pm @ Muir House
berrymarkets@bigpond.com

Berry Courthouse Conservation Committee
PO Box 218 Berry 2535 0458 369 266
2nd Monday Bi-monthly at 5.30pm
at the Berry Courthouse
functions@berrycourthouse.org.au
www.berrycourthouse.org.au

Berry Evening View Club 4464 1191
Secretary, PO Box 275
sel4957@bigpond.net.au
Meets 3rd Wednesday monthly, 6.30 pm
at Berry Bowling Club

Berry Masonic Village Auxiliary Inc 4464 1774
Mail: 42 Albany Street, Berry, NSW, 2535
3rd Wednesday monthly, 9.30am in Activity Hall, Albany Lane, Berry Masonic Village

Berry Meals on Wheels 4464 1604
PO Box 221 Berry NSW 2535
3rd Monday monthly at 9am RSL Hall Berry

Berry Men's Shed 4464 3956 / 4464 2619 A.H
PO Box 103 Berry 2535
richardcwiseman@hotmail.com
Tuesdays and Thursdays 9am-4pm
North Street Berry www.berrymensshed.com.au

Berry RSL Sub Branch
PO Box 3307 North Nowra 2541 -
stuartchristmas@gmail.com
1st Tuesday Monthly at 9.30am
Sub Branch Hall 26 Alexandra St Berry

Berry Rotary Club 0408 979 337
PO Box 81 Berry 2535
barker_killaloe@hotmail.com
Every Thursday 6pm for 6.30pm at
Bowling Club - www.berryrotary.org.au

Berry Show Society Inc. 4464 1567
PO Box 173 Berry 2535
Meet 1st Tuesday monthly at
Committee Rooms at the Showground
berryshow@virtualcity.com.au
www.berryshow.org.au

Berry Showground Management Committee
PO Box 443 Berry NSW 2535 -
berryshowground-camping@gmail.com
Meet 2nd Monday Bi-monthly 7.30pm
Old Council Chambers
24 hour Caretakers / Bookings
Caretakers 0427 605 200

Boomerang Bags Berry 0416 181 543
Meetings: 1st Tuesday of the month:
Committee Rooms, Berry Showground.
Contact: Katrina Underwood 0416 181 543
Contact Elizabeth Dubbelde 0431 663 189

Country Women's Association - Berry Branch

PO Box 321 Berry 2535
2nd Friday each month at 12.30pm
in the CWA Rooms, Victoria Street
Contact Emily Boorer 0417 423 018

Conservation Committee for the Berry Railway Station Precinct
Meets fortnightly at the Berry Museum
Contact: sandraberner@hotmail.com

David Berry Hospital Auxiliary 4464 1774
PO Box 285 Berry 2535
bke25349@bigpond.net.au
2nd Monday Monthly, 12.30pm
David Berry Hospital Conference Room

Freemasons Lodge Broughton 131 4421 7346
PO Box 2092 Bomaderry NSW 2541
Secretary: John Dyason
lodgebroughton131@gmail.com

Jaspers Brush Airport Action Group Inc.
www.takeaction.org.au
PO Box 428 Berry NSW 2535
Meeting as convened

Lodge Broughton 131 4421 8026
P.O. Box 2092 Bomaderry 2541 NSW
lodgebroughton131@gmail.com
Meets 1st Wed. of each month except
Jan. at the Agricultural Hall Berry

Probus Club of Berry 4464 3525
PO Box 68 Berry 2535
berryprobus@gmail.com
Meets 2nd Tuesday monthly, 9.30am
Berry Masonic Village Hall

Shoalhaven Poultry Group 0410 548 704
161 Kangaroo Valley Road
1st Wednesday each month above address
info@shoalhavenpoultry.com.au
www.shoalhavenpoultry.com.au

St. Vincent de Paul Society Client Help Line:
PO Box 77 Berry - Ph 4464 3940 4421 0390
Vinnies Boutique Shop 117b Queen St Berry
Conference meets every 1st Mon.
7pm St. Patrick's Hall

Zonta Club of Berry
Rosemary Courtney (0430 359 443)
or 4464 2653 (Leonie Winlaw)
PO Box 302 Berry 2535
Email: berry@zontadistrict24.org
www.zontadistrict24.org
Meets 4th Tuesday monthly for dinner

ARTS

Berry School of Arts
Office open Thurs and Fri 10am till 3pm.

Australian Decorative Fine Arts Societies - Shoalhaven
PO Box 269 Berry NSW 2535 0429 549 942
www.adfas.org.au/shoalhaven/
Monthly, 7.30pm at The Berry School of Arts

Berry & District Historical Society Inc
PO Box 153 Berry 2535 4464 3097
berrymuseum@bigpond.com
www.berryhistory.org.au

Berry Silver Band (est. 1897)
Owen 4464 1250 / Kaye 4465 1240
6 Clarence Street Berry 2535
kayecj@westnet.com.au
Meet Monday evenings 7.30-9.30pm,
Agricultural Hall, Berry Showground

Berry Spinners and Weavers
Contact the secretary (Alison) on 0422 760 363
PO Box 377 Berry 2535
berryspinnersandweavers@gmail.com
Thursdays 10-12noon at Berry Showground Hall

Cantares: Community Choir
Monday 7.30 - 9.00pm
Scots' Presbyterian Hall, Alexandra Street Berry
Contact: Peter Dalmazzo 4448 6164

Knit with Love
Lyn 4464 3651 c/- 34 Princess St Berry 2535
terryandlyn@gmail.com
Meets Every Friday 1pm - 3pm
St Luke's Anglican Church Hall

RedBerry Quilters
Meetings held on the 4th Friday of each month
9.30am-1.30pm. Sewing Days held on the
2nd Friday of each month 9.30am-1.30pm at
St Luke's Anglican Church Hall, Princess Street
Please contact mail to:
secretary@redberryquilters.org

CHURCHES

Berry Community Church 4464 2315
8 Schofields Lane Berry
Services 9.00am, 10.00am and 5.00pm
info@berrycommunitychurch.org

Berry Uniting Church 4464 2904
77 Albert Street Berry
Services at 9.30am
berryuniting@gmail.com

Meroo Union Church 4448 6048
Monthly service at 2pm
(3rd Sunday of the month)
Corner of Boxells Lane & Princes Hwy,
Meroo Meadow. Contact Rae 4448 6048

St. Luke's Anglican Church 4464 1058
68A Princess Street, Berry 2535
office@berry.anglican.asn.au
www.berry.anglican.asn.au

St. Patricks Catholic Church 4423 1712
Albert St. Berry - Normal Mass times:
Sunday 8am Tuesday 5.30pm
Community Group PO Box 304 Berry meets
2nd Monday 7pm St. Patricks Hall

Scots' Presbyterian Church in Berry
E. isaac.jung@hotmail.com 0405 139 031
H. 81 Victoria St Berry

EDUCATION AND PLAYGROUPS

Berry Apple Users Group 0416 168 638
P.O. Box 103, Berry, 2535
Meets at 7.00pm on the 2nd Tuesday of the
month (except January) at
Berry Uniting Church Hall,
77 Albert Street, Berry
Email: berryappleusersgroup@gmail.com

Berry Community Pre-school 4464 1764
PO Box 143 Berry 2535
berrypreschool@bigpond.com
www.berrypreschool.org.au

Berry Computers for Seniors 4421 3270
PO Box 103 Berry 2535
1st and 3rd Wednesdays of each month,
9.00 - 10.30am, Uniting Church Hall,
77 Albert Street, Berry

Berry Ethics Society 0451 153 332
PO Box 363 Berry - Meets 1st Monday of each
month at the Berry Hotel

Berry Playgroup
Berry Community Church Hall
Schofields Lane, Berry. Fridays 10.00-12.00
Facebook: The Berry Playgroup
Email: berryplaygroup@hotmail.com

Berry Public School P&C Association 4464 1158
PO Box 222 Berry 2535
berrypandc@gmail.com

Mainly Music 4464 1693
Berry Community Church Hall -
for children under five and parent /carers
Meets Tuesdays during school term
10-11.30am \$5 per family

GARDENING AND LAND CARE

Berry & District Garden Club 4464 1191
PO Box 122 Berry 2535
3rd Tuesday Monthly, 7.30pm
St Luke's Church Hall, Princess Street
Mary Seelis - Secretary
www.berrygardens.org.au

Berry Landcare 4464 2241
PO Box 422 Berry NSW 2535
berrylandcare@gmail.com
See monthly article for working bees

Berry Public School Plant Propagation Nursery
Lyn 02 4464 3911
Meet Thursday afternoons during school hours
lyn-clark@outlook.com.au

Brogers Creek Landcare 4465 1482
53 Wattamola Road Wattamola NSW
Last Saturday of each month 2.30-4.30pm

Gateway Community Garden
141 Woodhill Mountain Road
All welcome, plots available.
Contact: Tom Darby 4464 2859

Hands Across NSW Inc 4446 0567
PO Box 162 Cambewarra NSW 2540
Meets 1st Sunday, monthly at Broughton Lodge,
Berry Agriculture Hall

POLITICAL GROUPS

Australian Labor Party Berry 0429 012 796
Shoalhaven Heads Branch
Meets 2nd Wednesday each month,
6.30 pm Hotel Berry
secretarybshalp@gmail.com
PO Box 474 Berry 2535

Liberal Party of Australia - Berry Branch
0412 550 480 hartwell@bigpond.com
Meets 1st Monday of the month
06.30pm for 07.00pm start at the Berry Hotel

RECREATION

Berry Bridge Club INC 4464 3009
PO Box 366 Berry 2535
mcorran@shoalhaven.net.au
Meets Saturdays @ 12.45pm-4.30pm at the
Masonic Lodge Community Hall

Berry Camera Club 0488 031 961
Meetings on 4th Wednesday of Each Month
6:00pm @ Berry Bowling Club
Info: www.berrycameraclub.com
fb:BerryCameraClub

Berry Crafters & Quilters 4464 3788
Meets each Wednesday 10am-4pm at
Muir Cottage, Prince Alfred Street

Penwood Rail Road Inc. 4464 1201
B215a Princes Highway Jaspers Brush 2535
Running day 1st Sun monthly - visitors welcome

Shoalhaven Historic Vehicle Club Inc. 4464 1723
PO Box 1, Nowra NSW 2541

SPORT

Berry Hockey Club 0412 218 704
PO Box 4055 Nowra East NSW 2541
www.berryhockeyclub.com.au

Berry Netball Club 0417 285 789
1 Barwon St Bomaderry Meets monthly at the
Great Southern Hotel MT816834@bigpond.net.au

Berry Men's Bowling Club
Berry Men's Bowling Club
PO Box 139 Berry NSW 2535 Club 4464 2995
President: L McNamara 4464 1868
Bowls Organiser: D Lambert 4464 2332
Bowls Bookings: 0475 768 249

Berry Junior Mixed Touch Football 0431 530 543
7 Boran Place Berry becantom2@bigpond.com
School term 4 - Thursday 4pm till 6pm at the
Berry Sporting Complex, North Street Berry

Berry Riding Club 4464 1143
445 Coolangatta Road Berry 2535
1st Tuesday monthly at the Berry Hotel
jasiy@bigpond.net.au www.berryridingclub.com

Berry Shoalhaven Head Rugby
League Football Club
First Wednesday evening of the month at
The Berry Hotel - 7pm Great Southern Hotel,
Berry. Email: berryjuniorleague@gmail.com
www.facebook.com/groups/325991097440833/

Berry Shoalhaven Heads Cricket Club
0422 688 901
PO Box 206 Berry NSW 2535
www.bshcc.nsw.cricket.com.au
2nd Monday of each month
during cricket season at the Berry Hotel

Berry Shoalhaven Heads Junior League
0414 973 795
PO Box 162 Berry 2535 bshjrflc@hotmail.com
First Wednesday of the month
7pm at the Berry Bowling Club

Berry Tennis Club
PO Box 133 Berry NSW 2535
e: berrytennis@hotmail.com
Meet 7pm second Thursday of every second
month at Clubhouse at Tennis Courts

Berry Women's Bowling Club
Meet Tuesdays and Thursdays 9am during
daylight savings; 9.30 in winter @ Berry Bowling
Club. Contact Heather Fealy 4464 3624 or
Pam Tulloch: 4464 2284

Diamond Calisthenics Club
Jodie Dearsley 0414 655 129
Classes for ages 3-100 held Tuesdays at Berry
School of Arts, Cnr Alexandra & Princess Sts
www.diamondcalisthenics.com
diamondcalisthenics@hotmail.com

Shoalhaven Heads Surf Life Saving Club
Mackintosh Street Shoalhaven Heads
www.headssurf.com.au Facebook: Shoalhaven
Heads Surf Life Saving Club. Phone:
0432 331 915 or info@headssurf.com.au

EMERGENCY 000

Police Assistance Line (non-urgent Police reports) 131 444
Berry Police 4464 2175 - Fire and Rescue NSW 4464 1008 or 000
Rural Fire Brigade (Broughton Vale) 4464 1522
SES - For Emergency help in floods and storms 132 500

Raine&Horne®

The Team at Raine & Horne Berry would like to wish you a very merry and safe Christmas!



We would like to thank our vendors, purchasers, tenants and landlords for helping to make 2018 a very successful year.



2/65 Queen Street, Berry
Tel: 02 4464 1300

Jacqui Crapp
Kimberley Clarke
Amy Jarrett
Margaret Skelton

Principal/Sales
Sales
Property Manager
Property Manager

P: 0429 104 011
P: 0418 204 518
P: 02 4464 1300
P: 02 4464 1300

ADFAS is all about the arts.

For 2019, ADFAS Shoalhaven have planned nine Thursday evening lectures and two Friday Special Interest Days. All lectures are held at the Berry School of Arts, Alexandra Street, Berry. 2019 Subscription is \$140.00 per person or visitors are welcome to individual evening lectures, \$25.00 at the door. A light supper with wine is included. There is an additional cost for Special Interest Days.

7 Feb 7.30 pm	Jennifer Bowker	The Tentmakers of Old Cairo
28 Feb 7.30 pm	Jacqueline Cockburn	Auguste Rodin and the Gates of Hell
28 Mar 7.30 pm	Sylvia Sagona	Acquired Taste: The Invention of the Restaurant in 19th Century Paris
2 May 7.30 pm	Bernard Allan	Laura Knight: From Newlyn to Nuremberg
3 May 10.00 am	Bernard Allan	Half Interest Day – Two lectures Americans Abroad: James McNeill Whistler and John Singer Sargent Women Artists: Their Challenges, Ambitions and Achievements
6 June 7.30 pm	Robert Ketton	Speak the Speech I Pray You
4 July 7.30 pm	David Rosier	Heaven's Embroidered Cloth – The History and Development of Chinese Imperial Silk
5 July 10.00 am	David Rosier	Full Interest Day – Three lectures Son of Heaven, Man of the World – The Emperor Qianlong – Ultimate Renaissance Ruler and Fine Art Collector
8 Aug 7.30 pm	Andrew Prince	Jewelled Journeys – The Art of Opulent Travel
5 Sept 7.30 pm	Colin Davies	Architecture, Music and the Invention of Linear Perspective
3 Oct 7.30 pm	Anthony Russell	The Power and Glory of English Country Houses – Their Evolution and Changing Role
14 Nov 5.30 for 6.00 pm		AGM and Seasonal Celebration at the Berry Courthouse

On 7 February at 7.30 pm Jennifer Bowker will present The Tentmakers of Old Cairo. Jenny lived for four years in Cairo and worked closely with the Egyptian Tentmakers – men who do superb fine appliqué panels which were originally used for lining tents. The art is dying, and the Tentmaker's Street that had 247 skilled masters in 1979 is now down to 45. Collections are not held anywhere in Egypt, yet the work is stunning and beautiful. Jenny will talk about the history and development of the Tentmakers' appliqué.

Website: www.adfas.org.au/shoalhaven

Email: shoalhaven@adfas.org.au

Berry Men's Bowling Club

The 2018 Club Championships are close to completion. The last Championship completed was the Four which proved to be a very competitive match despite the final score of 27 to 14 which gave the title to the team skipped by Terry Hayes from the Nick Nicholls team. The Terry Hayes team consisted of Bob Dunn, Tom Froggatt and Col Good and this combination took an early lead by winning 10 of the first 12 ends played and created a lead that the Nick Nicholls team of Ken Chittick, Russell Tulloch and Peter Webb despite a late match revival could not catch. Other 2018 Championships played were Major Singles won by David Badger for the second time, Major Triples winners were Terry Bezant, Mark Power and Ben Watson, Major Pairs won by Ben Watson and Paul Bezant, Mixed Fours went to Irene Dunn, Bob Dunn, Deb Folkard and Col Good, Major/Minor Pairs went to Laurie Watson and Peter Delamont and the Minor Singles to Rob Folkard.

Recently a brochure introducing Berry Bowling Club was delivered to local residents. If you did not receive this brochure and would now like to obtain a copy, please contact President Lindsay McNamara 44641868 or Bowls Organiser David Lambert 44642332 or if you would like to attend a social bowls day which are Wednesday and Saturday afternoons then phone 0475 768 249 by noon on which ever of the above days is convenient to you. Bowling membership for the current financial year is still open and available at the very economical price of \$45.00. If you wish to try out a game of bowls or have a trial roll up membership in advance is not required.



Landcare BERRY

Apex Predators

Anyone who has been living around Berry for some years will have noticed the increase in numbers of Eastern Grey Kangaroos in the area. These beautiful marsupials are superbly adapted to the Australian climate and landscape. Their new joey's growth only proceeds if conditions are suitable. Even when they are able to successfully survive outside the pouch they can retreat if threatened. The mature animals are large and fast enough not be predated by local carnivores. This leads to exponential increasing numbers.

Thirty years ago there were virtually no Eastern Greys in the Berry area. European Primary Production including the Dairy Industry had cleared the open forest areas where the Wadi-Wadi aboriginals had hunted them. In the late 80's a wildlife park in Foxground that had been operating since the early 70's closed down. Their Eastern Greys were released into the country side, the habitat from where they had been eliminated.

Since that time they have continued to successfully breed and now mobs of 20 or so are seen on roads and farm land. Also sadly as road kill. They will continue to increase as there are no apex predators in the environment capable of feeding off them.

These conditions of run-away growth following removal of apex predators are familiar in many places around the globe. The best known example was the removal of wolves from Yellowstone followed by the explosion of the Moose population. Not as well known is that around the world there is a large increase in abandonment of marginal agricultural lands. This is leading to the attempt to "re-wild" these lands. Yellowstone has re-introduced Wolves and many areas in Europe are committed to "re-wilding". The absence of apex predators around Berry could be corrected if we humans became the predator by culling but it would be politically difficult.

WORKING BEES FOR DECEMBER 2018

Alexandra Street Parkcare: 8-10 am Friday 21st:
Gail Paton 4448 7915.

Bong Bong Road: 9-11am Sunday 9th:
Julia Woinarski 4464 2084.

Broughton Vale: 9-11am Sunday 2nd:
Kelvin Officer 0427 255 417.

Bundewallah Bushcare: 3-5pm Sunday 30th: John Clark
4464 3911.

Camp Quality: 9-11am Sunday 16th: Hugh Sheil, hugh.
sheil@realtimecom.com.au or Jeanne Highland 4464 1271.

Moeyan Hill: 3-5 pm Saturday 15th:
Bill Pigott 4464 3241 or wpigott@bigpond.net.au.

Mount Coolangatta: Nola Barker. Mobile 0409 446 418,
nolajbarker@live.com.au. Time to be advised. Meet at end
of Roxbrough Road, Far Meadow.

Mark Radium Park: 9-11am Friday 27th: Sue Selden,
sueselden@optusnet.com.au.

Princess St. Parkcare: 8-10am Monday 28th January 2019,
Terry Oades 4464 3651.

Tindalls Lane: 3-5pm Sunday 9th: Jim Jefferis 4464 2988.

Plant identification service: Please contact Harvey Blue
4464 1880 or Ian Parker, 4448 6359.

Visit our pages at: <http://www.landcare.nsw.gov.au/groups/berry-landcare> for more on Berry Landcare and late changes to working bee details.
Information can also be found on Facebook.





Berry Vet Clinic

MERRY CHRISTMAS TO YOU & YOUR PETS!

The Christmas holiday period is a great time for pets and their owners to spend extra time together. Many family's welcome new pets at this time too. Here are a few things to do for your pet this holiday period.

Eating right

Whilst celebrating Christmas and the New Year, we advise pet owners to be careful about keeping festive foods well away from animals. It's common for veterinarians to treat pets that have become ill over Christmas as a result of ingesting food that can be harmful to animals.

The most common culprits include:

- chocolate
- nutmeg
- avocados
- turkey skin, pork crackling, sausages and fatty meats
- onions and garlic
- grapes and raisins
- macadamia nuts
- dairy products, raw eggs, mushrooms, raw fish, citrus fruit, green potatoes, large quantities of tomatoes or salt.

Put a tick prevention plan in place for pets

With the warm weather now ensuring its high season for ticks, we encourage cat and dog owners to talk to us now about ways to prevent serious harm or death from toxic ticks. Ticks release a toxin when they feed, which leads to a condition known as tick paralysis. Common signs of tick paralysis include difficulty walking, changes to their barking and difficulty eating and/or breathing. If your pet is showing any of these signs contact the clinic promptly.

Has a new puppy joined your family? Sign up for our Puppy-Preschool Behaviour classes.

To give your puppy vitally important socialisation and training, and you information on vaccinations, common health issues and puppy care, please call us and chat about enrolling your pet in our puppy-preschool classes.

Summer grooming to keep cool

At Berry Vet and All Creatures Shoalhaven Heads we offer a full grooming service including brushing, bathing, fur trimming, shaving and nail clipping. Your pet will look fresh and cool for Summer and will be able to cope with the heat.



Merry Christmas and Happy New Year to our wonderful customers and their pets, from the team.

Contact us on (02) 4464 1899 to make an appointment at one of our clinics today.
Our Clinics will be open throughout the Christmas holidays (closed public holidays only).

Berry Vet Clinic

84 Queen Street
Berry NSW 2535

**Open: Mon-Friday
8am-6pm,
Sat 9am-12**

All Creatures Shoalhaven Heads

5/121 Shoalhaven Heads
Road, Shoalhaven Heads
NSW 2535

**Open: Mon-Fri 8am-5:30pm,
Sun 10am-12**

Kangaroo Valley Consulting Room

162 Moss Vale Road
Kangaroo Valley NSW 2577

Open: Tue-Thu 2-4pm

All Creatures Mobile Vet

Personalised Veterinary care
at home

**By appointment
www.allcreaturesmobilevet.com.au**

Ph: (02) 4464 1899 Email: info@berryvet.com.au Web: www.berryvet.com.au
House calls at no extra charge and 24 Hour emergency service available



ST. LUKE'S ANGLICAN CHURCH

From God With Love

Christmas cards are one of those customs we both love and hate. We hate it when you can't read the handwriting. Who is it from? How can you reply? We hate the cards that don't say anything. "To Bob and Jenny with love from Ian and Chris." What has happened to them and how do they feel about you? We hate the form cards containing long impersonal letters. One form letter said: "Don't think that this is an impersonal form letter. Our computer has personally copied this letter to you!" Yet we love to get news about friends we haven't seen for a while. Christmas cards do help us keep in touch. Christmas cards are a great tradition. They remind us that God took the initiative to communicate with us at that first Christmas time.

The Word became flesh and made his dwelling among us. We have seen his glory, the glory of the One and Only, who came from the Father, full of grace and truth. (John 1:14)

Jesus is "the Word" of divine communication. Through Jesus, God is speaking to us. He is God's media release, the microphone through whom God will broadcast his message to the world. This is a very personal word. When God wanted to tell us the truth about himself, he didn't send us a card or phone us long distance. He came in person. God spoke to us by sending his only Son. God has

become one of us! Now this is God speaking our language in a way that we can understand. He is "the eternal Word" who became "flesh". God's message through his Son is one of mercy and love.

When God looked at us and the world in which we live he knew that we need to be rescued from all the consequences of our own failures and weaknesses. That is why he sent his Son. Through Jesus God offers forgiveness to a people who are lost in their sin and eternal life to those who live in fear of death.

When we write to other people we expect a reply. That is how communication works and relationships develop. Christmas reminds us that God has taken the initiative to communicate with us. It is a personal, reliable, unmistakable message of grace and love. Don't you think it deserves a reply?

Stephen Fifer



www.berry.anglican.asn.au

www.facebook.com/BerryAnglican



MERRY Christmas & HAPPY new year

Thank you to everyone who has supported Boomerang Bags Berry! it is a joy to reflect that our volunteer group has gone from strength to strength during the past twelve months: so much so that we have been able to donate money to Landcare and to the Salt Ministries in Bomaderry to help the needy. Thank you to everyone who has made bags and to those of you who have bought them.

Please come and say hello to us at the:

**Berry Merry
Christmas Farmers' Market
From 3.00 – 6.00pm
Thursday, 13th December**

We will have a selection of bags available for purchase including Christmassy ones that will be great for gift-giving or gift wrapping.

**Enquiries: Katrina Underwood
0416 181 543**



**ZONTA
INTERNATIONAL**

EMPOWERING WOMEN
THROUGH SERVICE & ADVOCACY

ZONTA SAYS NO

JOIN THE CAMPAIGN TO END VIOLENCE AGAINST WOMEN

WE SAY A SAD FAREWELL

to our dear Margot Claringbold who passed away suddenly. A Charter Member and former President, Margot was a popular and well-loved member, and a passionate upholder of the principles of Zonta.

At her Memorial service her partner, John Scullion, gave a moving and very personal account of her life - one more adventurous than any of us had known about. Margot will be so missed by all members, not only for her commitment to the club but also for her habit of bringing some levity to the meetings with her joke telling. Farewell, dear friend, and thank you for being 'you'.

COMMUNITY CONTRIBUTION

The Club's thanks go to the 'many hands making light work' at the recent Birthing Kit assembly day. With enthusiasm, a total of 1,400 kits were packed ready for despatch

DECEMBER 2018

- bringing the total of all kits made by the Club to 20,000! We are very proud of this achievement, which could not have been realised without enormous community support. A great joint effort.

16 DAYS OF ACTIVISM

Each year, from the 25th November (International Day for the Elimination of Violence against Women) to the 10th December (Human Rights Day), Zonta clubs around the world will campaign to help eliminate one of the world's most persistent violations of human rights - violence against women.

No Abuse -

No Excuse

Not Violent -

Not Silent!!!

www.berryalliance.org.au

NEXT YEAR

Our November meeting will give us all a chance to reflect on the past year and celebrate achievements made by the Club - so a party is in order!

We'll be back in business on Tuesday, January 24th, 2019 and we invite anyone interested in the Club's activities to join us.

Dinner meeting will be held at the Coachhouse Restaurant, Hotel Berry, 6.30 for 7pm. Please book with Rosemary Courtney on 0430 359 443.

A FINAL THANKYOU

To all supporters of the Club we say a Big Thank You for your interest in our activities over the past year, and we wish you all a Merry Christmas and a Happy New Year.



AND LIKE US ON FACEBOOK!

The Town Crier - Page 23



140 Queen St
Berry Ph:4464 2995
www.berrybowling.com.au
f : Berry Bowling Club

Berry Fishing Club
Ham Raffles

Thursday 15 th Nov	10 Half Hams
Thursday 22 nd Nov	10 Half Hams
Thursday 29 th Nov	10 Half Hams
Thursday 6 th Dec	10 Half Hams
Thursday 13 th Dec	10 Half Hams

Mega Raffle

Thursday 20 th Dec	10 Half Hams
	10 Turkeys
	10 Meat Trays
	4 Vouchers
	5 Chicken & Veggie Trays

Berry Bowling Club
Ham Raffles

Friday 30 th Nov	20 Half Hams
Friday 7 th Dec	20 Half Hams
Friday 14 th Dec	40 Half Hams
Friday 21 st Dec	20 Half Hams



*Consider Berry Bowling Club
for your next Special Event*



raffles!

Every Thursday, Friday, Saturday & Sunday

Drawn Thursday 7.15 Fri, Sat, Sun at 7.30

Free Trivia on Sunday

See Bar Staff For Details

Berry Bowling Club

CHINESE
RESTAURANT

Lunch & Dinner - Wednesday to Sunday

Ph 4464 2388



Healing Through The Natural Environment

A "Taste of Paradise Organic Farm" is a Berry based charity whose primary focus is to support disadvantaged and at-risk young people. One of the farm's founders, Tim Francis, has been actively engaged with the local Aboriginal community for many years. Organisations such as the Illawarra Aboriginal Service and Warrigal employment have referred Indigenous youth (with complicated emotional and developmental challenges) to the farm for support.

In consultation with Tim, psychologists and therapists from the South Coast Medical Aboriginal Service Corporation have developed the "Farming for Calm" Assisted Animal Therapy (AAT) program. AAT is a therapy that involves animals as a form of treatment. The goal of AAT is to improve a person's social, emotional or cognitive functioning and is particularly effective in assisting people with disabilities such as autism. "A lot of the Indigenous children and youth enrolled in our programs have experienced traumatic events and the farm experience has been able to alleviate some of the effects of this trauma" Tim says.

Aboriginal mentors form a valuable part of the "Taste of Paradise" Team. These

passionate workers add another layer to the programmes on offer at the farm by providing cultural education skills. For example, an Indigenous mentor is currently working on a rock painting project with a young Aboriginal boy. Activities such as these, assist in reinforcing cultural identity and a connection with country. "Our Indigenous mentors bring a deep understanding of their aboriginal heritage which helps us enormously when engaging with Indigenous kids on the farm" says Tim.

Aboriginal community members have been working alongside Tim, helping Indigenous youth connect with their culture via the natural environment. The kids participating in the farm's horticultural programs have been assisting with planting and propagating bush tucker plants such as Lemon Myrtle, Lilly Pilly, Illawarra Plum Pine, Macadamia nut trees, and Wattle seed. These native plant species have been used by Indigenous peoples for generations for bush tucker as well as traditional medicine.

Working with, and supporting the Aboriginal community to preserve important elements of the natural environment continues to be one of Tim's passions. This passion has

developed over the years to incorporate specific programs to help Indigenous youth re-connect with their culture, engage with the natural environment and heal some of their suffering and trauma.

A Taste of Paradise is a not for profit charity. Donations are the lifeblood of the organisation. Please go online to www.atasteofparadise.org.au give today and help us continue our work. All donations are tax deductible. Open Days are held the first Tuesday of every month between 10-12 (Excluding school holidays). Please ring our Administration Volunteer on 0490 060 251 to book.



ARTICLE PROUDLY SPONSORED BY THE BERRY ALLIANCE.

 AND LIKE US ON FACEBOOK!



BEAUMONT RURAL FIRE BRIGADE

beaumontvrfb@gmail.com



ALERT! Beaumont Rural Fire Brigade needs new members NOW.

Due to some of our committed members leaving the area, we are very thin on the ground and urgently need new active members. We are seeking keen and committed people to train as firefighters. You don't need any special skills because as a member you'll get specialist training within a small, friendly group.

Beaumont Rural Fire Brigade is the first response emergency service to incidents in the Berry Mountain and Cambewarra Mountain areas. The Beaumont Brigade is made up of community members just like you – ordinary people who live on the mountain and volunteer some of their precious time. We provide an emergency service that can respond to fire and other incidents in times of need.

This is a community organisation, operated by the community, for the community, but we can't continue to do it without new members. We all lead busy lives, but with more hands on deck we can spread the load. This is an opportunity to make a valuable contribution to your own safety and that of your community.

If you'd like to have a chat with one of our members call Captain Dave Macquart (0402 121 102) or Gary Goddard (0418 442 449). Please don't delay, we need your help now.



YOUR STORAGE SOLUTION

1st MONTH FREE

2nd Month 1/2 Price* - Call Now
Individually Alarmed Units | 7 Days/Week Access

OPENING SPECIALS

- Packing Supplies
- Climate Control Wine Storage
- Commercial and Residential
- **FREE** move in trailer
- Solar Powered with TESLA Battery Storage

NEW Trade Units Available

Customised to your lighting and power needs
Call now to secure yours today
FREE Goods despatch and retrieval service

*TERMS AND CONDITIONS APPLY

**ACCESS
STORAGE**



Phone our friendly team on 4422 1955
or visit our website www.accessstorage.com.au

Access Storage - Cnr Meroo Rd and Victa Way Bomaderry

the
power of
humanity



100 YEARS
PEOPLE HELPING PEOPLE
1914-2014

**BECOMING A MEMBER
OR VOLUNTEERING**

BIG CAKE BAKE AND INDONESIAN EARTHQUAKE

The October Big Cake Bake and Indonesian Earthquake/Tsunami appeal couldn't be held at the October markets as usual due to wet weather. We therefore collected in Queen Street and despite the cold we raised over \$850. Thank you to all members of the community who donated.

The Big Cake Bake is one of two annual fundraisers organised by Red Cross to raise money for their everyday expenses as against other appeals that are for a specific emergency. The everyday funds are used for expenses such as local community services, helping in crises in Australia and other countries or delivering clean water supplies to communities that do not have it. This particular collection was for the general funds but also for helping those affected by the Indonesian Earthquake.

BERRY SHOW

We will be having a stall at the Berry Show again so come along and find out about the services delivered by Red Cross. We will be especially highlighting the Partners in Recovery Programme and Trauma Teddies. You may wish to help with these programs.

Also we will be able to show you how to prepare yourself for fire. We can give a list of things to put in your own REDiKit so you are prepared in case you need to evacuate. These were also detailed in the article in the October Town Crier. This summer is predicted to be one of high fire danger.

If you wish to find out about becoming involved with or volunteering with the Red Cross contact the Berry Branch of the Red Cross (see Community Groups page of Town Crier for contact details), the Nowra Red Cross Office (1800621433) in Graham St Nowra or go onto the Red Cross website.

REMEMBRANCE DAY SERVICE

Berry Red Cross attended the Remembrance Day Service at the Berry Cenotaph on Sunday 11th November and laid a wreath.

TWIDDLEMUFFS

Some knitting wool has been donated to Red Cross. It will be distributed to our local knitters for Trauma Teddies and Twiddle Muffs.

Our thanks to all who knit these two very popular items. We especially thank Lynne Croker's sister, visiting from Dubbo who has donated a large number of Twiddle Muffs she has knitted.

We would welcome any volunteers who would like to help with this task.

CHRISTMAS

Once again Christmas is upon us and as usual Berry Red Cross will donate a hamper to Berry Public School to be given to a family. We also donate to the School library the Guinness Book of Records and a book about animals.



The Berry Evening VIEW Club meets at the Berry Bowling Club on the third Wednesday of the month 6.30 for 7 pm start but it doesn't matter if you are a little early as you can have an extra catch up with friends. Now if you want to book in or cancelled do so by ringing Jan on 44642181 before 12 noon on the Sunday before the Wednesday of the meeting. If you are on the permanent list you don't have to book in. This coming month, Coffee Thursday will be at the Milk Bar near the Treat Factory at 10 am. Ok you know the drill by now only the coffee places move from time to time. Well, we move - not the coffee places.

Guest Speaker coming up and the Christmas meeting will be a very tasteful night held at the United Church Little Church Hall and yes you can dress in a Christmas theme but only if you want to.

January is break time but some of us do get together at one of the local eating places and February is the all-important AGM where we may or may not need some new people on board. We of course can squeeze in new members come March so come along and learn how we help our Learning for Life children through trading tables and bingo etc.

Have a Happy Christmas and a Healthy New Year everybody!

Yolande - Publicity

DAVID BERRY HOSPITAL AUXILIARY



The David Berry Hospital Auxiliary will be holding its next street stall on Saturday 1 December, 2018 Broughton Walk adjacent to the Berry Pharmacy, commencing at 8.30 am. The ladies have been busy cooking some of the best home made cakes, slices, mini quiches and jams for your enjoyment.

One of our amazing volunteers is Judy McMillan. Judy nursed at the David Berry Hospital for many years and now cheerfully provides patients with an array of goodies from the 'lolly trolley' as well as working on the many Auxiliary initiatives such as this years Book Sale.

Thank you Berry residents and visitors for your generous support, all funds raised go directly to David Berry Hospital.

Sonja Van Hoof
Publicity Officer

DECEMBER 2018



www.berryalliance.org.au

Labor



AUSTRALIAN LABOR PARTY

"To promote equality, to involve the people of Australia in the decision-making processes of our land, and to liberate the talents and uplift the horizons of the Australian people"

GOUGH WHITLAM

JOIN. PARTICIPATE. CONTRIBUTE.

TOM KOREVAAR

SECRETARY

BERRY SHOALHAVEN HEADS
ALP BRANCH

0429 012 796

tomkorevaar@live.com.au

BERRY REMEMBRANCE DAY

100TH COMMEMORATION 2018

The Berry RSL Sub-Branch Remembrance Day Commemoration Service was observed at the Cenotaph in Alexandra Street on Sunday 11 November, and was again well attended by the Berry community including a Sydney group of motorcycle enthusiasts, in beautiful weather.

Cir John Wells as MC, introduced Mr. Ray Strong President of the sub-branch to deliver the opening address that on this day 100 years ago WWI had finally concluded. It was also the 25th anniversary of the burial of the Australian Unknown Soldier at the Australian war Memorial in Canberra.

Locally to assist the war effort, 7 nurses from the Berry Hospital joined, and Berry Red Cross was formed. A total of 37 men lost their lives by the end of hostilities, the last only in October 1918, a month before the Armistice. Like so many other little communities around Australia, Berry men performed their duties; this is shown by the names on the Honour Roll at the Cenotaph many of whom were brothers or cousins. In the bigger picture, he reflected the 1918 Australian war effort was of such significance, it was considered to have shortened the War by 6 months.

Joel Noonan of the Berry Community Church, led the service in prayer.

Berry School Captains Daniel Whittaker, Andie Robinson and Darcy Arnold recited the poem "We Shall Keep The Faith".

Berry RSL Member Able Seaman Bradley Burt, HMAS Brisbane read the tribute to the efforts of the Sackley Brothers who joined the 1st

AIF in 1916 and served together in the 3rd Battalion in France. In keeping with the times, William and James were bullock drivers and Edward a bush labourer.

Regt No 5176 PTE William John Sackley lost his life, killed in action (KIA), at Hermies during the Battle for Arras, and is buried in the Beaumetz Cross Roads Cemetery in France. To give a picture of the ferocity, two VCs were awarded for actions on this day and 25 for the entire operation. A memorial inscription to Pte Sackley is also on the family headstone in the Dorriggo cemetery.

Lieutenant Christopher Hoban of HMAS Albatross delivered the Commemoration Address with the key note being on the sacrifice of so many servicemen and their role of the in WWI.

President Ray Strong then recited the Ode, followed by the "Sounding of The Last Post", the time being 11.00 am one minutes silence was observed for the cessation of hostilities of WWI followed by "The Rouse".

Wreaths were laid by the Sub-Branch, and local community organisations, and at completion, Piper John Morrison played "The Battle's o'er".

MC Cir John Wells recorded the RSL Sub-Branch's' appreciation for the efforts of those whose assistance had been invaluable for the Commemoration Service; RAN HMAS Albatross for providing the Cenotaph Catafalque Guard, Shoalhaven City Council, Turfco for their continued support, the Women's Auxiliary for their loyal and sustained work throughout this year, Berry Rotary for placing of chairs and Piper John Morrison.

The service then concluded with the Australian National Anthem.



TRADES & SERVICES DIRECTORY

SOCIAL MEDIA MARKETING SERVICES

- » Consultations
- » Social Media set up
- » Improve Social Media visibility and online following
- » Help you reach your online target market
- » Social media managing services
- » Social Media training

Call Lisa-Jane on 0427 716 844
FOR YOUR FREE CONSULTATION TODAY



Mary Pentecost

84 Queen Street Berry NSW 2535
email: wbpqueen84@hotmail.com

4464 2874

Mountain Echo Landscape & Horticulture

- Landscape Design & Construction
- All Aspects of Garden Maintenance
- Fruit & Veg Production
- Broad Acre Property Management

Katie 0424 236 235 Ryan 0409 743 828
contact@mountainecho.com.au

TRADES & SERVICES DIRECTORY

Canine Cardio

Dog Walking & Animal Home Care

Dog Walking | Pet Minding | Doggy Daycare | Overnight Stays

Annette Brooker

0418 427 438

info@caninecardio-homework.com.au
www.caninecardio-homework.com.au



Television Antennas SHOALHAVEN ANTENNAS

Servicing Berry and surrounding areas.

- Digital Upgrades
- New Installs
- TV Tuning
- Repair existing systems
- Add Phone/TV Outlets



Ph: 0410 526 672 Paul 0424 243 005
Fax: 02 4422 6672

WINDOW
& GUTTER
CLEANING
HOUSE
WASHING

CALL JAMIE
FOR FREE
QUOTE

0413 582 948



PROMPT, RELIABLE SERVICE



HIGH QUALITY, THERMALLY EFFICIENT BESPOKE HOMES.

www.illawarraprecasthomes.com.au

Phone: 0409 622 175

Builders' Lic. 183068c

GETTIN' IT DONE! TREE SERVICES

TREE REMOVALS • TREE PRUNING
BLOCK CLEARING • WHOLESALE MULCH
STUMP GRINDING • CHERRY PICKER HIRE

JASON 0432 281 063
WWW.GIDTREESERVICES.COM.AU



~ Specialising in gentle, low force techniques ~

SAFE, EFFECTIVE TREATMENT FOR:

- All ages; from babies through to the elderly.
- Headaches/migraines
- Back/neck pain
- Postural problems
- Whiplash
- Scoliosis
- EFTPOS available
- HICAPS now available

57 Queen Street • Phone: 4464 3414

TANNED HIDES, BERRY NSW

TANNED HIDES

Professionally Tanned Hides available
- your hide or choose from our range

PHONE 0409 444 081

All enquiries welcome
www.tannedhides.com.au
e: sales@tannedhides.com.au

Ian's Interior Linings



★ All plasterboard & fibrous plastering

★ Commercial & Domestic

M: 0418 220 751

E: willey63@bigpond.com.au

AIS CERTIFIERS

FAST TRACK
BUILDING APPROVALS

SWIMMING POOL
COMPLIANCE CERTIFICATES

TONY LEWIS

0417 372 728 • 4421 0004

info@accreditedinspectionsservices.com.au

THE BOUTIQUE GYM

Personal Trainer Jen Miller

117 North Street,
Berry NSW 2535

☎ 0413 648 943

jenmiller65@hotmail.com



LOCAL • COUNTRY • INTERSTATE

Experience a New Level of Professionalism

Phone 04 2864 3557 or 4464 3557

Four Legged Friends PET FEEDING SERVICE

For Horses, Dogs, Cats, Birds
& all other domestic pets

Megan White
dip in animal care

0407 407 328

whitewolf99@bigpond.com

Established: 1995

• FEEDING • EXERCISING • RUGGING

• GARDEN • MAIL • GARBAGE

www.fourleggedfriends.com.au



All Creatures
Mobile Vet



- Convenient pet health checks and vaccinations
- Compassionate euthanasia at home
- Complete range of Veterinary services
- Pick up and drop off service when your pet needs to visit our hospital
- No call out fee
- Emergency service available
- Service area from Albion Park to Milton NSW

Personalised Veterinary care at home

(02) 4464 1899 www.allcreaturesmobilevet.com.au

Roof & Building Repairs

Roof Leaks

Leak Detection

Moisture Problems

0415 997 977

Info@benchmarkbuild.com.au

gerringong physiotherapy
nowra central physiotherapy
shell cove physiotherapy
kiama physiotherapy

4234 4666

www.gerringongphysio.com

TRADES & SERVICES DIRECTORY

Vaughn's Lawn & Garden Service



- Local knowledge
- Professional service
- Fully insured

0408 863 776

www.vaughnsgardening.com.au

G.M. Ellison & Co. lawyers • conveyancers

Graham Ellison LL.B.

- Real Estate & Business Conveyancing
- Wills, Probate and Personal Arrangements

5 HOST PLACE BERRY
Ph: 4464 3814 / 0408 444 808
graham@gmellisonlawyers.com.au

TERMITES!

- ▼ Pre purchase termite inspections and reports
- ▼ Termite barriers new & existing buildings, council approved
- ▼ Thermal imaging and microwave inspection tools
- ▼ Termite Baiting Systems

FREE QUOTES Call
TERMITE SOLUTIONS-
4448 5444
termite experts

Fully Licensed, Accredited & Insured
Family Business with over 20 years experience

PROPERTY MAINTENANCE HOME HANDYMAN

- Repairs and installation of doors/windows/gates and fencing
- Small extensions - decks/pergolas
- Tipper Hire
- Clean ups - rubbish removal
- 40 years' experience
- Fully licensed

Michael Barrett 0408 217 637

BERRY MAINTENANCE PLUMBING

ALL PLUMBING SERVICES
Gutters Hot Water Toilet Repairs Leaks

Paul Bramley Licence L5826

Mobile: 0438 641 046

Office: 02 4464 1312

MY CERTIFIER

BUILDING CERTIFICATION

Construction Certificates, Complying Development Certificates, PCA Services, Pool Compliance, Basix Certificates, DA Assistance & Building Consultation

Che Leonard BPB1812

0417 593 496

Email: che@mycertifier.com.au

www.mycertifier.com.au

ease
Acupuncture + Chinese medicine

Digestive health
Women's health
Injury + Pain
Stress + Anxiety

57 Queen St, Berry | 0487 858 394
www.ease-acupuncture.com

HERE IS HOW TO GET THE BEST KITCHEN,
VANITY, FURNITURE, TIMBER WINDOWS,
DOORS, FLYSCREENS AND JOINERY

Rybrook Joinery

CALL SCOTT OR MICHAEL

4422 4600

MICHAEL HILL PAINTER & DECORATOR

Quality Work Guaranteed

Domestic Commercial Industrial

ABN 95 969 204 488 Lic No 121389C

0402474569

- Specialising In
- New/Old work
 - Feature Walls
 - Roofs
 - Texture Coating
 - Heritage

Arborist
Complete Tree Removal & Care
Reliable Professional Service

Mulch Sales
Stump Grinding
Fully Insured

Dave Kelly
0423 903 946

All aspects of professional tree care.



- ★ Domestic and Commercial Cleaning
- ★ Regular and Spring Cleaning
- ★ Presentation Cleaning
- ★ Rental Exit Cleaning
- ★ Window Cleaning

Call Rhona for a free quote: **0417 652 892**

Over 20 years' Experience ...

ELECTRICAL CONTRACTOR

EEPS
Lic. No. 133674C

DOMESTIC & COMMERCIAL

Solar Power Installation
Home Automation Systems
Security Lighting
Pools & Spas
Hot Water Systems
Oven & Stove Repairs
Safety Switches
Smoke Detectors

Contact peter today!

0412 594 907 | 4464 1993

ENDEAVOUR ENERGY AUTHORISED LEVEL 2 SERVICE PROVIDER



JET LOCKSMITHS & SECURITY

Automotive | **Residential**
Commercial | **Industrial**

MOBILE 24/7 LOCKSMITH SERVICE
0498 770 088

www.jetlocksmiths.com.au

Master Locksmith | Security Lic #000101098

Gerringong Painting Service

Lic: 186465C

- New & Repaints
- Interior & Exterior
- Small Jobs Welcome
- 30 Years Trades Experience



GREG DENT 0438 637 141



MISS SPARKLES
SHOALHAVEN
External House Cleaning
HOUSES FROM \$148

- ★ Environmentally Friendly
- ★ House/Driveway Packages
- ★ Removal of Cobwebs
- ★ Patios and Driveways
- ★ Mildew Treatment
- ★ Windows/Screens included
- ★ Commercial work
- ★ Seniors Discount

Phone Dennis for a free quote:
0407 642 256

Now Offering: Internal Window Cleaning &
Licensed/Insured Electrical Work (Lic No. 209514C)

TRADES & SERVICES DIRECTORY

CKB CIVIL

All Earthworks
Landscaping
Driveways
Rural Roads



Charlie 0418 429 740
charlie@ckbcivil.com.au

Lic 244729c

MARK FOX TILING

- Floor Screeds • Waterproofing
- All interior and exterior wall and floor tiling

Pool water lines and complete pools
With over 25 years' experience
in the construction industry I have the solution
to all your tiling needs.

Call **0481 297 087**
FOR YOUR FREE QUOTE TODAY
Licence No 304070C



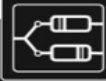
SCHOON PLUMBING

Plumbing-Drainage-Gasfitting
Roofing-Guttering
schoonplumbing@hotmail.com

Mini Excavator Hire
New Homes-Renovations
Tindalls Lane Broughton Nsw 2535

Call Today!

0419624011



Computer Troubleshooters

TECHNOLOGY SOLVED

- Residential or Business we come to you.
- Hardware and software repairs and sales.
- Networking solutions.
- Over 20 years' experience.

0422 227 456
www.ctsnowra.com.au

LOCAL SERVICE – GLOBAL STRENGTH

Glynn's Carpentry

— YOUR HOME IS IN GOOD HANDS —

Maintenance, Repair & Renovation Specialist

"I can help with those odd little jobs that
never seem to get fixed or a bigger project
like a new kitchen or bathroom"

Lic # 218008C

For a friendly free quote - Glynn 0423 384 072



ROB PACKER POND & DAM CARE

- Algae & weed control
- Pumps & filtration
- Fish & plants
- Maintenance & repairs

0409 550 741



Local Plumber
Fast & Reliable 24/7

1300 792 082

www.curranplumbing.com.au

10% OFF
IF YOU
MENTION
THIS AD



Southern Tree Service

- Qualified Arborist
- Qualified Horticulturist
- Tree care and maintenance
- Expert trimming and tree removal in confined areas
- Chipper • Mulch
- Advice on replacments
- Stump Grinding
- Fully Insured

Paul Gillen

Ph/Fax 4464 2822 • Mobile 0407 405 968

JASON COX

LICENSED REAL ESTATE AGENT

0429 949 900
jason.cox@oneagency.com.au
Shop 6, 90-92 Queen Street
Berry NSW 2535
02 4407 5000
Shop 2, 160 Moss Vale Road
Kangaroo Valley NSW 2577
02 4465 1996
www.oneagency.com.au

ONE AGENCY
COUNTRY LIVING

WALLED GARDENS

Kangaroo Valley Berry Bowral Wildes Meadow

garden maintenance
garden design
installation

Joshua Wall
02 8999 1408
04 2357 8716

hello@walledgardens.com.au

www.walledgardens.com.au



SOUTH COAST
COLOUR
of Berry

Colour Consultancy

Interior Decoration

Luxury Lighting

Asha Ardill 0423 820 370 asha@southcoastcolour.com.au
www.southcoastcolour.com.au

RBS rural bitumen services pty ltd

Specializing in Private Road Construction
& Bitumen Seal

- Driveways
- Carparks
- Decorative driveways
- Fully Insured

Contact Office (02) 4464 1555

James 0416 269 744

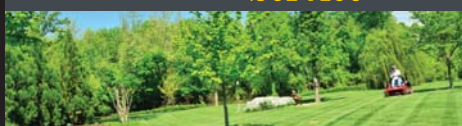


CHRIS MANN 0431 671 475
mmbuildingandconstruction@gmail.com

NEW HOMES | RENOVATIONS | EXTENSIONS | DECKS-PERGOLAS | CONCRETING

ABN 40 624 149 506 LIC. NO. 292587C

Barrys Mowing & Maintenance Service



RESIDENTIAL & SMALL ACRES | BERRY & SURROUNDS

Fully Insured | Call for a Free Quote

0409 929 534

South Coast Gutter Wiz

GUTTERS BLOCKED?

Our safe, affordable & mess-free vacuum gutter cleaning service is now available in your area! Keep your home free from debris & bushfire safe. Pressure Cleaning service also available.

Call for a free quote today....

Your vacuum gutter cleaning expert

Phone Garry 0401 492 220



ESTABLISHED 1863

BERRY HOTEL

Management and Staff
wish you and yours a

Merry Christmas and a
Happy and **safe New Year!**

*Open everyday over Festive Season & New Year
(except Christmas Day)*

*Mon-Sat: Lunch 11.30am-2.30pm Dinner 6.00pm-9.00pm
Sunday: Lunch 11.30am-5.00pm Dinner 5.30pm-8.30pm*

PUB NEWS



Congratulations:
Glenn and Crystal
on the birth of
Philip Clifford
Brandon

Congratulations:
Newlyweds
Luke and Belle
Bramley



LIVE MUSIC LINEUP

WOODY Saturday 1st & 22nd
December

BONNE VILLAINS

Rockabilly Party

Saturday 15th
December

every FRIDAY night tickets ON SALE 5.30pm-7.30pm

CASH JACKPOT RAFFLE



\$5,000!!!
at time of print

Supporting
Berry Shoalhaven Heads Cricket and
Senior Rugby League Clubs
LTPM/18/03318



**NZ's latest
craft brewery
pouring now!**

120 Queen Street, BERRY www.berryhotel.com.au
p. 02 4464 2294 f. 02 4464 2142 e. info@berryhotel.com.au



facebook.com/TheBerryHotel



[@theberryhotel](https://twitter.com/theberryhotel)



Smartphone App

TAB

Restaurants . Functions . Accommodation . Live Music

RESPONSIBLE SERVICE OF ALCOHOL AND GAMBLING

OFF-STREET PARKING FOR PATRONS AT THE REAR OF THE HOTEL

