

Keeping Berry Informed



BERRY TOWN CRIER

PO BOX 202 BERRY NSW 2535

WWW.BERRYALLIANCE.ORG.AU

 FIND US ON FACEBOOK

NOVEMBER 2018 PRICE: \$3.00

Page 19 **BERRY MEALS
ON WHEELS
COULD USE
YOUR HELP**

Page 13 **THE SUSTAINABILITY
REFERENCE GUIDE
HAS BEEN UPDATED
WITH NEW DATES AND
WORKSHOPS**

**THE MEN'S SHED
GARAGE SALE IS
ON SATURDAY 3
NOVEMBER**

The perfect place to pick
up your Christmas presents.

**VOLUNTEERING
IN BERRY**

**PLANS FOR
THE NEW
PARK IN TOWN**

**BERRY RIDING CLUB'S
PINK RIBBON FESTIVAL
IS HAPPENING
THIS MONTH**

Remembrance Day

**BERRY MEMORIAL PARK
ON SUNDAY 11TH NOVEMBER**

Service Commences at 10.40am

This year's commemoration marks the 100th year
of the end of WWI hostilities, a war that claimed
more Berry local men than any other conflict.



BERRY ALLIANCE INFORMATION



The Town Crier is produced by the Berry Alliance, Inc.

The purpose of this publication is to communicate to the people of Berry about community activities and to generate a small income for the Berry Alliance to cover administrative costs and donations.

MEMBERSHIP

Membership of the Berry Alliance costs \$10 pa. It aims to share information amongst community groups and individuals, and to ensure that Berry continues to be a community we are proud of.

Membership is open to Berry community groups and individuals.

To join the Berry Alliance, write to

PO Box 202, Berry NSW 2535

ALL BERRY ALLIANCE ENQUIRIES

Secretary: 0449 569 059

Email: info@berryalliance.org.au

Post Office Box 202

Berry NSW 2535

Editor's Note



The closing date for our December issue will be Wednesday 14 NOVEMBER at 5pm. Please submit prior to this date if it is your first submission. Material can be submitted via e-mail to: towncrier@berryalliance.org.au. Phone 0428 037 572. Town Criers can be downloaded for free from www.berryalliance.org.au or our Facebook Page: Berry Town Crier.

Nancy Davies - Berry Town Crier

TOWN CRIER EDITORIAL BOARD

Nancy Davies Rick Gainford
Holly Landgren Adrian Bishop

Contributors are those from the Berry community who have news or views relating to residents of the area. The opinions expressed in the Town Crier are not necessarily those of the Berry Alliance or the Editor. The Town Crier is published every month, with a circulation of 2400.

PRINTED BY **Berry Printers**
CONCORDE WAY BOMADERRY PH: 4422 3774
PRINTED ON RECYCLED PAPER



Find us on:
facebook



ZONTA
INTERNATIONAL

EMPOWERING WOMEN
THROUGH SERVICE & ADVOCACY

ZONTA SAYS NO

JOIN THE CAMPAIGN TO END VIOLENCE AGAINST WOMEN

SUCH AN ARTY NIGHT!

Yes, the annual Zonta Trivia Night, themed The World of Art, was another triumph for the Club. As usual, the community rose to the occasion, frocked up artistically, and helped raise funds. Gauguin, Frida Kahlo, Magritte, Andy Warhol, Renoir, van Gogh, Marcel Marceau all put in an appearance, to add some culture and join in the fun. Generous donations from the community were sold off at a lively auction, conducted with flair by one of our members, and some brain teasing activities kept everyone on their collective toes. We thank all who attended and added generously to our funds.



THE LUNCHEON OF THE
BOATING PARTY-APOLOGIES
TO RENOIR

FUNDS HELP ...

Birthing Kits, those little bundles for which the Club raises funds, and then assembles, need many hands to help. On Saturday, 10 November at 9.30am, community members will be most welcome to join us at the Uniting Church Hall. No experience necessary, (a plate of morning tea would be appreciated). It's a day of 'joining in the fun', families and all. The kits are sent to developing countries where women lack the most basic facilities to ensure a safe, clean birth. This project started in 2011, and our next assembly day will bring the total number of packs made to 20,000. Please give some thought to this appeal - register (for insurance purposes) with Mary Seelis on 4464 1191.

IT'S NOT ALL HARD WORK

Everyone has a birthday, and Zonta members cut cake and celebrated our 17th birthday in September, with much rejoicing and pride in our achievements. The name of Zonta is now almost a household name in Berry, and we constantly receive congratulations from the community for our work.

ACTUALLY, SOMETIMES IT IS HARD WORK ...

An ongoing project of the Club is fighting domestic violence in the community. November will see a concerted effort by both the White Ribbon movement and Zonta to draw attention to this distressing situation. Watch out for the '16 Days of Activism' promoting awareness ... Don't Support it, Report it!! There is a Domestic Violence Hotline to call - For help 1800 656 463.

TIME OFF

Our last meeting will be our Christmas party in November, and we will re-convene in January with our usual monthly dinner meeting. The Club warmly welcomes anyone interested in learning about the world of Zonta. Please call Rosemary Courtney on 0430 359 443 to make a booking for Tuesday, 22nd January, 2019. Usual venue is the cosy Coachhouse Restaurant, Hotel Berry. Help make the new year a bumper Zonta one!!



COFFEE AND Friends

Our guest speaker on 28th November at 10am, is Berry resident Pam Arnold. In 2014, while on Long Service Leave, Pam completed a trek from France, across the Pyrenees and into Spain walking the "pilgrims way" or the Camino de Santiago. She will talk about her experiences and the many people she met. Then in 2019, Pam is going to load up her backpack again and take part with 18 others, in a special fundraiser for UNICEF. This time she will walk from Sarria in Spain to Santiago, raising funds specifically for children in places affected by war or natural disasters.

This will be our final Coffee and Friends for the year. We shall return in February 2019.

Please come along for a great morning. Everyone is welcome!

The venue is Wesley Hall at the Uniting Church, 77 Albert Street.

Berry Community Library

We are promoting our detective, mystery and suspense books in October and November. There is a display of some popular authors such as Michael Robotham, Jane Harper, Candice Fox, Michael Connelly, Donna Leon, Kate Atkinson and lots more. Come on down to the Community Library and try reading a new author.

The "Third Wednesday Book Group" will meet in the Community Library on the 21st November from 4 - 5.30pm. This will be our final meeting for the year, but we'll be back in February 2019.

» LIBRARY OPENING HOURS

Monday and Wednesday 1-4pm
Tuesday, Thursday and
Friday 10-1pm

77 ALBERT STREET,
OPPOSITE THE
IGA CARPARK,
BEHIND THE UNITING CHURCH.

FOR MORE INFORMATION CONTACT
JANET ON 0425 220 258

FIND US ON FACEBOOK



MEET SOME OF OUR TOWN'S VOLUNTEERS

On a glorious September morning, local community groups got together in the gardens of the Berry Courthouse to showcase what they do and extend an open invitation to anyone who wanted to participate. This was the first time the Berry Alliance (who operate the Town Crier) had organised an event like this. In years past, we'd put on a spread for the local community groups to discuss their organisation and its needs with other groups and collectively we would look at ways to connect with the resources available in our town. Often, the Town Crier was the driving force in assisting groups with promotion of various upcoming fundraising events. This event was a direct response to the last meeting

we held, in which it became sadly apparent that there was a shortage of volunteers to continue the efforts of these groups. After some head-scratching, the Alliance decided it would be a good idea to give these community groups another platform that wasn't the Town Crier. A day and appropriate venue selected, and the call put out to groups and individuals than a Volunteer Expo would go ahead. The Berry Alliance is incredibly grateful to the groups who turned up on the day. We were delighted to see the effort and love that each group put in to their displays. Each and every one of these volunteers showed up ready to open up to anyone who was willing to listen

about their roles; what their group does and who it benefits. With room for growth, the Berry Alliance hope to be able to make this an annual event.

Below are just some of the photos of the groups and individuals that keep this thriving little town humming with activity all year long. If you are interested in joining any of the community groups below, or one of the many other groups in town, check the contact information on page 16 and 17 of the Town Crier to find out how you can join in and be a part of all this great work.



ADFAS



BERRY & DISTRICT GARDEN CLUB



BERRY MENS SHED



BERRY TENNIS CLUB



BERRY LANDCARE



BERRY ETHICS SOCIETY



BERRY SPINNERS AND WEAVERS



BERRY ROTARY CLUB



AUSTRALIAN RED CROSS



BERRY MASONIC VILLAGE AUXILIARY



BERRY PLAYGROUP



DAVID BERRY HOSPITAL AUXILIARY

Volunteer of the month: Marilyn Kellett of the Berry Masonic Village Auxiliary

Marilyn has been volunteering for the Berry Masonic Village Auxiliary for a number of years.

Part of her role includes facilitating Manicures for the Ladies of the Berry Masonic Village. This is something Marilyn does every 1st and 3rd Friday of each month. There are 4 volunteers in total: Sandra, Jan, Loreen and Marilyn.

This is a lovely service that started back in 1997 with Marilyn, Flo and Edna where they would also do makeup. However, this upset some of the ladies who didn't like having their own make up taken off and having new make-up put on so now the volunteers only focus on fingernails and hand rubs.

Marilyn started back then under the banner of Red Cross, but they stepped down about 8 years ago so now volunteers under the banner Berry Masonic Village Auxiliary.

Marilyn:

'We do the ladies' nails by filing, then painting but of course talking all the time. What lovely mornings we and the residents have together. We always have plenty of laughter on these great mornings.

Many ladies over the years have been so pleased to have this service. One lady even stated, after having her nails done, that she now needed a man to kiss her hand!

The benefit of this role is the JOY we get and the JOY the ladies in the Village receive from this valuable service.



Manicures are not in need of new volunteers yet, but the Berry Masonic Village Auxiliary run the KIOSK in the village and could always do with a helping hand.

In addition, if there was someone who could drive the bus, we would love to have someone help take the residents out for a cuppa or lunch from time to time.



Marilyn and Sandra with the residents of Berry Masonic Village

Berry Masonic Village Auxiliary Inc | 4464 1774 | 42 Albany Street Berry NSW 2535
3RD WEDNESDAY MONTHLY 9.30am in Activity Hall, Albany Lane Berry Masonic Village



Bluewaters Dental Care

Smartbleach 3LT:

1. Fastest (27min with single application of gel) in Chair system → Less patient involvement/annoyance
2. Most comfortable (No heat from the light hence no chance of heat related sensitivity)
3. Safer preserving the protection layer of the teeth.
5. Longer lasting
6. Natural looking and most consistent in results (No bounce back or blotchy/chalky looks).

PROMOTION

- TEETH WHITENING WITH COMPLIMENTARY CONSULTATION
- SMILE MAKEOVERS
- MUSCLE RELAXANTS



PACKAGES AVAILABLE - Please feel free to discuss with our Dentist.

Call us on **02 42344880** to book your Appointment | Visit us on Facebook | www.bluewatersdentalcare.com.au



BERRY CHAMBER OF
COMMERCE & TOURISM



**Australian
Institute of
Architects**

The Australian Institute of Architects will be holding a seminar on Friday the 23rd of November at the Berry School of Arts titled, 'The Changing Face of Regional Country Towns - Berry 2050'.

Doors are open to all residents at 1.30pm for an information session on the Draft Urban Design for Regional NSW released by the office of the NSW Government architect and a presentation by Shoalhaven City Council strategic planner Gordon Clark on current planning schemes and how the regional urban design framework will affect Berry.

At 2.15 pm a Q&A session involving seminar guests, council reps and community leaders nominated by the Chamber of Commerce will discuss the concept 'Berry in 2050'.

The discussion will consider future planning needs of Berry, including new social / sport and recreation infrastructure required for the community in 2050, population growth and its impact on amenity, climate change and post bypass opportunities for the town.

It will be a unique opportunity for the Berry community to ask questions, consider future needs and how to achieve them.

The Berry Chamber of Commerce and Tourism is putting together a list of questions from which a short list will be presented to the seminar. Please send in any questions you would like included to berrychamber@gmail.com.

We look forward to seeing you there, 1.30pm Friday the 23rd of November at The School of Arts.



Berry Mens Shed Annual Garage Sale

146 North Street Berry 8.00am Saturday 3rd November

100's of items covering a wide variety of goods
ideal for Christmas and all other occasions

EVERYTHING MUST GO

Bring your money with you!



FIND US ON FACEBOOK



**'Proclaiming Christ,
serving the community
with love'**

Berry Uniting Church

77 Albert Street Berry

P: 4464 2904

E: berryuniting@gmail.com

Sunday Celebrations: 9.30am

Groups & Activities:

- Bible Study Groups
- Fellowship Groups • Prayer Groups
- Social Craft Group
- Computers for Seniors
- Berry Apple Users Group
- Coffee and Friends
- Berry Community Library

www.berryuniting.org

THE BERRY COOL ESTATE



TURN AT THE FIRE ENGINE & T – REX

16 COOLANGATTA ROAD - BERRY / COOLANGATTA NSW 2535



BERRY COOL NURSERY

RETAIL NURSERY AND PRODUCTS

PRE-LOVED – VINTAGE – RETRO WARES AND GIFTS

CALL KIMMY - 0491 488 355

THE LAZY GARDENER TOO

LANDSCAPE SUPPLIES

SOIL – COMPOST – PEBBLES – STONES – ASSORTED MULCH

CALL GLYN - 444 88 355

CAFE

COUNTRY STYLE COOKING – CAKES - TREATS

HOME MADE ICE CREAMS – COFFEE & DEVONSHIRE TEA

CALL CHRISSY - 0455 876 064

BERRY COOL MARKETS

2ND SATURDAY OF EVERY MONTH 9am till 3pm

VARIETY MARKET STALLS AND FOOD VANS

CALL KIMMY - 0491 488 355

BERRY COOL EVENTS & STORAGE FACILITIES

SPECIAL EVENTS AND FUNCTIONS & YARD AND SHED STORAGE

CALL KIMMY - 0491 488 355



140 Queen St
Berry Ph:4464 2995
www.berrybowling.com.au
f : Berry Bowling Club



Monday 5th Nov 2018
Draw starts at 7.30 pm
Club open at 4pm
\$1 a Ticket

Including the Guest panel

Huge prize pool
Estimated \$10'000 +

Melbourne Cup



Tuesday 6th November 2018
From 7am

**All Races Live and Loud on the
BIG SCREEN**

Plus Prizes for...

- . The most stylish hat . Lucky door prizes
- . Best dressed male & Female
- . Sweeps .

**BOOK YOUR OWN
BAREFOOT BOWLS PARTY
BOOK YOUR WORK
BAREFOOT BOWLS PARTY**

- Cost \$10 per person which includes bowls hire coaching and set up
- Both BBQ's can be hired for self-catering



See the bar to make
a reservation or
Ph:4464 2995



raffles!

Every Thursday, Friday, Saturday & Sunday

Drawn Thursday 7.15 Fri, Sat, Sun at 7.30

Free Trivia on Sunday

See Bar Staff For Details



**Consider Berry Bowling Club
for your next Special Event**



Berry Bowling Club

CHINESE

RESTAURANT

Lunch & Dinner - Wednesday to Sunday

Ph 4464 2388



view

voice, interests and
education of women

Berry Evening VIEW Club - what is that you may ask. We meet at the Berry Bowling Club on the 3rd Wednesday of the month; 6.30 for a 7 pm start. You can always ring Jan if you would like to come or cancel on 44642181 by 12 noon on the Sunday before the meeting. So, what do we do? We raise money for the Smith Family and their Learning for Life Program where we help a couple of Students in Australia somewhere. We have guest speakers, fun nights, craft or other entertainment and there is always the coffee morning, first Thursday of the month at 10.30. The November get together is at The Garden. We are always thinking of new places for outings also lunches, bingo mornings etc. So, hope to see you soon and join the other new members and old members having a night out.

Yolande - Publicity

Prickly Plants Provide Protection for Small Local Birds



Orange thorn (*Citrobatus multiflorus*) and **Tree violet** (*Hymenantha dentata*) are common shrubs in the local bush area and are easy to propagate.

Prickly currant bush (*Coprosma quadrifida*) and **Tree broom heath** (*Monotoca eliptica*) are less common and have proven difficult to propagate, but the propagators continue to experiment with seeds and cuttings. These prickly plants have tiny flowers and small fruits which are attractive to bees and other insects.

Orange thorn and **Tree violet** planted near a bird bath would encourage small birds to visit your garden.

As well as providing a protective habitat for birds to feed and nest, the prickles provide some protection for emerging seedlings from browsing animals such as wallabies.

Orange thorn is a slow growing plant to about 1 metre. It can be grown in a pot in a courtyard space or in a larger garden and can be pruned to shape.



The sticky fruit contains 2 seeds

Prickles are like fine needles



Tree violet grows more rapidly than Orange thorn. The tiny flowers with a citrus fragrance are prolific and bloom along the underside of the stem at this time of year. The shrub can be pruned to maintain a more compact habit in the garden, but, save the pruning until

after the plant has finished flowering and has set seed to provide food for birds and seed for the next generation of plants.



Flowers of the Tree Violet

Prickly currant bush grows in sheltered areas at the edge of the rainforest, preferring cooler moist shady conditions. The inconspicuous flowers are followed by small bright red edible fruits.

Tree broom heath grows closer to the coast in free draining or sandy soil. The shrub has a neat rounded shape. At the end of the small blue/green leaves there is a sharp prickle. The round red/orange fruits are more obvious than the flowers.



Fruit of the Tree Broom Heath

The volunteers would be pleased to hear if you have had success with propagating either Prickly currant bush or Tree broom heath. Maybe you would be willing to share the secrets of your propagating techniques.

THE SCHOOL NURSERY IS OPEN FROM 3.00PM -4.00PM ON THURSDAY AFTERNOONS.

COME IN FOR A VISIT ON YOUR WAY TO THE MARKETS FOR A BROWSE TO SEE WHAT IS READY FOR PLANTING NOW.



**SCOTS' PRESBYTERIAN
CHURCH, BERRY**

All Welcome!!!

Service Time: Sunday 10am

Sunday School: Sunday 10am

Minister Rev Isaac Jung - 4464 1020

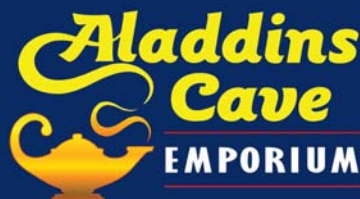
**Cnr Alexandra Street & Victoria Street
Berry**

Our purpose is to
Love God with our heart, soul, mind and might
and to
Love our neighbour as ourselves.

Ordinary people worshipping an
extraordinary God

www.berrypresbyterian church.net.au

After 18 years in Berry, Aladdins Cave / Bus Stop Furniture HAS RELOCATED TO SOUTH NOWRA



**HUGE SELECTION OF ANTIQUE, VINTAGE,
UPCYCLED AND PERIOD STYLE UNIQUE FURNITURE -
THE BIGGEST ON THE SOUTH COAST**

The same eclectic mix of wonderful furniture
pieces that we have always been renowned for.

GREAT PRICES, GREAT QUALITY ITEMS.

**Pay Us a Visit. Its Worth the Drive to 17 Investigator St, South Nowra
Open 7 Days 9.30am-5pm**

**DON'T PAY NEW PRICES, UNTIL YOU'VE VISITED US FIRST:
DOUBLE THE QUALITY; HALF THE PRICE.**

**Aladdins
Cave EMPORIUM**

0403 272 543 E: aladdinscaveemporium@gmail.com

"You Never Know What You'll Find"





Berry Vet Clinic

YOUR LOCAL VET

Have you ever wondered about the pathway that leads people to find their profession? To find that job that they love so much that it not a job at all?

Dr Anthony Bennett's path to his role as co-owner Veterinarian of the Berry Vet Clinic group of practices, with Dr Bryden Krebs, is certainly one that stemmed from his childhood love of his community, animals and a dream to be a Vet.

Dr Anthony Bennett (BVSc (HonsI))

Anthony grew up surrounded by animals at the family farm at Foxground and later at Depot Farm in Nowra. He had a natural affinity with farm life.



Anthony graduated as a Vet from Sydney University in 2004 with first class honours. His first job was at Berry Vet Clinic, working for Dr Geoff Scarlett and Dr Geoff Manning, enabling him to continue living on the family farm. Berry Vet Clinic was established in 1953 to

serve the community and was the first practice in the Berry region.

Anthony gravitated towards the dairy cattle, small animal medicine and surgery aspects of the clinic. In 2005, Anthony sat and passed The Australian Cattle Association pregnancy testing exam. He has since become an accredited examiner for other Vets hoping to achieve their cattle pregnancy testing qualification.

In 2008 Anthony took a half share in the practice partnering Dr Geoff Manning. Upon Geoff's retirement in 2012, Anthony was joined by Dr James Carroll and in 2018 Dr Bryden Krebs became joint partner. Over his years in practice Anthony has fostered a keen interest

in small animal surgery, in particular orthopaedics, and has completed a post-graduate course in advanced knee reconstruction in 2014. Since then Anthony has performed over 50 successful TTA surgeries.

Anthony has undertaken advanced continuing education in equine medicine through the University of Liverpool in the UK. He has also undertaken extensive training in equine dentistry.

In 2015-16, Anthony and James were seen on TV screens in Australia and across the world in the highly successful Foxtel production of Village Vets Australia. During this period, two very popular books were published.



Anthony lives on his farm on the outskirts of Berry with his beloved pets - Ridgeback Pride, gorgeous Doberman puppy Margo and a cheeky ginger cat called Ninja. His passion for his job is as strong as the day he dreamed of becoming a Vet as a young boy.



All Creatures Mobile Vet

- No call out fee
- Service area from Albion Park to Milton NSW



Contact us (02) 4464 1899 to make an appointment at one of our clinics today.

Berry Vet Clinic

84 Queen Street
Berry NSW 2535

**Open: Mon-Friday
8am-6pm,
Sat 9am-12**

All Creatures Shoalhaven Heads

5/121 Shoalhaven Heads
Road, Shoalhaven Heads
NSW 2535

**Open: Mon-Fri 8am-5:30pm,
Sun 10am-12**

Kangaroo Valley Consulting Room

162 Moss Vale Road
Kangaroo Valley NSW 2577

Open: Tue-Thu 2-4pm

All Creatures Mobile Vet

Personalised Veterinary care at home

**By appointment
www.allcreaturesmobilevet.com.au**

**Ph: (02) 4464 1899 Email: info@berryvet.com.au Web: www.berryvet.com.au
House calls at no extra charge and 24 Hour emergency service available**



Slow Food® Berry to JB

Recently members and friends enjoyed a selection of wholesome vegetarian dishes with Michelle Wright who is a Slow Food Advocate and member as well as a Naturopath. Participants cooked and tried Savoury Chickpeas in Tomato Glaze, Mixed Vegetables in Creamy Karhi Sauce, plus dahl and naan bread using besan flour. Importantly we learnt how to add good protein sources into a vegetarian diet.

Our SFb2jb committee has been busy working on several upcoming events:

In November - Members can enjoy a slow food style Greek Lunch with local free-range lamb spit cooked, plus loads of delicious vegetable dishes.

When: Saturday 10 November @ Longreach.

Come join us for a fun night with: Captain Bob's Station House Seven Jazz Band

When: Saturday 17 November @ The Red Shed Pyree

Bookings are essential: <https://trybooking.com/> - This will be one of our major fund-raising events.

December - On 9 December the annual Terra Madre (a network of food communities) Lunch is being held in Braidwood and is being organised by Slow Food Canberra, in conjunction with Shoalhaven and Saddleback convivia.

If you would like more information on our planned Calendar of Events or to JOIN then contact Jenny Crosby 0424 615 948 or Marilyn O'Dowd 0416 018 977 or email slowfoodberry2jb@gmail.com

The Berry Forum

www.berryforum.org.au

AGM Held on 11 October - In an overwhelming show of support from the community, all eleven Committee members renominating were re-elected and there was also overwhelming support for new nominees Geoff Armstrong and Lynne de Graaf.

The 2018/19 Committee is David Carter (Chair), Gail Paton (Vice Chair), Stuart Coughlan (Secretary), Laurie Watson (Treasurer), Mary Beare (Minutes Secretary), Geoff Armstrong, David Brawn, Garry Broadbridge, Margot Claringbold, John Cullity, Lynne de Graaf, James Robinson, and John Underwood. The Chairman and Treasurer's Reports for 2017/18 are available on the Forum website.

Forum Meeting Held on 11 October - 217 people attended the meeting, including Deputy Mayor Patricia White (who supervised the election of the Committee at the AGM). Topics covered included a status update on Boongaree (Berry District Park), an introduction to Stephen Dunshea who joined Council on 30 April as Director Finance, Corporate & Community Services, an explanation of planning legislation changes for Short-term Rental Accommodation (STRA) by Clr White, and a presentation by Omar Khalifa, CEO of iAccelerate, Australia's largest business start-up accelerator/incubator.

Boongaree (District Park) Status - Lilianna Hutchinson from Council provided a status update on the project and some initial cost estimates. Detailed design requirements for the Learn to Ride area have been completed and detailed designs for all other areas are due to be completed by the end of the month. Local volunteers are coordinating construction of a 'pump track'.

The Forum Committee has asked Stephen Dunshea to convene a meeting with Berry Rotary and the sporting groups to check with them that they understand and support changes made to the conceptual design that they agreed last year. (See presentation on Forum website).

Director Finance, Corporate & Community Services - Stephen Dunshea provided a brief summary of his background and experience and the areas at Council he is now responsible for. He outlined the challenges he faced and his approach to community engagement. He is currently working on a Tourism model for the Shoalhaven that should be ready to present to the Forum in January.

iAccelerate - Australia's largest business start-up accelerator/incubator - Omar explained what iAccelerate offers and how its aim is to develop new businesses and employment in the Illawarra. Based at the University of Wollongong, iAccelerate helps students (average age 42) develop ideas and networks in starting up their own businesses. The community is encouraged to become involved and is welcome to take a tour of the facility at the North Wollongong Campus (see presentation on Forum website).

Short-term Rental Accommodation - Clr. White talked about the new planning legislation to govern issues with short stay property rentals such as Airbnb and Stayz. Once the legislation has been finalised and feedback has been gathered Clr. White will discuss the outcomes and implications at a Forum Meeting. The new legislation includes a code of conduct that property owners have to abide by, a register of properties and a dispute resolution tribunal. Submissions can be made before 16 November (see link to planning information on website).

Next Forum Meeting is on 13 December 7.30pm at the School of Arts

bombo

blinds | curtains | shutters | awnings



4237 8280 www.bombo.com.au

Visit our beautiful showroom at **7 Johnson Street, Kiama Downs** (near the IGA)

WE CARRY THE FABULOUS "BLINDS BY PETER MEYER" RANGE • ALL PRODUCTS COMPLY TO CORD SAFETY LAWS



YOUR STORAGE SOLUTION

1st MONTH FREE

2nd Month 1/2 Price* - Call Now
Individually Alarmed Units | 7 Days/Week Access

OPENING SPECIALS

- Packing Supplies
- Climate Control Wine Storage
- Commercial and Residential
- **FREE** move in trailer
- Solar Powered with TESLA Battery Storage

NEW Trade Units Available

Customised to your lighting and power needs
Call now to secure yours today
FREE Goods despatch and retrieval service

*TERMS AND CONDITIONS APPLY



Phone our friendly team on 4422 1955
or visit our website www.accessstorage.com.au

Access Storage - Cnr Meroo Rd and Victa Way Bomaderry



BERRY CWA

THE YEAR
IN REVIEW

October saw the CWA's annual general meeting with the presentation of our annual reports and election of office bearers. Our newly elected Executive Officers are:

President:

Emily Boorer

Hon. Secretary:

Marie De La Torre

Hon. Treasurer:

Jenny Smith

For information contact:

President Emily Boorer 0417423018;
Secretary Marie De La Torre 0408585522 or
email us at berrycwa@gmail.com

The Berry CWA had a productive and active year supporting many local community groups including the drought relief campaign. The Garden Festival was the beginning of an event filled year with members participating in the Remembrance Day Service, the Anzac Day Service, and undertaking hospital visits to patients at the David Berry Hospital. Members have been very actively involved in community services this year; making sandwiches for the Berry Show Society; Anzac biscuits for Rotary Australia Day breakfast; answering the call for shortbread

at the Berry Celtic Festival; holding a garden party to raise funds for Medical research into Lyme disease; a Soup & Slice day for Can Assist; and street stalls – the August stall raised over \$2000 for drought relief.

The CWA craft group meets each Wednesday producing beautiful craft items that are always very popular at our stalls.

The Choir has been active in the community, participating in the Berry Merry Christmas event; entertaining at retirement villages and also found time to increase its repertoire of songs.

Our CWA members offer catering services to local community groups including Berry Conversations and the Shoalhaven Wellness Festival.

Each year the CWA studies a different country. This year it was Poland and the Berry Public School was very successful in the school competition with 55 students presenting models, books and USB sticks as their projects.

The CWA Land Cookery competition is contested at branch, group & state levels. A number of our members were successful with their cookery efforts at our last Land Cookery Day and will be completing at the group level in November as does the Berry Public School children.

To find out more about the Berry CWA Branch, all visitors are welcome at our monthly meeting held on the second Friday of each Month at 1 pm.

If you prefer a more informal way to get to know us and what we are about why not come along to our weekly craft mornings at 9 am to 12noon every Wednesday. The choir would welcome you to join in or just to listen to their singing – 9 to 10 am every Friday. All are followed by morning/afternoon tea and are held at the CWA premises 79 Victoria St Berry.

DAVID BERRY



HOSPITAL AUXILIARY

Since 1933, the United Hospital Auxiliary of NSW Inc. through 190 local branches, have been responding to the needs of health facilities throughout NSW.

David Berry Hospital provides rehabilitation and specialist palliative care for the Shoalhaven area.

Monies raised by the David Berry Hospital Auxiliary funds all kinds of services and equipment for the care and welfare of patients at David Berry Hospital.

This month we were pleased to welcome Karon Stalgis (Director Of Nursing) and Leanne Skinner (Nurse Unite Manager) of Karinya. They provided details on some of the items on the hospital 'Wish List'.

The Committee approved over \$20,000 for equipment including a wheel chair with adjustable depth, LCSU 4 suction unit and a BladderScan, cart and printer to help David Berry Hospital keep pace with advances in technology.

This month President Marilyn Kellett will be attending the State Conference to be held in Bankstown. This is an important opportunity for NSW delegates to network and share ideas.

The next street stall will be held on Saturday 1 December in Broughton Walk, adjacent to the Berry Pharmacy. Be early to buy some of the best home-baked cakes, slices and jams and other goodies.

Remember, all funds raised are used locally and donations over \$2 are tax deductible.

Your donation today may buy equipment that saves your life tomorrow.

Thank you for your support.

Sonja Van Hoof - Publicity Officer

Dancing for Joy

latin, disco, popular, exercising to music, easy community folk dances

- * increase vitality & energy
- * sharpen your brain
- * improve balance
- * have fun & make new friends

Suitable for all. No dance experience or partners needed!

Thursdays
except first one of the month

9.30 - 10.30 am

Cost: \$15

Berry Uniting Church Hall
77 Albert St

Bookings required



Contact Marilyn - Ph: 0412 244 735 E: info@marilynmartin.com.au

ADVERTISEMENT

Gareth Ward

Member for Kiama



"Working for Berry"

Can I help you?

P 4232 1082 | F 4232 3577

E kiama@parliament.nsw.gov.au

W www.garethward.net.au

A 102 Terralong Street, Kiama NSW 2533.



Authorised by Gareth Ward MP, 102 Terralong Street, Kiama NSW 2533.
This advertisement was produced using parliamentary entitlements.

Trapping Wildlife:

A recent "Who's Living on My Land?" program revealed a variety of native nocturnal animals around my property. These included two foxes, a wombat, bush rats and possums. I wished to follow this by eradicating the foxes. As my property is 5 acres the house is less than 200 metres from any boundary. Baiting not allowed. Traps I was informed are the way to go. Suitable fox traps are available free of charge from the South East Local Land Services at Scholfields Lane. My trap was a monster, the only one of their several that was in working order, the rest having been damaged by wombats. There was no charge but if damaged I would have to replace the trap. I was prepared to risk it.

Duly instructed in the art of entrapment, I set it up where I had previously photographed the foxes, baited with smelly chicken wings. Two nights of trapping caught nought but a single Common Koel. Much stressed I released the bird to get on with its cuckolding. Two more



nights - nothing. I moved the trap to an area where there were many scats of various sizes, shape and odours. To get a better understanding of the targets I borrowed a friend's night motion sensitive camera. This revealed an array of visitors climbing over and around the trap. Possibly a bush rat, some animal that looked like a fox but had a thin tail not a fox brush and strolling past, a wombat. This continued for over a week while all the while I was getting to know the Berry butcher fairly well. The only ones interested in my smelly chicken were too small or too quick to trigger the trap.

I scaled down the operation with a small cage rat trap. Success! But not a fox. Just a bush rat that was near the garbage bins. I released this beautiful soulful eyed animal well away from my property. I opened the trap door on a back road but the rat just ran under my car and disappear. Probably it now resides in my garage.

I think the fox with the thin tail is my neighbour's dog. I am returning the fox trap next week.

Berry Men's Bowling Club

A busy schedule is lined up and will for this year be to a point concluded with the Christmas/ Presentation night on 1st December which is a combined function with the Lady bowlers.

In addition to the completion of 2018 Club Championships, which are programmed to be finalised by the end of November, there will also be the closing visits for 2018 with the Currarong Bowling Club which have proved most enjoyable and beneficial to both Clubs. During this month, a visit is scheduled from both the Telarah Travelling Bowlers and the Forbes Bowling Club.

The final bowls show on SBS was presented on 7th October and this was an outstanding match of indoor singles Australian Championship which was won by Aaron Teyes who represents the Warilla Club. The previous Sunday saw the final of the Ladies indoor singles which was also a match of extremely good bowling and both the men's and the ladies final showed that bowls is very strong amongst the younger age groups.

During day light savings, social bowls play for the men will continue at 1.00 pm on both Wednesdays and Saturdays with bookings to 0425768249 by noon day of play and visitors are most welcome on both days and if necessary the loan of a set of bowls can be arranged. The Ladies will be playing of a Tuesday and Thursday. Remember that the facilities of the Berry Club are available by contact with the staff at the Club House. Bowling greens and BBQ's are available for use by groups and this includes the loan of bowls where necessary but remember that bare feet or flat soled shoes are required on the greens. See Sport section of this publication for details of those to contact regarding the Club.

WORKING BEES FOR NOVEMBER 2018

Alexandra Street Parkcare: 9-11 am
Friday 16th: Gail Paton 4448 7915.

Bong Bong Road: 9-11am Sunday 11th:
Julia Woinarski 4464 2084.

Broughton Vale: 9-11am Sunday 4th:
Kelvin Officer 0427 255 417.

Bundewallah Bushcare: 3-5pm Sunday
25th: John Clark 4464 3911.

Camp Quality: 9-11am Sunday 18th:
Hugh Sheil, hugh.sheil@realtimecom.
com.au or Jeanne Highland 4464 1271.

David Berry Hospital: 3-5pm Saturday
17th: Leslie Pigott 4464 3241.

Mount Coolangatta: Nola Barker. Mobile
0409 446 418, nolajbarker@live.com.
au. Time to be advised. Meet at end of
Roxbrough Rd, Far Meadow.

Mark Radium Park: 9-11am Friday 23rd:
Sue Selden, sueselden@optusnet.com.au

Princess St. Parkcare: 9-11am Monday
26th, Terry Oades 44643651.

Tindalls Lane: 3-5pm Sunday 11th: Jim
Jefferis 4464 2988.

**Plant identification service: Please
contact Harvey Blue 4464 1880 or Ian
Parker, 4448 6359.**

Visit our pages at: <http://www.landcare.nsw.gov.au/groups/berry-landcare> or
Facebook for more details



Berry Wildlife Corridor Forum:

At 9:30am Sunday 25th November at the Bragg-Ridge property A371 Princes Highway. Corridor Property holders and all interested are welcome to this relevant and informative get together.






Celebrate ORDER NOW FOR Christmas

*GET IN EARLY TO AVOID DISAPPOINTMENT!

TRADITIONALLY SMOKED LEG HAM
ROASTING LEGS OF PORK
ROLLED PORK LOINS
ROLLED SEASONED PORK FOREQUARTER ROASTS
FRESH CHICKEN
FROZEN TURKEY
FRESH TURKEY/FRESH DUCK
ROLLED SEASONED TURKEY BREAST
TURKEY BUFFET

ALL HAMS ARE CURED, COOKED AND SMOKED IN THE SHOP *the traditional way!*



129 QUEEN STREET BERRY PH: 4464 1063
EMAIL: berrybutchery@live.com FOLLOW US ON:  @berrybutchers

SHOALHAVEN CITY COUNCIL NEWS FROM BERRY

THE BERRY FORUM IS THE COMMUNITY CONSULTATIVE BODY

The following Development Applications and determinations have been notified during the month. They are also placed on the Community Noticeboard and posted on the Forum website www.berryforum.org.au Details of applications, including submissions, can be viewed on Council's website at www.shoalhaven.nsw.gov.au and select **DA Tracking**.

Development Applications Received		Address	Lodged
DA18/2051	New single storey dwelling	84 Parker Crescent	19-Sep
DA18/2106	Change of Use from a jewellery shop to Café	117 Queen Street	28-Sep
DA18/2112	Rural Dwelling Additions - Carport & Breezeway	109 Ben Dooley Road	2-Oct
DA18/2113	Outbuildings - Detached Workshop	12 Clarence Street	2-Oct
DA18/2115	Temp use of land as function centre – weddings & social events	171B Strongs Road	2-Oct
DA18/2133	New single storey dwelling	100 Parker Crescent	8-Oct
DA18/2141	Urban dwelling additions	50 Victoria Street	10-Oct
DA18/2164	New urban dwelling	78 Parker Crescent	16-Oct
Development Applications Determined			
DA17/2514	Change shed to tourist cabin with attached laundry	60 Borrowdale Close	5-Dec
DA18/1578	Change of use to Health Consulting Rooms and alts and addns	1 Pulman Street	28-May
DA18/1807	Single storey dwelling	105 Parker Crescent	23-Jul
DA18/1806	Single storey dwelling	17 Tressider Close	23-Jul
DA18/1848	Dwelling additions	182 Cedarvale Close	31-Jul
DA18/1902	Alterations and additions	10 Pulman Street	16-Aug

 Reference Guide 	
SUBJECT	DETAILS
Sustainability Workshops through Shoalhaven Council	Bookings are essential. Shoalhaven Council's website has links to Eventbrite for bookings. You may leave your contact details to be notified of upcoming events if bookings are full. Coming up: <ul style="list-style-type: none"> • Nov 10 Backyard Chicken Basics • Nov 13 Natural Cleaning • Nov 17 Healthy Soils for a Healthy Life • Nov 24 Beeswax Wraps (at Vincentia) • Nov 24 Japanese style fabric gift wrapping (at Vincentia)
Water restrictions	Although we have had plenty of rain recently, at the time of publication Council's Level 1 water restrictions remain in place. This means: watering gardens and lawns may only be done with by hand-held hose, or by a sprinkler/drip irrigation on a timer; no washing down of hard surfaces; cars or boats may be washed with a hand-held hose; and topping up of existing pools may be done, with the use of a timer. To preserve moisture in the soil and protect plants, mulch garden beds and water in the cooler parts of the day, before 10.00 am or after 4.00 pm. Depending on availability, free mulch is available from Berry Waste Depot.
Mattress Recycling	Mission Australia Soft Landing 1800 763 852 softlanding.com.au Berry Waste Depot \$29 fee
Fridge Buyback program	For eligible households, free collection and \$25 rebate 1800 708 401 fridgebuyback.com.au If you're not eligible for the program, the Berry Depot charges \$12 to take old fridges.
Mobile phone recycling	Drop off points for Mobile Muster at Post Offices nationally. Retail mobile phone shops, Officeworks, and Shoalhaven Council Administration centre all have recycling bins for old phones. Greener Mobile 1300 128 900 buy and recycle old phones, tablets and smart watches. The group pledge to plant a tree for every phone recycled. Berry Waste Depot also accepts old mobile phones.
Alternatives to single use coffee cups	Local cafes offering a discount when you bring your own reusable cup: Just Delicious, The Emporium Food Company, The Dairy Bar, Blue Goose Café (Gerringong), Ninety One Junction (Nowra), Zest Café & Catering (Nowra) The Cake Store (Nowra) Green Caffein is an initiative launched in August 2018 in Kiama, as a swap and go reusable cup system. Perfect for the days when you forget your own cup. Participating cafes include: Il Locale, the Blue Swimmer in Gerroa, and another forty cafes across the Illawarra region. More information about the program can be found on Green Caffein's Instagram or Facebook pages.
Berry Waste Depot free recycling service	The depot accepts computer and electrical equipment, electrical leads, recyclable metal, smoke detectors, compact and fluorescent light bulbs, car batteries, motor and other oils, gas, water- and oil-based paints and batteries.
Illegal dumping	Contact Shoalhaven Council Ranger Services on 4429 3433 (after hours 4421 3100). If the matter is urgent, contact the Environmental Protection Agency on 131 555.
Recycling / reuse at local shops	Flavours Shoalhaven refill Morella Grove olive oil glass bottles. Take your own containers to Leaf Thai restaurant for meals, Il Locale for gelato, and the deli section at IGA. The Treat Factory will fill your container or glass jar for bulk dried fruit, nuts etc, during quiet periods.
Medication and Sharps Disposal	Medically generated syringes, needles and sharps can be disposed of for free at the Berry Pharmacy. Take your sharps in a sealed puncture resistant container. The pharmacy will also safely dispose of out of date medication.
Environmentally conscious brands to support	IGA stocks: If You Care (household cleaning, cooking and storage products, toothbrushes); Ansell eco-rubber gloves; Ecostore cleaning products; Safe toilet paper (paper wrapping). Nourish Kitchen + Lifestyle stock beeswax wraps for food, as well as kits to DIY; White Magic cleaning and food storage products; Keepcups, Avanti, Teaology, Casa Barista and Earth Bottles for your take away coffees and other beverages.
Libraries let you purchase less, and read more	Shoalhaven Council's library bus is parked in Princess Street just past the School of Arts building, every Friday from 2.00 pm to 4.00 pm. Berry Street Library in Broughton Place is sponsored by the Berry Alliance; borrow, read and return, or add a book for someone else to enjoy. Berry Community Library at the Berry Uniting Church is open Mon and Wed 1-4 pm, Tues, Thurs, Fri 10 am – 1 pm.

Berry Restaurants & Cafes, Functions & Catering Guide

RESTAURANTS & CAFES

HEDGEHOGS COFFEE SHOP

4/98 Queen Street, Berry - t 4464 3051

7 days - 8am to 4pm

www.hedgehogscoffeeshop.com.au

SAVANNAH CAFE

Stan Burt Arcade, Berry - t 4464 3880

Please note our NEW opening hours

Closed: Tuesday

Lunch: Everyday from 11am except Tuesday's

Breakfast: Weekends & Holidays ONLY from 9am

Dinner: Friday and Saturday nights from 5.30pm - bookings are essential!

FUNCTIONS & CATERING

BERRY COURTHOUSE AND GARDENS

Corner Victoria Street and

Albany Street Berry 0458 369 266

www.berrycourthouse.org.au

functions@berrycourthouse.org.au

Facebook Berry Courthouse

Functions, Weddings, meetings inside historic Courthouse and in purpose designed gardens.

SAVANNAH CAFE

Stan Burt Arcade (shop 5 - in the arcade behind Cuckoo Corner)

t 4464 3880

www.savannahcafebar.com

Facebook:

facebook.com/savannahcafebar

If you would like your restaurant listed here please contact Nancy Davies 0428 037 572 or Email towncrier@berryalliance.org.au

Berry Railway Station Precinct Committee met with Sydney Trains Personnel

A meeting was held on Thursday 18th October 2018, between Richard Wolfson, Station Precinct Development Manager, and Andrew Killingsworth, Heritage Manager, Sydney Trains, and the Berry Railway Station Precinct Committee and members of various community groups. It was a very encouraging meeting, as both Richard and Andrew thought the condition of the Berry Station Master's residence was not too bad overall and a report on its condition would be available in about six weeks' time. It was thought that the residence should be kept within the precinct and not separated from the station. Bundanoon Station has recently been restored along with its signal box, and it is a good example of what could happen with a railway station precinct. Both Richard and Andrew were keen to work with the Precinct Committee to further the cause of the precinct, and it was agreed that we should have another meeting in December.

Calendar of Events

OCTOBER/NOVEMBER

23 October - Tuesday - The Zonta Club of Berry dinner meeting - 6.30 for 7pm - Hotel Berry. Book with Cecilie Lewis on 4464 3913.

24 October - Wednesday - 10 am Coffee and Friends host special guest speaker. Please come along for a great morning. Everyone is welcome! The venue is Wesley hall at the Uniting Church, 77 Albert Street.

3 November - Saturday - Men's Shed Garage Sale 8am at 146 North Street, Berry. Hundreds of items available covering a wide range of goods. Ideal for Christmas and other occasions. Everything must go!

9 November - Friday - Monthly meeting of the Berry Branch of the CWA of NSW at 1 pm followed by afternoon tea. At the CWA rooms 79 Victoria St Berry, visitors welcome.

11 November - Sunday - Remembrance Day at Berry Memorial Park. Service commences at 10.40 am. This year's commemoration marks the 100th year of the end of WWI hostilities, a war that claimed more Berry local men than any other conflict.

14 November - Wednesday - CWA Group Land Cookery Day, Wednesday, Presbyterian Church Hall Berry.

18 November - Sunday - Friends of Meroo Union Church will be conducting their regular Monthly Service at 2pm. Non-denominational, all most welcome. Afternoon Tea follows the service. Cnr Boxells Lane & Princes Hwy, Meroo Meadow. Contact Rae 4448 6048.

20 November - Tuesday - Berry & District Garden Club monthly meeting, 7.30pm in St Luke's Church Hall, Princess St, Berry.

23 November - Friday - The Australian Institute of Architects will be holding a seminar at the Berry School of Arts titled, 'The Changing Face of Regional Country Towns - Berry 2050'. Doors are open to all residents at 1.30pm for an information session on the Draft Urban Design for Regional NSW. See Page 5 for more information.

24 - 25 November - Saturday & Sunday - Berry Riding Club's Pink Ribbon Horse Festival. Riders of all ages and abilities are invited to come and join the fun, and help us raise funds for the National Breast Cancer Foundation. Dressage takes centre stage on Saturday 24th, with horse and rider combinations putting themselves to the test on our fabulous new arenas. Then on Sunday 25th it's the Fun-khana, with ring events for all levels of riders. See more on page 18.

REGULAR EVENTS:

Mainly Music - for preschool-aged children and their carers. Every Tuesday during term time at 10am. Venue Berry Community Church, Schofields Lane. \$5

The Berry Computers for Seniors meets in the Berry Uniting Church hall on the first and third Wednesdays of each month from 9.00 - 10.30am.

The 'Third Wednesday Book Group' will meet in the Community Library June from 4-6pm. We bring along our favourite books or talk about our favourite authors and enjoy drinks and nibbles along the way. Everyone is welcome.

Gentle Chair Yoga - Every Tuesday 9.30 - 10.30am except the first Tuesday of the month. Phone 0412 244 735 for class details.

Energising Chair Yoga - Every Wednesday 9.30 - 10.30am at St Lukes Hall, except the first Wednesday of the month. Phone 0412 244 735 for details. Class includes strength, flexibility and balance whilst sitting or standing using chair as support. \$15 class. No term fees.

Dancing for Joy - Every Thursday 9.30 - 10.30am at Berry Uniting Church Hall, except the first Thursday of the month. Phone 0412 244 735 for class details Suitable for everyone. No partners needed. Variety of dance styles to exercise your brain, improve balance, increase vitality and Joy. \$15 class. No term fees

FUTURE DATES

1 December - Saturday - 2.30pm - Shoalhaven Lydian Singers present THE MORNING STAR at St Patrick's Church, Berry. TICKETS: \$30, Concession: \$25, Students: \$10, Under 15 FREE. Afternoon tea included. <http://www.lydiansingers.org.au> Contact: 0412 219 895

2 December - Sunday - 2.30pm - Shoalhaven Lydian Singers present THE MORNING STAR at Nowra School of Arts. TICKETS: \$30, Concession: \$25, Students: \$10, Under 15 FREE. Afternoon tea included. <http://www.lydiansingers.org.au> Contact: 0412 219 895

8 December - Saturday - CWA craft street stall, Broughton Court.

14 December - Friday - Monthly meeting of the Berry Branch of the CWA of NSW at 1 pm followed by afternoon tea. At the CWA rooms 79 Victoria St Berry, visitors welcome.

24 December - Monday - Carols in the Park - 7pm Berry Apex Park- bring a chair or rug and celebrate Christmas with the people of Berry. Organised by the Christian Churches of Berry - Enquiries: Ken Wade 0408 644 063.

Annual Events Guide for Berry 2018

For more information regarding each event please refer to the community group listing on the next page.

Registered Community Groups organising annual events are welcome to contribute and advise of further information or changes to listed information.

MONTH	EVENT
RECURRING MONTHLY EVENTS	<p>First Sunday of the Month</p> <ul style="list-style-type: none"> • Penwood Railroad Inc, a scenic miniature railway open from 10:30am till mid afternoon. 215A Princes Highway - Jaspers Brush NSW - Ph: 02 4464 1201 • Berry Country Fair (Berry Markets). Approximately 200 stalls selling handmade products, arts and crafts, fresh produce and more. Berry Showground • Berry Cool Estate Market, 16 Coolangatta Road – Every second Sunday of the month. Nursery, Café, Food Trucks, Markets.
JANUARY	
FEB	131st Annual Berry Show – 1st & 2nd Feb 2019 Berry Showground
MARCH	
APRIL	ANZAC Day Youth Week Easter Celebrations
MAY	Berry Celtic Festival, Berry Showground National Motoring Heritage Day, Berry Showground
JUNE	
JULY	
AUGUST	4th & 5th - Annual Camellia and Floral Show
SEPTEMBER	Berry Small Farm Field Day
OCTOBER	18-21st - Berry Garden Club's Annual Garden Festival
NOVEMBER	Remembrance Day 3rd November Berry Men's Shed Annual Garage Sale
DECEMBER	Berry Merry Christmas Carols in the Park, Apex Park Rotary's New Year's Eve Fireworks Berry Showground

BUSH FIRE DANGER PERIOD AND FIRE PERMITS

A Fire Permit will be required for burning activities during the Bush Fire Danger Period which started on **1st September 2018**. Fire Permits help ensure fire is used safely and minimise the danger to you, your property and the community.

THE KEY THINGS TO REMEMBER

- You need a fire permit if it's the Bush Fire Danger Period.
- Just because it's the Bush Fire Danger Period doesn't mean you can't use fire - but there are restrictions to ensure fire is used safely.
- Getting a permit is free and easy. Contact Fire Control Centre on 4424 4424.
 - There are heavy penalties if you don't follow restrictions or rules.

40 KM PER HOUR SPEED LIMIT FROM 1 SEPTEMBER

Please be aware that vehicles are now required to slow to 40 km per hour when passing a stopped emergency vehicle with red/blue flashing lights. This came into effect on 1 September 2018.

For more information go to <https://www.rfs.nsw.gov.au/fire-information/BFDP>



Boomerang Bags Berry
will be at the
Farmers' Market
Thursday 22nd November
There will be some
lovely Christmas Bags
for sale

Meetings: First Tuesday of the month
Committee Rooms, Berry Showground

Katrina Underwood 0416 181 543



AUSTRALIAN LABOR PARTY

"To promote equality,
to involve the people of
Australia in the decision-
making processes of
our land, and to liberate
the talents and uplift the
horizons of the
Australian people"

GOUGH WHITLAM

**JOIN. PARTICIPATE.
CONTRIBUTE.**

TOM KOREVAAR
SECRETARY - BERRY
SHOALHAVEN HEADS
ALP BRANCH

0429 012 796
tomkorevaar@live.com.au

Community Groups

BERRY COMMUNITY GROUPS

Berry Alliance Inc. 0449 569 059
PO Box 202 Berry 2535
info@berryalliance.org.au
www.berryalliance.org.au

Berry Alliance Town Crier 0428 037 572
PO Box 202 Berry 2535
towncrier@berryalliance.org.au
www.berryalliance.org.au

Berry Chamber of Commerce & Tourism Inc.
PO Box 216 Berry 2535 4464 3122
info@berry.org.au www.berry.org.au

Amnesty International Berry Local Action Group
PO Box 397, Berry 4464 2879
Contact Susan Locke
info@berryamnesty.happenings.id.au

Australian Red Cross 4464 2479
Honorary Secretary -
Margaret Walsh 21 Windsor Drive Berry
1st Wednesday each month at 2.00pm
Berry Uniting Church

Berry Alcoholics Anonymous 1300 903 392
Meets every Thursday Night at 7.30pm,
Uniting Church Hall Annex,
77 Albert Street, Berry - Garry: 0420 932 494

Berry Al Anon Family Group For family & friends of problem drinkers 4448 8231
Meets in the Friendship Rooms of the Uniting Church 77 Albert Street Berry on Mondays at 7pm

Berry Forum (Community Consultative Body)
www.berryforum.org.au
2nd Thursday bi-monthly 7.30pm at the School of Arts Berry

Berry Community Activities Centre Inc. 4464 1476
Berry Community Craft Cottage
12 Prince Alfred St Berry 2535
1st Monday Monthly, 5pm @ Muir House
berrymarkets@bigpond.com

Berry Courthouse Conservation Committee
PO Box 218 Berry 2535 0458 369 266
2nd Monday Bi-monthly at 5.30pm
at the Berry Courthouse
functions@berrycourthouse.org.au
www.berrycourthouse.org.au

Berry Evening View Club 4464 1191
Secretary, PO Box 275
sel4957@bigpond.net.au
Meets 3rd Wednesday monthly, 6.30 pm
at Berry Bowling Club

Berry Masonic Village Auxiliary Inc 4464 1774
Mail: 42 Albany Street, Berry, NSW, 2535
3rd Wednesday monthly, 9.30am in Activity Hall, Albany Lane, Berry Masonic Village

Berry Meals on Wheels 4464 1604
PO Box 221 Berry NSW 2535
3rd Monday monthly at 9am RSL Hall Berry

Berry Men's Shed 4464 3956 / 4464 2619 A.H
PO Box 103 Berry 2535
richardcwiseman@hotmail.com
Tuesdays and Thursdays 9am-4pm
North Street Berry www.berrymensshed.com.au

Berry RSL Sub Branch
PO Box 3307 North Nowra 2541 -
stuartfchristmas@gmail.com
1st Tuesday Monthly at 9.30am
Sub Branch Hall 26 Alexandra St Berry

Berry Rotary Club 0408 979 337
PO Box 81 Berry 2535
barker_killaloe@hotmail.com
Every Thursday 6pm for 6.30pm at
Bowling Club - www.berryrotary.org.au

Berry Show Society Inc. 4464 1567
PO Box 173 Berry 2535
Meet 1st Tuesday monthly at
Committee Rooms at the Showground
berryshow@virtualcity.com.au
www.berryshow.org.au

Berry Showground Management Committee
PO Box 443 Berry NSW 2535 -
berryshowground-camping@gmail.com
Meet 2nd Monday Bi-monthly 7.30pm
Old Council Chambers
24 hour Caretakers / Bookings
Caretakers 0427 605 200

Boomerang Bags Berry 0416 181 543
Meetings: 1st Tuesday of the month:
Committee Rooms, Berry Showground.
Contact: Katrina Underwood 0416 181 543
Contact Elizabeth Dubbelde 0431 663 189

Country Women's Association - Berry Branch

PO Box 321 Berry 2535
2nd Friday each month at 12.30pm
in the CWA Rooms, Victoria Street
Contact Emily Boorer 0417 423 018

Conservation Committee for the Berry Railway Station Precinct
Meets fortnightly at the Berry Museum
Contact: sandraberner@hotmail.com

David Berry Hospital Auxiliary 4464 1774
PO Box 285 Berry 2535
bke25349@bigpond.net.au
2nd Monday Monthly, 12.30pm
David Berry Hospital Conference Room

Freemasons Lodge Broughton 131 4421 7346
PO Box 2092 Bomaderry NSW 2541
Secretary: John Dyason
lodgebroughton131@gmail.com

Jaspers Brush Airport Action Group Inc.
www.takeaction.org.au
PO Box 428 Berry NSW 2535
Meeting as convened

Lodge Broughton 131 4421 8026
P.O. Box 2092 Bomaderry 2541 NSW
lodgebroughton131@gmail.com
Meets 1st Wed. of each month except
Jan. at the Agricultural Hall Berry

Probus Club of Berry 4464 3525
PO Box 68 Berry 2535
berryprobus@gmail.com
Meets 2nd Tuesday monthly, 9.30am
Berry Masonic Village Hall

Shoalhaven Poultry Group 0410 548 704
161 Kangaroo Valley Road
1st Wednesday each month above address
info@shoalhavenpoultry.com.au
www.shoalhavenpoultry.com.au

St. Vincent de Paul Society Client Help Line:
PO Box 77 Berry - Ph 4464 3940 4421 0390
Vinnies Boutique Shop 117b Queen St Berry
Conference meets every 1st Mon.
7pm St. Patrick's Hall

Zonta Club of Berry
Ph 4464 3913 (Cecilie Lewis)
or 4464 2653 (Leonie Winlaw)
PO Box 302 Berry 2535
Email: berry@zontadistrict24.org
www.zontadistrict24.org
Meets 4th Tuesday monthly for dinner

ARTS

Berry School of Arts
Office open Thurs and Fri 10am till 3pm.

Australian Decorative Fine Arts Societies - Shoalhaven
PO Box 269 Berry NSW 2535 0429 549 942
www.adfas.org.au/shoalhaven/
Monthly, 7.30pm at The Berry School of Arts

Berry & District Historical Society Inc
PO Box 153 Berry 2535 4464 3097
berrymuseum@bigpond.com
www.berryhistory.org.au

Berry Silver Band (est. 1897)
Owen 4464 1250 / Kaye 4465 1240
6 Clarence Street Berry 2535
kayecj@westnet.com.au
Meet Monday evenings 7.30-9.30pm,
Agricultural Hall, Berry Showground

Berry Spinners and Weavers
Contact the secretary (Alison) on 0422 760 363
PO Box 377 Berry 2535
berryspinnersandweavers@gmail.com
Thursdays 10-12noon at Berry Showground Hall

Cantares: Community Choir
Monday 7.30 - 9.00pm
Scots' Presbyterian Hall, Alexandra Street Berry
Contact: Peter Dalmazzo 4448 6164

Knit with Love
Lyn 4464 3651 c/- 34 Princess St Berry 2535
terryandlyn@gmail.com
Meets Every Friday 1pm - 3pm
St Luke's Anglican Church Hall

RedBerry Quilters
Meetings held on the 4th Friday of each month
9.30am-1.30pm. Sewing Days held on the
2nd Friday of each month 9.30am-1.30pm at
St Luke's Anglican Church Hall, Princess Street
Please contact mail to:
secretary@redberryquilters.org

CHURCHES

Berry Community Church 4464 2315
8 Schofields Lane Berry
Services 9.00am, 10.00am and 5.00pm
info@berrycommunitychurch.org

Berry Uniting Church 4464 2904
77 Albert Street Berry
Services at 9.30am
berryuniting@gmail.com

Meroo Union Church 4448 6048
Monthly service at 2pm
(3rd Sunday of the month)
Corner of Boxells Lane & Princes Hwy,
Meroo Meadow. Contact Rae 4448 6048

St. Luke's Anglican Church 4464 1058
68A Princess Street, Berry 2535
office@berry.anglican.asn.au
www.berry.anglican.asn.au

St. Patricks Catholic Church 4423 1712
Albert St. Berry - Normal Mass times:
Sunday 8am Tuesday 5.30pm
Community Group PO Box 304 Berry meets
2nd Monday 7pm St. Patricks Hall

Scots' Presbyterian Church in Berry
E. isaac.jung@hotmail.com 0405 139 031
H. 81 Victoria St Berry

EDUCATION AND PLAYGROUPS

Berry Apple Users Group 0416 168 638
P.O. Box 103, Berry, 2535
Meets at 7.00pm on the 2nd Tuesday of the
month (except January) at
Berry Uniting Church Hall,
77 Albert Street, Berry
Email: berryappleusersgroup@gmail.com

Berry Community Pre-school 4464 1764
PO Box 143 Berry 2535
berrypreschool@bigpond.com
www.berrypreschool.org.au

Berry Computers for Seniors 4421 3270
PO Box 103 Berry 2535
1st and 3rd Wednesdays of each month,
9.00 - 10.30am, Uniting Church Hall,
77 Albert Street, Berry

Berry Ethics Society 0451 153 332
PO Box 363 Berry - Meets 1st Monday of each
month at the Berry Hotel

Berry Playgroup
Berry Community Church Hall
Schofields Lane, Berry. Fridays 10.00-12.00
Facebook: The Berry Playgroup
Email: berryplaygroup@hotmail.com

Berry Public School P&C Association 4464 1158
PO Box 222 Berry 2535
berrypandc@gmail.com

Mainly Music 4464 1693
Berry Community Church Hall -
for children under five and parent /carers
Meets Tuesdays during school term
10-11.30am \$5 per family

GARDENING AND LAND CARE

Berry & District Garden Club 4464 1191
PO Box 122 Berry 2535
3rd Tuesday Monthly, 7.30pm
St Luke's Church Hall, Princess Street
Mary Seelis - Secretary
www.berrygardens.org.au

Berry Landcare 4464 2241
PO Box 422 Berry NSW 2535
berrylandcare@gmail.com
See monthly article for working bees

Berry Public School Plant Propagation Nursery
Lyn 02 4464 3911
Meet Thursday afternoons during school hours
lyn-clark@outlook.com.au

Brogers Creek Landcare 4465 1482
53 Wattamola Road Wattamola NSW
Last Saturday of each month 2.30-4.30pm

Gateway Community Garden
141 Woodhill Mountain Road
All welcome, plots available.
Contact: Tom Darby 4464 2859

Hands Across NSW Inc 4446 0567
PO Box 162 Cambewarra NSW 2540
Meets 1st Sunday, monthly at Broughton Lodge,
Berry Agriculture Hall

POLITICAL GROUPS

Australian Labor Party Berry 0429 012 796
Shoalhaven Heads Branch
Meets 2nd Wednesday each month,
6.30 pm Hotel Berry
secretarybshalp@gmail.com
PO Box 474 Berry 2535

Liberal Party of Australia - Berry Branch
0412 550 480 hartwell@bigpond.com
Meets 1st Monday of the month
06.30pm for 07.00pm start at Berry Hotel

RECREATION

Berry Bridge Club INC 4464 3009
PO Box 366 Berry 2535
mcorran@shoalhaven.net.au
Meets Saturdays @ 12.45pm-4.30pm at the
Masonic Lodge Community Hall

Berry Camera Club 0488 031 961
Meetings on 4th Wednesday of Each Month
6:00pm @ Berry Bowling Club
Info: www.berrycameraclub.com
fb:BerryCameraClub

Berry Crafters & Quilters 4464 3788
Meets each Wednesday 10am-4pm at
Muir Cottage, Prince Alfred Street

Penwood Rail Road Inc. 4464 1201
B215a Princes Highway Jaspers Brush 2535
Running day 1st Sun monthly - visitors welcome

Shoalhaven Historic Vehicle Club Inc. 4464 1723
PO Box 1, Nowra NSW 2541

SPORT

Berry Hockey Club 0412 218 704
PO Box 4055 Nowra East NSW 2541
www.berryhockeyclub.com.au

Berry Netball Club 0417 285 789
1 Barwon St Bomaderry Meets monthly at the
Great Southern Hotel MT816834@bigpond.net.au

Berry Men's Bowling Club
Berry Men's Bowling Club
PO Box 139 Berry NSW 2535 Club 4464 2995
President: L McNamara 4464 1868
Bowls Organiser: D Lambert 4464 2332
Bowls Bookings: 0475 768 249

Berry Junior Mixed Touch Football 0431 530 543
7 Boran Place Berry becantom2@bigpond.com
School term 4 - Thursday 4pm till 6pm at the
Berry Sporting Complex, North Street Berry

Berry Riding Club 4464 1143
445 Coolangatta Road Berry 2535
1st Tuesday monthly at the Berry Hotel
jasiy@bigpond.net.au www.berryridingclub.com

Berry Shoalhaven Head Rugby
League Football Club
First Wednesday evening of the month at
The Berry Hotel - 7pm Great Southern Hotel,
Berry. Email: berryjuniorleague@gmail.com
www.facebook.com/groups/325991097440833/

Berry Shoalhaven Heads Cricket Club
0422 688 901
PO Box 206 Berry NSW 2535
www.bshcc.nsw.cricket.com.au
2nd Monday of each month
during cricket season at the Berry Hotel

Berry Shoalhaven Heads Junior League
0414 973 795
PO Box 162 Berry 2535 bshjrllc@hotmail.com
First Wednesday of the month
7pm at the Berry Bowling Club

Berry Tennis Club
PO Box 133 Berry NSW 2535
e: berrytennis@hotmail.com
Meet 7pm second Thursday of every second
month at Clubhouse at Tennis Courts

Berry Women's Bowling Club
Meet Tuesdays and Thursdays 9am during
daylight savings; 9.30 in winter @ Berry Bowling
Club. Contact Heather Fealy 4464 3624 or
Pam Tulloch: 4464 2284

Diamond Calisthenics Club
Jodie Dearsley 0414 655 129
Classes for ages 3-100 held Tuesdays at Berry
School of Arts, Cnr Alexandra & Princess Sts
www.diamondcalisthenics.com
diamondcalisthenics@hotmail.com

Shoalhaven Heads Surf Life Saving Club
Mackintosh Street Shoalhaven Heads
www.headssurf.com.au Facebook: Shoalhaven
Heads Surf Life Saving Club. Phone:
0432 331 915 or info@headssurf.com.au

EMERGENCY 000

Police Assistance Line (non-urgent Police reports) 131 444
Berry Police 4464 2175 - Fire and Rescue NSW 4464 1008 or 000
Rural Fire Brigade (Broughton Vale) 4464 1522
SES - For Emergency help in floods and storms 132 500

Berry Riding Club – Riding Fun for Everyone

Mark your calendar... the date is officially set! Berry Riding Club's Pink Ribbon Horse Festival will be held on the weekend of 24-25 November. The Club is thrilled that the new section of our grounds has passed the final approval process through Council and now ready to be officially opened in conjunction with the Pink Ribbon Festival. The weekend promises to be a fun-filled flurry of pinkness!

Riders of all ages and abilities are invited to come and join the fun, and help us raise funds for the National Breast Cancer Foundation. To date, BRC is proud to have donated \$19,700 from Pink Ribbon Horse Festival events, and we can't wait to add a significant amount more to that tally. Throughout the weekend competitors and their mounts are encouraged to go pink for breast cancer. There's no such thing as too much pink when it comes to Pink Ribbon weekend!

Dressage takes centre stage on Saturday 24th, with horse and rider combinations putting themselves to the test on our fabulous new arenas.

Then on Sunday 25th it's the Fun-khana, with ring events for all levels of riders. Sunday will also be the official opening of the Equestrian Centre, with local dignitaries joining us to mark this significant milestone.

And, of course, non-riders are always welcome to come along and enjoy the atmosphere of the event. You'll find us on Schofields Lane,



a few hundred metres beyond the Local Land Council offices. More details and a map are on our website www.berryridingclub.com.

In other club news, the October long weekend was abuzz with 199 riders from years K-12 competing in the Berry Interschools Equestrian Championships at Worrigea Equestrian Common. It was a fabulous weekend of great sportsmanship and friendly competition. Riders came from throughout the state, and one from Victoria, to enjoy three days of riding that included dressage, showjumping, hunter classes, sporting, and hacking.

Congratulations to Berry Public School and Nowra High School for taking out the Champion School trophies. We also extend a very big thank you to our sponsors for their continued support – we couldn't make this popular event happen without you.

'Til next time, happy riding! And remember to like us on Facebook to keep up to date with BRC events and activities.

BERRY BRIDGE INTERCLUB

Berry Bridge Club recently hosted their home stage of the annual Interclub Series. Bridge clubs from Southern Highlands, Bowral and Kiama and Berry converged on Berry Masonic Recreation Hall to contest the this, the third round in the Series.

Kiama Bridge Club led from the outset, remaining in the lead all day. There was a very exciting tussle between Southern Highlands and home club Berry and at the lunch break the two teams were equal second on the ladder. With some hard fought play during the afternoon, Berry inched ahead and eventually took out a well deserved second place.

Congratulations to Kiama Bridge Club who will be the hosts of the final leg.

The interclub Series between the four clubs has been running for nearly 13 years and each year is becoming more and more popular. Last year Berry Bridge Club won two legs of the series, a first for the club.

An early reminder, the Christmas Party will be held on Saturday, December 15, so please keep this day free and join all the Berry members at this time of good cheer and celebrating another successful year of bridge.

Finally, we have one remaining RED POINTS day for your diary: - November 10.

Until next time: HAPPY BRIDGING

Marea Allen - Media



Chair Yoga Classes

for the wellbeing needs of the mature body

- * stretch and strengthen without strain
- * improve posture, balance & stability * better breathing
- * relax body & mind



Energising Chair Yoga
Wednesdays

St Luke's Church Hall, Berry

9.30 - 10.30 am

Cost: \$15

Gentle Seniors-Tuesdays
(phone for details)

No classes 1st week of month



Contact Marilyn - Ph: 0412 244 735 E: info@marilynmartin.com.au
www.marilynmartin.com.au

PROUDLY SUPPORTING



GARAGE SALE!

- And sausage sizzle -

Sunday 2 December 2018

9am to 2pm

57 Queen Street Berry

All proceeds from the garage sale and sausage sizzle will be donated to Motor Neurone Disease NSW

PROUDLY SUPPORTED BY



The Berry Bacon Factory

The Berry Bacon Factory was established by Lawrence Geoghegan in approximately 1884, opposite the junction of Prince Alfred and North Streets, on the site of the present skate board park and tennis courts. On Saturday March 10 1894, the Berry Register reported: "A Factory which puts through an average of 300 pigs per week and utilises every part of them, from tail to squeak, deserves some attention in these columns."

Lawrence was the second son of Priscilla Gard and William Geoghegan who had begun farming and bacon curing in Kiama in 1868 on a site near Hindmarsh Park.

In 1874 Lawrence married Susannah Holden and commenced business in the bacon trade in approximately 1882, moving to Berry to start the factory there about two years later. They had 9 children and their eldest daughter, Louisa Catherina, married George Gillam of Berry in 1896.

An 1885 Survey listed Lawrence as having 14 acres at Berry, with 4 horses and 100 pigs and in early 1886 there were frequent advertisements in the local press cautioning dog owners of his intention to lay poison on the factory property.

The Berry Register quoted at the time, "The Factory.....is a very complete concern and is admirably managed. The traveller may pass by the factory without having the olfactory sense offended in the slightest degree."

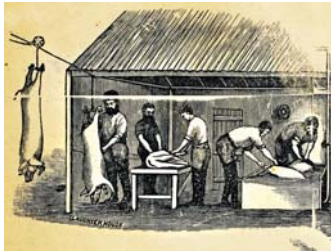
In about 1889 a complete set of freezing machinery was installed, at a cost of £3000. This was quite a large sum at the time. Steam engines provided the power for cutting the wood and the meat, and 12 men were constantly employed at the factory. Large amounts of lard were put up, and many of the bladders that were used for this were imported from America. It took from 6-12 weeks to convert a pig into good bacon, which was then wrapped in clean cloths bearing the legible brand of the letters LG over the letter B and sent to market. An establishment in the city sold 2000 of this factory's hams during one Christmas season.

In 1895 Lawrence bought land at Bomaderry and began a larger factory there, installing a refrigerating plant brought from America.

Unfortunately, the businesses did not succeed and in 1897 Geoghegan was bankrupt. He voluntarily sequestered his estate in January 1897 and applied for discharge in July 1899, but died later that year. The Bomaderry factory recovered and prospered however, and by 1901 had become the Bomaderry Mild Cure Bacon Factory operated by Denham Bros from Sydney, processing 500 pigs per week. In 1906 it became the Shoalhaven

Cooperative Bacon Curing Company.

*Right: A Sketch of the Geoghegan Bacon Factory's Slaughter House
Far right: The Geoghegan Family.
At rear from left: Laurence, William John & Mary Charlotte. Sitting: William senior and Priscilla with Richard James.*



Berry Museum

135 Queen Street
BERRY 2535



OPENING HOURS

Saturdays, School Holidays
and Public Holidays

11.00am - 2.00pm

Sundays

11.00am - 3.00pm

FREE ENTRY

www.berryhistory.org.au



ST. LUKE'S ANGLICAN CHURCH

68a Princess Street Berry

Serving the Berry community since 1873

Acting Rector Bishop David Mulready

Join us for Sunday services

8:00 am (Traditional) or 9:30 am (Families)

or the 1st, 3rd and 5th Thursdays at 11:00 am (Communion)

Phone 4464 1058 or Email office@berry.anglican.asn.au

For information on activities www.berry.anglican.asn.au



Meals on Wheels
Berry

Berry Meals on Wheels is a great service for Berry. Our numbers have grown over the past few months so that we are now offering frozen meals to some who only require this service short term or a few days a week for themselves. This way, clients can heat them up when they are ready and still come and go, like we do in Berry; after retiring we all seem to be busier.

BUT - We are in need of VOLUNTEERS we deliver hot meals to around 16 clients Monday to Friday picking up from Berry Masonic Village at 12.15 pm and delivering which takes sometimes over 1-1.1/2 hours each delivery.

So, could you HELP us and become a VOLUNTEER for Berry Meals On Wheels? Please ring Pat on 4464 1194.

Of course, a police check must be done when signing on.

We look forward to you joining a great cause.

belle PROPERTY

Welcome to our office

With our office perfectly located as you enter the beautiful township in an elegantly restored heritage building, Belle Property Berry is primed to offer the local and nearby communities a real estate experience which other companies often aspire to but rarely achieve. One of the most experienced real estate teams on the South Coast is focused on bringing sellers and buyers together with an absolute commitment to exceptional customer service, professionalism, integrity and of course results!

Quality service begins with courtesy and respect, backed up with enthusiasm, a desire to support and help and a determination to ensure the job is done properly. Clear, open communication is essential in bringing the right properties and buyers together. Our team at Belle Property Berry take the time to understand what is important to their clients and make sure they are informed every step of the way. Time and time again, this has proven to be the difference between 'for sale' and 'sold'.

Gary Dale

Principal/ Licensee

0418 211 917

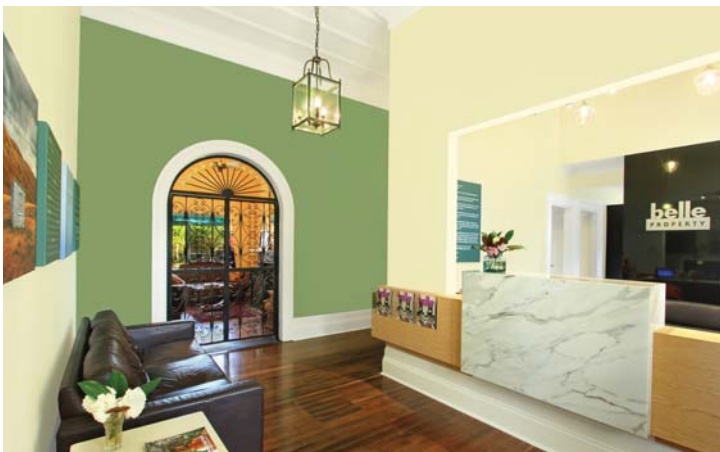
gary.dale@belleproperty.com

Nick Dale

Senior Property Consultant

0419 425 166

nicholas.dale@belleproperty.com



- 4464 1636 -
122 Queen Street, Berry



Berry Community Church

True Freedom

November 11th is Remembrance Day. It's the day we remember all those who have gone to war on behalf of us. We remember the brave men and women who entered into the mess and terror of war so that we could experience freedom.

Freedom is a multi-faceted concept. In the context of Remembrance Day, it speaks of freedom from oppression. I believe that freedom from oppression is a basic human right. We should all be able to live without fear and injustice. Unfortunately, there are many in the world who don't currently experience this kind of freedom.

There is also freedom from constraint. This is the kind of freedom many think of in our part of the world. It's the kind of freedom to do whatever you want, whenever you want. This is all well and good until our expression of freedom is harmful to ourselves or others. You only have to know someone suffering the effects of drug or alcohol dependency or visit someone in prison to realise that not all expressions of freedom are good for us or our society.

There is a third kind of freedom, the freedom that is found when we choose to love - each other and God. The Apostle Paul writes in Galatians 5:13 - 'It is absolutely clear that God has called you to a free life. Just make sure that you don't use this freedom as an excuse to do whatever you want to do and destroy your freedom. Rather, use your freedom to serve one another in love; that's how freedom grows.'

When we choose to love, we become free from a whole heap of things that can hold us down. Things like feeling like we need to compete with or look better than others. I believe that when we choose to be generous with our time and energy and resources we experience a freedom that is so much better and so much more satisfying than the freedom to do whatever, whenever. As Paul says we need to use our freedom well, otherwise it will be 'destroyed'. At Berry Community Church, we believe that true freedom is found in connecting with Jesus and His plan for our lives.

If you would like to speak to someone about what it means to find freedom in Jesus, give me a call or send me an email, or turn up to one of our services.



Berry Community Church

Lighting up lives and communities with Jesus

**We meet at Graham Park
8 Schofields Lane Berry**

Sunday Services 9am, 10am & 5pm

Activities include mainly music, Boys & Girls groups,
Berry Youth & Connect groups.

We'd love to see you here.

info@berrycommunitychurch.org 4464 2315
www.berrycommunitychurch.org

AUSTRALIAN RED CROSS BERRY BRANCH

the
power
of
humanity



100 YEARS
PEOPLE HELPING PEOPLE
1914-2014

**BECOMING A MEMBER
OR VOLUNTEERING**

If you wish to find out about becoming involved with or volunteering with the Red Cross contact the Berry Branch of the Red Cross (see Community Groups page of Town Crier for contact details), the Nowra Red Cross Office (1800 621 433) in Graham Street Nowra or go onto the Red Cross website.

DROUGHT APPEAL

Berry branch members collected for the Red Cross Drought Appeal during August and September. We wish to thank the local community, visitors and private donors in enabling us to raise the magnificent sum of \$5622.70.

Funds raised through the Australian Red Cross Disaster Relief and Recovery Appeal will be used to enable short-term financial relief arising from drought affecting rural communities. This may include supporting individual and household health and well-being by making financial support available to meet everyday household expenses, as well as helping people access social, health and educational activities.

INDONESIAN EARTHQUAKE/ TSUNAMI APPEAL AND BIG CAKE BAKE APPEAL:

These two appeals, this past month, raised a total of \$850.15 to be distributed between the Annual Red Cross Cake Bake Appeal, whereby funds go to Red Cross general funds, and the Indonesian Earthquake Appeal. Once again, many thanks to the public for your ongoing support of our organisation.

For the Indonesian crisis, Red Cross is providing first aid and medical transport to survivors, distributing tarpaulin and sleeping mats for shelter, and conducting assessments. Medical, surgical and sanitation teams are on their way to the affected area.

Support may include emergency relief and recovery assistance, such as food, water, sanitation, shelter and health initiatives including blood, sending specialist aid workers to assist in initial assessment, relief, recovery and disaster and crisis management operations working in affected areas to strengthen local resilience and deliver effective relief and recovery services.

We have also welcomed new members to our local branch, so please consider joining if you are thinking of supporting a Berry organisation. Our presence at the recent Volunteer Expo Day at the Berry Courthouse has therefore proven to be a success.



Raine&Horne Berry



PRINCIPAL/SALES
Jacqui Crapp
0429 104 011



SALES
Kimberley Clarke
0418 204 518



SALES
Alex Cochrane
0412 081 600



PROPERTY MANAGER
Amy Jarrett
0421 325 513



PROPERTY MANAGER
Margaret Skelton
4464 1300



MEET THE AGENTS FROM RAINE&HORNE BERRY

With their combined knowledge from years of experience in both Real Estate and the banking world, Jacqui Crapp and Kimberley Clarke work as a close knit team to provide their clients with a full service experience when selling or purchasing their home.

The market is changing and it's important to stay updated with how these changes will affect your property.

We invite you to come and have a chat, give us a call or send us an email to keep updated on the market conditions. Talk to the team who is happy to share our knowledge with you.

Proudly brought to you by the agents
most active in the 2535 postcode

Raine&Horne®

02 4464 1300

www.rh.com/berry

Berry & District Garden Club News



SECRETARY MARY SEELIS 4464 1191 VISIT US ON www.berrygardens.org.au

The transformation of the countryside and our gardens has been remarkable following the recent wet weather. The rain came just in time for the owners of the gardens in the Berry Gardens Festival. Most challenged by the drought were the three country acreages where the needs of wilting plants and parched lawns had to be balanced against dwindling tank and dam levels. With rain- refreshed lawns and garden beds bursting with growth and colour, all the gardens were at their best. The Berry Gardens Festival offered variety, pleasure and inspiration. We hope you enjoyed it!

The owners of the Toowoomba gardens visited by our recent "Carnival of Flowers" tour group faced even greater challenges. Gardens crammed with spring colour and manicured lawns defied the drought which had seared the surrounding countryside brown. No doubt the garden owners had incurred significant water bills. Parks filled with floral displays were packed with visitors and the Grand Central Parade impressed with over an hour of floats and entertainment. This is an event that should be on the bucket list of all who enjoy gardens and gardening.

A rain induced flurry of growth unfortunately also means weeds. It is time to mulch, both to suppress their growth and to conserve the soil moisture. A covering of at least 7.5-10cm will be needed to protect the garden against the El Nino predicted to arrive before Christmas. Remove weeds, water if needed, fertilise and then mulch, keeping it just clear of trunks, stems and the crowns of plants. It is also time to visit the local nurseries to find new treasures to pop in. We are fortunate to have small independent nurseries in our district and they deserve our patronage. Look around the garden, think of Christmas entertaining and set out to create areas that will provide seasonal pleasure.

The Garden Club year is drawing to an end. It has been a busy few months with the handover to a new committee led by incoming President, John Edmonds, the very enjoyable tour to Toowoomba, preparations for the large Festival plant stall, the Festival launch in the Court House and four days of Festival duty. The next meeting on Tuesday 20 November will be the last before a summer break. This is a special meeting where the Gardens Festival is reviewed and donations from gate takings are presented to representatives of the local not-for-profit organisations nominated by the open garden owners. There will be no guest speaker, but visitors are, as usual, most welcome to join us at 7.30pm in St Luke's Church Hall in Princess St.

To find out more about our club, please contact our secretary, Mary Seelis, on 4464 1191 or visit us on www.berrygardens.org.au



Berry mainly music is just one of many groups that introduce children and parents to early learning activities, and as a family we love to share and support the members of our groups that are doing it tough through the effects of the drought. We often feel helpless in offering support and care for our country cousins. The Berry mainly music group has had the opportunity to assist another mainly music group who are having difficulties owing to the drought. We have offered to assist the group for the next four months with a donation to help with expenses of running a group including much need resources and extra items that will show our care and concern; it may be only a little thing although it is one way we are able to let others know we care. Our mainly music families have given generously, and I would like to challenge other groups to think about ways they can assist. With Christmas quickly approaching, we are aware how hard it is for folk who are doing it tough, so we want to give help and encouragement to as many families as possible. For more information, please contact Trish Nicholson on 0401 151 820. Thank you so much.

Rotary's Vision for Nature Play Parkland Getting Closer

Five years ago, the Rotary Club of Berry embraced a vision to establish a nature play parkland along North Street Berry once the bypass was completed, and has been campaigning for its development and fundraising for it ever since.

At the time, we said *"An adventure playground will not only be popular with the children of Berry but has the potential to become a significant tourist attraction in its own right. Berry currently offers few reasons for young families to stop and visit,"* and called on community support to help gain one of the best children's adventure playgrounds in Australia. This vision is getting closer.

Council's coordinator of Boongaree (the Berry District Park) advised at the last Community Forum meeting that detailed plans for the playground and park are to be completed by the end of October to enable grant funding to be sought.

The Rotary Club's main fundraising event for the playground has been our New Year's Eve Fireworks and Family Fun Night held each year. Whilst the funds raised are only a portion of what would be required to develop the whole park, the Club decided to add to the equipment being proposed by Council by offering to fund a double hamster wheel and an accessible carousel (merry-go-round). These are now included in the detailed plans.



Rotary
Club of Berry



With State Government financial support, the Club's vision will become reality. To keep track of the plans, go to the Council's website. <https://getinvolved.shoalhaven.nsw.gov.au/berry-district-park>

Everest Assault – GoFundMe to Support the Trekking Team Members

Last month we advised of the planned trek to Everest Base Camp to be led by Berry Rotarian and adventurer Ken Hutt as a means of raising funds for Rotary's EndPolioNow campaign.

There are currently a number of locals who have put their name down for the trek with each to raise \$2000 for EndPolioNow knowing that for each dollar raised, the Bill and Melinda Gates Foundation will match those dollars 2 to 1.

The trekkers include Deb Mainsbridge, Jason Cox, Angus Fripp, Laurelle Price, Linda and Vanessa Wright, Maisie Randall, Nicholas Kilminster, Amanda Green, Walter Moore, Alison Lyons and Ken Hutt. To support the trekkers in raising funds, a GoFundMe page has been set up. Just go to Berry Rotary's website www.berryrotary.org.au to click on the link to the GoFundMe page and then select the 'Donate Now' button and follow the prompts to nominate the person you wish to support.

And, if Everest is on your bucket list, it is not too late to join the trekking group – give Ken Hutt a call on 0418 205 225.

The Rotary Club of Berry always welcomes people interested in finding out more about the Club. Just contact Membership Director Phil Monaghan on 0428 946 268 or President Peter Stinson on 0438 130 748.

RedBerry Quilters

a community based quilting group

We are a group of quilters and stitchers who aim to promote the art and craft of patchwork and quilting, and to bring quilters together to exchange information, knowledge and skills in quilt-making in a friendly, supportive and generous environment. We enjoy sharing our knowledge and interests in a wide range of stitchery and textile arts, and on our monthly meeting days we have guest speakers who are always accomplished, interesting, and passionate about their art or craft... leaving us inspired, whether we are beginners, 'old hands', or professional.

At our September meeting, Veronica Appleyard from Appleyard Cottage shared her own inspiring stitching and designing story, showed us several beautiful quilts she's designed and made, and brought along a fantastic range of products from her excellent shop. On a different note, at our August meeting, Jen Wulff told us of her journey as she wrote a most interesting book and designed and made a wonderful accompanying quilt celebrating the stories of often forgotten, but always remarkable, trailblazing women of Australia and the towns they often helped establish. Veronica's and Jen's work, enthusiasm and skills are indicative of the outstanding stitchers and designers we are privileged and delighted to have visit us each month.

Every couple of months we have a Block Challenge, when the participants have the chance to win all the blocks to make up a quilt for themselves, or to give away. We often have stitching or textile art demonstrations, activities and/or challenges to help develop new skills - or just for fun.

From time to time, we have quilt-making days when we get together to prepare, make, or finish quilts to donate to various charities. These are also very enjoyable and gratifying get-togethers, in the true spirit of quilt-making. If you have an interest or passion for working with textiles, why not come join us for some stitching, a chat and morning tea, and meet our remarkable guests.

Join us at 9.30am - 12.30pm, St Luke's Anglican Church Hall, Princess Street, Berry twice monthly, on the 4th Friday for meetings and on the 2nd Friday for sewing days.



Recent Illawarra Quilt Show Blue Ribbon winner and RedBerry member, Jenny Breeze's striking, fun and beautiful embroidered, patched, and quilted Sue Spargo-designed quilt.



We're on Facebook @ www.facebook.com/redberriesquilting/ or contact our Secretary at redberrysec@gmail.com

a community based quilting group

ANN SUDMALIS MP

Federal Member for **Gilmore**

The Federal Government increased drought support of **\$1.8 billion** will help my local farmers who have been asking for a well organised approach to the assistance and fundraising by all Australians.

The drought response includes the appointment of a National Drought Coordinator, new tax breaks for farmers, low-interest loans and the application form for the Farm Household Allowance is being made easier.

However more awareness needs to be raised about the tough conditions facing our dairy farmers and I'll continue to fight for this on their behalf.

For help with the Farm Household Allowance, contact the Rural Financial Counselling Service on **1800 686 175** or the Farmer Assistance Hotline on **13 23 16**.

NB: due to increased call volumes some delays may be experienced.



JOBS

(02) 4423 1782

ROADS

annsudmalismp.com.au

WELLBEING

DEFENCE

ann.sudmalis.mp@aph.gov.au

Authorised by A.Sudmalis MP, Liberal Party Australia, 59 Junction Street, Nowra NSW 2541.

TRADES & SERVICES DIRECTORY

Canine Cardio

Dog Walking & Animal Home Care

Dog Walking | Pet Minding | Doggy Daycare | Overnight Stays

Annette Brooker

0418 427 438

info@caninecardio-homework.com.au
www.caninecardio-homework.com.au



Television Antennas SHOALHAVEN ANTENNAS

Servicing Berry and surrounding areas.

- Digital Upgrades
- New Installs
- TV Tuning
- Repair existing systems
- Add Phone/TV Outlets



Ph: 0410 526 672 Paul 0424 243 005
Fax: 02 4422 6672

WINDOW
& GUTTER
CLEANING
HOUSE
WASHING

CALL JAMIE
FOR FREE
QUOTE

0413 582 948



PROMPT, RELIABLE SERVICE



HIGH QUALITY, THERMALLY EFFICIENT BESPOKE HOMES.

www.illawarraprecasthomes.com.au

Phone: 0409 622 175

Builders' Lic. 183068c

GETTIN' IT DONE! TREE SERVICES

TREE REMOVALS • TREE PRUNING
BLOCK CLEARING • WHOLESALE MULCH
STUMP GRINDING • CHERRY PICKER HIRE

JASON 0432 281 063
WWW.GIDTREESERVICES.COM.AU



~ Specialising in gentle,
low force techniques ~

SAFE, EFFECTIVE TREATMENT FOR:

- All ages; from babies through to the elderly.
- Headaches/migraines
- Back/neck pain
- Postural problems
- Whiplash
- Scoliosis
- EFTPOS available
- HICAPS now available

57 Queen Street • Phone: 4464 3414

TANNED HIDES, BERRY NSW

TANNED HIDES

Professionally Tanned Hides available
- your hide or choose from our range

PHONE 0409 444 081

All enquiries welcome
www.tannedhides.com.au
e: sales@tannedhides.com.au

Ian's Interior Linings



★ All plasterboard &
fibrous plastering

★ Commercial & Domestic

M: 0418 220 751

E: willey63@bigpond.com.au

AIS CERTIFIERS

FAST TRACK
BUILDING APPROVALS

SWIMMING POOL
COMPLIANCE CERTIFICATES

TONY LEWIS

0417 372 728 • 4421 0004

info@accreditedinspectionsservices.com.au

THE BOUTIQUE GYM

Personal Trainer Jen Miller

117 North Street,
Berry NSW 2535

☎ 0413 648 943

jenmiller65@hotmail.com



LOCAL • COUNTRY • INTERSTATE

Experience a New Level of Professionalism
Phone 04 2864 3557 or 4464 3557

Four Legged Friends PET FEEDING SERVICE

For Horses, Dogs, Cats, Birds
& all other domestic pets

Megan White
dip in animal care

0407 407 328

whitewolf99@bigpond.com

Established: 1995

- FEEDING • EXERCISING • RUGGING
- GARDEN • MAIL • GARBAGE

www.fourleggedfriends.com.au



All Creatures
Mobile Vet



- Convenient pet health checks and vaccinations
- Compassionate euthanasia at home
- Complete range of Veterinary services
- Pick up and drop off service when your pet needs to visit our hospital
- No call out fee
- Emergency service available
- Service area from Albion Park to Milton NSW

Personalised Veterinary care at home

(02) 4464 1899 www.allcreaturesmobilevet.com.au

Roof & Building Repairs

Roof Leaks

Leak Detection

Moisture Problems

0415 997 977

Info@benchmarkbuild.com.au

gerringong physiotherapy
nowra central physiotherapy
shell cove physiotherapy
kiama physiotherapy

4234 4666

www.gerringongphysio.com

TRADES & SERVICES DIRECTORY

Vaughn's Lawn & Garden Service



- Local knowledge
- Professional service
- Fully insured

0408 863 776

www.vaughnsgardening.com.au

G.M. Ellison & Co. lawyers • conveyancers

Graham Ellison LL.B.

- Real Estate & Business Conveyancing
- Wills, Probate and Personal Arrangements

5 HOST PLACE BERRY
Ph: 4464 3814 / 0408 444 808
graham@gmellisonlawyers.com.au

TERMITES!

- ▼ Pre purchase termite inspections and reports
- ▼ Termite barriers new & existing buildings, council approved
- ▼ Thermal imaging and microwave inspection tools
- ▼ Termite Baiting Systems

FREE QUOTES Call
TERMITE SOLUTIONS-
4448 5444
termite experts

Fully Licensed, Accredited & Insured
Family Business with over 20 years experience

PROPERTY MAINTENANCE HOME HANDYMAN

- Repairs and installation of doors/windows/gates and fencing
- Small extensions - decks/pergolas
- Tipper Hire
- Clean ups - rubbish removal
- 40 years' experience
- Fully licensed

Michael Barrett 0408 217 637

BERRY MAINTENANCE PLUMBING

ALL PLUMBING SERVICES
Gutters Hot Water Toilet Repairs Leaks

Paul Bramley Licence L5826

Mobile: 0438 641 046

Office: 02 4464 1312

MY CERTIFIER

BUILDING CERTIFICATION

Construction Certificates, Complying Development Certificates, PCA Services, Pool Compliance, Basix Certificates, DA Assistance & Building Consultation

Che Leonard BPB1812

0417 593 496

Email: che@mycertifier.com.au
www.mycertifier.com.au

ease
Acupuncture + Chinese medicine

Digestive health
Women's health
Injury + Pain
Stress + Anxiety

57 Queen St, Berry | 0487 858 394
www.ease-acupuncture.com

HERE IS HOW TO GET THE BEST KITCHEN,
VANITY, FURNITURE, TIMBER WINDOWS,
DOORS, FLYSCREENS AND JOINERY

Rybrook Joinery

CALL SCOTT OR MICHAEL

4422 4600

MICHAEL HILL PAINTER & DECORATOR

Quality Work Guaranteed

Domestic Commercial Industrial

ABN 95 969 204 488 Lic No 121389C

0402474569

- Specialising In
- New/Old work
 - Feature Walls
 - Roofs
 - Texture Coating
 - Heritage

Arborist
Complete Tree Removal & Care
Reliable Professional Service
Mulch Sales
Stump Grinding
Fully Insured

Dave Kelly

0423 903 946

All aspects of professional tree care.



- Domestic and Commercial Cleaning
- Regular and Spring Cleaning
- Presentation Cleaning
- Rental Exit Cleaning
- Window Cleaning

Call Rhona for a free quote: **0417 652 892**

Over 20 years' Experience ...

ELECTRICAL CONTRACTOR

EEPS
Lic. No. 133674C

DOMESTIC & COMMERCIAL

Solar Power Installation
Home Automation Systems
Security Lighting
Pools & Spas
Hot Water Systems
Oven & Stove Repairs
Safety Switches
Smoke Detectors

Contact peter today!

0412 594 907 | 4464 1993

ENDEAVOUR ENERGY AUTHORISED LEVEL 2 SERVICE PROVIDER



JET LOCKSMITHS & SECURITY

Automotive | **Residential**
Commercial | **Industrial**

MOBILE 24/7 LOCKSMITH SERVICE
0498 770 088

www.jetlocksmiths.com.au

Master Locksmith | Security Lic #000101098

Gerrongong Painting Service

Lic: 186465C

- New & Repaints
- Interior & Exterior
- Small Jobs Welcome
- 30 Years Trades Experience



GREG DENT 0438 637 141



MISS SPARKLES SHOALHAVEN External House Cleaning

HOUSES FROM \$148

- Environmentally Friendly
- House/Driveway Packages
- Removal of Cobwebs
- Patios and Driveways
- Mildew Treatment
- Windows/Screens included
- Commercial work
- Seniors Discount

Phone Dennis for a free quote:
0407 642 256

Now Offering: Internal Window Cleaning &
Licensed/Insured Electrical Work (Lic No. 209514C)

TRADES & SERVICES DIRECTORY

CKB CIVIL

All Earthworks
Landscaping
Driveways
Rural Roads



Charlie 0418 429 740
charlie@ckbcivil.com.au

Lic 244729c

CANOPY CLIMB

CLIMBING
ENTHUSIAST

CANOPY CLIMB ARBORIST

» All aspects of tree work » 20 years' Experience » Fully Insured

0400 777 605
canopyclimbing@gmail.com



SCHOON PLUMBING

Plumbing-Drainage-Gasfitting
Roofing-Guttering
schoonplumbing@hotmail.com

Mini Excavator Hire
New Homes-Renovations
Tindalls Lane Broughton Nsw 2535

Call Today! 0419624011



Computer Troubleshooters

TECHNOLOGY SOLVED

- Residential or Business we come to you.
- Hardware and software repairs and sales.
- Networking solutions.
- Over 20 years' experience.

0422 227 456
www.ctsnowra.com.au

LOCAL SERVICE - GLOBAL STRENGTH

Glynn's Carpentry

YOUR HOME IS IN GOOD HANDS

Maintenance, Repair & Renovation Specialist

"I can help with those odd little jobs that never seem to get fixed or a bigger project like a new kitchen or bathroom"

Lic # 218008C

For a friendly free quote - Glynn 0423 384 072



ROB PACKER POND & DAM CARE

- Algae & weed control
- Pumps & filtration
- Fish & plants
- Maintenance & repairs

0409 550 741

Curran Plumbing

PLUMBING AND PIPE RELINING

Local Plumber
Fast & Reliable 24/7

1300 792 082

www.curranplumbing.com.au

10% OFF
IF YOU
MENTION
THIS AD



Southern Tree Service

- Qualified Arborist
- Qualified Horticulturist
- Tree care and maintenance
- Expert trimming and tree removal in confined areas
- Chipper • Mulch
- Advice on replacments
- Stump Grinding
- Fully Insured

Paul Gillen

Ph/Fax 4464 2822 • Mobile 0407 405 968

JASON COX

LICENSED REAL ESTATE AGENT

0429 949 900
jason.cox@oneagency.com.au
Shop 6, 90-92 Queen Street
Berry NSW 2535
02 4407 5000
Shop 2, 160 Moss Vale Road
Kangaroo Valley NSW 2577
02 4465 1996
www.oneagency.com.au

ONE AGENCY
COUNTRY LIVING

WALLED GARDENS

Kangaroo Valley Berry Bowral Wildes Meadow

garden maintenance
garden design
installation

Joshua Wall
02 8999 1408
04 2357 8716

hello@walledgardens.com.au

www.walledgardens.com.au



SOUTH COAST
COLOUR
of Berry

Colour Consultancy

Interior Decoration

Luxury Lighting

Asha Ardill 0423 820 370 asha@southcoastcolour.com.au

www.southcoastcolour.com.au

RBS rural bitumen services pty ltd

Specializing in Private Road Construction
& Bitumen Seal

- Driveways
- Carparks
- Decorative driveways
- Fully Insured

Contact Office (02) 4464 1555

James 0416 269 744

MANN MADE BUILDING & CONSTRUCTION

CHRIS MANN 0431 671 475
mmbuildingandconstruction@gmail.com

NEW HOMES | RENOVATIONS | EXTENSIONS | DECKS-PERGOLAS | CONCRETING

ABN 40 624 149 506 LIC. NO. 292587C

Barrys Mowing & Maintenance Service



RESIDENTIAL & SMALL ACRES | BERRY & SURROUNDS

Fully Insured | Call for a Free Quote

0409 929 534

South Coast Gutter Wiz

GUTTERS BLOCKED?

Our safe, affordable & mess-free vacuum gutter cleaning service is now available in your area! Keep your home free from debris & bushfire safe. Pressure Cleaning service also available.

Call for a free quote today....

Your vacuum gutter cleaning expert

Phone Garry 0401 492 220



ESTABLISHED 1863

BERRY HOTEL

Melbourne Cup Luncheon

TUESDAY 6th NOVEMBER

\$35

- ☞ 2 course set-menu in the Courtyard from midday
- ☞ Pop-up menu in Main Bar from 11.30am
- ☞ Full TAB facilities and sweeps
- ☞ Doors open from 8am on Cup Day!

Bookings Essential



LIVE MUSIC LINEUP

WOODY Saturday 3rd November

BONNIE VILLAINS

Saturday 10th November

Rockabilly Party

Ho Ho Ho!



BOOK your Christmas Party or Drinks NOW!
Let us take care of your Christmas Cheer at this Festive time of Year!

every FRIDAY night tickets ON SALE 5.30pm-7.30pm

CASH JACKPOT RAFFLE



\$4,200!!!
at time of print

Supporting
Berry Shoalhaven Heads Cricket and
Senior Rugby League Clubs
LTPM/18/05518

Jackpots
\$200
every week!

RESTAURANT NEWS

- * **Tex Mex Tuesday is back:**
- November 6th Aal meals \$18.50
- * **Ribs & Rumps every Thursday:**
- PLUS kids eat free during Term 4 (conditions apply)
- * **2 and 3 course specials:**
- Monday and Wednesday
- * **ALL DAY Sunday Roast:**
- on Sunday, of course!



120 Queen Street, BERRY www.berryhotel.com.au
p. 02 4464 2294 f. 02 4464 2142 e. info@berryhotel.com.au

TAB



facebook.com/TheBerryHotel



[@theberryhotel](https://twitter.com/theberryhotel)



Smartphone App

Restaurants . Functions . Accommodation . Live Music

RESPONSIBLE SERVICE OF ALCOHOL AND GAMBLING

OFF-STREET PARKING FOR PATRONS AT THE REAR OF THE HOTEL

