

Keeping Berry Informed



BERRY TOWN CRIER

PO BOX 202 BERRY NSW 2535

WWW.BERRYALLIANCE.ORG.AU

 FIND US ON FACEBOOK

OCTOBER 2018 PRICE: \$3.00

Page 9

**RED CROSS'
FIRE SAFETY
TIPS**

Page 25

**SLOW FOOD
COMES TO
BERRY**

**BERRY GARDENS
FESTIVAL
THURSDAY 18TH
TO SUNDAY 21ST
OCTOBER**

Page 27

**BERRY
JAZZ
FESTIVAL**

Page 4

Page 14

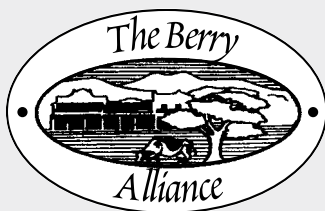
**ROTARY ARE
ORGANISING A TRIP TO
BASE CAMP IN 2019.
ARE YOU UP FOR THE
CHALLENGE?**

**BERRY PRESCHOOL'S
FUNDRAISING
EFFORTS**

Page 23



BERRY ALLIANCE INFORMATION



The Town Crier is produced
by the Berry Alliance, Inc.

The purpose of this publication is
to communicate to the people of
Berry about community activities
and to generate a small income
for the Berry Alliance to cover
administrative costs and donations.

MEMBERSHIP

Membership of the Berry Alliance
costs \$10 pa. It aims to share
information amongst community
groups and individuals, and to
ensure that Berry continues to be a
community we are proud of.

Membership is open to Berry
community groups and individuals.

To join the Berry Alliance,
write to

PO Box 202, Berry NSW 2535

ALL BERRY ALLIANCE ENQUIRIES

Secretary: 0449 569 059

Email: info@berryalliance.org.au
Post Office Box 202
Berry NSW 2535

Editor's Note



The closing date for our November
issue will be Wednesday 17 October
at 5pm. Please submit prior to this
date if it is your first submission.
Material can be submitted via e-mail
to: towncrier@berryalliance.org.au.
Phone 0428 037 572. Town Criers
can be downloaded for free from
www.berryalliance.org.au or our
Facebook Page: Berry Town Crier.

Nancy Davies - Berry Town Crier

TOWN CRIER EDITORIAL BOARD

Nancy Davies Rick Gainford
Holly Landgren Adrian Bishop

Contributors are those from the Berry community who
have news or views relating to residents of the area.
The opinions expressed in the Town Crier are not
necessarily those of the Berry Alliance or the Editor.
The Town Crier is published every month, with a
circulation of 2400.

PRINTED BY **Berry Printers**

CONCORDE WAY BOMADERRY PH: 4422 3774
PRINTED ON RECYCLED PAPER



Find us on:
facebook®



BERRY CWA

A DROUGHT RELIEF UPDATE

An update released August 1 from CWA State Office stated that the CWA of NSW Disaster Relief Committee had recently released an initial \$100,000 from the Disaster Relief Fund to assist the struggling farmers. An amount of up to \$3,000 was sent out to cover groceries, vehicle maintenance, school and household expenses and medical costs to those in need who applied. At that time, CWA of NSW funds were exhausted but, thanks to donations rolling in from the branches and the public, as well as organisations channelling donations through the CWA, the State President Annette Turner was able to announce on the Today Show Friday, September 7, that over \$1million has gone out to 634 families.

Individuals who wish can make a Tax-Deductible donation to the CWA of NSW Disaster Relief Fund online at www.cwaofnsw.org.au/donate

On the home front the recent Street Stall held in Broughton Court raised over \$2,000 with extra donations received from our members. Thank you to the Berry Community who are great supporters of all the different Berry organisations, the visitors to Berry on the day and our members who are always giving.

The work on our rooms is ongoing with a raised floor in the storeroom already completed bringing it level with the kitchen; a ramp and rails in place for easy access for those with walkers, wheelchairs and mobility scooters; no longer does the musty smell permeate everything in the kitchen cupboards or mould appear on the walls. The next step is to enlarge one of the toilets suitable for disabled access then hopefully the new kitchen. Once again thank you to the organisations and business people in Berry for their generous donations.

Friday, October 12 at 12 noon is the Branch Annual Meeting with an invitation extended to anyone who would like to attend. Gentlemen are most welcome. The Guest Speaker Anthony will speak on MY HEALTH RECORD. If you have any concerns this would be a good time to come and ask questions. This would also be a good time to check out our renovations and learn of the work undertaken by the members in the past 12 months. Wollondilly Group President Jennifer Blinkhorn will Chair the Election of Officers. A delicious afternoon tea will follow.

For further information on any of the above Berry CWA contacts are: President Emily Boorer 0417 423 018 or jeboorer@bigpond.com; Secretary Marie De La Torre 0408 585 522 or mkdeltatorre8@gmail.com

Shoalhaven Council's
Water Utility
WATER



LEVEL 1

Water Restrictions Start 3 Sept

The Shoalhaven is currently experiencing severe drought conditions. As a result **Level 1 Water Restrictions** will start soon to help us safeguard our precious water resources.

For more information call Shoalhaven Water
on 1300 662 246 or visit shoalwater.nsw.gov.au

Our current project: making Boomerang Bags for the Salt Ministries, Bomaderrry



Making and distributing bags is great way to bring the community together. The good people of Salt Ministries are committed to assisting the needy and the homeless.



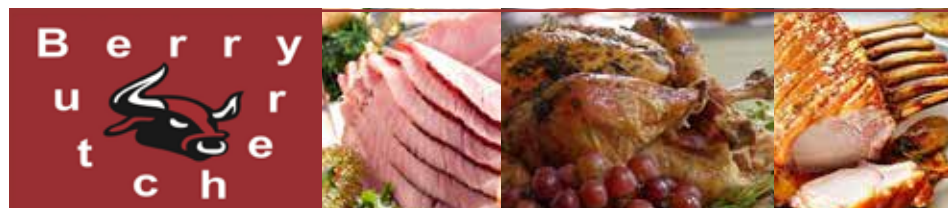
Look at those smiling faces! Salt helpers Sandra Thulin, Mitch Hudson, Ray Bellamy and Dillon, they love our Boomerang Bags.

OCTOBER MEETING:

TUESDAY, 2ND OCTOBER FROM 9.00AM
THE COMMITTEE ROOMS, BERRY SHOWGROUND
MEETINGS HELD 1ST TUESDAY OF THE MONTH

Shoalhaven
City Council

KATRINA UNDERWOOD – 0416 181 543 EMAIL: UNDERWOODHILL@ME.COM



Celebrate ORDER NOW FOR *Christmas*
*GET IN EARLY TO AVOID DISAPPOINTMENT!

TRADITIONALLY SMOKED LEG HAM
ROASTING LEGS OF PORK
ROLLED PORK LOINS
ROLLED SEASONED PORK FOREQUARTER ROASTS
FRESH CHICKEN
FROZEN TURKEY
FRESH TURKEY/FRESH DUCK
ROLLED SEASONED TURKEY BREAST
TURKEY BUFFET

ALL HAMS ARE CURED, COOKED AND SMOKED IN THE SHOP the traditional way!

129 QUEEN STREET BERRY PH: 4464 1063

EMAIL: berrybutchery@live.com FOLLOW US ON: @berrybutchers

**OLD WORLD
CHARM
AWAITS AT**

**MRS. RED'S
SHED & CO.
EMPORIUM**

49 QUEEN STREET BERRY

Be our guest and join us at Mrs. Red's Shed & Co. Emporium. You are sure to be amazed at the treasures you will find within our vintage centre. Newly established, we are open 7 days per week from 9am-4pm. Step back in time with our antique, vintage, retro and collectable wares, as well as handmade and edible goodies. Leave no stone unturned as you explore the store and be sure to pop in regularly, since new stock is added daily. Many locals visit weekly to ensure they don't miss out on our latest finds.

Old-fashioned customer service is paramount. If you are looking for a certain piece, we will do our best to find it for you. If you have something to sell, keep our upcoming vintage markets and auctions in mind, or come along to a furniture painting workshop, especially tailored to suit your needs.

The store is also a donation point for the charity organisation 'Doing it for Our Farmers'. The donated goods we receive are packed into hampers and distributed to drought-affected farming families interstate. Thank you to everyone who has been so generous thus far.

Being a true emporium, we are a collection of 19 small businesses within one large store. You are sure to find that we are quite unlike anything else you've experienced, and we really do have something for every taste. Our dedicated team looks forward to meeting you soon!

**Elissa
Sinclair**
Proprietor



THE FOURTH ANNUAL BERRY JAZZ FESTIVAL

SAT 6 and SUN 7 OCTOBER:

WANDERLUST - 25TH ANNIVERSARY CONCERT
FRANCES MADDEN & BAND
YOUNG BERRY JAZZ WORKSHOP
WOLLONGONG CON JAZZ ORCHESTRA
YOUNG JAZZ IN THE PARK

FULL DETAILS AND TICKET BOOKINGS AT: www.sima.org.au MEDIA ENQUIRIES/INTERVIEW REQUESTS: Chris Ruhle 0468 357 715

The fourth annual Berry Jazz festival takes place on the weekend of Saturday 6 and Sunday 7 October with a program designed to appeal to a wide cross section of the community as well as people of all ages.

Saturday 6 October:

9.30am - Young Berry Jazz Workshop and Concert - Uniting Church:

One of the highlights of the 2017 Festival were the kids' workshops under the direction of Eric Dunan from the Wollongong Conservatorium. Once again Berry Jazz is excited to have Eric on board again with a similar workshop culminating in a special kids jazz concert with the young players performing alongside some of our leading established jazz musicians.

Midday - Young Jazz Musicians In Apex Park:

The very scenic Apex Park with its historic rotunda is the setting for an entire afternoon of jazz featuring some of Australia's most promising young jazz

musicians. It's the perfect opportunity to spread the picnic blanket and enjoy three hours plus of inspiring music from the next generation of Australian jazz stars. Bring a picnic lunch and spread the blanket.

7.30pm - WANDERLUST - 25th Anniversary Concert - Berry Bowling Club:

MIROSLAV BUKOVSKY trumpet, flugelhorn/JAMES GREENING trombone/JEREMY SAWKINS guitar/ ALISTER SPENCE piano/ BRENDAN CLARKE bass/ FABIAN HEVIA drums, percussion
ARIA Award-winning, iconic Australian all-star band Wanderlust celebrates their 25th anniversary this year, playing to packed out clubs in Sydney and Canberra and now Berry Jazz! They'll be playing two long sets featuring some of their most popular compositions with a half-hour interval.

www.wanderlust.com.au/about.htm

book at - www.stickytickets.com.au/75294

Sunday 7 October

12pm - FRANCES MADDEN and band - Coolangatta Estate Winery:

'Practical Magic' - Lunchtime Concert:

FRANCES MADDEN piano & vocals/ BORBALA BODONYI backing vocals/ TBC tenor saxophone/ CARL DEWHURST guitar/ BRETT HIRST double bass/ TIM GELDENS drums

Described by Fine Music 102.5FM as 'Australia's rising star of jazz and blues', Frances Madden is one of Australia's most engaging young performers - a highly talented singer, pianist and song writer. Frances' music is jazz-oriented but with a broad adult contemporary appeal. Her shows are a mix of her unique take on timeless classics as well as her own original swing, blues and ballads.

www.francesmadden.com

book at - www.stickytickets.com.au/75320

HOW TO BOOK ONLINE: WWW.BERRYJAZZ.COM.AU COUNTER: BERRY MUSIC CENTRE, 1/118 QUEEN ST, BERRY 02 4464 1284

BERRY 6-7 JAZZ OCT 2018



Celebrate the 25th anniversary of Australian jazz legends Wanderlust, enjoy a Coolangatta Estate winery lunch with festival favourite Frances Madden, plus free outdoor concerts at Apex Park, free film screening, kids' workshop and more!
berryjazz.com.au



The Berry Forum

www.berryforum.org.au

Forum Meeting Held on 16 August

50 people attended the meeting, including Cllr. Nina Cheyne. Topics covered included a status update on Boogaree (Berry District Park), a presentation on Council's proposals for a Queen Street road safety project, updates on the DAs for Bangalee Motel and Huntingdale, and a presentation by Suzanne Campbell on Vennu, an online business to build more resilient communities by sharing community spaces.

Queen Street Road Safety Proposal

Council is seeking the Forum's feedback on a road safety project that proposes a 40km/h High Pedestrian Activity Area (HPAA) from Albany Street to Prince Alfred Street. Some residents have raised concerns about incidents at the intersection of Queen Street and Albany Street, including two recent accidents where cars have flipped over. We have asked Council to take these issues into account.

Huntingdale Development Information Session

On Tuesday 28 August 56 people attended a Forum information session about Huntingdale Park. Matt Somers, the project manager representing the developers Pindan, explained the background to the development and plans for Stages 8 & 9. His presentation is on the Forum website, with a summary of key points. Some of the issues raised by residents in the extensive Q&A session were:

- A perception that Council was obtaining significant financial contributions from Pindan; but appeared reluctant to allocate funds for public amenities or ongoing maintenance of public reserves in Huntingdale Park.
- It appeared Council was not intending to fund play equipment in an area allocated for community facilities. Matt advised

that Pindan were offering to purchase the equipment.

- There is frustration with the lack of open space for kids to play, especially since there were now likely to be many more younger residents with children than originally planned.
- There is limited connectivity planned for fauna between the forest area and the riparian area around the creek, i.e. a designated wildlife tunnel. A culvert pipe 750mm in diameter was considered ineffective for the quantity of rainwater that flows through the forest.
- Some residents thought the established forest area only needed low maintenance and should remain as a public space maintained by Council
- Concerns about the fire risk associated with only one exit road for 270 homes.

Overall, the session was very successful and residents expressed their appreciation for the opportunity to obtain information and ask questions in a structured, but informal environment. The Forum Committee is grateful for Matt's offer to present to the community and the attendance of SET consultants to answer questions. Council were invited to attend the session, but sent apologies as it clashed with a full Council meeting.

Next Forum Meeting & AGM is 11 October 7.30pm at the School of Arts

Eleven Committee members are renominating and the meeting will be asked to consider and confirm all nominations for the 2018/19 Committee. If you wish to nominate, please email berryforum@hotmail.com before Sunday 30 September with your details and a few words describing how you believe the Berry community would benefit from your membership.

Labor



AUSTRALIAN LABOR PARTY

"To promote equality, to involve the people of Australia in the decision-making processes of our land, and to liberate the talents and uplift the horizons of the Australian people"

GOUGH WHITLAM

JOIN.

PARTICIPATE.

CONTRIBUTE.

TOM KOREVAAR

SECRETARY - BERRY
SHOALHAVEN HEADS
ALP BRANCH

0429 012 796

tomkorevaar@live.com.au

Dancing for Joy

latin, disco, popular, exercising to music, easy community folk dances

- * increase vitality & energy
- * sharpen your brain
- * improve balance
- * have fun & make new friends

Suitable for all. No dance experience or partners needed!

Thursdays
except first one of the month

9.30 - 10.30 am

Cost: \$15

Berry Uniting Church Hall
77 Albert St

Bookings required



Contact Marilyn - Ph: 0412 244 735 E: info@marilynmartin.com.au



'Proclaiming Christ,
serving the community
with love'

Berry Uniting Church

77 Albert Street Berry

P: 4464 2904

E: berryuniting@gmail.com

Sunday Celebrations: 9.30am

Groups & Activities:

- Bible Study Groups
- Fellowship Groups • Prayer Groups
- Social Craft Group
- Computers for Seniors
- Berry Apple Users Group
- Coffee and Friends
- Berry Community Library

www.berryuniting.org



Berry Chiropractic

NEWS FROM BERRY CHIROPRACTIC:

Meet the new additions to our clinic!

57 Queen Street Berry

Felicity Ling ACUPUNCTURIST BHSC. (ACU)

Felicity Ling has a passion for working with the whole body, assisting patients to understand their presenting symptoms and how they may be connected. She is particularly fascinated by the connection of gut health to an individual's overall state of wellbeing and has aided many patients with the management of digestive troubles, stress and anxiety. Her most recent practice in Canberra saw her working predominantly in the area of womens' health and fertility, assisting with menstrual/gynaecological irregularities, natural fertility and IVF. Felicity's gentle approach may utilise a combination of:

- Acupuncture & Cupping
- Tui Na (Chinese remedial massage & Gua Sha)
- Chinese Dietary advice
- Herbal Prescriptions

Having recently relocated to the beautiful South Coast, Felicity enjoys her spare time surfing and exploring her new home. Contact Felicity to find out if acupuncture could help you. Private Health Fund Rebates are available.

p | 0487 858 394
e | info@ease-acupuncture.com
w | www.ease-acupuncture.com



Brienne Maloney

FOOD SCIENTIST & NUTRITIONIST
BASC(HUMNUT), ADVDIP(NUTTH)

Brienne Maloney is a Food Scientist and Nutritionist who has been working in the field since 2006. Bree has a scientific passion for gut health, digestion, the human microbiome and fermented foods. She is extremely knowledgeable about how food/ nutrition can be used to optimise health and alleviate chronic health complaints through beneficial actions within the gut.

"The past decade has seen an explosion of research into the microbiology of our gut and with this vast wealth of scientific literature now at our fingertips we can use evidence based nutritional care to help improve microbial diversity, gut barrier function, and elimination. What we eat impacts our microbiota, our gut health and influences the likelihood of developing chronic health conditions."

AREAS OF SPECIALITY

- Microbiome Screening & Restoration
- Irritable Bowel Syndrome
- Small Intestinal Bacterial Overgrowth
- Upper & Lower GI Dysbiosis
- Intestinal Hyper-permeability
- Chronic Constipation/ Diarrhoea/ Reflux
- Food Allergies/ Sensitivities/ Intolerance
- Eczema/ Psoriasis/ Acne/ Rosacea
- Auto-immune conditions
- Multiple Sclerosis
- Food Introduction & Acceptance (babies/ toddlers and children)
- Fertility, Preconception & Prenatal Nutrition
- Nutritional Lactation Support & Post Natal Depletion

Nurturing with
NUTRITION



p | 0401 356 928
e | nurturingwithnutrition@gmail.com

57 Queen Street Berry NSW 2535 02 4464 3414 admin@berrychiropractic.com.au
www.berrychiropractic.com.au

Interested in conservation and growing local native plants?

Plant Prop Nursery volunteers would very much like to meet people interested in learning and sharing knowledge and skills and assisting with the following activities in the nursery or at home:-

- Seed preparation for propagation and for Seed Banking
- Preparing teaching materials for children and volunteers
- Learning and demonstrating propagation techniques
- Assisting in the nursery and Tree Orchard
- Plant identification of local trees, shrubs and ground covers
- Seed collecting

If you are interested in attending a short demonstration / workshop about propagating local native plants at Berry Public School Plant Propagation Nursery, this invitation is for you.



Nursery benches

It is such a pleasure to work in the new nursery with so much light and space.

Red cedar by any other name is still Red cedar

Red cedar, *Toona australis* or *Toona ciliata* is one of the iconic trees of Berry. Mature trees can easily be recognised at this time of the year when the new flush of pink spring leaves appear almost overnight.

These majestic deciduous rainforest trees are fast growing and long lived. They are very desirable trees for a large gardens and parks and are also suitable for revegetation sites in rainforest areas. Red cedar also has historical significance in Berry and the Shoalhaven area.

The cedar tip moth often attacks in spring, especially on trees in open areas. In seasons when this occurs, the seed pods are infested with larvae and the seeds are eaten before they mature.

Once attacked by tip moth, the tree often develops spreading branches which make it a lovely shade tree, but for timber cutters, preference is given to straight unbranched specimens.

We are very fortunate to have a beautiful mature red cedar in the school grounds quite close to the nursery. Maybe this summer, the larvae of the tip moth might feed elsewhere, allowing the children to collect some seeds for propagation.



Propagation benches

INVITATION

BPS parents and grandparents and interested community members are invited to become involved with the Plant Propagation program.

A series of short (½hour) demonstrations / workshops has been planned at the new nursery on Thursdays between 12.30 and 1.00pm.

If you are interested in attending or just visiting occasionally to see what activities we do, email lyn-clark@outlook.com.au for further information.

bombo

blinds | curtains | shutters | awnings

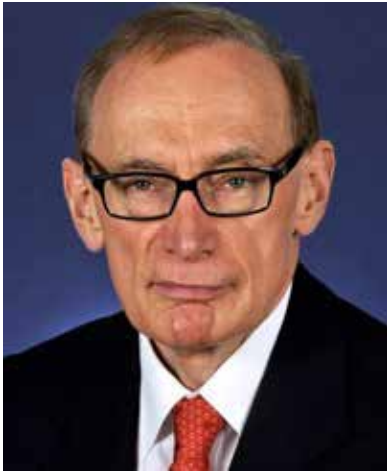


4237 8280 www.bombo.com.au

Visit our beautiful showroom at **7 Johnson Street, Kiama Downs** (near the IGA)

WE CARRY THE FABULOUS "BLINDS BY PETER MEYER" RANGE • ALL PRODUCTS COMPLY TO CORD SAFETY LAWS

Invitation to Attend Book Launch and Community Forum and Dinner with Professor the Hon. Bob Carr Hosted by Andy Higgins, ALP Candidate for Kiama



You are invited to attend a community forum and a private dinner at the Hungry Duck on Australia's aid program and foreign affairs along with a book launch of Bob Carr's latest book, a memoir, 'Run for Your Life'. Hosted by Andy Higgins, ALP Candidate for Kiama with our very special return guest Professor the Hon. Bob Carr.

Bob Carr was the longest continuously serving Premier in the history of NSW, served as foreign Minister for 18 months and since leaving politics has led a distinguished career as an author and an academic. He is the director of the Australia-China Relations Institute at the University of Technology Sydney. Here are two opportunities to be briefed on Australia's foreign affairs issues, aid program, tour his memoir and ask questions ahead of the federal election.

DATE: Sunday 21 October 2018

Forum: 2.30pm and afternoon tea: 4 pm – 5 pm \$15 pp

VENUE: Berry Courthouse, 58 Victoria Street BERRY

Private Dinner at the Hungry Duck, Berry 6.30pm \$200 pp

RSVP: Tuesday 16 October.

All proceeds go to Andy Higgins ALP for Kiama Campaign

<https://www.facebook.com/search/top/?q=andy%20higgins%20-%20country%20labor%20for%20kiama>

CONTACT and enquiries to Rick Gainford 0439 965 354 or rick.bmfberry@bigpond.com

Authorised by Rick Gainford 78 Woodhill Mountain Road Berry

HOW TO PREPARE FOR AN EMERGENCY

With a severe bush fire season likely to roll out over the coming summer everyone should prepare the things they will need to take with them if they have to evacuate.

As has been shown again recently, being in town does not necessarily protect your property from a fire as sparks can travel up to 6 kilometres and start another fire.

Red Cross has put together a list of things that will help you work out what you need to have ready to take with you. These are REDI KITS or SURVIVAL KIT CHECKLISTS.

It is best to buy a box with wheels, clearly mark it and in it put everything you wish to take.

There are two kinds of things you need to pack:

- Items that will help you survive during an emergency
- Items that will help you recover after an emergency

The following is an abbreviated list. The whole list and forms you can use for all the medical, contacts and important documents information you need to have ready is available on the Red Cross Website.

EMERGENCY ITEMS:

- Phone, torch, radio, chargers and spare batteries, candles and matches
- Cash and cards
- Water and food including for pets
- Protective clothing and blankets
- Any medical supplies or medications you need
- Toiletries, hand sanitiser, tissues, toilet paper
- Underwear, change of clothes and jumper
- First aid kit
- Entertainment such as cards, book or knitting

RECOVERY ITEMS:

- Sentimental things such as photographs, videos, jewellery or a child's favourite toy
 - Copies of important documents such as insurance or house titles or where to find them
 - List of important contacts or information such as your doctor, relatives, medicare number, private health insurance, blood type, health issues, allergies
 - Passports, wills licences, prescriptions, medical histories
 - Photos of valuable household items
- Set and annual reminder to check your kit so it is up to date.

BECOMING A MEMBER

OR VOLUNTEERING

If you wish to find out about becoming involved with or volunteering with the Red Cross the Berry Branch of the Red Cross (see Community Groups page of Town Crier for contact details), the Nowra Red Cross Office (1800621433) in Graham St Nowra or go onto the Red Cross website.

Berry Men's Bowling Club

Terry Bezant, Mark Power and Ben Watson took out the 2018 Club Triples Championship from Geoff Lidbetter, Nick Nicholls and Terry Hayes. The winners did most of the scoring over the first nine ends and then the Terry Hayes team showed some revival from that point and closed the match out by scoring five shots on the last three ends which wasn't enough to catch the winners.

Additional 2018 Club Championships are organised to be completed by early October. The Championships in question are the Major/ Minor Pairs, Minor Singles and Minor Pairs. Minors are members that have not won a Singles Championship and the Major/ Minor Pairs are developed by a blind draw which matches a Minor with a member who is classified as a Major for having previously a Singles Championship.

On Wednesday 22nd August the Club was represented by 21 members in the third Triangular Cup match for 2018 that was played at Shoalhaven Heads. Berry won five, drew one and lost one of the seven rinks they played. This performance was enough to give Berry victory in the 2018 competition from Shoalhaven Heads and Gerringong and allow them to regain the cup that was constructed and donated by Berry member Barry Dunn at the first match back in July 2015. This final match for 2018 saw 60 bowlers from the three clubs take to the greens.

Social bowls continues to be played on a Wednesday and Saturday at 1.00 pm with bookings to 0475768249 by noon day of play. Persons interested in trying out lawn bowls, the game for all ages, are most welcome and if required a set of bowls can be loaned on the day. Membership as a bowler is still available at the great price of \$45.00 and Social membership is available for \$10.00 and to join see a current member or the staff at the Club.

ANN SUDMALIS MP

Federal Member for **Gilmore**

The Federal Government increased drought support of **\$1.8 billion** will help my local farmers who have been asking for a well organised approach to the assistance and fundraising by all Australians.

The drought response includes the appointment of a National Drought Coordinator, new tax breaks for farmers, low-interest loans and the application form for the Farm Household Allowance is being made easier.

However more awareness needs to be raised about the tough conditions facing our dairy farmers and I'll continue to fight for this on their behalf.

For help with the Farm Household Allowance, contact the Rural Financial Counselling Service on **1800 686 175** or the Farmer Assistance Hotline on **13 23 16**.

NB: due to increased call volumes some delays may be experienced.



JOBS



(02) 4423 1782

ROADS



annsudmalismp.com.au

WELLBEING



ann.sudmalis.mp@aph.gov.au

DEFENCE

Authorised by A.Sudmalis MP, Liberal Party Australia, 59 Junction Street, Nowra NSW 2541.



Raine & Horne Berry

SOLD!!!



PRINCIPAL/SALES
Jacqui Crapp
0429 104 011



SALES
Kimberley Clarke
0418 204 518



SALES
Alex Cochrane
0412 081 600



PROPERTY MANAGER
Amy Jarrett
0421 325 513



PROPERTY MANAGER
Margaret Skelton
0412 856 077

476 Woodhill Mountain Road, Berry
995C Bolong Road, Coolangatta
9 Crookhaven Drive, Greenwell Point
141A Grahams Road, Meroo Meadow

SUPER SATURDAY AUCTION!!

12pm 6th October
Uniting Church
77 Albert Street, Berry



39 George Street, Berry



108 North Street, Berry



19 Victoria Street, Berry



45 Victoria Street, Berry

Proudly brought to you by the agents most
active in the 2535 postcode

Raine & Horne

02 4464 1300

www.rh.com/berry



Berry Community Church

The Opportunity of Offence

How do you respond when you have been offended or have found out that you have offended someone else? If, like most of us, you have chosen to live your life in regular contact with other humans, this will be something that happens far too often. I believe that when involved in an offence we are given the choice to react or to respond.

To react is to allow our impulses or emotions guide our behaviour. Often these do not produce the best outcomes. Instead, we find ourselves saying and doing things that we later regret and that cause harm to the relationship and in most cases our own interests. In this space, we often lay all of the blame on the other party, and totally absolve ourselves of any wrongdoing. Often relationships are damaged and if we choose to hold on to the offense for long enough, we become bitter.

To respond is to take a step back from the offense and seek to understand what part you and they have played in it. When we respond, we firstly try to understand what was going on for us that caused us to be offended. Sometimes in this process we come to the point where we realise it was mostly to do with our perception or some brokenness in our life that has caused us to feel the way we do. This presents us with an opportunity to work on this aspect of ourselves and in the process become more mature. Other times we will need to communicate our offense to the other, in which case we need to try and understand them and what caused them to behave in a way that has offended us. It is as we take the posture of seeking understanding that we are better able to work for the best outcome.

As James put it in 1:19-20 'My dear friends, you should be quick to listen and slow to speak or to get angry. If you are angry, you cannot do any of the good things that God wants done.'

To respond is by far the hardest choice to make, but ultimately it is the choice that will give you greater peace, better self-awareness and may even save some relationships. I pray that you would have the courage and the grace to respond to any offense that comes your way this week.

Joel Noonan - Berry Community Church

DAVID BERRY

HOSPITAL AUXILIARY

Volunteering for your local United Hospital Auxiliary (UHA) can be rewarding and satisfying because we raise funds specifically for the David Berry Hospital. The funds raised purchase extra special pieces of equipment for the patients comfort and care.

This month we held a very successful Father's Day street stall thanks to the generosity of locals and visitors alike who quickly swooped up the delicious cakes, slices and jams. One visitor told me "My family are in Berry for a wedding and these home-made goodies will be a wonderful treat."

Congratulations to Judy Rigg on receiving her House Life Membership

Judy started in David Berry Hospital Auxiliary in 1992 with her early years volunteering in the Diversional Therapy Department with craft activities. Always there whenever we have a street stall with her wonderful caramel



tarts; plenty of craft and for the Annual Easter Chicken Stall with colorfully knitted chickens and even rabbits from time to time.

Pictured: Sandra Walton Illawarra Regional Representative and Judy Rigg

We would like to publically thank Pam Coles for all her hard work for the Auxiliary. Pam joined the Auxiliary in 2005 and has held the position of Treasurer and Publicity Officer for over four years stepping down this year. Thanks again Pam – your work for the Auxiliary is very much appreciated.

If you would like to join our happy informal association, please contact us, we'd love to have you.

Sonja Van Hoof - Publicity Officer



Berry Community Church

Lighting up lives and communities with Jesus

**We meet at Graham Park
8 Schofields Lane Berry**

Sunday Services 9am, 10am & 5pm

Activities include mainly music, Boys & Girls groups,
Berry Youth & Connect groups.

We'd love to see you here.

info@berrycommunitychurch.org 4464 2315

www.berrycommunitychurch.org



SCOTS' PRESBYTERIAN CHURCH, BERRY

All Welcome!!!

Service Time: Sunday 10am

Sunday School: Sunday 10am

Minister Rev Isaac Jung - 4464 1020

**Cnr Alexandra Street & Victoria Street
Berry**

*Our purpose is to
Love God with our heart, soul, mind and might
and to
Love our neighbour as ourselves.*

*Ordinary people worshipping an
extraordinary God*

www.berrypresbyterian church.net.au



Berry Vet Clinic

THINKING OF BREEDING YOUR MARE?

Berry Veterinary Clinic is committed to the delivery of high quality advanced reproductive technologies for mare and stallion owners. We offer residential care and management of your mare for preparation and impregnation using chilled shipped or frozen semen. Mares will also be accepted for embryo transfer programs. The program will be under the direct care and control of our consultant Veterinarian, Dr Stuart Keller, who has for many years run a complete equine breeding service at Tamworth providing extensive artificial breeding and stallion management to the horse industry in northern NSW. Stuart has worked extensively with



thoroughbred breeders. The embryo program in its inception, will be offered on the basis of embryo recovery for shipment. Embryos will be implanted into surrogate mares prepared and managed by Dr Alan Simson, Australia's foremost embryo transfer Veterinarian.

Please call us for more information or to book a consultation with one of our Equine Vets today.



Introducing ...



All Creatures Mobile Vet

- Convenient pet health checks and vaccinations
- Compassionate euthanasia at home
- Complete range of Veterinary services
- Pick up and drop off service when your pet needs to visit our hospital
- No call out fee
- Emergency service available
- Service area from Albion Park to Milton NSW
- Personalised Veterinary care at home

(02) 4464 1899 www.allcreaturesmobilevet.com.au

Contact us (02) 4464 1899 to make an appointment at one of our clinics today.

Berry Vet Clinic

84 Queen Street
Berry NSW 2535

**Open: Mon-Friday
8am-6pm,
Sat 9am-12**

All Creatures Shoalhaven Heads

5/121 Shoalhaven Heads
Road, Shoalhaven Heads
NSW 2535

**Open: Mon-Fri 8am-5:30pm,
Sun 10am-12**

Kangaroo Valley Consulting Room

162 Moss Vale Road
Kangaroo Valley NSW 2577

Open: Tue-Thu 2-4pm

All Creatures Mobile Vet

Personalised Veterinary care at home

By appointment

www.allcreaturesmobilevet.com.au

**Ph: (02) 4464 1899 Email: info@berryvet.com.au Web: www.berryvet.com.au
House calls at no extra charge and 24 Hour emergency service available**

Catching the Steamer to Sydney

Getting to Sydney from Berry prior to the 1880's meant either travelling by horse and dray over rough roads or taking a Cobb and Co coach to Moss Vale and then travelling by steam train. Then came another option, which seemed much more pleasurable – The Coastal Steamer.

The steamers would travel south from Sydney, entering the Shoalhaven River at Crookhaven Heads, near present day Culburra. This entry point was made possible because of the canal built by Alexander Berry in 1822. The steamers would stop at Greenwell Point and travel up the Shoalhaven River, via Back Forest and Broughton Creek to Berry Wharf, located in the vicinity of the present Wharf Road.

In the early 1880's the movement of cargo and passengers on these steamers was handled almost entirely by the Illawarra Steam Ship Company. The locals, feeling that they were being 'ripped off', joined together as a Berry Co-op and bought their own little steamer which they called 'Our Own'. Unfortunately, in August 1880, on one of its trips to Sydney, its boiler lost pressure and it drifted ashore to become a total loss.

Following this disaster David Berry ordered two ships to be built in Glasgow for his tenants and business men on the estate so that their goods could be transported in and out of the area at a reasonable price. In 1883 the steam packet SS Meeinderry was built and in 1886, the SS Coomonderry.

From a Shoalhaven Telegraph article in January 1884, we learn that the Meeinderry had cargo hold and was able to carry horses or livestock on deck. The Saloon on the main deck carried ample room and accommodation for 28 passengers with, it was reported, the berths being open, well-lit and ventilated. The ladies' cabin which ran off the main saloon on the port side had room for 4 passengers and on the starboard side was the Captain's cabin. "The Saloon on the whole is a comfortable apartment, and is fitted up with lavatories and every convenience".

The Meeinderry made return trips from Berry to Sydney twice a week, while the Coomonderry made the return trip once a week.



A gala occasion occurred in November 1888 when Sir Henry Parkes, accompanied by a group of Ministers visited the area, in the Coomonderry. When David Berry died in September 1899, a total of about 2000 mourners were carried in the Meeinderry, the Coomonderry and another ship the Terara, along the Shoalhaven River towards the Coolangatta Estate, where he was interred.

*Pictured:
The SS Coomonderry
at the Berry Wharf*

Berry Museum

135 Queen Street
BERRY 2535



OPENING HOURS

Saturdays, School Holidays
and Public Holidays

11.00am - 2.00pm

Sundays

11.00am - 3.00pm

FREE ENTRY

www.berryhistory.org.au



mainly
music

Music is everywhere; patterns of sound are all around us and becoming alive to those patterns, playing with them, recreating them and creating more have given mankind joy since the dawn of time.

At mainly music the children and parent share these experiences together. You may believe that you are not musical; you may have been told that you can't sing in tune, or you have no sense of the beat, yet music is a part of the essence of every human being. Your heart beat, your breathing and even your walking with a pattern that repeats over and over form a steady pulse that is part of the rhythm of life.

In each session we hold with the children on Tuesdays we see the listening skills which the children learn through musical activities and how that assists their whole development. The musical experiences help lay foundations for emotional responsiveness. Language and the ability to communicate is enriched and body coordination and development benefits from the activities that accompany the movement and song. Music is just one of the special activities we share at mainly music for the children.

If you would like to learn more, come along and join us on Tuesday mornings from 10 am at Berry Community church. For more information, call Trish on 0401 151 820.



Is Everest on your Bucket List?

If trekking to Everest Base Camp is something that you have often thought about, then think no more. Ken Hutt of the Rotary Club of Berry is planning to lead a contingent of around twenty Rotarians and friends to Mt Everest Base Camp in March/April next year, and you have the opportunity to join them.

The focus of the trek is to raise awareness and funding for the eradication of Polio, with each of Ken's trekking supporters to raise at least \$2000 for the PolioPlus campaign.

Ken describes the trip as being a fantastic experience. *"The country is very safe, the people are very friendly, and the mountain and valley scenery is nothing short of breathtaking. This trip will not involve camping as we will be staying in Tea Houses, providing comfortable accommodation with good quality food".*

"The trek will involve acclimatisation walks and rest days to allow our bodies to catch up with our ascent. You will need to be fit and healthy, but you won't need to be a world class athlete," Ken added.



EVEREST ASSAULT

WORLD RECORD FLIGHT

SHARE THE DREAM OF A POLIO FREE WORLD
Having already flown off Mt Cho Oyu, Berry Rotarian Ken Hutt is now planning an ASSAULT ON EVEREST ... all to raise funds to help END POLIO NOW.

YOU CAN JOIN KEN IN A TREK TO BASE CAMP!
Join Ken in an escorted trek to Base Camp in 2019 as he acclimatizes for his assault on Everest.

To find out more on how you can go to Everest and support the END POLIO NOW quest:
Contact Ken - M: 0418 205 225 E: ken.hutt@outlook.com

END POLIO NOW

For Ken, there is more to this venture than just leading a team to Everest Base Camp. He is taking on a bigger challenge for PolioPlus ... by attempting a World Record paraglide assault from the summit of Everest. He currently holds the Australasian Record for the highest paraglide when he flew off the World's sixth highest mountain in 2014.

**To find out more,
contact Ken Hutt on
0418 205 225.**



Small Farm Field Days Winners

The Rotary Club of Berry recently held its 7th annual Berry Small Farm Field Days.

In a competition to find ten 'furry friends' located around the Showground the first correct entries drawn were from Mila Martin and Harry Parker. Also, students from Berry Public School participated in a colouring-in competition with the winners in the 7 years and Under category being 1st Molly Hinton, 2nd Dylan Hole and 3rd Eva Chalker. In the Over 7 years, the winners were 1st Harry Mills, 2nd Lennox Morrow and 3rd Zoe Ardil.

The Rotary Club of Berry thanks all Field Day sponsors including Gold Sponsors – Millpaca and 2ST/Power FM; Silver Sponsors – Berry Vet Clinic, Shoalhaven City Council, Huntingdale Park Pindan and the Local Land Services; Bronze Sponsors – Ray White Real Estate, Simmark and Shoalhaven Party Hire; and Supporters – Berry Pharmacy and Strongbuild. This is the Club's largest annual fundraiser with proceeds going to various community, youth and international activities, along with 10 percent going into an Emergency Relief Account. Drought relief has been a recent focus of the Club, being mindful that many local farmers have also been experiencing tough times. Consequently, the Club's Emergency Relief funds were recently used to pay for truckload deliveries of hay to local dairy farmers.

Chair Yoga Classes

for the wellbeing needs of the mature body

- * stretch and strengthen without strain
- * improve posture, balance & stability * better breathing
- * relax body & mind



**Energising Chair Yoga
Wednesdays**

**St Luke's Church Hall, Berry
9.30 - 10.30 am
Cost: \$15**

**Gentle Seniors-Tuesdays
(phone for details)**

No classes 1st week of month



**Contact Marilyn - Ph: 0412 244 735 E: info@marilynmartin.com.au
www.marilynmartin.com.au**

CONSERVATION COMMITTEE FOR RAILWAY PRECINCT



The Committee has received a reply from the Minister for Transport and Infrastructure, Andrew Constance through Gareth Ward on 29th August, 2018.



This letter stated: "I am further advised that Transport for NSW is considering ways that the building (the Berry Station Master's building) might be able to be returned to community use in consultation with local interest groups and individuals. Should Mr Richard Wolfson, A/Executive Manager Strategic Property Services at Transport for NSW." The Committee is following this up and we are going to become involved in these discussions.

SHOALHAVEN CITY COUNCIL NEWS FROM BERRY

THE BERRY FORUM IS THE COMMUNITY CONSULTATIVE BODY

The following Development Applications and determinations have been notified during the month. They are also placed on the Community Noticeboard and posted on the Forum website www.berryforum.org.au Details of applications, including submissions, can be viewed on Council's website at www.shoalhaven.nsw.gov.au and select **DA Tracking**.

	DEVELOPMENT APPLICATIONS RECEIVED	ADDRESS	LODGED
DA18/1902	Alterations and additions	10 Pulman Street	16-Aug
DA18/1917	Inground swimming pool	218 Bundewallah	20-Aug
DA18/1935	Detached dual occupancy	79B Kangaroo Valley Road	22-Aug
DA18/1948	Swimming pool	60 Crago Rise Wdhl	24-Aug
DA18/1957	Alterations and additions	48 Pr Alfred Street	28-Aug
DA18/1979	Alterations to bakery	Old Creamary Lane	30-Aug
DA18/2007	New detached storage shed	2 Coomonderry Rg	7-Sep
DS18/1394	Proposed decking and pergola	3 Parker Cr	11-Sep
	DEVELOPMENT APPLICATIONS DETERMINED		
DA18/1386	Urban dwelling additions	130 Kangaroo Valley Road	11-Apr
DA18/1529	Detached Habitable space over existing garage	498A Woodhill Mountain R	15-May
DA18/1776	Inground fibre glass swimming pool	62C Kangaroo Valley Road	17-Jul
SF10650	Six lot strata Title subdivision	150 North Street	24-Aug
DS18/1114	Two lot subdivision	11 North Street	20-Mar
DA18/1390	Proposed tourist cabin	74 Devitts Lane	11-Apr
DA18/1386	Urban dwelling additions	130 Kangaroo Valley Road	11-Apr

<div>  <div>Reference Guide</div>  </div>	
SUBJECT	DETAILS
Chemical Recycling	Agricultural and veterinarian chemical disposal Agsafe ChemClear program 1800 0080182 – agsafe.com.au
Recycling for businesses	Business Recycling 1300 763 768 businessrecycling.com.au
Mattress Recycling	Mission Australia have a depot in Bellambi. Cost \$25 to drop off. 1800 763 852/ softlanding.com.au . \$28 charge at the Berry Waste Depot.
Fridge Buyback program	For eligible households, free collection and \$25 rebate. 1800 708 401 fridgebuyback.com.au If you're not eligible for the program, the Berry Depot charges \$12 to take old fridges.
Battery recycling	Berry Waste Depot and Aldi Supermarkets.
Out of date medications	Don't put in landfill or wash down the sink. Return to place of purchase or local chemist.
Mobile phone recycling	Drop off points for Mobile Muster can be found at Post Offices nationally. Closest retail outlets in Nowra are the Optus or Telstra shops, Officeworks, and Shoalhaven Council Administration centre. 1300 730 070 www.mobilemuster.com.au Greener Mobile buys old mobile phone (along with tablets and smart watches) and pledges to plant a tree for every device they recycle. 1300 128 900 greenermobile.com.au
Energy saving tips	energyrating.gov.au livinggreener.gov.au 10percentchallenge.com.au/household-tips/ energy.gov/energysaver/energy-saver
Ethical shopping	behindthebarcode.org.au and goodonyou.com.au
Council workshops	Shoalhaven run free courses on garden waste recycling and other topics. They fill quickly, so you must book. Check the website for upcoming courses. calendars.shoalhaven.nsw.gov.au/Waste-Management-Events
Recycling / reuse at local shops	Some retailers may fill your own containers for take away food, egg cartons may be taken back to the place of purchase for reuse, and original containers. Flavours Shoalhaven refill Morella Grove olive oil glass bottles. Leaf Thai restaurant will fill your own containers when you order take away food.
Sharps Disposal	Medically generated syringes, needles and sharps can be disposed of for free at the Berry Pharmacy. Take your sharps in a sealed puncture resistant container. The pharmacy will also safely dispose of out of date medication.
Alternatives to plastic	Plastic bags for dog waste; buy compostable cornstarch-based bags like those at www.goinggreensolutions.com.au Bin liner bags; wrap messy scraps in newspaper. Rinse out bin as required. Drinking straws; buy a set of reusable toughened glass / metal and keep one in each of your family's bags. www.shopnaturally.com.au Choose wooden clothes pegs.
Environmentally conscious brands to support	IGA stocks: If You Care (household cleaning, cooking and storage products, toothbrushes); Ansell eco-rubber gloves; Ecostore cleaning products; Safe toilet paper (paper wrapping). Nourish Kitchen + Lifestyle stock beeswax wraps for food, as well as kits to DIY; White Magic cleaning and food storage products; Keepcups, Avanti, Tealogy, Casa Barista and Earth Bottles for your take away coffees and other beverages.
Mobile Library	Shoalhaven Council has a mobile library service. The bus can be found in Princess Street just past the School of Arts building, every Friday from 2.00 pm to 4.00 pm. Borrowing books and DVDs is a great way to read / watch more without having to buy more stuff.

Berry Restaurants & Cafes, Functions & Catering Guide

RESTAURANTS & CAFES

HEDGEHOGS COFFEE SHOP

4/98 Queen Street, Berry - t 4464 3051

7 days - 8am to 4pm

www.hedgehogscoffeeshop.com.au

SAVANNAH CAFE

Stan Burt Arcade, Berry - t 4464 3880

Please note our NEW opening hours

Closed: Tuesday

Lunch: Everyday from 11am except Tuesday's

Breakfast: Weekends & Holidays ONLY from 9am

Dinner: Friday and Saturday nights from 5.30pm - bookings are essential!

FUNCTIONS & CATERING

BERRY COURTHOUSE AND GARDENS

Corner Victoria Street and

Albany Street Berry 0458 369 266

www.berrycourthouse.org.au

functions@berrycourthouse.org.au

Facebook Berry Courthouse

Functions, Weddings, meetings inside historic Courthouse and in purpose designed gardens.

SAVANNAH CAFÉ

Stan Burt Arcade (shop 5 - in the arcade behind Cuckoo Corner)

t 4464 3880

www.savannahcafebar.com

Facebook:

facebook.com/savannahcafebar

If you would like your restaurant listed here please contact Nancy Davies
0428 037 572 or Email
towncrier@berryalliance.org.au



GET IN TOUCH WITH THE EDITOR,
NANCY DAVIES, TO FIND OUT HOW.
TOWNCRIER@BERRYALLIANCE.ORG.AU
OR 0428 037 572

Calendar of Events

SEPTEMBER / OCTOBER

18 September - Tuesday - Berry & District Garden Club monthly meeting, 7.30pm in St Luke's Church Hall, Princess Street, Berry

23 September - Sunday - Wollongong Gospel Choir will present a Concert of Southern Gospel Songs in Berry Presbyterian Church, cnr Victoria and Alexandra Streets at 2.00 pm. Cost is \$20 and includes afternoon tea. Proceeds are to support SECET.

25 September - Tuesday - The Zonta Club of Berry dinner meeting - 6.30 for 7pm - Hotel Berry. Book with Cecilie Lewis on 4464 3913.

4 October - Thursday - ADFAS Lecture - Colour and Brilliance: Women Stained Glass Artists. Thursday 7.30 pm at The Berry School of Arts, Alexandra Street, Berry.

5 October - Light the Night, Apex Park Berry. There will be kids entertainment from 5.30pm, a sausage sizzle donated by the IGA, live music, coffee and a bake sale. The lantern walk will commence at 7.30pm and the event will finish at 8pm. See article for more information.

7 October - Sunday - DAYLIGHT SAVINGS STARTS

6 - 7 October - Saturday & Sunday - The fourth annual Berry Jazz Festival.

Full details and ticket bookings at - www.sima.org.au. See page 4 for more information.

8 - 21 October - Berry Gardens Club Festival - www.berrygardens.org.au

See Page 17 and 27 for more information.

18 October - Tuesday - 10 am - 2 pm Berry Masonic Village Open Day. Enjoy a BBQ, our Spring Garden Festival and discover what aged care is really like today. 41 Albany Street, Berry. 02 4464 2765.

21 October - Sunday - Sunday 21st October - A community forum with Professor the Hon. Bob Carr on Australia's aid program and foreign affairs along with a Berry Book Launch of Bob's latest book, a memoir titled "Run for Your Life" Talk and afternoon tea at the Berry Courthouse commencing at 2.30 - \$15 pp then a dinner at the Hungry Duck at 6.30pm. \$200 pp. Proceeds to the ALP Candidate for Kiama Andy Higgins. See advert this Town Crier or ring 0439 965 354.

21 October - Sunday - Friends of Meroo Union Church will be conducting their regular Monthly Service at 2pm. Non-denominational, all most welcome. Afternoon Tea follows the service - Cnr Boxells Lane & Princes Hwy, Meroo Meadow. Contact Rae 4448 6048.

23 October - Tuesday - The Zonta Club of Berry dinner meeting - 6.30 for 7pm - Hotel Berry. Book with Cecilie Lewis on 4464 3913.

24 October - Wednesday - 10 am Coffee and Friends host special guest speaker. Please come along for a great morning. Everyone is welcome! The venue is Wesley hall at the Uniting Church, 77 Albert Street.

REGULAR EVENTS:

Mainly Music - for preschool-aged children and their carers.

Every Tuesday during term time at 10am. Venue Berry Community Church, Schofields Lane. \$5.

The Berry Computers for Seniors meets in the Berry Uniting Church hall on the first and third Wednesdays of each month from 9.00 - 10.30am.

The 'Third Wednesday Book Group' will meet in the Community Library June from 4-6pm.

We bring along our favourite books or talk about our favourite authors and enjoy drinks and nibbles along the way. Everyone is welcome.

Gentle Chair Yoga - Every Tuesday 9.30 -10.30am except the first Tuesday of the month. Phone 0412 244 735 for class details.

Energising Chair Yoga - Every Wednesday 9.30 -10.30am at St Lukes Hall, except the first Wednesday of the month. Phone 0412 244 735 for details. Class includes strength, flexibility and balance whilst sitting or standing using chair as support. \$15 class. No term fees.

Dancing for Joy - Every Thursday 9.30 -10.30am at Berry Uniting Church Hall, except the first Thursday of the month. Phone 0412 244 735 for class details Suitable for everyone. No partners needed. Variety of dance styles to exercise your brain, improve balance, increase vitality and Joy. \$15 class. No term fees

FUTURE DATES

3 November - Saturday - Men's Shed Garage Sale.

18 November - Sunday - Friends of Meroo Union Church will be conducting their regular Monthly Service at 2pm. Non-denominational, all most welcome. Afternoon Tea follows the service. Cnr Boxells Lane & Princes Hwy, Meroo Meadow. Contact Rae 4448 6048.

Annual Events Guide for Berry 2018

For more information regarding each event please refer to the community group listing on the next page.

Registered Community Groups organising annual events are welcome to contribute and advise of further information or changes to listed information.

MONTH	EVENT
RECURRING MONTHLY EVENTS	<p>First Sunday of the Month</p> <ul style="list-style-type: none"> • Penwood Railroad Inc, a scenic miniature railway open from 10:30am till mid afternoon. 215A Princes Highway - Jaspers Brush NSW - Ph: 02 4464 1201 • Berry Country Fair (Berry Markets). Approximately 200 stalls selling handmade products, arts and crafts, fresh produce and more. Berry Showground
JANUARY	
FEB	131st Annual Berry Show – 1st & 2nd Feb 2019 Berry Showground
MARCH	
APRIL	ANZAC Day Youth Week Easter Celebrations
MAY	Berry Celtic Festival, Berry Showground National Motoring Heritage Day, Berry Showground
JUNE	
JULY	
AUGUST	4th & 5th - Annual Camellia and Floral Show
SEPTEMBER	Berry Small Farm Field Day
OCTOBER	18-21st - Berry Garden Club's Annual Garden Festival
NOVEMBER	Remembrance Day 3rd November Berry Men's Shed Annual Garage Sale
DECEMBER	Berry Merry Christmas Carols in the Park, Apex Park Rotary's New Year's Eve Fireworks Berry Showground

BUSH FIRE DANGER PERIOD AND FIRE PERMITS

A Fire Permit will be required for burning activities during the Bush Fire Danger Period which started on **1st September 2018**. Fire Permits help ensure fire is used safely and minimise the danger to you, your property and the community.

THE KEY THINGS TO REMEMBER

- You need a fire permit if it's the Bush Fire Danger Period.
- Just because it's the Bush Fire Danger Period doesn't mean you can't use fire - but there are restrictions to ensure fire is used safely.
- Getting a permit is free and easy. Contact Fire Control Centre on 4424 4424.
 - There are heavy penalties if you don't follow restrictions or rules.

40 KM PER HOUR SPEED LIMIT FROM 1 SEPTEMBER

Please be aware that vehicles are now required to slow to 40 km per hour when passing a stopped emergency vehicle with red/blue flashing lights. This came into effect on 1 September 2018.

For more information go to <https://www.rfs.nsw.gov.au/fire-information/BFDP>

Light the Night

Light the Night is the Leukaemia Foundation's beautiful evening lantern walk, where Australians come together to transform the darkness into a sea of glowing light to beat blood cancer.

Last year our community in Berry raised over \$5000 for vital research, help for sufferers and help for families whose lives are affected by blood cancer. Lanterns are raised high in a moving ceremony to pay tribute to those facing their own blood cancer journey and to remember loved ones lost.

Before we raise our lantern in solidarity, we're raising money to change lives – and we need your help. We've pledged to help the Leukaemia Foundation fund urgently needed medical research, to help more people survive and ultimately beat leukaemia, myeloma, lymphoma and other blood disorders.

October 5th 2018, Apex Park BERRY. There will be kid's entertainment from 5.30pm, a sausage sizzle donated by the IGA, live music, coffee and a bake sale. The walk will commence at 7.30pm and the even will finish at 8pm.

ARTICLE PROUDLY SPONSORED
BY THE BERRY ALLIANCE

Berry Gardens Festival

Thursday 18th to Sunday 21st

OCTOBER 2018



Gardens Open 10.00am-4.00pm Daily

www.berrygardens.org.au

\$20 for all 8 gardens
• Valid over the four days

\$5 for individual gardens

Free for children under 18

TICKETS AVAILABLE AT ALL
THE GARDENS AND AT APEX PARK

Community Groups

BERRY COMMUNITY GROUPS

Berry Alliance Inc. 0449 569 059
PO Box 202 Berry 2535
info@berryalliance.org.au
www.berryalliance.org.au

Berry Alliance Town Crier 0428 037 572
PO Box 202 Berry 2535
towncrier@berryalliance.org.au
www.berryalliance.org.au

Berry Chamber of Commerce & Tourism Inc. 4464 3122
PO Box 216 Berry 2535
info@berry.org.au www.berry.org.au

Amnesty International Berry Local Action Group 4464 2879
PO Box 397, Berry
Contact Susan Locke
info@berryamnesty.happenings.id.au

Australian Red Cross 4464 2479
Honorary Secretary -
Margaret Walsh 21 Windsor Drive Berry
1st Wednesday each month at 2.00pm
Berry Uniting Church

Berry Alcoholics Anonymous 1300 903 392
Meets every Thursday Night at 7.30pm,
Uniting Church Hall Annex,
77 Albert Street, Berry - Garry: 0420 932 494

Berry Al Anon Family Group For family & friends of problem drinkers 4448 8231
Meets in the Friendship Rooms of the Uniting Church 77 Albert Street Berry on Mondays at 7pm

Berry Forum (Community Consultative Body)
www.berryforum.org.au
2nd Thursday bi-monthly 7.30pm at the School of Arts Berry

Berry Community Activities Centre Inc. 4464 1476
Berry Community Craft Cottage
12 Prince Alfred St Berry 2535
1st Monday Monthly, 5pm @ Muir House
berrymarkets@bigpond.com

Berry Courthouse Conservation Committee 0458 369 266
PO Box 218 Berry 2535
2nd Monday Bi-monthly at 5.30pm
at the Berry Courthouse
functions@berrycourthouse.org.au
www.berrycourthouse.org.au

Berry Evening View Club 4464 1191
Secretary, PO Box 275
sel4957@bigpond.net.au
Meets 3rd Wednesday monthly, 6.30 pm
at Berry Bowling Club

Berry Masonic Village Auxiliary Inc 4464 1774
Mail: 42 Albany Street, Berry, NSW, 2535
3rd Wednesday monthly, 9.30am in Activity Hall, Albany Lane, Berry Masonic Village

Berry Meals on Wheels 4464 1604
PO Box 221 Berry NSW 2535
3rd Monday monthly at 9am RSL Hall Berry

Berry Men's Shed 4464 3956 / 4464 2619 A.H
PO Box 103 Berry 2535
richardcwiseman@hotmail.com
Tuesdays and Thursdays 9am-4pm
North Street Berry www.berrymensshed.com.au

Berry RSL Sub Branch
PO Box 3307 North Nowra 2541 -
stuartfchristmas@gmail.com
1st Tuesday Monthly at 9.30am
Sub Branch Hall 26 Alexandra St Berry

Berry Rotary Club 0408 979 337
PO Box 81 Berry 2535
barker_killaloe@hotmail.com
Every Thursday 6pm for 6.30pm at
Bowling Club - www.berryrotary.org.au

Berry Show Society Inc. 4464 1567
PO Box 173 Berry 2535
Meet 1st Tuesday monthly at
Committee Rooms at the Showground
berryshow@virtualcity.com.au
www.berryshow.org.au

Berry Showground Management Committee
PO Box 443 Berry NSW 2535 -
berryshowground-camping@gmail.com
Meet 2nd Monday Bi-monthly 7.30pm
Old Council Chambers
24 hour Caretakers / Bookings
Caretakers 0427 605 200

Boomerang Bags Berry 0416 181 543
Meetings: 1st Tuesday of the month:
Committee Rooms, Berry Showground.
Contact: Katrina Underwood 0416 181 543
Contact Elizabeth Dubbelde 0431 663 189

Country Women's Association - Berry Branch
PO Box 321 Berry 2535
2nd Friday each month at 12.30pm
in the CWA Rooms, Victoria Street
Contact Emily Boorer 0417 423 018

Conservation Committee for the Berry Railway Station Precinct
Meets fortnightly at the Berry Museum
Contact: sandraberner@hotmail.com

David Berry Hospital Auxiliary 4464 1774
PO Box 285 Berry 2535
bke25349@bigpond.net.au
2nd Monday Monthly, 12.30pm
David Berry Hospital Conference Room

Freemasons Lodge Broughton 131 4421 7346
PO Box 2092 Bomaderry NSW 2541
Secretary: John Dyason
lodgebroughton131@gmail.com

Jaspers Brush Airport Action Group Inc.
www.takeaction.org.au
PO Box 428 Berry NSW 2535
Meeting as convened

Lodge Broughton 131 4421 8026
P.O. Box 2092 Bomaderry 2541 NSW
lodgebroughton131@gmail.com
Meets 1st Wed. of each month except
Jan. at the Agricultural Hall Berry

Probus Club of Berry 4464 3525
PO Box 68 Berry 2535
berryprobus@gmail.com
Meets 2nd Tuesday monthly, 9.30am
Berry Masonic Village Hall

Shoalhaven Poultry Group 0410 548 704
161 Kangaroo Valley Road
1st Wednesday each month above address
info@shoalhavenpoultry.com.au
www.shoalhavenpoultry.com.au

St. Vincent de Paul Society Client Help Line: 4421 0390
PO Box 77 Berry - Ph 4464 3940
Vinnies Boutique Shop 117b Queen St Berry
Conference meets every 1st Mon.
7pm St. Patrick's Hall

Zonta Club of Berry
Ph 4464 3913 (Cecilie Lewis)
or 4464 2653 (Leonie Winlaw)
PO Box 302 Berry 2535
Email: berry@zontadistrict24.org
www.zontadistrict24.org
Meets 4th Tuesday monthly for dinner

ARTS

Berry School of Arts
Office open Thurs and Fri 10am till 3pm.

Australian Decorative Fine Arts Societies - Shoalhaven 0429 549 942
PO Box 269 Berry NSW 2535
www.adfas.org.au/shoalhaven/
Monthly, 7.30pm at The Berry School of Arts

Berry & District Historical Society Inc 4464 3097
PO Box 153 Berry 2535
berrymuseum@bigpond.com
www.berryhistory.org.au

Berry Silver Band (est. 1897)
Owen 4464 1250 / Kaye 4465 1240
6 Clarence Street Berry 2535
kayecj@westnet.com.au
Meet Monday evenings 7.30-9.30pm,
Agricultural Hall, Berry Showground

Berry Spinners and Weavers
Contact the secretary (Alison) on 0422 760 363
PO Box 377 Berry 2535
berryspinnersandweavers@gmail.com
Thursdays 10-12noon at Berry Showground Hall

Cantares: Community Choir
Monday 7.30 - 9.00pm
Scots' Presbyterian Hall, Alexandra Street Berry
Contact: Peter Dalmazzo 4448 6164

Knit with Love
Lyn 4464 3651 c/- 34 Princess St Berry 2535
terryandlyn@gmail.com
Meets Every Friday 1pm - 3pm
St Luke's Anglican Church Hall

RedBerry Quilters
Meetings held on the 4th Friday of each month
9.30am-1.30pm. Sewing Days held on the
2nd Friday of each month 9.30am-1.30pm at
St Luke's Anglican Church Hall, Princess Street
Please contact mail to:
secretary@redberryquilters.org

CHURCHES

Berry Community Church 4464 2315
8 Schofields Lane Berry
Services 9.00am, 10.00am and 5.00pm
info@berrycommunitychurch.org

Berry Uniting Church 4464 2904
77 Albert Street Berry
Services at 9.30am
berryuniting@gmail.com

Merero Union Church 4448 6048
Monthly service at 2pm
(3rd Sunday of the month)
Corner of Boxells Lane & Princes Hwy,
Merero Meadow. Contact Rae 4448 6048

St. Luke's Anglican Church 4464 1058
68A Princess Street, Berry 2535
office@berry.anglican.asn.au
www.berry.anglican.asn.au

St. Patricks Catholic Church 4423 1712
Albert St. Berry - Normal Mass times:
Sunday 8am Tuesday 5.30pm
Community Group PO Box 304 Berry meets
2nd Monday 7pm St. Patricks Hall

Scots' Presbyterian Church in Berry
E. isaac.jung@hotmail.com 0405 139 031
H. 81 Victoria St Berry

EDUCATION AND PLAYGROUPS

Berry Apple Users Group 0416 168 638
P.O. Box 103, Berry, 2535
Meets at 7.00pm on the 2nd Tuesday of the
month (except January) at
Berry Uniting Church Hall,
77 Albert Street, Berry
Email: berryappleusersgroup@gmail.com

Berry Community Pre-school 4464 1764
PO Box 143 Berry 2535
berrypreschool@bigpond.com
www.berrypreschool.org.au

Berry Computers for Seniors 4421 3270
PO Box 103 Berry 2535
1st and 3rd Wednesdays of each month,
9.00 - 10.30am, Uniting Church Hall,
77 Albert Street, Berry

Berry Ethics Society 0451 153 332
PO Box 363 Berry - Meets 1st Monday of each
month at the Berry Hotel

Berry Playgroup
Berry Community Church Hall
Schofields Lane, Berry. Fridays 10.00-12.00
Facebook: The Berry Playgroup
Email: berryplaygroup@hotmail.com

Berry Public School P&C Association 4464 1158
PO Box 222 Berry 2535
berrypandc@gmail.com

Mainly Music 4464 1693
Berry Community Church Hall -
for children under five and parent /carers
Meets Tuesdays during school term
10-11.30am \$5 per family

GARDENING AND LAND CARE

Berry & District Garden Club 4464 1191
PO Box 122 Berry 2535
3rd Tuesday Monthly, 7.30pm
St Luke's Church Hall, Princess Street
Mary Seelis - Secretary
www.berrygardens.org.au

Berry Landcare 4464 2241
PO Box 422 Berry NSW 2535
berrylandcare@gmail.com
See monthly article for working bees

Berry Public School Plant Propagation Nursery
Lyn 02 4464 3911
Meet Thursday afternoons during school hours
lyn-clark@outlook.com.au

Brogers Creek Landcare 4465 1482
53 Wattamola Road Wattamola NSW
Last Saturday of each month 2.30-4.30pm

Gateway Community Garden
141 Woodhill Mountain Road
All welcome, plots available.
Contact: Tom Darby 4464 2859

Hands Across NSW Inc 4446 0567
PO Box 162 Cambewarra NSW 2540
Meets 1st Sunday, monthly at Broughton Lodge,
Berry Agriculture Hall

POLITICAL GROUPS

Australian Labor Party Berry 0429 012 796
Shoalhaven Heads Branch
Meets 2nd Wednesday each month,
6.30 pm Hotel Berry
secretarybshalp@gmail.com
PO Box 474 Berry 2535

Liberal Party of Australia - Berry Branch
0412 550 480 hartwell@bigpond.com
Meets 1st Monday of the month
06.30pm for 07.00pm start at Berry Hotel

RECREATION

Berry Bridge Club INC 4464 3009
PO Box 366 Berry 2535
mcorran@shoalhaven.net.au
Meets Saturdays @ 12.45pm-4.30pm at the
Masonic Lodge Community Hall

Berry Camera Club 0488 031 961
Meetings on 4th Wednesday of Each Month
6:00pm @ Berry Bowling Club
Info: www.berrycameraclub.com
fb:BerryCameraClub

Berry Crafters & Quilters 4464 3788
Meets each Wednesday 10am-4pm at
Muir Cottage, Prince Alfred Street

Penwood Rail Road Inc. 4464 1201
B215a Princes Highway Jaspers Brush 2535
Running day 1st Sun monthly - visitors welcome

Shoalhaven Historic Vehicle Club Inc. 4464 1723
PO Box 1, Nowra NSW 2541

SPORT

Berry Hockey Club 0412 218 704
PO Box 4055 Nowra East NSW 2541
www.berryhockeyclub.com.au

Berry Netball Club 0417 285 789
1 Barwon St Bomaderry Meets monthly at the
Great Southern Hotel MT816834@bigpond.net.au

Berry Men's Bowling Club
Berry Men's Bowling Club
PO Box 139 Berry NSW 2535 Club 4464 2995
President: L McNamara 4464 1868
Bowls Organiser: D Lambert 4464 2332
Bowls Bookings: 0475 768 249

Berry Junior Mixed Touch Football 0431 530 543
7 Boran Place Berry becantom2@bigpond.com
School term 4 - Thursday 4pm till 6pm at the
Berry Sporting Complex, North Street Berry

Berry Riding Club 4464 1143
445 Coolangatta Road Berry 2535
1st Tuesday monthly at the Berry Hotel
jasiy@bigpond.net.au www.berryridingclub.com

Berry Shoalhaven Head Rugby
League Football Club
First Wednesday evening of the month at
The Berry Hotel - 7pm Great Southern Hotel,
Berry. Email: berryjuniorleague@gmail.com
www.facebook.com/groups/325991097440833/

Berry Shoalhaven Heads Cricket Club
0422 688 901
PO Box 206 Berry NSW 2535
www.bshcc.nsw.cricket.com.au
2nd Monday of each month
during cricket season at the Berry Hotel

Berry Shoalhaven Heads Junior League
0414 973 795
PO Box 162 Berry 2535 bshjrflc@hotmail.com
First Wednesday of the month
7pm at the Berry Bowling Club

Berry Tennis Club
PO Box 133 Berry NSW 2535
e: berrytennis@hotmail.com
Meet 7pm second Thursday of every second
month at Clubhouse at Tennis Courts

Berry Women's Bowling Club
Meet Tuesdays and Thursdays 9am during
daylight savings; 9.30 in winter @ Berry Bowling
Club. Contact Heather Fealy 4464 3624 or
Pam Tulloch: 4464 2284

Diamond Calisthenics Club
Jodie Dearsley 0414 655 129
Classes for ages 3-100 held Tuesdays at Berry
School of Arts, Cnr Alexandra & Princess Sts
www.diamondcalisthenics.com
diamondcalisthenics@hotmail.com

Shoalhaven Heads Surf Life Saving Club
Mackintosh Street Shoalhaven Heads
www.headssurf.com.au Facebook: Shoalhaven
Heads Surf Life Saving Club. Phone:
0432 331 915 or info@headssurf.com.au

EMERGENCY 000

Police Assistance Line (non-urgent Police reports) 131 444
Berry Police 4464 2175 - Fire and Rescue NSW 4464 1008 or 000
Rural Fire Brigade (Broughton Vale) 4464 1522
SES - For Emergency help in floods and storms 132 500



Berry
Masonic Village
Residential Care & Retirement Living



OPEN DAY 2018

Thursday 18 October
10am-2pm

Join us for a fantastic day exploring our village. Enjoy a BBQ, our Spring Garden Festival and discover what aged care is really like today.

41 Albany Street, Berry
02 4464 2765



High Tea at St Luke's Berry

The advent of Spring on 1 September brought a fine, if windy day to beautiful Berry to celebrate the coming of the season and the glory of God's creation. For the 110 lovely ladies attending the High Tea at St Luke's Church Hall this was a perfect greeting of the new beginnings and to hear the excellent address by the guest speaker, back by popular demand, Colleen Hirst.

Colleen is a Psychologist and Family Therapist and she held the ladies enthralled by her witty and impassioned delivery of wisdom and humour with her topic: "God and relationships. What to do when things get messy".

Of course, the ladies were privileged to enjoy the magnificent array of delicacies prepared by the dedicated team from St Luke's and they are to be congratulated for such a fine effort. The edible delights, decorations and wonderful music were a credit to the team's organisation and work.

We at St Luke's are grateful for the attendance, efforts and enjoyment of all concerned and hope that the spreading of the Christian message in this delightful way can be continued for the years ahead.



ST. LUKE'S
ANGLICAN CHURCH

68a Princess Street Berry

Serving the Berry community since 1873

Acting Rector Bishop David Mulready

Join us for Sunday services

8:00 am (Traditional) or 9:30 am (Families)

or the 1st, 3rd and 5th Thursdays at 11:00 am (Communion)

Phone 4464 1058 or Email office@berry.anglican.asn.au

For information on activities www.berry.anglican.asn.au

LOCAL SET TO RAISE FUNDS FOR PROSTATE CANCER

Berry Pharmacy employee, Trish Mills, and childhood friend Tricia Brett are participating in the 2018 Inaugural Outback 4WD Adventure for the Prostate Cancer Foundation of Australia.

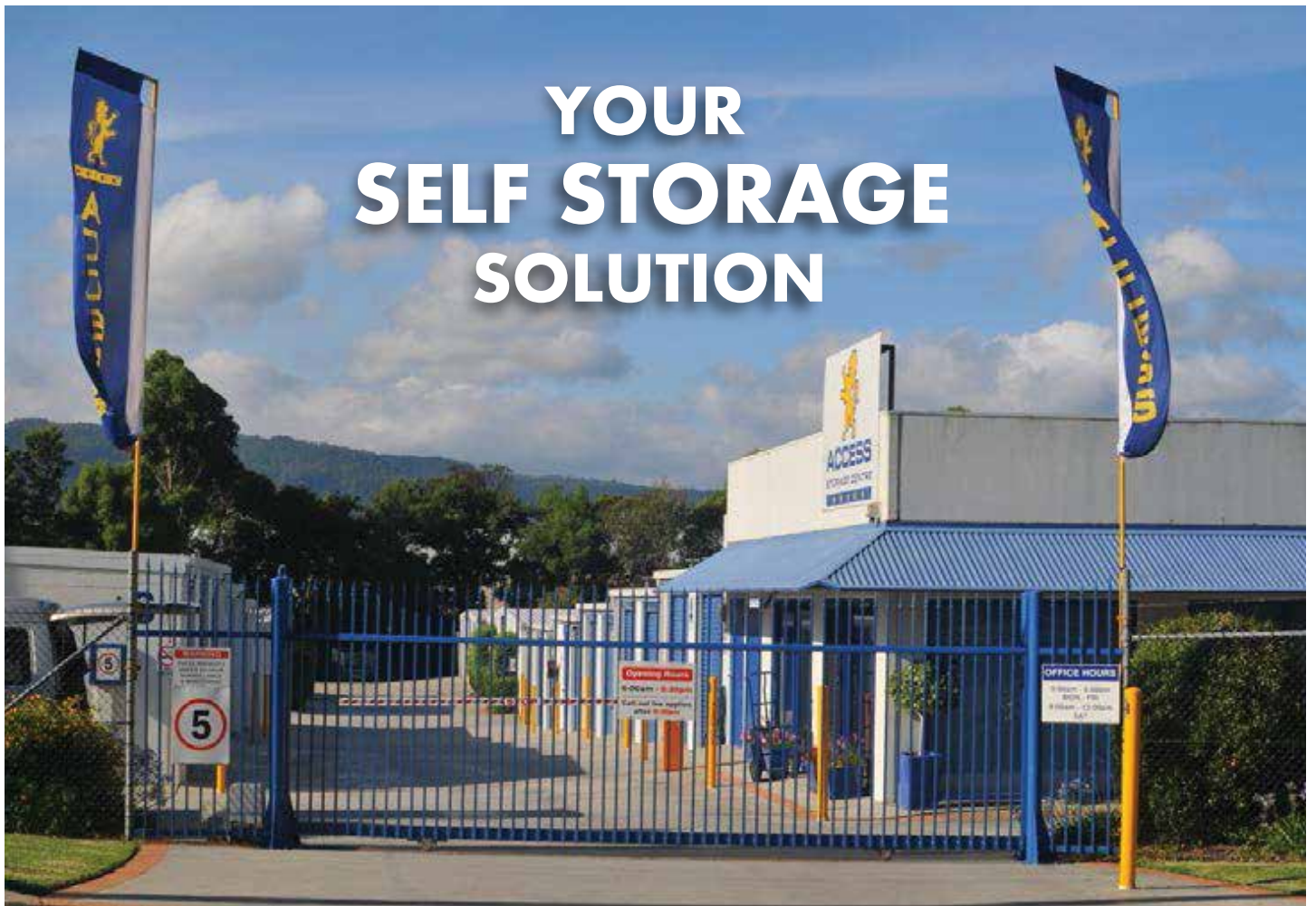
The Berry Pharmacy is sponsoring Trish and her vehicle will be sporting the pharmacy banner.

To donate you can contact Trish through the Berry Pharmacy or by going to www.prostate.org.au and click on "Get Involved".

All donations are tax deductible and go directly to Prostate Cancer Foundation – no expenses are deducted from these donations, 100% of all donations go to assist with prostate cancer research.



YOUR SELF STORAGE SOLUTION



1st MONTH FREE

2nd Month 1/2 Price *

Call Now

- Individually Alarmed Units
- 7 Days / Week Access

OPENING SPECIALS

- Packing Supplies
- Climate Control Wine Storage
- Commercial and Residential
- FREE move in trailer
- Solar Powered with TESLA Battery Storage

NEW Trade Units Available

Customised to your lighting and power needs
Call now to secure yours today
FREE Goods despatch and retrieval service



**ACCESS
STORAGE**

*TERMS AND CONDITIONS APPLY

Phone our friendly team on 4422 1955
or visit our website www.accessstorage.com.au

Access Storage - Cnr Meroo Rd and Victa Way Bomaderry

A new look for Berry Preschool

It's been a busy month at Berry Preschool. The highly anticipated outdoor learning area is finished, and the children absolutely love their new playground. Natural Habitat Landscapes, from Wollongong, did an incredible job. This fantastic addition to the Preschool was fully paid for by many years of fundraising and community donations. So once again, a big thankyou to our wonderful community. The aim was to create a natural, beautiful and inspiring environment for the children to learn, discover and enjoy the outdoors and this objective has definitely been met. Our long-term goal will be to bring the other half of the outdoor area up to the same level. The next project is the renovation of the children's bathroom, foyer and kitchen which will be carried out over the October holidays. We are looking forward to returning from the break to a fresh new look for the Preschool. Renovations are being carried out by Morrow Building Services and have been made possible by a Grant we received from the Department of Education (Early Childhood Directorate).

Berry Community
Preschool



A big night in the Preschool social calendar this term was Father's Night. The theme was "Preschool by night" which was enjoyed by many dads, grandads, preschool children and special visitors. The dress code was pyjamas!! We attempted a variety of activities by torchlight including who could make the best flying paper aeroplane, building propeller cars, decorating neck ties, building blocks and Lego creations. The photo booth proved once again to be very popular as was supper of pizza and milkshakes

Other events have included celebrating book week, an excursion to Shoalhaven Entertainment Centre to see Circus Oz and our Shoalhaven Zoo visits which have covered Australian Mammals and Pet responsibility; how to care for a variety of pets from Lizards to rabbits.



LJ Hooker Nowra



Berry 8 Alexandra Street

79 Steps from this delightful cottage to the nearest coffee shop!
Keen vendor invites offers. Contact Patrick on 0418 603 980

OCTOBER 2018

www.berryalliance.org.au

LJ Hooker Nowra

P: 02 4421 2957 M: 0418 603 980

E: patrick.tynan@ljhooker.com.au

nowra.ljhooker.com.au

5/38-44 Berry Street, Nowra NSW 2541

The Town Crier - Page 23



140 Queen St
Berry Ph:4464 2995
www.berrybowling.com.au
f : Berry Bowling Club

BERRY 6-7 JAZZ OCT 2018

berryjazz.com.au

*Celebrate the 25th Anniversary of Australian
Jazz legends Wanderlust
Saturday 6th October , Showtime 7:30pm
Tickets available at Berry Music Centre, At the
Bar or online at www.berryjazz.com.au*



BOOK YOUR OWN BAREFOOT BOWLS PARTY BOOK YOUR WORK BAREFOOT BOWLS PARTY

- Cost \$10 per person which includes bowls hire coaching and set up
- Both BBQ's can be hired for self-catering



See the bar to make
a reservation or
Ph:4464 2995



raffles!

Every Thursday, Friday, Saturday & Sunday

Drawn Thursday 7.15 Fri, Sat, Sun at 7.30

Free Trivia on Sunday

See Bar Staff For Details



*Consider Berry Bowling Club
for your next Special Event*



Lunch & Dinner - Wednesday to Sunday

Ph 4464 2388

AT LAST: SLOW FOOD COMES TO BERRY

The long established Slow Food Shoalhaven has divided into 2 groups, creating a new dynamic convivium that includes Berry, Kangaroo Valley, Shoalhaven Heads down to Jervis Bay. Slow Food is an International non profit organisation represented in 160 countries and our main aim is to support good, clean and fair food for everyone while enjoying great social and educational events. Our SF international commitment is to support the Menu for Change Project as it is well recognised that production, distribution and packaging of food is large contributor to Climate Change.

As our local initiative to encourage an increased use of locally grown vegetables Slow Food Berry 2 JB has created a weekly liaison between busy local Producers and



Chefs. Local producers can email us with info re excess local veg and a committee members advises Chefs of the available stock....and as restaurant guests we will also benefit with the fresh farm produce on our plates.

The Slow Food International Snail Trail project recognises Chefs and Producers who follow ethical principles and they will be acknowledged by a Slow Food sign on their business and on our website. These signs will be showing up locally, very soon.

Lots of exciting events are planned to enjoy local food, raise funds for education projects including a local refugee farm. Long lunches, tastings, sharing information, visiting farms and wineries ensure lots of fun.

Committee Meetings are held in Berry each month and new members are very welcome.

Our website is under construction, however Slow Food International has great information at; www.slowfood.com or Follow us on Facebook...slow food berry to jb

If you would like more information on our planned Calendar of Events or to JOIN US contact

Jenny Crosby 0424 615 948 or Marilyn O'Dowd 0416 018 977 or email us at slowfoodberry2jb@gmail.com or phone



Our special guest speaker on 24th October at 10am, is Berry resident Rob McMurdo. Rob will speak about the interesting twists and turns in his life which led him from his job working in hospitals and general practice in England before coming to Australia with his family, where he did most of his psychiatry study. After several decades in psychiatry, including forensic work, he now sits on the Mental Health Review Tribunal in his retirement.

PLEASE COME ALONG FOR A GREAT MORNING. EVERYONE IS WELCOME! THE VENUE IS WESLEY HALL AT THE UNITING CHURCH, 77 ALBERT STREET.

Berry Community Library

Volunteers and Friends of Berry Community Library joined together at the end of August to celebrate the Library's 1st Birthday. There were photos to show how far we've come from the empty shelves to ones that are laden with books so generously donated by our community. There was fun and laughter and cake and a wonderful presentation by Shona Gibson on the value of stories, especially our family stories new and old that give us a sense of belonging and connection.

The "Third Wednesday Book Group" will meet in the Community Library on the 17th October from 4 - 5.30pm. We have started to think about particular questions to focus our reading and we enjoy drinks and nibbles along the way. Everyone is welcome.

TO KEEP UP WITH ALL THE NEW THINGS THAT ARE HAPPENING, WHY NOT "LIKE" US ON FACEBOOK. JUST TYPE IN "BERRY COMMUNITY LIBRARY" AND LIKE OUR PAGE.

» LIBRARY OPENING HOURS

Monday and Wednesday 1-4pm
Tuesday, Thursday and Friday 10-1pm
77 ALBERT STREET, OPPOSITE THE IGA CARPARK, BEHIND THE UNITING CHURCH.
FOR MORE INFORMATION CONTACT JANET ON 0425 220 258



"How Friendships can make an extraordinary difference"

Connecting with the community and be ready to welcome interested new members to VIEW. Why? Well because VIEW is a National Women's organization with over 15,00 members in more than 300 communities who volunteer, raising funds to help a child in the Learning for Life Program which is done through the SMITH Family. We meet at the Berry Bowling Club on the third Wednesday of the month 6.30 for 7 pm start. We have guest speakers, fun nights and sometimes a demo but apart

from fund raising it's a good opportunity to catch up with friends and meet new ones. If you would like to come or cancel, ring Jan on 44642181 before 12noon on the Sunday before the meeting. October's coffee morning will be at The Book Shop Cafe which has changed its name to The Garden by the looks of the signs. It is held on the 1st Thurs of the month at 10.30 am. We hope to see you at one of our up and coming meetings; the more people we have, the bigger difference we can make.

We have just had our 37th Birthday night and had a lovely group of guests from other clubs for the night and we were lucky to be entertained by a local Line Dance group where one of our members participates and yes, she did an excellent job. We also held a very good trading table which will help our fundraising for the year. More coming up in the following months but that's all for now.

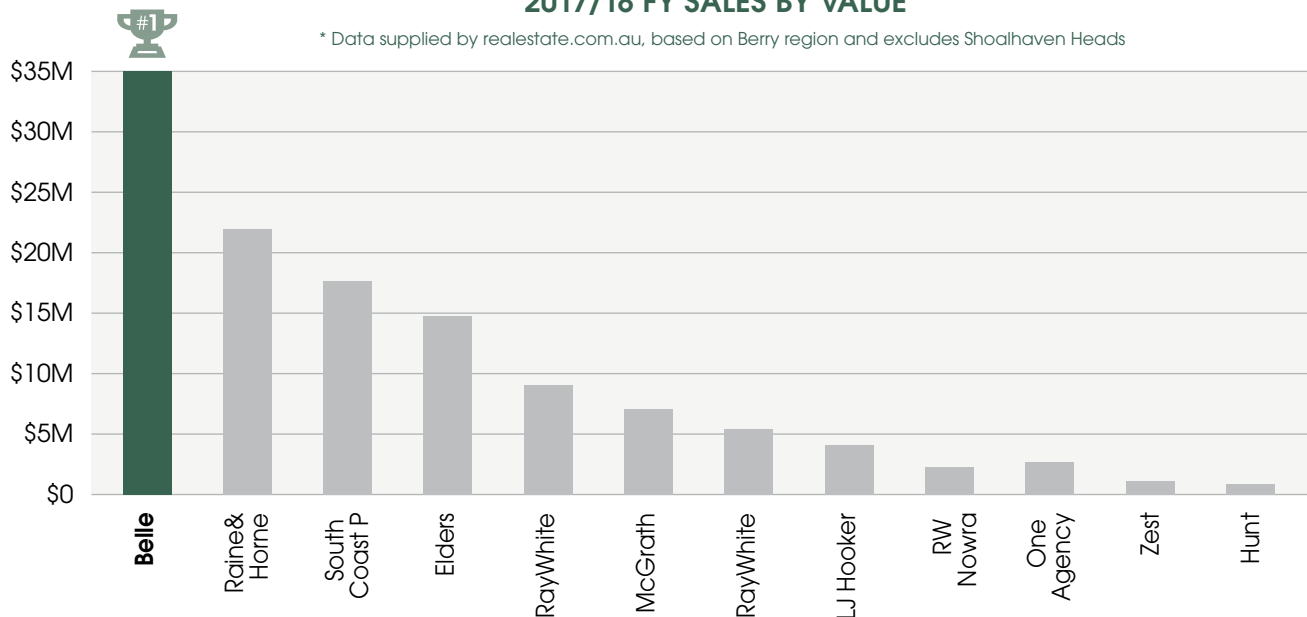
Yolande - Publicity



IN BERRY REGION FOR VALUE 4 YEARS IN A ROW

2017/18 FY SALES BY VALUE*

* Data supplied by realestate.com.au, based on Berry region and excludes Shoalhaven Heads



Gary Dale | 0418 211 917

(Principal/Licensee)

gary.dale@belleproperty.com



Nick Dale | 0419 425 166

(Senior Property Consultant)

nicholas.dale@belleproperty.com



Emily Agar | 0458 420 581

(Property Assistant/Manager)

emily.agar@belleproperty.com



Susan Dale | 02 4464 1636

(Office Manager)

susan.dale@belleproperty.com



Alison Sturt | 02 4464 1636

(Office Administration)

alison.sturt@belleproperty.com

Belle Property Berry | 02 4464 1636

122 Queen Street, Berry NSW 2535



Berry & District Garden Club News



SECRETARY MARY SEELIS 4464 1191 VISIT US ON www.berrygardens.org.au

The bright hues of spring bulbs, intermingled with the creams and oranges of the late winter flowering cliveas, boost our spirits as Berry gardens shake off the winter chill. The yellow blaze of tardy daffodils, slowed by a dry winter, and the early blues of forget-me-nots and bluebells extend the colour palette while hippeastrums stir into life, ready to put up their heads of colourful trumpets as the spring bulbs die down. Look higher and blossom trees are adding their lacy curtains of pink and white to the magnolia trees already in flower. The explosion of new growth induced by welcome rain and warmer weather is almost audible. This is the season for a slow stroll around the streets, admiring street trees and plantings in front yards. Visitors to the annual Berry Gardens Festival on 18 - 21 October will also be out for a stroll, commenting not only on garden layout and flowering beds but also on trees and borrowed views. This year there are four town gardens and three rural properties as well as the most impressive Shoalhaven Heads Native Botanic Garden to visit. The garden owners are most relieved to see their gardens stirring, autumn-pruned plants putting out new growth and annuals springing from the soil. By mid-October the spring flush will have waned, but their gardens will then have settled into their summer finery and will be at their best.

Why don't you reward the garden owners for their months of toil and put a visit to the gardens on your calendar. We love to receive visitors from afar, but we are even more delighted to see the locals out enjoying what Berry has to offer. Don't forget the club's most abundant plant stall. You will find it next to Garden 3 in Gwenda Avenue. Like the buyers at our successful recent stall at the Small Farm Field Days, you can be confident that all plants on the sales tables grow well in the local area and that prices will be low.

The club's tour to the "Carnival of Flowers" in Toowoomba from 20-25 September is rapidly approaching. A wealth of gardens and parks in and around Toowoomba will provide travellers with days of pleasure, a trip to an historic woolshed and the Bunya Mountains National Park adding interest. Past president Margaret Street will share some stories and photos from the trip at the club's October meeting.

Visitors are most welcome to join us for this presentation. Our next meeting will be held in St Luke's Church Hall in Princess Street on Tuesday, 16 October at 7.30pm. To find out more about our club, please contact our secretary, Mary Seelis on 4464 1191 or visit us on www.berrygardens.org.au



Kay and Ted Jarrett, owners of Festival Garden 3

Rental properties needed ...

as workers begin the next stage of the bypass

Elders

Berry



With the new Berry to Bomaderry highway upgrade, the area has started receiving another influx of road workers who need a place to live while they are here over the coming years.

If you have considered renting your home, now is the time to capitalise on the rising demand, which will in turn drive up potential rental returns.

Elders Berry is Berry's longest-standing real estate agency. You can expect honesty and friendly service from our experienced staff at every step. To learn about making your home available for let, get in touch with Jan today!



Jan Bailey

Property & Business
Development Manager
0459 045 700

4464 1600 • www.eldersberry.com.au • 121 Queen St, Berry

Landcare BERRY

Biodiversity:

What actually is "Biodiversity?" Often referred to, we know it is important. A nebulous concept, it first appeared in the 1980s, and came into popular usage after the Convention on Biological Diversity at the Rio Earth Summit in 1992. It is one of the nine 'Planetary Boundaries' used by scientists to define the tipping point boundaries of the support systems essential for life on earth to flourish. These include climate, fresh water, nutrient cycles, the ozone layer, the nitrogen cycle and ocean pH. Throughout the last 10000 years these have been remarkable stable creating a benign space for civilization to flourish. It is the aim of contemporary science to monitor rates of change in these systems. For Biodiversity the measure was thought to be the global extinction rate.

The enormity of this task is revealed when one asks the fundamental starting questions – How many Species are there and at what rate are they going extinct? These are almost impossible questions to answer. We all care about Polar Bear, Panda and Koala numbers. The WWF Living Planet Index shows that since 1970 the abundance of vertebrates has declined by 58%. Mammals, birds and amphibians populations are in decline. But these vertebrates are unrepresentative of life as a whole. The revealing data are found in invertebrate species, insects, fungi, algae, crustaceans and plants. These keep the ecosystem going but they are not on the radar for the average observer.

The decline in butterflies in the garden, the lack of insect splats on windscreens certainly rings alarm bells. But these are anecdotes not data. In the UK there have been declines in butterflies, moths, dragonflies. However aphid populations don't decrease no matter what we do to them. The Canadian conservation biologist Mark Vellend in 2013 published a meta-analysis of thousands of local plant's biodiversity studies from around the world. The scale of the studies ranged from continental to country to small plots. Biodiversity was stable or had increased in all studies. This was because there were more non-natives arrivals than losses of native species. What was revealed however, was global biological homogenisation. The same plants everywhere. Biological Globalization.

This leads to the hottest controversy in biodiversity science today. If a species goes extinct but is replaced by a non native that fulfils the same ecological function, does it matter? This depends on what you care about. We mourn the loss of a species. It is irreversible and it results in increasing homogeneity. Can we live with the more highly successful generalists like sparrows and lantana? Time will tell.

(Ref. New Scientist, 28July 2018)



WORKING BEES FOR OCTOBER 2018

Daylight Saving starts 7th October.

Alexandra Street Parkcare: 9-11 am
Friday 26th: Gail Paton 4448 7915.

Bong Bong Road: 9-11am Sunday
14th: Julia Woinarski 4464 2084.

Broughton Vale: 9-11am Sunday 7th:
Kelvin Officer 0427 255 417.

Bundewallah Bushcare: 3-5pm Sunday
28th: John Clark 4464 3911.

Camp Quality: 9-11am Sunday 21st:
Hugh Sheil, hugh.sheil@realtimcom.
com.au or Jeanne Highland
4464 1271.

Moeyan Hill: 3-5 pm Saturday 20th:
Bill Pigott 4464 3241 or
wpigott@bigpond.net.au

Mount Coolangatta: Nola Barker.
Mobile 0409 446 418, nolajbarker@
live.com.au. Time to be advised. Meet
at end of Roxbrough Rd, Far Meadow.

Mark Radium Park: 9-11am Friday
26th: Sue Selden, sueselden@
optusnet.com.au.

Princess St. Parkcare: 9-11am
Monday 22nd, Terry Oades
4464 3651.

Tindalls Lane: 3-5pm Sunday 14th:
Jim Jefferis 4464 2988.

Plant identification service:
Please contact Harvey Blue
4464 1880 or Ian Parker,
4448 6359.

Visit our pages at:
[www.landcare.nsw.gov.au/
groups/berry-landcare](http://www.landcare.nsw.gov.au/groups/berry-landcare) for more
on Berry Landcare and late
changes to working bee details.
Information can also be
found on Facebook.



TRADES & SERVICES DIRECTORY



Colour Consultancy
Interior Decoration
Luxury Lighting

Asha Ardill 0423 820 370 asha@southcoastcolour.com.au
www.southcoastcolour.com.au



GEOFF BEISLER Consulting Arborist
0410 946 561

admin@greeneearthtrees.com.au

Services include

- Tree Reports - Habitat Surveys
- Bush Regeneration - Nesting Box Installation
- All aspects of land management

KEITH'S MOBILE CAR WASH

I'll wash and wax while you relax! Give me a call and I'll come to you...
(Berry and surrounding areas) ...because details count!

Call: 0410 44 77 88



CAR WASH EXTERIOR, WINDOWS & WHEELS
Standard from \$60 | SUV from \$70 | 4WD from \$80
INTERIOR CLEAN FROM \$10
OTHER SERVICES UPON REQUEST

KEITH FAASSEN Email: keith.faassen8687@gmail.com ABN 87226451435

TRADES & SERVICES DIRECTORY

Canine Cardio

Dog Walking & Animal Home Care

Dog Walking | Pet Minding | Doggy Daycare | Overnight Stays

Annette Brooker

0418 427 438

info@caninecardio-homework.com.au
www.caninecardio-homework.com.au



Television Antennas SHOALHAVEN ANTENNAS

Servicing Berry and surrounding areas.

- Digital Upgrades
- New Installs
- TV Tuning
- Repair existing systems
- Add Phone/TV Outlets



Ph: 0410 526 672 Paul 0424 243 005
Fax: 02 4422 6672

WINDOW
& GUTTER
CLEANING
HOUSE
WASHING

FLASH



CALL JAMIE
FOR FREE
QUOTE

0413 582 948 **WINDOW
CLEANING**

PROMPT, RELIABLE SERVICE



HIGH QUALITY, THERMALLY EFFICIENT BESPOKE HOMES.

www.illawarraprecasthomes.com.au

Phone: 0409 622 175

Builders' Lic. 183068c

GETTIN' IT DONE! TREE SERVICES

TREE REMOVALS • TREE PRUNING
BLOCK CLEARING • WHOLESALE MULCH
STUMP GRINDING • CHERRY PICKER HIRE

JASON 0432 281 063
WWW.GIDTREESERVICES.COM.AU



~ Specialising in gentle,
low force techniques ~

SAFE, EFFECTIVE TREATMENT FOR:

- All ages; from babies through to the elderly.
- Headaches/migraines
- Back/neck pain
- Postural problems
- Whiplash
- Scoliosis
- EFTPOS available
- HICAPS now available

57 Queen Street • Phone: 4464 3414

TANNED HIDES, BERRY NSW

TANNED HIDES

Professionally Tanned Hides available
- your hide or choose from our range

PHONE 0409 444 081

All enquiries welcome
www.tannedhides.com.au
e: sales@tannedhides.com.au

Ian's Interior Linings



★ All plasterboard &
fibrous plastering

★ Commercial & Domestic

M: 0418 220 751

E: willey63@bigpond.com.au

AIS CERTIFIERS

FAST TRACK
BUILDING APPROVALS

SWIMMING POOL
COMPLIANCE CERTIFICATES

TONY LEWIS

0417 372 728 • 4421 0004

info@accreditedinspectionsservices.com.au

THE BOUTIQUE GYM

Personal Trainer Jen Miller

117 North Street,
Berry NSW 2535

☎ 0413 648 943

jenmiller65@hotmail.com



LOCAL • COUNTRY • INTERSTATE

Experience a New Level of Professionalism

Phone 04 2864 3557 or 4464 3557

Four Legged Friends PET FEEDING SERVICE

For Horses, Dogs, Cats, Birds
& all other domestic pets

Megan White
dip in animal care

0407 407 328

whitewolf99@bigpond.com

Established: 1995

• FEEDING • EXERCISING • RUGGING

• GARDEN • MAIL • GARBAGE

www.fourleggedfriends.com.au



All Creatures
Mobile Vet

- Convenient pet health checks and vaccinations
- Compassionate euthanasia at home
- Complete range of Veterinary services
- Pick up and drop off service when your pet needs to visit our hospital
- No call out fee
- Emergency service available
- Service area from Albion Park to Milton NSW

Personalised Veterinary care at home

(02) 4464 1899 www.allcreaturesmobilevet.com.au

Roof & Building Repairs

Roof Leaks

Leak Detection

Moisture Problems

0415 997 977

Info@benchmarkbuild.com.au

gerringong physiotherapy
nowra central physiotherapy
shell cove physiotherapy
kiama physiotherapy

4234 4666

www.gerringongphysio.com

TRADES & SERVICES DIRECTORY

Vaughn's Lawn & Garden Service



- Local knowledge
- Professional service
- Fully insured

0408 863 776

www.vaughnsgardening.com.au

G.M. Ellison & Co. lawyers • conveyancers

Graham Ellison LL.B.

- Real Estate & Business Conveyancing
- Wills, Probate and Personal Arrangements

5 HOST PLACE BERRY
Ph: 4464 3814 / 0408 444 808
graham@gmellisonlawyers.com.au

TERMITES!

- ▼ Pre purchase termite inspections and reports
- ▼ Termite barriers new & existing buildings, council approved
- ▼ Thermal imaging and microwave inspection tools
- ▼ Termite Baiting Systems

FREE QUOTES Call
TERMITE SOLUTIONS-
4448 5444
termite experts

Fully Licensed, Accredited & Insured
Family Business with over 20 years experience

PROPERTY MAINTENANCE HOME HANDYMAN

- Repairs and installation of doors/windows/gates and fencing
- Small extensions - decks/pergolas
- Tipper Hire
- Clean ups - rubbish removal
- 40 years' experience
- Fully licensed

Michael Barrett 0408 217 637

BERRY MAINTENANCE PLUMBING

ALL PLUMBING SERVICES
Gutters Hot Water Toilet Repairs Leaks

Paul Bramley Licence L5826
Mobile: **0438 641 046**
Office: 02 4464 1312

MY CERTIFIER

BUILDING CERTIFICATION

Construction Certificates, Complying Development Certificates, PCA Services, Pool Compliance, Basix Certificates, DA Assistance & Building Consultation

Che Leonard BPB1812
0417 593 496
Email: che@mycertifier.com.au
www.mycertifier.com.au

ease

Acupuncture + Chinese medicine

Digestive health
Women's health
Injury + Pain
Stress + Anxiety

57 Queen St, Berry | 0487 858 394
www.ease-acupuncture.com

HERE IS HOW TO GET THE BEST KITCHEN, VANITY, FURNITURE, TIMBER WINDOWS, DOORS, FLYSCREENS AND JOINERY

Rybrook Joinery

CALL SCOTT OR MICHAEL

4422 4600

MICHAEL HILL PAINTER & DECORATOR

Quality Work Guaranteed

Domestic Commercial Industrial

ABN 95 969 204 488 Lic No 121389C

0402474569

- Specialising In
- New/Old work
 - Feature Walls
 - Roofs
 - Texture Coating
 - Heritage

Arborist
Complete Tree Removal & Care
Reliable Professional Service
Mulch Sales
Stump Grinding
Fully Insured

Dave Kelly
0423 903 946

All aspects of professional tree care.



- Domestic and Commercial Cleaning
- Regular and Spring Cleaning
- Presentation Cleaning
- Rental Exit Cleaning
- Window Cleaning

Call Rhona for a free quote: **0417 652 892**

Over 20 years' Experience ...

ELECTRICAL CONTRACTOR

EEPS
Lic. No. 133674C

DOMESTIC & COMMERCIAL

Solar Power Installation
Home Automation Systems
Security Lighting
Pools & Spas
Hot Water Systems
Oven & Stove Repairs
Safety Switches
Smoke Detectors

Contact peter today!

0412 594 907 | 4464 1993

ENDEAVOUR ENERGY AUTHORISED LEVEL 2 SERVICE PROVIDER



HANDYMAN SOUTH COAST

TRADE QUALIFIED

Carpentry, plastering, painting, pressure cleaning, all repairs & renovations.

PROPERTY MAINTENANCE SPECIALIST

Fast, fixed, fabulous!

DANNY FAGAN 0407 118 311

Gerrong Painting Service

Lic: 186465C

- New & Repaints
- Interior & Exterior
- Small Jobs Welcome
- 30 Years Trades Experience



GREG DENT 0438 637 141



MISS SPARKLES SHOALHAVEN

External House Cleaning

HOUSES FROM \$148

- ★ Environmentally Friendly
- ★ House/Driveway Packages
- ★ Removal of Cobwebs
- ★ Patios and Driveways
- ★ Mildew Treatment
- ★ Windows/Screens included
- ★ Commercial work
- ★ Seniors Discount

Phone Dennis for a free quote:
0407 642 256

Now Offering: Internal Window Cleaning & Licensed/Insured Electrical Work (Lic No. 209514C)

TRADES & SERVICES DIRECTORY

CKB CIVIL

All Earthworks
Landscaping
Driveways
Rural Roads



Charlie 0418 429 740
charlie@ckbcivil.com.au

Lic 244729c

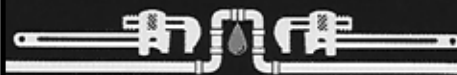
CANOPY CLIMB

CLIMBING
ENTHUSIAST

CANOPY CLIMB ARBORIST

» All aspects of tree work » 20 years' Experience » Fully Insured

0400 777 605
canopyclimbing@gmail.com



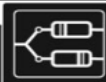
SCHOON PLUMBING

Plumbing-Drainage-Gasfitting
Roofing-Guttering
schoonplumbing@hotmail.com

Mini Excavator Hire
New Homes-Renovations
Tindalis Lane Broughton NSW 2535

Call Today!

0419624011



Computer Troubleshooters

TECHNOLOGY SOLVED

- Residential or Business we come to you.
- Hardware and software repairs and sales.
- Networking solutions.
- Over 20 years' experience.

0422 227 456
www.ctsnowra.com.au

LOCAL SERVICE - GLOBAL STRENGTH

Glynn's Carpentry

YOUR HOME IS IN GOOD HANDS

Maintenance, Repair & Renovation Specialist

"I can help with those odd little jobs that never seem to get fixed or a bigger project like a new kitchen or bathroom"

Lic # 218008C

For a friendly free quote - Glynn 0423 384 072



ROB PACKER POND & DAM CARE

- Algae & weed control
- Pumps & filtration
- Fish & plants
- Maintenance & repairs

0409 550 741

Curran Plumbing

PLUMBING AND PIPE RELINING

Local Plumber
Fast & Reliable 24/7

1300 792 082

www.curranplumbing.com.au

10%
OFF
IF YOU
MENTION
THIS AD



Southern Tree Service

- Qualified Arborist
- Qualified Horticulturist
- Tree care and maintenance
- Expert trimming and tree removal in confined areas
- Chipper • Mulch
- Advice on replacements
- Stump Grinding
- Fully Insured

Paul Gillen

Ph/Fax 4464 2822 • Mobile 0407 405 968

JASON COX

LICENSED REAL ESTATE AGENT

0429 949 900
jason.cox@oneagency.com.au
Shop 6, 90-92 Queen Street
Berry NSW 2535
02 4407 5000
Shop 2, 160 Moss Vale Road
Kangaroo Valley NSW 2577
02 4465 1996
www.oneagency.com.au

ONE AGENCY
COUNTRY LIVING

WALLED GARDENS

Kangaroo Valley Berry Bowral Wildes Meadow

garden maintenance
garden design
installation

Joshua Wall
02 8999 1408
04 2357 8716

hello@walledgardens.com.au

www.walledgardens.com.au



Dwell SOUTH COAST

decorate • colour • style

Mindful **colour** specifications for inside + out

Home styling + **decorating** advice

Selection of **fixtures, fittings + finishes**

Sourcing furniture + artwork

Chat to Tonya 0447 186 105

www.dwellsouthcoast.com.au



Rural bitumen services pty ltd

Specializing in Private Road Construction
& Bitumen Seal

- Driveways
- Carparks
- Decorative driveways
- Fully Insured

Contact Office (02) 4464 1555

James 0416 269 744

MANN MADE BUILDING & CONSTRUCTION

CHRIS MANN 0431 671 475
mmbuildingandconstruction@gmail.com

NEW HOMES | RENOVATIONS | EXTENSIONS | DECKS-PERGOLAS | CONCRETING

ABN 40 624 149 506 LIC. NO. 292587C

Barrys Mowing & Maintenance Service



RESIDENTIAL & SMALL ACRES | BERRY & SURROUNDS

Fully Insured | Call for a Free Quote

0409 929 534

South Coast Gutter Wiz

GUTTERS BLOCKED?

Our safe, affordable & mess-free vacuum gutter cleaning service is now available in your area! Keep your home free from debris & bushfire safe. Pressure Cleaning service also available.

Call for a free quote today....

Your vacuum gutter cleaning expert

Phone Garry 0401 492 220



ESTABLISHED 1863

BERRY HOTEL

Gear up for the CUP

MELBOURNE CUP CALCUTTA

SUNDAY 4th November from 5.00pm

Last year's PRIZE POOL - over \$10,000

TICKETS ON SALE NOW IN THE FRONT BAR!

dinner specials also available on the night



TAP TAKEOVER
STONE WOOD
STONE WOOD AUSTRALIA

Australia's No 1
Craft Brewery
Great BEERS &
giveaways all weekend
Drop in and try a selection!

OCTOBER LONG WEEKEND



GRAND FINAL

Sunday 30th September
Watch the BIGGEST
game of the year
at the Bottom Pub!

Dinner Specials
Prizes and Giveaways

*oh, and don't forget
the great atmosphere!*

LIVE MUSIC LINEUP

WOODY

Saturday
13th
October

every FRIDAY night tickets ON SALE 5.30pm - 7.30pm

CASH JACKPOT RAFFLE



Jackpots
\$200
every week!

\$3,800!!!
at time of print

Supporting
Berry Shoalhaven Heads Cricket and
Senior Rugby League Clubs
LTPM/18/09/18

Thursday is FAMILY night
at The Berry Hotel:

- ** Ribs & Rumps
- ** Kids eat free (conditions apply)

starts
October
18th



FREE
ENTRY

**SINGO
BINGO**

WEEKLY
THURSDAY
NIGHTS
6:30pm

"WHERE MEETS BINGO"

IT'S FUN & IT'S HERE!
No SING ... it's just a play on words!
PRIZES - GIVEAWAYS - CASH JACKPOT

120 Queen Street, BERRY www.berryhotel.com.au
p. 02 4464 2294 f. 02 4464 2142 e. info@berryhotel.com.au



facebook.com/TheBerryHotel



[@theberryhotel](https://twitter.com/theberryhotel)



Smartphone App

TAB

Restaurants . Functions . Accommodation . Live Music

RESPONSIBLE SERVICE OF ALCOHOL AND GAMBLING

OFF-STREET PARKING FOR PATRONS AT THE REAR OF THE HOTEL

