

Keeping Berry Informed



BERRY TOWN CRIER

PO BOX 202 BERRY NSW 2535

WWW.BERRYALLIANCE.ORG.AU

 FIND US ON FACEBOOK

AUGUST 2018 PRICE: \$3.00

Page 5

**ADFAS ARE
HOLDING
2 SPECIAL
INTEREST DAYS
IN AUGUST
- COME AND
CHECK THEM
OUT!**

Page 11

**THE GARDEN CLUB'S
CAMELLIA & FLORAL
SHOW IS HAPPENING
THIS MONTH;
FIND OUT
MORE INSIDE**

Page 23

**HELP SAVE THE
STATION MASTER'S
RESIDENCE**

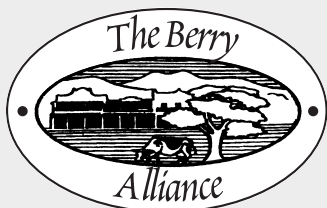
Page 3

**FIND OUT ABOUT HOW
YOU CAN VOLUNTEER
AT ONE OF BERRY'S
AMAZING COMMUNITY
GROUPS AT OUR
VOLUNTEER EXPO IN
SEPTEMBER**

Page 7

**JOIN THE SURF
LIFESAVERS' CLUB
AND TRAIN AS A
LIFE GUARD OR
JUNIOR NIPPER**

BERRY ALLIANCE INFORMATION



The Town Crier is produced
by the Berry Alliance, Inc.

The purpose of this publication is
to communicate to the people of
Berry about community activities
and to generate a small income
for the Berry Alliance to cover
administrative costs and donations.

MEMBERSHIP

Membership of the Berry Alliance
costs \$10 pa. It aims to share
information amongst community
groups and individuals, and to
ensure that Berry continues to be a
community we are proud of.

Membership is open to Berry
community groups and individuals.

To join the Berry Alliance,
write to

PO Box 202, Berry NSW 2535

ALL BERRY ALLIANCE ENQUIRIES

Secretary: 0449 569 059

Email: info@berryalliance.org.au

Post Office Box 202

Berry NSW 2535

Editor's Note



The closing date for our September
issue will be Wednesday 15 AUGUST
at 5pm. Please submit prior to this
date if it is your first submission.
Material can be submitted via e-mail
to: towncrier@berryalliance.org.au.
Phone 0428 037 572. Town Criers
can be downloaded for free from
www.berryalliance.org.au or our
Facebook Page: Berry Town Crier.

Nancy Davies - Berry Town Crier

TOWN CRIER EDITORIAL BOARD

Nancy Davies Rick Gainford
Holly Landgren Adrian Bishop

Contributors are those from the Berry community who
have news or views relating to residents of the area.
The opinions expressed in the Town Crier are not
necessarily those of the Berry Alliance or the Editor.
The Town Crier is published every month, with a
circulation of 2400.

PRINTED BY **Berry Printers**
CONCORDE WAY BOMADERRY PH: 4422 3774
PRINTED ON RECYCLED PAPER



Find us on:
facebook.

MEET ONE OF BERRY'S VOLUNTEERS

How long have you been volunteering with the men's shed? When we moved down from Sydney in 2007 we were introduced to a lot of people involved in a variety of community groups. The Shed was something I had not heard of at the time and the idea appealed to me as it would give me an opportunity to learn more skills. In 2008 I was asked to become involved.

Why did you decide to start volunteering with this group? Like so many different groups in Berry it was the opportunity to meet new people, we had already become involved with the Garden Club, ADFAS and Meals on Wheels. The Shed was a chance to get involved with another group of community minded people.

What are some of your duties? As Secretary you become involved in a wide sphere of jobs. Having spent over 40 years working for Shell I felt that I had a certain amount of skills in sales and marketing as well as administration experience that I could bring to the Shed.

Some of the duties I perform include preparing agendas for our monthly management meetings, taking minutes and then circulating those minutes. I handle and attend to incoming mail and spend some time in writing to people as well as sending out get well cards etc. Many people choose to ring the Shed after hours and I take those calls and try and assist the other person on the line. The AGM is the most important meeting of the year and this involves a considerable amount of work and outward correspondence to members as well as vetting nominations for the committee.

Over the years I have spoken at a number of other community groups such as Rotary, Probus, Masons, View Club etc about what the Shed does to assist the community. When ever there is a function I get involved from Anniversary celebrations to Christmas parties. The biggest function was to organize the opening of the new Shed in 2011 and this involved asking the Governor of NSW Marie Bashir to cut the ribbon as well as having Federal, Local and Council representatives attend. The function was attended by 250 people and was a very rewarding day. Our Annual garage sale in November is a very important event and this together with many other members, involves a considerable amount of time. We need to get the community coming to the Shed to buy our merchandise so we can continue our scholarship programme as well as provide funds for repairs and purchases of new machinery.

What are the benefits of the role? The major benefit for me is to be able to continue our Scholarship program to the four schools in Nowra. We are into our fourth year and the continuation of the programme is dependent on funds being provided by the Berry Uniting Church and through the sale and repair of items as well as proceeds from our annual Garage Sale in November. To be able to stand on the stage of a School and speak to over 1,000 students is very rewarding and to be able to say to these students that anyone of you could receive our Scholarship. A lot of time is also spent talking to members of the Shed who may raise issues of a personal nature or make suggestions on how we can best improve the way we manage our Shed.

One of the ways we can best get our message out to the community is to place an article in the Town Crier for all to read. It is amazing how much feedback we get from the monthly articles in the Crier

IS YOUR GROUP IN NEED OF SOME NEW VOLUNTEERS? As long-standing members retire from the Shed or others move out of Berry there is always an opportunity for new members to join our Shed. We currently have around 60 financial members on our books with up to 25 attending every Tuesday and Thursday. If any men would like to come in and visit us we would be only too happy to show them around and let them decide if the Shed is for them. Those with woodworking skills are particularly welcome as are others who may need training to improve their skills.



wholebody
PHYSIOTHERAPY
...dedicated to your wellbeing

Mary Pentecost

84 Queen Street Berry NSW 2535
email: wbpqueen84@hotmail.com

4464 2874

Volunteering – the heart of our town

At the Berry Alliance Community Group Leader's Get Together earlier this year we were struck by the common theme of "where do we get much needed new blood for our volunteer community groups?"

We decided that we would hold a Volunteers Expo in September this year.

The Alliance has written to all the appropriate Berry Community Groups (registered with the Town Crier) inviting them to come along on the day and present examples of what they do, perhaps a handout with details, a list of jobs that need new volunteers for and some people from the group to talk with the possible new volunteers. These groups also include sporting groups and all the volunteers that help run them.

This provides members of our community a chance to find out what these groups do and if they have a skill or the time to assist the group. There might even be some cakes and slices and other handmade goodies from some of our groups.

Put this in your diary as a must participate. More in the September issue of the Town Crier.

► **Sunday 15th September at the Berry Courthouse from 11am until 3pm**

Berry Volunteering Expo

In the interim we have been including in each Town Crier a monthly article highlighting one of our many volunteer groups and a volunteer with them. These have included: Rotary with Ken Hutt; Berry Public School Plant Propagation Nursery with Lyn Clarke; Berry Men's Shed with Richard Wiseman. These articles are headed with "Meet one of Berry's volunteers". We hope you have enjoyed these and they have inspired you.

Rick Gainford for the Berry Alliance Inc. and Berry Town Crier - 0449 569 059
info@berryalliance.org.au

News from the Berry Courthouse

The Conservation Committee of Management has been busy over the past few months with regular maintenance and some special, bigger jobs.



With the assistance of the gardening group from the Berry Garden Club the gardens have been maintained over the year, the lawns kept and edged, the hedges trimmed and repairs (always repairs to be done) done.

Recently we have:

Installed a new double gate at the driveway side of the private garden. This allows some vehicles such as portable pizza trucks and Bar vans access to the private garden for functions as well as for our usual access requirements;

installed some more metal edging to the lawn area in the private garden to match the edging we installed around the fountain and rose garden last year;

widened the gravel path under the blossom trees to encompass the blossom trees. This allowed us to remove the timber edging that was deteriorating and coming apart;

pruned the blossom trees to maintain their shape and appearance;

sanded back all the garden benches and re-oiled them (thank you, Geoff);

had lights and toilets repaired.

There is more work to be completed in the quiet season (winter) outside the "wedding season".

The new "Gladiator" chairs in the hall and for hire in the gardens are a great hit. They are attractive, light and very functional. Our hire charge of \$5 each is approximately half what

the hire companies charge and there is no delivery or collection charge. These 75 chairs fit really well inside the hall and allow more people to be seated at events inside and are also very comfortable. The hire charge helps us recoup the purchase cost.

The office at the eastern end of the building has been painted from ceiling to windows and walls and looks great. This also assists in protecting the fabric of the building.

Bookings for functions and events are going well and our policy of reducing the number of people allowed for bookings and reducing the finish time as well as ensuring dancing is only held inside the building has assisted us in reducing any noise and possible negative impact for our neighbours. We also have a security guard at functions with alcohol to ensure observance of the rules and noise limits. These variations to our hire conditions, along with previous policy changes has resulted in a very big reduction in noise issues as well as wear and tear issues on the gardens and building.

Rick Gainford

For the Berry Courthouse Conservation Committee

functions@berrycourthouse.org.au

www.berrycourthouse.org.au

berrycourthouse

Come and have a look at what we have achieved.

We are hosting a "VOLUNTEERS EXPO" for the Berry Alliance and Town Crier in September and it will be a good opportunity to see the upgrades as well as meeting some of the local Berry Community Groups and what they do with the possibility of joining and assisting them.



The Rose Tree GARDEN CENTRE

NOW OPEN RIGHT IN THE CENTRE OF BERRY!
102 QUEEN STREET, BEHIND THE NEWS AGENT

- QUALITY PLANTS AT REASONABLE PRICES
- LARGE VARIETY OF OUTDOOR PLANTS, INDOOR PLANTS
- POTS & GARDENING SUPPLIES

PROFESSIONAL ADVICE

EASY ACCESS

PARKING AT REAR

OPEN 6 DAYS 9AM – 4PM, CLOSED TUESDAYS **102 QUEEN STREET**



HEAD INJURIES & HELMETS

Join us for an afternoon conversation about head injuries and helmet safety.

The discussion will delve into Cooper's skateboard accident from a medical and personal perspective but also provide an insight into exactly what a brain injury is and the impact that it can have on a person and their loved ones.

Cooper Martin will present the talk about his skateboard accident in 2016 and helmet safety that he has been delivering at primary schools in the Shoalhaven region.

Sarah Adams, Clinical Nurse Consultant for Trauma at Sydney Children's Hospital, will share her extensive medical knowledge and insights into head injuries.

Ashley-Jade Lee, Emergency Department Nurse at Sydney Children's Hospital, will speak about her skateboard accident and head injury.

Kylie French, Brain Injury Coordinator and Pene Ingle, Clinical Nurse Consultant and Day Rehab Coordinator from Rehab2Kids at the Sydney Children's Hospital, will present information about the Brain Injury Rehabilitation Program.

Rachel Martin will share a parent's perspective into Cooper's accident.

DATE: SATURDAY 11 AUGUST 2018

TIME: 2PM to 4PM

VENUE: BERRY PUBLIC SCHOOL HALL

RSVP: WEDNESDAY 8 AUGUST 2018 to Rachel 0413 037 979

*Optional gold coin donation with all proceeds donated to Ronald MacDonald House Randwick. This event is for adults and teenagers. Parental discretion is advised for children attending who are younger than 13 years of age as the talk will involve photos and content that may be confronting.

PROUDLY SPONSORED BY THE BERRY ALLIANCE

Changes Proposed for Huntingdale Park Development

The application has now been lodged. A special Forum meeting will be arranged for the developer to explain the proposal so that the community can make an informed assessment. We will advise the date of the meeting when we have it.

New Footpath Secured for Alexandra Street

We have arranged the construction of a footpath along the western side of Alexandra Street (between North St and Albert Street) and the installation of kerb ramps at either end. We obtained a quote from a local contractor and the BCAC and Council have agreed to provide funding. When Berry District Park is completed, Alexandra Street will become a main pedestrian thoroughfare.

Kerb Extension Planned for Corner of Alexandra/Albert Streets

We are pleased to report that Council has allocated funding to construct a kerb extension on the south-east corner of the intersection of Albert and Alexandra Streets. It will mirror the kerb extension on the opposite south-west corner of the intersection and will improve pedestrian accessibility and safety.

Station Masters Residence

The Berry community overwhelmingly supported the Conservation Committee's Petition to help save the SMR from demolition with 3,665 signatures and letters from community groups. Local member Gareth Ward will personally hand the petition to the Minister for Transport & Infrastructure. There are viable options for the use of the Residence by RailCorp, as well as offers to buy and restore the property.

The Berry Forum

www.berryforum.org.au

Albion Park Rail Bypass Project

The contract to design and build the bypass has been awarded to Fulton Hogan. Motorists using the bypass will be able to avoid up to 16 intersections and the only sets of traffic lights between Bomaderry and Heathcote.

Electric Vehicle Charging Network

The NRMA remain interested in locating one of their EV Charging Stations in Berry in an appropriate site. They are evaluating options and seeking Council support to organise community consultation.

Bangalee Motel DA

Council is conducting its assessment of the development application and we will inform the community when the date for its review by the Development Committee is announced.

Road Closure between Coolangatta Road and Gerroa Road

The road closure is in place until late-July to allow culvert replacement works. Works will then be completed on the widening and pavement aspects of the project.

National Tree Day - Sunday 26 August

Berry Landcare will be working with National Parks to plant trees in a section of Seven Mile Beach National Park on the edge of Coomonderry Swamp adjacent to Campbells Run from 10 am to 1 pm, followed by a barbeque. Please email berrylandcare@gmail.com for more information.

Next Forum Meeting is 16 August 7.30pm at the School of Arts

TO RECEIVE OUR REGULAR NEWS UPDATES THAT GO TO OVER 1000 RESIDENTS, JUST EMAIL berryforum@hotmail.com WITH YOUR EMAIL ADDRESS.

THE BERRY PHARMACY

is proud to offer the services of



TRISH MILLS RN SPECIALIST CONTINENCE NURSE CONSULTATION SERVICE



'Like'
us on
Facebook

During a consultation Trish will assess and explain your condition and provide recommendations and treatment solutions.

Trish is supported by trained staff at the Berry Pharmacy who can provide ongoing assistance.

Trish is also qualified to assess your eligibility for Government funding of up to \$580 per annum for continence products.

For further information we encourage you to talk to our staff in-store.

This month has been good for a number of reasons. Firstly, our No Straw campaign has had a bit of a win. Brett of The Great Southern Hotel agreed to remove plastic straws from the bar and has made a commitment to move towards paper straws for those who request one.

Giving out plastic straws on request will go a long way towards reducing the number escaping into the environment. A big thank you from Boomerang Bags.

The second heart-warming moment was a phone call from Lois Saunders who is one of our home sewers. She rang to say she had made Boomerang Bags and they were ready for me to pick up. Lois enjoys sewing and, in her words: doing something for Berry. It is wonderful to have so many ladies in the group who contribute to our community in a such meaningful way. Thank you, Lois, and happy 90th for September. The supermarket is now single-use plastic bag free and it is a joy to see customers arriving with their own shopping bags. Borrow & Bring Back bags are no longer available in the IGA; however, it is possible to pick one up from the chemist when you are shopping for pharmacy items. Bought to Support bags are also on offer for a donation in businesses around town.

We have just had Plastic Free July and if that left you wondering what to put your household rubbish in at home here's a tip, save paper bags like the ones from the butcher to wrap up your rubbish. If you buy bread in plastic bags you can reuse them for rubbish, too. However, avoiding and reducing plastic packaging is always the preferred option, is it not?

Our project, making Boomerang Bags for the Salt Ministries in Bomaderry is well underway.

The new label allows for the church to write their name on the bag in the hope that it will be returned to be filled with necessities and borrowed again.

If you would like to help us or learn more about Boomerang Bags, please call in to our monthly meeting for a chat.

The Great Southern Hotel will phase out plastic straws which is great news.



Shoalhaven SOUTH COAST, NSW

ADFAS AUSTRALIAN DECORATIVE & FINE ARTS SOCIETIES



ADFAS Shoalhaven welcomes both members and visitors to a series of lectures by John Ericson.

Thursday 30 August 7.30 pm – 9.30 pm

Children's Book Illustration

Included with membership or visitors welcome, \$25.00 at the door, includes a light supper with wine. Friday 31 August 10.00 am – 3.00 pm

Reading Pictures, Are You Visually Literate?

Norman Rockwell: Great Artist or Mere Illustrator?

Illusions in Art and Illusions as Art

Pre-payment required: \$60.00 for members, \$70.00 for visitors, includes morning tea and lunch. Payment can be made by cash or cheque at the 2 August lecture or by direct deposit to ADFAS Shoalhaven, BSB: 082-435, Account No: 50503 5938. Please include full name as reference and send a quick email to Julie, the Membership Secretary, at info@farmeadowlodge.com.au. Both events are at the Berry School of Arts, Alexandra St, Berry.

John Ericson is a former university lecturer who has developed a particular interest in presentation skills including the role of pictures in learning and the appropriate use of PowerPoint. His talks are well-illustrated and presented with warmth and humour.

Children's Book Illustration will examine how illustrations contribute to the development of understanding and how the interaction of image and narrative create powerful memories. Many of the images we saw as children remain with us throughout our lives. Images of 'Tigger' and 'Toad' and 'The Tiger Who Came To Tea' will probably stay with us forever!

In **Reading Pictures: Are You Visually Literate?** John will explain how we can improve our perception and appreciation of what we choose to look at. Is what we see what others see? Is what we see the way it is?

Then, find out about the storyteller with a brush, **Norman Rockwell**, the painter and illustrator whose work has probably been seen by a larger audience than any other artist in history! Very popular in America, Rockwell is most famous for the cover illustrations he created for the Saturday Evening Post. Today his work sells for millions and tells amazing and whimsical stories.

Lastly, in **Illusions in Art and Illusions as Art** John will explore how art is illusionistic by nature. M C Escher, Dali and Duchamp were old champs at the art of visual manipulation, but modern-day artists are digitally and traditionally creating cognitive illusions that force a double take.

Join us for these entertaining and highly informative lectures.

Information on the Society and the 2018 program can be found at: <https://www.adfas.org.au/shoalhaven/> or from Julie, the Membership Secretary, on 0429 549 942.



High Tea at St Luke's Berry

2:00 pm Saturday 1st September 2018

At St Luke's Hall

68a Princess Street, Berry. Parking: access via Victoria St.

Guest Speaker returning by popular demand.

Colleen Hirst, Psychologist and Family Therapist.

God and Relationships. What to do when things get messy!

Bookings open 29th July

\$15 pay at the door for this popular ladies-own event.

Register with Gail Paton 4448 7915 or 0413 893 508
email: gailpaton@bigpond.com

"Berry Textile Art Exhibition"

Berry Textile Art Exhibition

Berry School of Arts

18 August 9.30 - 5pm

19 August 9.30 - 4pm

All proceeds of the Exhibition to
Children's Medical Research Institute – Gerringong Committee

Berry Textile Art Exhibition will feature many interesting exhibitions within. UK Textile Artist Anne Kelly has sent over her "Travel Tags – Moving Memories Project". Anne Kelly has curated this exhibition from artists around the world. Some of Anne's pieces will be on show along with works from a group of her Australian students from Anne's teaching visit in 2017.

The Exhibition will also include works by the Tutors at this year's Berry Quilting Retreat: Susan Smith, Jessica Wheelahan, Shuji & Alison Yamazaki from Wabi-Sabi Designs Australia, Susan de Vanny and Dijanne Cevaal who will be bringing her "Travellers' Blankets" and the "Aussie Bush Project". Jessica Wheelahan's work has recently graced a catwalk in Paris in collaboration with @romancewasborn and Australian icon Jenny Kee @ jennykeez.

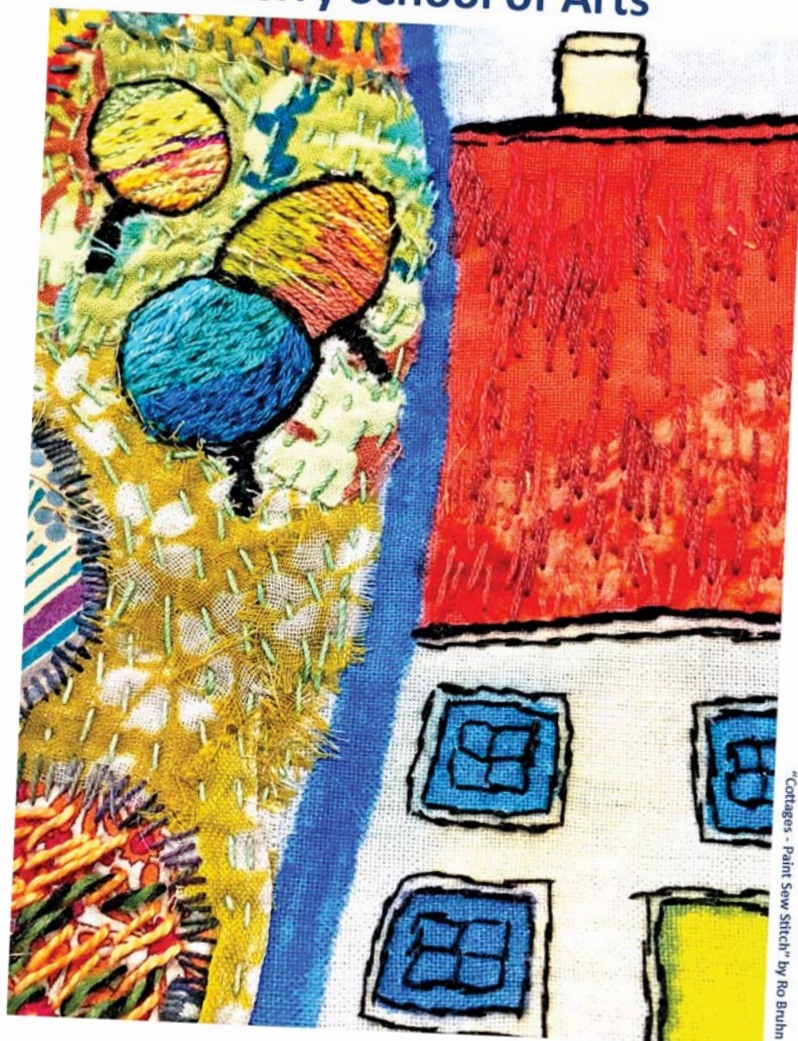
The One Red Thread Textile Art Prize will be a feature as well as the Coastal Threads Exhibition & Dessert Threads Exhibition curated by Caroline Sharkey. Within the Exhibition Hall there will be traders to tempt you: Wabi-Sabi Designs, Reece Scannell Fabrics, Fabric Garden, Patchwork Plus, Nowra Sewing Essentials, Material Girls Downunder, Lissa de Sailles Beyond Basketry and Jennifer Wulff with her new book 'Towns and Trailblazers' (the quilt will also be on show).

To continue the WAR on WASTE – I will be hanging my "Waisted – Deconstructed/Reconstructed" Denim quilt made from jeans that would have ended up in landfill. Please join in, bring your friends and support this worthy cause.

There are still places available with Jessica Wheelahan & Susan Smith – go onto my web site for details & registration. For more information go to www.berryquiltingretreat.com.au email: Elizabeth@berryquiltingretreat.com.au

BERRY TEXTILE ART EXHIBITION

Berry School of Arts



"Cottages - Paint Sew Stitch" by Ro Brin

18 August - 9.30am to 5pm

19 August - 9.30am to 4pm

www.berryquiltingretreat.com.au

Proceeds to Children's Medical Research Institute - Gerringong Committee



The surf life saving season on Seven Mile Beach for summer 18/19 restarts on 30th September 2018 so please make this year the one you do something and "raise your hand high" for your community Life Saving Club and join us to train as a qualified Lifeguard or as a Junior Nipper. Shoalhaven Heads beach is the closest patrolled beach to Berry. Last year, Shoalhaven Heads Surf Life Saving Club celebrated 50 years of voluntary lifeguard services under the red and yellow flags of Surf Life Saving Australia and this year the NSW government has funded a \$110,000 grant for essential enhancements to the club facilities. Over the years more than 500 residents from the Northern Shoalhaven area, including Berry and beyond have given their time to public safety in the ocean at our beach or have learnt surf rescue skills as a Junior Nipper and we always need new members to join us. In return, through our accredited training, volunteers gain skills that are valued and can be applied in other parts of their lives - first aid and advanced resuscitation and spinal care, rescue skills and IRB driving, workplace OH&S as well as interpersonal skills of communication, reporting, trust and leadership.

If you are 16+, are willing to train for the Bronze Medallion or may already have current BM, or even a BM that needs to be updated, we would like to hear from you.

If you are aged 14-16+ you can join our group of cadets working towards the Surf Rescue Certificate (SRC). They also assist on our regular patrols lead by Bronze Medallion members. Nipper parents can also undertake the Surf Rescue Certificate to assist with general water safety plus be part of our regular patrols.

Many of our members start off by joining up the kids as Nippers and then go on to become trained patrol members. It is one of the few activities where parents can join as a patrol member at the same time as

Kids aged 5-13 can join our Nippers activities on Sunday mornings to learn about beach and ocean safety under the guidance of our Nippers Junior Activities Team

Come along to our CLUB OPEN morning on September 16th at 9.30 am for demonstrations and Life Guard training from our current patrol members and committee about what Surf Lifesaving is all about at our family friendly club on Macintosh St, Shoalhaven Heads. There will also be registrations for new and old members, a 2km community fun run and a sausage sizzle.



This season we are also partnering with Take 3 for the Sea environmental project so join us and help keep Seven Mile Beach safe and clean.

All Enquiries: General Club info:
www.headssurf.com.au and
Facebook Shoalhaven Heads Surf Life Saving Club or contact our Registrar and Publicity Officer on 0432 331 915 or info@headssurf.com.au

Knitting News



Winter is a good time to resurrect your needles and join the Knit with Love group at St Luke's Hall on a Friday from 1 to 3pm. All welcome for a knit/crochet and a chat. One of our projects has culminated in two big bags of knitting being delivered to the Saltbox ministry in Bomaderry/Nowra as a resource for their services.

Saltbox is heading up "Safe Shelters Shoalhaven" which is a combined churches and community project aimed at providing safe emergency overnight shelter for the homeless. They also run an MRV (Mobile Response Vehicle) which goes out on the streets every week to help people at risk. It gives us joy to know that we are providing warm clothing for people in need on these cold winter evenings. Meg Dover from Saltbox has accepted an invitation to speak at our meeting on 10th August.

All our work is new and handmade. It ranges from garments to beanies, to scarves and bed socks. Another project has been making beanies for people sleeping rough in central Sydney, so in May we delivered 80 beanies to Dorcas ministries for distribution. Our meetings average over 20 in attendance, gathering on a weekly basis.

Contact persons: Lyn (0404 562 772) and Niesje (0431 895 402)



Garments ready for Saltbox



**Berry
Community
Church**

Lighting up lives and communities with Jesus

**We meet at Graham Park
8 Schofields Lane Berry**

Sunday Services 9am, 10am & 5pm

Activities include mainly music, Boys & Girls groups,
Berry Youth & Connect groups.

We'd love to see you here.

info@berrycommunitychurch.org 4464 2315

www.berrycommunitychurch.org



**Chimney Sweep
Wood Fire Installation
and Maintenance**

Servicing Berry for over 25 years
Locally Run Family Business
Specialising in all your Wood Fire Needs
Licenced, Insured, Professional & Clean.

Contact Russell:

0412 241 557 / 4464 1557

Or Luke: 0413 737 316

Lic No L7020

Noah's Berry Cup Charity Race Day



Saturday 8 September 2018

~ Kembla Grange Racecourse ~

VIP - TICKET

\$110 per person

Ticket includes

- Coach Transport
- Entry into Race Course
- Race Book
- Buffet Luncheon in the Bert Lillye Lounge
- Three drink vouchers
- Afternoon Tea

Coach Transport - Departures

Shoalhaven Council—Bridge Rd	10.00am
Bomaderry Motor Inn	10.05am
Shoalhaven Heads Bowling Club	10.00am
Berry Showground	10.15am
Gerringong Hotel	10.30am
Kiama/Bombo Cemetery	10.40am

Features of the day include



THE NOAH'S ARK BERRY CUP

Sponsored by: **SLINGSBY HOLDINGS**



KEVIN ROBINSON MEMORIAL CUP

Sponsored by: **ILLAWARRA TURF CLUB**



JIM MCGEE MEMORIAL CUP

Sponsored by: **REGAL LODGE STABLES**

Enquiries / Bookings Contact

Mary on 0415 509321

or

**visit Hedgehogs Coffee Shop
in Berry**

~ Supporting Noah's Inclusion Services ~

A community where every child is given every opportunity to grow and thrive.

Every child. Every opportunity

www.noahs.org.au



Berry Community Church

Building loving relationships

Berry Community Church is invested in our community to help to build connected, meaningful and valued relationships, marriages and families.

We all need to feel like we belong, that our lives matter, and the people around us value who we are, and how together, we all contribute to building a better community. Strong, healthy relationships are the bedrock of our community and it is our heartfelt desire that everyone can experience unconditional love, acceptance and understanding.

Love and relationships are the most talked about, yet misunderstood topics in our world. They are not as easy as Hollywood would like us to believe, they are often hard work. In 1 Corinthians 13, the Apostle Paul gives a beautiful description of love. "Love is patient and kind; it is not jealous or conceited or proud; love is not ill-mannered or selfish or irritable; love does not keep a record of wrongs; love is not happy with evil but is happy with the truth. Love never gives up; and its faith, hope, and patience never fail."

Giving and receiving love in a healthy relationship can sometimes be challenging for many people, even those who have been together for a long time. Learning the keys to a healthy life-long relationship can unlock new levels of connectedness and loving with the most important people we share our lives with.

Two Session Relationship course with Kim Taylor Psychotherapist

Relationship counsellor and therapist, Kim Taylor, will be facilitating a two-session relationship course at Berry Community Church in September 2018. Kim has over 30 years' experience, currently providing relationship counsel and therapy from her practice 'Spirited life' in Berry. Kim will captivate you, as she walks through the big issues that impact how we do marriages and relationships. Topics include communication styles, attachment patterns, intimacy and commitment. With a combination of insightful teaching, the science of emotion and attachment, instructive role-play, and applied examples, this is an event not to be missed.

We invite you to come and join us for two fantastic and informative sessions at Berry Community Church (8 Schofields lane Berry) - Thursdays 6th and 13th of September 7.00-9.30pm. Cost is \$30 per couple or \$15 per single per session. Tea & coffee and supper provided. To book, or for further information, contact Gordon on 0431 032 332 or Gordon@berrycommunitychurch.org. For more information go to our website berrycommunitychurch.org. Registrations close August 31st.

www.berrycommunitychurch.org



Our special guest speaker on 22nd August, at 10am is Kim Mukuka. Kim is a teacher and founding member of Zambia's Child. She is visiting from the Copperbelt region of Zambia where she is involved in a project aimed at enabling children living in poverty, to attend school. In this area of Zambia, over half the population are illiterate and live below the poverty line. The charity, Zambia's Child aims to promote long term self-sufficiency within the community. Kim will take us on the journey that led her to this project.

PLEASE COME ALONG FOR A GREAT MORNING. EVERYONE IS WELCOME!

The venue is Wesley Hall at the Uniting Church, 77 Albert Street.

BERRY COMMUNITY LIBRARY

Our first School Holiday Storytime was a great success! We had lots of children and parents who listened to stories then took part in different craft activities. After a busy morning there was plenty of time to borrow books for holiday reading. We plan to repeat these Storytimes in the future. Many thanks to all who came along to join in the fun.

The "Third Wednesday Book Group" will meet in the Community Library on the 15th August from 4 - 5.30pm. We have started to think about particular questions to focus our reading and we enjoy drinks and nibbles along the way. Everyone is welcome.

To keep up with all the new things that are happening, why not "like" us on Facebook. Just type in "Berry Community Library" and like our page.

» LIBRARY OPENING HOURS

Monday and Wednesday 1-4pm

Tuesday Thursday and Friday 10-1pm

77 ALBERT STREET, OPPOSITE THE IGA CARPARK, BEHIND THE UNITING CHURCH.

FOR MORE INFORMATION CONTACT

JANET ON 0425 220 258

bombo

blinds | curtains | shutters | awnings



4237 8280 www.bombo.com.au

Visit our beautiful showroom at **7 Johnson Street, Kiama Downs** (near the IGA)

WE CARRY THE FABULOUS "BLINDS BY PETER MEYER" RANGE • ALL PRODUCTS COMPLY TO CORD SAFETY LAWS



Berry Vet Clinic

PET DENTAL MONTH

August is Pet Dental Month and we are pleased to focus on such an important aspect of pet health with an aim to improve all aspects of oral well being. Four out of five dogs and cats over the age of three years have some sort of dental disease which may go unnoticed by their owners.

More importantly, if left untreated, it can lead to other serious health problems such as irreversible damage to the tooth and surrounding bone, abscesses of the tooth root and even infections in vital organs.

Pets often don't show pain. Even pets with sore gums, infected mouths and broken teeth will continue to eat so owners may not see any problems.

Humans are urged to regularly visit the Dentist for check-ups and preventive care. Your Pet needs the same care.

So, how can you tell if your pet is in the early stages of dental disease?

- **Your pet's breath should not smell bad. Bad breath is a sign of infection.**
- **Gums may be red and inflamed.**
- **Teeth stained with tartar.**
- **In more serious cases, they may be dropping food and drooling.**

It's in the best interests of your pet to have an examination of the oral cavity and treatment for dental disease while they are unconscious.

Most dental disease occurs under the gum and cannot be identified while the animal is awake. Performing dentistry on animals while they are awake is painful, stressful and considered to be cruel.

At home, we recommend regular tooth brushing and many cats and dogs can be trained to enjoy having their teeth brushed, especially if you start at an early age.

Colouring Competition

To celebrate Pet Dental Month, Berry Vet Clinic is running a colouring-in competition for young pet owners. We will take entries from 1 August to 31 August 2018. Simply download the picture www.berryvet.com.au/colouringcomp

or pick up at the Berry Vet Clinic and show us your best colouring of the dog teeth picture (before and after brushing and seeing the Vet). We will award one prize pack for 5-8 year olds and one for 9-12 year olds. The prize includes a yummy bag of Hills T/D Dental Food for your pet cat or dog (2.26-3kg), Petosan pet toothpaste and brush kit and some fun cat or dog toys. Valued at \$110 each pack.



Contact us (02) 4464 1899 to make a dental appointment at one of our clinics today.

Berry Vet Clinic

84 Queen Street
Berry NSW 2535

**Open: Mon-Friday 8am-6pm,
Sat 9am-12**

All Creatures Shoalhaven Heads

5/121 Shoalhaven Heads Road
Shoalhaven Heads NSW 2535

**Open: Mon-Fri 8am-5:30pm,
Sun 10am-12**

Kangaroo Valley Consulting Room

162 Moss Vale Road
Kangaroo Valley NSW 2577

Open: Tue-Thu 2-4pm

Ph: (02) 4464 1899 Email: info@berryvet.com.au Web: www.berryvet.com.au
House calls at no charge and 24 Hour emergency service available

Berry & District Garden Club News



SECRETARY MARY SEELIS 4464 1191 VISIT US ON www.berrygardens.org.au

The 56th Berry Camellia & Floral Show is upon us. Advertising is prominent around town and information is readily available on our website. A visit to the School of Arts on the weekend of the 4-5 August will allow you to appreciate the beauty and variety of the wonderful Camellia genus. A hall filled with spectacular blooms provides an unmissable opportunity to select your favourite. It seems that there is at least one camellia bush in every Berry garden. Why not choose your best blooms and enjoy the fun of exhibiting them? Entries are accepted from 7.00am - 9.30am on Saturday 4th with help provided to novices. We also encourage entries in the Floral Section of the Show. Study the schedule on our website and help us fill the shelves with scent and colour.

Magnolias blend beautifully with Camellias and Azaleas in our Berry gardens. A stroll up King Street will allow you to enjoy some of the best specimens in town. In time, the George Street park will also feature Camellias and Magnolias. The first plantings, though, will be of deciduous trees. It is now time to offer you the opportunity to take a stake in the park by sponsoring a tree, or perhaps several trees. For those who are long term residents of Berry or for others who are pleased with their decision to relocate to our beautiful district, a tree can be a statement that you have belonged to this



community. For some, a tree may be a reminder of someone lost. There will be no plaques but those who sponsor a tree will be provided with a record of its name and location. Sponsorship will be for \$100. We invite you to contact Mary Seelis on 4464 1191 or at sel4957@bigpond.net.au to express your interest. Act quickly to get the most choice from a range of natives, exotics – deciduous and non-deciduous, and blossom trees.

The community is already showing great appreciation of the developing park. The support of local contractors and suppliers has been invaluable but so too have been the untiring efforts of the Club's Plant Propagation group (see photo). The money raised by the selling of thousands of potted plants at the Small Farms Field Days in September and at our October Gardens Festival has formed the financial backbone of the project.

The next Garden Club meeting will be held in St Luke's Church Hall in Princess St on

56th 
Berry Camellia & Floral Show

2018
Berry School of Arts
Alexandra Street, Berry
 Saturday August 4th & Sunday August 5th
Doors open
 Sat 12 - 4pm & Sun 10am - 2pm
 Presentation of Trophies, Saturday 12.30pm
Admission \$5.00 into the show
 (Children under 18 free)
 Light Lunches available
www.berrygardens.org.au
 Ph: (02) 4464 2061

Tuesday, 21 August at 7.30pm. As this will be our AGM, there will be no Guest Speaker. For more information about the Garden Club or the Camellia & Floral Show, please contact our secretary, Mary Seelis, on 4464 1191 or visit us on our informative website www.berrygardens.org.au

ADVERTISEMENT

Gareth Ward

Member for Kiama



"Working for Berry"

Can I help you?

P 4232 1082 | F 4232 3577

E kiama@parliament.nsw.gov.au

W www.garethward.net.au

A 102 Terralong Street, Kiama NSW 2533.



Authorised by Gareth Ward MP, 102 Terralong Street, Kiama NSW 2533.
 This advertisement was produced using parliamentary entitlements.



SCOTS' PRESBYTERIAN

CHURCH, BERRY

All Welcome!!!

Service Time: Sunday 10am

Sunday School: Sunday 10am

Minister Rev Isaac Jung - 4464 1020

Cnr Alexandra Street & Victoria Street
 Berry

Our purpose is to
 Love God with our heart, soul, mind and might
 and to
 Love our neighbour as ourselves.

Ordinary people worshipping an
 extraordinary God

www.berrypresbyterian church.net.au



'Proclaiming Christ,
 serving the community
 with love'

Berry Uniting Church

77 Albert Street Berry

P: 4464 2904

E: berryuniting@gmail.com

Sunday Celebrations: 9.30am

Groups & Activities:

- Bible Study Groups
- Fellowship Groups • Prayer Groups
- Social Craft Group
- Computers for Seniors
- Berry Apple Users Group
- Coffee and Friends
- Berry Community Library

www.berryuniting.org

WHAT'S FRUITING NOW

Two small trees that could be confused at first glance because of the shape and size of the fruit are Cheese Tree (*Glochidion ferdinandi*) and White aspen (*Achronychia oblongifolia*).

The flowers of both trees attract bees and butterflies during summer and the fruit is a good source of food for birds (Green catbird, Satin bowerbird, Topknot pigeon, and White headed pigeon), during autumn and winter.

CHEESE TREES

The fruit of the Cheese tree are distinctively lobed and look like small flattened green, yellow or red pumpkins.

The glossy leaves are pointed and have a well defined yellow central vein.

The trees are very hardy and are common

from the escarpment to the coast. Many trees can be found in the car park area at Seven Mile Beach.

The outer part of the fruit of the Cheese tree become brittle when ripe and reveals bright orange seeds which germinate readily. Cheese trees usually finish fruiting in autumn.

WHITE ASPEN

The fruit of the White aspen are lobed and similar in shape to the Cheese Tree fruit, but smaller, white and more globular in shape.

The leaves have a broad round apex and have a distinct citrus smell when crushed.

Some people refer to White aspen as the Tic Tac tree because the edible fruit are crisp and refreshing.

Although White aspen is less common than cheese trees, (germination is not always reliable), it does occur at the edge



of rainforest or in moist eucalypt forest and occasionally along the coast. It often grows in small groups along road verges.

The fruit of the White aspen continue well into the colder months. There are a few small White aspen on the high side of the verge in Bundewallah Road that are still in fruit.

Other trees are probably fruiting in semi shaded verges along other country roads and lanes, too.

THURSDAY 9th AUGUST is OPEN/GRANDPARENT'S DAY at BPS

The new nursery (located next to the school hall) will be open from 9.30am -2.30pm.

Visitors are most welcome.



Lobed fruit of the Cheese tree



Bright red seeds of the Cheese tree



Small fruit and leaves with rounded end



White fruit with small black seeds



BERRY MEN'S SHED

A CAROUSEL OF SHOES

From time to time the Shed is asked to undertake very unusual projects, often because no one else will do them. This was the case for the Shoe carousel. The major project was to build for a client a carousel to hold around 100 pairs of shoes and to be incorporated into a cupboard. Project leader Peter Johnstone jumped at the opportunity but did not envisage it would take seven months to complete. A special team took on the job which involved using unique timbers such as Brazilian mahogany and special MDF pieces. The lady for whom it was being made brought in some designs but was not entirely sure of the dimensions, following discussions with Peter and a payment of a substantial deposit the work commenced. The carousel had to revolve and therefore needed to be connected to a spindle that could hold a weight of around 120kg. The outside timber frame also had to contain a full-length mirror when the door was closed. Although there were no major problems during construction the project was one of our most challenging projects since the full-scale Tardis was built several years ago.

*Bob Matheson,
Christine
Murphy,
Geoffrey
Dobbin with
project leader
Peter Johnstone*



For delivery the unit will need to be dismantled and will take four members of the Shed to erect it in the client's bedroom.

The Shed's AGM is scheduled for 13th September at the Berry Uniting Church hall commencing at 11.00pm. All financial

members are invited to attend.

The Shed is open on Tuesday and Thursday and you can call in or phone us on 4464-3956 on those days.

Richard Wiseman, Secretary



Well here we go in to another term of mainly music. How the time flies when you're having so much fun. The group has lots of diverse ways we can share and learn through the use of song, music and movement as well as being with other people, both child and adult. The great advantage is that we are all sharing experiences together without being judged. Parents are willing to offer ways that have worked for them in bringing up children and share how they have coped in variety of ways. In addition, offering friendship and a safe place to share ideas is so important for the family especially those who are new to the area as well as new mothers. The team members are all willing to listen and support when it is appropriate, whether it be assistance with a child's development, as listening ear without judgment even helping with babysitting if required. Mainly music is a group run at the Berry Community church every Tuesday during school term at a cost of \$5.00 per family, per session. We start at 10.00 am and finish around 11.30. If you need more information, contact Trish on 0401 151 820.

The Merroo Union Church Fete

Grateful Thanks

To all who supported us on the day and made it such a success.
Funds raised cleared \$2,000



YES, IT'S ON AGAIN!!! IT'S ALL TRIVIA!!

The well-loved ZONTA TRIVIA QUIZ is coming back to town – and you're invited!!

An important fund-raiser for the year, this popular event will be held on September 15 at the Uniting Church Hall, Berry. The theme will be The World of Art, and you are asked to dress your table and yourselves appropriately – black berets, paint-splashed shirts, favourite artwork – no nudes, please!

Bring along your own picnic food and wine – and your cleverest friends. Your table could be a winner!

Starting time, 6.30pm, cost \$25 per head, including tea, coffee and cakes. You can book online at www.trybooking.com/WVSR for tables of 8, (include your name), or if you're short of friends, come along and join a table.

Great Auction prizes, plus prize for best dressed male and female.

What more could one ask???

NEW BOARD

The recent AGM resulted in some new blood being added to the board, and plans are in hand for more events – watch for the date of our next Birthing Kit Assembly Day, inviting all community members to join in.

NEW MEMBERS

We were delighted to welcome three new members to the Club, inducted at our monthly dinner meeting.

DINNER MEETING

Interested to learn more? Come along to our dinner meeting, held on the fourth Tuesday of each month, 6.30 for 7pm at the Coachhouse Restaurant, Hotel Berry. Please book with Cec Lewis on 4464 3913.

Pictured Above: Helen Ellison, Jacqui Crapp and Barbara Davis



AND LIKE US ON FACEBOOK!



Genevieve Lacey, Jane Gower & Lars Ulrik Mortensen
SUNDAY 26 AUGUST



Siteworks
SATURDAY 29 SEPTEMBER

See website for more details

BUNDANON.COM.AU

Connect with us



ST. LUKE'S

ANGLICAN CHURCH

68a Princess Street Berry

Serving the Berry community since 1873

Acting Rector Bishop David Mulready

Join us for Sunday services

8:00 am (Traditional) or 9:30 am (Families)
or the 1st, 3rd and 5th Thursdays at 11:00 am (Communion)

Phone 4464 1058 or Email office@berry.anglican.asn.au

For information on activities www.berry.anglican.asn.au



Berry Evening VIEW Club meets at the Berry Bowling Club on the third Wednesday of the Month. If you read last month's Town Crier, you will know we help the Smith Family and are part of the Learning for Life Program that is helping a chosen student with some of the expenses that arise with education these days. We are making a difference and not just us; VIEW Clubs throughout Australia all help with this worthy cause. I think it helps the child's outlook knowing there are Clubs out there willing to help and give someone a go. Their self-esteem is boosted to go on and get out of the tough situation that they have been living in through no fault of their own. The parents have to follow the rules and in some cases a child has been taken off us because these weren't fulfilled but there is always another in line waiting to be helped.

Our monthly meeting is at 6.30 pm for a to 7 pm start and if you feel you would like to join us (or can't make it that night), Ring Jan Chambers on 44642181. Jan will book you in or out but ring before 12pm on the Sunday before the meeting.

Coming up is our Birthday night in August; We are having a trading table and it are relying on food donations to resell. Please write the ingredients on the jar or container and I am sure someone will buy it and the proceeds all go to the cause. You can dress in the VEIW colours which are green and purple. Coffee mornings again at Fig bird 10.30 am on the first Thursday of the month. We have more guest speakers coming up and other entertainment so do come along and join us.

Yolande, Publicity

Berry Riding Club – Riding Fun for Everyone



The start of the new financial year is a great time for new members to come and join our fun and friendly club. Memberships are available for singles or families, or a single day for riders who simply want to join us for a specific event. And there are so many fantastic events coming up for all levels and ages. Check out berryridingclub.com for all of the information you need to join, and to see what's on the calendar for the remainder of the year.

The establishment of our new riding arenas and facilities is slowly coming together, with only the final Council licence required before we can commence using the new section of the grounds. The new grass riding arenas will be used primarily for dressage and working equitation, with our show jumping and eventing remaining on the lower section of the BRC grounds.

Like any community organisation, we are always grateful to those who provide financial assistance to our club. A major fundraising activity for BRC is the annual Inter-school Equestrian Championship in October, where hundreds of primary and high school riders and their families travel from near and far for a weekend of competition. This event is a wonderful opportunity for businesses to gain exposure through sponsorships, and we welcome any local companies to get in touch with our secretary to find out more about how we can help each other.

We're also grateful for assistance from Corrective Services in the upkeep and

maintenance of our grounds. Donated mulch from A & D Tree Services & Asplundh has been spread to help establish the trees on our boundary fences, and they have been working hard with mowers and whipper snippers to keep the grounds looking great. Sincere thanks to A & D Tree Services & Asplundh for their support of the Berry Equestrian Centre.

Over the coming month you'll notice a number of events at the grounds – there will be kids and ponies of all shapes and sizes at our Youth Training Days, riders enjoying the “galloping grownups” on Tuesdays and Thursdays, showjumpers competing at heights from x-rails to 1.2 metres, eventers training over cross country jumps, and many riders and horses testing their skills and horsemanship in working equitation clinics and competition.

So if you've been thinking about bringing your horse to Berry Riding Club, come and join us! There are so many reasons to become part of our friendly, welcoming club.



Bringing Music to Life

BERRY MUSIC CENTRE

- » Back to School Music Needs
- » Musical Instruments & Accessories
- » Instrument Repairs, Restring & Instrument Hire
- » Audio Equipment, Sheet Music,
- » CDs, DVDs, & Vinyl
- » Memorabilia & Music Giftware
- » Shoalhaven Entertainment Centre Box Office

Berry Music Centre - Your Local Music Store
Shop 1 / 118 Queen St Berry NSW - Ph **4464 1284**

SHOALHAVEN CITY COUNCIL NEWS FROM BERRY

THE BERRY FORUM IS THE COMMUNITY CONSULTATIVE BODY

The following Development Applications and determinations have been notified during the month. They are also placed on the Community Noticeboard and posted on the Forum website www.berryforum.org.au Details of applications, including submissions, can be viewed on Council's website at www.shoalhaven.nsw.gov.au and select **DA Tracking**.

	Development Applications Received	Address	Lodged
DA18/1691	New rural dwelling	265A Bundewallah	28-Jun
CD18/1358	Detached secondary dwelling	7 Albany Lane	2-Jul
CD18/1360	Dwelling additions and renovation	5 Wire Lane	2-Jul
DA18/1708	Regularisation to existing structure to create eco tourism cabin	476B Brogers Creek Road	3-Jul
DA18/1714	New rural dwelling, pool & realignment of building envelope	16 Bluff View Wdhill	3-Jul
DA18/1722	New rural dwelling, pool. Demolition of existing structure.	64 O'Keefes Lane	4-Jul
DA18/1738	Change of Use - From Wholesale Nursery to Retail Nursery	45 Agars Lane	6-Jul
DA18/1744	Single storey dwelling	37 Parker Crescent	10-Jul
DA18/1750	Alts & Addns to B&B. Create Tourist Cabin & Construct Carport	B35 Princes Highway	11-Jul
DA18/1771	Regularisation of Unauthorised Road Works	275 Bong Bong Road	13-Jul
	Development Applications Determined		
DA18/1319	New two storey urban dwelling	24 Tressider Close	23-Mar
DA18/1334	Alterations and additions to dwelling	11 Mt Vista Close	27-Mar
DA18/1508	New single storey dwelling	111 Parker Crescent	9-May
DA18/1462	Rural shed	117 North Street	27-Apr
DA18/1445	Single storey dwelling	32 Tressider Close	23-Apr
CD18/1360	Dwelling additions and renovation	5 Wire Lane	2-Jul
DA18/1468	Two storey urban dwelling	119 Parker Crescent	1-May
DA18/1412	Small farm dam	31 Old Pioneer Crescent	16-Apr
DA18/1446	Rural dwelling additions	120 O'Keefes Lane	23-Apr
CD18/1358	Detached secondary dwelling	7 Albany Lane	2-Jul
DA18/1562	Alterations and additions	225A Tindalls Lane	23-May
DA18/1597	New Urban split level dwelling	29 Parker Crescent	1-Jun
DA18/1519	Decking and pergola	3 Parker Crescent	14-May
DA18/1619	Demolition of Existing Garage	51 Queen Street	8-Jun



Reference Guide



SUBJECT	DETAILS
Chemical Recycling	Agricultural and veterinarian chemical disposal Agsafe ChemClear program 1800 0080182 – agsafe.com.au
Recycling for businesses	Business Recycling 1300 763 768 businessrecycling.com.au
Mattress Recycling	Mission Australia have a depot in Bellambi. Cost \$25 to drop off. 1800 763 852/softlanding.com.au. \$28 charge at the Berry Waste Depot.
Fridge Buyback program	For eligible households, free collection and \$25 rebate. 1800 708 401 fridgebuyback.com.au If you're not eligible for the program, the Berry Depot charges \$12 to take old fridges.
Battery recycling	Berry Waste Depot and Aldi Supermarkets.
Out of date medications	Don't put in landfill or wash down the sink. Return to place of purchase or local chemist.
Mobile phone recycling	Drop off points for Mobile Muster can be found at Post Offices nationally. Closest retail outlets in Nowra are the Optus or Telstra shops, Officeworks, and Shoalhaven Council Administration centre. 1300 730 070 www.mobilemuster.com.au Greener Mobile buys old mobile phone (along with tablets and smart watches) and pledges to plant a tree for every device they recycle. 1300 128 900 greenermobile.com.au
Energy saving tips	energyrating.gov.au livinggreener.gov.au 10percentchallenge.com.au/household-tips/ energy.gov/energysaver/energy-saver
Ethical shopping	behindthebarcode.org.au and goodonyou.com.au
Council workshops	Shoalhaven run free courses on garden waste recycling and other topics. They fill quickly, so you must book. Check the website for upcoming courses. calendars.shoalhaven.nsw.gov.au/Waste-Management-Events
Recycling / reuse at local shops	Some retailers may fill your own containers for take away food, egg cartons may be taken back to the place of purchase for reuse, and original containers. Flavours Shoalhaven refill Morella Grove olive oil glass bottles. Leaf Thai restaurant will fill your own containers when you order take away food.
Sharps Disposal	Medically generated syringes, needles and sharps can be disposed of for free at the Berry Pharmacy. Take your sharps in a sealed puncture resistant container. The pharmacy will also safely dispose of out of date medication.
Alternatives to plastic	Plastic bags for dog waste; buy compostable cornstarch-based bags like those at www.goinggreensolutions.com.au Bin liner bags; wrap messy scraps in newspaper. Rinse out bin as required. Drinking straws; buy a set of reusable toughened glass / metal and keep one in each of your family's bags. www.shopnaturally.com.au Choose wooden clothes pegs.
Environmentally conscious brands to support	IGA stocks: If You Care (household cleaning, cooking and storage products, toothbrushes); Ansell eco-rubber gloves; Ecostore cleaning products; Safe toilet paper (paper wrapping). Nourish Kitchen + Lifestyle stock beeswax wraps for food, as well as kits to DIY; White Magic cleaning and food storage products; Keepcups, Avanti, Teaology, Casa Barista and Earth Bottles for your take away coffees and other beverages.
Mobile Library	Shoalhaven Council has a mobile library service. The bus can be found in Princess Street just past the School of Arts building, every Friday from 2.00 pm to 4.00 pm. Borrowing books and DVDs is a great way to read / watch more without having to buy more stuff.

Berry Restaurants & Cafes, Functions & Catering Guide

RESTAURANTS & CAFES

HEDGEHOGS COFFEE SHOP

4/98 Queen Street, Berry - t 4464 3051

7 days - 8am to 4pm

www.hedgehogscoffeeshop.com.au

SAVANNAH CAFE

Stan Burt Arcade, Berry - t 4464 3880

Please note our NEW opening hours

Closed: Tuesday

Lunch: Everyday from 11am except Tuesday's
Breakfast: Weekends & Holidays ONLY from 9am
Dinner: Friday and Saturday nights from 5.30pm -
bookings are essential!

FUNCTIONS & CATERING

BERRY COURTHOUSE AND GARDENS

Corner Victoria Street and
Albany Street Berry 0458 369 266

www.berrycourthouse.org.au

functions@berrycourthouse.org.au

Facebook Berry Courthouse

Functions, Weddings, meetings inside historic
Courthouse and in purpose designed gardens.

SAVANNAH CAFÉ

Stan Burt Arcade (shop 5 - in the arcade
behind Cuckoo Corner)

t 4464 3880

www.savannahcafebar.com

Facebook:

facebook.com/savannahcafebar

If you would like your restaurant
listed here please contact Nancy Davies
0428 037 572 or Email
towncrier@berryalliance.org.au



GET IN TOUCH WITH THE EDITOR,
NANCY DAVIES, TO FIND OUT HOW.
TOWNCRIER@BERRYALLIANCE.ORG.AU
OR 0428 037 572

Calendar of Events

JULY/AUGUST

27 July - Friday - National Tree Planting Day for Schools. The Berry Public School Plant Propagation Nursery will continue to plant more species in The Tree Orchard, but the plant propagation program will also adopt Clarence Street verge for planting.

2 August - Thursday - ADFAS lecture on Rossetti's Women, 7.30 at The Berry School of Arts, Alexandra St, Berry.

5 August - Sunday - Garage Sale - no earlier than 11am. 78 Woodhill Mountain Road Berry. Furniture (chairs – sets and individual, tables, bookcases..) Jetmaster fire and surround, tools (dust extractor, power tools, hand tools, air scrubber etc.), glassware, crockery, catering supplies (dozens of wine and tulip glasses), table cloths, books and more. 4464 2446.

9 August - Thursday - OPEN/GRANDPARENT'S DAY at BPS. The new nursery (located next to the school hall) will be open from 9.30am -2.30pm.

Visitors are most welcome.

19 August - Sunday - Friends of Meroo Union Church will be conducting their regular Monthly Service at 2pm. Non-denominational, all most welcome. Afternoon Tea follows the service. Cnr Boxells Lane & Princes Hwy. Meroo Meadow. Contact Rae 4448 6048.

21 August - Tuesday - Berry & District Garden Club monthly meeting & AGM, 7.30pm in St Luke's Church Hall, Princess Street, Berry.

25 August - Saturday - 2:30pm - Shoalhaven Lydian Singers present MEASURE FOR MEASURE at Berry School of Arts. TICKETS: \$30, Concession: \$25, Students: \$10, Under 15 FREE. Afternoon tea included. <http://www.lydiansingers.org.au> Contact: 02 4422 0451.

26 August - Sunday - 2:30pm – Shoalhaven Lydian Singers present MEASURE FOR MEASURE at Nowra School of Arts. TICKETS: \$30, Concession: \$25, Students: \$10, Under 15 FREE. Afternoon tea included. <http://www.lydiansingers.org.au> Contact: 02 4422 0451

30 August - Thursday - ADFAS lecture on Children's Book Illustration, 7.30 pm at The Berry School of Arts, Alexandra St, Berry.

31 August - Friday - ADFAS Special Interest Day, 10.00 am at The Berry School of Arts, Alexandra St, Berry.

REGULAR EVENTS:

Mainly Music - for preschool-aged children and their carers. Every Tuesday during term time at 10am. Venue Berry Community Church, Schofields Lane. \$5

The Berry Computers for Seniors meets in the Berry Uniting Church hall on the first and third Wednesdays of each month from 9.00 - 10.30am.

The 'Third Wednesday Book Group' will meet in the Community Library June from 4-6pm. We bring along our favourite books or talk about our favourite authors and enjoy drinks and nibbles along the way. Everyone is welcome.

FUTURE DATES

15 September - Sunday - Volunteering Expo at Berry Courthouse from 11 am until 3 pm. Come and meet some local volunteers and find out what they do in our community and how you might be able to help.

16 September - Sunday - 2-4 pm Berry Conversations. Journalist and broadcaster, Kerry O'Brien appearing with Dr. Helen Caldicott physician and anti-nuclear campaigner. Berry Public School Hall. \$30 includes refreshments. Tickets available at trybooking.com.au or Berry Music Centre. Contact: berryconversations@gmail.com

16 September - Sunday - Friends of Meroo Union Church will be conducting their regular Monthly Service at 2pm. Non-denominational, all most welcome. Afternoon Tea follows the service. Cnr Boxells Lane & Princes Hwy, Meroo Meadow. Contact Rae 4448 6048.

Annual Events Guide for Berry 2018

For more information regarding each event please refer to the community group listing on the next page.

Registered Community Groups organising annual events are welcome to contribute and advise of further information or changes to listed information.

MONTH	EVENT
RECURRING MONTHLY EVENTS	<p>First Sunday of the Month</p> <ul style="list-style-type: none"> • Penwood Railroad Inc, a scenic miniature railway open from 10:30am till mid afternoon. 215A Princes Highway - Jaspers Brush NSW - Ph: 02 4464 1201 • Berry Country Fair (Berry Markets). Approximately 200 stalls selling handmade products, arts and crafts, fresh produce and more. Berry Showground
JANUARY	
FEB	131st Annual Berry Show – 1st & 2nd Feb 2019 Berry Showground
MARCH	
APRIL	ANZAC Day Youth Week Easter Celebrations
MAY	Berry Celtic Festival, Berry Showground National Motoring Heritage Day, Berry Showground
JUNE	
JULY	
AUGUST	4th & 5th - Annual Camellia and Floral Show
SEPTEMBER	Berry Small Farm Field Day
OCTOBER	18-21st - Berry Garden Club's Annual Garden Festival
NOVEMBER	Remembrance Day
DECEMBER	<p>4th December Berry Men's Shed Annual Garage Sale</p> <p>Berry Merry Christmas</p> <p>Carols in the Park, Apex Park</p> <p>Rotary's New Year's Eve Fireworks Berry Showground</p>

BUSH FIRE DANGER PERIOD AND FIRE PERMITS

The statutory bush fire season finished on 30th March 2018. Fire Permits are no longer required in the Shoalhaven; however, some rules still apply. Before you light, you must give 24-hours' notice to your neighbours and 24-hours' notice to the RFS Shoalhaven District office (4424 4424) if your fire is in a rural fire district. Just because the bush fire season is over, it doesn't mean that fires are not a risk and as the land owner you have a responsibility to ensure the safety of others.

For more information go to <https://www.rfs.nsw.gov.au/fire-information/BFDP>



THE SHOALHAVEN LYDIAN SINGERS PRESENT:

MEASURE FOR MEASURE

We have selected great choral works from composers who have used the immortal words of Shakespeare's plays and sonnets for the text of their compositions. Performances both at 2:30pm on Sat 25th August at the Berry School of Arts, and Sun 26th August at the Nowra School of Arts. BOOK ONLINE via www.TryBooking.com with Promo Code OBERON, or buy tickets at the door. Adults \$30, Concessions \$25, Students \$10, Under 15 free. Contact 02 4422 0451 for more information.

GARAGE SALE

Sunday 5th August 2018

**Commencing no earlier than 11am
78 Woodhill Mountain Road Berry**

Furniture (chairs – sets and individual, tables, bookcases)
Jetmaster fire and surround,
tools (dust extractor, power tools, hand tools, air scrubber etc.),
glassware, crockery,
catering supplies (dozens of wine and tulip glasses),
table cloths etc. books and more.

BERRY VOLUNTEERING EXPO

**SUNDAY 15TH
SEPTEMBER
AT THE BERRY
COURTHOUSE FROM
11AM UNTIL 3PM**

**COME AND MEET
SOME LOCAL VOLUNTEERS
AND FIND OUT
WHAT THEY DO IN OUR
COMMUNITY AND HOW YOU
MIGHT BE ABLE TO HELP**

Community Groups

BERRY COMMUNITY GROUPS

Berry Alliance Inc. 0449 569 059
PO Box 202 Berry 2535
info@berryalliance.org.au
www.berryalliance.org.au

Berry Alliance Town Crier 0428 037 572
PO Box 202 Berry 2535
towncrier@berryalliance.org.au
www.berryalliance.org.au

Berry Chamber of Commerce & Tourism Inc.
PO Box 216 Berry 2535 4464 3122
info@berry.org.au www.berry.org.au

Amnesty International Berry Local Action Group
PO Box 397, Berry 4464 2879
Contact Susan Locke
info@berryamnesty.happenings.id.au

Australian Red Cross 4464 2479
Honorary Secretary -
Margaret Walsh 21 Windsor Drive Berry
1st Wednesday each month at 2.00pm
Berry Uniting Church

Berry Alcoholics Anonymous 1300 903 392
Meets every Thursday Night at 7.30pm,
Uniting Church Hall Annex,
77 Albert Street, Berry - Garry: 0420 932 494

Berry Al Anon Family Group For family & friends of problem drinkers 4448 8231
Meets in the Friendship Rooms of the Uniting
Church 77 Albert Street Berry on Mondays at 7pm

Berry Forum (Community Consultative Body)
www.berryforum.org.au
2nd Thursday bi-monthly 7.30pm at the
School of Arts Berry

Berry Community Activities Centre Inc. 4464 1476
Berry Community Craft Cottage
12 Prince Alfred St Berry 2535
1st Monday Monthly, 5pm @ Muir House
berrymarkets@bigpond.com

Berry Courthouse Conservation Committee
PO Box 218 Berry 2535 0458 369 266
2nd Monday Bi-monthly at 5.30pm
at the Berry Courthouse
functions@berrycourthouse.org.au
www.berrycourthouse.org.au

Berry Evening View Club 4464 1191
Secretary, PO Box 275
sel4957@bigpond.net.au
Meets 3rd Wednesday monthly, 6.30 pm
at Berry Bowling Club

Berry Masonic Village Auxiliary Inc 4464 1774
Mail: 42 Albany Street, Berry, NSW, 2535
3rd Wednesday monthly, 9.30am in Activity
Hall, Albany Lane, Berry Masonic Village

Berry Meals on Wheels 4464 1604
PO Box 221 Berry NSW 2535
3rd Monday monthly at 9am RSL Hall Berry

Berry Men's Shed 4464 3956 / 4464 2619 A.H
PO Box 103 Berry 2535
richardcwiseman@hotmail.com
Tuesdays and Thursdays 9am-4pm
North Street Berry www.berrymentshed.com.au

Berry RSL Sub Branch
PO Box 3307 North Nowra 2541 -
stuartfchristmas@gmail.com
1st Tuesday Monthly at 9.30am
Sub Branch Hall 26 Alexandra St Berry

Berry Rotary Club 0408 979 337
PO Box 81 Berry 2535
barker_killaloe@hotmail.com
Every Thursday 6pm for 6.30pm at
Bowling Club - www.berryrotary.org.au

Berry Show Society Inc. 4464 1567
PO Box 173 Berry 2535
Meet 1st Tuesday monthly at
Committee Rooms at the Showground
berryshow@virtualcity.com.au
www.berryshow.org.au

Berry Showground Management Committee
PO Box 443 Berry NSW 2535 -
berryshowground-camping@gmail.com
Meet 2nd Monday Bi-monthly 7.30pm
Old Council Chambers
24 hour Caretakers / Bookings
Caretakers 0427 605 200

Boomerang Bags Berry 0416 181 543
Meetings: 1st Tuesday of the month:
Committee Rooms, Berry Showground.
Contact: Katrina Underwood 0416 181 543
Contact Elizabeth Dubbelde 0431 663 189

**Country Women's Association
- Berry Branch**

PO Box 321 Berry 2535
2nd Friday each month at 12.30pm
in the CWA Rooms, Victoria Street
Contact Emily Boorer 0417 423 018

**Conservation Committee for the Berry Railway
Station Precinct**
Meets fortnightly at the Berry Museum
Contact: sandraberner@hotmail.com

David Berry Hospital Auxiliary 4464 1774
PO Box 285 Berry 2535
bke25349@bigpond.net.au
2nd Monday Monthly, 12.30pm
David Berry Hospital Conference Room

Freemasons Lodge Broughton 131 4421 7346
PO Box 2092 Bomaderry NSW 2541
Secretary: John Dyason
lodgebroughton131@gmail.com

Jaspers Brush Airport Action Group Inc.
www.takeaction.org.au
PO Box 428 Berry NSW 2535
Meeting as convened

Lodge Broughton 131 4421 8026
P.O. Box 2092 Bomaderry 2541 NSW
lodgebroughton131@gmail.com
Meets 1st Wed. of each month except
Jan. at the Agricultural Hall Berry

Probus Club of Berry 4464 3525
PO Box 68 Berry 2535
berryprobus@gmail.com
Meets 2nd Tuesday monthly, 9.30am
Berry Masonic Village Hall

Shoalhaven Poultry Group 0410 548 704
161 Kangaroo Valley Road
1st Wednesday each month above address
info@shoalhavenpoultry.com.au
www.shoalhavenpoultry.com.au

St. Vincent de Paul Society Client Help Line:
PO Box 77 Berry - Ph 4464 3940 4421 0390
Vinnies Boutique Shop 117b Queen St Berry
Conference meets every 1st Mon.
7pm St. Patrick's Hall

Zonta Club of Berry
Ph 4464 3913 (Cecilie Lewis)
or 4464 2653 (Leonie Winlaw)
PO Box 302 Berry 2535
Email: berry@zontadistrict24.org
www.zontadistrict24.org
Meets 4th Tuesday monthly for dinner

ARTS

Berry School of Arts
Office open Thurs and Fri 10am till 3pm.

Australian Decorative Fine Arts Societies - Shoalhaven
PO Box 269 Berry NSW 2535 0429 549 942
www.adfas.org.au/shoalhaven/
Monthly, 7.30pm at The Berry School of Arts

Berry & District Historical Society Inc
PO Box 153 Berry 2535 4464 3097
berrymuseum@bigpond.com
www.berryhistory.org.au

Berry Silver Band (est. 1897)
Owen 4464 1250 / Kaye 4465 1240
6 Clarence Street Berry 2535
kayecj@westnet.com.au
Meet Monday evenings 7.30-9.30pm,
Agricultural Hall, Berry Showground

Berry Spinners and Weavers
Contact the secretary (Alison) on 0422 760 363
PO Box 377 Berry 2535
berryspinnersandweavers@gmail.com
Thursdays 10-12noon at Berry Showground Hall

Cantares: Community Choir
Monday 7.30 - 9.00pm
Scots' Presbyterian Hall, Alexandra Street Berry
Contact: Peter Dalmazzo 4448 6164

Knit with Love
Lyn 4464 3651 c/- 34 Princess St Berry 2535
terryandlyn@gmail.com
Meets Every Friday 1pm - 3pm
St Luke's Anglican Church Hall

RedBerry Quilters
Meetings held on the 4th Friday of each month
9.30am-1.30pm. Sewing Days held on the
2nd Friday of each month 9.30am-1.30pm at
St Luke's Anglican Church Hall, Princess Street
Please contact mail to:
secretary@redberryquilters.org

CHURCHES

Berry Community Church 4464 2315
8 Schofields Lane Berry
Services 9.00am, 10.00am and 5.00pm
info@berrycommunitychurch.org

Berry Uniting Church 4464 2904
77 Albert Street Berry
Services at 9.30am
berryuniting@gmail.com

Meroo Union Church 4448 6048
Monthly service at 2pm
(3rd Sunday of the month)
Corner of Boxells Lane & Princes Hwy,
Meroo Meadow. Contact Rae 4448 6048

St. Luke's Anglican Church 4464 1058
68A Princess Street, Berry 2535
office@berry.anglican.asn.au
www.berry.anglican.asn.au

St. Patricks Catholic Church 4423 1712
Albert St. Berry - Normal Mass times:
Sunday 8am Tuesday 5.30pm
Community Group PO Box 304 Berry meets
2nd Monday 7pm St. Patricks Hall

Scots' Presbyterian Church in Berry
E. isaac.jung@hotmail.com 0405 139 031
H. 81 Victoria St Berry

EDUCATION AND PLAYGROUPS

Berry Apple Users Group 0416 168 638
P.O. Box 103, Berry, 2535
Meets at 7.00pm on the 2nd Tuesday of the
month (except January) at
Berry Uniting Church Hall,
77 Albert Street, Berry
Email: berryappleusersgroup@gmail.com

Berry Community Pre-school 4464 1764
PO Box 143 Berry 2535
berrypreschool@bigpond.com
www.berrypreschool.org.au

Berry Computers for Seniors 4421 3270
PO Box 103 Berry 2535
1st and 3rd Wednesdays of each month,
9.00 - 10.30am, Uniting Church Hall,
77 Albert Street, Berry

Berry Ethics Society 0451 153 332
PO Box 363 Berry - Meets 1st Monday of each
month at the Berry Hotel

Berry Playgroup
Berry Community Church Hall
Schofields Lane, Berry. Fridays 10.00-12.00
Facebook: The Berry Playgroup
Email: berryplaygroup@hotmail.com

Berry Public School P&C Association 4464 1158
PO Box 222 Berry 2535
berrypandc@gmail.com

Mainly Music 4464 1693
Berry Community Church Hall -
for children under five and parent /carers
Meets Tuesdays during school term
10-11.30am \$5 per family

GARDENING AND LAND CARE

Berry & District Garden Club 4464 1191
PO Box 122 Berry 2535
3rd Tuesday Monthly, 7.30pm
St Luke's Church Hall, Princess Street
Mary Seelis - Secretary
www.berrygardens.org.au

Berry Landcare 4464 2241
PO Box 422 Berry NSW 2535
berrylandcare@gmail.com
See monthly article for working bees

Berry Public School Plant Propagation Nursery
Lyn 02 4464 3911
Meet Thursday afternoons during school hours
lyn-clark@outlook.com.au

Brogers Creek Landcare 4465 1482
53 Wattamola Road Wattamola NSW
Last Saturday of each month 2.30-4.30pm

Gateway Community Garden
141 Woodhill Mountain Road
All welcome, plots available.
Contact: Tom Darby 4464 2859

Hands Across NSW Inc 4446 0567
PO Box 162 Cambewarra NSW 2540
Meets 1st Sunday, monthly at Broughton Lodge,
Berry Agriculture Hall

POLITICAL GROUPS

Australian Labor Party Berry 0429 012 796
Shoalhaven Heads Branch
Meets 2nd Wednesday each month,
6.30 pm Hotel Berry
secretarybshalp@gmail.com
PO Box 474 Berry 2535

Liberal Party of Australia - Berry Branch
0412 550 480 hartwell@bigpond.com
Meets 1st Monday of the month
06.30pm for 07.00pm start at Berry Hotel

RECREATION

Berry Bridge Club INC 4464 3009
PO Box 366 Berry 2535
mcorran@shoalhaven.net.au
Meets Saturdays @ 12.45pm-4.30pm at the
Masonic Lodge Community Hall

Berry Camera Club 0488 031 961
Meetings on 4th Wednesday of Each Month
6:00pm @ Berry Bowling Club
Info: www.berrycameraclub.com
fb:BerryCameraClub

Berry Crafters & Quilters 4464 3788
Meets each Wednesday 10am-4pm at
Muir Cottage, Prince Alfred Street

Penwood Rail Road Inc. 4464 1201
B215a Princes Highway Jaspers Brush 2535
Running day 1st Sun monthly - visitors welcome

Shoalhaven Historic Vehicle Club Inc. 4464 1723
PO Box 1, Nowra NSW 2541

SPORT

Berry Hockey Club 0412 218 704
PO Box 4055 Nowra East NSW 2541
www.berryhockeyclub.com.au

Berry Netball Club 0417 285 789
1 Barwon St Bomaderry Meets monthly at the
Great Southern Hotel MT816834@bigpond.net.au

Berry Men's Bowling Club
Berry Men's Bowling Club
PO Box 139 Berry NSW 2535 Club 4464 2995
President: L McNamara 4464 1868
Bowls Organiser: D Lambert 4464 2332
Bowls Bookings: 0475 768 249

Berry Junior Mixed Touch Football 0431 530 543
7 Boran Place Berry becantom2@bigpond.com
School term 4 - Thursday 4pm till 6pm at the
Berry Sporting Complex, North Street Berry

Berry Riding Club 4464 1143
445 Coolangatta Road Berry 2535
1st Tuesday monthly at the Berry Hotel
jasiy@bigpond.net.au www.berryridingclub.com

Berry Shoalhaven Head Rugby
League Football Club
First Wednesday evening of the month at
The Berry Hotel - 7pm Great Southern Hotel,
Berry. Email: berryjuniorleague@gmail.com
www.facebook.com/groups/325991097440833/

Berry Shoalhaven Heads Cricket Club
0422 688 901
PO Box 206 Berry NSW 2535
www.bshcc.nsw.cricket.com.au
2nd Monday of each month
during cricket season at the Berry Hotel

Berry Shoalhaven Heads Junior League
0414 973 795
PO Box 162 Berry 2535 bshjrlfc@hotmail.com
First Wednesday of the month
7pm at the Berry Bowling Club

Berry Tennis Club
PO Box 133 Berry NSW 2535
e: berrytennis@hotmail.com
Meet 7pm first Thursday of every second month
at Clubhouse at Tennis Courts

Berry Women's Bowling Club
Meet Tuesdays and Thursdays 9am during
daylight savings; 9.30 in winter @ Berry Bowling
Club. Contact Heather Fealy 4464 3624 or
Pam Tulloch: 4464 2284

Diamond Calisthenics Club
Jodie Dearsley 0414 655 129
Classes for ages 3-100 held Tuesdays at Berry
School of Arts, Cnr Alexandra & Princess Sts
www.diamondcalisthenics.com
diamondcalisthenics@hotmail.com

Shoalhaven Heads Surf Life Saving Club
Mackintosh Street Shoalhaven Heads
www.headssurf.com.au Facebook: Shoalhaven
Heads Surf Life Saving Club. Phone:
0432 331 915 or info@headssurf.com.au

EMERGENCY 000

Police Assistance Line (non-urgent Police reports) 131 444
Berry Police 4464 2175 - Fire and Rescue NSW 4464 1008 or 000
Rural Fire Brigade (Broughton Vale) 4464 1522
SES - For Emergency help in floods and storms 132 500

belle PROPERTY

Welcome to our office

With our office perfectly located as you enter the beautiful township in an elegantly restored heritage building, Belle Property Berry is primed to offer the local and nearby communities a real estate experience which other companies often aspire to but rarely achieve. One of the most experienced real estate teams on the South Coast is focused on bringing sellers and buyers together with an absolute commitment to exceptional customer service, professionalism, integrity and of course results!

Quality service begins with courtesy and respect, backed up with enthusiasm, a desire to support and help and a determination to ensure the job is done properly. Clear, open communication is essential in bringing the right properties and buyers together. Our team at Belle Property Berry take the time to understand what is important to their clients and make sure they are informed every step of the way. Time and time again, this has proven to be the difference between 'for sale' and 'sold'.

Gary Dale

Principal/ Licensee

0418 211 917

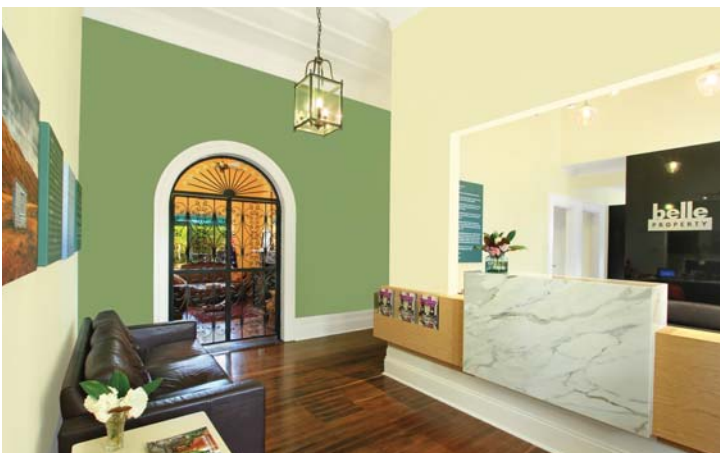
gary.dale@belleproperty.com

Nick Dale

Senior Property Consultant

0419 425 166

nicholas.dale@belleproperty.com



- 4464 1636 -
122 Queen Street, Berry

the
power of
humanity



**100 YEARS
PEOPLE HELPING PEOPLE
1914-2014**

ANNUAL GENERAL MEETING

Our Annual General Meeting was held on Wednesday 4th July 2018 at 1.30pm in the Uniting Church Wesley Hall.

Outgoing President Irene Birks gave a summary of the activities of the branch over the year which were many and have mostly already been reported in the Town Crier as they happened.

Jenny Edwards, the Representative of our Zone of Red Cross Branches, conducted the elections, with the following results:

President: Marilyn Kellett **2nd Vice President:** Robyn Messner
Secretary: Margaret Walsh **Vice Secretary:** Anne Webb
Treasurer: Felicity Coughlan **Vice Treasurer:** Virginia Munro
1st Vice President: Sue Speck

Jenny Edwards thanked the outgoing and incoming committees. Felicity Coughlan extended heartfelt thanks on behalf of the branch to Irene for her 9 years as President, a role she fulfilled with due diligence, warmth and friendship to all members. She was presented with a certificate of thanks from Red Cross. Irene thanked Jenny for attending and presented her with a small gift.

Jenny Edwards presented Fay Atkins and Sandra Escott with their 10 year Red Cross badges. Sheila Keats was eligible for her 20 year bar but was unable to attend the meeting to be presented with it then

ZONE CONFERENCE

The Conference for Zone 7, of which Berry Branch is part, is on 24th July, and 9 of our members will be attending. This is where we coordinate with other branches in our Zone and find out about their upcoming activities. Also we are informed about the details of any recent changes in Red Cross as a whole.

Chris Mansfield from Red Cross Membership will be a guest speaker and a talk will also be given to explain the new Red Cross Ethical Framework.

THE NEW RED CROSS ETHICAL FRAMEWORK

The new Red Cross Ethical Framework is replacing the Red Cross Code of Conduct. All active members and volunteers will have to sign this document, either on paper or on-line. An exact date this will come into force for our members is not yet known. Our members will find the details about this and what it means to us at the Zone Conference.



From Left to Right: Felicity Coughlan, Treasurer; Jenny Edwards, Zone 7 Representative; Irene Birks, outgoing President; Marilyn Kellett, incoming President and Margaret Walsh Secretary.

**BECOMING A MEMBER
OR VOLUNTEERING**

If you wish to find out about becoming involved with or volunteering with the Red Cross contact the Berry Branch of the Red Cross (see Community Groups page of Town Crier for contact details), the Nowra Red Cross Office (1800621433) in Graham St Nowra or go onto the Red Cross website.

Refurbishment of Town Clock to be Rededicated

The gateway to the Berry Apex Park has been adorned by a very impressive town clock and archway dating back to 1987 when the Rotary Club of Berry in association with the Shoalhaven Council originally constructed it. At that time, it was dedicated in memory of the Club's Charter President Jim Priddle.

However, as years passed and shrubbery grew the archway all but disappeared as a vine enveloped the archway and then the clock ceased to work.

The Rotary Club's President of 2013-14 David Ensor commenced endeavours to have the clock repaired, but after considerable effort and investigations it was finally declared as non-repairable, and so began the task of finding a matching replacement.

In the end, not only was a whole new clock mechanism sourced (together with 10-year battery power) but the metal casing was remanufactured to the same design and measurements as the original clock.

A Rotary working bee one Saturday morning (with Council approval) removed the offending vine to reveal the intricate and quite beautiful archway hidden underneath. This was subsequently steam cleaned and repainted to once again provide a majestic entrance to the park beyond.

On Saturday 18 August the Club will be holding a sausage sizzle between 10am and noon (with gold coin donation to Rotary's PolioPlus campaign) and at 11am Shoalhaven Mayor Amanda Findley will officially re-dedicate the refurbishment of the clock and archway in memory of the Club's late President David Ensor.

Everyone is welcome, so please come and enjoy a sausage sandwich and join with us on this civic occasion.



**Rotary
Club of Berry**



The Rotary Club of Berry always welcomes people interested in finding out more about the Club. Just contact Membership Director Phil Monaghan on 0428 946 268 or President Peter Stinson on 0438 130 748.

YOUR SELF STORAGE SOLUTION



1st MONTH FREE

2nd Month 1/2 Price *

Call Now

- Individually Alarmed Units
- 7 Days / Week Access

OPENING SPECIALS

- Packing Supplies
- Climate Control Wine Storage
- Commercial and Residential
- FREE move in trailer
- Solar Powered with TESLA Battery Storage

NEW Trade Units Available

Customised to your lighting and power needs
Call now to secure yours today
FREE Goods despatch and retrieval service



**ACCESS
STORAGE**

★ ★ ★ ★ ★

*TERMS AND CONDITIONS APPLY

Phone our friendly team on 4422 1955
or visit our website www.accessstorage.com.au

Access Storage - Cnr Merroo Rd and Victa Way Bomaderry



HELP SAVE THE BERRY STATION MASTER'S RESIDENCE



The Conservation Committee for the Berry Railway Station Precinct presenting local member Gareth Ward with the Petition.

The Berry community and friends overwhelmingly supported the Conservation Committee's Petition to help save the Railway Station Master's Residence from demolition with 3,665 signatures and Letters of Support from a number of community groups. Recently the Committee presented these to local member Gareth Ward who enthusiastically backs our call to preserve the Station Master's Residence and undertakes to personally hand the petition to the Minister

for Transport and Infrastructure when Parliament resumes this month.

The Station Master's Residence is part of a State and Local Heritage listed Precinct and is unique in that it is the only State Heritage listed example of its kind in RailCorp's ownership, still with its original group of buildings.

There are viable options for the use of the Residence if RailCorp wish to keep the property and restore it. Alternatively, there

are offers to buy the property, restore it and use it. The substantial rebuild that is now necessary will not reduce its heritage significance, as its position and external appearance are its major significance. We will keep you posted.

The Conservation Committee for the Berry Railway Station Precinct

BERRY COMMUNITY ACTIVITIES CENTRE INC

Since 1990 the BCAC has raised and donated over \$350,000 to organisations and causes in Berry and the Shoalhaven region. The funds are generated by the Arts and Craft Shop and Muir House Gallery in Prince Alfred Street, and the Berry Country Fair/Markets.

The BCAC is a registered Charity, and all activities are subject to strict audit requirements each year. Over the last twelve months it has been our pleasure to make the following donations.

- Gateway Community Garden.... \$600....for irrigation equipment.
- Berry Meals on Wheels....\$3000.
- Shoalhaven Eisteddfod....\$2000.
- Berry Chamber of Commerce.... \$1000....for the Christmas event.
- Shoalhaven Art Society....\$1000.
- Bundanon Indigenous Program....\$2000.
- Shoalhaven District Hospital.... \$7000...for ECG machine.
- Berry Public School Plant Propagation Unit....\$5000.

We have also pledged \$5000 to share with Shoalhaven City Council the cost of a new footpath and curb ramp between Albert and North Street along Alexandria St.



The members and Executive Committee of the BCAC are people from across the Shoalhaven who contribute to the life of our town and region in the spirit of caring, sharing and helping others. Over the 37

years the organisation has existed in Berry it has been a notable contributor to the culture and facilities of the area, like many other organisations in this great little town.

Bundanon CEO Deborah Ely receiving Donation \$2000 from Val McMahon Treasurer and Hazel Hensler Secretary from the B.C.A.C. for Indigenous Program.

www.berryalliance.org.au



Raine & Horne Berry

Congratulation & Sold !!



#1 in Postcode
2535
for number of sales



PRINCIPAL/SALES
Jacqui Crapp
0429 104 011



SALES
Kimberley Clarke
0418 204 518



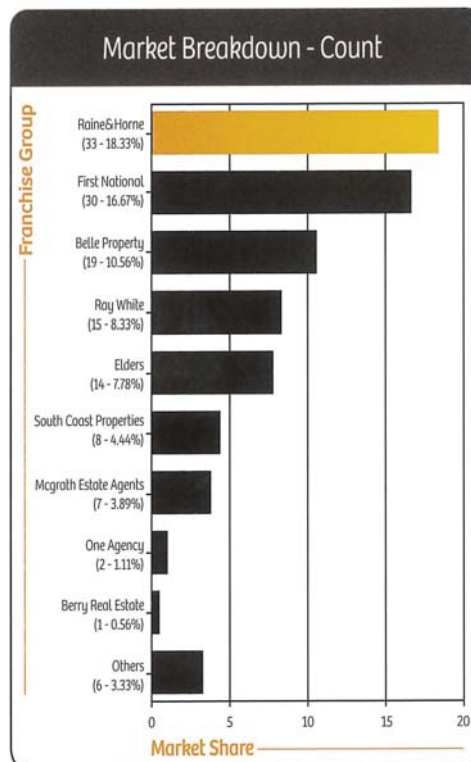
SALES
Alex Cochrane
0412 081 600



PROPERTY MANAGER
Mat Whipp
0416 671 252



PROPERTY MANAGER
Margaret Skelton
0412 856 077



The information provided is from rpdata market score card statistics based on total sales for the last 12 months May 2017 – May 2018 in the 2535 post code.

Spring is just around the corner.....

If you are thinking of presenting your property for sale in spring now is the time to talk to your agent.

Raine & Horne®

02 4464 1300

www.rh.com/berry

Berry Men's Bowling Club

The Annual General Meeting of the Club was held in July and Lindsay McNamara was elected President for his third term, Derek Raymond, Secretary and taking on his 11th year in this position and David Lambert for his first year as Treasurer. The Club has an outstanding record as it is now entering its 107th year of operation. Members of the Club are pleased to welcome new members Brian Vickary and David Shaw. Membership of the Club offers many advantages in addition to playing bowls and at very economical membership fees with Bowling Members at \$45.00 and Social Membership at \$10.00 per year. Membership for 2018/19 is now open and can be arranged by contacting the staff at the Club.

On 11th July the second match of the Triangular Cup for 2018 was played at Gerringong. Berry had a very successful day, and this combined with the results of the first 2018 match puts Berry in first position, Gerringong second and Shoalhaven Heads who will host the next match on 28th August in third place. In view of the close position of the current scores this August match is predicted to be very competitive but played in the usual friendly manner.

Members Russell Tulloch and Terry Hayes will represent Berry and the district in the Zone State Senior Pairs at Bega on 5th August and in the first round will play against a team from Bombala.

Social bowls is played at 1.00 pm of a Wednesday and Saturday with bookings to 0475768249 by 12 noon day of play. Anyone interested in taking on lawn bowling again or trying the game are invited to contact the staff at the Club or telephone the above number. The broadcasting of bowls on SBS will continue until October and is presented of a Sunday. Checking the TV programme guide for actual time is recommended.



BERRY TENNIS CLUB

PO BOX 133, Berry NSW 2535 Email: berrytennis@hotmail.com

If you have not paid your membership for 2018 / 2019, please do so as soon as possible. A big thanks to those renewing and new members who are already on board. Membership forms have been sent to existing members via email. New members should email the club at the address below. Our member dues pay for our affiliation to Tennis NSW and our insurance, so it is vital that you pay your membership as soon as possible. The Berry Tennis Club Championships were held on Saturday and Sunday 24 & 25 March 2018 at the Berry Tennis Club. Congratulations to the following members who were successful:

Men's Doubles -

Rick Lascelles & Peiter Tencate

Mixed Doubles -

Rick Lascelles & Helen Guinery

Men's Singles - Rick Lascelles

Women's Singles - Helen Guinery

Unfortunately we were not able to have a Women's Doubles competition this year.

Our "summer" weeknight competitions finished up in June. Our "winter" weeknight competitions will have started in the last few days. It is not too late to contact us to get your name down as a sub for one of the weeknight comps. Our very successful weekday social tennis continues to be held on Tuesday and Friday mornings.

Following on from our recent "refurbishment" of Courts 3 and 4, Berry Tennis Club hosted a part of Tennis NSW's Junior Development Series in June. We are scheduled to host a further event in November 2018.

The courts are available for hire by Club Members and the general public. Details are on the Club sign at the tennis courts on North Street.

For enquiries about membership, comps, social tennis or events you can always email: berrytennis@hotmail.com.

The Berry Camera Club are a Group of Local Photographers, that includes Hobbyists, Enthusiasts and Professionals.

We all share the passion for being behind the lens, sharing our knowledge and improving our photography skills.

We meet monthly, and have regular outdoor photoshoots.

Our club is growing and we invite anyone with an interest in Photography to join us.

Meetings are held monthly:

When: 2nd Wednesday of each month, 6:00pm

Where: Berry Bowling Club

For more information please visit our website or Facebook page:

Web: <http://www.berrycameraclub.com/membershipcontact.html>

Facebook: <https://www.facebook.com/groups/BerryCameraClub/>



BERRY CWA



The Country Women's Association of NSW has always been a strong advocate for issues that affect all women and particularly country women. At our yearly State Conferences, resolutions are passed by the membership that will become the policy of the Association and form the basis of lobbying of both State and Federal Governments.

Looking back over more than 50 years some of these resolutions have showed great foresight:

In 1960 - Enforce the law that all cyclists must wear a helmet.

1960 - Railways to instal a STOP sign at level crossings.

1962 - Urge car manufacturers to incorporate standard equipment for car safety belts.

1965 - Make it compulsory for motor cyclists to wear crash helmets.

1968 - That pedestrian crossings be put in front of schools.

AUGUST 2018

However some things never change - CWA advocated in

1960 - That there be a uniform price for petrol throughout the State.

1960 - Historic buildings in country towns be preserved and maintained and not demolished.

1961 - That the strongest disapproval be expressed of manufacturers reducing the quantity of packaged goods and not the price of same.

1961 - That sufficient incentive be given for the return of glass bottles. They also promoted the expertise of women.

In 1963 - That a woman should be included on the NSW Parole Board.

1963 - That at least two qualified women sit on the Aboriginal Welfare Board.

1964 - Called for at least two women to sit on the Wool Promotions Board, and in

1966 - That a jury should consist of at least 25% women when dealing with sex

offenders. (were men being too lenient?)

However, some resolutions were truly a sign of the times.

In 1962 - That the sale of baby crocodiles in Department stores and Pet Stores be banned, and in

1963 - Prohibit the screening of midnight horror shows as a deterrent to teenage delinquency. (were they concerned our teenagers were going to turn into werewolves or zombies?)

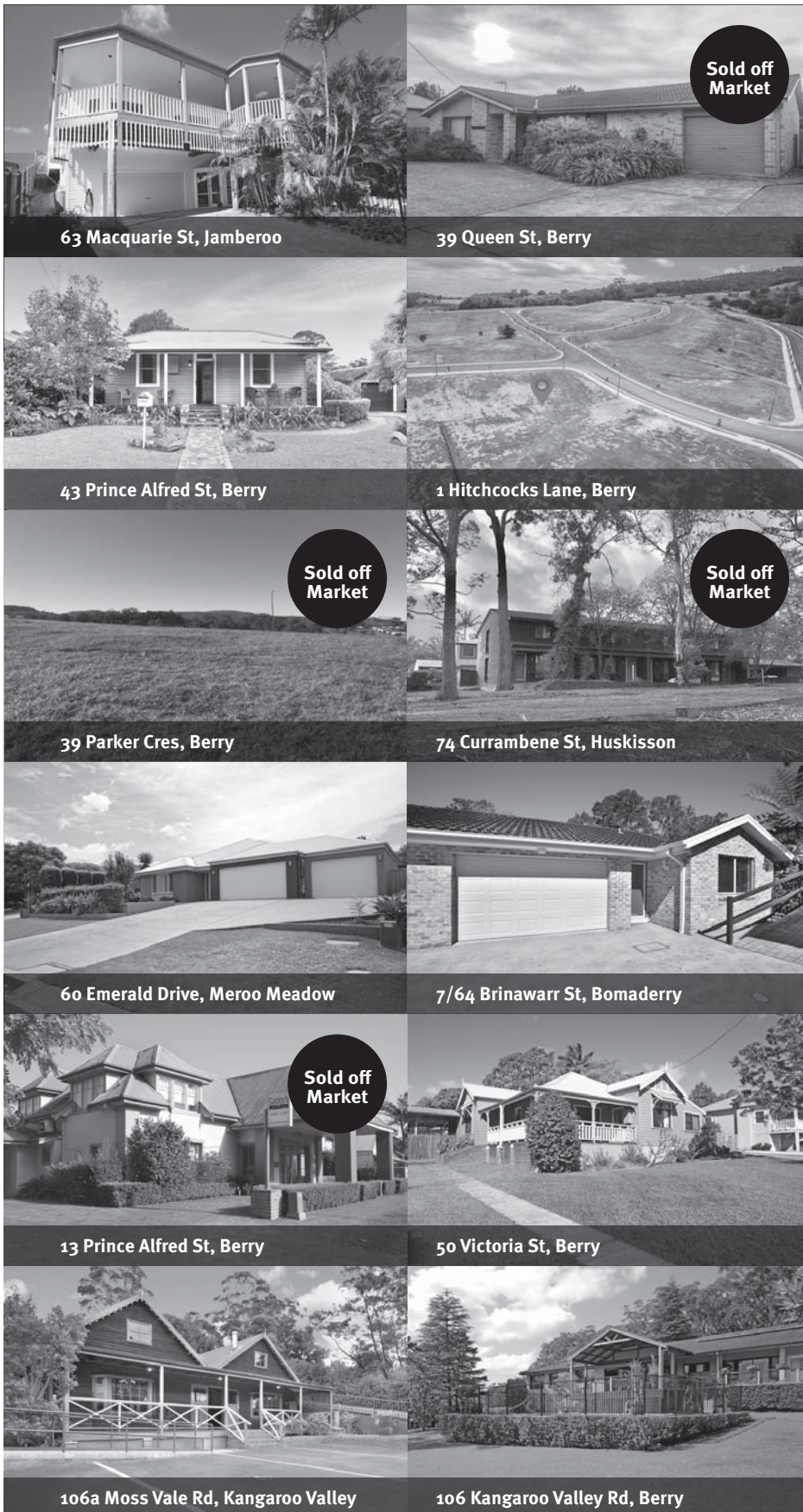
So if you have any issues where you need a strong and supportive advocate - why not join the CWA.

Our next meeting is at 12.30pm on Friday 10th August at our rooms - 79 Victoria Street, Berry followed by afternoon tea.

Sandra Berner - Publicity Officer

www.berryalliance.org.au

The Town Crier - Page 25



Took the stress out of selling!

Tim's knowledge of market prices put us at ease straight away and we were very comfortable with how he managed the whole selling procedure. He presented our house beautifully both in description and photographs and held open inspections every week, followed by quality feedback along the way.

His professionalism gave us complete confidence and he was able to negotiate a fair price to secure the sale. I would have no hesitation in asking Tim to manage any future property sales I may have.

Jayne - 7 Clover Court, Cambewarra

Excellent Agent

From the very first call Nicholas was easy to talk to and took the time to answer all of my questions over the phone. He was very knowledgeable about the property and the area. He didn't harass us over the phone after the visit and waited for us to call him with questions etc.

Nicholas was very easy to liaise with and has been extremely helpful to the point of meeting trades at the property so they can quote the work we wanted done before we have officially settled.

Amber - 1089a Kangaroo Valley Rd, Bellawongarah



Nicholas Lyell



Tim McGoldrick

Elders
Berry

Get a spring in your step,
before you miss the market.

Elders Real Estate Berry | 121 Queen St, Berry NSW 2535 | P +61 2 4464 1600 | F +61 2 4464 1923 | www.eldersberry.com

Before we were Berry, we were Broughton Creek before that, Boongaree

There has been a community at Berry for a very long time. Our relationship with trees has changed along with that community.

In the 1820s, a semi or even permanent Aboriginal encampment existed on a 'meadow' at the junction of Broughton Mill and Broughton Creeks. Research by Keith Campbell reveals the encampment was called 'Boon-ga-ree'. This makes it Berry's original human settlement.

That community was sustained by the natural resources of the meadow, its creeks and surrounding rainforest. A remnant of that rainforest survives at the Berry Hospital and gives an impression of the region's once extensive 'brush' forests. Boongaree was the birthplace of Broughton (c.1798 – c.1850), a local Indigenous man whose Aboriginal name was Toodwick'.

In 1822 Toodwick started work for Alexander Berry at 'Cullunghutti'. The two established a strong friendship, with Berry later describing Toodwick as 'my oldest surviving Black friend'. Toodwick was respected by many, and his interactions between the white and Indigenous cultures served a positive role.

In 1825, seven free sawyers, employed by Berry, made camp at Boongaree and

*A sketch of
'Broten' by
Jaques Arago
1819
(State Library
of NSW)*



commenced sawing red cedar. Following an economy of profit, a village grew up by the meadow which was an ideal location for preparing and loading timber onto steamers. The settlement was called Broughton creek. Farm tenants followed sawyers, and trees were increasingly felled for agriculture and pasture. With the loss of their lands, Aboriginal people moved to less productive ground and to fringe camps. They would return to Boongaree as seasonal crop pickers, camping along Broughton Mill Creek.

The community changed the name of their town to Berry in 1889.

The following century saw a change in attitude and trees were increasingly planted in the name of conservation and land management.

WORKING BEES FOR SEPTEMBER 2018

Alexandra Street Parkcare: 9-11 am Friday 17th Gail Paton 4448 7915.

Bong Bong Road: 9-11 am Sunday 12th Julia Woinarski 4464 2084.

Broughton Vale: 9-11 pm Sunday 4th Kelvin Officer 0427 255417.

Bundewallah Bushcare: 2-4 pm Sunday 26th John Clark 4464 3911.

Camp Quality: 9-11am Sunday 19th Hugh Sheil, hugh.sheil@realtimecom.com.au or Jeanne Highland 4464 1271.

Moeyan Hill: 2-4 pm Saturday 18 Bill Pigott 4464 3241 or wpiggott@bigpond.net.au

Mount Coolangatta: Nola Barker. Mobile 0409 446 418, nolajbarker@live.com.au. Time to be advised. Meet at end of Roxbrough Rd, Far Meadow.

Mark Radium Parkcare: 9-11am Friday 24th Sue Selden, sueselden@optusnet.com.au

Princess St. Parkcare: 9-11am Monday 27th Terry Oades 4464.3651.

Tindalls Lane / Boundary Road Link: 2-4 pm Sunday 12th Jim Jefferis 4464 2988.

Plant identification service: Please contact Harvey Blue 4464 1880.

You can be a part of this change by planting trees in celebration of National Tree Day. Help regenerate the Berry Wildlife corridor at 49 Campbell's Run, Sunday 26th August 10:00 am – 1:00 pm.

VISIT OUR PAGES AT:

www.landcare.nsw.gov.au/groups/berry-landcare for more on Berry Landcare and late changes to working bee details.

Information can also be found on Facebook.



The Big Swing at the Gerringong Town Hall - a Swinging success !

Guests began their evening with the beautiful singing of Katandra Women's A Cappella Choir and then danced the rest of the evening away to the fabulous music of the '16 piece' Sydney based, Village Big Band!

The dance floor was full and included various dance clubs around the Shoalhaven with many guests adding to the fun by dressing in Swing era costume.

The supper of delicious platters and sweet treats was catered for by the CMRI. Rosalie Cronin, President of the CMRI, also gave an address updating the audience on the latest medical research being undertaken by the Institute.

Altogether, the combined Concert and Supper Dance raised over \$3,000 in donations for the Children's Medical Research Institute!

The final song of the evening was a rousing version of "I Got The Music In Me" sung by Katandra and the Village Big Band to a packed dance floor.

Congratulations to the wonderful women of Katandra Berry and Katandra Kiama who made it all happen.... BRAVO!

Sponsored by the
Berry Alliance



DAVID BERRY



HOSPITAL AUXILIARY

Firstly, a very big thank you to the Shoalhaven Heads Dancers Group for the wonderful dinner and dance function they had in aid of the David Berry Hospital Auxiliary. 102 people came along and had a marvellous time. Dinner was great and all the dancers were enjoying themselves, including the ones who just tapped their toes.

Thank you to all the people who donated the 7 raffles prizes, they were all great prizes and I am sorry I cannot name the people who

supported the night. Our winner of the first prize, of a 3 days holiday a Merimbula, was Mrs. Edna Watt. A very happy lady who now has a lot of friends.

Our next function will be catering at the Camellia Show on 4th & 5th of August. We will be doing our usual catering of sandwiches, slices, tea and coffee for morning and afternoon tea and our wonderful soups for lunch. Do come along to see the marvellous Camellias and our soup lunches.

Our Annual General meeting will be held on Monday 13th August commencing at 1.30 pm at the hospital - all are welcome.

As you can see, we are a busy group. Following all the above we hope to have our Fathers' Day Street Stall on 1st September, in our usual place. Unfortunately, we have not yet received our official notice from Council yet but are hoping it will be received soon. We would appreciate any help, thank you.

SOMETHING TO THINK ABOUT

We can do no great things - only small things with great love.

Pamela Coles - Publicity Officer



140 Queen St
Berry Ph:4464 2995
www.berrybowling.com.au
f : Berry Bowling Club

The Rat Bags

Come Fly With Us

A Tribute to Frank Sinatra & Dean Martin

BERRY BOWLING CLUB

Sat Sep 8 - Tickets \$30

Doors open 7pm - SHOWTIME 8pm

www.lennvis.com/ratbags

The Rat Bags will croon you with timeless classics such as...

Ain't that a kick in the head
Fly me to the moon
Little ole wine drinker me
Love and marriage
Come fly with me
King of the road
That's Amore
My way
When your smiling
That's life
The lady is a tramp
Sway
Send me the pillow
Volare
Mac the knife
I get a kick out of you
New York, New York
Memories are made of this

And so many amore. Dancing is welcomed. Tickets are limited. Come fly with us!

BOOK YOUR OWN BAREFOOT BOWLS PARTY

BOOK YOUR WORK BAREFOOT BOWLS PARTY

- Cost \$10 per person which includes bowls hire coaching and set up
- Both BBQ's can be hired for self-catering



See the bar to make
a reservation or
Ph:4464 2995



raffles!

Every Thursday, Friday, Saturday & Sunday

Drawn Thursday 7.15 Fri, Sat, Sun at 7.30

Free Trivia on Sunday

See Bar Staff For Details



*Consider Berry Bowling Club
for your next Special Event*



CHINESE

RESTAURANT

Lunch & Dinner - Wednesday to Sunday

Ph 4464 2388

TRADES & SERVICES DIRECTORY

Canine Cardio

Dog Walking & Animal Home Care

Dog Walking | Pet Minding | Doggy Daycare | Overnight Stays

Annette Brooker

0418 477 438

info@caninecardio-homocare.com.au
www.caninecardio-homocare.com.au



Television Antennas SHOALHAVEN ANTENNAS

Servicing Berry and surrounding areas.

- Digital Upgrades
- New Installs
- TV Tuning
- Repair existing systems
- Add Phone/TV Outlets



Ph: 0410 526 672 Paul 0424 243 005
Fax: 02 4422 6672

**WINDOW
& GUTTER
CLEANING
HOUSE
WASHING**

**CALL JAMIE
FOR FREE
QUOTE**

0413 582 948



PROMPT, RELIABLE SERVICE

SPACE AVAILABLE

CONTACT THE EDITOR

0428 037 572

towncrier@berryalliance.org.au

GETTIN' IT DONE! TREE SERVICES

TREE REMOVALS • TREE PRUNING
BLOCK CLEARING • WHOLESALE MULCH
STUMP GRINDING • CHERRY PICKER HIRE

JASON 0432 281 063
WWW.GIDTREESERVICES.COM.AU



Berry
Chiropractic

~ Specialising in gentle,
low force techniques ~

SAFE, EFFECTIVE TREATMENT FOR:

- All ages; from babies through to the elderly.
- Headaches/migraines
- Back/neck pain
- Postural problems
- Whiplash
- Scoliosis

EFTPOS available
HICAPS now available

57 Queen Street • Phone: 4464 3414

TANNED HIDES, BERRY NSW

TANNED HIDES

Professionally Tanned Hides available
- your hide or choose from our range

PHONE 0409 444 081

All enquiries welcome
www.tannedhides.com.au
e: sales@tannedhides.com.au

Ian's Interior Linings



★ All plasterboard &
fibrous plastering

★ Commercial & Domestic

M: 0418 220 751

E: willey63@bigpond.com.au

AIS CERTIFIERS

FAST TRACK
BUILDING APPROVALS

SWIMMING POOL
COMPLIANCE CERTIFICATES

TONY LEWIS

0417 372 728 • 4421 0004
info@accreditedinspectionsservices.com.au

THE BOUTIQUE GYM

Personal Trainer *Jen Miller*

117 North Street,
Berry NSW 2535

0413 648 943

jenmiller65@hotmail.com



LOCAL • COUNTRY • INTERSTATE

Experience a New Level of Professionalism

Phone 04 2864 3557 or 4464 3557

Four Legged Friends PET FEEDING SERVICE

For Horses, Dogs, Cats, Birds
& all other domestic pets

Megan White
dip in animal care
0407 407 328

whitewolf99@bigpond.com

Established: 1995

• FEEDING • EXERCISING • RUGGING
• GARDEN • MAIL • GARBAGE

www.fourleggedfriends.com.au



KEITH'S MOBILE CAR WASH

I'll wash and wax while you relax! Give me a call and I'll come to you...
(Berry and surrounding areas) ...because details count!

Call: 0410 44 77 88



CAR WASH EXTERIOR, WINDOWS & WHEELS
Standard from \$60 | SUV from \$70 | 4WD from \$80
INTERIOR CLEAN FROM \$10
OTHER SERVICES UPON REQUEST

KEITH FAASSEN Email: keith.faassen8687@gmail.com ABN 87226451435

Roof & Building Repairs

Roof Leaks

Leak Detection

Moisture Problems

0415 997 977

Info@benchmarkbuild.com.au

gerringong physiotherapy
nowra central physiotherapy
shell cove physiotherapy

4234 4666

www.gerringongphysio.com

TRADES & SERVICES DIRECTORY

Vaughn's Lawn & Garden Service



- Local knowledge
- Professional service
- Fully insured

0408 863 776

www.vaughnsgardening.com.au

G.M. Ellison & Co. lawyers • conveyancers

Graham Ellison LL.B.

- Real Estate & Business Conveyancing
- Wills, Probate and Personal Arrangements

5 HOST PLACE BERRY

Ph: 4464 3814 / 0408 444 808

graham@gmellisonlawyers.com.au

TERMITES!

- Pre purchase termite inspections and reports
- Termite barriers new & existing buildings, council approved
- Thermal imaging and microwave inspection tools
- Termite Baiting Systems

FREE QUOTES Call

TERMITE SOLUTIONS-

4448 5444

termite experts

Fully Licensed, Accredited & Insured
Family Business with over 20 years experience

BERRY MAINTENANCE PLUMBING

ALL PLUMBING SERVICES
Gutters Hot Water Toilet Repairs Leaks

Paul Bramley Licence L5826

Mobile: 0438 641 046

Office: 02 4464 1312

MY CERTIFIER

BUILDING CERTIFICATION

Construction Certificates, Complying Development Certificates, PCA Services, Pool Compliance, Basix Certificates, DA Assistance & Building Consultation

Che Leonard BPB1812

0417 593 496

Email: che@mycertifier.com.au

www.mycertifier.com.au

PROPERTY MAINTENANCE HOME HANDYMAN

- Repairs and installation of doors/windows/gates and fencing
- Small extensions - decks/pergolas
- Tipper Hire
- Clean ups - rubbish removal
- 40 years' experience
- Fully licensed

Michael Barrett 0408 217 637

**Support
locally
owned
businesses.**

HERE IS HOW TO GET THE BEST KITCHEN, VANITY, FURNITURE, TIMBER WINDOWS, DOORS, FLYSCREENS AND JOINERY

Rybrook Joinery

CALL SCOTT OR MICHAEL

4422 4600

MICHAEL HILL

PAINTER & DECORATOR

Quality Work Guaranteed

Domestic Commercial Industrial

ABN 95 969 204 488 Lic No 121389C

0402474569

- Specialising In
- New/Old work
 - Feature Walls
 - Roofs
 - Texture Coating
 - Heritage

Arborist
Complete Tree Removal & Care
Reliable Professional Service
Mulch Sales
Stump Grinding
Fully Insured

Dave Kelly

0423 903 946

All aspects of professional tree care.



- Domestic and Commercial Cleaning
- Regular and Spring Cleaning
- Presentation Cleaning
- Rental Exit Cleaning
- Window Cleaning

Call Rhona for a free quote: **0417 652 892**

Over 20 years' Experience

ELECTRICAL CONTRACTOR

EEPS
Lic. No. 133674C

DOMESTIC & COMMERCIAL

Solar Power Installation
Home Automation Systems
Security Lighting
Pools & Spas
Hot Water Systems
Oven & Stove Repairs
Safety Switches
Smoke Detectors

Contact peter today!

0412 594 907 | 4464 1993

ENDEAVOUR ENERGY AUTHORISED LEVEL 2 SERVICE PROVIDER



HANDYMAN SOUTH COAST

TRADE QUALIFIED

Carpentry, plastering, painting, pressure cleaning, all repairs & renovations.

**PROPERTY MAINTENANCE
SPECIALIST**

Fast, fixed, fabulous!

DANNY FAGAN 0407 118 311

Gerringong Painting Service

Lic: 186465C

- New & Repaints
- Interior & Exterior
- Small Jobs Welcome
- 30 Years Trades Experience



GREG DENT 0438 637 141



MISS SPARKLES

SHOALHAVEN

External House Cleaning

HOUSES FROM \$148

- Environmentally Friendly
- House/Driveway Packages
- Removal of Cobwebs
- Patios and Driveways
- Mildew Treatment
- Windows/Screens included
- Commercial work
- Seniors Discount

Phone Dennis for a free quote:
0407 642 256

Now Offering: Internal Window Cleaning &
Licensed/Insured Electrical Work (Lic No. 209514C)

TRADES & SERVICES DIRECTORY

CKB CIVIL

All Earthworks
Landscaping
Driveways
Rural Roads



Charlie 0418 429 740
charlie@ckbcivil.com.au

Lic 244729c

CANOPY CLIMB

CLIMBING
ENTHUSIAST

CANOPY CLIMB ARBORIST

» All aspects of tree work » 20 years' Experience » Fully Insured

0400 777 605
canopyclimbing@gmail.com



SCHOON PLUMBING

Plumbing-Drainage-Gasfitting
Roofing-Guttering
schoonplumbing@hotmail.com

Mini Excavator Hire
New Homes-Renovations
Tindalls Lane Broughton NSW 2535

Call Today! 0419624011

Computer Troubleshooters

TECHNOLOGY SOLVED

- Residential or Business we come to you.
- Hardware and software repairs and sales.
- Networking solutions.
- Over 20 years' experience.

0422 227 456
www.ctsnowra.com.au

LOCAL SERVICE – GLOBAL STRENGTH

Glynn's Carpentry

YOUR HOME IS IN GOOD HANDS

Maintenance, Repair & Renovation Specialist

"I can help with those odd little jobs that never seem to get fixed or a bigger project like a new kitchen or bathroom"

Lic # 218008C

For a friendly free quote - Glynn 0423 384 072

Support
locally
owned
businesses.

Curran Plumbing

Local Plumber
Fast & Reliable 24/7

1300 792 082

www.curranplumbing.com.au

10%
OFF
IF YOU
MENTION
THIS AD



Southern Tree Service

- Qualified Arborist
- Qualified Horticulturist
- Tree care and maintenance
- Expert trimming and tree removal in confined areas
- Chipper • Mulch
- Advice on replacements
- Stump Grinding
- Fully Insured

Paul Gillen

Ph/Fax 4464 2822 • Mobile 0407 405 968

JASON COX

LICENSED REAL ESTATE AGENT

0429 949 900
jason.cox@oneagency.com.au
Shop 6, 90-92 Queen Street
Berry NSW 2535
02 4407 5000
Shop 2, 160 Moss Vale Road
Kangaroo Valley NSW 2577
02 4465 1996
www.oneagency.com.au

ONE AGENCY
COUNTRY LIVING

WALLED GARDENS

Kangaroo Valley Berry Bowral Wildes Meadow

garden maintenance
garden design
installation

Joshua Wall
02 8999 1408
04 2357 8716

hello@walledgardens.com.au

www.walledgardens.com.au



Dwell
SOUTH COAST
decorate • colour • style

Mindful colour specifications for inside + out

Home styling + decorating advice

Selection of fixtures, fittings + finishes

Sourcing furniture + artwork

Chat to Tonya 0447 186 105

www.dwellsouthcoast.com.au



Rural bitumen services pty ltd

Specializing in Private Road Construction
& Bitumen Seal

- Driveways
- Carparks
- Decorative driveways
- Fully Insured

Contact Office (02) 4464 1555

James 0416 269 744

SPACE
AVAILABLE

CONTACT THE EDITOR

0428 037 572

towncrier@berryalliance.org.au

Barrys Mowing & Maintenance Service



RESIDENTIAL & SMALL ACRES | BERRY & SURROUNDS

Fully Insured | Call for a Free Quote

0409 929 534

South Coast Gutter Wiz

GUTTERS BLOCKED?

Our safe, affordable & mess-free vacuum gutter cleaning service is now available in your area! Keep your home free from debris & bushfire safe. Pressure Cleaning service also available.

Call for a free quote today....

Your vacuum gutter cleaning expert

Phone Garry 0401 492 220



ESTABLISHED 1863

BERRY HOTEL

SAVE THE DATE

Oktoberfest

14th -16th September

2018

Celebrate with Tapping of the Kegs!

Friday 14th September from 7.30pm

in the front bar

German beer and food on offer!



LIVE MUSIC LINEUP

WOODY

Saturday
4th August
8.00pm

every FRIDAY night tickets ON SALE from 5.30pm

CASH JACKPOT RAFFLE



Jackpots
\$200
every week!

Starting at \$2,000!!!

Supporting
Berry Shoalhaven Heads Cricket
and Rugby League Clubs
LTPM/18/03318

RESTAURANT NEWS

Our kitchen is getting some much needed TLC during August!

We will still be running a pop-up kitchen during this period:

- ✿ with a reduced menu
- ✿ but with some great dishes to try.

Paella in the Pub!

Fri 17th and Sat 18th August
in the Courtyard!

BOOKINGS
ESSENTIAL



120 Queen Street, BERRY www.berryhotel.com.au
p. 02 4464 2294 f. 02 4464 2142 e. info@berryhotel.com.au



facebook.com/TheBerryHotel



[@theberryhotel](https://twitter.com/theberryhotel)



Smartphone App

TAB

Restaurants . Functions . Accommodation . Live Music

RESPONSIBLE SERVICE OF ALCOHOL AND GAMBLING

OFF-STREET PARKING FOR PATRONS AT THE REAR OF THE HOTEL

