



Berry Small Farm Field Days On Again

The 6th annual Berry Small Farm Field Days will be held at the Berry Showground, on Friday and Saturday, 8th and 9th September 2017.

The gardening section set up like a garden fair will again be a feature where you can wander through and view a variety of stalls offering plants, tools, wheelbarrows, garden art and more. Guest speakers, including Jason Hodges from Better Homes and Gardens, will be on hand throughout the day to speak on a variety of garden related topics, as will Village Vets Anthony Bennett and James Carroll giving handy advice on caring for small animals.

Paul Andersen, member of the Rotary Club of Berry and Exhibit Organiser, said their aim

was always to improve on the year before by introducing new exhibits and ideas. *"This year we have re-arranged the setout of the whole showground in order to fit more exhibits in, plus enlarged the Millpaca Livestock Pavilion. We also have some fun things for the children to do, apart from seeing all of the farm animals. This includes a competition to find a number of Furry Friends which are placed around the arena,"* Paul said.

There are always lots for children to see, with the animal nursery, all the farm animals and chooks on display being a big hit. A large framed marquee will again house a wide range of livestock exhibits together with associated products. Last year the small Southern Cross cattle breed made its public debut at the Field Days.

And as normal, there will be wide range of exhibitors from all over Australia displaying the latest farming equipment, machinery and supplies as well as everything you could want for your farm – plants, trees, mowers, garden equipment, water tanks, solar solutions. Plus, information seminars, demonstrations and plenty of good old-fashioned country fun.

The Berry Small Farm Field Days is one of the major fundraisers for the Rotary Club of Berry with proceeds going toward local and international projects. The Club's current major community project is to facilitate the development of a nature play parkland along North Street Berry.



BERRY SMALL FARM FIELD DAYS

BERRY SHOWGROUND
FRIDAY 8 SEPT 8.30AM TO 4PM
SATURDAY 9 SEPT 8.30AM TO 3PM

ENTRY: ADULTS \$10, CHILDREN UNDER 15 YEARS FREE
PARKING ON SITE: \$2 PER VEHICLE (ENTRY FROM ALEXANDRA ST GATE)

BERRY ALLIANCE INFORMATION



The Town Crier is produced by the Berry Alliance, Inc.

The purpose of this publication is to communicate to the people of Berry about community activities and to generate a small income for the Berry Alliance to cover administrative costs and donations.

MEMBERSHIP

Membership of the Berry Alliance costs \$10 pa. It aims to share information amongst community groups and individuals, and to ensure that Berry continues to be a community we are proud of.

Membership is open to Berry community groups and individuals.

To join the Berry Alliance, write to PO Box 202, Berry NSW 2535

ALL BERRY ALLIANCE ENQUIRIES

Secretary: 0449 569 059

Email: info@berryalliance.org.au

Post Office Box 202, Berry NSW 2535

THE BERRY ALLIANCE COMMITTEE

President: Holly Landgren

Secretary/Treasurer: Rick Gainford

Secretary: Nancy Davies

Committee Members:

Adrian Bishop

Hania Norman

Kim Gould

Marty Gould

Editor's Note



The closing date for our October issue will be Wednesday 13 September at 5pm. Please submit prior to this date if it is your first submission. Material can be submitted via e-mail to: towncrier@berryalliance.org.au. Phone 0428 037 572. Town Criers can be downloaded for free from www.berryalliance.org.au or our Facebook Page: Berry Town Crier.

Nancy Davies - Berry Town Crier

TOWN CRIER EDITORIAL BOARD

Nancy Davies

Rick Gainford

Holly Landgren

Adrian Bishop

Contributors are those from the Berry community who have news or views relating to residents of the area. The opinions expressed in the Town Crier are not necessarily those of the Berry Alliance or the Editor. The Town Crier is published every month, with a circulation of 2400.

PRINTED BY **Berry Printers**
CONCORDE WAY BOMADERRY PH: 4422 3774
PRINTED ON RECYCLED PAPER



The Berry Forum

www.berryforum.org.au

Forum Meeting on 17 August

57 people attended the meeting, which had been postponed by a week. Unfortunately, this resulted in a clash with an ADFAS presentation and many apologies were received from ADFAS members.

Berry Bypass Update

(Ryan Whiddon RMS)

- Unfortunately, Shannon Chisholm of Fulton Hogan was unable to attend as he has moved to assist with another project needing his skills in Sydney. Ryan Whiddon from RMS stood in for Shannon and gave an informative presentation explaining changes to traffic flows around Berry that will occur over coming weeks.
- Over the next few weeks work will focus on the new roundabout at the junction of Woodhill Mountain Road and Queen Street, and the link road between Kangaroo Valley Road and Victoria Street. Work will then start on the new roundabout at the junction of Kangaroo Valley Road and Queen Street. Information on traffic diversions is on the Forum website.
- A question was asked about the possibility of signage for travellers who miss the turn-off for Berry travelling north, to let them know that they can turn back at Tindalls Lane. RMS will investigate.
- Ryan introduced Michael Phillips-Ryder, who is Fulton Hogan's Project Director. Michael thanked the Berry community for its patience and understanding since the project commenced.

Berry District Park (James Robinson)

Council has officially adopted the endorsed Master Plan, which is now on display on

Council's website. Cllr. John Wells has secured funding for detailed design work, which includes landscape design, land survey, feasibility analysis and delivery plan. The centerpiece of the Park will be the nature playground proposed by the Rotary Club of Berry. Discussions with North St residents have identified their main points of concern as being the final form of the carpark and the siting of the toilet facilities.

Town Centre (Bill Rice)

The Town Centre Review Group is working on the Strategic Plan focus area - 'Develop an inviting Town Centre that highlights Berry's atmosphere and appeal'. Bill described the areas that the Review Group is discussing and noted that a settling-in period after completion of Bypass works was essential before any suggestions for significant changes could be considered. Details of the TCRG coverage can be found on the Forum website.

Public Amenities (Geoff Armstrong)

Potential sites for additional public toilets were discussed. Council is being consulted to assess the 'buildability' of each site, prior to information being distributed to the community. A community petition containing 325 signatures has been received opposing the siting of a toilet facility adjacent to Alexandra St Park.

Berry Community Library

(Shona Gibson)

The 'pop-up' library will be open Tuesdays & Fridays 10am - 1pm and Wednesdays 1pm - 4pm.

Next Forum Meeting on 12 October will include the Forum AGM.

SEEKING VOLUNTEERS for Berry Meals on Wheels

Thank you to all Volunteers for making it so smooth for Berry Meals on Wheels as we moved into 2 runs a day. Our clients are getting their meals at a more sensible time and are very appreciative.

But because of this we are looking for a few **NEW VOLUNTEERS** to help deliver these meals. It takes approximately 1 - 1.5 hours a run.

Can you help us; mainly on a Friday or a Wednesday? We pick up meals at 12.15pm from Berry Masonic Village and deliver them to our clients.

Applicants must complete a police check.



IF you can HELP would you ring our President,
Pat Stone on 4464 1194



Plastic pollution and recycling

A study published in Science Advances journal in July this year estimates that since the 1950s, 8.3 billion tonnes of plastic has been produced, of which approximately 79% has ended up in landfill or as environmental pollution, with 12% incinerated and only 9% recycled. On those figures, that's about a tonne of plastic per person alive today.

Sometimes it feels like our efforts to live more sustainably have little or no impact. However, there is some good news amidst the more sobering stories. Not for profit groups are working to educate and empower communities, and companies are introducing products that are better for the planet, and for us. This month we look at some of these.

TAKE 3

The not-for-profit Sydney based organization Take 3 was established in 2009, using the simple premise of encouraging people to get into the habit of picking up three pieces of rubbish; at the beach, waterway, or generally when outdoors. Keeping plastic out of the marine environment is vital, and while the Clean Up Australia Day event held in March raises public awareness about the problem, it is a year-round issue that can't be left to a once a year effort. You don't even need a plastic bag to pick up three pieces of rubbish. However, if you're really dedicated and want to collect more, a fabric bag specifically for rubbish collection can be washed when needed.

PLASTIC FREE JULY

Did you participate this year? This is a great initiative, and if you found it too hard to get involved think about having your own challenge. If a month seems daunting, try breaking it down to a week; and focus on the four biggest single-use items; bags, cling wrap, straws and take away coffee cups.

The era of single use plastic bags is coming to an end. The two largest supermarkets have bowed to public pressure and in July announced a phasing out of single use plastic bags over the next twelve months. The marketing of biodegradable bags is not the solution either; these bags break down into micro plastics that enter the food chain of marine animals, and potentially from there, to humans.



CUTTING DOWN ON PLASTIC

Support companies that produce products as an alternative to plastic. To learn more, check their websites or online shops. Some examples:

- Buzzy Bee Wraps and Honeybee Wraps, both Australian companies, make bees wax impregnated reusable cloths for wrapping sandwiches.
- Shop Naturally sells a wide range of sustainable products, from bam-boo cutlery for your next picnic to cleaning products.
- The Source Bulk Foods has thirteen stores statewide including nine in Sydney, with the nearest to us in Wollongong. Here you can buy grains, nuts, dried fruit, herbs and spices, flour etc in bulk, and by bringing your own packaging save on plastic packaging. Similar bulk food retail outlets include Scoop Wholefoods (Bondi Beach) and Naked Foods Organic (Bondi Junction). Honest to Good-ness is another Australian owned company that uses minimal plastic packaging.

CONTAINER RECYCLING PROGRAM

We are still waiting in NSW for a container refund program, something that has been in effect in South Australia since 1977. When the Northern Territory introduced a similar scheme in 2012 Coca Cola Amatil, Schwepps Australia and Lion Pty Ltd challenged the legislation in the High Court. While there has been discussion by our state government politicians about introducing a scheme here, it remains bogged down in negotiation with large players in the beverage industry.

The introduction of Boomerang Bags in town has been a positive sign that communities that are engaged and proactive can effect changes. Putting your own small changes in place, whether that be writing to politicians or companies to demand more sustainable policies and practices, or simply taking your lunch from home to avoid buying a packaged meal, have a positive cumulative effect for our community and environment.

Berry Museum

135 Queen Street
BERRY 2535



OPENING HOURS

Saturdays

11.00am - 2.00pm

Sundays, School Holidays
and Public Holidays

11.00am - 3.00pm

FREE ENTRY

www.berryhistory.org.au

NEWS FROM BERRY MUSEUM

Berry Museum is run by the Berry & District Historical Society

Public Lecture by Professor Donald Napper

Come and hear a talk about William Wilkinson Wardell, the Pope's Architect in Australia.

William Wilkinson Wardell designed a significant number of Roman Catholic churches, first in England, then in Melbourne and Sydney. Especially notable are Wardell's two Catholic cathedrals: St Patrick's in Melbourne and St Mary's in Sydney, very different cathedrals by the same architect. In Australia, Wardell also designed the imposing Victorian Government House and St John's College at Sydney University. Also scattered around NSW, Victoria and South Australia were some twelve ES&A Bank buildings, including one in Berry, which now houses the Berry Museum.

The lecture will be delivered by Professor Donald Napper, Emeritus Professor and a past Pro-Vice-Chancellor of the College of Science and Technology at the University of Sydney.

Following his retirement, Napper offered to be a tour guide for the National Trust. It was while he was a tour guide at Macquarie Lighthouse, that he became interested in Australian colonial architecture.

WHEN: 19th September at 2.00pm WHERE: The Activities Hall, Albany Lane, Berry

(Situated in the Masonic Village, access to the Activities Hall is via a path near the bus stop in Albany Lane.)

Green Plaques Project

The Green Plaques Project was launched on the 29th June at the Museum. Vice President Nancy Bevan opened the occasion and welcomed the many guests.

Shoalhaven City Mayor, Cr Amanda Findley officially unveiled the project and congratulated the Berry and District Historical Society on their work. The Mayor spoke of her interest in local Aboriginal history and heritage.

Royal Australian Historical Society Councillor, Bruce Baskerville, gave an interesting talk on commemorative plaques

Also present were representatives of Shoalhaven Council Tourism and the Berry Community Arts Centre, both sponsors of the Project.

Our Latest Exhibition – Berry Garden Club

Berry Garden Club is celebrating 40 years since it first started. Come and visit the Museum to see their display.

135 Queen Street, Berry (02) 4464 3097 www.berryhistory.org.au berrymuseum@bigpond.com

Opening hours: Saturday 11am to 2pm – Sunday 11am to 3.00pm

Monday to Friday in School Holidays from 11am to 2.00pm

The Museum is also open by arrangement outside usual opening hours for tours of the Museum.

Have you considered becoming a member of the Berry and District Historical Society? As a member you will be able to help run the Museum, attend lectures about the local area and other historical topics of interest. You would also receive "The Chronograph" newsletter that will keep you informed of Museum activities and special events.



NEW opening hours

Closed Tuesday's

Lunch

Everyday (except Tuesday)
from 11am

Breakfast

Weekends and holiday's only
from 9am

Dinner

Friday and Saturday nights only
from 5.30pm

Bookings are essential!
As we may take on catering
events outside of the venue
on those nights

We are fully licensed venue
serving cocktails, wine & beer

4464 3880

savannah cafe

Take your taste buds
on a safari :)

NTA mobile
travel
agents



If you can dream it, I can send you there

I offer a complete travel service specialising in competitive flights, accommodation, cruises, holiday packages, tours and more. I will work to your schedule and together we'll design an extraordinary experience. No matter what type of international or domestic holiday you have in mind, I can make it happen.

Shayne Earley

International and Domestic Consultant

0410 548 704

e: searley@mtatravel.com.au

w: www.mtatravel.com.au

ATAS
travel accredited

VIRTUOSO MEMBER
SPECIALISTS IN THE ART OF TRAVEL

BELMOND
BELLINI CLUB

cruiseco MEMBER
The Cruise Specialists

VIRGINIA
SPECIALISTS IN THE ART OF TRAVEL

THE AUSTRALIAN DECORATIVE AND FINE ARTS SOCIETY (ADFAS)

A MUSICAL TREAT

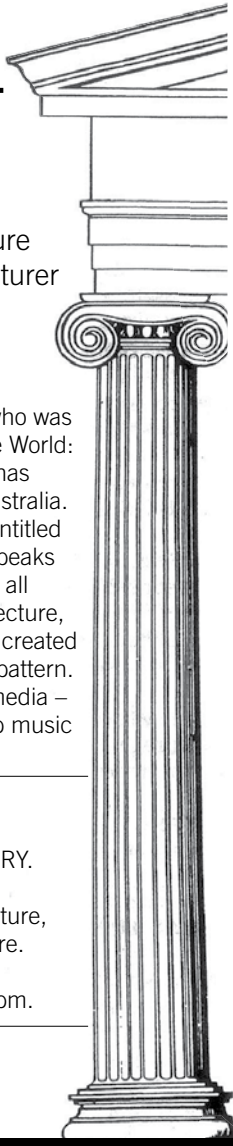
ADFAS Shoalhaven's September lecture will be presented by New Zealand lecturer Heath Lees who for 25 years was Professor of Music at the University of Auckland.

Heath Lees is standing in for Peter Warwick who was to give a lecture entitled To the Far Side of the World: Captain Cook and the Enlightenment. Illness has prevented Peter Warwick from travelling to Australia. The lecture Heath Lees will be presenting is entitled "More to Music than Meets the Ear". Music speaks to us through pictures and gestures in sound, all pre-arranged by talented composers. In this lecture, Heath explores how western composers have created sound-based messages through gesture and pattern. He travels through a wide variety of musical media – instrumental music, opera, sacred music, pop music and (even) advertising jingles.

The date for the lecture is Thursday September 21st 2017 at 7.30pm at The Uniting Church Hall in Albert Street, BERRY. Visitors are very welcome.

Cost is \$25 per person which includes the lecture, wine and delicious sandwiches after the lecture. As the lecture starts at 7.30pm sharp, it is recommended that visitors arrive before 7.15pm.

Contact Heather Macdonald on 4464 3553 or check website www.adfasshoalhaven.org.au.



Berry & District Garden Club News



SECRETARY GAIL PATON 0413 893 508
VISIT US ON www.berrygardens.org.au

As I write this report, spring is only a couple of weeks away and already the jasmine is in bloom and the birds are busy building their nests in anticipation of new life. Our final function during winter was the annual Cancer Soup and Slice luncheon in aid of Can Assist Shoalhaven and we were delighted to welcome the Shoalhaven President and two other members to the beautiful new home of member Julie McQuarters. This was a most informative day learning of the work of Can Assist, a network which provides financial assistance to cancer sufferers in country NSW. This assistance includes accommodation, utilities, petrol, flights, food, medical, pharmaceutical and other needs. Further information is available online at <http://www.canassist.com.au/>.

Guest speakers at the August meeting, Kathy Harrington and Jan Watson explained the art of making cheese. A mutual interest brought them together to explore making different types of cheeses leading to entering their products in the Robertson Show mainly to gain the quality of their product. Much to their delight they were awarded Champion exhibit and went on to encourage this section as an inclusion in the Kangaroo Valley Show. This proved very successful with up to 80 entrants. Known as the Valley Cheese Makers, Kath and Jan will be holding workshops, including a Junior Workshop with details to be posted on their website.

A fun day is assured when members of the Wollondilly Group get together in the Kiama Uniting Church Hall Wednesday, September 6 for Anything Goes with the Combined Choir opening the day with song and dance. Lots of fun at practices putting the two together. As well the branch will be entering a skit. Poetry, short stories, jokes with some surprises I'm sure, will make up the programme. Knitted beanies will be judged and presented to a charity in the Kiama area. This day is not only for members but guests and visitors will be most welcome. The entertainment starts at 10am preceded at 9.30am for morning tea.

The Branch Annual Meeting is fast approaching but, due to our involvement with the Berry Garden Festival the date has been changed to Friday, October 20 at 1pm with visitors most welcome. Leslie Pigott will be the guest speaker on the topic of Nepal. The monthly meeting will take place that morning at 10am.

For further information, please contact President Emily on 4448 8633 or visit our Information Stall in Berry, Sunday, September 3 when members will be happy to explain about the Aims and Objectives of the Country Women's Association.

Rotary
Club of Berry



University Scholarships

Each year the Rotary Club of Berry awards two undergraduate students with "open gift" scholarships towards the costs of their university studies.

There are 2 scholarships offered.

- **The Jack 'Mo' Higgins Memorial University Scholarship** of a \$1000 open gift for students under the age of 25.
- **The Jack 'Mo' Higgins Mature Age University Scholarship** of a \$1000 open gift for students over 25 years of age.

Applicants must be:

- A resident of, or have come from, the areas of Berry, Gerringong or Shoalhaven Heads.
- Studying full-time at a university in NSW or the ACT.
- An Australian citizen or a permanent resident of Australia.

Application Closing date: Tuesday 31 October 2017

To find out more: contact Rotarian Rob Haines 4464 2558 or email berryrotary@gmail.com

BUNDANON TRUST SITWORKS



THE BIRDS & THE BEES

SAT 23 SEPTEMBER

LIVE ART – FAMILY FUN – TALKS

BUNDANON PROPERTY, 12pm – until late
Entry: \$12 full, \$8 conc, children under 16 FREE
Camping: \$10 per person

Book online now!

BUNDANON.COM.AU

Image: Deborah Kelly, Birth of Beeness, 2017

AUSTRALIAN RED CROSS TRACING SERVICE

Just a reminder that this event will be held on Thursday 31st August 2017 at Berry Uniting Church Hall (entry from North Street) at 11.30 for 12 noon for a light luncheon followed by a guest speaker from the Tracing Service. Cost will be \$10 per person with all proceeds going to the Tracing Service.

GARAGE SALE

A Garage Sale will be held at Sheila Keats home on Saturday 30th September 2017 and Sunday 1st October 2017 from 8.30am to 3pm each day.

If you have any items you would like to donate to Red Cross for the sale would you contact Sheila on 4464 2049 and arrange to leave them at her address which is 1 Windsor Drive with the entrance being on Victoria Street.

The proceeds will go to the Red Cross Big Cake Bake Appeal which is the appeal which raises money for Red Cross general funds which allow Red Cross to continue to organise and run all its programs to help those in need.

*Pictured: Guest speaker
Diane Milne and President
Irene Birks at the Red Cross AGM*

BECOMING A MEMBER OR VOLUNTEERING

If you wish to find out about becoming involved with or volunteering with the Red Cross contact the Berry Branch of the Red Cross (see Community Groups page of Town Crier for contact details), the Nowra Red Cross Office (1800 621 433) in Graham Street Nowra or go onto the Red Cross website.

the
power of
humanity



BERRY RED CROSS 2017 AGM

This was held at Berry Uniting Church Hall on Wednesday 2nd August 2017 at 2pm.

The officer bearers for 2017-18 are as follows:

President: Irene Birks

Secretary: Margaret Walsh

Treasurer: Felicity Coughlan

1st Vice President: Lorraine Hankin

2nd Vice President: Fay Atkins

Diane Milne was our guest speaker. Di is a member of Red Cross, and her talk was about her volunteer work as part of the Red Cross Community Visitor's Scheme. She visits BUPA Berry and Jonathan Rogers House in Nowra with her two therapy dogs, "Robert" and "Caddie". They are two beautiful Shih Tzu dogs.

Both dogs are accredited through the DELTA therapy dog programme. They visit the dementia wards weekly, where their presence is invaluable to the wellbeing of the patients.

THE BERRY PHARMACY PRESENTS

"WHAT THE MIND CAN'T REMEMBER THE HEART NEVER FORGETS" ♥ RECOGNISING & UNDERSTANDING DEMENTIA

Find out what causes dementia, how it progresses, what signs to look for and what to expect. For carers and families, there will be advice on managing behaviours, creating a 'dementia friendly' home environment, and information about support services.

COST - FREE

THURSDAY 14TH SEPTEMBER - 1.30PM • UNITING CHURCH HALL, BERRY

Limited seats - Please book your place at The Berry Pharmacy. Afternoon tea will be provided

STEVE SWAN

Clinical Nurse Consultant
- Aged Care, Shoalhaven Hospital Group

DANIELLE WHITE

Manager - Education and Helpline,
Alzheimer's Australia NSW

Berry Community Preschool

Spring has Sprung at Berry Preschool

This month the children have been fascinated by our resident bower bird, which has built a beautiful nest full of blue items next door to preschool. The children love viewing the nest from a short distance and have been drawing, painting and creating bower birds in our craft sessions.

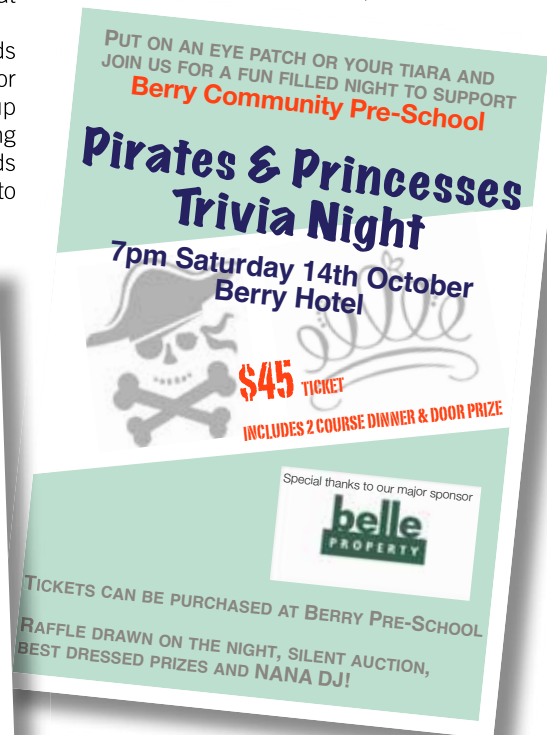
We have also loved our regular Shoalhaven Zoo visits - recently Zoe taught us lots of interesting facts about mammals. Our next two visits will be about pet responsibility and worm farming.

The Tuesday children recently enjoyed a workshop on Aboriginal culture. We listened to dreamtime stories and the beautifully unique sounds of the didgeridoo.

The Wednesday children are amazing artists! Thanks to our art sessions with Chloe and Meg, we know all about some of the most famous artists - Picasso, Monet, Matisse, Andy Goldsworthy, Van Gogh, Frida Kahlo and Salvador Dali. Not only have we learnt all about these artists, we have had a go at reproducing many of their famous works!

We look forward to a fun night with our dads at our Father's Night, which is planned for 5.30-7pm Friday 1 September. The dress-up theme is 'Pyjamas' and we will be stargazing and enjoying pizza and milkshakes. Dads can bring a torch and their preschool child to enjoy a taste of preschool by torchlight.

'Til next time!



An enormous thank you to Bomaderry Bowling Club for recently awarding us a club grant of \$4000!! We will use this money to fund our marvellous music program.

www.berrypreschool.org.au



**Spring**

Sat 9th Sept 1- 6pm

Festival of 4 Seasons

Coolangatta

**+ Liam Maihi**



www.coolangattaestate.com.au

Exceeding expectations.



Berry **Sold**



Berry **Sold**



Broughton **Sold**



Cambewarra **Sold**



Broughton Vale **Sold**



Tapitallee **Sold**



Bomaderry **Sold**



Berry **Sold**



Broughton Vale **Sold**

Mira has achieved outstanding results in and around the Berry region with her superior market knowledge and 6-star service. We have a number of active buyers ready to purchase. If you have any thoughts of selling or would simply like an updated market appraisal, contact Mira today!

Mira Edwards
miraedwards@mcgrath.com.au
0414 247 863

McGrath

mcgrath.com.au



BERRY MEN'S SHED

PROVIDING A SPECIAL SERVICE TO THE COMMUNITY

The Berry Men's Shed continues to grow in membership with a number of new members joining the Shed this year. All members of the community are welcome to join and learn new skills as well as developing their wood working techniques. We provide training to assist members reach their desired levels of capability.

The next Health Talk will be held on Thursday 14th September at 12 noon. The guest speaker will be Stephen Page from Centrelink. Stephen is the head of Financial Information Services at Nowra and he will inform you of the benefits available to members of the community. This is the third time Stephen



has spoken at our Health Talks and he will provide you with lots of information in his presentation.

Our Garage Sale stocks are building up for our annual Garage Sale on Saturday 4th November. It will be the biggest garage sale in Berry with 100's of items at pre-Christmas sale prices.

Our AGM will be held on Thursday 19th October and we encourage all financial members of the Shed to attend and have

their say in the operation of the Shed. We will be sending out specific information relating to the meeting next month.

Our annual Christmas Party has been rescheduled to the Church hall and will be held on Thursday 14th December. This year the function will be catered for by Christine Hill.

The Shed is open on Tuesday and Thursday.

Richard Wiseman
Secretary

ANNUAL GARAGE SALE ON SATURDAY **4TH** NOVEMBER



Twice a Month ~ 8:00am 'til 2:00pm
2nd Saturday & 4th Sunday

Continuing to bring you
seasonal produce,
handmade products,
quality plants & more.

Andrew Place Park
102 Queen St, Berry
(Behind the Newsagent)

Find us on
 Facebook

Enquiries: Contact Tricia on 0425 842 909

SHOALHAVEN
COMMUNITY TRANSPORT
A Division of Coast and Country Community Services Ltd.

SERVICE

Volunteer Drivers, we need you!

We are looking for volunteer drivers to join our valued team in either Ulladulla or Nowra, to help with transporting frail aged people, people with disabilities and people who are transport-disadvantaged. We need drivers who hold a current C Class or LR Class licence.

If you have a passion for helping people and have one or two days spare each week, we would love to hear from you.

Our Service has a modern fleet of cars and buses. Cars work within the local area and also travel to Wollongong, Sydney and Canberra. Buses generally work within the local area, but can travel further afield for weekend social outings.

We supply our Volunteers with uniforms, training and reimbursement for travel expenses to and from work.

Volunteers bring many benefits to our clients who are unable to get to essential medical appointments and social outings.

Volunteers also benefit from volunteering by:

- Helping others who most need assistance
- Learning new skills and receiving professional training
- Meeting new people
- Receiving recognition from clients and the community
- Seeing exciting new places
- Enjoying weekend outings to interesting destinations

If you would like to join our great team of volunteers, please call Peta in Nowra on 4423 6044 or Karen in Ulladulla on 4454 0840 for more information.



Christine Hunt

BERRY REAL ESTATE

Personal, professional service from Christine Hunt

From valuing your home through to sale completion, you can enjoy the benefits of Christine Hunt's personal and professional service.

Christine will:

- Appreciate that your home isn't just an asset, but something as unique as you are
- Spend the time to thoroughly evaluate your home
- Take a personal interest in you and your property
- Deliver excellent results with efficiency, propriety and finesse



Christine Hunt is an experienced agent with a passion for selling property. Give Christine a call today to experience working with an agent who really cares.

📞 0409 399 326 ✉ christine@chbre.com.au

🌐 www.christinehuntberryrealestate.com.au

📍 PO Box 461, Berry, NSW 2535

Edith and Audrey - Planting for Succession

The story behind the picture

The tree Edith and Audrey are planting is **Gmelina leichhardtii** – White beech, a very beautiful tree, but is now an uncommon tree as far south as Berry. The tree will grow readily when planted, but did not have the capacity to recover in our area after logging. 25 years ago, Edith was given 2 White beech seeds by a local seed collector. She gave one to Barry Virtue to plant in the school, and she planted the other at her property in Crozier's Road. Both trees have grown to maturity to produce flowers and fruit, but the flowering cycle only occurs every 2-4 years.

Two years ago, at Plant Prop, Barry took some children to collect a variety of seeds to propagate, Audrey discovered a germinating White Beech seed in the leaf litter.

Since Audrey's discovery at school, more White Beech have been found north of Berry and their seeds have germinated successfully in the nursery and will be planted out in suitable locations.

The photo of Edith and Audrey shows a wonderful symmetry – two generations of tree lovers planting out the 2nd generation of White Beech -. **"Planting for Succession"**.



Edith Faulks and Audrey Heather National Tree Planting Day 28th July 2017
Photo taken by David Rush



The cold weather doesn't stop the Berry Zonta girls from getting on with business, and business means fund-raising for our many projects...

TRIVIA NIGHT – Which this year means A Night at the Opera, the theme and the invitation to dress up as your favourite opera character – or as an elegant opera attendee.

The date - Saturday, 28th October 2017.

The venue - Uniting Church Hall, Albert Street, Berry. **The time** - 6.30pm. **The cost** \$25 - inclusive of booking fee, coffee, tea and cakes - and a lot fun! **The necessities** - fabulous costume, fabulous food, fabulous wine, fabulous table decorations, credit card or cash for buying great auction prizes. **Clever friends** - to match your own smart brains - 8 to a table. (And if you're short of friends, come along and join a table and make some new ones!)

Easy to book at trybooking.com/307153

Come along and join the fun – all proceeds will support our local projects.

Enquiries – Leonie Winlaw 0417 066 677

BIRTHING KITS ASSEMBLY DAY - All play and no work ... we need lots of helping hands to attend our Birthing Kit Assembly day on Saturday 21st October at the Uniting Church Hall, Albert Street at 10am. We have had such great support from the community in past years, and it's always a fun, social occasion – so bring the whole family and join in. To date the club has assembled 14,000 kits, and the need is still just as great.

Please register (for insurance purposes) at trybooking.com/305013

DINNER MEETING - At the Coachhouse Restaurant, Hotel Berry, Tuesday 26th September, 6.30 for 7pm. Please book with Cecilie Lewis on 4464 3913.



Styling For Sale
Styling Holiday Accommodation
Renovation Solutions

STYLE YOUR PROPERTY & SELL FOR A PROFIT

Presentation is everything • Sell it right the first time • Get results fast

2b Old Creamery Lane Berry
Warehouse / Office 02 4464 2605

www.southcoastpropertystyling.com.au
hello@southcoastpropertystyling.com.au

0410 421 825 • 0419 170 970



Berry & District Garden Club News

SECRETARY - GAIL PATON ON 0413 893 508 OR VISIT US ON www.berrygardens.org.au

The golden glow of wattle now brightening the landscape is both a farewell to Winter and a celebration of the arrival of Spring. The young wattle trees shooting up on the slopes of the new bypass give promise of even more colour in years to come. Wattle Day is celebrated on 1 September and a trip to the Mount Annan Botanic Gardens, where you will find a wonderful collection of wattles, may warrant consideration. You could also visit David Jones in the Sydney CBD where Spring is celebrated with massed floral displays from 1 – 9 September. You might find our own Hazel King there, acting as horticultural guide to pre-booked groups.

No-one can be more delighted at the approach of Spring than the owners of our eight Festival gardens who have been anxiously awaiting the stirrings of new growth in preparation for the 12-15 October Berry Gardens Festival. We hope to see you among the expected throngs of visitors out enjoying our beautiful gardens and stunning Berry scenery. The club's plant propagation group is busily preparing for not one, but two sales events. You will find us at Rotary's Small Farms Field Days in September and again, with a much bigger selection, at the Gardens Festival. Plant sales are our chief source of income for the establishment of the new George St park and we appreciate your patronage.

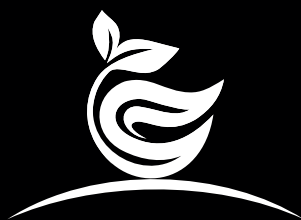
The recent Berry Camellia and Floral Show attracted a hall full of entries and a steady stream of visitors. More than one confessed to allowing a liking for camellia blooms to develop into an obsession. At our August meeting longtime Camellia Show Convenor, Lorraine Heath (pictured) was awarded the Ann Williams Clark Medallion for outstanding service to the Berry & District Garden Club. Lorraine has been an active club member for 25 years and a successful camellia exhibitor across our region and beyond since 2004. She is now an accredited Camellia judge, actively promoting appreciation of this beautiful genus.

Our September Guest Speaker, Dr Keith Houston knows that it is often the large and flashy or novelty plants and animals that capture the viewers' attention, and the beauty and wonder of the small and lesser known organisms are missed. Curiosity is an eye opener and it pays to learn how to look. In his short talk, Dr Houston will take a close look at a feature of "Low Life".

Visitors are most welcome to join us for this presentation. Our next meeting will be held in St Luke's Church Hall in Princess St on Tuesday, 19 September at 7.30pm.



To find out more about our club, please contact our secretary, Mary Seelis, on 44 641191 or visit us on www.berrygardens.org.au



GROUNDLINE
VEGETATION MANAGEMENT

Lantana & Invasive Species Removal
Fire Break & Fence Line Clearing
Asset Protection Zone Maintenance
Highly Efficient and Cost Effective Process
Rural Land Reclamation
Mulched Onsite - *No Piles to Burn!*

RYAN MURRAY

phone: **0411 441 142**

www.groundlineveg.com.au

email: ryan@groundlineveg.com.au

**Honest
Reliable
Service**

Pet Registration Reminders

Is your cat or dog registered on the NSW Pet Registry? As a requirement of the NSW Companion Animals Act all dogs and cats over six months in age must be registered. Shoalhaven City Council will be issuing reminder registration notices to local pet owners who have a dog or cat that is older than six months of age and not lifetime registered.

Microchipping and registration is a two-part process which enables dogs and cats to be recorded on the NSW Companion Animals Register or the new NSW Pet Registry which replaced the Companion Animals Register.

Registering is easily completed online at www.petregistry.nsw.gov.au. You can update your address and contact details, claim an existing pet, change ownership of your pet and pay lifetime registration fees online. However, if help is needed to register your pet please contact or visit Shoalhaven City Council. The register is administered by all NSW councils on behalf of the State Government.

Council's Unit Manager for Ranger Services, Michael Jarman said, "It is a requirement that all dogs and cats are identified with a microchip by 12 weeks of age or prior to the animal being sold or given away (whichever occurs first)."

"Pet owners should be aware that their cat or dog needs to be microchipped by 12 weeks of age and then also registered at six months. A penalty notice can be issued for failing to register your animal or for failing to notify Council when your details have changed. This includes updating details if the animal changes address, changes ownership, goes missing or dies."

If a pet or pet owner's circumstances change, information must be provided in writing to Council within:

- Fourteen days of any change to the registration details, that is if a pet owner moves or changes phone numbers or a dog or cat is adopted by someone else
- Twenty-eight days of the dog or cat dying
- Four days of the dog or cat going missing

Lifetime registration in NSW is a one-off payment and can be completed at Council's administration offices in Nowra and Ulladulla.

The fee schedule for NSW lifetime registration is:

- Un-desexed dog/cat \$201
- Desexed dog/cat \$55
- Animal not desexed under 6 months of age* \$55
- Desexed dog/cat sold by eligible shelter not owned by Pensioner \$27.50
- Desexed dog/cat owned by a pensioner \$23
- Dog/cat owned by a recognised breeder \$55
- Dog/cat owned as an Assistance Animal FREE

*Enables pet owners intending to have their cat or dog desexed to access the discounted registration fee. The pet must be desexed and the Pet Registry updated before the pet reaches 6 months of age. If desexing does not occur, then the additional fee of \$146 applies. Where the pet is not desexed or the additional fee not paid, the registration is cancelled and penalties may apply.

Residents can visit www.shoalhaven.nsw.gov.au/My-Property/Pet-ownership to view information on pet ownership and to download forms to update change of ownership and other details.

For more information on lifetime registration, contact Council's Ranger Services on (02) 4429 3433.



The Redberry Quilters year so far...

Your local quilting group has had such a productive year in 2017.

Our Biannual Berry Quilt Show was held in May. We had a marvellous show. The entries were numerous, of a very high standard, and such a variety from small to very large.

Thank you to all the people who attended the show and generously bought the delicious morning and afternoon teas. Through our entry fees and the teas we are able to donate \$5,500 to Shoalhaven CanAssist.

We have had some very inspiring visiting guest speakers this year. These include:

Kate McEwan; Lisa Johnston; Denise Griffiths and Megan Manwaring, the current President of QuiltNSW. Our gratitude and thanks go to all these wonderful people.

We have also called on our members to talk about their quilting journeys and show the group some of their efforts. Thank you to you too.

We recently held our AGM and the 2018 Executive were elected. At our first meeting we decided to present an exciting line up of guest in the coming year.

As the old Anthony Horderns store motto stated, "while I live I grow"...so if any of our younger quilters would like to come along and join us, please do. New and innovative ideas and techniques can lead us all to challenge ourselves.

Details of our meetings and sewing days are in the Community Group section of the Berry Town Crier.

Julia Birmingham
Publicity Officer - RedBerry Quilters

inoutside more inside, outside.

Simple Process

Inoutside's efficient build process means your studio can be made and installed in 6 weeks with free delivery Australia-wide.



Style & Function

Inoutside's modern, purpose-built and portable designs let you achieve the best use of space to suit your work and lifestyle needs.



Earth Friendly

Inoutside's locally sourced materials help reduce our carbon footprint and integrate seamlessly into the natural environment.



Call Julie today on 0408 891 369 or drop us an email info@inoutside.com.au We look forward to talking soon. inoutside.com.au

Conversations, Coffee and Friends

We were very excited to have **Celia Wade** as our speaker on August 23rd.

Celia is the coordinator of **Slow Food Saddleback**. She talked about the Slow Food movement and the importance of eating local, fresh, seasonal food as well as some of the activities of the group.

Our speaker at 10am **September 27th** is Julie Watts who will talk about her personal connection with the Mowanjum Aboriginal Community near Derby in WA.

On **October 25th** at 10am, our speaker is local lad Bob Arnold who is talking about his experiences as a child in wartime London.

The venue is Wesley Hall at the Uniting Church, 77 Albert Street.

Berry Community Library

A big thank you to Publisher, Mary Cunnane for officially opening the Library.

It was a great celebration and now everyone is invited to borrow from the great selection of books and use the space to relax with friends, discuss favourite books and enjoy a tea or coffee.

WHERE –

Friendship Room behind the Uniting Church 77 Albert Street, Berry

LIBRARY OPENING HOURS

Tuesday 10.00am - 1.00pm
Wednesday 1.00pm - 4.00pm
Friday 10.00am - 1.00pm

For more information contact Janet on 0425 220 258

There is a season...

Winter is drawing to an end and spring is almost here.

The changing seasons are a part of what sustains life on this planet. Without them, the earth would be constantly hot and humid all year along the equator and would get progressively and consistently colder as you moved north or south. By the time we get as far south as Berry, the continuous winter would make life difficult. Instead, people would tend to congregate in the humid, tropical areas. Unfortunately, these are not the best places for growing crops. The constant rainfall would erode the areas cleared for farming and leach nutrients from the soil. Limited food production would mean a limited population. Many of our essential food crops actually grow best where there are cool or cold winters. Add to that the fact that many diseases have evolved and thrive in humid, tropical environments. Winter is what holds them in check. It has also been argued that many human technological advancements are a by-product of finding new ways to keep warm. We need the changing seasons to survive. They are part of God's wisdom in designing the world as he has.

Our lives have their seasons as well. We tend to associate spring with beginnings, with new life, with birth. The summer of life is where we have a career, buy a home, and raise a family. Autumn is a time of winding down, of retirement, of enjoying the fruits of our labours, and of giving back. And we associate

winter with endings and with death. I don't want to be morbid, but I have as many funerals during winter as I have in the rest of the year put together.

I wonder if linking the cycle of natural seasons with life seasons isn't why some religious faiths think of life as an eternally repeating cycle of birth, life, death and rebirth. But that's not the view of life and history that we find in the bible. According to the bible, history is linear. It has a beginning and an end. We're born. We live. We die. And after that...

...each person is destined to die once and after that comes judgment, so also Christ was offered once for all time as a sacrifice to take away the sins of many people. He will come again, not to deal with our sins, but to bring salvation to all who are eagerly waiting for him (Hebrews 9:27-28 NLT).

Jesus ushers in the final season of life for everyone when he returns to bring "salvation to all who are eagerly waiting for him."

The natural seasons change. There's no escaping that. The seasons of life change. There's no escaping that either. But are we prepared for the final season? As we move from winter into spring, let's also consider how can we be ready to enjoy the season of salvation that belongs to "all who are eagerly waiting for Jesus."

Neil Percival



www.berry.anglican.asn.au

ADVERTISEMENT

Gareth Ward
Member for Kiama



"Working for Berry"

Can I help you?

P 4232 1082 | F 4232 3577

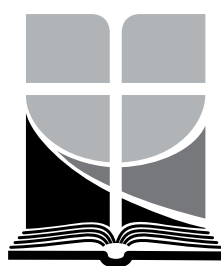
E kiama@parliament.nsw.gov.au

W www.garethward.net.au

A 102 Terralong Street, Kiama NSW 2533.



Authorised by Gareth Ward MP, 102 Terralong Street, Kiama NSW 2533.
This advertisement was produced using parliamentary entitlements.



ST. LUKE'S
ANGLICAN CHURCH

68a Princess Street Berry

Serving the Berry community since 1873

Senior Minister Rev. Neil Percival

Join us for Sunday services

8:00 am (Traditional) or 9:30 am (Families)

or the 1st, 3rd and 5th Thursdays at 11:00 am (Communion)

Phone 4464 1058 or Email office@berry.anglican.asn.au

For information on activities www.berry.anglican.asn.au

www.berryalliance.org.au

SEPTEMBER 2017



You may have heard that we have found it necessary to wind up the committee of the Leprosy Mission, owing to falling numbers and ill health. It has not been a decision taken lightly.

The Auxiliary had been an active group working for the Mission since April 1983, when a group of folk met from the combined churches of Berry. We are thrilled to report that one member remained the whole time and was made a life member of the Leprosy Mission a few years ago. When looking over records of the work of the Mission, we were amazed to learn that from the time head office kept computer records in 1988 of the income from groups, it showed that we had sent \$221 454.20 to the Mission for work with people suffering from Leprosy. For those contributions coming from the generous folk of Berry and surrounding areas we wish to thank you for that and for your encouragement and support over the years.

I would also like to thank the folk at the Town Crier for their monthly publication keeping the folk informed of the work of the group. On behalf of the group, I say Thank You from the outgoing team of the Auxiliary.

**Trish Nicholson | Outgoing Secretary/Treasurer
of the Berry Leprosy Mission Aux.**

For many years the Berry Leprosy Mission Auxiliary raised money to help people affected by leprosy. Due to a number of reasons they have had to close down as a group. We just wanted to acknowledge the community of Berry, and the Town Crier's contributions in helping to raise over 220,000 dollars. We also wanted to say thanks to the Auxiliary for all their efforts in doing this. You have all helped bring diagnosis, treatment and hope to many people affected by leprosy. You can see their stories at leprosymission.org.au

Tim Collison | Engagement Coordinator, Leprosy Mission

SYDNEY EYE HOSPITAL WANTS COUNTRY WORKERS TO STAY SAFE

The Sydney/Sydney Eye Hospital Hand Unit and Eye Clinic are encouraging farmers and workers in rural and remote areas to be safe around machinery and livestock.

The hospital is a state referral centre for hand and eye trauma cases, and in the past year has seen an increase in the number of workplace injuries involving farming equipment, heavy equipment, livestock and DIY tools.

Surgeon Dr Tim Heath from the Sydney/Sydney Eye Hospital Hand Unit and Sydney Hospital Hand Foundation said common injuries including severed fingers and tendons.

"The incorrect use or improper maintenance of machinery or farming equipment can potentially turn that item into a deadly weapon," Dr Heath said.

"Many injuries occur through lack of knowledge of the machinery with new workers or through complacency with experienced workers.

"The Hand Unit strongly advises to always take a moment to think about the task at hand and assess necessary safety measures required.

"Whether you work on a farm or in an office, take the time to assess if what you are doing is safe and how you or your employer can create a safer working environment for all."

Eye surgeon Dr Gregory Moloney from Sydney/Sydney Eye Hospital said wearing safety goggles and protective clothing are simple ways people can help prevent injuries that can cause irreversible blindness.

"Flying debris from a power saw or a branch trimmer can result in foreign objects entering the eye and scratching the cornea," Dr Moloney said.

"Corneal abrasions are relative simple to treat, however, failing to have your eye checked and retaining the foreign matter can lead to corneal scarring, which can be serious."

The Sydney Eye Hospital Foundation and the Sydney Hospital Hand Foundation respectively promote eye and hand safety, medical research and education.

Details: Sydney Eye Hospital Foundation: sydneyeyehospitalfoundation.org.au, 9382 7408.

Sydney Hospital Hand Foundation: shhf.org.au, 9382 7367.

bombo

blinds | curtains | shutters | awnings



4237 8280 www.bombo.com.au

Visit our beautiful showroom at **7 Johnson Street, Kiama Downs** (near the IGA)

WE CARRY THE FABULOUS "BLINDS BY PETER MEYER" RANGE • ALL PRODUCTS COMPLY TO CORD SAFETY LAWS

The Berry Evening VIEW Club is starting its 37th year, having just celebrated 36 years in Berry with many local faces passing through its meetings. We are a friendly group always after new members with new ideas and new stories to tell. We meet on the 3rd Wednesday of the month at the Berry Bowling Club 6.30pm for a 7pm start. We have a raffle and lucky door each time, a meal together and usually a very interesting guest speaker. Or, sometimes we have fun nights with trivia and a few good jokes by some of the members. It allows people to have a Voice and not be afraid to speak in front of other people as they are all your friends. You learn some interesting things along the way and you are helping children with the Learning for Life Program. Children who wouldn't have the chance to better themselves without a little help from us. Occasionally we have trading tables, Bingo days and other fundraising events which all adds to supporting our Learning for Life child which sets a goal for the year. Any surplus goes to the Smith Family. We have two very interesting guest speakers coming up in the next two months and before we know it Christmas will be upon us. Give Jan a ring on 44642181 before 6pm on the Saturday night before the meeting if you wish to come or cancel. We are meeting at the Emporium for coffee and a chat on the first



THIS OLD HOUSE

ARTISAN FURNITURE STUDIO

- Furniture paint supplies
- Hardware & cabinetry
- Custom painted furniture
- Local & handmade products
- Furniture painting workshops
- Creative space for arts & crafts

Phone: 0407 413 584

81 Queen Street, Berry NSW 2535

www.thisoldhousestudio.com.au



@thisoldhousestudio

Thursday of the month so come and join us. We are heading for warmer weather with the arrival of spring so it will be easier to leave the fireside and come to our meeting, hope to see you there in the following months.

**Yolande
Publicity**

*Beverley, Mart and Betty
cutting the cake at the VIEW
Club's 36th Birthday night.*



Clairvoyant in Berry

Judy was born into a family of Clairvoyants and Palm Readers and for generations her family has been conducting readings that offer the opportunity to look into your past, present and future life.

Judy brings all of her skills as a psychic medium, clairvoyant and palm reader, as well as her background in Behavioural Psychology to your reading in order to offer you a comprehensive view into what is currently occurring in your life and where your current choices may lead into the future.

IF YOU ARE LOOKING FOR GUIDANCE, CONFIRMATION OR SIMPLY A GREATER UNDERSTANDING ABOUT YOUR LIFE, A READING WITH JUDY WILL PROVIDE YOU WITH THIS.

PSYCHIC / CLAIRVOYANT PALMISTRY

JUDY - MOB: 0422 234 211





SHOALHAVEN CITY COUNCIL NEWS FROM BERRY

THE BERRY FORUM IS THE COMMUNITY CONSULTATIVE BODY

The following Development Applications and determinations have been notified during the month. They are also placed on the Community Noticeboard and posted on the Forum website www.berryforum.org.au. Details of applications, including submissions, can be viewed on Council's website at www.shoalhaven.nsw.gov.au and select **DA Tracking**.

	Development Applications Received	Address	Lodged
DA17/1877	Demolish structures. Alts/adns to hotel. Construct tourist accom	91 Queen St	12-Jul
DA17/1878	Single storey dwelling	13 Hitchcocks Ln	12-Jul
DA17/1892	Detached garage	5 Boran Place	17-Jul
SF10599	Rural - 3 lot subdivision	41 Bundewallah Rd	26-Jul
DA17/1996	New rural dwelling	265 Bundewallah R	9-Aug
DA17/2000	New inground swimming pool	146 Kangaroo V rd	10-Aug
CD17/1456	Alterations and additions to existing dwelling.	19 King St	11-Aug
DA17/2012	New rural two storey dwelling	76A Borrowdale Cl	15-Aug
	Development Applications Determined		
DA17/1641	Split level dwelling	25 Parker Cres	31-May
DA17/1025	Alterations & additions to dwelling & inground swimming pool	1 Albert St	5-Jan
DA17/1732	Signage - Welcome to Berry	A200B Princes Hwy	16-Jun
DA17/1733	Signage - Welcome to Berry	Andersons Ln	16-Jun
DA17/1801	New single storey dwelling	3 Parker Cres	28-Jun
DA17/1791	New single storey dwelling	5 Brangus Cl	28-Jun
DA17/1812	New two storey dwelling	9 Parker Cr	29-Jun

 Reference Guide 	
SUBJECT	DETAILS
CHEMICAL RECYCLING	Chemical Cleanout at Shoalhaven City Council Carpark Sunday 26 November 9.00 am – 3.30 pm cleanout.com.au Agricultural and veterinarian chemical disposal Agsafe ChemClear program 1800 0080 182 agsafe.com.au
RECYCLING FOR BUSINESSES	Business Recycling 1300 763 768 - businessrecycling.com.au
MATTRESS RECYCLING	Mission Australia Soft Landing 1800 763 852 - softlanding.com.au
FRIDGE BUYBACK PROGRAM	For eligible households, free collection and \$25 rebate 1800 708 401 fridgebuyback.com.au - If you're not eligible for the program, the Berry Depot charges \$12 to take old fridges.
BATTERY RECYCLING	Berry Waste Depot and Aldi Supermarkets.
OUT OF DATE MEDICATIONS	Don't put in landfill or wash down the sink. Return to place of purchase or local chemist.
MOBILE PHONE RECYCLING	Drop off points for Mobile Muster can be found at Post Offices nationally. Closest retail outlets in Nowra are the Optus or Telstra shops, Officeworks, and Shoalhaven Council Administration centre. 1300 730 070 - www.mobilemuster.com.au Greener Mobile buys old mobile phone (along with tablets and smart watches) and pledges to plant a tree for every device they recycle. 1300 128 900 - greenermobile.com.au
ENERGY SAVING TIPS	energyrating.gov.au livinggreener.gov.au 10percentchallenge.com.au/household-tips/ energy.gov/energysaver/energy-saver
ETHICAL SHOPPING	behindthebarcode.org.au goodonyou.com.au
COUNCIL WORKSHOPS	Shoalhaven run free courses on garden waste recycling and other topics. Check the website for upcoming courses. Bookings essential. calendars.shoalhaven.nsw.gov.au/Waste-Management-Events
RECYCLING / REUSE AT LOCAL SHOPS	Some retailers may fill your own containers for take away food, egg cartons may be taken back to the place of purchase for reuse, and original containers. Flavours Shoalhaven refill Morella Grove olive oil glass bottles. Leaf Thai restaurant will fill your own containers when you order take away food.
SHARPS DISPOSAL	Medically generated syringes, needles and sharps can be disposed of for free at the Berry Pharmacy. Take your sharps in a sealed puncture resistant container. The pharmacy will also safely dispose of out of date medication.
ALTERNATIVES TO PLASTIC	Cling wrap; use beeswax coated reusable cloth wraps, which can be composted when they come to the end of their lifespan. Buy from biome.com.au or look online for tutorials to make your own. Paper snack & sandwich bags from If You Care are chlorine-free and greaseproof. This company makes a range of paper products from unbleached pulp from renewable sources. www.ifyoucare.com Plastic bags for dog waste; buy compostable cornstarch-based bags like those at www.goinggreensolutions.com.au Bin liner bags; wrap messy scraps in newspaper. Rinse out bin as required. Drinking straws; buy a set of reusable toughened glass / metal and keep one in each of your family's bags. www.shopnaturally.com.au

Berry Restaurants & Cafes,
Functions & Catering Guide

RESTAURANTS & CAFES

HEDGEHOGS COFFEE SHOP

4/98 Queen Street, Berry - t 4464 3051

7 days - 8am to 4pm

www.hedgehogsgoffeeeshop.com.au

SAVANNAH CAFE

Stan Burt Arcade, BERRY 4464 3880

Please note our NEW opening hours

Closed: Wednesday

Lunch: Everyday from 11am except Wednesday's

Breakfast: Weekends & Holidays ONLY from 9am

Dinner: Friday and Saturday nights from

5.30pm - bookings are essential!

THE BERRY TEA SHOP

Shop 1, 66 Albert Street, Berry - t 4464 1218

Open 7 days: 10am to 5pm

www.theberrysteashop.com.au

email: info@theberrysteashop.com.au

THE BURROWS OF BERRY

71 Queen Street, Berry - t 4464 2817

www.rabbitandcocaterers.com.au

info@burrowsofberry.com.au

Breakfast & Lunch Thursday- Monday from 8am.

Dinner Friday & Saturday. Licensed.

Funky vintage cafe serving modern rustic food.

City Vibe with a Country Soul.

THE LION'S DEN, BERRY

Shop 2/90 Queen St. Berry (diagonally oppo-

site from The Great Southern Hotel)

Open for dinner from Thursday - Sunday from

5pm - 10pm for dinner.

(02) 4464 2087 www.thelionsden-berry.com

facebook & instagram: thelionsdenberry

FUNCTIONS & CATERING

BERRY COURTHOUSE
AND GARDENS

Corner Victoria Street amd Albany Street

Berry 0458 369 266

www.berrycourthouse.org.au

functions@berrycourthouse.org.au

Facebook Berry Courthouse

Functions, Weddings, meetings inside historic

Courthouse and in purpose designed gardens.

BROUGHTON MILL FARM
GUESTHOUSE

78 Woodhill Mountain Road Berry

4464 2446 www.broughtonmillfarm.com.au

bmfberry@bigpond.net.au

FaceBook: Broughton Mill Farm Berry

Functions and particularly Weddings – services

and or receptions, in a 5 star Guesthouse with

3 acres of grounds just 1 k from town.

SAVANNAH CAFÉ

Stan Burt Arcade (shop 5 - in the arcade

behind Cuckoo Corner)

t 4464 3880

www.savannahcafebar.com

Facebook:

facebook.com/savannahcafebar

If you would like your restaurant listed here -
please contact Nancy Davies
0428 037 572 or Email
towncrier@berryalliance.org.au

Calendar of Events

AUGUST/SEPTEMBER

1 - 31 August - Every April + August we call on the community to help us give dignity to those in need at a time they need it most by donating a pack of pads and tampons at our registered collection points including the IGA & Berry Pharmacy. All collection points nationwide listed on www.sharethedignity.com.au

26 & 27 August - Saturday & Sunday - Berry Quilting Retreat and Exhibition @ the Berry School of Arts, 9.30 to 4pm. Contact: Elizabeth@berryquiltingretreat.com.au or M: 0431 663 189.

31 August - Thursday - Berry Red Cross would like to invite you to a presentation by the Australian Red Cross International Tracing Service. Each year thousands of families around the world are separated as a result of war, conflict, disaster and migration. Red Cross helps families to exchange news, re-establish contact with loved ones, and clarify the fate of missing people.

This will be held at the Berry Uniting Church Hall (entry from North Street) at 11.30 for 12 noon for a light luncheon followed by a guest speaker from the Tracing Service. Cost will be \$10 per person with all proceeds going to the Tracing Service.

RSVP Margaret Walsh 4464 2479 by 21st August if you wish to attend.

8 September - Friday - CWA Monthly meeting 1pm CWA rooms Victoria Street

Contact Emily 4448 8633.

9 September - Saturday - Berry Produce Market.

14 September - Thursday - Berry Men's Shed Health Talk Stephen Page Centrelink

Nowra 12pm enquires 4464 2629.

17 September - Sunday - 2pm. Meroo Union Church Service (non- denominational)

followed by Afternoon Tea, cnr. Boxells Lane & Princes Hwy Meroo Meadow.

All Welcome. Contact Brian 4464 2842, Rae 4448 6048.

19 September - Tuesday - Berry & District Garden Club monthly meeting, 7.30pm in

St Luke's Church Hall, Princess St, Berry.

21 September - Thursday - ADFAS Lecture - 7.30pm at Uniting Church Hall, Berry.

Lecturer is Musicologist Heath Lees. His subject "More to Music than Meets the Ear".

Contact Heather Macdonald 4464 3553 or www.adfasshoalhaven.org.au.

24 September - Sunday - Berry Produce Market.

26 September - Tuesday - the Zonta Club of Berry meets 6.30 for 7pm for dinner at

The Coachhouse Restaurant, Hotel Berry. Contact Cecilie Lewis for bookings

- 4464 3913.

30 September - 1 October - Saturday & Sunday - Garage Sale (Berry Red Cross) will

be held at Sheila Keats home on Sat 30/9/17 and Sunday 1/10/17 from 8.30am

to 3pm each day. If you have any items you would like to donate to Red Cross for

the sale would you contact Sheila on 4464 2049 and arrange to leave them at her

address which is 1 Windsor Drive with the entrance being on Victoria Street.

FUTURE DATES

12-15 October - Thursday to Sunday - Berry Gardens Festival.

14 October - Saturday - Berry Produce Market.

15 October - Sunday - 2pm. Meroo Union Church Service (non- denominational)

followed by Afternoon Tea, cnr. Boxells Lane & Princes Hwy Meroo Meadow.

All Welcome. Contact Brian 4464 2842, Rae 4448 6048.

17 October - Tuesday - Berry & District Garden Club monthly meeting, 7.30pm in

St Luke's Church Hall, Princess St, Berry.

20 October - Friday - CWA (The Country Women's Assoc.) AGM at 1pm in the CWA

rooms, Victoria Street, Berry.

21 November - Tuesday - Berry & District Garden Club monthly meeting, 7.30pm in

St Luke's Church Hall, Princess St, Berry.

22 October - Sunday - Berry Produce Market.

4 November - Saturday - Berry Men's Shed Annual Garage Sale

10 November - Friday - CWA Monthly meeting 1pm CWA rooms Victoria Street.

Contact Emily 4448 8633.

Annual Events Guide for Berry 2017

For more information regarding each event please
refer to the community group listing on the next page.

Registered Community Groups organising annual events are welcome to contribute
and advise of further information or changes to listed information.

MONTH	EVENT
RECURRING MONTHLY EVENTS	First Sunday of the Month <ul style="list-style-type: none">Penwood Railroad Inc, a scenic miniature railway open from 10:30am till mid afternoon. 215A Princes Highway - Jaspers Brush NSW - Ph: 02 4464 1201Berry Country Fair (Berry Markets). Approximately 200 stalls selling handmade products, arts and crafts, fresh produce and more. Berry Showground (not held in February).
JANUARY	
FEBRUARY	129 th Annual Berry Show – 3rd & 4th February, Berry Showground
MARCH	Seniors Week – Various venues Clean Up Australia Day, Apex Park
APRIL	ANZAC Day Youth Week Easter Celebrations
MAY	Berry Celtic Festival, Berry Showground National Motoring Heritage Day, Berry Showground
JUNE	
JULY	Tour de Berry
AUGUST	Annual Camellia and Floral Show Berry Spinners & Weavers - Open Day and Exhibition - Saturday 26th August, 2017 from 10:00 to 3pm. To be held in the Rural Youth Hall, Berry Show-ground.
SEPTEMBER	Berry Small Farm Field Day
OCTOBER	Berry Garden Club's Annual Garden Festival
NOVEMBER	Remembrance Day 4th November Berry Men's Shed Annual Garage Sale
DECEMBER	Berry Merry Christmas Carols in the Park, Apex Park Rotary's New Year's Eve Fireworks Berry Showground

Fire Permit Update

The statutory Bush Fire Danger Period in the Shoalhaven Local Government Area ended on 31 March 2017. From 1 April 2017, fire permits will no longer be required for the Shoalhaven Local Government Area.

"Although fire permits are no longer required, property owners must still exercise caution and follow guidelines regarding the use of fire," said Superintendent Mark Williams.

"Residents must notify neighbouring land owners and their local fire authority at least 24 hours before burning, as well as taking appropriate action to ensure containment and control of their fire so it doesn't escape and cause damage.

"Penalties still apply for failing to notify that your intentions of lighting a fire and for allowing fires to escape.

"We encourage people to seek advice from their local NSW RFS Fire Control Centre on how to safely conduct hazard reduction activities such as slashing and burning, as well as how to prepare their homes for the next bush fire season," said Superintendent Williams

Further information regarding hazard reduction can be found on the NSW RFS website www.rfs.nsw.gov.au or by contacting the Shoalhaven Fire Control Centre on (02) 4424 4424.

Why advertise in the Berry Town Crier?

The Town Crier is a community newspaper produced monthly by the Berry Alliance. Our current circulation is 2400 copies. The Town Crier is distributed around Berry and its outer lying areas. Additional copies are given to shops, cafes, hairdressing salons, doctors and restaurants within the township to alert tourists as to what's happening in Berry.

ADVERTISING RATES

Display Advertisement

1 Column

Single rate = \$110 or

Repeat rate = \$297 (\$99 x 3 issues)

Dimensions: 10cm high x 6cm wide

2 Column

Single rate = \$143 or

Repeat rate = \$363 (\$121 x 3 issues)

Dimensions: 10cm high x 12cm wide

3 Column

Single rate = \$176 or

Repeat rate = \$495 (\$150 x 3 issues)

Dimensions: 10cm high x 18.5cm wide

Full Page

Single rate = \$341 or

Repeat rate = \$858 (\$286 x 3 issues)

Dimensions: 27cm high x 18.5cm wide

Trades & Services

1 issue = \$55

6 issues = \$231 (\$38.50 each issue)

12 issues = \$396 (\$33 each issue)

Calendar of Events page

1 issue - \$65.00

6 issues - \$297.00 (\$49.50 each issue)

12 issues - \$542.00 (\$45.00 each issue)

Community Groups

BERRY COMMUNITY GROUPS

Berry Alliance Inc. **0449 569 059**
PO Box 202 Berry 2535
info@berryalliance.org.au
www.berryalliance.org.au

Berry Alliance Town Crier **0428 037 572**
PO Box 202 Berry 2535
towncrier@berryalliance.org.au
www.berryalliance.org.au

Berry Chamber of Commerce & Tourism Inc.
4464 3122
PO Box 216 Berry 2535
info@berry.org.au www.berry.org.au

Amnesty International Berry Local Action Group
PO Box 397, Berry **4464 2879**
Contact Susan Locke
info@berryamnesty.happenings.id.au

Australian Red Cross **4464 2479**
Honorary Secretary -
Margaret Walsh 21 Windsor Drive Berry
1st Wednesday each month at 2.00pm
Berry Uniting Church

Berry Alcoholics Anonymous **1300 903 392**
Meets every Thursday Night at 7.30pm,
Uniting Church Hall Annex,
69 Albert Street, Berry - Garry: 0420 932 494

Berry Al Anon Family Group For family & friends of problem drinkers **4448 8231**
Meet every Monday at 6.30pm
Berry Uniting Church Hall, Albert Street Berry

Berry Forum (Community Consultative Body)
www.berryforum.org.au
2nd Thursday bi-monthly 7.30pm at the
School of Arts Berry

Berry Community Activities Centre Inc. **4464 1476**
Berry Community Craft Cottage
12 Prince Alfred St Berry 2535
1st Monday Monthly, 5pm @ Muir House
berrymarkets@bigpond.com

Berry Courthouse Conservation Committee
PO Box 218 Berry 2535 **0458 369 266**
2nd Monday Bi-monthly at 5.30pm at the
Berry Courthouse
functions@berrycourthouse.org.au
www.berrycourthouse.org.au

Berry Evening View Club **4464 1191**
Secretary, PO Box 275
sel4957@bigpond.net.au
Meets 3rd Wednesday monthly, 6.30 p.m.
at Berry Bowling Club

Berry Leprosy Mission Auxiliary **4464 1693**
17 Gwenda Avenue Berry 2535
3rd Thursday Bi-Monthly (June, Aug etc.)
1.30pm above address.

Berry Masonic Village Auxiliary Inc. **4464 1774**
PO Box 435 Berry 2535 - 3rd Wednesday
monthly, 9:30am - Activities Room Berry
Masonic Village

Berry Meals on Wheels **4464 1604**
PO Box 221 Berry NSW 2535
3rd Monday monthly at 9am RSL Hall Berry

Berry Men's Shed **4464 3956 / 4464 2619 A.H**
PO Box 103 Berry 2535
richardcwiseman@hotmail.com
Tuesdays and Thursdays 9am- 4pm
North Street Berry www.berrymensshed.com.au

Berry RSL Sub Branch
PO Box 3307 North Nowra 2541 -
stuartfchristmas@gmail.com
1st Tuesday Monthly at 9.30am
Sub Branch Hall 26 Alexandra St Berry

Berry Rotary Club **0408 979 337**
PO Box 81 Berry 2535
barker_killaloe@hotmail.com
Every Thursday 6pm for 6.30pm at
Bowling Club
www.berryrotary.org.au

Berry Show Society Inc. **4464 1567**
PO Box 173 Berry 2535
Meet 1st Tuesday monthly at Committee Rooms
at the Showground
berryshow@virtualcity.com.au
www.berryshow.org.au

Berry Showground Management Committee
PO Box 443 Berry NSW 2535 -
berryshowground-camping@gmail.com
Meet 2nd Monday Bi-monthly 7.30pm
Old Council Chambers
24 hour Caretakers / Bookings
Caretakers 0427 605 200

Boomerang Bags Berry
Committee Rooms, Berry Showground
Meets 1st and 3rd Tuesday of the month.
Contact Elizabeth Debbelde - 0431 663 189 /
Katrina Underwood - 0416 181 543

Country Women's Association – Berry Branch
PO Box 321 Berry 2535 **4423 2164**
2nd Friday each month at 1pm
in the CWA Rooms, Victoria Street
Contact Emily Boorer

David Berry Hospital Auxiliary **4464 1774**
PO Box 285 Berry 2535
bke25349@bigpond.net.au
2nd Monday Monthly, 12.30pm
David Berry Hospital Conference Room

Freemasons Lodge Broughton 131 **4421 7346**
PO Box 2092 Bomaderry NSW 2541
Secretary: John Dyason
lodgebroughton131@gmail.com

Jaspers Brush Airport Action Group Inc.
www.takeaction.org.au
PO Box 428 Berry NSW 2535
Meeting - as convened

Lodge Broughton 131 **4421 8026**
P.O. Box 2092 Bomaderry 2541 N.S.W.
lodgebroughton131@gmail.com - Meets
1st Wed. of each month except Jan. at the
Agricultural Hall Berry

Probus Club of Berry **4464 3525**
PO Box 68 Berry 2535
berryprobust@gmail.com
Meets 2nd Tuesday monthly, 9.30am
Berry Masonic Village Hall

Shoalhaven Poultry Group **0410 548 704**
161 Kangaroo Valley Road
1st Wednesday each month above address
info@shoalhavenpoultry.com.au
www.shoalhavenpoultry.com.au

St. Vincent de Paul Society **Client Help Line:**
PO Box 77 Berry - Ph 4464 3940 **4421 0390**
Vinnies Boutique Shop 117b Queen St Berry
Conference meets every 1st Mon. 7pm St.
Patrick's Hall

Zonta Club of Berry
Ph 4464 3913 (Cecilie Lewis)
or 4464 2653 (Leonie Winlaw)
PO Box 302 Berry 2535
email-berry@zontadistrict24.org
www.zontadistrict24.org
Meets 4th Tuesday monthly for dinner

ARTS

Berry School of Arts
Office open Thurs and Fri 10am till 3pm.

Australian Decorative Fine Arts Society - Shoalhaven
PO Box 269 Berry NSW 2535 **4423 5588**
shoalhaven@adfasc.org.au
Monthly, 7.30pm at Berry Uniting Church Hall

Berry & District Historical Society Inc
PO Box 153 Berry 2535 **4464 3097**
berrymuseum@bigpond.com
www.berryhistory.org.au

Berry Silver Band (est. 1897)
Owen 4464 1250 / Kaye 4465 1240
6 Clarence Street Berry 2535
kayecj@westnet.com.au
Meet Monday evenings 7.30-9.30pm,
Agricultural Hall, Berry Showground

Berry Spinners and Weavers **4448 7575**
Contact the secretary (Alison) on 0422 760 363
PO Box 377 Berry 2535
berryspinnersandweavers@gmail.com
Thursdays 10-12noon at
Berry Showground Hall

Cantares: Community Choir
Monday 7.30 - 9.00 pm
Scots' Presbyterian Hall, Alexandra Street Berry
Contact: Peter Dalmazzo 4448 6164

Knit with Love
Lyn 4464 3651 c/- 34 Princess St Berry 2535
terryandlyn@gmail.com
Meets Every Friday 1pm – 3pm St Luke's
Anglican Church Hall

RedBerry Quilters **4464 2587**
Meetings held on the 4th Friday of
each month 9.30am-1.30pm
Sewing Days held on the 2nd Friday of each
month 9.30am-1.30pm at St Luke's
Anglican Church Hall, Princess Street
Please contact mailto:
secretary@redberryquilters.org

CHURCHES

Berry Community Church **4464 2315**
8 Schofields Lane Berry
Services 9:30am and 5:00pm - info@
berrycommunitychurch.org

Berry Uniting Church
Albert Street Berry
Rev Dr David Millikan 0434 977 123
Services at 9.30am - www.berry.unitingchurch.
org.au

St. Luke's Anglican Church **4464 1058**
68A Princess Street, Berry 2535 -
office@berry.anglican.asn.au - www.berry.
anglican.asn.au

St. Patricks Catholic Church **4423 1712**
Albert St. Berry - Normal Mass times:
Sunday 8am Tuesday 5.30pm - Community
Group PO Box 304 Berry meets 2nd Monday
7pm St. Patricks Hall

Scots' Presbyterian Church in Berry **0405 139 031**

E. isaac.jung@hotmail.com
H. 81 Victoria St Berry

EDUCATION AND PLAYGROUPS

Berry Apple Users Group **0416 168 638**
P.O. Box 103, Berry, 2535 Meets at 7.00pm on
the 2nd Tuesday of the month (except January)
at Berry Uniting Church Hall,
77 Albert Street, Berry. Email:
berryappleusersgroup@gmail.com

Berry Community Pre-school **4232 1843**
PO Box 103 Berry 2535 berrypreschool@
bigpond.com www.berrypreschool.org.au

Berry Computers for Seniors **4421 3270**
PO Box 103 Berry 2535
1st and 3rd Wednesdays of each month,
9.00 - 10.30am, Uniting Church Hall,
69 Albert Street, Berry

Berry Ethics Society **0451 153 332**
PO Box 363 Berry
Meets 1st Monday of each month
at the Berry Hotel

Berry Playgroup **0417 796 401**
Berry Community Church Hall
Schofields Lane, Berry. Fridays 9.30-11.30
Facebook: The Berry Playgroup
Email: berryplaygroup@hotmail.com

Berry Public School P&C Association **4464 1158**
PO Box 222 Berry 2535
berrypandc@gmail.com

Mainly Music **4464 1693**
Berry Community Church Hall –
for children under five and parent /carers
Meets Tuesdays during school term
10-11.30am \$4 per family

GARDENING AND LAND CARE

Berry & District Garden Club **0413 893 508**
PO Box 122 Berry 2535
3rd Tuesday Monthly, 7.30pm
St Luke's Church Hall, Princess Street
Gail Paton - Secretary - gailpaton@bigpond.com
www.berrygardens.org.au

Berry Landcare **4464 2241**
PO Box 422 Berry NSW 2535
berrylandcare@gmail.com
See monthly article for working bees.

Berry Public School Plant Propagation Nursery
Lyn 02 4464 3911
Meet Thursday afternoons during school hours
lyn-clark@outlook.com.au

Brogers Creek Landcare **4465 1482**
53 Wattamola Rd Wattamola NSW
Last Saturday of each month 2.30-4.30pm

Gateway Community Garden
141 Woodhill Mountain Road
All welcome, plots available.
Contact: Tony Hampson 44641504

Hands Across NSW Inc **4446 0567**
PO Box 162 Cambewarra NSW 2540
Meets 1st Sunday, monthly at Broughton Lodge,
Berry Agriculture Hall

POLITICAL GROUPS

Australian Labor Party Berry Shoalhaven Heads Branch **0429 012 796**
Meets 2nd Wednesday each month,
6.30 pm Hotel Berry
secretarybshalp@gmail.com
PO Box 474 Berry 2535

Liberal Party of Australia – Berry Branch
Meets 1st Monday of the month 6.30pm
for 7pm start at Gabbys of Berry

RECREATION

Berry Bridge Club INC **4464 3009**
PO Box 366 Berry 2535 mcorran@
shoalhaven.net.au
Meets Saturdays @ 12.45pm-4.30pm at the
Masonic Lodge Community Hall

Berry Camera Club **0488 031 961**
Meetings on 4th Wednesday of Each Month
6:00 pm @Berry Bowling Club
Info: www.berrycameraclub.com
fb:BerryCameraClub

Berry Crafters & Quilters **4464 3788**
Meets each Wednesday 10am –
4pm at Muir Cottage, Prince Alfred Street

Penwood Rail Road Inc. **4464 1201**
B215a Princes Highway Jaspers Brush 2535
Running day 1st Sun monthly - visitors welcome

Shoalhaven Historic Vehicle Club Inc. **4464 1723**
PO Box 1, Nowra NSW 2541

SPORT

Berry Hockey Club **0412 218 704**
PO Box 4055, Nowra East NSW 2541
www.berryhockeyclub.com.au

Berry Netball Club **0417 285 789**
1 Barwon St Bomaderry
Meets monthly at the Great Southern Hotel
MT816834@bigpond.net.au

Berry Men's Bowling Club
David Armstrong 4464 1543 PO Box 139,
Berry NSW 2535
Ph: 0488 729 229 Harry Harrop on 4464 3043

Berry Junior Mixed Touch Football **0431 530 543**
7 Boran Place Berry 2535
becandtom2@bigpond.com
School term 4 – Thursday 4pm till 6pm at the
Berry Sporting Complex, North St Berry

Berry Riding Club **4464 1143**
445 Coolangatta Road Berry 2535
1st Tuesday monthly at the Berry Hotel
jasiiy@bigpond.net.au
www.berryridingclub.com

Berry Shoalhaven Head Rugby League Football Club
PO Box 282 Berry - Meet every 4th Wednesday,
7pm Great Southern Hotel, Berry.
Email: Wdstrong@bigpond.com

Berry Shoalhaven Heads Cricket Club
0422 688 901
PO Box 206 Berry NSW 2535
www.bshcc.nsw.cricket.com.au
2nd Monday of each month
during cricket season at the Berry Hotel

Berry Shoalhaven Heads Junior League
0414 973 795
PO Box 162 Berry 2535
bshjrllfc@hotmail.com
First Wednesday of the month,
7pm at the Berry Bowling Club

Berry Tennis Club
PO Box 133 Berry NSW 2535
e: berrytennis@hotmail.com
7.30pm bi-monthly
starting in February each year,
Berry Tennis Club, North St Berry

Berry Women's Bowling Club
Meet Tuesdays and Thursdays 9am during
daylight savings;
9.30 in winter @ Berry Bowling Club.
Contact Bev Thompson: 0400 516 303 or
Pam Tulloch: 4464 2284

Diamond Calisthenics Club
Jodie Dearsley 0414 655 129
Classes for ages 3-100 held Tuesdays at Berry
School of Arts, Cnr Alexandra and
Princess Sts Berry
www.diamondcalisthenics.com
diamondcalisthenics@hotmail.com

EMERGENCY 000

Police Assistance Line (non-urgent Police reports) 131 444
Berry Police 4464 2175 - Fire and Rescue NSW 4464 1008 or 000
Rural Fire Brigade (Broughton Vale) 4464 1522
SES - For Emergency help in floods and storms 132 500

Landcare BERRY

Gembrook Tree Planting:

A very successful tree planting was held at 'Gembrook' on the 30th of July. About 70 people of diverse ages and origins committed themselves to the planting of 550 plants. The work also included watering, staking and protecting all plants with plastic covers. This was a major undertaking. The site is owned by the Roads and Maritime Services. Four weeks before they paid for the surrounding fence installation and on the day provided water (2 x water tanks & pumps on trailers). Prior to the workday the Conservation Volunteers Australia whipper-snipped, cut and painted privet, tobacco bush and other weeds and drilled the holes for the planting. This showed the sense of community within the local population.

The site is 500m x 20m and joins the Bragg Bush Links site under the Princes Highway with Broughton Creek. It includes some riparian zones subject to flooding and these areas were planted with River Oaks. The existing Broughton Creek area supports a population of Large-footed Fishing Bats (Myotis macropus). This is one of the largest population recorded in NSW.

The plants of 26 different local species included varieties of local Eucalyptus, Turpentine, Flyntwood, Bleeding Heart, Cheese Tree, Paperbarks, Sandpaper Fig, Kangaroo Apple, Willow Bottlebrush, Boobialla and River Oak. We were very lucky as the weather provided follow up watering over the following week. We hope that will continue.

Large Footed Myotis:

This small bat is only 54mm long in body and head, with tail length 38mm. It weighs about 10grams and is a grey-brown colour on top and paler under. Its distinguishing feature as its name suggests is its large feet (10-14mm). It catches insects and small fishes by flying over the surface of the water and taking prey with its rake-like rear feet. It is classed as common limited species. It is associated with River Oak Riparian habitat as found at the Gembrook site.



View back to Highway, (Walter Bagnarol)



Large-footed Myotis

Plant identification service: Please contact Harvey Blue 4464 1880 or Ian Parker, 4448 6359. Visit our pages at: <http://www.landcare.nsw.gov.au/groups/berry-landcare> for more on Berry Landcare and late changes to working bee details. Information can also be found on Facebook.

WORKING BEES FOR SEPTEMBER 2017:

Alexandra Street Parkcare: 9-11 am Friday 15th September: Gail Paton 4448 7915.

Bong Bong Road: 9-11am Sunday 10th September: Julia Woinarski 4464 2084.

Broughton Vale: 2-4 pm Sunday 3rd September: Kelvin Officer 0427 255417.

Bundewallah Bushcare: 2-4pm Sunday 24th September: John Clark 4464 3911.

Camp Quality: 9-11am Sunday 17th September: Hugh Sheil, hugh.sheil@realtimecom.com.au or Jeanne Highland 4464 1271.

Moeyan Hill: 2-4 pm Saturday 23rd September: Bill Pigott 44643241 or wpigott@bigpond.net.au.

Mount Coolangatta: Nola Barker. Mobile 0409 446 418, nolajbarker@live.com.au. Time to be advised. Meet at end of Roxbrough Rd, Far Meadow.

Mark Radium Park: 9-10am Friday 22nd September: Rodney Cole 4464 1475.

Princess St. Parkcare: 9-11am Monday 25th September, Terry Oades 4464 3654.

Tindalls Lane: 2-4pm Sunday 10th September: contact Jim Jefferis 4464 2988.



Borrow, Use, Reuse & Return

Katrina Underwood

Bring Your Own Bag: the smart alternative to using plastic bags. However, our hand-made Boomerang Bags are available at a number of retail outlets in town to help you out if you forget. Here's where you can pick up a bag and drop them off:

• IGA • Emporium • Sew & Tell • Il Locale Gelato • Justin Lill Wines • The Original Berry Bakery • The Berry Pharmacy • Flavours Shoalhaven • The Post Office • Delicious Café.

It is great to see so many shoppers and retailers embracing the campaign to reduce the use of plastic bags in town. We are thrilled to be on the receiving end of some great reports from local businesses

since Boomerang Bags were introduced. The IGA has reported that their purchase of plastic bags has reduced by "8,000 a week" and that is phenomenal! Sharon and Jane in the Berry Pharmacy always manage to lift our spirits with great feedback. They report that customers have "embraced with enthusiasm" the introduction of our Boomerang Bags into the store. The pharmacy

is now totally plastic bag free, so shopping there means bring your own bag, borrow a Boomerang Bag or carry your purchases. We also believe there is a flow on effect with the reusable bags to changing café culture. You will now find many cafes selling Keep Cups and offering a coffee deal with purchase. Comments from locals on The Berry Community Facebook page have also been SO encouraging and positive: it makes our commitment, to introduce into the community an alternative to plastic bags, so very worthwhile. It takes some considerable time and effort to produce the bags, but to see them being used is most rewarding.

On Friday, 29th September, we will have a table outside the front and back entrances of the IGA to answer questions and talk about managing waste and sustainability. We will have product suggestions and ideas to share. If you would like to join our Boomerang Bags' group you don't have to be a sewer, some people only iron!

Meetings: 1st and 3rd Tuesdays of the month
Contact: Katrina Underwood 0416 181 543
The Committee Rooms
Berry Showground
Alexandra Street



Wayne Pascoe, long time resident of Berry, returning his borrowed Boomerang Bag to Berry IGA. As an animal lover, he passionately believes in protecting the environment from plastic bag pollution. Thank you, Wayne!



YOU CAN FOLLOW US ON Boomerang Bags Berry



Weather watching
by the fire
- only at The
Lookout

The Lookout
Cambewarra Mountain

new winter menu same glorious views

open 7 days Mon - Fri 10am - 4pm
Sat & Sun - breakfast 8 - 10:30am open till 4pm
Cambewarra Lookout Rd, off Tourist Rd 4465 1321

News from Berry Tennis Club

Please Reply to: The Secretary PO Box 133, Berry NSW 2535 Email: berrytennis@hotmail.com

Berry Tennis Club AGM

All members and interested Community members are advised that the Berry Tennis Club AGM has been set for 6.30pm on 7 September 2017 at the Berry Bowling Club.

New Members Welcome for our competitions

Our Winter Competitions are up and running. People interested in playing may still be able to find a spot to play. In particular, our Tuesday night competition would welcome new players.



Day time Competition – Coordinator and Players Wanted

Currently all our formal competitions run at night. Any current or new member interested in being the coordinator for a day time competition, that could be held on any morning Monday to Thursday, and any person interested in playing in a day time competition, please email the Club, with your preference of day, and we will see if there is interest in starting up a new competition.

The courts are available for hire by Club Members and the general public. Access keys and hire charges are collected at the BP Garage in Berry.

FOR ENQUIRIES ABOUT MEMBERSHIP, COMPS OR EVENTS
YOU CAN ALWAYS EMAIL: BERRYTENNIS@HOTMAIL.COM.

Dancing for Joy

latin, disco, popular, easy international folk dances

* increase vitality & energy * sharpen your brain
* have fun & make new friends

Suitable for all. No dance experience needed!

Thursdays
except the first of the month
9.00 - 10.00 am
Cost: \$15
Berry Uniting Church Hall
77 Albert St
Bookings required.



Contact Marilyn - Ph: 0412 244 735 E: info@totalbeing.com.au
or email info@totalbeing.com.au



Berry Community Church Partners

At Berry Community Church, we know the value of partnerships; it is one of our 5 key priorities as a church. We recognise that there is so much more that can be achieved when we work with other organisations that share our values and desire to see people in our community experience the kind of life that Jesus spoke about when He said, *"I came that they may have life, and have it abundantly."* (John 10:10b)

One example of this has been our partnership in Safe Shelter Shoalhaven. Safe Shelters Shoalhaven is an organisation set up and run by local churches in and around Nowra to provide a bed, for those without one, to sleep in during winter. It has been well supported also by the Shoalhaven council and some very generous local businesses. This has been and continues to be a great opportunity to show the love of Jesus in a real and tangible manner.

Another local organisation we partner with is 'A Taste of Paradise' farm run by Tim and Andy Francis. The team at ATOP work primarily with young people from hard backgrounds. Farm manager Tim says; *"Many of the young people that come to our farm have become*



Berry Community Church

**We meet at Graham Park
8 Schofields Lane Berry
Sunday Services 9:30am and 5:00pm**

Activities include mainly music, Boys & Girls groups,
Berry Youth & Connect groups.

We'd love to see you here.

info@berrycommunitychurch.org 4464 2315
www.berrycommunitychurch.org

disillusioned with life. They harbour a lot of resentment about their circumstances, and justifiably so. They've been let down by the people and authorities who are meant to help them. Through interacting with our animals, the natural environment of the farm and through the therapeutic benefit of seeing results from your own work, they begin to find their place in the world and realise that they can create opportunities for themselves and determine their own future." At BCC we love seeing this kind of thing happen, and it's why we partner with ATOP.

As a church, we are putting on a fundraising 'driver revival' day on the Monday of the October long weekend (October 2nd). Devonshire tea and a BBQ will be on at Berry Community Church (8 Schofields lane). There will also be plants for sale. All proceeds will go to the work of 'A Taste of Paradise' farm. The gates will open from 10am and close at 4pm. We'd love you to come along, invite your friends and support this great organisation.

Joel Noonan
Berry Community Church



info@berrycommunitychurch.org 4464 2315 www.berrycommunitychurch.org

The preferred choice for Berry holiday rentals



www.berrygetaways.com.au

There are so many options available for managing your holiday rental property today. But Berry Getaways is still a preferred choice by many, because the local, honest and dedicated team of professionals led by Joy Hofman at 121 Queen Street, Berry. Landlords and visitors enjoy the extra care and attention they receive from the Getaways team.

With loads of property options for holidaymakers in the immediate area, it's easy to see why they boast such impressive occupancy rates.

If you're looking for the best way to manage your investment property with the best local holiday letting agent, come chat with Joy or the Getaways team at any time.



(02) 4464 1793
121 Queen St,
Berry NSW 2535





Berry Men's Bowling Club

Play in the 2017 Club championships has continued. The Club Fours was an entertaining match of bowls with the title going to the team made up of Ken Chittick, Col Good, Terry Bezant and Peter Delamont who on the day were in a form that defeated Bob Dunn, David Lambert, Geoff Lidbetter and David Badger. The Triples has also been finalised and the title went to Col Good, David Badger and Adam Rigney who in windy conditions defeated Russell Tulloch, Nick Nicholls and Neil Robinson.

On Wednesday 12th July, the second match of the Triangular Cup was played at Shoalhaven Heads in varying weather conditions with victory on the day going to Gerringong Club with Berry in second position by a small margin from Shoalhaven Heads. The third and final match for 2017 will be played at Gerringong on Wednesday 11th October.

Social play of a Wednesday and Saturday has continued despite the demands of the Club championships and enjoyable competitive matches have resulted on greens which due to the very dry weather have been rather fast which has necessitated most players altering their bowling style. Play in the social bowls of a Wednesday and Saturday is open to visitors and to anyone that wishes to try out the game. Bookings are taken on 0488 729 229 on day of play up until noon and play commences at 1.00pm. If necessary, a set of bowls can be loaned to those trying out the game, dress is casual mufti and flat soled shoes that will not damage the greens are essential. For additional information, contact the Bowls Organiser David Lambert on the above number. Bowlers or potential bowlers that feel they would benefit by some introduction to the game are invited to contact Coach Terry Hayes on 0423 139 028.

With the festive and holiday season fast approaching those interested in using the Clubs excellent facilities are invited to contact the Club staff on 44642995. Barefoot bowls is an excellent format for social gettogethers and bowls can be loaned where necessary.

Berry Women's Bowling Club

Our Minor Singles, Minor Pairs and Major Triples Championships have been held recently, with a high standard of play, and Berry teams have also taken part in District competitions.

Two Berry teams entered the State Carnival in late May, playing two games a day over three days. It's been 12 years since the carnival was last staged in the local area so it was an excellent opportunity to participate.

Mixed Pennants, a South Coast initiative, played over the winter. Sides consisted of teams with a mixture of women and men. The Berry Pies drew for first place but ended up being placed second by one point, after a count-back of the season's results.

The Club recently held its annual Town of Trees triples tournament. Good weather and full greens ensured a very successful day. It began with morning tea and a Spider, in which everyone tried to send their bowl closest to one of the chocolate bars strewn across the green. Then it was on to the serious but fun business of competitive bowling. An excellent lunch fortified everyone between games and we ended with the awarding of raffles and prizes.

Social bowls is on Tuesday and Thursday mornings and we also play mixed bowls with the Men's club on Saturday afternoons. Free coaching is available and we can lend you a set of bowls. If you'd like to give the game a try, or take it up again after a break, then contact Heather Fealy, our coach, on 4464 3624 or Pam Tulloch on 4464 2284.

Announcement of tournament prize winners.



Energising Chair Yoga

created specifically for the wellbeing needs of the mature body

- * releases tension * improves stamina & strength
- * improves posture & balance * relaxes body & mind
- * better flexibility & concentration



Wednesdays
except the first of the month
9.30 - 10.30 am
Cost: \$15
St Luke's Church Hall
68A Princess St Berry
Bookings required.



Contact Marilyn - Ph: 0412 244 735 E: info@totalbeing.com.au
or email info@totalbeing.com.au



**SCOTS' PRESBYTERIAN
CHURCH, BERRY**

All Welcome!!!

Service Time: Sunday 10am

Sunday School: Sunday 10am

Minister Rev Isaac Jung - 4464 1020

**Cnr Alexandra Street & Victoria Street
Berry**

*Our purpose is to
Love God with our heart, soul, mind and might
and to
Love our neighbour as ourselves.*

*Ordinary people worshipping an
extraordinary God*

www.berrypresbyterian church.net.au



Raine&Horne Berry
would like to introduce our
newest Team Members:



PRINCIPAL/SALES
Alex Cochrane
0412 081 600



SALES
Jacqui Crapp
0429 104 011



SALES
Patrick Tynan
0418 603 980



SALES
Kimberley Clarke
0418 204 518



Property Manager
Mat Whip
0416 671 252

Kimberley Clarke Licensed Real Estate Agent

Kimberley has lived in the Berry region for over 20 years and is actively involved in her local community. She has extensive knowledge of the area and genuinely loves to help people with their real estate needs.

Margaret Skelton Property Manager

Margaret has extensive real estate experience and her impressive track record makes her an invaluable Property Manager. Margaret is known for her friendly and professional service and her total commitment to customer satisfaction.



If you would like to discuss how we can help you
showcase your property for sale or lease please
give us a call 4464 1300

Raine&Horne

02 4464 1300
www.rh.com/berry

rh.com.au

SHOP AND SAVE BIG \$\$\$\$

Wholesale Nursery Berry

📍 45 Agars Lane, Berry ☎ 4464 1102

Our 4 acre wholesale production nursery located in the beautiful town of Berry **is now open direct to the public.** All our plants are grown on site with over **100,000 plants to choose from.** Shop where the trade shops and save big money on quality plants.



Mon-Fri 7am to 4pm
Saturday 8am - 4pm
Closed Sundays & Public Holidays

Planting for succession

From the rain forest to plant propagation

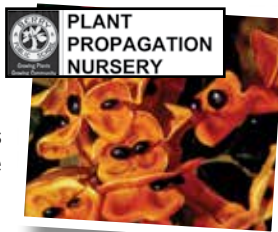
National Tree Planting Day at Berry Public School was very special this year, with community groups volunteering to assist Year 6 with the planting.

The plants were selected because most had been sown from seed by these children when they attended Plant Prop in Year 3. Germination of rain forest seeds can take weeks, months and even years, but the plants were now ready to be planted out.

The purpose of the tree planting this year is to grow a **Tree Orchard.** This will allow the children at Plant Prop an opportunity to collect seed in season, an activity that has been restricted because of the limited number of suitable species accessible within the school grounds.

In several years, the **TheTree Orchard** will grow up to create a tall canopy, the shrubs will form a mid canopy, providing habitat and nesting sites and a food source for birds, animals, and insects, and the grass will be replaced by ground covers and leaf litter.

The 3 layers will shade and protect the ground and gradually as the leaf litter



forms, the soil will change, providing nutrients for the plants as well as homes and food for thousands of invertebrates and microscopic creatures. A whole new ecological environment will develop that can be studied under the microscope.

The Tree Orchard will also provide an outdoor learning space for studies based around the natural world.

Seed collection is the basis of continuity and succession.

As most of the tube stock at the nursery is grown from locally collected seed (rather than from cuttings), without the seeds, there are no plants.

Seedpods of the Snow wood burst open to reveal the spectacular shiny black seeds

Check out Town Crier Facebook page to see flower and seed details of some of the plants in the Tree Orchard : **Snow wood** – *Pararchidendron pruinsum*, **Bolwarra** – *Eupomatia laurina*, **Clover tree** – *Goodia lotifolia* and **Native mulberry** – *Hedycarya angustifolia*.

Dates for your diary:-

- **BPS POP UP PLANT STALL** at Small Farm Fields Days 8th and 9th September
- **"Growing Illawarra Natives" Workshop** Saturday 21st October

ADVERTISEMENT



ANN SUDMALIS MP

Federal Member for **Gilmore**

🏠 59 Junction St, Nowra NSW 2541 ☎ 4423 1782

@ ann.sudmalis.mp@aph.gov.au 🌐 annsudmalismp.com.au

f AnnSudmalisMP

Authorised by A.Sudmalis MP, 59 Junction St, Nowra NSW 2541.



140 Princess Hwy
Berry Ph:4464 2995
www.berrybowling.com.au



Berry Bowling Club

CHINESE

RESTAURANT

Lunch & Dinner - Wednesday to Sunday

Ph 4464 2388

LUNCH SPECIALS

Wednesday to Sunday From \$7.50



*Consider Berry Bowling Club
for your next Special Event*



raffles!

Every Thursday, Friday, Saturday & Sunday

Drawn Thursday 7.15 Fri, Sat, Sun at 7.30

Free Trivia on Sunday

See Bar Staff For Details

BOOK YOUR OWN

BAREFOOT BOWLS PARTY

BOOK YOUR WORK

BAREFOOT BOWLS PARTY

- Cost \$10 per person which includes bowls hire coaching and set up
- Both BBQ's can be hired for self-catering



See the bar to make
a reservation or
Ph:4464 2995



Social Bowls

Men's

Wednesday 1pm

Ladies

Tuesday 9am

Mixed

Thursday 9am

Saturday 1pm

Mens Ph: 0488729229

Ladies Ph:0419875358

Calling all Poets to the Annual Poetry Slam

Whether you are a new poet or an old hand at writing and celebrating poetry, the Shoalhaven is calling all poets to represent our region in the Australian Poetry Slam. This is your chance to showcase your wordsmith talents.

Shoalhaven Libraries is holding a heat of the Australian Poetry Slam on Saturday, 2 September. Registration is at 12.30 pm at Nowra Library at 10 Berry Street, Nowra. "To hold a heat of the Poetry Slam is a great honour," said organiser Robin Sharpe from Shoalhaven Libraries.

To encourage poets to get involved, Nowra Library is offering a Poetry Slam boot camp on Friday, 1 September from 5pm – 8pm at Nowra Library to prepare people for the slam. This is a unique opportunity to work with two of the world's best wordsmiths Arielle Cottingham and Zohab Kahn on your writing and performance.

This crash course is guaranteed to overhaul your poetry and help you deliver your words straight into the minds of your audience. The second part of the workshop will feature

- QUALIFIED HORTICULTURIST
- GARDEN MAKEOVERS & RESTORATIONS
- GARDEN MAINTENANCE
- GARDEN DESIGN & ADVICE
- REGULAR LAWN MOWING & EDGING





HATHAWAY GARDENS

WE SERVICE BERRY, GERROA, GERRINGONG, KIAMA & SURROUNDING AREAS

Phone Lawrie Hathaway 0411 888 333

professional media makers who will guide you on a step by step journey from recording to uploading your video and audio online. The workshop is an ideal opportunity to prepare you for the Poetry Slam the following day. At the Poetry Slam, performing writers are given a microphone, a live audience, and just two minutes to capture the crowd. Whether you're a poet or an audience member, you can be part of the search for the next slam champion.

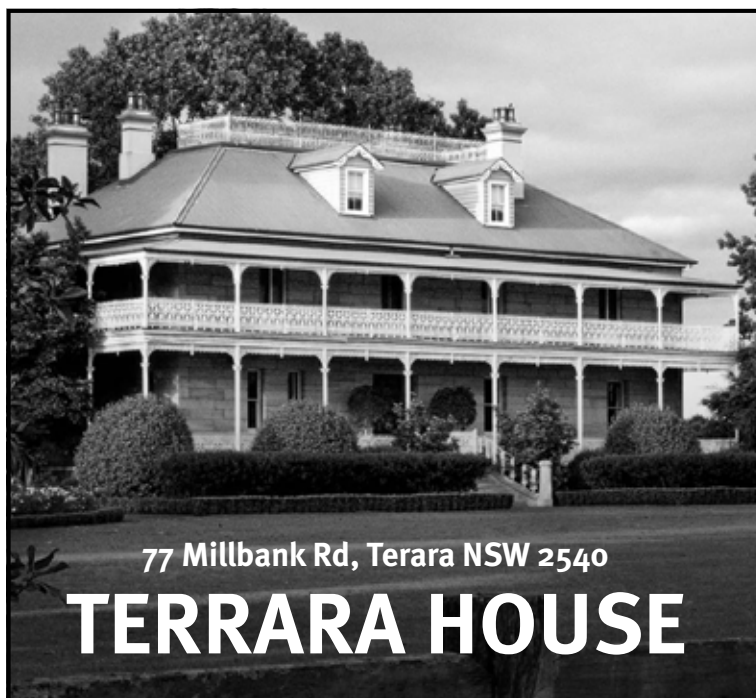
The MC selects five judges at random from the crowd. After each performance, judges hold up score cards using a 1- 10 scale, with

10 being the highest. Of the five scores for each poet, only the middle three scores are counted.

The competition runs 50 heats across city spaces and regional venues in Australia with the Shoalhaven chosen as one. There are heats in every state and territory. From each heat, two performers from each heat are chosen by their audience as local slam champions.



For more information and to register for the competition visit the Australian Poetry Slam website at www.australianpoetryslam.com/nsw or to book the workshop contact Nowra Library on email library@shoalhaven.nsw.gov.au or Tel: 4429 3705.



77 Millbank Rd, Terara NSW 2540

TERRARA HOUSE

Expressions of interest

Elders

 7  3  4  16.85 acres

Berry

Terrara House is undoubtedly the finest historic mansion in the Shoalhaven region. Constructed from local sandstone in 1904 and designed by Richard Moore, Terrara House is exceptional in scale and grandeur with 20 rooms over three levels and impressive period details throughout. The Estate covers 16.85 park-like acres, including 12 acres of gardens.

From the grand entry foyer and staircase to the 13 fireplaces and wide verandahs with iron lacework, the house has been sympathetically and thoroughly restored over the years by previous owners and seen the addition of a separate commercial kitchen, a conservatory, 18 metre heated swimming pool, all weather championship tennis court and a luxury day spa. The original stables have also been restored to provide charming and comfortable guest accommodation.



Call Tim McGoldrick to discuss this property today!

 0414 157 794  tim@eldersberry.com

4464 1600 • www.eldersberry.com • 121 Queen St, Berry

BELLE PROPERTY BERRY

Testimonials

"Gary impressed from the off. His estimate of likely sale price was considerably higher than the other agents who told me that was his tactic for getting my business. Gary secured the sale at \$400k more than the competition had suggested we would get. Gary was fun to deal with and I am looking forward to a few glasses of wine with him and Susan to celebrate a fantastic result."

- Peter & Julie Dryer

"We would recommend Nick Dale to anybody interested in buying or selling in the Berry area. He seemed to show genuine affection for our property, which dates back to the 1860s, and was well aware that he had to find the right buyers for such an old but character-filled property. He fully understood the business potential of the property and clearly outlined that to buyers. He was always careful to show the property to buyers when it looked its best, and was flexible enough to do so in between weekend holiday bookings. However, it must be said that Nick is a thoroughly warm and genuine professional who engenders trust in both the buyer and seller. He was a delight to deal with."

- Ralph & Janet Hanson

Our Brand –

Belle Property Berry believes great people make a great business. Our agents are talented, dedicated and community minded professionals. We value integrity, trust and sincerity as much as we value hard work, determination and success. Our people do business with heart and purpose and we support them with a business environment conducive to success.

We sell simple studios and multi-million dollar homes with the same commitment, professionalism and attention to detail. We believe outstanding presentation, strategic marketing, genuine client service and superior sales skills are the core ingredients of a premium outcome at any price level.

Our Service –

Quality service begins with courtesy and respect, backed up with enthusiasm, a desire to support and help, as well as a determination to ensure the job is done properly. Clear, open communication is essential in bringing the right properties and buyers together. The team at Belle Property Berry take the time to understand what is important to their clients and make sure they are informed every step of the way.

Time and time again, this has proven
to be the difference between
'FOR SALE' and 'SOLD'.



Gary Dale
Principal/
Licensee



Nick Dale
Property
Consultant



Susan Dale
Office
Manager



Emily Agar
Property
Manager



Maddison Savage
Sales
Assistant



Alison Darlow
Sales
Assistant

122 Queen St, Berry



(02) 4464 1636

DAVID BERRY HOSPITAL AUXILLIARY

First thank you to all the people who supported our catering at the Berry Camellia Show. We had great feedback for our soup; and who can beat homemade hot soup and also, our sandwiches and slices? Even though we are short in numbers, we all work together well, SO how about joining our Auxiliary and help support the David Berry Hospital?

At our A.G.M, the following were elected:

President - Marilyn Kellett

Vice Presidents -

Pam McLeod and Pamela Coles

Minute Secretary - Patricia Shaw

Treasurer - Pamela Coles

Publiciy Officer - Pamela Coles

During the meeting our Illawarra Regional Representative, Sandra Water, D.O.M. Karon Stilgis and two numbers of staff joined us and thanked us for our support for the hospital. We are very pleased that we have been able to purchases items for the hospital totalling nearly \$13,000 during last year. These items are greatly appreciated by both the staff and patients because they make

thing better, faster and more comfortable for all which is the reason we work so hard at our fundraising.

After our A.G.M. we had a very enjoyable afternoon tea supplied by the hospital. All in all it would be great if we could have some new members to help so think about it. We can we fun even at work.

Our next function will be our Father's Day Street Stall to be held on Saturday 2nd. September in Broughton Court. Next year we will be having our main annual fund raising with our Book Stall sale. If you have any spare books we can sell, you are free to leave them with me at any time. Remember, even as we do various fundraisers, the Book Sale is our main yearly item.

Don't forget, our meetings are held on the second Monday of each month at the hospital, commencing at 12.30pm with a light lunch. We would love to see you and I am sure you would enjoy the work we do for the hospital.

Pamela Coles Publicity Officer

SOMETHING TO
THINK ABOUT

LIFE IS LIKE MATHS.
OUR MEMORIES AND LEARNING
EXPERIENCES ALL ADD UP.



NEW TRAINS COMING TO OUR REGION

Parliamentary Secretary for the South Coast Gareth Ward and Member for South Coast Shelley Hancock today announced that the next generation of regional trains will be coming to our region.

Mr Ward said that the new regional fleet will replace the existing XPTs, Xplorers and Endeavours operating on the NSW TrainLink network. This network currently carries customers between Sydney, Canberra, Melbourne and Brisbane, while travelling through a number of major regional Stations including:

- Gerringong, Berry and Bomaderry (Nowra); and
- The Southern Highlands, Goulburn

"Passenger trains have long provided links between regions and the cities," he said.

"Whether it is to do business, get specialist medical treatment, or to visit far-away loved ones, train travel has always played a critical role in our country communities.

"The older trains have served us well, but they are nearing the end of their days and this next generation of regional trains will provide a real boost for our region," Mr Ward said.

Mrs Hancock said: "Customers in regional NSW deserve a significant improvement to the rail service which undertakes about one million customer journeys each year. By mid 2030s, we are expecting enormous growth with an additional 600,000 people moving to regional NSW – the new fleet will support population growth in country areas such as the South Coast.

"The NSW Government will soon issue an Expression of Interest for the design, construction and maintenance of the new fleet," Mrs Hancock said.

"This announcement signals the depth of our commitment to rural and regional communities by ensuring that services that deliver for country areas are supported by long-term skilled jobs, including apprentices and traineeships, in country areas," Mr Ward concluded.

**MEDIA: Gareth Ward 0401 499 933 or Ben Blackburn 0423 466 358 or Brigid O'Bryan
I Office of Shelley Hancock
I 0408 681 294**



Are you interested in your well being?

With study from the Australasian College of Nutritional and Environmental Medicine and study in oriental medicine, Mary can help from different perspectives to treat the whole body.

Wholebody Physiotherapy provides treatment for...

- Headaches, back and neck pain
- Gaitscan for foot assessment/orthotics
- Biomechanical postural assessment • Exercise prescription/pilates emphasis
- Incorporating traditional Japanese acupuncture and Shonishin

Now stocking kumbucha and coco-kefir for improving your beneficial gut bacteria.

Also in stock Mosiguard

**Downstairs, 84 Queen Street Berry NSW 2535
Open Hours: Mon, Wed-Fri 8:30am to 5:30pm**

4464 2874

Ray White Berry

RayWhite



Belinda Zoumis
Sales

Hayley Banks
Admin

Jessica Watters
Sales

Cherylee Elliott
Sales

Michelle Harris
Property Manager

Shane Hilaire
Principal

Did you know?

Ray White Berry Principal Shane Hilaire has been actively involved in the Berry region since 1992. During this time, continuous support of the Berry community through participation & sponsorship of many local groups.

An individual office investing in the community today with annual commitments to:

Rotary Club of Berry

Magpies RLFC

Berry Shoalhaven Heads Junior RFC

Berry Hockey Club

The Berry Show Society

Shoalhaven Heads Golf Club

Berry Small Farm Field Days

Berry Women's Touch

Shoalhaven District Tennis Association

Berry Riding Club

Meals on Wheels

Property Matters

When it comes to selling your most important asset, choose the Ray White Berry team who has the experience and majority market share despite market changes.

Some important news:

- From July 1, sellers of property over \$750,000 will have to show they are an Australian resident by obtaining a "clearance certificate" from the ATO.
- From 26 July, written notice for putting up the rent, notifying access for an inspection, or to terminate a tenancy agreement can be served by email.
- Premier Gladys Berejiklian announced a long awaited housing affordability package which starting July 1 will scrap stamp duty on first home buyers on existing and new homes up to \$650,000.

Testimonial of the Month:

"A magnificent job under ridiculous circumstances. Resilient right to the end. You went above and beyond from day 1 to closing out the deal".

Roger

KNOWLEDGE / EXPERIENCE / INDIVIDUAL / PERSONALISED

TRADES & SERVICES DIRECTORY

Canine Cardio

Dog Walking & Animal Home Care

Dog Walking | Pet Minding | Doggy Daycare | Overnight Stays

Annette Brooker

0418 427 438

info@caninecardio-homework.com.au
www.caninecardio-homework.com.au



Television Antennas SHOALHAVEN ANTENNAS

Servicing Berry and surrounding areas.

- Digital Upgrades
- New Installs
- TV Tuning
- Repair existing systems
- Add Phone/TV Outlets



Phone: 0410 526 672
Fax: 02 4422 6672

gerringong physiotherapy
nowra central physiotherapy
shell cove physiotherapy

4234 4666

www.gerringongphysio.com



Mountain Echo Landscape & Horticulture

- Landscape Design & Construction
- All Aspects of Garden Maintenance
- Fruit & Veg Production
- Broad Acre Property Management

Katie 0424 236 235 Ryan 0409 743 828
contact@mountainecho.com.au

Mark Collins

Lawn Mowing Service

Domestic & Commercial

M: 0401 571 228

Fully Insured
ABN: 36 646 587 820

P: 4423 6448 e:markneidi@optusnet.com.au



~ Specialising in gentle, low force techniques ~

SAFE, EFFECTIVE TREATMENT FOR:

- All ages; from babies through to the elderly.
- Headaches/migraines
- Back/neck pain
- Postural problems
- Whiplash
- Scoliosis
- EFTPOS available
- HICAPS now available

57 Queen Street • Phone: 4464 3414

- QUALIFIED HORTICULTURIST
- GARDEN MAKEOVERS & RESTORATIONS
- GARDEN MAINTENANCE
- GARDEN DESIGN & ADVICE
- REGULAR LAWN MOWING & EDGING



HATHAWAY GARDENS

WE SERVICE BERRY, GERROA, GERRINGONG, KIAMA & SURROUNDING AREAS

Phone Lawrie Hathaway 0411 888 333

Ian's Interior Linings



- ★ All plasterboard & fibrous plastering

- ★ Commercial & Domestic

M: 0418 220 751

E: willey63@bigpond.com.au

AIS CERTIFIERS

FAST TRACK
BUILDING APPROVALS

SWIMMING POOL
COMPLIANCE CERTIFICATES

TONY LEWIS

0417 372 728 • 4421 0004

info@accreditedinspectionsservices.com.au

THE BOUTIQUE GYM

Personal Trainer Jen Miller

117 North Street,
Berry NSW 2535

☎ 0413 648 943

jenmiller65@hotmail.com



ELECTRICAL CONTRACTOR

Licence Number 270316c

Domestic
Industrial
Commercial
Phone, Data and TV
Install and Repairs

Greg Kelly
0487 093 173

All aspects of your electrical needs

Four Legged Friends PET FEEDING SERVICE

For Horses, Dogs, Cats, Birds
& all other domestic pets

Megan White
dip in animal care

0407 407 328

whitewolf99@bigpond.com

Established: 1995

- FEEDING • EXERCISING • RUGGING
- GARDEN • MAIL • GARBAGE

www.fourleggedfriends.com.au



TANNED HIDES, BERRY NSW COW HIDES

PROFESSIONALLY TANNED HIDES AVAILABLE
YOUR HIDE OR CHOOSE FROM OUR RANGE

PHONE 0409 444 081

All enquiries welcome • www.tannedhides.com.au

All Australian • All Authentic • All Unique

HAMILTON EARTHMOVERS

Excavator

Bobcat

12 Tonne Tipper

Cut & Fill

Footings

Auger Drills

Rock Grabs

Rubbish Removal

Road Bases



Ph: 4464 1531

Wayne

0424 399 094

NATHAN GOODSSELL HANDYMAN SERVICES

ABN 98 784 116 262

- REPAIRS
- MAINTENANCE
- FREE QUOTES
- LOCAL

0413 247 977 - 4234 0495

'No job too small'



TRADES & SERVICES DIRECTORY

Vaughn's Lawn & Garden Service



- Local knowledge
- Professional service
- Fully insured

0408 863 776

www.vaughnsgardening.com.au

Graeme Todd-Wilson
0411 268 156



Lic. R62966

40 Years experience

Wallpaper

Hanger

TERMITES!

- ▼ Pre purchase termite inspections and reports
- ▼ Termite barriers new & existing buildings, council approved
- ▼ Thermal imaging and microwave inspection tools
- ▼ Termite Baiting Systems

FREE QUOTES Call
TERMITE SOLUTIONS-
4448 5444
termite experts

Fully Licensed, Accredited & Insured
Family Business with over 20 years experience

PROPERTY MAINTENANCE HOME HANDYMAN

- Repairs and installation of doors/windows/gates and fencing
- Small extensions - decks/pergolas
- Tipper Hire
- Clean ups - rubbish removal
- 40 years' experience
- Fully licensed

Michael Barrett 0408 217 637

BERRY MAINTENANCE PLUMBING

ALL PLUMBING SERVICES
Gutters Hot Water Toilet Repairs Leaks

Paul Bramley Licence L5826

Mobile: **0438 641 046**

Office: 02 4464 1312

MY CERTIFIER

BUILDING CERTIFICATION

Construction Certificates, Complying Development Certificates, PCA Services, Pool Compliance, Basix Certificates, DA Assistance & Building Consultation

Che Leonard BPB1812

0417 593 496

Email: che@mycertifier.com.au

www.mycertifier.com.au

G.M. Ellison & Co. lawyers • conveyancers

Graham Ellison LL.B.

- Real Estate & Business Conveyancing
- Wills, Probate and Personal Arrangements

5 HOST PLACE BERRY

Ph: 4464 3814 / 0408 444 808

graham@gmellisonlawyers.com.au

HERE IS HOW TO GET THE BEST KITCHEN,
VANITY, FURNITURE, TIMBER WINDOWS,
DOORS, FLYSCREENS AND JOINERY

Rybrook Joinery

CALL SCOTT OR MICHAEL

4422 4600

MICHAEL HILL PAINTER & DECORATOR

Quality Work Guaranteed

Domestic Commercial Industrial

ABN 95 969 204 488 Lic No 121389C

0402474569

- Specialising In
- New/Old work
 - Feature Walls
 - Roofs
 - Texture Coating
 - Heritage

Handyman

HONEST - RELIABLE - INSURED

Specialising in: Painting, Plastering.

Home Maintenance, Pressure

Cleaning, Flyscreen Replacement

Selling or renovating your home?

Good Advice & Free Quotes

CALL COL WHITEHURST

0400 135 128



WINDOW
& GUTTER
CLEANING
HOUSE
WASHING

CALL JAMIE
FOR FREE
QUOTE

0413 582 948

PROMPT. RELIABLE SERVICE



Electrician Seven Mile Electrical

A local service for jobs big or small

Call James on

0438 256 999

sevenmileelectrical@gmail.com



SOUTH COAST
COLOUR
of Berry

Colour and Interior
Decoration services.

Call Asha Ardill on
0423 820 370

www.southcoastcolour.com.au
asha@southcoastcolour.com.au

- Experienced in both residential and commercial sectors.
- Locally based, nationally accredited.
- Every job is approached with fresh eyes and new concepts.
- Finalist in Miele's "Forever Better" 2016 residential design competition.

Gerrington Painting Service

Lic: 186465C

- New & Repaints
- Interior & Exterior
- Small Jobs Welcome
- 30 Years Trades Experience



GREG DENT 0438 637 141



MISS SPARKLES SHOALHAVEN External House Cleaning

HOUSES FROM \$148

- ★ Environmentally Friendly
- ★ House/Driveway Packages
- ★ Removal of Cobwebs
- ★ Patios and Driveways
- ★ Mildew Treatment
- ★ Windows/Screens included
- ★ Commercial work
- ★ Seniors Discount

Phone Dennis for a free quote:
0407 642 256

Now Offering: Internal Window Cleaning &
Licensed/Insured Electrical Work (Lic No. 209514C)

TRADES & SERVICES DIRECTORY

CKB CIVIL

All Earthworks
Landscaping
Driveways
Rural Roads



Charlie 0418 429 740
charlie@ckbcivil.com.au

Lic 244729c



Chimney Sweep Wood Fire Installation and Maintenance

Servicing Berry for over 25 years Locally Run
Family Business - Specialising in all your
Wood Fire Needs - Licenced, Insured,
Professional & Clean.

Contact Russell: 0412 241 557 / 4464 1557
Or Luke: 0413 737 316
Lic No L7020

Support locally owned businesses.



Computer Troubleshooters

TECHNOLOGY SOLVED

- Residential or Business we come to you.
- Hardware and software repairs and sales.
- Networking solutions.
- Over 20 years' experience.

0422 227 456
www.ctsnowra.com.au

LOCAL SERVICE - GLOBAL STRENGTH

Glynn's Carpentry

YOUR HOME IS IN GOOD HANDS

Maintenance, Repair & Renovation Specialist

"I can help with those odd little jobs that
never seem to get fixed or a bigger project
like a new kitchen or bathroom"

Lic # 218008C

For a friendly free quote - Glynn 0423 384 072

MARK FOX TILING

- Floor Screeds • Waterproofing
 - All interior and exterior wall and floor tiling
- Pool water lines and complete pools

With over 25 years' experience
in the construction industry I have the
solution to all your tiling needs.

Call 0481 297 087
FOR YOUR FREE QUOTE TODAY
Licence No 304070C



Curran Plumbing

PLUMBING AND PIPE RELINING

Local Plumber
Fast & Reliable 24/7

1300 792 082

www.curranplumbing.com.au

10%
OFF
IF YOU
MENTION
THIS AD



Southern Tree Service

- Qualified Arborist
- Qualified Horticulturist
- Tree care and maintenance
- Expert trimming and tree removal in confined areas
- Chipper • Mulch
- Advice on replacments
- Stump Grinding
- Fully Insured

Paul Gillen

Ph/Fax 4464 2822 • Mobile 0407 405 968

ELECTRICAL CONTRACTOR

EEPS
Lic. No. 133674C

DOMESTIC & COMMERCIAL
Solar Power Installation
Home Automation Systems
Security Lighting
Pools & Spas
Hot Water Systems
Oven & Stove Repairs
Safety Switches
Smoke Detectors

Contact peter today!
0412 594 907 | 4464 1993

ENDEAVOUR ENERGY AUTHORISED LEVEL 2 SERVICE PROVIDER



LOOK MOBILE MECHANIC LOOK

AND MACHINERY TRANSPORT

- LAWN MOWERS
- TRACTORS & MACHINERY
- LIGHT TRUCKS
- 4WD & UTEs

0414 800 359

GREG LYNCH MOBILE FARM SERVICE



Dwell SOUTH COAST

decorate • colour • style

Mindful **colour** specifications for inside + out

Home styling + **decorating** advice

Selection of **fixtures, fittings + finishes**

Sourcing furniture + artwork

Chat to Tonya 0447 186 105

www.dwellsouthcoast.com.au



All Timber Repairs

Building and Carpentry Services
Pre Home Sale Improvements

Martin Tansley
02 4422 9048

0404 639 132
0458 969 100

We specialise in

- Pre Home Sale Improvements
- Privacy Screens
- Timber Stairs
- Replacement and Improvements

- Decks
- Verandahs
- Handrails
- Much more

www.alltimberrepairs.com.au

Lic No. 217793C

ABN 37 130 793 024

Roof & Building Repairs

Roof Leaks

Leak Detection

Moisture Problems

0415 997 977

Info@benchmarkbuild.com.au



ROB PACKER POND & DAM CARE

- Algae & weed control
- Pumps & filtration
- Fish & plants
- Maintenance & repairs

0409 550 741



MORROW BUILDING PTY LTD

TOMORROW'S FUTURE BUILT TODAY

SPECIALISING IN BUILDING

- Homes
- Duplexes
- Multi Units
- Renovations

IN BERRY AND SURROUNDING AREAS

e sales@morrowbuild.com.au

w www.morrowbuild.com.au

p 0413 887 042 Licence 292189c

ESTABLISHED 1888
BERRY HOTEL

Oktoberfest

15th - 17th September

2017

FRIDAY NIGHT

tapping of the kegs
strongest man and woman competitions
live entertainment with Dan Spillane
great German menu : German beer on tap

SATURDAY NIGHT

Oktoberfest dinner show with
live German dancers and musicians
strongest man and woman competitions
3 course German menu with 1/2 stein beer

SUNDAY FAMILY CELEBRATION

live German dancers and musicians
magic show : jumping castle for the kids
German menu and more!



**BOOK
NOW**

Sunday Night Trivia

**Sorry,
in September we're taking a break,
but trivia will return in October.**

every FRIDAY night tickets ON SALE from 6.00pm

CASH JACKPOT RAFFLE



**Must be WON
on Sept 15th!**

Supporting
**BERRY HOCKEY CLUB
and
BERRY SHOALHAVEN
HEADS CRICKET CLUB**
LTPS/16/07286

Katandra

Join us on Friday evening, September 22nd
commencing 6.30pm for a performance of this
newly formed a capella women's choir.

Comprised of local women aged 14-70, this
accoustic group will perform without instruments.
Katandra Women's Choir

LIVE MUSIC LINEUP

SEPTEMBER

FREE

Friday 1st: DJ ELDRED
Saturday 2nd: WOODY
Friday 8th: RICH
Saturday 9th: SHAUN THE SHEEP
Friday 15th: DAN SPILLANE

Saturday 16th: OKTOBERFEST
Friday 22nd: MELTDOWN
Saturday 23rd: THREE AMIGOS
Friday 29th: DAN SPILLANE
Saturday 30th: DAN SPILLANE

120 Queen Street, BERRY www.berryhotel.com.au
p. 02 4464 1011 f. 02 4464 2142 e. info@berryhotel.com.au



facebook.com/TheBerryHotel



[@theberryhotel](https://twitter.com/theberryhotel)



Smartphone App

TAB

Restaurants . Functions . Accommodation . Live Music

RESPONSIBLE SERVICE OF ALCOHOL AND GAMBLING

OFF-STREET PARKING FOR PATRONS AT THE REAR OF THE HOTEL

