

NOVEMBER 2013

\$3.00

Town Crier

PO BOX 202 BERRY NSW 2535

www.berryalliance.org.au

Community Forum on Infrastructure Priorities in Berry

The Community Consultative Body's upcoming AGM was featured in last month's Town Crier but to inform local residents about the importance of this upcoming meeting, we thought it best to remind you of the issues that will be raised:

As a result of the Council Rate increase this year Council stated "The increase is estimated to provide Council with an additional \$2.3 million, all of which would be exclusively allocated towards road and path renewal in 2013/14 (\$1.8 million on roads and \$500,000 on pathways).

The Media Release (below) identified the allocation this year (2013-2014) and there was no allocation to any items in Berry. As this rate increase will also provide a similar amount of increased funding for these items in future years our community need to identify our infrastructure needs and put these to Council for consideration.

Our November Community Forum will have this as our topic.

Community Consultative Forum 6.30pm Thursday 7th November Berry Courthouse

Please consider, identify and discuss your views on these infrastructure needs with friends and family and come along to the Forum to participate – hear others points of view, put your ideas and views etc.

This Forum will also have the election of CCB Officers for the 2013-2014 year as the first item of business.

Council Media Release earlier this year:

"Council moves to increase General Rates

Shoalhaven City Council will increase General Rates by 4.6 percent above the rate pegging limit (3.4 percent) in the 2013/14 financial year.

The decision follows the Independent Pricing and Regulatory Tribunal's (IPART) approval of Council's application for a special variation rate rise to help fund infrastructure renewal.

The increase is estimated to provide Council with an additional \$2.3 million, all of which would be exclusively allocated towards road and path renewal in 2013/14 (\$1.8 million on roads and \$500,000 on pathways).

Mayor, Joanna Gash said she was very pleased Council chose to accept the rate variation saying the additional funding would allow Council to start tackling the area's infrastructure backlog.

While pleased to see the commencement of road renewal and path projects in the coming financial year, Mayor Gash cautioned that it will take many years to overcome infrastructure backlog works of \$37 million.

"Council has made a commitment to bring the area's road and pathway network up to an acceptable standard," said Cllr Gash.

"The additional funding received from the rate variation will allow works to be undertaken on a number of critical projects within the coming financial year, "Days like today, when the area is subject to heavy rains, reinforce the need for road rehabilitation works across the city to minimise cases of further degradation and flooding of road surfaces."

Funding from the special variation rate rise will be allocated towards the following road renewal projects -

- Currarong Road (5.6km to 6.8km from Coonemia Road) - \$624,000
- Jindy Andy Lane (0.0km to 0.7km from Comerong Is Road) - \$364,000
- Quinns Lane (0.4km to 0.8km from Princes Highway) - \$512,000
- Lake Conjola Entrance Road (within tourist park) - \$200,000
- Orsova Parade - \$100,000.

Funding from the special variation rate rise be allocated towards the following path projects -

- Woollamia Road (community) path - \$200,000
- Princes Highway (south of Canberra Crescent) path - \$90,000
- Berry Street Nowra CBD path - \$210,000

Shoalhaven City Council "

Following this article in the Town Crier the Berry Alliance noted: "Berry Alliance says: You will note that the projects listed do not include anything in Berry. This list is for the 2013-2014 financial year. We will be holding a Community Forum in September or October on the topic of identifying roads and pathways that our community would like to see included in the program of improvement that is to be funded by this special increase in rates. Once identified these will be put to Council with a request that they be included in the program."

SCC's Assets Manager, Martin Uptis will be asking the following questions: What would your community like to see done with the rate rise increase? This year it has been assigned to roads and paths, but ideas are encouraged for the following year.

Martin Uptis to attend the following month and asks Berry residents, in addition to the above question, what issues could be raised in the community? This will be discussed at November's Forum. In particular, issues regarding existing infrastructure e.g. Council buildings, parks, aquatic services, roads, drainage. How well do these things operate? Are these amenities are fit for their purpose?

This Forum has now been listed for November 7th. Please come along.

Berry Alliance and Community Consultative Body



Town Crier

Inside this Edition

Remembrance Day Details	Page 2
Parenting Workshop	Page 4
Berry Show	Page 5
Berry Great Fete	Page 21



Berry Preschool
Celebrates its

25th Anniversary



The Town Crier Information

The Town Crier is produced by the Berry Alliance, Inc.

The purpose of this publication is to communicate to the people of Berry about community activities and to generate a small income for the Berry Alliance to cover administrative costs.

MEMBERSHIP

Membership of the Berry Alliance costs \$10 pa. It aims to share information amongst community groups and individuals, and to ensure that Berry continues to be a community we are proud of.

Membership is open to Berry community groups and individuals.

To join the Berry Alliance, write to PO Box 202, Berry NSW 2535

CONTACT DETAILS:

ALL TOWN CRIER ENQUIRIES:
0428 037 572

towncrier@berryalliance.org.au

ALL BERRY ALLIANCE ENQUIRIES:
Secretary: 0449 569 059

Email: info@berryalliance.org.au

Post Office Box 202, Berry NSW 2535

BERRY ALLIANCE EDITORIAL BOARD

Rick Gainford
Sharon Dunn

Jennifer Clapham
Nancy Davies

Contributors are those from the Berry community who have news or views relating to residents of the area. The opinions expressed in the Town Crier are not necessarily those of the Berry Alliance or the Editor. The Town Crier is published every month, with a circulation of 2300.

PRINTED BY **Berry Printers**

CONCORDE WAY BOMADERRY PH: 4421 0569

PRINTED ON RECYCLED PAPER

BERRY RSL REMEMBRANCE DAY COMMEMORATION MONDAY 11TH NOVEMBER

The Berry RSL will be conducting this year's Remembrance Day Commemoration Service at the

Berry Memorial Park
on
Monday 11th November

Commencing at
approximately 10.40am.

After the service refreshments
will be available at the
RSL Hall.

Serving Defence Force
members and Veterans and
the community are particularly
welcome; wear medals.

**For further information, contact
the RSL Sub-branch secretary,
Stuart Christmas at
0413 051 003.**

Editor's Note...

The closing date for our
DECEMBER issue will be
Wednesday 13 NOVEMBER

NOVEMBER
13

Please submit prior to this
date if it is your first submission.

Material can be submitted via e-mail to:
towncrier@berryalliance.org.au or drop box
in the Berry Post Office PO Box 202 Berry 2535,
Phone 0428 037 572. For subscriptions contact
the Editor or visit <http://www.berryalliance.org.au/subscription.html>

Nancy Davies - BERRY TOWN CRIER



Small Office/ Room to Let BERRY COURTHOUSE HAS A ROOM TO RENT

Beautiful setting, ample parking and an
historic building and you will be assisting
the Berry Courthouse and
Museum Conservation Committee protect
and preserve a wonderful
historic building.

Enquiries to
functions@berrycourthouse.org.au
or telephone 0458 369 266.

Grime Control Window Cleaning

is soon to Celebrate 20 years
in the Shoalhaven
from Berry to the Basin.

Paul and his two daughters Melinda
& Michelle are Reliable - Honest
- Trustworthy and are now expanding
their Sister business Warratah Cleaning
services to include house and end of
lease cleaning.

Please contact

4448 5335 or

0400 771 396

grimecontrol@hotmail.com



new gallery for berry

We already have a great collection of works by local
artists; you will be amazed at the talent
we have on our doorstep.

Come in and experience this new gallery for art, sculpture,
ceramics and jewellery.

YOU WILL FIND US IN

Shop 2, 68 Albert Street - Open 10am - 4.30pm

Closed Tuesday & Wednesday
T: 4464 3088 M: 0416 181 543



CCB Forum

Berry's Community Consultative Body received the following letter from Development Services Manager, Robert Russell. It was in direct response to a number of issues raised at the last CCB Forum by community members present.

Dear President

Thank you for your invitation to attend the Berry Alliance meeting last Thursday evening to clarify some aspects relating to the operation of the Berry Markets.

During the course of the meeting, some people in attendance raised issues in regard to certain local people not being permitted to have stall sites at the market; that the BCAC are not open to new members and that the profits of the markets are not distributed amongst local groups or services. Most of what was raised involved management issues which, if deemed appropriate, need to be sorted out through the management committee of the showground ie. the Hazelberry and David Berry Parks Management Committee (the Committee). This Committee has been formally appointed by Council and acts as the Council in the management and running of the Showground.

It is the Committee who hires the showground to the BCAC to conduct monthly markets. Any concerns about the management and running of the markets should be discussed with the appointed Committee and preferably, in the first instance, directly with representatives of the BCAC. Some form of mediation with the BCAC and the Committee could resolve your member differences.

At the Alliance meeting, I impressed upon the gathering that the development consent runs with the property - not the applicant ie. BCAC. Although, there could be some legitimacy to the BCAC's claim for first preference to run the markets as they have done so successfully for the last 23 years.

Some members wanted to know why the application was not notified to the community. I explained that the application was not a development application as suggested by some members at the meeting but, rather, a s96 modification proposal. The recent extension for five years was based on the fact that, over the last three years or more, there has been no development related complaints received by the Development & Environmental Services Group of Council to the operation of the markets. Therefore, in accordance with Council's Community Consultation Policy (on page 27) it states that where such applications are for an extension of time to a market and there is no history of complaints in relation to that market (as was the case here) then, the application is not to be publicly notified. The s96 application for the market is classified in the Policy as a "modification involving minimal environmental impact" and, as such, extending its term of operation

is categorised as not requiring public notification. This is why the extension of the term of operation of markets from the showground was not publicly notified.

The s96 application process for the continuing operation of the markets cannot be used to negotiate management issues with the BCAC. This would be a most improper and inappropriate use of the planning system. In processing the s96 modification application, Council is merely stating that the showground is a suitable place to conduct markets provided certain planning related requirements are met. If there are issues related to the management of the markets then, it should be rightfully taken up with showground management (the Committee) and the BCAC. The approval of markets at the showground is not specific to any one group and ultimately, the Management Committee decide to whom they hire the showground for the purpose of markets.

I hope this information clarifies Council's position in relation to the on-going operation of the markets.

**Kind regards - Robert Russell
Development Services Manager
Planning and Development Group
Shoalhaven City Council**



Berry Acupuncture Pain Clinic

Shop 2/78 Albert Street Berry
(in carpark behind IGA)

OPENING NOVEMBER 11TH

**A brand new clinic is opening in Berry treating chronic and acute pain using
Acupuncture and Chinese herbal medicine.**

Proprietor is Anita Binnington with over 23 years clinical experience is well known to Shoalhaven residents.

Open 6 days per week Monday - Saturday

By appointment and walk ins

Call Anita Binnington on 0412 932 460

**Anita and her associates all have University Qualifications and National Government Registration,
we are covered by all Health funds. Hicaps and Eftpos available.**



Berry Red Cross

During September our Branch received some correspondence from Australian Red Cross relating to a subject which unfortunately continues to be part of the world we live in, War. As you would be aware, Red Cross is very much involved in Wars, Laws and Humanity. We received the International Humanitarian Law Update and as a Branch we agreed it would be appropriate to share this with the Community.

'Australian Red Cross urges people to join the campaign to ban the use of nuclear weapons. Australian Red Cross is stepping up its campaign to ban the use of nuclear weapons, calling on people around the country to share videos and photographs of something they love, so we don't forget what's at stake.'

People can go to nextstep.

targetnuclearweapons.org.au to join the campaign. Their collective voice will be used to help Australian Red Cross to advocate with government and influential people around the world.

The 'Make Nuclear Weapons the Target' campaign highlights the unacceptable humanitarian and environmental consequences of nuclear weapons and calls on Australians, particularly young people, to finish what their parents started.

More than 50 years after the anti-nuclear debates of the 1960's and 70's, the threat of nuclear weapons still hangs over us,' said Australian Red Cross CEO Robert Tickner. 'An estimated 17,000 warheads remain in existence, with the number of States possessing such weapons steadily increasing.'

'The use of even a limited number of nuclear weapons would affect the environment for decades, and render agriculture impossible in vast areas, most likely causing mass starvation and disruption of global food distribution.'

'The time has come for us to make a stand against nuclear weapons. Following the adoption of an historic resolution in Geneva, the Red Cross and Red Crescent Movement is calling for States to ensure nuclear weapons are never again used, and to create laws to prohibit their use and to aim for their elimination.'

The latest step in the ongoing Australian Red Cross campaign follows a successful social media referendum, where people voted online to show their support for a ban on the use of nuclear weapons.

Red Cross took the view of Australians to an International Red Cross meeting in Geneva, and returned with the historic resolution, called 'Working towards the elimination of nuclear weapons'.

The resolution has already been used by Red Cross and some governments around the world to highlight the humanitarian consequences of nuclear weapons.

'Australian Red Cross could not have made this progress without the overwhelming support from people all around the country,' Mr Tickner said. 'We need that ongoing support as we continue the campaign to ban the use of nuclear weapons.'

'Through the power of social media, we are asking people around the country to have their say, and help us remind the world what's at stake.'

Show how much you care by going to nextstep. targetnuclearweapons.org.au and share a photo or short video of the one thing you'd miss most if your world was destroyed by a nuclear bomb.'

**Sandra Eldridge - Hon Secretary
Red Cross-Berry Branch
Phone: 4464 2612**

Mainly Music runs parenting toolbox



This term Mainly Music is running a 'Parenting Toolbox' course for parents from Mainly Music and those within the wider community. The Toolbox parenting courses have been developed by Ian and Mary Grant from New Zealand; authors of 'Growing great families', 'Fathers who dare win', 'Growing great marriages' and more.

Parenting Toolbox is about equipping parents with a range of 'tools' to help parents, parent with confidence and really enjoy their child's early years. The most important years in your child's development are these early years and no-one will have more influence on a child's future than their parent.

Jodie Dearsley and Erica Noonan from Mainly Music will host the next course for parents of children 0-6 on Friday nights 7.30pm for six weeks. It includes a comprehensive manual, 'experts' on video and lively interaction. Participants appreciate the opportunity to listen to someone else's experience and realise that we all face similar issues and challenges.

The six sessions include parent types, development stages, tools for engaging cooperation, discipline, making memories and being the parent your child needs. Our hope is that by the end of this course you will have the skills to set appropriate boundaries for your child and develop a strong and loving bond with them.

Mainly Music is a time of music, play and morning tea for children 0-5 and their carers Tuesday mornings (10am) during school term. It aims to provide a support network to parents during these crucial years. It runs on Tuesday mornings 10-11.30am during school term at Berry Community Church, 34 Alexandra St Berry.

For more information on Mainly Music or Parenting Toolbox contact Erica Noonan on 0402 699 732.

THINKING OF SELLING?

For your **FREE** copy of the
'How to Get the Highest
Price for Your Property'
booklet,
contact
Dominic
Mandile
on
0418 409 987



firstnational REAL ESTATE Simon Mandile

35 Firth Street, Arncliffe, NSW, 2205 ☎ 02 9556 1388

dominic@simonmandile.com.au



Berry Community Church

We meet at 34 Alexandra st Berry

Sunday service times 930am & 5pm (kidz church)

Activities include Mainly Music, Berry Youth and Homegroups

For further information www.berrycommunitychurch.org
brendan@berrycommunitychurch.org (02) 4464 2315

A member of the Baptist Churches of NSW & ACT

Bringing life to the southcoast and the nations

BERRY SHOW SOCIETY

The **126th Show** is in full preparation for 31st January and 1st February 2014. Time to get those projects finished ready for the Show.

A few changes to our usual programme: The **Beef Cattle** will be displayed and judged on Saturday. This should allow greater participation of local graziers that have other work on weekdays. The **Dairy Cattle** will still be on **Friday**, also allowing extra room for greater numbers. **Entries closing on Tuesday 28th January 2014** at the Office by 5pm for both **Beef and Dairy Cattle**.

The **Pavilion** format has changed with most judging being held a day earlier. Entries by Monday 27th January 2014 for the following: Needlework, Knitting, Three Wool Garments, Tapestry, Spinning and Weaving, Craft, Woodwork, Pottery, Jams Jellies and Pickles, Art, Porcelain Painting, Porcelain Dolls and Photography. Entries by Tuesday 28th January 2014 for the following: Farm

Produce, Dairy Produce, Fruit, Vegetables, Plants, Cooking, and Junior. Entries by Wednesday 29th January 2014 for the following: - Flowers, Cut Blooms and Dahlias. They are the deadlines closing at 5pm but don't leave it to the last minute: **Entries are taken every day through January before the closing date.**

The **Horse Section** to be entered by computer on Global by **Monday 27th January 2014** with little change from last year.

Members who are financial will have received their Show Schedule and wrist bands by 10th November 2013. From the beginning of December, Show Schedules will be available at Nowra Tourist Information Centre, Potting Around, Berry and some other shops in Berry. Our website mid November at: www.berryshow.org.au will have the full schedule, able to be viewed or printed. Membership taken every day up to the two Show days,



Adults \$15 Children (UNDER 16yo) \$5 (payment, Name and address, children's DOB). Mail to PO Box 173 Berry 2535 or to the Office Tuesdays 2-4pm Tuesdays other times use the mail slot in the door. Remember, **Entries taken everyday through January** before the closing date at the Office 10am to 5pm weekdays or just put the form through the mail slot in the door.

See you at the Show,

Jim Bieler
Honorary Secretary
4464 1567

Miss Berry Showgirl 2014 – could this be you?

My name is Elle Davidson, I'm 22 years old from Coolangatta and I am the 2013 Berry Showgirl, sponsored by The Berry Tea Shop. The experience entails an interview, a luncheon, information days, a speech and the Showgirl Ball. At first I was rather nervous about the interview and speech component, but it gives you an opportunity to apply and develop yourself, and the whole experience is about being an ambassador for women, particularly women in agriculture. I do not come from an agricultural background, nor did many of the entrants for 2013, though we saw this as an opportunity to learn more, and to contribute to our local area.

It is the time of year again where girls aged between 18 and 25 as of 1 May 2014 are encouraged to become entrants in the Berry Showgirl Competition. I strongly encourage girls who are interested in this experience to take advantage of this fantastic opportunity. It was an incredibly character and confidence building experience, which I have valued deeply. You have the opportunity, with a bunch of great girls from your local area, to learn more about, contribute to, represent, and be more involved in your local community.

For any girl who is considering becoming an entrant, and for those who have any hesitations about it, I strongly encourage you to enter and experience it for yourself, and I guarantee it will be a rewarding and enjoyable experience. You will be left wondering what it would have been like having not taken up this opportunity!

The showgirl committee are now searching for entrants for the 2014 Berry Show. If you are interested in entering, please contact Pat Guthrie on m: 0412 521727 for more information. Each entrant must be sponsored by a district club, organisation, firm or individual and must reside in the local area. ENTRIES CLOSE SATURDAY 21ST NOVEMBER.



Miss Showgirl 2013 – Elle Davidson with proud sponsors Cliff and Paulina from the Berry Tea Shop



For all Your Musical Needs

30 Years Experience in the Music Industry
Musical Instruments and Accessories
Sheet & Print Music • Digital Sheet Music
Audio Equipment
CDs • Music & Movie DVDs • Music Giftware
Music & Movie Memorabilia • Vinyl (Records)

BOOKING AGENT - SHOALHAVEN ENTERTAINMENT CENTRE

BERRY MUSIC CENTRE
SHOP 1/118 QUEEN STREET, BERRY NSW 2535
4464 1284

berrymusiccentre@gmail.com
www.berrymusiccentre.com.au
[www.facebook.com / BerryMusicCentre](http://www.facebook.com/BerryMusicCentre)



'My Secret Sewing Days'

SEWING CLASSES

Located in a rural setting between Gerringong & Berry at Broughton Village, the studio provides modern machinery to help you create professional looking clothes easily.



Classes have now commenced on Thursday and Saturday afternoons from 1-3pm with new timeslots available on demand. Just bring along a project that you want to make and work at your own pace under Barbara's guidance.

Higher School Certificate textile tutoring is now available.

www.mysecretsewingdays.com.au

0408 624 623

BERRY BOWLING CLUB

CHINESE RESTAURANT

GREAT VALUE FOOD

Lunch

Wednesday to Sunday - 12.00 noon to 2.00pm

Dinner

Wednesday to Sunday - 5.30pm to 8.30pm

TELEPHONE: 4464 2388 - For Bookings & Take-Away

MELBOURNE CUP CALCUTTA

Monday 4th November, 2013

Club open at 4.00pm – Special Guest Panel
The famous Brother Gerry Phantom call

HUGE PRIZE POOL

Club open 11.30am MELBOURNE CUP DAY

RAFFLES

THURSDAY

Berry Fisho's Club Raffle -

Tickets on sale from 5.30pm – Drawn 7.15pm

FRIDAY

Club Raffle -

Tickets on sale from 6.30pm - Drawn 7.30pm

SATURDAY

Berry Cricket Club Raffle -

Tickets on sale from 6.30pm – Drawn 7.30pm

SUNDAY

Club Raffle - Tickets on sale from 6.30pm – Drawn 7.30pm

BOWLS

Berry Bowling Club
(02) 4464 2995

Ladies:

Tuesday & Thursday 9.00am

Mixed:

Thursday in uniform 9.00am

Men:

Wednesday & Saturday 1.00pm

Mixed:

Saturday 1.00pm

David Armstrong

President Men's Bowling Club
(02) 4464 1543

Carolyn Borland

President Women's
Bowling Club
0412 533 789

Berry Bowling Club
140 Princes Highway
Berry NSW **Phone: 4464 2995**



Shoalhaven City Village & Sea Pool opening hours



Shoalhaven City Council wishes to advise residents of the Village and Sea Pools opening hours for the upcoming summer season.

Mayor, Joanna Gash said Council provides the community with a host of different swimming options across the summer months.

The Mayor said that with the swim season to officially kick off on Saturday 2 November, local residents have a range of Village and Sea Pools to take advantage of.

"While the Shoalhaven is home to a wide array of picturesque and pristine beaches the area also houses a large number of Village and Sea Pools which remain open throughout summer," said Cllr Gash.

"These pools provide a fantastic option for those looking to have a relaxing swim, keep fit or stay cool with the entire family across the warmer months.

"I would certainly encourage all local residents to take advantage of these fantastic community resources throughout the upcoming summer."

Mayor, Gash said each of the Village Pools would maintain lifeguard supervision however the Sea Pools will remain unsupervised.

Pool hours include -

Village Pools - Berry, Greenwell Point, Shoalhaven Heads, Milton

School Terms

(Saturday 2 November - Wednesday 18 December 2013)

(Wednesday 29 January 2014 - Sunday 30 March 2014)

Monday to Friday: 7am - 11am and 2pm - 6pm

Weekends: 10am - 5pm

NSW Public Holidays: 1pm - 5pm

NSW Summer School Holidays

(Thursday 19 December 2013 - Tuesday 28 January 2014)

Monday to Sunday: 6am - 6pm

NSW Public Holidays: 1pm - 5pm

Kangaroo Valley Swimming Pool - School Terms

(Saturday 2 November - Wednesday 18 December 2013)

(Wednesday 29 January 2014 - Sunday 30 March 2014)

Monday to Friday: 7am - 12pm and 1pm - 6pm

Weekends: 7am - 6pm

NSW Summer School Holidays

(Thursday 19 December 2013 - Tuesday 28 January 2014)

Open every day: 7am - 6pm

NSW Public Holidays: 9am - 5pm

Sea Pools - Unsupervised - Huskisson and Ulladulla

School Terms:

(Saturday 2 November - Wednesday 18 December 2013)

(Wednesday 29 January 2014 - Sunday 30 March 2014)

Six days per week: 7am - 6pm

NSW Public Holidays: 7am - 6pm

Closed for Cleaning - applies all year

Ulladulla - Tuesday

Huskisson - Thursday

NSW Summer School Holidays

(Thursday 19 December 2013 - Tuesday 28 January 2014)

Six days per week: 6am - 8pm

NSW Public Holidays: 6am - 8pm

Hours of pool operation remain subject to climatic conditions.

All Centres are closed on Christmas Day.

Please direct all inquiries to Council's Aquatics

Hotline - 4429 3652 or website

www.shoalhavenswimandfitness.com.au.

Produce in the Park: A New Market for Berry

Spring 2013 has seen the launch of the Berry Produce Market in the heart of town. Held twice a month, the new market seeks to provide fresh produce grown, picked, or prepared and an opportunity for local producers to sell their goods. Community participation is welcomed.

The market is set in the park at Andrew Place, 102 Queen Street, behind the shops. Formerly the site of the garden centre, the park provides a lovely, relaxed atmosphere for locals and tourists to browse a range of stalls. Markets are held from 9am to 3pm on the second Saturday and fourth Sunday each month.

Stalls offer fresh fruit and vegetables; award-winning jams and honey; unique sauces and spice blends; homemade pies; fresh juices made on the spot; a large plant range, including seedlings, common and hard-to-find herbs, fruit trees, proteas, organic fertilizers, and much more. In order to provide the freshest produce, new and seasonal stalls are continually being sought.

The community is invited to visit the park on the second Saturday and fourth Sunday and like the Berry Produce Market on Facebook for regular updates and news.

Local producers are encouraged to enquire about reserving stalls on a seasonal or regular basis. Contact Tricia on 0425 842 909 or flowersallyear@yahoo.com.au

Introducing...

Berry PRODUCE MARKET

*come and discover
real produce from real producers*

*Second Saturday & Fourth
Sunday Every Month
9.00am to 3.00pm*

New & seasonal produce at each market

**Andrew Place Park
102 Queen Street Berry
(Behind the Shops)**

Find us on
Facebook

Come Along to

A NIGHT OF JAZZ / BLUES

and later evening 60/70's Rock'n'Roll to dance to!

*Featuring local band 'Mozaics' and
guest muso's organised by Graeme Chambers*

Where: Berry School of Arts

When: Saturday 30th November 2013 7.45pm - 11ish

Bring your own light supper & drinks

Bookings at Berry Tea Shop

Cost: \$10 per person, group / table bookings available

FOR INFORMATION CONTACT

Graeme Chambers at Graeme_Chambers@clc.net.au or 0466 466 122

Spring into Summer

BERRY

TRADERS

We carry a large stock of Antiques, Collectables & Homewares that is constantly changing.

Leather Furniture Range.

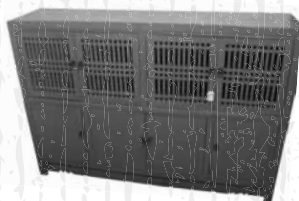
Our leather range of furniture is continuing to prove very popular. It is new furniture covered in Italian aged leather and looks and feels just wonderful!

1, 2 or 3 seater Chesterfields; Wing chairs, Club chairs; Aviator chairs; Cigar chairs. - and a host of others available including Ottomans and Foot Stools. Great look, feel and value!



Dining Tables, Chairs and Sideboards.

We have a wonderful range, either new, antique or pre-loved. A constantly changing range that includes popular regulars like our French Cafe or Cross Chairs of the highest quality. Our new French range of bedroom, hall and desk furniture is fantastic and great value as well.



Stools.

Metal stools, timber stools, stacking stools, adjustable height stools, folding metal chairs, stacking metal chairs and lots more.



Spring into Summer with our great range of teak, cane and patio furniture - something for everyone (and constantly changing).

We can deliver.

Follow us and like us on Facebook and check out our EBAY profile



49 QUEEN STREET BERRY
TELEPHONE: 4464 3846
Open Friday, Saturday,
Sunday & Monday.



"Enthusiasm finds the opportunities and energy makes the most of them" -Henry S Huskins

In the last issue the high standard of the work presented by the Berry Primary School was mentioned. In this November report we would like to take time to congratulate a number of students. Their work was exemplary and we applaud their energies and enthusiasm used to create wonderful works.

Prizes were awarded for the following:

Books	Tara Mustapic - 1st Ella Munro and Stephanie Mayle - 2nd Elisha Bell - 3rd
Posters	Izzy Yates - 1st Eliza Scullard - 2nd Pippa Callingham - 3rd Milly Thompson and Max Bricker - Highly commended
Power Point Presentations	Elisha Ball and Zara Podmore Maddy Dunn - 1st Lucy Leung - 2nd

Congratulations to Tara Mustapic as her book has gone to the next stage of judging which will be announced on 21st October.

Well done! to both students and teachers for the very high standard of work. We look forward to this afternoon each year.

Berry Public School is to be congratulated for gaining second place for their team in the Maths Engineering section of the NSW Tournament of the Minds competition, and congratulations to an enthusiastic student, Jackson Bamber who is the regional runner up in the Premier's spelling competition. What a great way to promote literacy in our schools.

Thank you for the support given to Berry Branch at their Garage and Boot Sale. Excellent results! And to top off the day the scones that were "hot out of the oven" just melted in our mouths and we could have said with Oliver Twist: "Please sir, may I have some more?"

Breaking news! Our next country of study will be The Republic of Botswana. Where is it? Well, somewhere in Africa, you say? It is in the Kalahari Desert, located south of the Equator. Some interesting information will be revealed in the coming days.

Berry Branch CWA held their Annual meeting, and the invited guest Mrs Margaret Smith AO, Past State and National President chaired our meeting. She urged us to keep up our ethos of hard work and our enthusiastic approach. "Hasten slowly and get it right" and we will achieve the goals that we set.

Congratulations to our newly elected leadership team:

Marie DeLa Torre	President
Sandra Berner	Honorary Secretary
Jeanette Dwyer	Honorary Treasurer

And to the other elected officers

DATES FOR YOUR DIARY

November 23rd -Christmas Street Stall, Broughton Walk, 8:30am
Christmas goodies, craft items, cakes, preserves. And the raffle winner will bag a quilt deftly done in shades of blue.

Jean Stanfield
Publicity Officer

For further information contact either Marie 44232164, Sandra 44642836, the CWA website at www.cwaofnsw.org.au, or the Secretary PO Box 321 Berry 2535



The new leadership team for 2013/14 Names from left to right Sandra Berner, (Honorary Secretary) Jeanette Dwyer (Honorary Treasurer) and Marie De La Torre (President)



FOR ALL YOUR POND AND DAM CARE NEEDS

Specialist in:

- Algae and weed removal incl. azolla, duckweed, salvinia
- Pond & dam renovation
- Pump & filtration systems
- Fish & aquatic plants

Using:

- Targeted, non-residual sprays that are safe for animals & aquatic life
- Tried & tested methods
- Follow-up and maintenance

Rob Packer Pond & Dam Care **0409 550 741**



Albert
Street
Berry



Berry Uniting Church

Phone: **4464 1034**

Email: minister@berry.unitingchurch.org.au

Sunday Celebrations: 9.30am

Rev. Dr. David Millkan

Groups & activities:

Bible study groups
Community Garden
Fellowship groups
Prayer groups
Men's Shed
Social Craft Group
Young People's Drama Club
Computers for Seniors

"To know Christ & make him known"

<http://berry.unitingchurch.org.au>

Berry Veterinary Clinic

A: 84 Queen St Berry P: 4464 1899

W: www.berryvet.com.au E: info@berryvet.com.au



"HERE FOR YOUR BEST FRIEND"

Monday - Friday:

8 - 6pm

Saturday:

9 - 12 noon

Sunday:

10-12noon

@ Shoalhaven Heads

FULL RANGE OF SMALL & LARGE ANIMAL SERVICES INCLUDING

- Xray
- Ultrasound
- Endoscopy
- Orthopaedic and Soft Tissue Surgery
- Dentistry
- Preventative Healthcare & Advice
- Puppy pre-school
- Grooming & style cuts + \$15 Baths
- Clinic in Kangaroo Valley
- Clinic in Shoalhaven Heads

NEW OPENING HOURS !!!!!

The clinic will now open between the hours of 8am and 6pm weekdays and 9am - 12noon on Saturdays, for consultation by appointment.

We are also available for consultation at our Shoalhaven Heads clinic on Sundays between the hours of 10am and 12noon.

Come and meet our growing team of 5 vets and 5 vet nurses: Dr Anthony Bennett - vet, Dr James Carroll - vet, Dr Bryden Krebs - vet, Dr David Ball - vet and Dr Geoff Manning. Trish Rosa - vet nurse, Kahlia Bugden - vet nurse, Emma Walsh - vet nurse, Amy Howes - vet nurse and Molly Barrett - vet nurse.



SHOALHAVEN POULTRY GROUP

Details of the next Auction

Venue: Berry Poultry Pavilion located at the Berry Showground Alexandra Street Berry NSW

Date: Sunday 10th November 2013

Time: Poultry Shed will open from 9am to view the birds.

The Auction will commence at 10.00am.

Payment: Cash only sales. All bidders must register prior bidding.

All birds will have informational cage labels with breed, gender, age and colour to help you in the buying process.

Knowledgeable volunteers will be happy to answer all your questions about the birds on Auction. Plus food and all accessories needed for your new birds will be available for purchase.

Parking is available within the Showground for a donation.

This auction will help to raise money for our local charity A Taste of Paradise. We are working with Strong Build and other members of the community on a permaculture organic vegetable garden for the farm plus a hatching program with their poultry. We have started to build the structure of the garden and we hope the funds raised this auction will allow for the first section to be built.

Refreshments available all day including free range egg and bacon rolls and gourmet coffee

If you intend on buying a bird please remember to bring a box to take them home in.

Over 800 birds will be up for auction including, layers, pure breeds, ducks, guinea fowl and bantams, There is always something for everyone.

If you would like to be kept informed on birds that have been booked into the auction and further auction dates, you can sign up for our newsletter on our website

www.shoalhavenpoultry.com.au

For more information contact Shayne on 0410 548 704 or info@shoalhavenpoultry.com.au

We look forward to seeing you all there.

FOXGROUND AND BERRY BYPASS UPDATED DESIGN PROJECT VIDEOS GO LIVE

Member for Kiama Gareth Ward today announced that an animation of the Foxground and Berry Bypass concept design is now available online, providing motorists with a front seat view of the final road design.

"The NSW Government is committed to growing and improving the state's road network and in this year's State budget announced a \$5.1 billion investment to build and maintain critical road and maritime infrastructure," Mr Ward said.

"The Foxground and Berry bypass will provide a four-lane divided highway for 11.6 kilometres of the Princes Highway between Toolijooa Road and Schofields Lane.

"The NSW Minister for Planning and Infrastructure approved the project in July and since then Roads and Maritime has refined the concept design to address issues raised through the submissions process.

"The design refinements have been included in the updated videos and show the Foxground and Berry bypass alignment from Toolijooa Road to Schofields Lane in both directions.

"The animation also includes a proposed pedestrian path and cycleway from Kangaroo Valley Road to Mark Radium Park and Victoria Street and from Kangaroo Valley Road to North Street and the sports fields.

"The bypass will provide significant safety, traffic flow and travel time improvements and will reduce flooding for many properties in Berry.

"Roads and Maritime will continue to consult with individual property owners to discuss land acquisition and access for investigations to prepare for the detailed design and construction phases.

"Roads and Maritime invited tenders in September from the two shortlisted tenderers, Lend Lease Engineering/Nace and Fulton Hogan to build the bypass.

"Tenders will close in December and the award of the contract is expected in the first half of next year.

"The detailed design will start soon after the award of contract with major work to follow.

"The Foxground and Berry bypass is scheduled to be completed in 2018, weather permitting," Mr Ward said.

The videos can be viewed in the video gallery on the Roads and Maritime project website at www.rms.nsw.gov.au/fbb. Traffic depicted in the videos is based on 2017 peak travel time volumes and show the general nature only of the existing features.

More information is available on the project website at www.rms.nsw.gov.au/fbb or by calling the Project Information Line, toll free on 1800 506 976

Raine&Horne®

Alex Cochrane
Patrick Tynan
Leanne Pugh
Darren Goulder

0412 081 600
0418 603 980
0409 319 719
0498 178 935

rh.com.au
we'll look after you®

Raine&Horne.

& Sold

Want to achieve the best possible price for your property? Ask us how.

Raine&Horne Berry
4464 1300
berry@rh.com.au

UNDER CONTRACT: (October)

Wharf Road Berry Village

- 1920's Classic Californian Bungalow
- 3035 m2 Block of land • Semi open plan living

UNDER CONTRACT: (October)

Victoria Street, Berry Village

- Quality home • Right in the heart of Berry Village
- 627m2 Block of land

SOLD: (October)

Prince Alfred Street, Berry Village

- 3 Bedroom tidy brick and tile single level home
- Convenient location • Large 868m2 Block of land

SOLD: (October)

Queen Street, Berry Village

- Large 2 Bedroom villa
- Ducted air conditioning throughout
- Single lock-up garage with internal access

& if you're thinking of SELLING Call Raine & Horne Berry now for your Obligation Free property appraisal on 4464 1300

2/65 Queen Street, Berry
Phone: (02) 4464 1300

Raine&Horne.

rh.com.au



Instead of asking "What do I want from life?", a more powerful question is "What does life want from me?"

Eckhart Tolle

Global Contact presents:

WHERE TO FROM NOW?

Be inspired by women who have asked the question & are living their answers.



Stephanie Dowrick
writer, public speaker,
social commentator,
spiritual activist, retreat
leader, interfaith minister.



**Dorothy Mc Rea -
Mc Mahon**
Uniting Church minister,
spiritual & human rights
activist, trailblazer.



Susan Murphy
Zen master, author, film
maker, radio producer,
feminist, deep ecologist,
mother & grandmother.



Jane Ewins
consultant, integrative
counsellor, tree-changer,
ex-corporate executive,
cancer survivor, advocate.

Event Interlocutor Walter Mason (Destination Cambodia)

Saturday 30 November 2013

BERRY

9.30 for 10 am - 4.00 pm

\$70* early-bird price (pay by 8th November). \$88* from 9th November

*Pre-purchase from Global any 2 products from the speakers "range" & attend event for \$44.00.

Bring or buy your own lunch.

Concession price of \$50.00 for people on a pension.

This day may be for you if you have ever wondered:

- How do we turn problems into opportunities?
- Is it all too hard and too late?
- How can I make a difference?
- There's something missing - what is it?
- Why aren't "they" doing something?
- How to let go, forgive & move on?

Proceeds from the day go to Sydney homeless women & the Shoalhaven Women's Health Centre.

Bookings: Global Contact

Phone: 02 4464 2121

Email: info@globalcontact.com.au

f Find us on facebook - Global Contact Bookstore

open 7 days 10am - 5pm

131 Queen St Berry NSW Australia Ph: (02) 4464 2121 www.globalcontact.com

COMMUNITY SEWING DAY REPORT AND THANK YOU

St Luke's hall was the venue for Zonta Berry's first community sewing day, and a very busy group of volunteers and club members worked hard all day. There was a wonderful atmosphere in the room as dozens of breast cushions, drainage bag holders and bright pillow cases for children with cancer were produced and wrapped for delivery. A delicious lunch provided for the workers gave us all a boost and we would like to sincerely thank those volunteers who gave their time and talents to help us out.

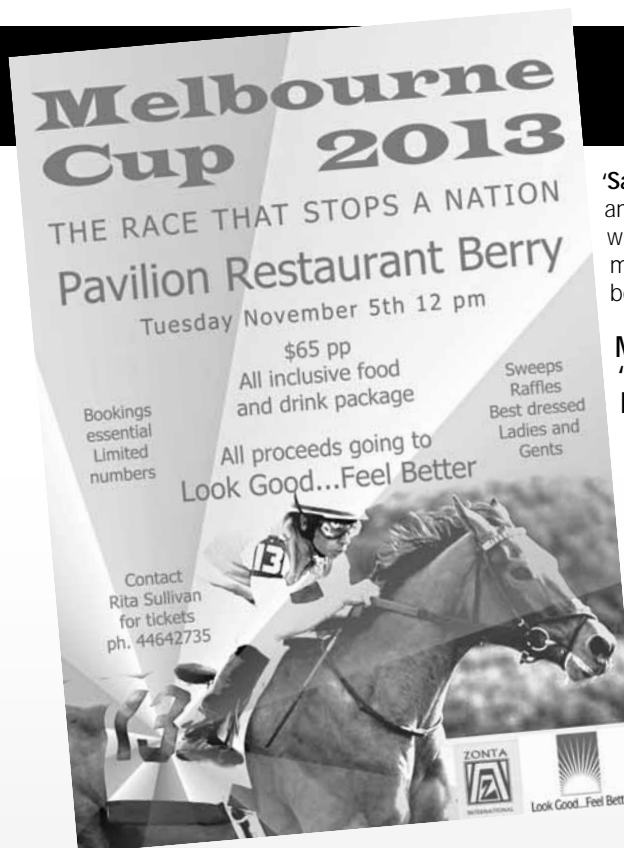
CONFERENCE JOTTINGS

Much hilarity was mixed with the serious business of conference in Terrigal. Ten Zontians travelled together in a small bus and most bunked down in a share house for the duration. Let your imagination run wild concerning the chatter throughout the night!

We were privileged to listen to several young women, recipients of Zonta International and District Awards, who addressed us on Sunday. From a wide range of backgrounds, they displayed unbelievable confidence and success in their chosen fields and will all benefit from the assistance given to them by Zonta.

It was reported by Anne Selle from the Botany Bay Zonta Club, that the District has made 4,700 breast cushions this year. A new record!

Penny Lucas from the Zonta Club of Canberra Breakfast was appointed as Area Director. Penny is well known to many members of Berry Club and we look forward to her input over the next two years.



BLUE ILLUSION BOWRAL HELPS ZONTA WITH 'NO TO DOMESTIC VIOLENCE'

As mentioned in last month's TC, we are involved in promoting **16 Days of Activism** against domestic and gender violence from **November 25th**. During this period we have sponsored eight weeks of advertising in local cinemas and in addition Blue Illusion is helping out. Blue Illusion's policy to assist local volunteer organisations means that on **Saturday, November 30th, from 2-5 at their Bowral store**, 20% of all sales will go to Berry Zonta's fund raising for the

'Say No' campaign. Champagne and nibbles will be served while you browse and shop, so maybe a day in Bowral could be on the cards.

MELBOURNE CUP FOR 'LOOK GOOD, FEEL BETTER'

Don't forget to book your tickets with Rita on 44642735 for lunch, drinks, prizes and fun on November 5th at the Boutique Motel. The cost is \$65 to assist this great organisation in its work. Great raffles too!

ZONTA AWARDS

Watch this space in next month's TC for news about Zonta Awards to assist and encourage local young women.

CHRISTMAS

Our November meeting will be the last for the year with a dinner at Bomaderry Bowling Club for members and partners. Normal meetings resume in January.

Dinner Meetings are held on the fourth Tuesday of the month at Gabby's, Berry, 6.30 for 7.

Please call Mary Seelis on 44641191 to book.

PR and Communications

Check us out on Facebook



as individual as you are

open your door to a higher level of service...



all price levels
all property types
all with a premium level of service

gary dale 0418 211 917

residential and rural specialist
gary.dale@belleproperty.com



now open

belle property

the berry inn building,
122 queen street **4464 1636**

belleproperty.com/berry

belle
PROPERTY

NEW STANDARD CONTRACT FOR RETIREMENT VILLAGES

Member for Kiama Gareth Ward today announced that the new streamlined standard contract and disclosure documents for retirement villages must be used when selling property or occupation rights to potential residents.

Mr Ward said the new documents will make the move into a village easier and less stressful for retirees and their families.

"It is now a simpler process to compare villages to choose one that best suits a person's lifestyle and needs," he said.

"The NSW Liberals & Nationals made an election commitment to develop a standard contract for retirement villages and we have delivered.

"These simple reforms are long overdue and by delivering them in its first term the Government is making a tremendous difference to the many thousands of people who move into retirement villages each year.

"Operators must also give potential residents a detailed disclosure statement at least 14 days before they sign a village contract.

"The old disclosure statement has also been simplified from 20 pages down to six so that residents can easily find the important information they need before signing.

"In addition, a new general inquiry document must also be provided if a potential resident, or someone on their behalf, contacts a village.

"This document gives an overview of the village, its facilities, the type of accommodation available and a broad idea of the costs.

"Operators risk severe penalties if their contracts are not in the standard form with a potential fine of up to \$55,000 and the risk of not being able to enforce the contract," Mr Ward said.

President of the Retirement Village Residents Association, Jan Pritchett, welcomed the introduction of the new standard documents.

"They will be beneficial for new residents moving into NSW villages, by providing the vital financial information in the initial pages of the contract," she said.

The documents and further information are available on the NSW Fair Trading website at www.fairtrading.nsw.gov.au or by calling 13 32 20.

FREE POWER SAVINGS PROGRAM AVAILABLE TO HELP LOCAL HOUSEHOLDS

Member for Kiama Gareth Ward today encouraged local residents to take advantage of the NSW Home Power Savings Program to save money on their power bills.

Mr Ward said that the program aims to help eligible households reduce their power use and save up to 20% off their power bills.

"There are energy experts who are working across our region and are passionate about helping householders save power and money, without compromising comfort," he said.

Mr Ward said that eligible households who join the Home Power Savings Program will receive a:

- A FREE 1 hour In-home Power Assessment by an energy expert who will discuss with you how and where you are using power;
- A FREE Power Savings Kit of energy efficient products, fully installed by the energy expert, which includes a stand-by saver power board, 4 energy efficient light bulbs, a water efficient showerhead, a shower timer, a tap aerator, a set of draught-proof strips for doors or windows, a door seal for bottom of door, 2 door snakes and a thermometer; and
- A FREE Personalised Power Savings Action Plan with tips on ways to save power

"There are many reasons why more than 193,000 householders have decided to join the program, and the most common ones are to reduce their electricity use and save money on their power bills.

"Before joining the program, many householders thought they were already doing everything they could to save energy, and were pleasantly surprised to learn that there were some simple and easy things they could do to save more," Mr Ward said.

To be eligible for the program a householder must:

- Live in NSW;
- contribute to the power bills of the property; and
- either own the property or be renting

Plus, hold one of the following cards:

- Pensioner concession card;
- Low income health care card;
- Department of Veterans' Affairs pensioner concession card;
- Department of Veterans' Affairs repatriation health card (Gold); and
- Department of Veterans' Affairs repatriation health card (White)

Or

- Rent a government or community-owned property; or
- Be on a hardship assistance plan with their energy retailer.

To join the Home Power Savings Program, please call 1300 662 416 or email homepowersavingsprogram@fieldforce.net.au

Clairvoyant in Berry

Judy was born into a family of Clairvoyants and Palm Readers and for generations her family has been conducting readings that offer the opportunity to look into your past, present and future life.

Judy brings all of her skills as a psychic medium, clairvoyant and palm reader, as well as her background in Behavioural Psychology to your reading in order to offer you a comprehensive view into what is currently occurring in your life and where your current choices may lead into the future.

IF YOU ARE LOOKING FOR GUIDANCE, CONFIRMATION OR SIMPLY A GREATER UNDERSTANDING ABOUT YOUR LIFE, A READING WITH JUDY WILL PROVIDE YOU WITH THIS.

PSYCHIC / CLAIRVOYANT PALMISTRY

JUDY WYNNE-JONES
CLAIRVOYANT IN BERRY



MOB: 0422 234 211

Shoalhaven City residents save through Fridge Buyback Scheme

Shoalhaven City residents saved a combined estimated \$54,900 on their residential electricity bills over the last financial year as a result of the Fridge Buyback Scheme.

The popular NSW State Government Fridge Buyback scheme encourages the community to save money on their power bills and help the environment by getting rid of their second unwanted, working upright freezers and fridges.

The 2012/13 financial year saw local residents provide over 180 second fridges through the scheme.

This equates to an estimated 183 tonnes of greenhouse gases saved from entering the environment and the recycling of over 16 tonnes of metal.

Mayor, Joanna Gash said she was extremely pleased to see so many residents take up the scheme saying their actions would have an ongoing positive effect on the local environment.

"The Fridge Buyback Scheme provides local residents with an opportunity to save thousands on their future electricity bills while helping the local environment," said Cllr Gash.

"The scheme saved a remarkable 8,375 tonnes of greenhouse gases from entering the earth's atmosphere, across the State in the last financial year.

"Second fridges are some of the biggest energy users in the home, costing an average of \$300 a year to operate."

"By removing a second fridge from the home, local residents are saving themselves money and having a long term positive impact on the environment."

Mayor Gash said the Fridge Buyback scheme uses professional removalists to collect the big old fridges and upright freezers.

The appliances are then professionally degassed and the metals recycled.

The Fridge Buyback program provides householders with a \$35 rebate for second working fridges or upright freezers collected from their home, if less than six steps are involved in the removal.

For more details or to make a booking please visit www.fridgebuyback.com.au or call 1800 708 401.

Transformers Youth Group

Transformers Youth Group is a Christian run youth group for Years 7-10 at High School. In Term 4, Year 6 youth are invited to come along.

The aim of the group is to encourage the youth to consider thinking God's way as revealed in the Bible. This is done through a short devotion each week.

"Do not conform to the pattern of this world, but be transformed by the renewing of your mind" Romans 12: 2a

The following is our programme for the rest of Term 4, 2013.

1st November - Laser Tag

We will meet 6pm at Dad's, Mum's & Little Ones (Unit 4/10 Central Ave, South Nowra). Pick up at 8pm from the venue. **Cost \$10.**

8th November- Pool party/BBQ

We will meet at 49 George St, Berry at 6pm. Pick up at venue 8pm. BBQ dinner provided. Please bring swimmers, towel, spare clothes etc. **Cost \$3.**

15th November- 10 Pin Bowling

Bomaderry Bowling Alley Meet at Bomaderry Bowling Alley at 7 pm & pick up from venue 9 pm. **Cost \$10** includes: shoe hire, 1 bowling game, pool table and supper.

22nd November- Hungry Jack's at Albion Park

We will meet at St Luke's Anglican Church hall at 6pm. We will be travelling by mini bus to Albion Park Hungry Jack's. Return 8.30pm to church. **Cost: \$ to pay for your dinner.**

29th November- Minute to win it!

Join in the excitement of Minute to win it! We will meet at St Luke's Anglican Church hall at 7pm. Pick up at 9pm **Cost \$3.**

6th December- Tennis

We will meet 7pm at St Luke's Anglican Church Hall, Berry. Pick up at 9pm.

BYO tennis racquet & wear comfy shoes (Tennis racquets will be provided for those who don't have one). **Cost \$3.**

13th December- Mega Christmas Party

Fabulous Christmas dinner, mystery guests, fantastic fun and adventure! We will meet at St Luke's Anglican Church hall at 6pm. Pick up at 8pm **Cost \$3.**

As you can see Transformers is a youth group with exciting activities for youth. It is a safe place to have fun, learn more about God and make great friends. Transformer's provides a positive environment for young people to enjoy themselves under a dedicated leadership team lead by me. I am the full time Scripture Teacher at Bomaderry high school. I also work part time for St. Luke's Anglican Church Berry.

For more information please contact Grant Abbott on 0447 667 389



ADVERTISEMENT

Gareth Ward MP

Member for Kiama



"On Tuesday 8th October between 3pm and 4pm, I will be outside the Berry Pharmacy at 113 Queen Street, Berry. Please do drop by and say g'day."

Contact Gareth: P 4232 1082 | F 4232 3577

E kiama@parliament.nsw.gov.au

W www.garethward.net.au

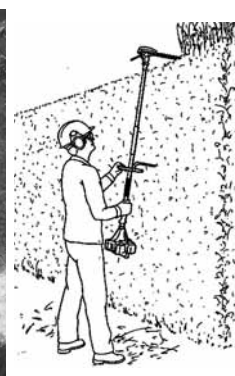
Authorised by Gareth Ward MP, 102 Terralong Street, Kiama NSW 2533. This advertisement was produced using parliamentary entitlements.



HATHAWAY HEDGES

LANDSCAPE MAINTENANCE

- ALL SIZE LAWNS
- ALL SIZE GARDENS
- ALL SIZE HEDGES
- PLANT SALES
- ADVICE
- QUALIFIED HORTICULTURIST
- OVER 20 YEARS EXPERIENCE



Based in Broughton Village we service Berry and Surrounding Areas

Call Lawrie Hathaway

0411 888 333 A/H : 42 342 900

BERRY UNITING CHURCH ORGAN RECITAL SERIES 2013



Berry Uniting Church now has a beautiful new Allen Organ. The sound of the organ has been digitally re-mastered from recordings of the great pipe organs of Europe and the USA.

A two concert series, with the organ as the central focus, has been planned by the members of the Berry Uniting Church so that many people can enjoy this wonderful new instrument. The 2013 season will feature organists Heather Moen-Boyd and David Foley.

DAVID FOLEY (Organist)

Guest Artist: Lesley Challender (Oboe)

**Singers: Christa Leahmann,
Janet Morris, Ona Boyd-Frazier
& Brian Outten.**

2:00PM SUNDAY 1st DECEMBER, 2013

After studying piano privately, and undertaking Tertiary level Vocal and Opera studies at Queensland Conservatorium of Music, David worked in the chorus of Opera Queensland, before relocating to Sydney in 1984, working with The Song Company, and then Australian Opera, for a period of 23 years. David left the company in 2007 to establish himself on the South Coast. For a number of years he was Music Director, Chorus Master and Accompanist for Opera South productions and concerts from 2003-2010. He now works as a Vocal Coach, Accompanist, Concert organizer and presenter. He has adjudicated the Junior sections of the Shoalhaven Eisteddfod, and has been Guest Soloist for Lydian Singers, and Music Shoalhaven. Most recently he has worked with Nowra Players and Albatross Musical Theatre Co. A professional musician for over 30 years, David also conducts Opera Appreciation Classes at U3A Nowra, and in Berry, and is the organist at Berry Uniting Church. Tickets: Adults \$25, Concession \$20, Children \$5 All proceeds from the concert will go to The Afghan Orphans & Children's Support Organisation.



LESLEY CHALLENGER (Oboe)

Lesley took up the position of Musical Director of the Lydian Singers mid 2006.

She was trained in oboe, piano and singing at the Sydney Conservatorium of Music.

Lesley's time is spent teaching in her private studio in Kiama and at Nowra Anglican College and Shellharbour Anglican College.

Her work also includes directing choirs and accompanying other musicians, choirs and students.

Lesley has played recorder, crumhorn and oboe in Early Music Ensembles and currently is a member of the Baroque Chamber Ensemble, Les Amis.

Lesley has been Choral Director and organist at various Sydney churches and Musical Director of community, school and church choirs.

2:00PM SUNDAY 1st DECEMBER, 2013

BERRY UNITING CHURCH
ALBERT STREET BERRY



presents

***Broughton
on the Ridge***

Restaurant, function and reception centre

NOW TAKING BOOKINGS

Friday and Saturday Nights

Open for lunch Friday Saturday and Sunday

Broughton on the Ridge is a purpose built venue designed to cater for any event.

Large veranda with majestic views to Coolangatta, Berry, Saddleback and Cambewarra, Mountains making for the perfect spot to enjoy your lunch or dinner while watching the sun go down.

A fully licensed bar with our own hand crafted beer on tap

For bookings phone 4448 5825

SHOALHAVEN CITY COUNCIL

News for Berry

COMMUNITY CONSULTATIVE BODY - BERRY ALLIANCE

The following Development Applications, Development Determinations and other items have been notified through the month and in accordance with Berry Alliance policy they have been placed on the Berry Alliance Notice Board in the window of the Post Office, posted on our web site www.berryalliance.org.au and printed in the next available issue of the Town Crier. The Berry Alliance is the Community Consultative Body in Berry and we advertise all items that we are advised of by council so community members can have their say. **Please Note:** Council now have DA Tracking available on their web site where all details including submissions are displayed for your information. **Go to:** www.shoalhaven.nsw.gov.au and go to DA Tracking.

APPLICATIONS RECEIVED

- CD13/1274 Deck - 60 Borrowdale Cl, BERRY - 16-Sep-13
- DA13/2004 New Commercial - Change of Use to Gelato and Coffee Bar - 114 Queen St, BERRY - 20-Sep-13
- DA13/2007 Outbuildings - machinery shed 16m x 9m - Agars Lane, BERRY - 20-Sep-13
- CD13/1283 Dwelling Additions - attached awning and deck - 180 Harley Hill Rd, BERRY - 24-Sep-13
- DA13/2030 Demolition of Existing Swimming Pool - 321 Bryces Rd, FAR MEADOW - 26-Sep-13

APPLICATIONS DETERMINED

- DA13/1579 Single Storey Dwelling with Detached Garage - Kangaroo Valley Rd BERRY - Approved - 16-Sep-13
- DA13/1860 Little Rae - Retail & Takeaway Food. Alterations to existing verandah on western side - 78 Queen St BERRY - Withdrawn - 20-Sep-13
- SF10345 Boundary Adjustment - 3 Lot Boundary Adjustment under SEPP 20 Schofields Lane, B90 Princes Hwy & Hitchcocks Lane BERRY - Approved - 20-Sep-13
- DA13/1845 Inground Swimming Pool 210 Bong Bong Rd BROUGHTON VALE - Approved - 23-Sep-13
- DA13/1963 Proposed Change of use of Shop 1 to remedial massage 78 Queen St BERRY - Approved - 9-Oct-13
- SF10339 Two Lot Rural Subdivision 359B Coolangatta Rd FAR MEADOW - Approved - 8-Oct-13

Applications are advertised in accordance with Council's Community Consultation Policy for Subdivision and Development Applications and the Formulation of Development Guidelines and Policies.

Please note, however, that not all applications on this list will be advertised and that advertising may not commence immediately, particularly if important documentation has been omitted from the application. If an application is required to be advertised, the relevant community associations will be separately notified of the advertising period and the closing date for receipt of submissions.

BERRY MASONIC VILLAGE AUXILIARY

We have claimed the date for our Street Stall for FRIDAY 22nd November from 8.30, should be lots of great cooking with Christmas Cakes and puddings being there plus plenty of interesting craft come along during Friday morning Our village is working hard to keep all the residents busy with their craft mornings doing wonderful pictures selling some at street stall.

The Auxiliary will be having their Christmas Party at the Berry Pub on Wednesday 18th December. If you work at the Kiosk, doing

fingers or just absent from meetings please ring Irene if you want to attend for bookings.

We would love to have you join us on the 3rd Wednesday of each month at 9.30am in the Activity Hall, Albany Lane, Berry. We have a lovely cuppa after it all for chatting. Please ring Irene 44 642 612. Our Fashion Parade with Kerries Clothes will be on in April 2014. Looking forward to great fashions for Mother's Day.

bombo

blinds | curtains | shutters | awnings



4237 8280 www.bombo.com.au

Visit our beautiful showroom at **7 Johnson Street, Kiama Downs** (near the IGA)

WE CARRY THE FABULOUS "BLINDS BY PETER MEYER" RANGE • ALL PRODUCTS COMPLY TO CORD SAFETY LAWS



BUILDING THE WAY YOU IMAGINED IT.

J2 Build has just launched on the South Coast.

Jacques is an award winning master builder specialising in architecturally designed homes with minimal ecological footprint.

To discuss your plans call 0404 077 004

www.j2build.com.au



St Luke's Anglican Church,
Princess Street, Berry
invites you to a

*Floral Choral
Evensong*

Celebrating Advent and those who arrange
the flowers in our churches

3pm Sunday 24 November 2013

Enquiries: office@berry.anglican.asn.au
4464 1058



The Emporium Food Company is
a gourmet deli and café, sourcing
gourmet fare from all over the globe.

If there is something you can't find
we will source it for you.

Or you can sit in-store and enjoy a light
lunch with Toby's Estate Coffee.

127B Queen Street Berry NSW 2535
T: 4464 1570 F: 4464 3291



Calendar of

NOVEMBER

3rd November - Saturday - Red Cross Garage Sale at 1 Windsor Drive Berry 8am.
Phone Sheila 4464 2049 or Irene 4464 2612 for a pickup of saleable goods.

4th November - Sunday - Berry Markets at the Berry Showground. Contact info:
berrymarkets@bigpond.com ph 4464 1476 Fridays only 10am-2.30pm

5th November - Tuesday - Zonta Club of Berry Melbourne Cup Lunch @ Berry Boutique Motel.
Supports 'Look Good, Feel Better' and all drinks and food included for \$65. Lots of fun!
Phone Rita to book on 4464 2735.

6th November - Wednesday - Red Cross Meeting 2pm at Berry Uniting Church Hall, Alfred Street,
join us for a cup of tea! Phone Irene Birks 4464 2612.

6th November - Wednesday - Berry Computers for Seniors meets in the Uniting Church Hall, 69
Albert Street, Berry from 9.00am to 12.30pm. To assist mature aged members of our community
to use and enjoy the benefits of computer technology. Phone Kevin Watson: 02 4448 6267,
email berrycfs@gmail.com.

7th November - Thursday - The Annual General Meeting of the Community Consultative 'Forum on
Infrastructure Priorities in Berry 6.30pm at Berry Courthouse.

8th November - Friday - CWA monthly meeting from 1pm at the CWA rooms Victoria Street.
Enquires Marie 4423 2164 or Yvonne 4441 6656 or www.cwaofnsw.org.au

10th November - Sunday - Music Shoalhaven showcases performances from cast members of
Mozart's 'Magic Flute at the Nowra School of Arts - 2pm Visit www.music.shoalhaven.net.au for
full details and ticket prices Enquiries contact ph. 4464 2245.

14th November - Thursday - Australian Decorative and Fine Arts Society: ANNUAL GENERAL
MEETING AND SOCIAL GATHERING Venue: Berry Court House 5 pm. Bookings 4441 7025.

16th November - Saturday - Man About the House - Join comedian, broadcaster and modernist
architecture tragic Tim Ross as he artfully presents fantastical tales in the latest incarnation of
his acclaimed stand-up & music show Man About the House in Glenn Murcutts iconic Boyd
Education Centre at Riversdale. Doors open 6.30 pm, show starts 7.30 pm. Boyd Education
Centre, Riversdale Event Cost: \$40 (includes drink on arrival) Accommodation Cost: \$300
(per 4 bed cabin, shared bathroom) Cafe & Bar onsite featuring regional food, wine & craft beers.

19th November - Tuesday - Berry & Districts Garden Club monthly meeting at the Masonic Village
Community Room from 7.30pm new members welcome please contact Jenny ph. 4464 2563.

20th November - Wednesday - Berry Computers for Seniors meets in the Uniting Church Hall,
69 Albert Street, Berry from 9.00am to 12.30pm. To assist mature aged members of our
community to use and enjoy the benefits of computer technology. Phone Kevin Watson:
02 4448 6267, email berrycfs@gmail.com

22nd November - Friday - BERRY MASONIC VILLAGE AUXILIARY are hosting a Street Stall from
8.30, should be lots of great cooking with Christmas cakes and puddings plus plenty of
interesting crafts.

23rd November - Saturday - Christmas Street Stall 9am Broughton Walk Berry

24th November - Sunday - Muir House Art Gallery Berry hosts an 'Artists in Action' day starting at
10am Artists will be painting, drawing, spinning, weaving and creating, come along and meet the
artists, browse the gallery and enjoy a complementary coffee or tea - free activities for children.
10 Prince Alfred St Berry-on the corner, more info: 0402 279 154.

24th November - Sunday - 3pm Floral Choral Evensong - celebrating Advent and those who
arrange the flowers in our churches, at St Luke's Anglican Church, Princess Street, Berry.
Enquiries: 4464 1058, www.berry.anglican.asn.au

25th November - Monday - Start of Zonta International's 16 Days of Activism against Domestic and
Gender Violence. Ads sponsored by Zonta in local cinemas

26th November - Tuesday - Zonta Club of Berry's Christmas Party @ Bomaderry Bowling Club.
Phone Mary on 4464 1191 for information

30th November - Saturday - Zonta fundraiser @ Blue Illusion Bowral 2-5pm. Drinks and nibbles
and 20% of sales go to Say No to Violence campaign.

Events

Future Dates

1st December - Sunday - Berry Markets at the Berry Showground. Contact info: berrymarkets@bigpond.com ph. 44 641 476 Fridays only 10am-2.30pm

4th December - Wednesday - Berry Computers for Seniors meets in the Uniting Church Hall, 69 Albert Street, Berry from 9.00am to 12.30pm. To assist mature aged members of our community to use and enjoy the benefits of computer technology. Phone Kevin Watson: 02 4448 6267, email berrycfs@gmail.com

6th December - Friday - CWA Berry Christmas lunch Nowra Golf Club 12:30-1:00pm

13th December - Friday - CWA monthly meeting from 1pm at the CWA rooms Victoria Street. Enquires Marie 4423 2164 or Yvonne 4441 6656 or www.cwaofnsw.org.au

14th December - Saturday - 2.30pm. Shoalhaven Lydian Singers at St Patrick's Catholic Church, Berry. A French themed Christmas Concert with Camille Saint-Saëns' 'Christmas Oratorio' and carols originating in France. Tickets: \$20, Concession \$15 from Shoalhaven Visitors Centre. www.lydiansingers.org.au

15th December - Sunday - 2.30pm. Shoalhaven Lydian Singers at Nowra School of Arts, Berry St, Nowra. A French themed Christmas Concert with Camille Saint-Saëns' 'Christmas Oratorio' and carols originating in France. Tickets: \$20, Concession \$15 from Shoalhaven Visitors Centre. www.lydiansingers.org.au



Mary's Book

Events and major attractions around Berry - For further information regarding each event please refer to community group listing on the next page.

31st Jan/1st Feb Berry Show Society Annual Berry Show

March 17th-24th Berry Alliance host Seniors Week celebrations - Berry

May 25th Berry Rotary Club presents the
Berry Celtic Festival

July Each Year Berry Alliance presents a three week event:
Le Tour de Berry

NOVEMBER 3rd-4th Berry Garden Club Annual Camellia Festival

NOVEMBER 17th-20th Berry Garden Clubs Annual Garden festival

Fire Permit Update

"Due to the Section 44 and current fire activity within the
Shoalhaven Rural Fire District,
all permits to burn are suspended
until the Section 44 is revoked.

"For further information permit holders should contact their permit
issuing officer or the Shoalhaven Fire Control Centre on 4424 4424.

**Shoalhaven
Lydian Singers**
present

Joyeux Noël

ST PATRICK'S CHURCH

**Berry
Saturday 14th December
2.30 pm**

**NOWRA SCHOOL OF ARTS
Sunday 15th December
2.30 pm**

**Tickets:
\$20 - Concession \$15**

**Shoalhaven
Visitor Information Centre**

Ph: 1300 662 808

www.lydiansingers.org.au

Tim Harvey
& Associates



New Clinic at 'the space'

1/98 Queen Street
(behind Hedgehogs Coffee Shop)

Tim Harvey

Counsellor and Psychotherapist
specialising in Business and Life Coaching
Relationships, Conflict Resolution
and Anger Management.

Phone 0414 704 087 Web www.timharvey.com.au
email counselling@timharvey.com.au



ACCESS
STORAGE CENTRE



- Household & Commercial Storage
- Climate Controlled Wine Storage
- Units individually alarmed
- Boxes & Transportation Arranged
- Free Move in Service

Ph: 4422 1955

**Cnr Meroo Rd & Victa Way
Bomaderry**

Berry Community Groups

If your Berry Community Group is not listed here please return the form sent out or contact the Berry Alliance for the form to complete to register.

Berry Alliance Inc. PO Box 202 Berry 2535 info@berryalliance.org.au	0449 569 059 www.berryalliance.org.au
Berry Alliance Town Crier PO Box 202 Berry 2535 towncrier@berryalliance.org.au	0428 037 572 www.berryalliance.org.au
Berry Chamber of Commerce & Tourism Inc. PO Box 216 Berry 2535 info@berry.org.au	4464 3122 www.berry.org.au
Australian Decorative Fine Arts Society PO Box 269 Berry 2535 Monthly, 7.30pm at Berry School of Arts	4464 3242 shoalhavenadfas@bluebottle.com
Australian Red Cross PO Box 249 Berry 2535 1st Wednesday each month at 2.00pm, Berry Uniting Church	4464 2612
Australian Labor Party Berry Shoalhaven Heads Branch 78 Woodhill Mountain Rd Berry 2535 2nd Wednesday Monthly, Hotel Berry, 6.30pm meeting	4464 3965 adriandee@bigpond.com
Berry Alcoholics Anonymous Meets every Thursday Night at 7.30pm 34 Alexander Street Berry www.shoalhavenaa.com.au	1300 903 392
Berry Al Anon Family Group For family & friends of problem drinkers Meet every Tuesday at 7pm Berry Uniting Church Hall, Albert Street, Berry	4448 8231
Berry Bridge Club INC PO Box 366 Berry 2535 Meets Saturdays @ 12.45pm-4.30pm at the Masonic Lodge Community Hall	4422 3343 mareaallen1@bigpond.com
Berry Community Activities Centre Inc. Berry Community Craft Cottage 12 Prince Alfred St Berry 2535 1st Monday Monthly, 5pm @ Muir House - berrymarkets@bigpond.com	4464 1476
Berry Computers for Seniors PO Box 103 Berry 2535 1st & 3rd Wednesday monthly, 10 – 12noon Uniting Church Hall, 69 Albert Street Berry.	4448 6267 berrycfs@gmail.com
Berry Community Pre-school PO Box 143 Berry 2535 berrypreschool@bigpond.com	4464 1764 www.berrypreschool.org.au
Berry Courthouse Conservation Committee PO Box 218 Berry 2535 2nd Monday Bi-monthly at 5.30pm at the Berry Courthouse	0458 369 266
Berry Crafters & Quilters Meets each Wednesday 10am – 4pm at Muir Cottage, Prince Alfred Street mford.646@gmail.com	4464 3788
Berry & District Garden Club PO Box 122 Berry 2535 3rd Tuesday Monthly, 7.30pm Masonic Village Community Room adriananddee@bigpond.com	4464 3965 www.berrygardens.org.au
Berry Drama group Lesley Carter Facebook: Berry Drama Group	4421 6565 berrydramagroup1@gmail.com
Berry & District Historical Society Inc. PO Box 153 Berry 2535 3rd Monday Monthly, 1pm at the Berry Museum	4464 3097 berrymuseum@bigpond.com
Berry Ethics Society PO Box 363 Berry Meets 1st Monday of each month at the Berry Hotel	0451 153 332 berry.ethics@gmail.com
Berry Evening View Club PO Box 76 Berry 2535 3rd Wednesday monthly, 7pm Berry Bowling Club	4464 1032 pamcoles@optusnet.com.au
Berry Rotary Club PO Box 81 Berry 2535 Every Thursday 6pm for 6.30pm at Bowling Club	4464 3636 smithgf@bigpond.com www.berryrotary.org.au
Berry Landcare PO Box 422 Berry NSW 2535 See monthly article for working bees.	4464 2198 berrylandcare@gmail.com.
Berry Leprosy Mission Auxiliary 17 Gwenda Avenue Berry 2535 3rd Thursday Bi-Monthly (June, Aug etc.) 1.30pm above address.	4464 1693 trish.n@optusnet.com.au
Berry Masonic Village Auxiliary Inc. PO Box 435 Berry 2535 3rd Wednesday monthly, 9.30am Activities Room Berry Masonic Village	4464 1774
Berry Meals on Wheels PO Box 221 Berry NSW 2535	4464 1604 3rd Monday monthly at 9am CWA Hall Berry
Berry Men's Shed PO Box 103 Berry 2535 Tuesdays and Thursdays 10am- 4pm North Street Berry	4464 3956 / 4464 2619 A.H e: richardcwiseman@hotmail.com www.berrymensshed.com.au
Berry Playgroup PO Box 279 Berry NSW Friday mornings at St Luke's Hall, via Victoria St	0415 519 262 berryplaygroup@yahoo.com.au Facebook: Berry PlayGroup
Berry Public School P&C Association PO Box 222 Berry 2535	4464 1158 berrypandc@gmail.com
Berry RSL Sub Branch PO Box 3307 North Nowra 2541 1st Tuesday Monthly at 9.30am Sub Branch Hall-26 Alexandra St Berry	4423 1960 stuart.christmas@defence.gov.au
Berry School of Arts Office open Thurs and Fri 10am till 3pm.	4464 1476
Berry Show Society Inc. PO Box 173 Berry 2535 Meet 1st Tuesday monthly at Committee Rooms at the Showground berryshow@virtualcity.com.au	4464 1567 www.berryshow.org.au
Berry Showground Management Committee PO Box 443 Berry NSW 2535 Meet 2nd Monday Bi-monthly 7.30pm Old Council Chambers 24 hour caretakers / bookings Tony & Vicki Pye	4448 6093 0427 605 200

Berry Silver Band (est. 1897) 6 Clarence Street Berry 2535 Meet Monday evenings 7.30-9.30pm, Agricultural Hall, Berry Showground	Owen 4464 1250 / Kaye 44651240 kayecj@westnet.com.au
Berry Spinners and Weavers PO Box 377 Berry 2535 Thursdays 10-12noon at Berry Showground Hall	4464 3081 berryspinnersandweavers@gmail.com
Brogers Creek Landcare 53 Wattamola Rd Wattamola NSW Last Saturday of each month 2.30-4.30pm.	4465 1482 Andrew.fitzsimons@det.nsw.edu.au
Country Women's Association – Berry Branch PO Box 321 Berry 2535 2nd Friday each month at 1pm in the CWA Rooms.	4464 3187 marcia@shoalhaven.net.au
David Berry Hospital Auxiliary PO Box 285 Berry 2535 2nd Monday Monthly, 12.30pm David Berry Hospital Conference Room	4464 1774 bke25349@bigpond.net.au
Friends of Berry School of Arts PO Box 393, Berry NSW 2535 Meetings TBA	4464 1313 e info@friendsofberry.net www.friendsofberry.net
Hands Across NSW Inc PO Box 162 Cambewarra NSW 2540 Meets 1st Sunday, monthly at Broughton Lodge, Berry Agriculture Hall	4446 0567 e hands.across.nsw@gmail.com
Jaspers Brush Airport Action Group Inc. PO Box 428 Berry NSW 2535 Meeting – as convened	info@takeaction.org.au www.takeaction.org.au
Knit with Love c/- 34 Princess St Berry 2535 - terryandlyn@gmail.com Meets Friday 1pm – 3pm St Luke's Anglican church hall starts 8/2/2013 except Dec/Jan	Lyn 4464 3651
Liberal Party of Australia – Berry Branch 121 Kangaroo Valley Rd Berry 2535 Meets 1st Monday of the month 6.30pm for 7pm start at Gabbys of Berry	0412 550 480 hartwell@bigpond.com
Lodge Broughton 131 PO Box 2092 Bomaderry NSW 2541 1st Wednesday monthly Agricultural Hall cnr Albany & Victoria Sts	
Mainly Music Berry Community Church hall – for children under five and parent /carers Meets Tuesdays during school term 10-11.30am \$4 per family	4464 1693
Penwood Rail Road Inc. B215a Princes Highway Jaspers Brush 2535. Running day - 1st Sun monthly - visitors welcome	4464 1201 johnandlynclark@bigpond.com
Probus Club of Berry PO Box 68 Berry 2535 Meets 2nd Tuesday monthly, 9.30am Berry Masonic Village Hall	4448 6053 hughmc0803@gmail.com
RedBerry Quilters PO Box 324 Berry NSW 2535 4th Friday monthly @ Grandstand Berry Showground 9.30am-1.30pm	4464 2587
Shoalhaven Arts Society Inc. Meets 2nd Thursday each month except Jan 12:30 - 3:30 Berry Showground under the Pavilion editor@shoalhavenartsociety.com	Linda 0402 279 154
Shoalhaven Historic Vehicle Club Inc. PO Box 1, Nowra NSW 2541	4464 1723 abinnington@shoal.net.au
Shoalhaven Poultry Group 161 Kangaroo Valley Road info@shoalhavenpoultry.com.au	0410 548 704 1st Wednesday each month above address www.shoalhavenpoultry.com.au
St Vincent de Paul Society PO Box 77 Berry 1st Monday monthly 7.30pm St Patricks Church Hall	0410 548 704 e info@shoalhavenpoultry.com.au
Transformers Youth Group St Luke's Anglican Church 68a Princess St Berry office@berry.anglican.asn.au Meets every Friday 7-9pm during school term. Contact Grant Abbott, Youth Minister	4423 5652
Zonta Club of Berry PO Box 302 Berry 2535 Meets 4th Tuesday monthly for dinner.	Ph-0411318193(Jean) or 42322881(Lorna) email-berry@zontadistrict24.org Website-www.zontadistrict24.org

SPORTING GROUPS

Berry Hockey Club PO Box 4055, Nowra East NSW 2541 hj.simms@bigpond.com	0412 218 704 www.berryhockeyclub.com.au
Berry Netball Club 1 Barwon St Bomaderry Meets monthly at the Great Southern Hotel	0417 285 789 MT816834@bigpond.net.au
Berry Men's Bowling Club	David Armstrong 44641543 Harry Harrop on 44643043
Berry Junior Mixed Touch Football 7 Boran Place Berry 2535 School term 4 – Thursday 4pm till 6pm at the Berry Sporting Complex, North St Berry	0431 530 543 becandtom2@bigpond.com
Berry Riding Club 445 Coolangatta Road Berry 2535 jasiiy@bigpond.net.au	4464 1143 1st Tuesday monthly at the Berry Hotel www.berryridingclub.com
Berry Shoalhaven Heads Cricket Club PO Box 206 Berry NSW 2535 2nd Monday of each month during cricket season at the Berry Hotel	0422 688901 www.bshcc.nsw.cricket.com.au
Berry Shoalhaven Heads Junior League PO Box 162 Berry 2535 4th Wednesday Monthly, 7.30pm at the Berry Bowling Club	4464 1896 berrysjuniorleague@gmail.com
Berry Tennis Club PO Box 133 Berry NSW 2535 7.30pm bi-monthly starting in February each year, Berry Tennis Club, North St Berry	0419 299 234 e: berrytennis@hotmail.com

EMERGENCY 000

Police Assistance Line (non-urgent Police reports) 131 444
Berry Police 4464 2175 - Fire and Rescue NSW 4464 1008 or 000
Rural Fire Brigade (Broughton Vale) 4464 1522



BERRY GREAT FETE

9th November

Berry Public School is excited to announce the Great Fete to be held on Saturday 9 November 2013 at the school.

The fete will be held between 10am and 4pm and is shaping up to be a fantastic family day out. There will be rides, stalls, food, activities and entertainment. We will also be announcing the lucky winners of our raffle.

So lock the date into your diary now and join us at the Berry Great Fete!

Find out more, or like us on Facebook  www.facebook.com/BerryGreatFete



Council has been managing the Berry School of Arts for a year now and in those twelve months they have carried out more maintenance than had happened in the previous twelve years.

They have underpinned the rear corners, repaired the mortar, carried out electrical upgrades, repaired and painted the Music Room and the

Office and carried out numerous repairs and improvements. Well done!! Of course there is a lot more to do and Ann Sudmalis has confirmed that she is pursuing the delivery of the \$300,000 fund committed for the BSA which will be used to provide a commercial kitchen amongst other things.

ADVERTISEMENT

Some helpful tips on how to shop for a Real Estate Agent

Selling your home or property is one of the largest transactions most of us make in our lives, and getting the right agent is vitally important to achieve the best outcome.

To assess who is really selling the properties in your area, try using realestate.com.au and domain.com.au in both the 'FOR SALE' and 'SOLD' selections for your suburb. Many agents have a huge supply of stale and often overpriced properties, making them look active, when this is the reverse of what's true. Below are some questions you may consider asking an agent when you are thinking of employing them to sell your property.

- A. What was the initial asking price of their properties versus their final selling price. 'Buying' the listing by initially overpricing is unfortunately very common and often very damaging to the final selling price.
- B. Ask their average days-on-market to achieve a sale.
- C. Does the agent work weekends? Is their office open Saturday & Sunday as buyers are primarily active on weekends?
- D. Does your agent live close by to respond quickly to inspection requests. Many purchases from Sydney or Canberra have very limited time down in our region before returning to their busy lives many hours away.

Many sales people who were successful when the market was 'hot' now have a poor track record in the current tough conditions market. Most properties now need a much more skilled sales person to deal with hesitant purchasers, so it is imperative to check all agents recent results before making your final selection.

Finally, even though we are in a rural area, appropriately priced properties should sell within 3 months. Many agents have properties sitting for sale in excess of 1-2 years and those that finally sell tend to be at below true market value.



Principal - Graeme Smith: 0418 907 110
Office: 4465 1996

Email: kangaroovalley@harcourts.com.au
Address: 2/160 Moss Vale Road, Kangaroo Valley NSW 2577

View our properties at www.kangaroovalley.harcourts.com.au

BERRY COMMUNITY PRESCHOOL

Berry Community Preschool will be holding our

25th Anniversary Celebrations

on **Saturday 2nd November 2013** at the Pre-School
between 10am and 2pm



The focus of the 25th Anniversary celebrations is to invite all current and past students and their families as well as the Berry community 'back to preschool', as a thank you for their ongoing support. A number of activities will be happening throughout the day, including a photo/archival display of old preschool items; face painting; petting zoo; lucky dips; craft tables for the kids; a barbecue, wine stall and Devonshire teas.

A short ceremony will take place at 11am and will include the burying of a time capsule. This continues a great tradition which was started at the opening of the Pre-School 25 years ago! And what celebration would be complete without the angelic sounds of our current preschoolers as they perform a few songs for the visitors.

Berry Community Pre-school was officially opened on Saturday 8th October, 1988 by His Worship the Mayor Ald. Max Atkins with the burying of a time capsule.

In 1986 Berry Pre-School Kindergarten sought Council's assistance in obtaining its own premises as the Pre-School had been occupying the Church of England Hall in Berry. In 1987, Council resolved to purchase the land and construct a pre-school. The project was completed in May 1988 at a final cost of \$153,849. The pre-school has been operating successfully from this site since June 1988 and continues to provide a high quality and caring pre-school education for the families of Berry.



BERRY COMMUNITY PRE-SCHOOL VALUES THE ONGOING SUPPORT WE RECEIVE FROM OUR LOCAL COMMUNITY.

The South Coast's waterfront local



The best of BBQ, by the water. Relax on the Shoalhaven with delicious local produce, expertly crafted cocktails and an all day bar menu. Open for lunch and dinner Tuesday to Sunday. Join us for the Summer Sessions, weekly at 3pm, featuring live music and \$5 jam jar cocktails.

WHARF RD
RESTAURANT & BAR

A SMH Good Food Guide Awards 2014 hatted restaurant

10 WHARF RD, NOWRA | (02) 4422 6651 | ENQUIRIES@WHARFRD.COM.AU | WWW.WHARFRD.COM.AU

BERRY RESTAURANTS & CAFES, FUNCTIONS & CATERING GUIDE

The following businesses have provided Vouchers for the Berry Alliance to provide to Berry Community groups to use for fundraising purposes or prizes. If you would like your business listed here (and on the web site) please contact Rick Gainford, Secretary Berry Alliance on 0449 569 059 or email info@berryalliance.org.au

Restaurants & Cafes

Berry Jetz Café

1/94 Queen Street Berry - t 4464 3320
7 days - 8am to 5pm

Berry Sourdough Bakery and Café

23 Prince Alfred Street Berry - t 4464 1617
Open Wednesday to Sunday - 8am - 3pm.
www.berrysourdoughcafe.com.au

Hedgehogs Coffee Shop

4/98 Queen Street, Berry - t 4464 3051
7 days - 8am to 4pm
www.hedgehogscoffeeshop.com.au

Hungry Duck

85 Queen Street Berry 2535 - t 4464 2323
www.hungryduck.com.au
Wednesday to Monday dinner from 6pm

Just Delicious

Shop 3 / 62 Albert Street Berry - t 4464 3650
Open 7 days - 9am - 5pm.

Mezzadellas Woodfired Pizza & Tapas

Shop 6/97-99 Queen Street, Berry - t 4464 2045
Dinner: Monday to Saturday from 5pm and Sunday from 3pm
excluding public holidays

Savannah Café

Stan Burt Arcade (shop 5 - in the arcade behind Cuckoo Corner)
Open 7 days 9am - 6pm (8am weekends) Evening Dining Tuesday,
Friday & Saturday
T: 4464 3880 www.savannahcafebar.com
Facebook: facebook.com/savannahcafebar

The Berry Hotel

120 Queen Street - t 4464 1011
Open 7 days: Dinner 6pm - 9pm, Lunch 11:30am - 2:30pm
Breakfast on weekends 8am - 11am

The Berry Tea Shop

Shop 1, 66 Albert Street, Berry - t 4464 1218
Open 7 days: 10am to 5pm
www.theberryteashop.com.au

Silos Restaurant

640b Princess Hwy Jaspers Brush - t 4448 6160
Lunch: Thursday - Sunday.
Dinner: Thursday - Saturday www.silos.com.au

Functions & Catering

Berry Courthouse and Gardens

Corner Victoria and Albany Streets, Berry - t 0458 369 266
Functions, weddings, meetings inside and in gardens.
www.berrycourthouse.org.au,
email: functions@berrycourthouse.org.au

Berry Jetz Café

1/94 Queen Street Berry - t 4464 3320
berryyetz@bigpond.com
Catering and Functions available

Broughton Mill Farm Guesthouse Berry

78 Woodhill Mountain Road Berry - t 4464 2446
Weddings, functions and conferences hosted and catered for on site.
www.broughtonmillfarm.com.au email: bmfberry@bigpond.net.au

Garnish Creative Catering

t 0432 559 078
Jo Jorgensen
www.garnishcatering.com.au

Savannah Café

Stan Burt Arcade (shop 5 - in the arcade behind Cuckoo Corner)
Open 7 days 9am - 6pm (8am weekends) Evening Dining Tuesday,
Friday & Saturday
T: 4464 3880 www.savannahcafebar.com
Facebook: facebook.com/savannahcafebar

Pavilion Restaurant fully licensed

72-76 Queen St Berry NSW 2535
Ph: 02 4464 1074
Email: restaurant@berrymotel.com.au



Fine Food & Wine
in a Relaxed Atmosphere
Emphasis on Local Produce.

Dinner Tuesday-Saturday
Breakfast Tuesday-Sunday
Available for Special Functions

MONDAY - FRIDAY \$37 MENU AVAILABLE
www.berrymotel.com.au

Christmas Cocktail Parties on the verandah overlooking the lights of Nowra



only at ...

The Lookout Cambewarra Mountain

Book your Christmas function now !

open 7 days
Sat & Sun - breakfast with the birds from 8:00am
off Tourist Rd 4465 1321

BERRY AND DISTRICT HISTORICAL SOCIETY

EXTENDS BY

POPULAR DEMAND THE DISPLAY FOR:

THE CENTENARY OF THE BERRY FOOTBALL CLUB INCORPORATED

Don't miss the mighty Maggies!

Visit the Berry Museum before mid November to find out what your favorite team has been up to for the last 100 years. There will be several generations of players photos as well as other memorabilia on display.

135 Queen Street Berry Ph: 4464 3097
www.berryhistory.org.au
Berrymuseum@bigpond.com

OPENING HOURS

Saturday 11am to 2pm

Sunday 11am to 3pm

ALSO OPEN BY ARRANGEMENT OUTSIDE THESE HOURS SO
 CONSIDER A VISIT TO THE MUSEUM AS A
 SPECIAL EVENT FOR YOUR GROUP.

HAVE YOU CONSIDERED BECOMING A MEMBER OF THE
 BERRY AND DISTRICT HISTORICAL SOCIETY TO HELP RUN
 THE MUSEUM, ATTEND TALKS AND LECTURES ON LOCAL AND
 FAMILY HISTORY AND ASSIST WITH DISPLAYS AND RESEARCH?

AS A MEMBER YOU WOULD RECEIVE THE CHRONOGRAPH,
 THE HISTORICAL SOCIETY'S
 NEWS AND INFORMATION BULLETIN. CONTACT US ON THE
 EMAIL ADDRESS ABOVE TO JOIN UP

NSW Rural Fire Service: Bush Fire Safety

Bush fires are a natural part of the Australian environment and occur regularly, but many people fail to prepare for them. When threatened by bush fires, people will often leave it too late to make critical decisions and often have few safe options left.

During a bush fire, fire-fighters will be working to stop the fire, but the size and intensity of a fire could mean that a fire truck may not be available to defend your home. It is your responsibility to reduce the risk to your family and your home and take actions to survive a bush fire. The most important decision is whether you and your family will Leave Early or if you will Stay and Defend your well prepared home.

The majority of deaths during bush fires result from people trying to leave their homes at the moment. Leaving late places you at greater risk of getting caught in your car and suffering from smoke inhalation or extreme heat in an area where a bush fire can start, leaving early on Catastrophic fire danger days is your only safe option. On any other day you should only Stay and Defend if you have a well maintained property and if you are physically, emotionally and mentally prepared to defend your home.

Your Bush Fire Survival Plan can help protect the lives of your family and will also give you information about the ways in which you can best prepare your home to survive the threat of a bush fire.

If your home is not directly at risk from a bush fire, there are still some general actions you should take to protect you and your family:

1. Make sure your family has a general understanding about bush fires and bush fire safety. If they are in an area that is

affected by a bush fire, such as at work or on holiday, they will be able to make the safest choices.

2. Make basic preparations to your home. Embers can travel many kilometres ahead of a fire, so even if you are not directly threatened by a bush fire, you may be impacted by embers. Preparing your home can reduce the risk of embers starting spot fires around your home.
3. Keep yourself informed on days of increased fire danger. You should get into the habit of paying attention to your local radio and TV stations on hot, dry, windy days. This will help you plan your day and make sure you avoid areas where there is an increased risk of a bush fire.

Your home may be at risk...

If your home may be at risk of a bush fire you need to have a Bush Fire Survival Plan. Your Bush Fire Survival Plan will help you make decisions that will give you and your family the best chance of surviving a bush fire.

These decisions include:

1. How will you Prepare - Act - Survive?
2. Will you Leave Early or will you Stay and Defend?
3. What will your triggers be to act?
4. What will your back-up plan be?

For more information on Bush Fire Safety and tips on keeping you and your loved ones safe in the event of a bushfire, visit
<http://www.rfs.nsw.gov.au>.

BerryHaven Veterinary Group



www.berryhavenvet.com.au



FREE House Call Service

BHVG offers house calls at no extra charge and a FREE pet transport, food, medication & merchandise drop off service. Ph (02) 4464 3986 to book.



FREE Nail Clip and Nurse Pet Nutrition & Health Programmes

Drop in and visit Rebecca or Joy at our clinic for a FREE Pet Nutrition & Health programme. Our nurses will discuss best feeding practices, weight control, arthritis diets etc. and give a FREE nail clip to boot!



You Tube



1/78 Albert St. Berry. NSW 2535

Mon-Fri 8am - 5.30pm

Sat 9am - 10.30am

OPEN ALL DAY WEEKDAYS

24 Hour Emergency Cover

Ph (02) 4464 3986



Ticks Transmit Lyme Disease

Described as the great imitator, Lyme disease often mimics other disorders e.g. Multiple Sclerosis, Chronic Fatigue Syndrome & Alzheimer's. For more info go to www.berryhavenvet.com.au



Pet of the Month

Max, a 76kg Great Dane had a very close call last month with Gastric Dilation & Bloat. He made a great recovery from emergency surgery (although Mark's back hasn't) and from the photo, he is one happy fella.





It was with great delight, and to rousing applause at last month's meeting, that Hazel King was presented with The Garden Clubs of Australia Ann Williams Clark Medallion for Outstanding Service by a Club Member. As the Garden Club's resident expert on all things gardening, the award is a well-deserved acknowledgement of Hazel's nationally-recognised horticultural achievements and her remarkable commitment to the people and gardens of the Berry district. Hazel's generous nature and sense of humour continue to make her a very special part of the Berry & District Garden Club.

Club members were at their social best during the past month learning from garden experts, exchanging information and enjoying the company of gardeners from near and far. About thirty Club Members joined the four hundred-plus crowd at Zone Friendship Day in Ulladulla to hear guest speakers, Paul Kirkpatrick (Estate Gardening), John Siemon (Australian Plantbank) and Costa Georgiadis (ABC Garden Show) as well as enjoying an abundance of plant and vegetable stalls. Club members also hosted a visit from the Circular Head Garden Club of Tasmania on a garden ramble around Berry which was a great success.

The November Club meeting, the last for the year, is always a very special occasion with the funds raised during the Berry Garden Festival presented to representatives of the

charities and organisations that have been nominated by the owners of the Festival's featured gardens. There will also be two guest speakers at the meeting; Club member, Carol Hampson will speak about The Melbourne Flower Show and Vice President, Erica Lovelock on the Official Opening of the Australian Plantbank. The Garden Club is planning visits to both venues in 2014.

The next meeting will be held on Tuesday 19th November at 7.30pm in the Activities Room of the Berry Masonic Village, Albany Lane, Berry. Everyone is most welcome to come along to the meetings to meet other gardeners, hear guest speakers and enjoy supper in the company of like-minded locals. More information is available from Adrian Bishop on 4464 3965.

Jennifer Mors



Hazel King with her medallion for Outstanding Service by a Club Member.

Hazel King's Garden News

Her Excellency Professor Marie Bashir, Governor of NSW officially opened The Australian Plantbank at The Australian Botanic Garden, Mount Annan on Friday, 11th October. The Berry & District Garden Club was invited to the ceremony - Vice President Erica Lovelock and Hazel King represented the Club; both are members of Foundation & Friends of the Botanic Gardens. This invitation was extended to the Club because of two contributions given to Plantbank from proceeds of recent Berry Garden Festivals. Plantbank is a magnificent world-class science facility which will enable our scientists to tackle plant conservation and better address conservation and diminishing biodiversity of the Australia and Asia Pacific region.



Garden and lawn maintenance
Hedging and pruning
Tree lopping
Acreage management
Garden design and makeovers
Green waste removal

Mob: 0431 342 382
Ph: 4234 2383



LLOYD REES IN TEXTILES

*a recycling
experience*

It's quirky! It's fun! It's about recycling!

Come to the Lloyd Rees exhibition at the Shoalhaven City Arts Centre to see iconic Lloyd Rees landscapes interpreted in recycled textiles.

This innovative project, created by Shoalhaven City Council Waste Services, highlights the concern around the 1000 tonnes of textiles disposed of each year in the Shoalhaven. The St Georges Basin Creative Craft Group and Nowra Quilters have worked on interpreting a number of landscapes which are part of the exhibition.

The works will be on display in the Shoalhaven Arts Centre meeting room during the Lloyd Rees exhibition and also at the opening of the Lloyd Rees Festival in Gerringong on **31 October**.

LLOYD REES: WORKS FROM THE SOUTH COAST

Over more than 40 years, renowned Australian artist, Lloyd Rees sought retreat and inspiration in the landscape of the South Coast. Some of his best-known works are proudly exhibited as a constituent of the Lloyd Rees Festival.

Shoalhaven City Arts Centre, Nowra

26 October – 14 December. Launch: Sat 26 October 12–2pm

www.shoalhavenartscentre.com.au

Above: textile work by
Nowra Quilters (detail)



Get it Sorted.

SHOALHAVEN CITY
arts centre



LANDCARE BERRY

Vines: This Spring saw the best display of native flowers for some years. Particularly notable were the white flowering native vines, Wonga Wonga Vine (*Pandorea pandorana*) and Travellers Joy (*Clematis aistata*). They were in bloom for weeks. There is a large variety of native vines to be found in the Berry Area. Typically Native Silk Pod or Parsonia, Native Milk Vine or Marsdenia (often confused with the weed Moth Vine, but with a prominent white mid vein), Kangaroo Vine (also known as Native Grape), Guinea Flower or Hibbertia (beautiful big yellow flowers at the time of writing), Dusty Coral Pea (*Kennedia rubicunda*), False Sarsaparilla (*Hardenbergia violacea*), Apple Dumpling (*Billardiera scandens*), Wombat Berry (*Eustrephus latifolius*), The rare red flowering Native Passionfruit (*Passiflora cinnabarina*) and many more. They can be identified by the Landcare Native Plant Identification Service (contact Bill Pigott, Ian Parker or Harvey Blue).

There is an interesting relationship between vines and forest trees. The trees do the hard work investing much of their energy creating trunks and branches to enable them to grow up to the canopy. The vines on the other hand with a minimum of investment, scramble up to the top of the forest producing great flushes of leaves to bask in the sunlight. Lianas or woody vines can grow to be hundreds of metres long and half a metre thick. The vines cannot survive without the trees but the trees are compromised sometimes to their death by the vines. Vines are becoming more prevalent not just because of the introduced species like Morning Glory, Madeira Vine and

Moth Vine but as a result of increased carbon dioxide in the atmosphere. Tree regeneration is becoming more dynamic with trees dying and regenerating more rapidly. This favours the vines. Vines hit slow growing young trees far harder than the small fast growing varieties e.g. the difference between red cedar and fast growing pencil cedars. This will result in a change in the composition of forests. If your native tree seedlings are being overwhelmed by native climbers it is preferable to cut the climber at ground level and allow the tree to get a head start. This will not kill the climber just set it back a season. Studies in Central American rainforests indicate we are heading for a planet of vines. For more on this see "New Scientist" issue 5 October 2013, "Planet of the Vines".

Weed of the Month:

Japanese Honeysuckle: This vine is a popular garden plant. Flowers are sweet scented, fruit are black berries that are poisonous to humans. Seeds are spread by birds or escape gardens in rubbish. It also spreads as a ground cover. It should be pulled down from supporting trees. Spraying when growing as ground cover should be done with care. Alternatively stem scrape and paint immediately with roundup.



Working Bees for September:

Bong Bong Road,
9-11am Sunday 10th November;
Broughton Vale,
2-4pm Sunday 10th November;
Princess Street Park,
2-4 pm Sunday 17th November;
Mark Radium Park,
9-10 am Friday 22nd November;
Bundewallah,
Sunday 2-4 pm 24th November.
Other work days will be advised by co-ordinators.

For further information:

Bong Bong Road -
Julia Woinarski (4464 2084)
Broughton Vale -
Philip Thorniley (4464 2198)
Bundewallah -
Will Armitage (4464 2241)
David Berry Hospital -
Kim Dove (4464 3391)
Mark Radium Park -
Rodney Cole (4464 1475)
Moeyan Hill -
Bill Pigott (4464 3241 or
wpigott@bigpond.net.au)
Princess St Park -
Diana Coxhead (0433 213 219)
Strongs Road -
Ian Parker (4448 6359 or
ianlindap@shoalhaven.net.au)
Tindalls Lane -
Harvey Blue (4464 1880)

Information can also be found at
Berry Landcare on Facebook



EASTCOAST ULTIMATE CUSTOM MADE BUILT IN WARDROBES

14a Cumberland Ave – SOUTH NOWRA
(just up the road from the RTA)

PHONE: 02 44210543

www.eastcoastultimate.com.au



As owners of East Coast Ultimate for over 20 years, Phil and Keren Rice pride themselves on delivering an excellent product for a reasonable price.

Our products are locally manufactured and designed to suit each individual home.

We offer a free measure and quote no matter how large or small the job.

Come in and visit our modern showroom, look up our web site or invite us out for a quote.

We look forward to hearing from you.

Great Southern Hotel



Entertainment

FRIDAY
great line
up every
week!

- Like our 'Great Southern Hotel' Page on Facebook to see what's happening
- For Muso's Jam sessions check out Great Southern Hotel on Facebook

Trivia - Thursday Nights

- Like our Facebook page to get details
- Come along and challenge the grey matter. It's a good fun night out!

from
7pm

BOTTLESHOP Check in store for Regular changing Specials.

Bistro

Monday – Friday **\$10** meals Lunch and Dinner

* Excludes Public Holidays

Includes Chicken Schnitzel w. Gravy & Chips
Changing Spring Blackboard Menu

GREAT SOUTHERN HOTEL BERRY • 4464 1009

BERRY EVENING Voice Interest Education Women CLUB NEWS

In September, we always celebrate International Night and this year the country was Morocco. To our advantage, our Vice President, Patricia Vassallo had just returned from Morocco and Pat gave us a very interesting talk on the country and its history and also had some items of craft etc from the country. Thank you Pat. Pat also was acting President for the night as our President Betty was away.

In my report for our 32nd Birthday night in August, I didn't mention two items of importance. We had two badges presentations. Firstly to Sue Hinkley was presented with her 30 year badge and Jean Ward with her 10 year badge. Thank you to Sue and Jean for your time and help with our Club.

At our September meeting we had a new member join us. Margaret Bull had been with VIEW at a previous Club but had now joined with Berry. Thank you Margaret and we hope you enjoy our Club.

Delegate Heather gave a very interesting report on our Convention, this year held on the Gold Coast. Approximately 750 ladies attended with very interesting speakers. Our National President Lorraine Montgomery mentioned that the Winter Appeal for the Smith Family had a great response and that the Learning for Life sponsorship now totals 1033 students. New VIEW Clubs have been formed in Queensland, Victoria, Western Australia and a Gold Coast Breakfast Club also. I think the best of all is that in 2015 the Convention will be held in Wollongong. Much closer for many people. Several years ago I went for one day to Sydney and the guest speaker was Leonard Teale – I am sure you will remember him and his speaking voice. It was a great day. Thank you Heather for your much very comprehensive report.

Don't forget our Coffee Mornings on the first Thursday of each month. We had two new ladies last week and I hope they enjoyed the morning and, maybe will join with us again.

Our next morning will be on 7th. November at Laura's on Queen. Hope you see everyone.

Our November meeting we have been asked to bring money in an envelope to go to The Smith Family Toy Appeal and our January social meeting will be held on Wednesday 15th. January at the Great Southern Hotel. No need to book, just turn up at 6.30pm and order from the menu.

Pamela Coles
Publicity Officer



Congratulations - Sue Hinkley received her 30th year membership badge at our Birthday meeting in August



Welcome to Margaret Bull. Margaret received her membership badge from Vice President Patricia Vassallo.

ghem
HAIRWORKS

*Total Attention
Total Care
Total Confidence*

Specialising in cut,
colour and bridal styles.

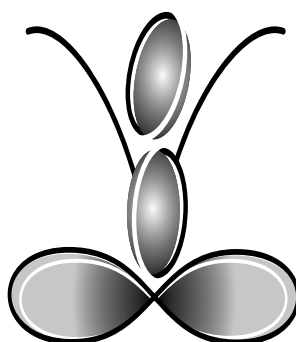
Make up artist available

Now specialising in Brazilian Keratin
Treatment, get that smooth frizz free
hair you have always wanted

Products
KMS
Redken
Juice

44642711

Shop 2 119 Queen Street, Berry



wholebody
PHYSIOTHERAPY

Mary Pentecost

Dedicated to your wellbeing...

wholebody PHYSIOTHERAPY

has been in Berry for over 10 years. Recently we changed our logo, but our service remains the same. Our experienced staff understand and treat a variety of conditions. But most importantly, we are dedicated to your wellbeing.

Treatment for:

- Acute/chronic conditions
- Headaches/back and neck pain
- Biomechanical postural assessment
- Exercise prescription/pilates emphasis
- Gaitscan for foot assessment/orthotics
- Incorporating acupuncture

Open Hours

Mon, Wed-Fri 8.30-5.30pm

Downstairs, 84 Queen Street Berry NSW 2535

Phone: 02 4464 2874

Berry Town Crier Advertising Rates & Requirements

Why advertise in the Town Crier?

The Town Crier is a community newspaper produced monthly by the Berry Alliance. Our current circulation is 2300. The Town Crier is distributed around Berry and its outer lying areas. Additional copies are given to shops, cafes, hairdressing salons, doctors and restaurants within the township to alert tourists as to what's happening in and around Berry.

The Town Crier is not funded from any other source; we receive no grants or public funding.

Berry Alliance Town Crier Board of Editors

Display Advertisements

Repeat rate applies to 3 or more issues with no changes and one invoice to be paid up front.

10cm x 1 column	\$105 / \$240 (repeat)	Dimensions - 10cm high x 6cm wide
10cm x 2 columns	\$133 / \$321(repeat)	Dimensions - 10cm high x 12cm wide
10cm x 3 column	\$176 / \$411(repeat)	Dimensions - 10cm high x 18.5cm wide
Full Page	\$290 / \$798(repeat)	Dimensions - 27cm high x 18.5cm wide

Trades & Services

One box, no changes, one invoice paid up front. Dimensions are 6cm wide x 5cm high

1 issue	\$48
6 issues	\$198 (\$33 each issue)
12 issues	\$363 (\$30.25each issue)

Calendar of Events page

One box, no changes, one invoice paid up front

1 issue	\$60
6 issues	\$276 (\$46 each issue)
12 issues	\$504 (\$42 each issue)

Listing in Calendar of Events

Free if the event is listed in your paid advertisement for that issue.

You must request the listing at the time of submitting your advertisement.

Otherwise: \$30.00 per listing only.

Full Length Column Advertorials

Advertorial can be used for local business owners and/or community groups not registered with the Berry Alliance to promote their fundraising event.

Advertorials must be of interest to the Berry community in the opinion of the Editor and Board, not just an advertisement. Could be information on a new business or a special event or similar.

1 full column	\$175 (max 400 words, less words when a logo or photo is used)
2 full columns	\$220 (max 800 words, less words when a logo or photo is used)

BERRY SPORT AND RECREATION CENTRE

COME & TRY Mornings



The Berry Sport and Recreation Centre would like to get to know the local community by inviting YOU to experience different activities every Saturday morning between October 2013 - February 2014.

So gather your friends and enjoy a different activity conducted by our qualified instructors each week. All equipment is supplied. Bookings are essential by the Wednesday prior.

Cost \$23 per person

First Saturday of the month	Explore Broughton Creek by canoe	8.30am - 11.30am	7 years and over**
Second Saturday of the month	Archery	9am - 12 noon	7 years and over**
Third Saturday of the month*	Climbing wall/vertical challenges	9am - 12 noon	7 years and over**
Fourth Saturday of the month	A variety of at-height activities to challenge you	9am - 12 noon	13 years and over

*No activity third Saturday in January 2014. **7 - 12 years need to be accompanied by an adult.

Sport and Recreation supports community wellbeing. We also offer:

- Self-contained accommodation ■ Group accommodation
- Holiday camps ■ School camps.



For more information visit www.dsr.nsw.gov.au or phone 4464 1406

Berry Ethics
just think about it

BERRY ETHICS SOCIETY We're back!

It has been a while since our first edition ... apologies. Procrastination is not a virtue, but is in plentiful supply, unfortunately.

More on that later ...

First, a couple of announcements:

1. We will be having our first meeting of the Berry Ethics Society on Monday, 4th November at 7pm at the Berry Pub (The Coach House). The idea is to get together on a monthly basis to discuss/debate a thought-provoking issue. This will be loosely based on the "Great Decisions" civic-education program (http://www.fpa.org/great_decisions/?act=gd_main), but with an Australian flavour. The current Quarterly magazine might be a good place to start!

If you are interested in attending, please drop a note to berry.ethics@gmail.com, or just come along on the night and join us for a think and a drink.

2. We're looking for additional ethics teachers who are prepared to give up an hour each Wednesday morning to lead an ethics class for students at Berry Public in 2014, especially for Stage 1 (years 1 & 2).

If you are interested, check out the following link (www.primaryethics.com.au) and register on the website. You don't have to be a parent to teach Ethics.

So while we (at Berry Ethics) might have been procrastinating in 2013, the Primary Ethics program has been very busy.

At the time of writing, Primary Ethics is just a few volunteers shy of the extraordinary

milestone of 1,000 active volunteers across the state of NSW. There are over 200 schools in the program now. This is a doubling of the size of the ethics program at NSW schools in the last 12 months.

In 2014, the plan is to add another 1,000 ethics teachers. Here's a peek into what the program is doing:

Wilkins Public School is one of four public primary schools in the inner western Sydney suburb of Marrickville. In early 2011, there were around 660 children enrolled in the school and about half of these children were in non-scripture. Fast forward to September 2013 and 216 children from Years 1-6 are enrolled in ethics classes at Wilkins, where nine volunteer ethics teachers take 12 Primary Ethics classes every Wednesday.

Shona Charleston is Wilkins' Ethics Coordinator who volunteered in mid-2012. "I was quite sad to see kids sitting in the library during non-scripture time, but they weren't allowed to touch the books and were just wasting time. When Primary Ethics started, I was excited to see something meaningful finally being offered to the children," she says.

It is inspiring watching Primary Ethics go from strength to strength as the months progress - more than enough to inspire me to stop procrastinating on the Berry Ethics Society.

Christopher May
(Ethics Coordinator)

Berry Ethics
just think about it

Leprosy Mission Auxiliary News

Well here we are into another month and finding it hard to believe it is nearly to the end of another year.

The auxiliary has been fortunate to have the DVD of the Hidden People, showing us information regarding the hardships that folk with leprosy have in their own environment.

They are called the "locked aways," the hidden people. Sometimes younger, sometimes older they are simply people whose families don't want to acknowledge them because of their disability. The stigma of leprosy never goes away and when a person is diagnosed they are often rejected by their family and kept out of sight.

The leprosy mission's aim is to seek out and care for the hidden people and bring them back into the community. Through the work of the auxiliary we are able to raise funds that go towards the provision of medical aid and support, including education and programmes that aid the community in self-help opportunities, self-education workshops for people who are affected by leprosy as well as construction of housing, and toilets.

This last month we were thrilled to learn that Optus has a programme called 'Workplace Giving' programme, set up for their employees to nominate a charity of their choice, and give to it, which the company will match dollar for dollar, and the Leprosy mission is one of those listed. How great is that? Maybe some of our local companies could also take up this opportunity to support groups such as the mission.

Our next fundraising will be our Christmas street stall to be held on Saturday the 14th December in Broughton Court, commencing at 8.am. We look forward to you support. If you wish to order Christmas cakes please contact Trish on 44641693 or 04011551820 to order all cakes are homemade and cost \$35.00 for a large fruit cake.

The combined charity card shop will be run in Kiama the 12 November till the 6th December in the Old Council Chambers open between 10.am to 4 pm each day.

May we take this opportunity to thank you all for your ongoing support of the auxiliary over the past years.

Trish Nicholson trishr.n@optusnet.com.au



FOR A WORLD WITHOUT LEPROSY



belle
PROPERTY

Real Estate

COMPILED BY GARY DALE, PRINCIPAL OF BELLE PROPERTY BERRY

Market Value - What's that?

The purchase of real estate usually has two key components; one is emotional and the other financial.

Most home buyers (as opposed to investors) want to feel a strong attraction to the property they purchase. After all, they are going to live in it. But they also have to make the right investment decision because their enjoyment of the property can be spoiled if, further down the track when they go to resell, they realise they paid too much or made a poor investment.

The key to both financial and emotional success is doing your homework thoroughly before you purchase. You can speed up the research process by making sure you look at all the properties that satisfy your basic criteria, including those that don't sound like your ideal home.

Even properties that don't appeal to you are relevant for building up a portfolio and getting a handle on price trends. Many intending purchasers turn down the opportunity of inspecting properties in their price range simply because they 'don't appeal'.

But the more properties you see in your price range in a short space of time, the sooner you will be ready to buy. And you're less likely to end up seeing your 'dream home' early in the search and feeling you're not ready to make an offer.

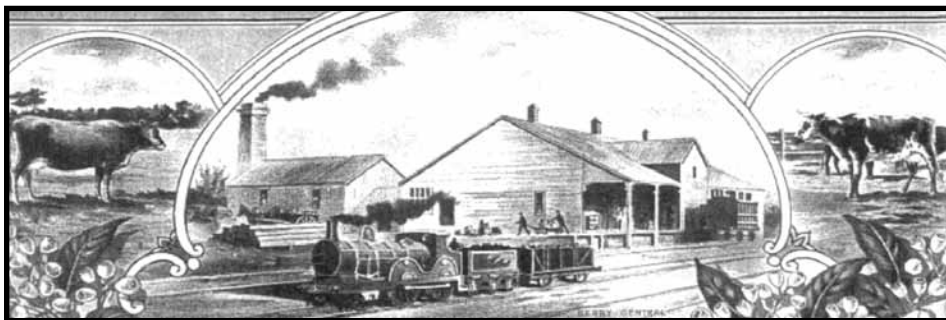
Take a notebook to the inspections and jot down your comments about the property so that you can later compare. After viewing a few properties - you'll soon get muddled on what you liked and didn't like about them.

Use every available information resource. When

you see a signboard with a sold sticker on it, ring the agent and find out how much it sold for. Make sure that you follow up on all of the properties that you have inspected. Did they sell quickly and if so how much for? The most professional agents will provide information about recent sales.

Remember you need to look at a lot of properties to feel confident you see a trend or pattern emerging. If you know what ten or twelve properties have actually sold for within a ten thousand dollar range of your budget, you're probably ready to walk into a house and say, 'I like this one and I'm prepared to pay x dollars for it'.

FOR FRIENDLY, PROFESSIONAL ADVICE REGARDING ANY REAL ESTATE MATTER, CONTACT ME ON (02) 4464 1636 OR CALL INTO OUR OFFICE AT 122 QUEEN ST, BERRY.



OLDCREAMERY LANE COMPLEX

ESTABLISHED 1895
OLD CREAMERY LANE • BERRY

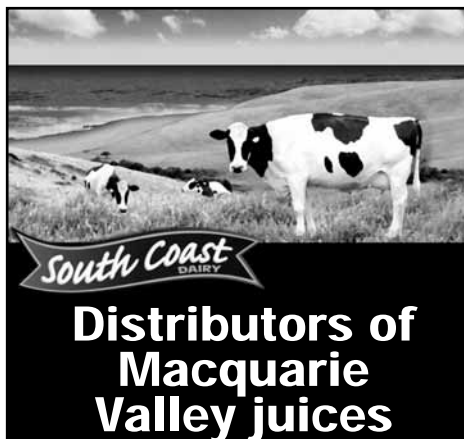


We stock a comprehensive range of Gardening Products, Hardware, Agricultural Products, Stockfeed's, Hard Yakka Clothing, Rossi & Baxter Boots, Wet Weather Gear and Electrical Fence Equipment.

IN STORE PRODUCTS

Wild Bird Mix 20Kg
Pool Chlorine Liquid 20Lt
Layer Pellets 20Kg
Sulphate of Ammonia 25kg
Gypsum 25kg
Pool Salt 25kg
Pool Chlorine Granular 4kg
Snail Pellets 1kg
Coprice working dog 20kg
Shavings Pine 18kg
Parrot Mix 20kg
Potting Mix 30litre
Sugarcane Mulch 240L
Mushroom Compost 30litre
Pure & Healthy Honey 250g, 500g, 1kg
Straw hats
Sudden Impact Rose 10kg
Sudden Impact Lawn 10kg
Assorted Coloured TUBS 40L
Now stocking Green Line poly pipe and fittings plus blue line pressure pipe and fittings

OPEN: MON-FRI
8.00AM-5.00PM
AND SAT 8.00AM-NOON
OLD CREAMERY LANE, BERRY
PHONE 4464 1209



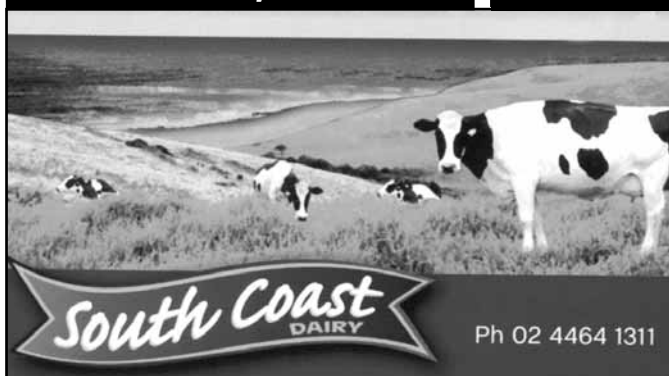
SAVE \$\$

Berry Rural Co-op Self Storage

ALL GARAGE SIZES
Phone us last for
the best price

4464 1209

Old Creamery Lane Berry



www.southcoastdairy.com.au

The Treat Factory

60 years of a Family tradition



MANY PRODUCTS MADE RIGHT HERE ON PREMISES

- Gift Box chocolates, rocky road, marshmallow
- Honey, preserved fruits in liquor • Over 50 varieties of jam preserves, chutneys, pickles, vinegars and sauces.

OPEN 7 DAYS

OLD CREAMERY LANE - PHONE 4464 1112

Berry Automotive Repairs

Phone: 4464 3999
Mobile: 0417 251 205
2c Old Creamery Lane Berry

CARS - 4WDS - TRUCKS

- Late Model & Fuel Injected Vehicles
- Brakes, Steering and Suspension
- Servicing, Repairs & Registration Inspections

www.wroughtirongates.net.au



**BUSINESS
FOR SALE**



THE VILLAGE FORGE™

PHONE FAX 02 4464 3333 MOBILE 0402 418 888

WEB www.villageforge.com.au EMAIL info@villageforge.com.au

**Keep it
local!**
buy South
Coast Milk

Canine Cardio

Dog Walking & Animal Home Care

Dog Walking | Pet Minding | Doggy Daycare | Overnight Stays

Annette Brooker

0418 477 438

info@caninecardio-homework.com.au
www.caninecardio-homework.com.au



Television Antennas SHOALHAVEN ANTENNAS

Servicing Berry and surrounding areas.

- Digital Upgrades
- New Installs
- TV Tuning
- Repair existing systems
- Add Phone/TV Outlets



Phone: 0410 526 672
Fax: 02 4422 6672

berry physiotherapy

dr chambers' practice
alexandra st, berry

belinda henry
mark burns

branch practice of
gerringong physiotherapy

ph 4234 4666



Mountain Echo Landscape & Horticulture

- Landscape Design & Construction
- All Aspects of Garden Maintenance
- Fruit & Veg Production
- Broad Acre Property Management

Katie 0424 236 235 Ryan 0409 743 828
contact@mountainecho.com.au

Mark Collins

Lawn Mowing Service

Domestic & Commercial

Fully Insured

M: 0401 571 228

ADN: 88 646 587 820

P: 4423 6448 e:markneidi@optusnet.com.au



Berry
Chiropractic

~ Specialising in gentle,
low force techniques ~

SAFE, EFFECTIVE TREATMENT FOR:

- All ages; from babies through to the elderly.
- Headaches/migraines
- Back/neck pain
- Postural problems
- Whiplash
- Scoliosis

EFTPOS available
HICAPS now available

Phone: 4464 3414

Arborist

Complete Tree Removal & Care

Reliable Professional Service

Mulch Sales

Stump Grinding

Fully Insured

Dave Kelly

0423 903 946

All aspects of professional tree care.



Ian's Interior Linings



★ All plasterboard &
fibrous plastering

★ Commercial & Domestic

M: 0418 220 751

E: willey63@bigpond.com.au

Country Quilts, Curtains & Blinds

Shop 4, Berry Stores, 97 Queen St Berry

(entrance in Alexandra Street)

All window fashions and soft furnishings

Drapes, Pelmetts, Tracks and Rods

Blinds: Timber, Roller, Roman

Free measure and quote

Open Wed to Saturday 10am-3pm

Mob: 0414 983 757

THE BOUTIQUE GYM

Personal Trainer Jen Miller

117 North Street,
Berry NSW 2535

☎ 0413 648 943

jenmiller65@hotmail.com



Qualified Gardener



- Pruning
- Weeding
- General Maintenance

Phone Sidney
0420 245 143

Four Legged Friends PET FEEDING SERVICE

For Horses, Dogs, Cats, Birds
& all other domestic pets

Megan White
dip in animal care

Ph. 4464 2472 / 0407 407 328

info@fourleggedfriends.com.au

Established: 1995

• FEEDING • EXERCISING • RUGGING •
GARDEN • MAIL • GARBAGE

www.fourleggedfriends.com.au



Gerringong Garden Maintenance



Mob: 0431 342 382
Ph 4234 2383

For all of your gardening and lawn needs.

HAMILTON EARTHMOVERS

Excavator

Bobcat

12 Tonne Tipper

Cut & Fill

Footings

Auger Drills

Rock Grabs

Rubbish Removal

Road Bases



Ph: 4464 1531

Wayne

0424 399 094

SNB

S.N.BICKERSTAFF

scott@snbuilders.com

MASTER BUILDERS

LC 35214

New Homes, Extensions

Renovations and

Alterations

www.snbuilders.com

ph 44 642 046

mb 0419 614 146

TRADES & SERVICES *Directory*



MICHAEL HILL
PAINTER & DECORATOR
Quality Work Guaranteed

Domestic Commercial Industrial

ABN 95 969 204 488 Lic No 121389C

0402474569

Specialising In

- New/Old work
- Feature Walls
- Roofs
- Texture Coating
- Heritage



MORROW
BUILDING SERVICES
tomorrows future, built today

Building in Berry and surrounding areas
Architecturally designed new homes
Extensions & Alterations, Renovations,
Bathrooms, Pergolas & Decks

Paul Morrow 0413 887 042
Email: morrowbuilding@hotmail.com
Lic: 141931c

Total Gate Solutions
For all your Gate Automation needs

- Installation & Service of Gate Automation
- Solar & 240V
- Farm, Domestic & Commercial
- Wireless Intercom Installation

Phone Lee
0409 322 491



OPC
CONSTRUCTIONS
quality building, extensions & renovations

new homes
extensions
first floor additions
renovations
architectural & detailed joinery
decks & pergolas
retaining walls
truck & bobcat hire

BERRY
0414 502 513
ao.carter@bigpond.com
lic.no. 119313C



BERRY REMOVALS

LOCAL • COUNTRY • INTERSTATE
Experience a New Level of Professionalism
Phone 04 2864 3557 or 4464 3557



B&B
BORG BARTER
LANDSCAPES

CONSULT DESIGN CONSTRUCT MAINTAIN

Gerrington SLADE BARTER 0402 255 115
Shoal haven Heads MATT BORG 0409 735 484

N Hartman Bookkeeping

- Payroll
- Creditors
- Debtors
- BAS & IAS
- Finance Reports
- Computerised or manual
- Reasonable rates

Nerida: 0427 488 447
e: nhartman@shoal.net.au

Handyman
HONEST - RELIABLE - INSURED

Specialising in: Painting, Plastering,
Home Maintenance, Pressure
Cleaning, Flyscreen Replacement
Selling or renovating your home?
Good Advice & Free Quotes

CALL COL WHITEHURST
0400 135 128



hand made web.

Local design service

- Websites & online stores
- Search engine optimisation
- Facebook pages & email newsletters
- Logos, stationery & packaging
- Brochures, ads & posters

Check out our portfolio online
www.handmadeweb.com.au
0447 674 919

TERMITES!

- ▼ Pre purchase termite inspections and reports
- ▼ Termite barriers new & existing buildings, council approved
- ▼ Thermal imaging and microwave inspection tools
- ▼ Termite Baiting Systems

FREE QUOTES Call
TERMITE SOLUTIONS-
4448 5444
termite experts

Fully Licensed, Accredited & Insured
Family Business with over 20 years experience

SPACE AVAILABLE
CONTACT THE EDITOR
0428 037 572
towncrier@berryalliance.org.au



MISS SPARKLES
SHOALHAVEN
External House Cleaning
HOUSES FROM \$148

- ★ Environmentally Friendly
- ★ House/Driveway Packages
- ★ Removal of Cobwebs
- ★ Patios and Driveways
- ★ Mildew Treatment
- ★ Windows/Screens included
- ★ Commercial work
- ★ Seniors Discount

Phone Dennis for a free quote:
0407 642 256
Now Offering: Internal Window Cleaning &
Licensed/Insured Electrical Work (Lic No. 209514C)

Vaughn's Lawn & Garden Service



- Local knowledge
- Professional service
- Fully insured

0408 863 776
www.vaughnsgardening.com.au

ELECTRICAL CONTRACTOR



EEPS
Lic. No. 133674C

DOMESTIC & COMMERCIAL
Solar Power Installation
Home Automation Systems
Security Lighting
Pools & Spas
Hot Water Systems
Oven & Stove Repairs
Safety Switches
Smoke Detectors

Contact peter today!
0412 594 907 | 4464 1993
ENDEAVOUR ENERGY AUTHORISED LEVEL 2 SERVICE PROVIDER



FLOOR SANDING

Coolangatta Floor Sanding

SPECIALISING IN OLD & NEW FLOORS
FREE MEASURE AND QUOTE
PHONE GLEN **4448 7932**
www.coolfloors.com.au

TRADES & SERVICES *Directory*

CKB CIVIL

All Earthworks
Landscaping
Driveways
Rural Roads



Charlie 0418 429 740
charlie@ckbcivil.com.au

Lic 244729c

SPACE AVAILABLE

CONTACT THE EDITOR
0428 037 572
towncrier@berryalliance.org.au

DOOR & WINDOW ROLLER & WHEEL REPLACEMENT

Repairs to Doors, Windows, Wardrobes,
Shower Screens and Flyscreens.
We also supply and fit Flyscreens,
Security Doors and Window Grilles.

0411 555 182 or 4446 4753



theRollerDoctor™

EXPERIENCED BOOKKEEPER

ARE YOUR BOOKS IN A MESS?
DON'T STRESS!
SPECIALISING IN MYOB
OPERATING SYSTEMS, INCLUDING BAS,
PAYROLL AND SUPERANNUATION SUPPORT.
CALL YVETTE ON 0403 155 504
I CAN HELP!
BAS & Payroll qualified FNSBKG404A405A 2011

Glynn's Carpentry

— YOUR HOME IS IN GOOD HANDS —
Maintenance, Repair & Renovation Specialist
"I can help with those odd little jobs that
never seem to get fixed or a bigger project
like a new kitchen or bathroom"
Lic # 218008C
For a friendly free quote - Glynn 0423 384 072

BELLETTTE ELECTRICAL & AIR CONDITIONING

All Electrical work
Reverse Cycle Split & Ducted
Air Conditioning
Sales Service Installation
Alex Bellette 0421830261
Lic No 209618C



design | build | restore
craftsmen in all aspects of traditional
& contemporary stone work

Visit our website for a range
of Natural Stone Solutions
www.stonehedgemasonry.com.au
50 LIDBETTER RD BERRY NSW 2535
BRETT HOFMAN: 0402 406 192



Southern Tree Service

- Qualified Arborist
- Qualified Horticulturist
- Tree care and maintenance
- Expert trimming and tree removal in confined areas
- Chipper • Mulch
- Advice on replacements
- Stump Grinding
- Fully Insured

Paul Gillen

Ph/Fax 4464 2822 • Mobile 0407 405 968

remedial & relaxing massage,
oncology massage,
naturopathic advice,
auro-soma colour,
living energy treatment;
for body and soul!



lauren cunio **4464 1060**
www.berrymountain.com.au

LOOK MOBILE MECHANIC LOOK

AND MACHINERY TRANSPORT

- LAWN MOWERS
- TRACTORS & MACHINERY
- LIGHT TRUCKS
- 4WD & UTES

0414 800 359

GREG LYNCH MOBILE FARM SERVICE

Ian Stralow
Blackwood Kitchens & Joinery
Cnr Angus Ave & Flinders Lane, South Nowra, NSW, 2541



p: 02 4423 1113 f: 02 4423 0688

e: blackwood@southernphone.com.au
www.blackwoodkitchens.com.au



HATHAWAY HEDGES

LANDSCAPE MAINTENANCE

- ALL SIZE LAWNS
- ALL SIZE GARDENS
- ALL SIZE HEDGES
- PLANT SALES
- ADVICE
- QUALIFIED HORTICULTURIST
- OVER 20 YEARS EXPERIENCE

Based in Broughton Village we service Berry and Surrounding Areas

Call Lawrie Hathaway
0411 888 333 A/H: 42 342 900

RBS rural bitumen services pty ltd

Specializing in Private Road Construction
& Bitumen Seal.

- Driveways
- Carparks
- Decorative driveways
- Fully Insured

Contact Office (02) 44 641 555

John 0408 160 428

HERE IS HOW TO GET THE BEST KITCHEN,
VANITY, FURNITURE, TIMBER WINDOWS,
DOORS, FLYSCREENS AND JOINERY

Rybrook Joinery

CALL SCOTT OR MICHAEL

4422 4600



Computer Troubleshooters™

TECHNOLOGY SOLVED

- Residential or Business we come to you.
- Hardware and software repairs and sales.
- Networking solutions.
- Over 20 years' experience.

4480 6028

www.ctsnowra.com.au

LOCAL SERVICE – GLOBAL STRENGTH



THE BERRY HOTEL

120 QUEEN STREET

BERRY 4464 1011 - Fax 4464 2142

RESPONSIBLE SERVICE OF ALCOHOL AND GAMBLING

TAB

SKY
CHANNEL

MELBOURNE CUP CARNIVAL

MELBOURNE CUP Luncheon: 5th November

Tables of 8: THREE COURSE Meal

DRESS: Gatsby Style

Live Entertainment: PAUL GREENE

Courtesy Bus: PICK-UP and DROP-OFF Nowra

From 12 NOON: \$50 each

BOOKINGS
ESSENTIAL

CALCUTTA TICKETS SELLING NOW!

Summer DINING

LUNCH: from 11.30am Daily

DINNER: from 6pm Nightly

BREAKFAST: from 8am Sunday

WEEKLY Specials

TUESDAY: Tex Mex

WEDNESDAY: \$20 Pint & Parmy

THURSDAY: Ribs & Rumps KIDS EAT FREE!

LIVE
MUSIC

FRIDAYS SATURDAYS OCTOBER

WEEKENDS

NO COVER CHARGE

2nd Woody

9th J Walkers

16th Rod Mitchell

23rd Brocke Lette

30th He Said She Said

Karaoke FRIDAYS



Berry-Shoalhaven Heads Cricket Club

Sports Dinner

with

Mike Whitney

23rd
NOVEMBER

former
Australian
Test Great
& TV Presenter

\$50 per person for 3 courses
Plus Raffles and Auctions on the Night

RESTAURANT - FUNCTIONS
- WINE TOURS -
ACCOMMODATION



it can only
happen here

Website: www.berryhotel.com.au - Email: info@berryhotel.com.au

Off-street parking for patrons at the rear of the hotel.