

DECEMBER 13/JANUARY 14

\$3.00

# Town Crier

PO BOX 202 BERRY NSW 2535

[www.berryalliance.org.au](http://www.berryalliance.org.au)

## Berry Alliance Community Consultative Body AGM and Meeting 7-11-2013

### Election of Office Bearers for 2013-2014

Three positions elected: **Chairperson:** Bill Piggott  
**Secretary:** Nancy Davies **Treasurer:** Geoff Armstrong

### CCB General Business

Shoalhaven City Council's Assets Manager, Martin Uptis, Martin detailed the move by Council to consult with communities and establish "levels of service" that members of the communities would like to see applied to their assets, such as roads, parks and public buildings.

### Matters of concern brought up by members of the Community:

- Roads, such as Woodhill Mountain road and Coolangatta road.
- Coolangatta Road is not only a through road but is designated cycle route on the Council website and a designated tourist drive. The road is too rough and too narrow.
- Main Street – Queen Street Berry: concern that this not be abandoned on the introduction of the "bypass": – the road is breaking up; RMS appears to be only concerned with the travelling lane; – community member would like SCC to make representation to RMS for the whole road, not just the travelling lane.
- The bridge over town Creek, which consists of three pipes, and an incident in which a heavy truck lead to partial collapse of the road, and being able to notify Council to carry out repairs; concern about ongoing maintenance.
- What is the minimum level of service or standard for roads in the LGA; opinion expressed that the roads in this area are some of the worst compared with surrounding areas, and in the Berry area appear to be in poorer condition and at times narrower than in other parts of the Shoalhaven.
- The repair of potholes and what standard is applied to this.
- Litter on the approaches to the recycling depot and Council policy regarding this.
- A statement that during the RMS review process in discussion concerning whose responsibility will be Queen Street, the reviewer informed of agreement between RMS and Council.
- Kangaroo Valley Road, especially the footpath alongside Kangaroo Valley Road of considerable concern.
- Policy on Agars lane; why does Council keep 2 km as a rutted dirt road?

- Construction of the highway realignment will impact on access as well as the quantity of traffic on existing roads; community members urged the Council to negotiate with RMS to make sure that this was compensated for
- Concern about the road reserves the land between the road and landowners boundaries
- Discussion of roads, service levels and assets raise the question of a master plan for Berry
- One question is what standard can the community afford, and what level of service will community members will tolerate. Council is trying to establish what that standard is. This is a new conversation Council is having with users. Presently the Council does not have a citywide standard. Standard for road would include width – 7.5 m. Council wants community to say what for them is an acceptable standard. this information will be included in the definition of standards.
- A community member recognised the large gap that exists between maintenance costs and capital costs.
- Also concerning the issue of cost, the question was raised whether work practices currently employed add to the costs (example given her Broughton Vale where council teams pre-ceded contractors to prepare the sites, which were then re-prepared before the work was done by contractor from out of the LGA
- Community has done a great job with the town Creek and surrounding parks with good collaboration with Council and active Parkcare groups. This needs to be maintained
- Re public buildings: some are in better conditions than others.
- School of Arts and Courthouse and buildings at the Showground are public buildings with heritage value
- Question was raised concerning the number of public spaces available for the community to use
- The heritage aspect of buildings is an important consideration

**Continued Page 27**

**The Berry Alliance** will be a part of this year's fun at Berry Merry Christmas on parade night by providing free face painting and refreshments. **See Page 4** and the **centre page lift out** for all the information you'll need to get the most out of this year's **Berry Merry Christmas!**

## NYE Fireworks

at the Berry Showground  
from 5pm

See Page 12 for more info.



## Town Crier Inside this Edition

- Tracks to the Future and le Tour de Berry Update..... Page 3
- Berry Museum showcases Historic Landing at Berry Beach ..... Page 4
- Carols in the Park .....Page 11
- Berry Merry Christmas 2013 ..... Centre page lift-out



## The Town Crier INFORMATION

The Town Crier is produced by the  
Berry Alliance, Inc.

The purpose of this publication is to communicate to the people of Berry about community activities and to generate a small income for the Berry Alliance to cover administrative costs.

### MEMBERSHIP

Membership of the Berry Alliance costs \$10 pa. It aims to share information amongst community groups and individuals, and to ensure that Berry continues to be a community we are proud of.

Membership is open to Berry community groups and individuals.

To join the Berry Alliance, write to  
PO Box 202, Berry NSW 2535

### CONTACT DETAILS:

**ALL TOWN CRIER ENQUIRIES:**  
0428 037 572  
towncrier@berryalliance.org.au

**ALL BERRY ALLIANCE ENQUIRIES:**  
Secretary: 0449 569 059  
Email: info@berryalliance.org.au  
Post Office Box 202, Berry NSW 2535

### BERRY ALLIANCE EDITORIAL BOARD

Rick Gainford Jennifer Clapham  
Kate Bramley Nancy Davies

Contributors are those from the Berry community who have news or views relating to residents of the area.

The opinions expressed in the Town Crier are not necessarily those of the Berry Alliance or the Editor.

The Town Crier is published every month, with a circulation of 2300.

### SUBSCRIPTION

*I would like to subscribe to the Berry Alliance Town Crier for twelve months.*

I ENCLOSE MY CHEQUE FOR \$39.00 INCL. GST

PLEASE POST MY COPY TO:

NAME: .....

ADDRESS: .....

PHONE: .....

RETURN TO:  
PO DROP BOX OR PO BOX 202  
BERRY NSW 2535

PRINTED BY **Berry Printers**  
CONCORDE WAY BOMADERRY PH: 4421 0500  
PRINTED ON RECYCLED PAPER

## RMS and Truck Movements along Prince Alfred Street, Wharf Road and Coolangatta Road.

This issue has been raised a number of times at Alliance meetings and Community Forums. The Alliance has written the following letter to Member for Kiama, Gareth Ward supporting those concerns and requesting he does whatever he can to assist them.

Dear Gareth,

At our November meeting the Berry Alliance passed a resolution to write to you as our local member with our on-going concerns regarding issues raised with you and the RMS about the RMS's utilising a parcel of land that they own to dispose of excess soil from the Gerringong works and the associated truck movements.

This issue and surrounding truck movements - noise, damage to infrastructure, dangers and a number of other matters was the subject of a Community Forum previously and we have been kept informed of issues raised and responses as well as any resulting actions.

It appears that this issue is still to be fully resolved as there are ongoing concerns about truck movements, their frequency and associated matters to residents along and around Prince Alfred Street, Wharf Road and Coolangatta Road area.

We understand that Minister Duncan Gay has been involved in these complaints and has responded to the residents. Sadly, community members state that the actions and truck movements are not consistent with the Ministers advice in his response and they are still concerned. It appears that he may not have been well informed by RMS Management.

On a more positive note, the community members also state that Adrian Rouse from RMS has assisted by implementing some alleviating actions and issuing letter box drops including:

"in response to community concerns Fulton Hogan has implemented a 70KM/H operating speed for its trucks travelling along Coolangatta Rd, Berry which normally has a speed of 90KM/H."

And "Fulton Hogan has also implemented a plant numbering system to enable drivers to be easily identifiable if they don't comply with the truck operating speed limit."

We support the community members and share their on-going concerns and ask that you do whatever you can to ensure a better outcome for the residents who have been affected.

Regards,

**Berry Alliance and Community Consultative Body**



## Christmas Season Cocktail Parties on the verandah overlooking the lights of Nowra

only at...

**The Lookout**  
Cambewarra Mountain

**Book your festive functions now !**

open 7 days  
Sat & Sun - **breakfast with the birds** from 8:00am  
off Tourist Rd 4465 1321

# THE ANNUAL *Tour de Berry*

A COMMUNITY FESTIVAL HELD EACH JULY

[www.tourdeberry.com](http://www.tourdeberry.com)

[www.facebook.com/TourdeBerry](http://www.facebook.com/TourdeBerry)



## Tracks to the Future and le Tour de Berry want your opinion and input.

**Community Meeting  
Berry Courthouse  
6pm Tuesday 10th December.**

Tracks to the Future / le Tour de Berry has just reviewed their future Projects and priorities.

Stage 3 of Clarence Street Shareway is due to be completed in the first half of 2014 and we are working on getting this finalised before Easter (certainly as soon as possible.) Council have committed to widening the road in that area, installing a "V" drain and sealing the new width of road. This is what everyone has been working toward and will allow us to finalise this section of shareway. The Tracks committee are attempting to bring this project forward to an earlier date than when Council are able to complete it, as well as attempting to save Council some money for this project by adopting the widening and drainage into our Shareway project. We are confident that there are economies of scale and further savings by combining these works.

Our next project is a Shareway on Victoria Street between Albany Street and Alexandra Street. (On the Showground side). This should be achievable this financial year.

If any community member has any ideas or concerns on this section of Shareway please contact the Tracks Committee, we would like to hear from you.

## Future Projects

**Our future projects include:**

1. Shareway (2 metres wide) from the carpark on North Street around the playing fields and join the carpark at Woodhill Mountain Road. This would create a complete circuit in a beautiful spot.
2. Continue the footpath on Prince Alfred Street starting at the Highway, along next to Apex Park to Albert Street. The existing path stops at the Baby Health Centre Building (Berry Community Activities Centre shop). The plan is to extend it to provide better access to Muir House where the BCAC has an art gallery. Stage 2 of this project would extend the pathway to North Street.

We are currently in discussions with the BCAC and hope to get the first stage done before Christmas with the financial assistance of the Berry Community Activities Centre.

We are also looking at some form of rider training area for kids and their bikes as well as continuing to support Rotary in their "Rotary Circuit" project.

Come to discuss our future projects, le Tour de Berry and any other fundraising options that we have.

**[tourdeberry@berryalliance.org.au](mailto:tourdeberry@berryalliance.org.au)  
0449 569059**

## Editor's Note...

**The closing date for our  
FEBRUARY issue will be  
Wednesday 8th JANUARY 2014**

Please submit prior to this date if it is  
your first submission.

Material can be submitted via  
e-mail to: [towncrier@berryalliance.org.au](mailto:towncrier@berryalliance.org.au) or drop box in  
the Berry Post Office PO Box 202 Berry 2535

**Phone 0428 037 572**

Nancy Davies - BERRY TOWN CRIER



## Small Office/ Room to Let **BERRY COURTHOUSE HAS A ROOM TO RENT**

Beautiful setting, ample parking and an historic building and you will be assisting the Berry Courthouse and Museum Conservation Committee protect and preserve a wonderful historic building.

Enquiries to  
[functions@berrycourthouse.org.au](mailto:functions@berrycourthouse.org.au)  
or telephone 0458 369 266.



**shop 5, 70 Albert St Berry NSW**

*located above Berry Necessary off the IGA car park*

**Phone: 1300 762 834**

**[info@beautyattheloft.com.au](mailto:info@beautyattheloft.com.au)**

**[www.beautyattheloft.com.au](http://www.beautyattheloft.com.au)**

**BEAUTY AT THE LOFT** is the brainchild of Amanda Sosnovsky who is the founder and owner of Spa Semiyahn in Shellharbour Village NSW. After a long awaited fit out of 2 yrs we are now open for business 6 days a week from 10am, late night Thursday and Friday and 10 til 3pm Saturday and Sunday.

**BEAUTY AT THE LOFT** was opened with the intention to make some of our most popular treatments available further down the Sth coast but with keeping our treatment rooms private only catering for 2 clients at a time.

Our selection of treatments come from our Spa Semiyahn menu with also the same therapists delivering these services, we are specialising in Dermaquest Facials, Microhydrabrasion, different types of massage that we have developed over the last 9 years which include a Loft signature which incorporates, hot stone and warm bamboo, chai herbal which are heated herbal poultices that are rolled and compressed into the body, Zen mediation which is an entire body treatment of massage, hot stone placement and a customised facial.

Our staff are qualified in all waxing especially eyebrow re shaping and brazilians, luxury pedicures in our relaxing comfortable lounge chairs choose from Tahitian vanilla & Pear, Papaya & Coconut, Lemongrass & Mint and our all-time clients favourite, Warm honey.

Choose to come with a friend/spouse/or mother daughter to enjoy one of our couples packages or buy a gift voucher for someone special and choose from a Beauty at the loft package.

**[www.beautyattheloft.com.au](http://www.beautyattheloft.com.au)**



*come and discover  
real produce from real producers*

*Every Month  
2nd Saturday & 4th Sunday  
Now from 8:00am 'til 2:00pm*

*New & seasonal produce at each market*

Andrew Place Park  
102 Queen St, Berry  
(Behind the Newsagent)

Find us on  
**Facebook**

Local producers contact Tricia on  
0425 842 909 for stall enquiries

# Free Face Painting at Berry Merry Christmas Parade



The Berry Alliance are assisting the Chamber of Commerce and Tourism and their other partners in a number of ways. You will see a four page lift out in this edition of the Town Crier so that the Berry community can be well informed of all the events on the Berry Merry Christmas Parade.

We are also providing free Face Painting for the kids (those who are kids at heart as well perhaps) on the night. We are grateful to the Berry Museum (Berry and District Historical Society) for allowing us to use their verandah and garden. The Museum has been open on the Parade night for many years and it is a great opportunity to visit and get to see the wonderful collections and displays that reflect the history of Berry.

On the parade night the Face Painting will be in the garden and on the verandah of the Museum (left side). The Alliance will also provide some healthy (mostly) refreshments for the kids, a glass of wine and other refreshments for the adults and a couple of information tables along with Alliance members to inform you of what we do and get your feedback, ideas and suggestions. (Town Crier, Tour de Berry, Tracks to the Future etc. You may choose to join the Alliance as well.

Please come and visit us on the night, we look forward to having a fabulous community focussed night.

Congratulations to the Berry Chamber of Commerce on the strong focus on community for this years Parade and associated events on the night. We are confident that it will be a huge success. It is already a highlight of the year – and kids (and others) just love it!

Merry Christmas to our wonderful community.

Ps – we are also providing the "Town Crier" for the Parade – a great joy

**Rick Gainford, President and all the Management Committee members of the Berry Alliance.**



## BERRY AND DISTRICT HISTORICAL SOCIETY REPEATS BY POPULAR DEMAND:

OUR DISPLAY FOR THE 80TH ANNIVERSARY OF THE CHARLES KINGSFORD SMITH LANDING AT BERRY BEACH

If you missed our display earlier this year, don't miss it again! Visit the Berry Museum to learn about the remarkable life of Charles Kingsford Smith and in particular about the historic landing of Smithy and his crew on Berry Beach in 1933.

### You can find us at:

135 Queen Street Berry  
Ph.: 44643097  
[www.berryhistory.org.au](http://www.berryhistory.org.au)  
[Berrymuseum@bigpond.com](mailto:Berrymuseum@bigpond.com)



### OPENING HOURS

Saturday 11am to 2pm

Sunday 11am to 3pm

The Museum is also open Mon to Fri in School Holidays from 11am to 2pm.  
Make a special visit to the Museum for Berry Merry Xmas.

**On December 4 the Museum with the Berry Alliance will host a number of community information tables for the Berry Merry Xmas celebrations.**

Come and join us - there will be fun for the kids and something for everyone to eat and drink.

HAVE YOU CONSIDERED BECOMING A MEMBER OF THE BERRY AND DISTRICT HISTORICAL SOCIETY TO HELP RUN THE MUSEUM, ATTEND TALKS AND LECTURES ON LOCAL AND FAMILY HISTORY AND ASSIST WITH DISPLAYS AND RESEARCH? AS A MEMBER YOU WOULD RECEIVE THE CHRONOGRAPH, THE HISTORICAL SOCIETY'S NEWS AND INFORMATION BULLETIN.



**4 superb rural lifestyle properties recently sold by Graeme Smith at Harcourts Kangaroo Valley who specialises in selling rural properties in both Berry and Kangaroo Valley.**

	<p><b>SOLD</b></p> <p>373 Kangaroo Valley Rd \$2,400,000 <b>Totally Panoramic 160 Acres</b> A grand old historic farmhouse and hand built stone walls with approximately 100 cleared acres this property has to be seen to be appreciated. Views to Pigeonhouse and Jervis Bay right up to Gerringong and Broughton Head.</p>		<p><b>SOLD</b></p> <p>60 Borrowdale Close \$925,000 <b>Fabulous 5 acres with views</b> Location, Location, Location. 4 bedroom, 2 bathroom home in an outstanding position featuring sweeping mountain views along with ocean glimpses. Situated in a quiet cul-de-sac set high on the northern slopes of Moeyan Hill.</p>
	<p><b>SOLD</b></p> <p>390 Woodhill Mountain Rd \$840,000 <b>A world away....</b> This older cedar 3 bedroom 2 bathroom house has a quirky design. It sits on 14.8 acres and this property is a perfect property to relax and get away from it all. 10 meter swimming pool, two large sheds, fenced paddocks and bush.</p>		<p><b>SOLD</b></p> <p>20 Housten Place \$1,390,000 <b>Perhaps the best 25 Acres in Berry</b> 2 residences for the price of one, with two separate driveways. This north facing property offers privacy and boasts breath taking views of the escarpments. Only a few minutes from Berry and the beach this property is ideally located.</p>

Harcourts Kangaroo Valley has increased its selling area to now cover Berry. Please give Graeme a call if you would like to discuss selling your property.



Office: 44651996  
Graeme Smith: 0418 907 110

Email: [kangaroovalley@harcourts.com.au](mailto:kangaroovalley@harcourts.com.au)  
2/160 Moss Vale Rd Kangaroo Valley NSW 2577

**View our properties at: [www.kangaroovalley.harcourts.com.au](http://www.kangaroovalley.harcourts.com.au)**

# Town Crier Close off date for 2014

This will be our last issue of the Town Crier for 2013. We will be back in February 2014. The Editorial Board and all at the Berry Alliance would like to wish the community a Merry Christmas and thank you for all the support you have provided us with this year.

Town Crier Close off date for Advertisising and Group articles 5pm Deadline	Delivery week of Town Crier Week beginning...
Feb - 8/1/14	20/1/14
Mar - 12/2/14	24/2/14
Apr - 12/3/14	24/3/14
May - 16/4/14	28/4/14
Jun - 14/5/14	26/5/14
Jul - 11/6/14	23/6/14
Aug - 16/7/14	28/7/14
Sep - 13/8/14	25/8/14
Oct - 10/9/14	22/9/14 or 29/9/14
Nov - 15/10/14	27/10/14
Dec - 12/11/14	24/11/14

**IF YOU RE HAVING AN ADVERTISEMENT DESIGNED BY AN OUTSIDE SOURCE PLEASE ALLOW PLENTY OF TIME FOR THEM TO CREATE YOU'RE AD SO THAT YOU HAVE AMPLE TIME TO PROOF READ YOU'RE ARTWORK BEFORE SUBMITTING TO THE TOWN CRIER.**

(ADVERTISEMENT)

## Ann SUDMALIS

FEDERAL MEMBER FOR GILMORE



Thank you to the residents of Berry for your support.

I would like to take this opportunity to wish you a Merry Christmas and a Happy and Prosperous New Year.

I look forward to seeing you on one of my many village visits in 2014.

The office will be closed from Monday 23 December 2013 and will reopen on Monday 6 January 2014.

Phone: 4423 1782

Email [ann.sudmalis.mp@aph.gov.au](mailto:ann.sudmalis.mp@aph.gov.au)

*Together We Achieve*

Written & authorised by Ann Sudmalis MP. This material has been produced by Ann Sudmalis MP using her printing and communications entitlement.

## Thank you Lauras café on queen

*To all my lovely customers  
Thank you for all your support  
Especially this past year during my illness.*

*And to the wider Berry Community  
& Businesses*

*Who offered help & support*

*Please welcome Brett & Emma  
the new owners*

*They are new to the  
Berry Community & are  
Looking forward to meeting you*

*Thank You  
Laura*



## ARE YOU PLANING TO TRAVEL?

**LET ME BRING THE WORLD  
TO YOU.**

I've been in the travel industry for more than 22 years and traveled to more than 30 countries. With TravelManagers I now have the opportunity to share my experience, knowledge and love of travel on a far more personal level. My goal is to ensure that every one of my clients enjoys a tailor made holiday that not only meets but far exceeds their expectations.

So what's a personal travel manager? Essentially I'm a mobile travel consultant with the flexibility to meet with you at a time and place that's convenient to you, 7 days a week. This means I can help plan, facilitate and book your next holiday at your home, office, via phone or email and even over a latte at a local coffee shop. It's similar to a mobile mortgage lender except that I'm looking after your holiday.

As your personal Travel Manager I have access to the best holiday and travel deals. I can book every element of your holiday from flights and accommodation to transfers, cruises, tours and travel insurance.

I'm really looking forward to becoming your personal travel manager and helping you to plan the holiday of a lifetime. Please contact me today.

**Shayne Tiplady** – Personal Travel Manager

**M 0401 548 704**

[shaynet@travelmanagers.com.au](mailto:shaynet@travelmanagers.com.au)

<http://my.travelmanager.com.au/ShayneTiplady>

**[www.travelmanagers.com.au](http://www.travelmanagers.com.au)**



**TRAVELMANAGERS**  
personally yours

PART OF THE HOUSE OF TRAVEL GROUP

Licence No: NSW: 2TA5758 VIC: 32695 TAS: TAS158  
SA: 198473 WA: 9TA1394 QLD: 3168806 NT: LTA154  
ABN: 35 113 085 626 Member: IATA, AFTA

# Raine&Horne



**List or Sell** your home with one of our 3 offices in either **Nowra, Berry or Shoalhaven Heads** from November 25th 2013 to March 31st 2014 to go into the draw to **WIN** one of these great Raine & Horne Rewards

**1st:** Your choice of a Holden Barina Spark or a \$13,000 travel voucher with Harvey World Travel Nowra

**2nd:** \$5000 travel voucher with Harvey world travel

**3rd:** \$2500 voucher to spend with the Good Guys South Nowra

\*terms & conditions apply (Contact office for details)

Raine&Horne Nowra  
Raine&Horne Berry  
Raine&Horne Shoalhaven Heads

78 Kinghorne Street, Nowra T: 02 4423 4600 F: 02 4421 2599 Web: [rh.com.au/nowra](http://rh.com.au/nowra)  
2/65 Queen Street, Berry T: 02 4464 1300 F: 02 4464 2111 Web: [rh.com.au/berry](http://rh.com.au/berry)  
1a Jerry Bailey Road, Shoalhaven Heads T: 02 4448 7171 F: 02 4448 8211 Web: [rh.com.au/shoalhavenheads](http://rh.com.au/shoalhavenheads)



# IT'S A SIGN



**Berry  
Community  
Church**

A church was preparing for Christmas services. The pastor decided he wanted a banner made for the entryway and had his secretary call the sign company. The secretary told the man on the phone the message he wanted, and the dimensions needed for the entryway.

The sign came back a few days later..."Unto Mary Jesus was born, six feet long and two feet wide."

It's a sign! However it may not have been the 'sign' that the pastor was hoping for but it is good for a laugh!

As Christmas fast approaches it is a good time to look afresh at the birth of Jesus Christ. For some we may have looked at it once and thought that it wasn't for us. For some we may have looked at it and have since walked away. In the bible we are encouraged to take a fresh look at Jesus regularly. It says like this, "Take a good hard look at Jesus. He's the centerpiece of everything we believe, faithful in everything God gave him to do." [Heb 3:1 TM]

This Christmas it is worth remembering that Jesus is a sign we should stop and consider. There are many things that Jesus signals for us, and I will pick just a couple.

It's a sign that God is interested in us. One of the most well known passages in the bible puts it like this; "For God so loved the world" [Jn 3:16]. Or to put it differently, Jesus is a sign that God is interested in us because you

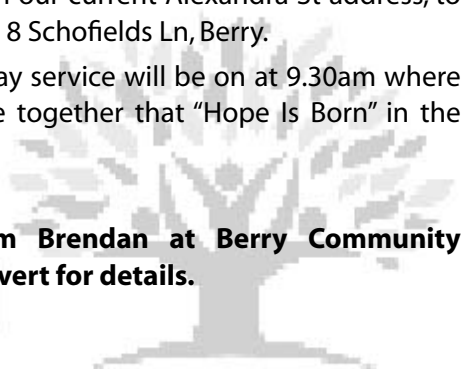
wouldn't launch the action that he did if you weren't. It's a sign that is good news for all people. The bible puts it like this; "Do not be afraid. I bring you good news of great joy that will be for all the people [Lk 2:10]. Or to put it differently, Jesus is a sign that that God's actions can be good news for everybody.

It's a sign that points to life. The bible puts it like this; "I [Jesus speaking] came so they can have real and eternal life, more and better life than they ever dreamed of...I have come that they may have life, and have it to the full [Jn 10:10 TM/NIV].

So this Christmas I encourage you again to consider Jesus and what he signals for us. I encourage you in the lead up to Christmas or on Christmas Day to visit one of the local Christian churches. If you want to join us please check out our website [www.berrycommunitychurch.org] for details as somewhere in December we hope to have moved from our current Alexandra St address, to our new home at 8 Schofields Ln, Berry.

Our Christmas Day service will be on at 9.30am where we will celebrate together that "Hope Is Born" in the birth of Jesus.

**God bless from Brendan at Berry Community Church...see advert for details.**



**Berry  
Community  
Church**

**We meet at 34 Alexandra st Berry**

**Sunday service times 930am & 5pm (kidz church)**

**Activities include Mainly Music, Berry Youth and Homegroups**

**For further information** [www.berrycommunitychurch.org](http://www.berrycommunitychurch.org)  
[brendan@berrycommunitychurch.org](mailto:brendan@berrycommunitychurch.org) (02) 4464 2315

A member of the Baptist Churches of NSW & ACT

**Bringing life to the southcoast and the nations**

**OPEN NOW...**



**BERRY  
TRADERS**

Antiques, Collectables, Homewares

• We Buy • We Sell • We Consign

**49 Queen St, Berry**

(next to 'Good Wool Store')

Friday, Saturday, Sunday, Monday

Ph 4464 3846

# BERRY BOWLING CLUB

## CHINESE RESTAURANT

## GREAT VALUE FOOD

### Lunch

Wednesday to Sunday - 12.00 noon to 2.00pm

### Dinner

Wednesday to Sunday - 5.30pm to 8.30pm

**TELEPHONE: 4464 2388 - For Bookings & Take-Away**

## CHRISTMAS HALF HAM RAFFLE

## EVERY FRIDAY

**STARTING FRIDAY 22ND NOVEMBER - UP UNTIL FRIDAY 20TH DECEMBER**  
**DRAW STARTS FROM 7:30PM**

### RAFFLES

#### THURSDAY

Berry Fisho's Club Raffle -

Tickets on sale from 5.30pm - Drawn 7.15pm

#### FRIDAY

Club Raffle -

Tickets on sale from 6.30pm - Drawn 7.30pm

#### SATURDAY

Berry Cricket Club Raffle -

Tickets on sale from 6.30pm - Drawn 7.30pm

#### SUNDAY

Club Raffle - Tickets on sale from 6.30pm - Drawn 7.30pm

### BOWLS

Berry Bowling Club

(02) 4464 2995

#### Ladies:

Tuesday & Thursday 9.00am

#### Mixed:

Thursday in uniform 9.00am

#### Men:

Wednesday & Saturday 1.00pm

#### Mixed:

Saturday 1.00pm

#### David Armstrong

President Men's Bowling Club

(02) 4464 1543

#### Carolyn Borland

President Women's

Bowling Club

0412 533 789

**Berry Bowling Club**  
140 Princes Highway  
Berry NSW **Phone: 4464 2995**





# RedBerry Quilters

*Wish Everyone a Safe and Happy Christmas*

RedBerry Quilters have had a fabulous first year. We have been inspired by the outstanding Guest Quilters who have joined us for our monthly meetings: Merelyn Pearce, Denise Griffiths, Julee Jones, Pamela Rouse, Sue King, Anita Larkin, Jennifer Corkish and Chris Jurd. We have met to stitch, learn new techniques and try some small projects with the help of our members, picture piecing, postage stamp designs, pumpkin bags and Christmas projects and we have also explored some art quilt techniques.

We took a day trip to the Sydney Quilt Show in June and were able to join with our sister quilting groups in Nowra and Kiama in a number of great activities. We ran Berry 'Quilts in May' quilt show and challenge, and were very pleased to donate \$7000 dollars to Noahs Ark Centre of Shoalhaven Inc. in Nowra. Most importantly, we have made new friends and shared in the quilting adventure. Our Thanks go to everyone who has helped to make our first quilting year such a success.

Next year is already shaping up to be even more exciting with more guest quilters, more techniques and projects and more adventures. If you'd like to join us, our first meeting for 2014 will be held on Friday 24 January at 9.30am at St Luke's Anglican Church Hall, Berry and everyone is welcome.

**For more information contact**

**Dorothy 0418282199 Maureen 0409243696 or Carolyn 0447868055**



# Berry Riding Club

Berry Riding Club has had a very busy October with a dressage and a showjumping competition. Our membership continues to grow and we are welcoming more riders from Sydney and the Highlands to share our days and Berry's amenities.

During the past 6 years the Club has averaged 200 active members per year and provides riders with the opportunities to undertake training, coaching and competition at their particular level of ability. There is no other multi-discipline equestrian club like Berry Riding Club that exists between Sydney and Moruya and consequently it has a widespread of membership.

We regularly conduct training days with highly qualified coaches, and through November we have a jump training day with Andrew Haddad of Milton and a working equitation day with Chris Fowles of Maclean. Working equitation is a new discipline to equestrian sport in NSW and is based on the training required of horses used to work on cattle ranches. As with other equestrian disciplines the aim is to produce a responsive and subtle horse ridden in collection at walk and canter. More simply put, it is a 'fun way to train seriously', no less classical than pure dressage but using various obstacles in pursuit of the goal.

Our less competitive club members who meet during the week for a social ride and morning tea have decided to put some new emphasis into their training. This will involve lots of action as might be required of a horse on a property, initially slow and later faster, all performed with the reins in the left hand leaving the right to do things like open gates. All riding activities require a willing horse and for this to happen the activities need to be varied and interesting.

## Pink Ribbon Weekend

On the 6th and 7th December our annual fund raising weekend for breast cancer is being held at the Berry Showground. On the Saturday there is our Pink Funkhana - lots of fun for everyone, with riders and horses decked out in pink. Then on the Sunday there are two dressage competitions, one for fun by the Berry Riding Club and one for the more serious competitors run by the South Coast Equestrian Club. Everyone is very excited at this joint venture which brings members of the South Coast dressage fraternity together to enjoy some competition and camaraderie. Spectators are welcome at any time over the weekend.

Refer to [www.berryridingclub.com](http://www.berryridingclub.com) for full details of Club activities.



See: [seniorshousingonline.com](http://seniorshousingonline.com) - Berry

## OPPORTUNITY FOR THE OVER 55 Villa 42, The Grange is special



**A NEVER TO BE REPEATED  
VILLA FOR AN  
OVER 55 IN  
BEAUTIFUL BERRY**

2 beds and study + lge 2 car garage and Ready-made small garden beds. Room for kid's play tent or small pet

### EXTRA FEATURES ARE

Timber floor throughout  
Timber Venetians throughout  
Lovely curtains  
Extra Shower  
Large Covered Patio

The Villa is meters from Cared-for Pool and Craft/Pool room

Use of Club facilities  
**PRIVATE POSITION - ONE ONLY**  
in Beautiful Berry  
Ring Joanne 9-3 weekdays 44643883  
or Message to 44643665  
See [seniorshousingonline.com](http://seniorshousingonline.com) No.7566



Cnr Angus & Flinders Road,  
South Nowra NSW 2541

Ian Stralow

**New Kitchens  
Kitchen Makeovers  
Laundry Cabinets  
Sewing Rooms  
Office Fitouts  
for home and work**

**& NOW BUILT IN WARDROBES**

**PHONE: 4423 1113**

E: [blackwood@southernphone.com.au](mailto:blackwood@southernphone.com.au)

[www.blackwoodkitchens.com.au](http://www.blackwoodkitchens.com.au)



## **Berry to Bomaderry upgrade project**

### Review of Environmental Factors – Public Display

The concept design and review of environmental factors for the proposed Princes Highway Berry to Bomaderry upgrade is on display for your comment until **Friday 29 November 2013**.

The review of environmental factors outlines the impact of the proposed upgrade and identifies mitigation measures to reduce these impacts.

#### **Have your say**

You are invited to make a written submission on the review of environmental factors by Friday 29 November 2013:

**Email:** [berrytobomaderryupgrade@rms.nsw.gov.au](mailto:berrytobomaderryupgrade@rms.nsw.gov.au)

**Mail:** Berry to Bomaderry upgrade, AECOM, PO Box Q410, QVB Post Office, Sydney NSW 2000

All submissions made during the display period will be addressed by Roads and Maritime with responses published in a submissions report.

#### **Display locations**

The review of environmental factors is on display on the project website. The project team will be available to answer questions and receive feedback at:

- Fridays at the project office (Broughton Court, Berry) from 10am to 5pm.
- Saturday 9 November 2013 at the project office (Broughton Court, Berry) from 10am to 2pm.
- Tuesday 12 November 2013 at Nowra Showground Pavilion (West Street, Nowra) from 10am to 5pm.
- Thursday 14 November 2013 at the project office (Broughton Court, Berry) from 4pm to 7pm.
- Saturday 23 November 2013 at the project office (Broughton Court, Berry) from 10am to 2pm.
- Thursday 28 November 2013 at Nowra Showground Pavilion (West Street, Nowra) from 4pm to 7pm.

The review of environmental factors will be displayed at the following locations:

Nowra Library  
10 Berry Street Nowra

Office of Shelley Hancock MP  
1/57 Plunkett Street Nowra

Shoalhaven City Council  
44 Bridge Road Nowra

Gerringong upgrade community display centre  
446 Princes Highway, Gerringong

Office of Gareth Ward MP  
102 Terralong Street Kiama

Roads and Maritime Services Wollongong office  
Level 4, 90 Crown Street Wollongong

#### **For more information**

**Email:** [berrytobomaderryupgrade@rms.nsw.gov.au](mailto:berrytobomaderryupgrade@rms.nsw.gov.au) **Web:** [rms.nsw.gov.au/bbu](http://rms.nsw.gov.au/bbu)

**Phone:** 1800 506 976 (free call project information line)

**Berry project office:** (Broughton Court) Shop 3/113 Queen Street, Berry



# Landcare



Great Eastern Ranges Initiative Illawarra to Shoalhaven (I2S) Project: The Shoalhaven Landcare Association has over the years applied for and managed numerous local, State and Federal Government grants. The most recent successful application under "Caring for Our Country 2011-2012" has resulted in, amongst other activities, the facilitation of four resource management plans. One of these is the Berry Wildlife Corridor (BWC) between the Barren Grounds and Seven Mile Beach National Parks mentioned in previous articles in this publication. The Berry Corridor I2S Project will support local efforts to engage landholders in the restoration and creation of vegetation and connectivity in the BWC.

Ten potential sites have been identified in the BWC which are possibly suitable for weed eradication, fauna monitoring, some fencing, native tube stock planting and promotional events. At the time of the writing a promotional field day has been arranged to visit some of the proposed sites on the 25th of November. This will have taken place by publication. One of the areas to be visited is a 40 ha mature Eucalyptus- Turpentine forest adjacent to the Highway 3 kilometres East of Berry.

This area was part of a dairy farm since the early days of European settlement in the 19th Century. It had a minimal covering of pasture and Eucalyptus saplings when it was severely burnt out in 1967. The area was grazed for some while after that event but eventually the owner fenced it and allowed the forest to regenerate.

A disturbance such as the '67 fire leaves a lasting effect on the landscape and the majority of forest trees look to be of a single age (about 40 years). The trees are closely spaced and of similar size. There are some remnants of a previous time when the main

disturbance processes (fire & grazing) were different and occasional larger wider tree forms indicate this. Mature long lived trees can help show what changes and disturbance patterns have been going on over decades. So too can landforms such as gullying and erosion etc. An area of Turpentine trees, the presence of Cabbage palms in gullies and the general under canopy species are good examples of what the I2S project is hoping to attain elsewhere in the corridor. Unfortunately there are also large areas of Lantana, Crofton and other weeds on the perimeter of the forest.

**Weed of the Month:** *Watsonia* or Bugle Lily (*Watsonia meriana*): An erect perennial to 2 metres high, setting annually from underground corms. Each corm produces numerous leaves topped by long spikes of vermilion-pink bugle-shaped flowers. The fruit are cormils to 7mm diameter produced in cymes of up to 16 along the flowering stem. Spread by machinery grading road verges and areas subject to water runoff. There is a large infestation at Meroo Meadow adjacent to the highway.

**Control:** Dig small infestations. Don't leave bulb or small offset bulbs behind. To prevent seed development cut tops after flowering. Slashing will spread seeds. Best time for spraying is when flower stalks are elongated as bulbs will be most weakened.

**Working Bees for December:** Bong Bong Road, 9-11am Sunday 8th December; Tindalls Lane, 3-5pm Sunday 8th December - At Tindalls Lane end of Boundary Road link; - Princess Street Park, 3-5 pm Sunday 15th December; - Mark Radium Park, 9-10 am Friday 13th December; - Bundewallah, Sunday 3-5 pm 29th December. Other work days will be advised by co-ordinators.

## For further information:

Bong Bong Road - Julia Woinarski (4464 2084)

Broughton Vale - Philip Thorniley (4464 2198)

Bundewallah - Will Armitage (4464 2241)

David Berry Hospital - Kim Dove (4464 3391)

Mark Radium Park - Rodney Cole (4464 1475)

Moeyan Hill - Bill Pigott (4464 3241 or  
wpigott@bigpond.net.au)

Princess St Park - Diana Coxhead (0433 213 219)

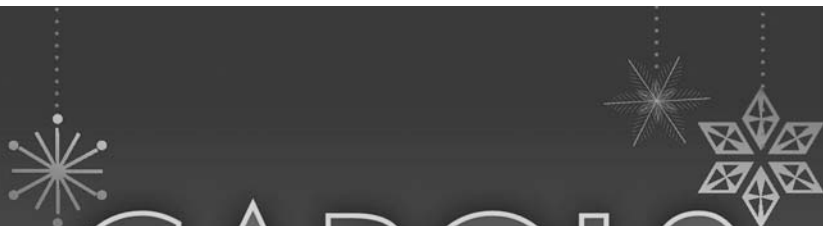
Strong's Road - Ian Parker (4448 6359 or  
ianlindap@shoalhaven.net.au)

Tindalls Lane - Harvey Blue (4464 1880).

Information can also be found at Berry Landcare on Facebook



Weed of the month, *Watsonia*



## CAROLS IN THE PARK

DEC 24, 7PM-8:15PM, BERRY APEX PARK

*Come, bring a chair or rug and  
celebrate Christmas with the people of Berry.  
The Kingship of Jesus is cause for joy.*

*for inclement weather, alternative venue is the Berry School of Arts*

## Join us at the following Christmas celebrations:

**ST LUKE'S ANGLICAN CHURCH, Princess St.**  
CHRISTMAS EVE 11PM HOLY COMMUNION  
CHRISTMAS DAY 8AM HOLY COMMUNION  
9:30AM FAMILY SERVICE

**BERRY UNITING CHURCH, Albert St.**  
CHRISTMAS DAY 9AM CHRISTMAS SERVICE

**SCOT'S PREBYTERIAN CHURCH, Victoria St.**  
CHRISTMAS DAY 9:30AM CHRISTMAS SERVICE

**ST. PATRICK'S CATHOLIC CHURCH, Albert St.**  
CHRISTMAS EVE 9PM CHRISTMAS VIGIL  
CHRISTMAS DAY 8AM CHRISTMAS MASS

**BERRY COMMUNITY CHURCH, Schofields Ln.**  
CHRISTMAS DAY 9:30AM CHRISTMAS SERVICE



### New Year's Eve Family Fun Night and Fireworks Not to be Missed

The Family Fun Night at the Berry Showground on New Year's Eve is planned to be bigger and better this year. The Rotary Club of Berry is once again staging a New Years Eve event not to be missed.

The fun commences at 5pm with numerous free games for the children to play in the middle of the showground. Traditional good old fashioned games will be available free of cost where the kids can let their hair down and have a ball of a time, while the grown ups set up the picnic blankets to get the best view of the stage.

Entertainment this year includes acts from Matt Scullion - an Aussie professional singer/songwriter now based in Nashville Tennessee. We also have a children's favourite - Pirate Pete - playing his own brand of music and telling stories. And an up and coming acoustic trio called Silkwood will amaze you with their talent.

On the outside of the main arena, market day variety stalls, food stalls and an exciting range of carnival-style rides provides options for the whole family to have a great time in the lead up to the main event at 9pm - the magnificent fireworks display which will light up the night skies.

Families are encouraged to bring a rug and make a real picnic night of it and enjoy the beautiful surrounds of the Berry Showground. Entry is \$5 adults (over 15 year old) with children free. This is an alcohol free event and proceeds of the night go towards the community activities of the Rotary Club of Berry.

For further information contact Ross Thompson on 0477 171 714.

Enjoy an Australia Day Breakfast at the Showground

Following the success of the inaugural event last year the Rotary Club of Berry is organising another Australia Day Breakfast on the morning of January 26th to be held near the wood chop area at the beautiful Berry Showground.

A variety of entertainment together with an official service recognising Australia Day will ensure an enjoyable morning. It is a BYO picnic breakfast however egg and bacon rolls, sausage sandwiches, tea, coffee and soft drinks will be available from the Rotary BBQ and Grill.

The Australia Day Breakfast will commence from 8am and continue until 11.30am. Everyone is welcome, with a gold coin donation being appreciated. To find out more contact Rotarian Tina Ballard on 4464 2118.



In September of this year, 800 delegates from around the world attended the 18th International Leprosy Congress in Brussels. This gave all those attending an opportunity to share experiences and approaches so that our projects can maximise positive changes for those affected by leprosy.

In a keynote address WHO Goodwill Ambassador for Leprosy, Mr Yoher Sasakawa, highlighted the formidable challenges that still lay ahead in the race to end leprosy.

'We must correct misconceptions and ignorance through awareness - building and advocacy,' he said. 'The fight against leprosy is not over.' Many challenges still remain. These include:

- A recent increase in the number of new cases detected.
- Decreasing leprosy expertise.
- Difficulty diagnosing the disease, and
- Continued stigma and discrimination that can blight the lives of people diagnosed with leprosy.

It is encouraging to learn of the input that the Leprosy Mission has in these conferences in assisting with the impact and also by learning of the methods used in other groups working with the Leprosy patients.

Our group is always greatly encouraged when we learn of the ways we can aid those who are affected by leprosy and our next fundraising stall will be on the 14th December in Broughton Court, the money raised from this stall will go towards a project assisting with education for children in India.

Our next auxiliary meeting will be held on the 20th February 2014.

May we take this opportunity to wish you and your families all the best for a happy Christmas and a safe and happy new year.

**Trish Nicholson sec/tres. Berry Leprosy Mission Auxiliary**  
44641693 or 0401151820



FOR A WORLD WITHOUT LEPROSY

## EASTCOAST ULTIMATE CUSTOM MADE BUILT IN WARDROBES

14a Cumberland Ave – SOUTH NOWRA  
(just up the road from the RTA)

**PHONE: 02 44210543**

**www.eastcoastultimate.com.au**



As owners of East Coast Ultimate for over 20 years, Phil and Keren Rice pride themselves on delivering an excellent product for a reasonable price.

Our products are locally manufactured and designed to suit each individual home.

We offer a free measure and quote no matter how large or small the job.

Come in and visit our modern showroom, look up our web site or invite us out for a quote.

**We look forward to hearing from you.**

## MAINLY MUSIC UPDATE



As we approach the end of another year, I find it amazing when we reflect back over the past year and note the development of our beautiful children and families. We have observed children gaining confidence in routines and general learning skills, they are so happy to be part of the group and take part in all forms of activities, from playing musical instruments to joining in with group games and activities, learning to share and care for others in the group and as the ages range from 0 to 5 year olds, this is quite an achievement.

To celebrate the end of the year we will have a special morning service on Sunday the 15th December for the families and friends, commencing at 9.30 am, this will give us the opportunity to let others in our wider community learn about the things we do at Mainly Music, so please keep the date free as we would love you to come along and share the morning. On this morning we will also be making a presentation to the children who will be going to Big School.

For more information regarding the programme or general information contact Trish Nicholson on 44641693 or 0401151820.

## BERRY EVENING VIEW CLUB

At our November meeting, our theme was "Back to School". We were asked to bring school photos or any memorabilia assorted with our school days. The photos were great and we had a competition to see how many we could identify. Some were easy as you only had to think of their children. Our Delegate, Heather, came dressed in her school uniform and spoke on her School Days. Heather you looked a picture but in my day the girls school Mother would have sent you home because of the holes in your black stockings. Sorry I didn't get a photo.

In her Delegate report, Heather mentioned that in 1913, \$55,000 had been raised for The Smith Family for the Toy and Book Appeal. A great effort. We were asked that at our November meeting that we bring an envelope a money in it for the appeal this year. We aim to collect \$200 and if it is not achieved, the Club will make it up.

Don't forget Ladies, if you are on the Christmas Gift Wrapping service at Stocklands, to check with Heather if you do not know your day or time. It is a very interesting day, until you get a present that is HUGEEEEEE.

On behalf of the Club members, we would like to thank Evelyn Strong for presenting a wreath at the Commemoration Service at the Berry School of Arts on Friday, 11th. November.

Well done, Evelyn.

We have had a very nice Christmas card from Donna Rogers, our Learning for Life co-ordinator thanking us for our assistance toward our Learning for Life sponsored child. Our child is now in High School and we have to raise over \$800 each year. A big ask for a small club.

Our Christmas Party this year will be on 18th. December at the Berry Bowling Club. Members are requested to bring a gift of Christmas food, e.g. chocolate, nuts etc. to the value of \$10. This is a Christmas gift for each other.

A reminder our January, meeting is to be held on Wednesday, 18th. January, 2014 at the Berry Hotel. You do not have to book as this is a social meeting only. Just turn up 6.30pm and order from the menu.

Our next Coffee Morning is to be on Thursday, 5th. December at the Book Shop. Please join with us and bring a friend. Last one before Christmas. No need to book, just stroll in, you will be most welcome.

In January, our coffee morning will be on 2nd. at Jetz Café. Same time. You may need a quiet break after Christmas and New Year.

Next year the Women's International Day luncheon will be held at Parliament House, Macquarie Place, on Thursday, 6th. March. Cost will be advised later. If going by train, you only have to go to Martin Place and walk up to Macquarie Place, turn left and cross over the street and walk down to the security gate. Check first if you will be going by train or bus. The bus usually goes earlier.

If you would like to join with us for our dinners, please ring Kath Bowley on 44641032 to book in. We meet at the Berry Bowling Club for dinner at 7pm and you must book before the Saturday prior. You will be very welcome.

**Pamela J. Coles**  
Publicity Officer

## as individual as you are

open your door to a higher level of service...



all price levels  
all property types  
all with a premium level of service

**gary dale 0418 211 917**  
residential and rural specialist  
gary.dale@belleproperty.com



**now open**

**belle property**  
the berry inn building,  
122 queen street **4464 1636**

belleproperty.com/berry

**belle**  
PROPERTY



# Berry Show Society Inc.

*Proudly showcasing excellence in the local community for 125 years*

[www.berryshow.org.au](http://www.berryshow.org.au)

**President: Peter Hands • Senior Vice President: Peter Harris • Secretary Jim Bieler**

December 2013

To the people of Berry,

My first Berry Show was in 1983. Being from Wollongong originally, I immediately loved the agricultural side of the show, it was so fundamentally different and refreshing from my field of mechanical engineering. The smell of the show stuck with me the most and reminded me of my childhood holidays that I spent milking at a friend's farm in Rose Valley.

Our family soon became show regulars, I started displaying in the trade section of the show and our company became sponsors of the Open Bull Ride in the Rodeo. I spent much time with the kids in their drizabones watching the ducks go down the slide in the farmyard nursery, admiring the finesse and accuracy of the woodchoppers next door and I always enjoyed a hit up with the extended family on the dodgems.

The show wasn't always fast paced though. As a trade exhibitor I have a vivid memory of sitting out on the white benches around the ring early on Saturday morning, enjoying a coffee as the sun came up over the Alexandra St gate. The air was crisp, the rays shone through the trees and I watched the Robinson's exercise their trotters.

Thirty years later and I am Berry Show President and our family have become show addicts! Asking my family what they love so much about the Berry Show before writing this invitation, the answers were varied. Marelle, my wife, has always been a keen horsewoman and enjoys the Arabian classes and the sporting. Her mother, Cleone, likes seeing all the young local women continuing the showgirl tradition throughout the show, sashing cattle, making cappuccinos and engaging with the public around the grounds. My daughters, Ashley and Anna, have always loved the social side as it gave them a great opportunity to catch up with local friends. They say "Everyone is around at show time Dad!"

The show is a Berry tradition and one that only happens because of the effort of so many local people volunteering their time, energy, money, machinery, animals and enthusiasm. The show is about bringing everyone together and continuing a great country tradition, one that gets you and your family out together and reminds us all why we love living and breathing where we do!

To keep the show alive for another year we NEED your support. So invite a friend to enjoy the show with you this year, invite 10 friends if you can! Make Berry Show memories for everyone because the more people we can get to enjoy the Berry Show, the more chance we have of continuing this great country show well into the future!

If you wish to personally help in January 2014 for a few hours please phone me on 0418 421 981 (22 hours). Any form of sponsorship will also be gratefully acknowledged.

So enjoy a restful Christmas, a joyous New Year and when it comes to Friday January 31<sup>st</sup> and Saturday February 1<sup>st</sup> 2014, pull out your checked shirt and put on your boots and get country for the 126<sup>th</sup> Berry Show!

Sincerely,

*Peter Hands*

Berry Show Society President

---

Berry Show Society Ladies Auxiliary is purchasing new crockery and now would like to donate all or some of the existing crockery to a local charity or individual. There is quite a large amount available. Please phone 0419 615 097 or send a text message if you would like to register your interest. Thank you.

# CWA December News 2013

## December already!



Recently an Antique Appraisal Day was held in the Berry CWA rooms – a wonderful afternoon was enjoyed, and Margot and John gave judicious values on 'all things old'. It is amazing what treasures we have, some hidden away, some on display, but all with a particular history of their own.

The busy year has begun to wind down. Our last craft stall for 2013 was held on the 23rd November. The Land Cookery valuations, both Branch and Group, have been held. Berry Primary School were participants this year, entering their lemon and poppy seed muffins or their cherry walnut cake. What stiff competition! We can well imagine that one day they will surpass all the best CWA cooks. Congratulations to all the entrants. The Annual Wollondilly Group Conference was held in October at Kangaroo Valley and new officers for 2014 were appointed. 2014! that seems so far away and yet in reality only a few weeks. Our year will wind up with a celebratory Christmas lunch at the Pavilion, Berry but, can you believe this? We exchange a gift at the very high value of 50 cents. Yes, 50 cents! This will certainly take initiative and ingenuity. Our Christmas break up is one to be enjoyed and a chance to wish our friends well for the Festive Season.

What are your wishes for Christmas? Perhaps something like:

I want a hippopotamus for Christmas  
I don't think Santa Claus will mind, do you?  
He won't have to use our dirty chimney flue  
Just bring him through the front door,  
that's the easy thing to do.....

-John Rox

What will the new year bring? Busy times. Berry CWA will once again have the Crafters on the go, and when the Berry Show comes around the CWA ladies will be there with their aprons and gloves on ready and willing to help make sandwiches for the many visitors and Show helpers. It is indeed a privilege to help serve our community.

May we take this opportunity to wish you and your family a peaceful and happy Christmas and a great New Year? You will always find a welcome at our CWA rooms, Victoria Street, Berry.

"Families and friends together feel a special kind of love and cheer,  
Sharing all the joys of Christmas time, The very best time of the year."

-John Rutter

**Jean Stanfield**  
**Publicity Officer**

For further information contact either Marie 44232164, Sandra 44642836, the CWA website at [www.cwaofnsw.org.au](http://www.cwaofnsw.org.au), or the Secretary PO Box 321 Berry 2535

**Berry Primary School**  
**Junior Land Cookery.**  
**A very, very high standard.**



## Berry Showgirl Ball

The Showgirl committee are excited to announce that the Annual Berry Showgirl Ball will be held on Saturday 18th January at 'Gabbys at Berry' Restaurant and Function centre.

Tickets are \$40 and will be available at the Berry Pharmacy from 27th December through to Monday 13th January.

Come along for a fun and entertaining evening and get to know our Showgirls. All enquiries, please contact the Showgirl Coordinator Pat Guthrie on H: 4237 7714 or M: 0412 521 727

**Mark the date on your calendar for a great night out.**

## Pavilion Restaurant

### fully licensed

72-76 Queen St Berry NSW 2535  
Ph: 02 4464 1074  
Email: [restaurant@berrymotel.com.au](mailto:restaurant@berrymotel.com.au)



Fine Food & Wine  
in a Relaxed Atmosphere  
Emphasis on Local Produce.

Dinner Tuesday-Saturday  
Breakfast Tuesday-Sunday  
Available for Special Functions

MONDAY - FRIDAY \$37 MENU AVAILABLE  
[www.berrymotel.com.au](http://www.berrymotel.com.au)

## Grime Control Window Cleaning

is soon to **Celebrate 20 years**  
in the **Shoalhaven**  
from **Berry to the Basin.**

Paul and his two daughters Melinda & Michelle are Reliable - Honest - Trustworthy and are now expanding their Sister business Warratah Cleaning services to include house and end of lease cleaning.

**Please contact**

**4448 5335 or**  
**0400 771 396**

[grimecontrol@hotmail.com](mailto:grimecontrol@hotmail.com)



# COMBATING ILLEGAL DUMPING AND REDUCING WASTE

Member for Kiama Gareth Ward today announced that local Councils, community groups and industry in the Kiama electorate can now apply to share in \$40.6 million of funding over the next four years to improve recycling, combat illegal dumping and reduce waste going to landfill.

Mr Ward said that the New South Wales Government is dedicating \$43.6 million over four years to tackle asbestos and problem waste.

"The first round of grants for local Councils, industry and community organisation are now available as part of the State's largest ever commitment to waste reduction – the \$465.7 million Waste Less, Recycle More initiative managed by the NSW Environment Protection Authority," he said.

"The grants are being jointly managed by the EPA and the NSW Environmental Trust and tackle a range of recycling and waste issues including problem wastes such as paints, lead acid batteries, and asbestos.

"This funding program has been designed to support councils, industry and community organisations to reduce waste and increase recycling in line with the state waste targets.

"Applications are now open for the first round of funding for five separate grants, totalling \$40.6 million over four years, to facilitate improvements in infrastructure, food waste avoidance, organics collection and illegal dumping," Mr Ward said.

NSW Environment Minister Robyn Parker said that the EPA will also spend \$3 million trialling a new Householders' Asbestos Disposal Scheme from next year that will waive the waste levy on asbestos and reduce tip fees in selected council areas for 12 months.

"Asbestos disposal is an increasing community concern as more home renovators undertake works on pre-1990 homes, so this trial will pilot innovative approaches to increase the lawful disposal of asbestos and discourage illegal

operators by reducing the financial advantage," Ms Parker said.

"As well as removing the waste levy on asbestos in participating areas, the EPA will contribute \$50 per tonne towards the costs of removing and transporting wrapped bonded asbestos that is disposed of as part of the scheme."

Ms Parker said the trial will run at selected councils and businesses across the waste levy and non-levy paying areas and results will be evaluated by independent experts to inform the EPA's decisions on asbestos disposal into the future.

"It is important that we continue to explore new opportunities to better manage our waste now and into the future and that is what Waste Less, Recycle More enables us to do," Ms Parker said.

"More than six million tonnes of waste goes to landfill in NSW each year and much of this waste can be re-used and recycled.

"This funding will ensure NSW continues to improve recycling targets by providing an integrated approach that encompasses community education; funding for improved infrastructure and services to make it easier for households and businesses to better manage their wastes.

"I encourage all eligible parties to explore the available grants and lodge an application to help reduce waste and increase resource recovery," Ms Parker said.

## Waste Less, Recycle More Grants include:

- \$16.22 million Local Government Organics Collection Systems Program – to help councils implement new or enhance existing household kerbside collection services for organic waste;
- \$1.4 million Love Food, Hate Waste program – to support food avoidance education and awareness projects with Love Food Hate Waste partners;

- \$11.35 million for Community Recycling Centres – to establish infrastructure for community recycling centres in the levy paying council areas by upgrading existing facilities, constructing new facilities, or trialling innovative solutions where a fixed facility is not practicable;
- \$9.65 million Resource Recovery Facility Expansion and Enhancement Program (waste-levy regulated area) – to stimulate and accelerate investment to enhance existing recycling facilities; and
- \$2 million Combating Illegal Dumping: Clean-Up and Prevention program – to identify local dumping sites and implement prevention and clean-up action.

The Combating Illegal Dumping: Clean-Up and Prevention program and the Householders' Asbestos Disposal Scheme are managed by the EPA.

The EPA and Environmental Trust will be holding a series of grant information sessions in November. For information please visit <http://www.epa.nsw.gov.au/waste/wasteless.htm>.

Application closing dates: All grants are open until 3rd February 2014 except for the Love Food Hate Waste program which is open until 28th February 2014 and the Householders' Asbestos Disposal Scheme which is open until 9th December 2013.

For more information or to apply visit:  
<http://www.epa.nsw.gov.au/waste/wasteless.htm>.

Waste Less, Recycle More is a five year \$465.7 million initiative to reduce waste and increase resource recovery by supporting councils, industry and the community to provide a comprehensive approach to improve the management of waste materials in NSW. More information can be found on the EPA on the website at:  
[www.epa.nsw.gov.au/waste/wasteless](http://www.epa.nsw.gov.au/waste/wasteless).

**MEDIA:** Gareth Ward 0401 499 933 or Ben Blackburn 0423 466 358



**belle**  
PROPERTY

*Real Estate*

COMPILED BY GARY DALE, PRINCIPAL OF BELLE PROPERTY BERRY

## 10 Tips For First Time Investors

Property investment is not difficult. The key to success is having a plan and getting as much market information as possible in order to make objective decisions. Here are ten handy tips for first time investors

- 1 Take control by keeping up with trends in property values and the latest financial information
- 2 Pay off your home loan, or a large proportion of it, first.
- 3 Hold your investment property for a long-term plan and benefit from the regular booms that occur in property. Reinvest any tax rebates by making extra payments into your investment loan
- 4 Buy structurally sound houses or units and ensure new tenants do not have a consistent

history of damaging previous rental properties or not paying rent

- 5 Be aware of property market cycles. In Australia there is a boom in the real estate market every five to seven years on average, which means there is a market slump in between.
- 6 Discuss your financial position and your desire to invest in property with an independent expert in taxation accounting. The benefits of property investment may vary according to personal income levels and your age.
- 7 Don't let tax dominate your investment decision. The best investments work regardless of the tax benefits
- 8 Keep up the maintenance on your investment property. Neglected properties

do not appreciate in value as fast as other properties. It is also more difficult to lease out neglected properties, which results in loss of rental income.

- 9 Buy investment properties with your head not heart. Be guided by what a tenant would value in property.
- 10 Buy investment properties in areas which are familiar to you. But keep an eye out for opportunities in other suburbs, towns, or even cities where the property cycle may be at a more beneficial point for investing.

FOR FRIENDLY, PROFESSIONAL ADVICE REGARDING ANY REAL ESTATE MATTER, CONTACT ME ON (02) 4464 1636 OR CALL INTO OUR OFFICE AT 122 QUEEN ST, BERRY. WE LOOK FORWARD TO MEETING YOU

# SHOALHAVEN CITY COUNCIL

## News for Berry - COMMUNITY CONSULTATIVE BODY - BERRY ALLIANCE

The following Development Applications, Development Determinations and other items have been notified through the month and in accordance with Berry Alliance policy they have been placed on the Berry Alliance Notice Board in the window of the Post Office, posted on our web site [www.berryalliance.org.au](http://www.berryalliance.org.au) and printed in the next available issue of the Town Crier. The Berry Alliance is the Community Consultative Body in Berry and we advertise all items that we are advised of by council so community members can have their say.

**Please Note:** Council now have DA Tracking available on their web site where all details including submissions are displayed for your information. Go to: [www.shoalhaven.nsw.gov.au](http://www.shoalhaven.nsw.gov.au) and go to DA Tracking.

### Applications Received

CD13/1297	Inground Fibreglass Swimming Pool 44 Schofields Lane, BERRY - 14-Oct-13
DA13/2101	New Dwelling - Part 2 Storey for Proposed Lot 50 in Lot 35 DP 1085668 Huntingdale Park Rd, BERRY - 15 Oct-13
DA13/2102	New Single Storey dwelling on Proposed Lot Huntingdale Park Rd, BERRY - 15-Oct-13
DA13/2103	Single Storey Dwelling on Proposed Lot 51 of Approved SF9320 Huntingdale Park Rd, BERRY - 15-Oct-13
DA13/2104	Single Storey Dwelling for Proposed Lot 38 Huntingdale Park Rd, BERRY - 15-Oct-13
DA13/2105	Single Storey Dwelling on Proposed Lot 37 of Approved SF9320 Huntingdale Park Rd, BERRY - 15-Oct-13
CD13/1305	Swimming Pool - Inground 344 Agars Lane, BERRY - 16-Oct-13
CD13/1312	Dwelling Additions 26 Clarence St, BERRY - 21-Oct-13
DA13/2157	New Rural Dwelling single storey dwelling - Agars Lane, BERRY - 24-Oct-13
CD13/1325	Inground Swimming Pool 10 The Gables, BERRY - 25-Oct-13
DA13/2166	Urban Dwelling Additions -extensions to rear of dwelling and 2 49 Windsor Dr, BERRY - 28-Oct-13
DA13/2183	Rural Dwelling Additions (RA) - alterations & additions to existing dwelling including demolition of existing garage shed 40 Wharf Rd, BERRY - 30-Oct-13

DA13/2170 Inground fibreglass swimming pool 1395E Bolong Rd, COOLANGATTA - 28-Oct-13

DA13/2202 Removal of existing deck and replace with new roofed deck 21 Wattamolla Rd, WOODHILL - 1-Nov-13

### Applications Determined

DA13/1640	Detached Colorbond Shed - 85 Tannery Rd BERRY - Approved - 18-Oct-13
DA13/1937	Two Storey Additions & Removal of Existing Detached Metal Garage - 11 Ford St BERRY - Approved - 18-Oct-13
CD13/1305	Swimming Pool - Inground 344 Agars Lane BERRY - Approved - 15-Oct-13
DA13/1802	Proposed three new work/storage sheds and carports - 16 Coolangatta Rd COOLANGATTA - Approved - 18-Oct-13
DA13/2030	Demolition of Existing Swimming Pool 321 Bryces Rd - FAR MEADOW - Approved - 15-Oct-13
CD13/1325	Inground Swimming Pool - 10 The Gables BERRY - Approved - 22-Oct-13
DA13/1780	First Occupancy/Fitout. Shop 4 - Restaurant/ Takeaway Food - 58 Albert St BERRY - Approved - 28-Oct-13
DA13/2004	Change of Use to Gelato and Coffee Bar - 114 Queen St BERRY - Approved - 31-Oct-13
DA13/2007	Detached Machinery Shed - Agars Lane BERRY - Approved - 6-Nov-13

Applications are advertised in accordance with Council's Community Consultation Policy for Subdivision and Development Applications and the Formulation of Development Guidelines and Policies.

Please note, however, that not all applications on this list will be advertised and that advertising may not commence immediately, particularly if important documentation has been omitted from the application. If an application is required to be advertised, the relevant community associations will be separately notified of the advertising period and the closing date for receipt of submissions.

### Enquiries

If an application on this report is of particular interest to your Association, or you would like to enquire if the application has been or will be advertised, please contact Council on: (02) 4429 3111. The development and subdivisions applications may be viewed on Council Website (DA Tracking) [www.shoalhaven.nsw.gov.au](http://www.shoalhaven.nsw.gov.au)



## BERRY MUSIC CENTRE

### For all Your Musical Needs

30 Years Experience in the Music Industry  
Musical Instruments and Accessories  
Sheet & Print Music • Digital Sheet Music  
Audio Equipment  
CDs • Music & Movie DVDs • Music Giftware  
Music & Movie Memorabilia • Vinyl (Records)

BOOKING AGENT - SHOALHAVEN ENTERTAINMENT CENTRE

**BERRY MUSIC CENTRE**  
SHOP 1/118 QUEEN STREET, BERRY NSW 2535  
**4464 1284**

[berrymusiccentre@gmail.com](mailto:berrymusiccentre@gmail.com)  
[www.berrymusiccentre.com.au](http://www.berrymusiccentre.com.au)  
[www.facebook.com / BerryMusicCentre](http://www.facebook.com/BerryMusicCentre)



### My Secret Sewing Days'

## SEWING CLASSES

Located in a rural setting between  
**Gerrigong & Berry at Broughton Village,**  
the studio provides modern machinery to help you  
create professional looking clothes easily.

**Classes have now commenced**  
on Thursday and Saturday  
afternoons from 1-3pm  
with new timeslots  
available on demand.  
Just bring along a project  
that you want to make  
and work at your own pace  
under Barbara's guidance.



Higher School Certificate textile tutoring is now available.

[www.mysecretsewingdays.com.au](http://www.mysecretsewingdays.com.au)  
**0408 624 623**

## OPEN DAYS AT BUNDANON

Wander through the Bundanon Homestead and Arthur Boyd's Studio. Take a bushwalk or guided tour. Tea and coffee available. Bring a picnic lunch.

**Open every Sunday 10.30am-4pm**  
**January open every Saturday and Sunday 10.30-4pm**

Cost: \$12 adults, \$8 concession  
Children under 16 FREE



## THELMA PLUM RIVERSDALE CONCERT

Join award winning singer-songwriter Thelma Plum as she presents her beautiful folk-rock sounds in concert at Riversdale.

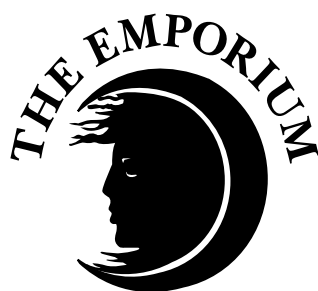
**Sunday 26 January 2pm,**  
Riversdale

Cost: \$25 adults, \$20 concession,  
children under 16 FREE

**bookings: bundanon.com.au**

**Ph: 4422 2100**

## BUNDANON TRUST



**FOOD CO**

*Berry NSW*

The Emporium Food Company is a gourmet deli and café, sourcing gourmet fare from all over the globe.

If there is something you can't find we will source it for you.

Or you can sit in-store and enjoy a light lunch with Toby's Estate Coffee.

**127B Queen Street Berry NSW 2535**

**T: 4464 1570 F: 4464 3291**



# Calendar of Events

## December

**1st December** – Sunday Berry Markets at the Berry Showground. Contact info: berrymarkets@bigpond.com ph. 44 641 476 Fridays only 10am-2.30pm

**4th December** - Wednesday – Berry Computers for Seniors meets in the Uniting Church Hall, 69 Albert Street, Berry from 9.00am to 12.30pm. To assist mature aged members of our community to use and enjoy the benefits of computer technology. Phone Kevin Watson: 02-4448-6267, email berrycfs@gmail.com.

**4th December** – Wednesday - 5.45pm - Grand Santa Parade and kids activities afterwards. See [www.berry.org.au/christmas](http://www.berry.org.au/christmas) for details.

**5th December** – Thursday – CCB Meeting 6.30pm at Berry Courthouse.

**6th December** - Friday - CWA Berry Christmas lunch Nowra Golf Club 12:30-1:00pm

**10th December** - Wednesday - Tracks to the Future and le Tour de Berry want your opinion and input. Community Meeting Berry Courthouse, 6pm. See page 2 for more information.

**13th December** –Friday - CWA monthly meeting from 1pm at the CWA rooms Victoria Street. Enquires Marie 4423 2164 or Yvonne 4441 6656 or [www.cwaofnsw.org.au](http://www.cwaofnsw.org.au)

**14th December** – Saturday - Street stall in Broughton court Berry for the Leprosy Mission commencing at 8.30am. All cakes will be homemade, come along and get Christmas goodies.

**14th December** – Saturday 2.30pm. Shoalhaven Lydian Singers at St Patrick's Catholic Church, Berry. A French themed Christmas Concert with Camille Saint-Saëns' 'Christmas Oratorio' and carols originating in France. Tickets: \$20, Concession \$15 from Shoalhaven Visitors Centre. [www.lydiansingers.org.au](http://www.lydiansingers.org.au)

**14 December** – Saturday - Berry Produce Market held 8am to 2pm in Andrew Place Park, 102 Queen Street. Providing fresh produce every second Saturday and fourth Sunday of the month. Enquires: contact Tricia on 0425 842 909.

**15th December** - Sunday 2.30pm. Shoalhaven Lydian Singers at Nowra School of Arts, Berry St, Nowra. A French themed Christmas Concert with Camille Saint-Saëns' 'Christmas Oratorio' and carols originating in France. Tickets: \$20, Concession \$15 from Shoalhaven Visitors Centre. [www.lydiansingers.org.au](http://www.lydiansingers.org.au)

**18th December** - Wednesday until 8pm - Late Night Shopping with great discounts for locals. See [www.berry.org.au/christmas](http://www.berry.org.au/christmas) for details.

**22nd December** – Sunday - Berry Produce Market held 8am to 2pm in Andrew Place Park, 102 Queen Street. Providing fresh produce every second Saturday and fourth Sunday of the month. Enquires: contact Tricia on 0425 842 909.

## Future Dates

**11 January** – Saturday - Berry Produce Market held 8am to 2pm in Andrew Place Park, 102 Queen Street. Providing fresh produce every second Saturday and fourth Sunday of the month. Enquires: contact Tricia on 0425 842 909.

**26 January** – Sunday - Berry Produce Market held 8am to 2pm in Andrew Place Park, 102 Queen Street. Providing fresh produce every second Saturday and fourth Sunday of the month. Enquires: contact Tricia on 0425 842 909.

**28th January** - Tuesday- Zonta Club of Berry dinner meeting @ Gabby's 6.30 for 7

**8 February** – Saturday - Berry Produce Market held 8am to 2pm in Andrew Place Park, 102 Queen Street. Providing fresh produce every second Saturday and fourth Sunday of the month. Enquires: contact Tricia on 0425 842 909.

**20th February** – Thursday - Annual General meeting for the Leprosy mission Auxiliary will be held at 17 Gwenda Ave., Berry commencing at 1.30 pm. We would welcome your attendance and support

# Calendar of Events



**23 February** – Sunday - Berry Produce Market held 8am to 2pm in Andrew Place Park, 102 Queen Street. Providing fresh produce every second Saturday and fourth Sunday of the month. Enquires: contact Tricia on 0425 842 909.

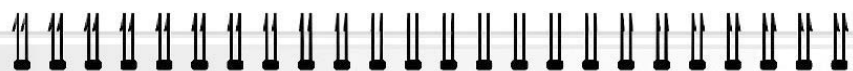
**25th February** - Tuesday - Zonta Club of Berry dinner meeting @ Gabby's 6.30 for 7

**8th March** - Saturday - International Women's Day and Zonta Rose Day Breakfast. Venue TBC

**8 March** – Saturday – Berry Produce Market held 8am to 2pm in Andrew Place Park, 102 Queen Street. Providing fresh produce every second Saturday and fourth Sunday of the month. Enquires: contact Tricia on 0425 842 909.

**23 March** – Sunday – Berry Produce Market held 8am to 2pm in Andrew Place Park, 102 Queen Street. Providing fresh produce every second Saturday and fourth Sunday of the month. Enquires: contact Tricia on 0425 842 909.

**6th April** - Sunday - Zonta Pre-loved Clothing Sale @ Berry Markets as our numbers are becoming very low indeed and we would like to continue the group so we need your support.



## Mary's Book

**Events and major attractions around Berry** - For further information regarding each event please refer to community group listing on the next page.

- |                                   |   |
|-----------------------------------|---|
| <b>31st Jan/1st Feb</b>           | Berry Show Society Annual Berry Show                            |
| <b>March 17th-24th</b>            | Berry Alliance host Seniors Week celebrations – Berry           |
| <b>May 25th</b>                   | Berry Rotary Club presents the<br>Berry Celtic Festival         |
| <b>July Each Year</b>             | Berry Alliance presents a three week event:<br>Le Tour de Berry |
| <b>AUGUST 2nd-3rd 2014</b>        | Berry Garden Club Annual Camellia Festival                      |
| <b>SEPTEMBER 11,12,13,14,2014</b> | Berry Garden Clubs Annual Garden festival                       |

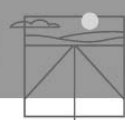
## Fire Permit Update (19)

Please be advised that as of 1200 Hours Sunday 10 November 2013, the current fire permit suspension has been lifted for the Shoalhaven Rural fire District.

Residents may now commence burning once again providing they follow all conditions set down by the issued permit. This includes having an in date permit and notifying the Shoalhaven Fire Control Centre and neighbours 24 hours prior to burning.

**Any inquiries can be forwarded to the Shoalhaven Fire Control Centre on (02) 4424 4424 between 8am and 5pm Monday to Friday.**

Tim Harvey  
& Associates



### New Clinic at 'the space'

1/98 Queen Street  
(behind Hedgehogs Coffee Shop)

#### Tim Harvey

Counsellor and Psychotherapist  
specialising in Business and Life Coaching  
Relationships, Conflict Resolution  
and Anger Management.

Phone 0414 704 087 Web [www.timharvey.com.au](http://www.timharvey.com.au)  
email [counselling@timharvey.com.au](mailto:counselling@timharvey.com.au)



## BUILDING THE WAY YOU IMAGINED IT.

J2 Build has just launched on the South Coast.

Jacques is an award winning master builder specialising in architecturally designed homes with minimal ecological footprint.

To discuss your plans call  
0404 077 004

[www.j2build.com.au](http://www.j2build.com.au)



**ACCESS**  
STORAGE CENTRE



- Household & Commercial Storage
- Climate Controlled Wine Storage
- Units individually alarmed
- Boxes & Transportation Arranged
- Free Move in Service

Ph: **4422 1955**

Cnr Merroo Rd & Victa Way  
Bomaderry

# Berry Community Groups

If your Berry Community Group is not listed here please return the form sent out or contact the Berry Alliance for the form to complete to register.

<b>Berry Alliance Inc.</b> PO Box 202 Berry 2535 info@berryalliance.org.au	<b>0449 569 059</b> www.berryalliance.org.au
<b>Berry Alliance Town Crier</b> PO Box 202 Berry 2535 towncrier@berryalliance.org.au	<b>0428 037 572</b> www.berryalliance.org.au
<b>Berry Chamber of Commerce &amp; Tourism Inc.</b> PO Box 216 Berry 2535 info@berry.org.au	<b>4464 3122</b> www.berry.org.au
<b>Australian Decorative Fine Arts Society</b> PO Box 269 Berry 2535 Monthly, 7.30pm at Berry School of Arts	<b>4464 3242</b> shoalhavenadfas@bluebottle.com
<b>Australian Red Cross</b> PO Box 249 Berry 2535 1st Wednesday each month at 2.00pm, Berry Uniting Church	<b>4464 2612</b>
<b>Australian Labor Party Berry Shoalhaven Heads Branch</b> 78 Woodhill Mountain Rd Berry 2535 2nd Wednesday Monthly, Hotel Berry, 6.30pm meeting	<b>4464 3965</b> adriandee@bigpond.com
<b>Berry Alcoholics Anonymous</b> Meets every Thursday Night at 7.30pm 34 Alexander Street Berry www.shoalhavenaa.com.au	<b>1300 903 392</b>
<b>Berry Al Anon Family Group</b> For family & friends of problem drinkers Meet every Tuesday at 7pm Berry Uniting Church Hall, Albert Street, Berry	<b>4448 8231</b>
<b>Berry Bridge Club INC</b> PO Box 366 Berry 2535 Meets Saturdays @ 12.45pm-4.30pm at the Masonic Lodge Community Hall	<b>4422 3343</b> mareaaellen1@bigpond.com
<b>Berry Community Activities Centre Inc.</b> Berry Community Craft Cottage 12 Prince Alfred St Berry 2535 1st Monday Monthly, 5pm @ Muir House - berrymarkets@bigpond.com	<b>4464 1476</b>
<b>Berry Computers for Seniors</b> PO Box 103 Berry 2535 1st & 3rd Wednesday monthly, 10 – 12noon Uniting Church Hall, 69 Albert Street Berry.	<b>4448 6267</b> berrycfs@gmail.com
<b>Berry Community Pre-school</b> PO Box 143 Berry 2535 berrypreschool@bigpond.com	<b>4464 1764</b> www.berrypreschool.org.au
<b>Berry Courthouse Conservation Committee</b> PO Box 218 Berry 2535 2nd Monday Bi-monthly at 5.30pm at the Berry Courthouse	<b>0458 369 266</b>
<b>Berry Crafters &amp; Quilters</b> Meets each Wednesday 10am – 4pm at Muir Cottage, Prince Alfred Street mford.646@gmail.com	<b>4464 3788</b>
<b>Berry &amp; District Garden Club</b> PO Box 122 Berry 2535 3rd Tuesday Monthly, 7.30pm Masonic Village Community Room adriananddee@bigpond.com	<b>4464 3965</b> www.berrygardens.org.au
<b>Berry Drama group</b> Lesley Carter Facebook: Berry Drama Group	<b>4421 6565</b> berrydramagroup1@gmail.com
<b>Berry &amp; District Historical Society Inc.</b> PO Box 153 Berry 2535 3rd Monday Monthly, 1pm at the Berry Museum	<b>4464 3097</b> berrymuseum@bigpond.com
<b>Berry Ethics Society</b> PO Box 363 Berry Meets 1st Monday of each month at the Berry Hotel	<b>0451 153 332</b> berry.ethics@gmail.com
<b>Berry Evening View Club</b> PO Box 76 Berry 2535 3rd Wednesday monthly, 7pm Berry Bowling Club	<b>4464 1032</b> pamcoles@optusnet.com.au
<b>Berry Rotary Club</b> PO Box 81 Berry 2535 Every Thursday 6pm for 6.30pm at Bowling Club	<b>4464 3636</b> smithgf@bigpond.com www.berryrotary.org.au
<b>Berry Landcare</b> PO Box 422 Berry NSW 2535 See monthly article for working bees.	<b>4464 2198</b> berrylandcare@gmail.com.
<b>Berry Leprosy Mission Auxiliary</b> 17 Gwenda Avenue Berry 2535 3rd Thursday Bi-Monthly (June, Aug etc.) 1.30pm above address.	<b>4464 1693</b> trish.n@optusnet.com.au
<b>Berry Masonic Village Auxiliary Inc.</b> PO Box 435 Berry 2535 3rd Wednesday monthly, 9.30am Activities Room Berry Masonic Village	<b>4464 1774</b>
<b>Berry Meals on Wheels</b> PO Box 221 Berry NSW 2535	<b>4464 1604</b> 3rd Monday monthly at 9am CWA Hall Berry
<b>Berry Men's Shed</b> PO Box 103 Berry 2535 Tuesdays and Thursdays 10am- 4pm North Street Berry	<b>4464 3956 / 4464 2619 A.H</b> e: richardcwiseman@hotmail.com www.berrymensshed.com.au
<b>Berry Playgroup</b> PO Box 279 Berry NSW Friday mornings at St Luke's Hall, via Victoria St	<b>0415 519 262</b> berryplaygroup@yahoo.com.au Facebook: Berry PlayGroup
<b>Berry Public School P&amp;C Association</b> PO Box 222 Berry 2535	<b>4464 1158</b> berrypandc@gmail.com
<b>Berry RSL Sub Branch</b> PO Box 3307 North Nowra 2541 1st Tuesday Monthly at 9.30am Sub Branch Hall-26 Alexandra St Berry	<b>4423 1960</b> stuart.christmas@defence.gov.au
<b>Berry School of Arts</b> Office open Thurs and Fri 10am till 3pm.	<b>4464 1476</b>
<b>Berry Show Society Inc.</b> PO Box 173 Berry 2535 Meet 1st Tuesday monthly at Committee Rooms at the Showground berryshow@virtualcity.com.au	<b>4464 1567</b> www.berryshow.org.au
<b>Berry Showground Management Committee</b> PO Box 443 Berry NSW 2535 Meet 2nd Monday Bi-monthly 7.30pm Old Council Chambers 24 hour caretakers / bookings Tony & Vicki Pye	<b>4448 6093</b> <b>0427 605 200</b>

<b>Berry Silver Band (est. 1897)</b> 6 Clarence Street Berry 2535 Meet Monday evenings 7.30-9.30pm, Agricultural Hall, Berry Showground	<b>Owen 4464 1250 / Kaye 44651240</b> kayecj@westnet.com.au
<b>Berry Spinners and Weavers</b> PO Box 377 Berry 2535 Thursdays 10-12noon at Berry Showground Hall	<b>4464 3081</b> berryspinnersandweavers@gmail.com
<b>Brogers Creek Landcare</b> 53 Wattamola Rd Wattamola NSW Last Saturday of each month 2.30-4.30pm.	<b>4465 1482</b> Andrew.fitzsimons@det.nsw.edu.au
<b>Country Women's Association – Berry Branch</b> PO Box 321 Berry 2535 2nd Friday each month at 1pm in the CWA Rooms.	<b>4464 3187</b> marcia@shoalhaven.net.au
<b>David Berry Hospital Auxiliary</b> PO Box 285 Berry 2535 2nd Monday Monthly, 12.30pm David Berry Hospital Conference Room	<b>4464 1774</b> bke25349@bigpond.net.au
<b>Friends of Berry School of Arts</b> PO Box 393, Berry NSW 2535 Meetings TBA	<b>4464 1313</b> e info@friendsofberry.net <b>www.friendsofberry.net</b>
<b>Hands Across NSW Inc</b> PO Box 162 Cambewarra NSW 2540 Meets 1st Sunday, monthly at Broughton Lodge, Berry Agriculture Hall	<b>4446 0567</b> e hands.across.nsw@gmail.com
<b>Jaspers Brush Airport Action Group Inc.</b> PO Box 428 Berry NSW 2535 Meeting – as convened	<b>info@takeaction.org.au</b> <b>www.takeaction.org.au</b>
<b>Knit with Love</b> c/ 34 Princess St Berry 2535 - terryandlyn@gmail.com Meets Friday 1pm – 3pm St Luke's Anglican church hall starts 8/2/2013 except Dec/Jan	<b>Lyn 4464 3651</b>
<b>Liberal Party of Australia – Berry Branch</b> 121 Kangaroo Valley Rd Berry 2535 Meets 1st Monday of the month 6.30pm for 7pm start at Gabbys of Berry	<b>0412 550 480</b> hartwell@bigpond.com
<b>Lodge Broughton 131</b> PO Box 2092 Bomaderry NSW 2541 1st Wednesday monthly Agricultural Hall cnr Albany & Victoria Sts	
<b>Mainly Music</b> Berry Community Church hall – for children under five and parent /carers Meets Tuesdays during school term 10-11.30am \$4 per family	<b>4464 1693</b>
<b>Penwood Rail Road Inc.</b> B215a Princes Highway Jaspers Brush 2535. Running day - 1st Sun monthly - visitors welcome	<b>4464 1201</b> johnandlynclark@bigpond.com
<b>Probus Club of Berry</b> PO Box 68 Berry 2535 Meets 2nd Tuesday monthly, 9.30am Berry Masonic Village Hall	<b>4448 6053</b> <b>hughmc0803@gmail.com</b>
<b>RedBerry Quilters</b> PO Box 324 Berry NSW 2535 4th Friday monthly @ St Luke's Anglican Church Hall, Princess St, Berry.	<b>4464 2587</b>
<b>Shoalhaven Arts Society Inc.</b> Meets 2nd Thursday each month except Jan 12:30 - 3:30 Berry Showground under the Pavilion editor@shoalhavenartsociety.com	<b>Linda 0402 279 154</b>
<b>Shoalhaven Historic Vehicle Club Inc.</b> PO Box 1, Nowra NSW 2541	<b>4464 1723</b> abinnington@shoal.net.au
<b>Shoalhaven Poultry Group</b> 161 Kangaroo Valley Road info@shoalhavenpoultry.com.au	<b>0410 548 704</b> 1st Wednesday each month above address www.shoalhavenpoultry.com.au
<b>St Vincent de Paul Society</b> PO Box 77 Berry 1st Monday monthly 7.30pm St Patricks Church Hall	<b>0410 548 704</b> e info@shoalhavenpoultry.com.au
<b>Transformers Youth Group</b> St Luke's Anglican Church 68a Princess St Berry office@berry.anglican.asn.au Meets every Friday 7-9pm during school term. Contact Grant Abbott, Youth Minister	<b>4423 5652</b>
<b>Zonta Club of Berry</b> PO Box 302 Berry 2535 Meets 4th Tuesday monthly for dinner.	<b>Ph-0411318193(Jean) or 42322881(Lorna)</b> email-berry@zontadistrict24.org Website-www.zontadistrict24.org

## SPORTING GROUPS

<b>Berry Hockey Club</b> PO Box 4055, Nowra East NSW 2541 hj.simms@bigpond.com	<b>0412 218 704</b> www.berryhockeyclub.com.au
<b>Berry Netball Club</b> 1 Barwon St Bomaderry Meets monthly at the Great Southern Hotel	<b>0417 285 789</b> MT816834@bigpond.net.au
<b>Berry Men's Bowling Club</b>	David Armstrong <b>44641543</b> Harry Harrop on <b>44643043</b>
<b>Berry Junior Mixed Touch Football</b> 7 Boran Place Berry 2535 School term 4 – Thursday 4pm till 6pm at the Berry Sporting Complex, North St Berry	<b>0431 530 543</b> becandtom2@bigpond.com
<b>Berry Riding Club</b> 445 Coolangatta Road Berry 2535 jasiiy@bigpond.net.au	<b>4464 1143</b> 1st Tuesday monthly at the Berry Hotel www.berryridingclub.com
<b>Berry Shoalhaven Heads Cricket Club</b> PO Box 206 Berry NSW 2535 2nd Monday of each month during cricket season at the Berry Hotel	<b>0422 688901</b> www.bshcc.nsw.cricket.com.au
<b>Berry Shoalhaven Heads Junior League</b> PO Box 162 Berry 2535 4th Wednesday Monthly, 7.30pm at the Berry Bowling Club	<b>4464 1896</b> berrysjuniorleague@gmail.com
<b>Berry Tennis Club</b> PO Box 133 Berry NSW 2535 7.30pm bi-monthly starting in February each year, Berry Tennis Club, North St Berry	<b>0419 299 234</b> e: berrytennis@hotmail.com

## EMERGENCY 000

Police Assistance Line (non-urgent Police reports) 131 444  
Berry Police 4464 2175 - Fire and Rescue NSW 4464 1008 or 000  
Rural Fire Brigade (Broughton Vale) 4464 1522



## Council reminding residents to remain safe around home pools

Shoalhaven City Council is reminding local residents to ensure the safety of their residential pool following a marked increase in drowning fatalities over the previous year.

The 2013 Drowning Report, recently released by Royal Life Saving, illustrates a 95 percent increase in the number of Australians drowning in swimming pools over the previous 12 months.

Despite a number of targeted campaigns illustrating the danger of residential pools, the number of drownings across Australia rose to 43 over the previous 12 months, nearly double the previous year's figure of 22.

Children under five years of age made up 44 percent of all drowning deaths in pools with lack of supervision accounting for 94 percent of these fatalities.

Mayor, Joanna Gash said with the warmer months upon us it was vital that all local residents ensured the safety of their residential pools.

The Mayor said as part of a new safety initiative all residential pools need to be registered with the NSW State Government by Tuesday 19 November.

"With an average of six children drowning in NSW backyard pools each year it is important that local residents ensure the safety of their residential pool and surrounding barrier," said Cllr Gash.

"Backyard pools need to be fixed with a compliant barrier to ensure that children are unable to enter without the assistance of an adult.

"The new registration process has been designed to draw further attention to the safety aspects of owning a pool and ensure that residential pool owners are aware of any safety defects in their property."

"The Swimming Pool Registration is a further important step towards reducing needless deaths occurring within residential pools."

"It is vitally important that any local resident who were unable to register their pool previously do so as soon as possible by visiting [www.swimmingpoolregister.nsw.gov.au](http://www.swimmingpoolregister.nsw.gov.au)."

Residents that fail to register their pool by the deadline face fines ranging from \$220 to \$2,200.

**CONTACT: Mayor Joanna Gash 0427 160 172**



## Council completes formal submission of Local Environment Plan

Shoalhaven City Council has completed the formal submission of the Shoalhaven Local Environment Plan after forwarding over 500 map sheets to the NSW Department of Planning and Infrastructure last week.

The written documentation was handed to the NSW Department of Planning and Infrastructure (DP&I) in September following Council's adoption of the draft Plan at the culmination of the Special Development Committee meetings.

The lodgement of the map sheets will enable the DP&I to complete their review and work towards the finalisation of the Plan.

Mayor, Joanna Gash said she was extremely pleased to see the entire document now with the DP&I.

"The completion of the mapping sheets represents the final component of the entire LEP lodgement process," said Cllr Gash.

"The Department of Planning and Infrastructure will now make the instrument changes and review the final draft SLEP before considering whether to make the Plan.

"I would again like to thank each of the community members that took the opportunity to make a submission as part of both the first or second exhibition process.

"I would also like to congratulate both the Councillors and Council staff for their ongoing commitment to seeing this important planning project to the stage of lodgement."

Mayor, Gash said it was envisaged that the draft SLEP will be completed by the end of 2013 or early in 2014 at the latest.

**CONTACT: Mayor, Joanna Gash - 0427 160 172**

## BerryHaven Veterinary Group



[www.berryhavenvet.com.au](http://www.berryhavenvet.com.au)

### **FREE House Call Service**

BHVG offers house calls at no extra charge and a FREE pet transport, food, medication & merchandise drop off service. Ph (02) 4464 3986 to book.

### **FREE Nail Clip and Nurse Pet Nutrition & Health Programmes**

Drop in and visit Rebecca or Joy at our clinic for a **FREE Pet Nutrition & Health programme**. Our nurses will discuss best feeding practices, weight control, arthritits diets etc. and give a **FREE nail clip to boot!**



YouTube



1/78 Albert St. Berry. NSW 2535

Mon-Fri 8am - 5.30pm

Sat 9am -10.30am

**OPEN ALL DAY WEEKDAYS**

**24 Hour Emergency Cover**

**Ph (02) 4464 3986**

### **Ticks Transmit Lyme Disease**

Described as the great imitator, Lyme disease often mimics other disorders e.g. Multiple Sclerosis, Chronic Fatigue Syndrome & Alzheimer's. For more info go to [www.berryhavenvet.com.au](http://www.berryhavenvet.com.au)

### **Pet of the Month**

Max, a 76kg Great Dane had a very close call last month with Gastric Dilation & Bloat. He made a great recovery from emergency surgery (although Mark's back hasn't) and from the photo, he is one happy fella.



# CHECK YOUR BARBEQUES THIS SUMMER SEASON

Member for Kiama Gareth Ward is reminding local residents and community groups across the Illawarra and Shoalhaven to check their gas and electrical barbeques and to be proactive when it comes to maintenance in preparation for a hot summer.

"Over the coming weeks in the lead up to the Christmas, many people across the region will be hosting their Christmas party barbeques with friends and colleagues," Mr Ward said.

"If you haven't already done so, now is the time to check that your barbeque is ready for the summer season.

"Gas connections should be regularly checked for leaks using soapy water. Also regularly check hoses and fittings for damage or wear and replace these parts when needed.

"Gas bottles must always be transported securely in the upright position in a cool space that is well ventilated – they must never be left in a closed vehicle," he said.

"Avoid using electric barbeques in the rain, near water or too close to pools and not to use barbeques with charcoal briquettes or other fuel products, including gas, inside confined spaces.

"All gas appliances including barbeques and portable camping equipment must be certified to be legally sold in New South Wales. All electric barbeques must be approved and marked.

"Owners of gas barbeques and portable appliances, including small cookers and camping lanterns, should check to make sure they are in good order and have the relevant approval marks before connecting to gas.

"Always check for leaks before lighting, and when lit, be aware of any unusual flame appearance or smells. Conduct any checks in a clear, safe location.

"Make barbeque gas and electrical safety a priority this summer," Mr Ward said.

You can find more information about gas and electrical product safety and check examples of gas and electrical approval marks on the Fair Trading website at [www.fairtrading.nsw.gov.au](http://www.fairtrading.nsw.gov.au) or call 13 32 20.



*friends of*  
**Berry School of Arts Inc.**

FOBSA was formed in April 2012 by a group of Berry residents unhappy with the way the grand old historic Berry School of Arts (BSA) was being used, managed and maintained.

Council was urged to assume direct management of this facility but declined. However, FOBSA's lobbying resulted in the calling for Expressions of Interest to obtain a new lessee.

FOBSA incorporated in May 2012 in order to participate in this process and submitted a substantive proposal. Council could not accept the terms of FOBSA's EOI so had no choice but to take over management of the BSA when the previous lease was terminated on 30 September 2012.

It is noteworthy that in the last 12 months more maintenance has been carried out than in the previous 12 years. Also the building has become much more user friendly and Council is to be applauded for this.

FOBSA has been successful in raising public awareness of the BSA's plight to the extent that the incoming government has pledged \$300,000 to improve the building. In view of this and our credentials, FOBSA offered to become Council's Advisory Group but instead Council has decided to establish a User Group Committee (UGC) with interested community members also welcome to nominate.

It is now up to the UGC to take up the initiative of ensuring that the BSA, this vital piece of community infrastructure, continues to be well maintained and used to its optimum potential.

FOBSA members are to be congratulated on being concerned enough to join this group and upon helping to achieve our sole objective of 'involving the Berry Community in the management and use of the Berry School of Arts'. It just shows that community action can get results.

Your committee urge as many people as possible to nominate for the new user group. Council will be publicising this but meantime you can contact Council's Donna Sullivan on 4429 3463 if you have any questions.

Having achieved its objective it is proposed that FOBSA Inc. be wound-up and members are invited to attend a Special General Meeting at 7pm on Monday 9 December at the Berry School of Arts to vote on this.

## The South Coast's waterfront local



The best of BBQ, by the water. Relax on the Shoalhaven with delicious local produce, expertly crafted cocktails and an all day bar menu. Open for lunch and dinner Tuesday to Sunday. Join us for the Summer Sessions, weekly at 3pm, featuring live music and \$5 jam jar cocktails.

**WHARF RD**  
RESTAURANT & BAR

A SMH Good Food Guide Awards 2014 hatted restaurant

10 WHARF RD, NOWRA | (02) 4422 6651 | [ENQUIRIES@WHARFRD.COM.AU](mailto:ENQUIRIES@WHARFRD.COM.AU) | [WWW.WHARFRD.COM.AU](http://WWW.WHARFRD.COM.AU)



# BERRY RESTAURANTS & CAFES, FUNCTIONS & CATERING GUIDE

*The following businesses have provided Vouchers for the Berry Alliance to provide to Berry Community groups to use for fundraising purposes or prizes. If you would like your business listed here (and on the web site) please contact Rick Gainford, Secretary Berry Alliance on 0449 569 059 or email [info@berryalliance.org.au](mailto:info@berryalliance.org.au)*

## Restaurants & Cafes

### Berry Jetz Café

1/94 Queen Street Berry - t 4464 3320

7 days - 8am to 5pm

### Berry Sourdough Bakery and Café

23 Prince Alfred Street Berry - t 4464 1617

Open Wednesday to Sunday - 8am - 3pm.

[www.berrysourdoughcafe.com.au](http://www.berrysourdoughcafe.com.au)

### Hedgehogs Coffee Shop

4/98 Queen Street, Berry - t 4464 3051

7 days - 8am to 4pm

[www.hedgehogscoffeeshop.com.au](http://www.hedgehogscoffeeshop.com.au)

### Hungry Duck

85 Queen Street Berry 2535 - t 4464 2323

[www.hungryduck.com.au](http://www.hungryduck.com.au)

Wednesday to Monday dinner from 6pm

### Just Delicious

Shop 3 / 62 Albert Street Berry - t 4464 3650

Open 7 days - 9am - 5pm.

### Mezzadellas Woodfired Pizza & Tapas

Shop 6/97-99 Queen Street, Berry - t 4464 2045

Dinner: Monday to Saturday from 5pm and Sunday from 3pm  
excluding public holidays

### Savannah Café

Stan Burt Arcade (shop 5 - in the arcade behind Cuckoo Corner)

Open 7 days 9am - 6pm (8am weekends) Evening Dining Tuesday,

Friday & Saturday

T: 4464 3880 [www.savannahcafebar.com](http://www.savannahcafebar.com)

Facebook: [facebook.com/savannahcafebar](https://facebook.com/savannahcafebar)

### The Berry Hotel

120 Queen Street - t 4464 1011

Open 7 days: Dinner 6pm - 9pm, Lunch 11:30am - 2:30pm

Breakfast on weekends 8am - 11am

### The Berry Tea Shop

Shop 1, 66 Albert Street, Berry - t 4464 1218

Open 7 days: 10am to 5pm

[www.theberryteashop.com.au](http://www.theberryteashop.com.au)

### Silos Restaurant

640b Princess Hwy Jaspers Brush - t 4448 6160

Lunch: Thursday - Sunday.

Dinner: Thursday - Saturday [www.silos.com.au](http://www.silos.com.au)

## Functions & Catering

### Berry Courthouse and Gardens

Corner Victoria and Albany Streets, Berry - t 0458 369 266

Functions, weddings, meetings inside and in gardens.

[www.berrycourthouse.org.au](http://www.berrycourthouse.org.au),

email: [functions@berrycourthouse.org.au](mailto:functions@berrycourthouse.org.au)

### Berry Jetz Café

1/94 Queen Street Berry - t 4464 3320

[berryjetz@bigpond.com](mailto:berryjetz@bigpond.com)

Catering and Functions available

### Broughton Mill Farm Guesthouse Berry

78 Woodhill Mountain Road Berry - t 4464 2446

Weddings, functions and conferences hosted and catered for on site.

[www.broughtonmillfarm.com.au](http://www.broughtonmillfarm.com.au) email: [bmberry@bigpond.net.au](mailto:bmberry@bigpond.net.au)

### Garnish Creative Catering

t 0432 559 078

Jo Jorgensen

[www.garnishcatering.com.au](http://www.garnishcatering.com.au)

### Savannah Café

Stan Burt Arcade (shop 5 - in the arcade behind Cuckoo Corner)

Open 7 days 9am - 6pm (8am weekends) Evening Dining Tuesday,

Friday & Saturday

T: 4464 3880 [www.savannahcafebar.com](http://www.savannahcafebar.com)

Facebook: [facebook.com/savannahcafebar](https://facebook.com/savannahcafebar)

## Restaurant & Café, Catering & Functions Guide 2014 - Renewals are now due

New participation agreements will be forwarded to existing businesses by the end of November.

New businesses are welcome to participate, please contact the Editor on 0428 037 572.

Participating businesses will be listed in the Guide for each edition in 2014.

**Please note: your new agreement and signed vouchers must be received by Monday 6th January in order for your business to remain a part of this promotion.**

# Berry Town Crier Advertising Rates & Requirements

## Why advertise in the Town Crier?

*The Town Crier is a community newspaper produced monthly by the Berry Alliance. Our current circulation is 2300. The Town Crier is distributed around Berry and its outer lying areas. Additional copies are given to shops, cafes, hairdressing salons, doctors and restaurants within the township to alert tourists as to what's happening in and around Berry.*

*The Town Crier is not funded from any other source; we receive no grants or public funding.*

**Berry Alliance Town Crier Board of Editors**

## Display Advertisements

Repeat rate applies to 3 or more issues with no changes and one invoice to be paid up front.

10cm x 1 column	\$105 / \$240 (repeat)	Dimensions - 10cm high x 6cm wide
10cm x 2 columns	\$133 / \$321(repeat)	Dimensions - 10cm high x 12cm wide
10cm x 3 column	\$176 / \$411(repeat)	Dimensions - 10cm high x 18.5cm wide
Full Page	\$290 / \$798(repeat)	Dimensions - 27cm high x 18.5cm wide

## Trades & Services

One box, no changes, one invoice paid up front. Dimensions are 6cm wide x 5cm high

1 issue	\$48
6 issues	\$198 (\$33 each issue)
12 issues	\$363 (\$30.25each issue)

## Calendar of Events page

One box, no changes, one invoice paid up front

1 issue	\$60
6 issues	\$276 (\$46 each issue)
12 issues	\$504 (\$42 each issue)

## Listing in Calendar of Events

Free if the event is listed in your paid advertisement for that issue.

You must request the listing at the time of submitting your advertisement.

Otherwise: \$30.00 per listing only.

## Full Length Column Advertorials

Advertorial can be used for local business owners and/or community groups not registered with the Berry Alliance to promote their fundraising event.

Advertorials must be of interest to the Berry community in the opinion of the Editor and Board, not just an advertisement. Could be information on a new business or a special event or similar.

1 full column	\$175 (max 400 words, less words when a logo or photo is used)
2 full columns	\$220 (max 800 words, less words when a logo or photo is used)

## Clairvoyant in Berry

Judy was born into a family of Clairvoyants and Palm Readers and for generations her family has been conducting readings that offer the opportunity to look into your past, present and future life.

Judy brings all of her skills as a psychic medium, clairvoyant and palm reader, as well as her background in Behavioural Psychology to your reading in order to offer you a comprehensive view into what is currently occurring in your life and where your current choices may lead into the future.

**IF YOU ARE LOOKING FOR GUIDANCE, CONFIRMATION OR SIMPLY A GREATER UNDERSTANDING ABOUT YOUR LIFE, A READING WITH JUDY WILL PROVIDE YOU WITH THIS.**

**PSYCHIC / CLAIRVOYANT PALMISTRY**

**JUDY WYNNE-JONES**  
CLAIRVOYANT IN BERRY



MOB: 0422 234 211

## Berry Men's Bowling Club.

Members are preparing for a busy time ahead. Plans are being made to commence the 2014 Club Championship Programme very early in the New Year. The Club Championships are open to all members and will include play in the Singles, Pairs, Triples and Fours.

In addition to Club Championships the Club will be entering two sides in the District Pennant competition that involves Clubs from Gerringong to Ulladulla. The Pennant competition is played in the Fours format and each side consists of three teams. Most of the Pennant matches are played on a Saturday afternoon with at home and away games.

Despite the forthcoming busy programme social bowls will still be played at 1.00pm Wednesday and Saturday afternoons. Bookings to play should be made at the Club or by telephoning 0488729229 by midday of the day of play.

Further information regarding playing bowls with the Men's Club can be obtained by telephoning the above number or David Armstrong on 44641543.

## THE BERRY AND DISTRICT GARDEN CLUB

THE GARDEN CLUB IS ON THE MOVE. It's good news, and a wonderful dilemma, that we have too many members to fit into our existing meeting place so we are moving to St Luke's Anglican Church Hall, 68A Princess Street, Berry in 2014. St Luke's is a great venue with plenty of room for members and visitors, lots of accessible parking and additional space for the social aspect of the meetings. We're looking forward to seeing everyone on Tuesday 18 February 2014 at 7.30pm for the first meeting in our new venue at St Luke's.

The Berry Garden Festival 2013 was an outstanding success. Despite harsh winds on the first day of the Festival and severe fire warnings for many districts throughout the weekend, there were 2,675 garden visits over the four Festival days. The Festival relies on the generosity of those who open their gardens to the general public and the enthusiasm of the visitors who come from near and far to enjoy the gardens. The Festival's success is attributable to the numerous volunteers who work tirelessly for many months before and during the Festival to ensure everything runs smoothly over the weekend. All the money raised from ticket sales is distributed to local charitable organisations; this year, Taste of Paradise, Red Cross (Young Parents' Program), Noah's Ark, Rural Fire Service Beaumont, Rural Fire Service

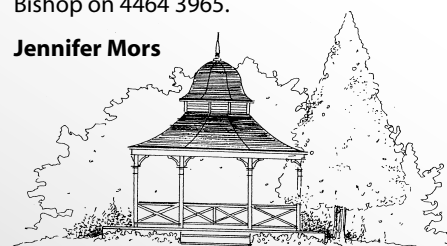
Berry, Arboretum Nowra, Berry Museum, Nowra Concert Band and Shoalhaven Kids received a much-needed boost to their funding.

The 25th Anniversary of the Berry Garden Festival will be celebrated in September next year, the month in which it was held in its early years. Blossoms and spring foliage will create a delightful focus for 2014's Festival.

The Garden Club Members' Annual End-of-Year Dinner on Tuesday 17 December at Gerroa Fisherman's Club is a celebration of friendship through gardening. Starting at 6.30pm, the evening promises good food, great company and spectacular views of Seven Mile Beach.

The Berry & District Garden Club meetings are held on the 3rd Tuesday of the month from February to November each year. Everyone is most welcome to come along to meet other gardeners, hear guest speakers and enjoy supper in the company of like-minded locals. If you would like to find out more, please contact Adrian Bishop on 4464 3965.

Jennifer Mors



THE BERRY AND DISTRICT GARDEN CLUB



Garden and lawn maintenance  
Hedging and pruning  
Tree lopping  
Acreage management  
Garden design and makeovers  
Green waste removal

Mob: 0431 342 382  
Ph: 4234 2383

# Berry RSL Sub-Branch Remembrance Day Commemoration Service

Remembrance Day was observed in Berry on Monday 11th November in the School of Arts Hall due to the inclement weather.

Mr Alan Mulley as MC, called on the Catafalque Guard to be mounted and then the gathering of some 70 community members was led in prayer by Rev Brendan Handel of the Berry Community Church.

Mr Ray Strong, President of the RSL Sub-Branch, in his address emphasised the importance of Australia's sacrifice in WWI, but also that we should also remember those lost in all other conflicts since up to the present. He also gave reference to the significance of the Poppy and a brief history on the evolution of the Remembrance Day ceremony as this year was the 20th anniversary of the burial of the Australian Unknown Soldier at the Australian War Museum in Canberra

Alan Mulley asked all to reflect on Australia's commitment to the tune of "Lest We Forget," at 11.00am requested that the one minutes silence be observed.

WO2 Stuart Christmas then read the tributes to LCpl Albert Jack VC (later promoted to Captain) and to Captain Bryce Duffey who was killed in a green on blue attack inside the Sorkh Bed Patrol Base in Afghanistan in 2011

Master Lachlan Sutton read a poem on the tragedy of war: by Ernest Rhys. Wreaths were laid as a mark of respect, followed by piper John Morrison playing the lament.

Senior Vice-President Dick Bird read The Ode, which was followed by the Last Post and the Rouse.

Alan Mulley on behalf of the Sub-Branch thanked those who had assisted; the Sydney University Regiment Wollongong Detachment Catafalque Guard, Berry Public School, piper John Morrison, and in particular the Sub-Branch Women's Auxiliary for their provision of morning tea.

Proceedings were concluded with the Australian National Anthem, and the dismounting of the Catafalque Guard.

The Berry RSL Sub-Branch would also like to express its appreciation to the Berry community at large for their magnificent support of the Poppy collection in the week prior to Remembrance Day - you can all be assured that these donations will be put to good purpose.

To any families who have anyone serving overseas on deployment whether it be Navy, Army or Air Force could you let the Hon. Sec. Stuart Christmas know as the Berry Sub-Branch is always mindful of the welfare of our local servicemen and to let them know that our thoughts are with them.

**If you have any queries, Stuart Christmas can be contacted via 0413 051 003 or [stuartfchristmas@gmail.com](mailto:stuartfchristmas@gmail.com)**



## SHOALHAVEN LIBRARIES ENCOURAGING E-READER TRIAL

Shoalhaven Libraries is encouraging local residents to consider borrowing an e-reader ahead of the upcoming holiday period.

Nowra library has a number of e-readers available either as a blank device or with books already pre-loaded by Library staff.

Shoalhaven Libraries Manager, Sarah Taylor said library staff were available to provide advice or a demonstration on how to operate an e-reader.

"Many people may be purchasing or receiving an e-reader as a gift this year, so borrowing one from us is a great way to trial them," said Ms Taylor.

"This is a perfect opportunity for those thinking of buying their own e-reader to trial one at the library and experiment with ours before making a decision.

"These devices have already proven a wonderful addition to our service with a number of free titles available to be downloaded from our library e-book and audio book service, Overdrive.

"With Shoalhaven Libraries closing from 24 December to 2 January an e-reader could also provide some great reading material over the Christmas break."

"I would certainly encourage our borrowers to come in and find out some more about the new technology and how it can benefit them."

**CONTACT: Shoalhaven Libraries Manager, Sarah Taylor - 4429 3702**



## Berry Acupuncture Pain Clinic

Shop 2/78 Albert Street Berry  
(in carpark behind IGA)

**Anita Binnington, phone 4464 2443**

+ With 25 years clinical experience

Treatment of all severe chronic and acute pain conditions.  
Chinese herbal treatments available with a special interest in all skin conditions.

Covered by all private health funds  
Government Registered Acupuncturist and Chinese Herbalist

**Open 6 days per week Monday - Saturday**  
By appointment and walk ins

## **Berry Alliance Community Consultative Continued from Page 1.**

- Significant population increase at holiday times: should this not be a reason for State government to give more money for road maintenance?
- How does SCC minimum standard compare with the Australian standard?

### **Martin Upitis' response:**

- Informed the agreement is that the remediation will take place before the handover to Council and handover will be in "near new condition".
- Road markings: RMS is not happy to fund road marking for Kangaroo Valley Road, so SCC has responded by putting dots on the road for guidance as a "stop-gap" measure.
- Coolangatta road has \$600,000 allocated for this year.

Council tries to address the issues that are of highest priority and considers Coolangatta road as a priority in the ongoing programme

- Factors to determine road repair:
- condition of road
- type of road: arterial road, rural roads
- speed limit
- an area of road which requires a lot of maintenance
- risk management (e.g. pavement failures)
- does the presence of acid sulphate soil require higher levels of funding for road works?
- Re-litter on the approach road to recycling depot: Martin Upitis suggested that community member requests regular litter pick up. He responded by asking "what is the policy?" Want them to come

regularly. MU suggested that it is a level of service that litter pick up occurs.

- **Martin Upitis ask that members of the community make their comments about "levels of service" to him directly.**

### **John Wells, Ward 1 Councillor and Deputy Mayor was welcomed.**

- He reassured committee members that councillors vote according to their own views even though they may have formed a team for the election. In addition to this, he informed the community that the development committee had ruled on the Far Meadow DA which had aroused such interest within the community. The DA was refused in view of illegal works, illegal application without plans for sewerage and for access to the property. no further action would be taken. He stated that Council has drawn a line in the sand on this issue.

Wells recognises that a priority is to given to roads and to necessitate a catch up with the \$35 million backlog Concerning "master planning": an important issue in government at all levels is local participation. Shoalhaven heads, CCB and community, through a participative process, have gathered data and created a strategic plan for the village, which includes attention to infrastructure, tourism, community services and a sense of place. Priorities have been listed in the plan has been published and endorsed by Council. Other villages are proceeding with their strategic plans and Council in order to encourage this is making resources available. Jessica Rippon has been appointed as CCB liaison officer and will help this process with templates and organising

community consultations.

The chairman announced that master planning for the Berry community would be the subject of the December CCB meeting.

concerning the school of arts, \$300,000 had been promised by the Liberal candidate prior to the recent Federal election. This needs to be followed up.

Berry has many buildings with significant heritage value RMS has issued a document on the Berry to Bomaderry highway upgrade. Community members have until 29 November two submit their comments. RMS is also discussing a third bridge crossing over the Shoalhaven River and consultation on this process will take part in the next six weeks

- Based on the earlier discussion, priorities for improvement were indicated by a show of hands;
- Kangaroo Valley road and footpath: 7; needs to be considered in conjunction with the highway realignment
- Coolangatta Road 5
- Woodhill mountain road 3
- Albert Street/Alexander Street 3
- Agars Lane 3
- Strong support was expressed for the rotary circuit
- Support was expressed for preparing a master plan as a single voice of the Berry community comment; to be discussed at the December city to CCB meeting



## **FOR ALL YOUR POND AND DAM CARE NEEDS**

Specialist in:

- Algae and weed removal incl. azolla, duckweed, salvinia
- Pond & dam renovation
- Pump & filtration systems
- Fish & aquatic plants

Using:

- Targeted, non-residual sprays that are safe for animals & aquatic life
- Tried & tested methods
- Follow-up and maintenance

**Rob Packer Pond & Dam Care 0409 550 741**



**Albert  
Street  
Berry**



## **Berry Uniting Church**

**Phone: 4464 1034**

Email: [minister@berry.unitingchurch.org.au](mailto:minister@berry.unitingchurch.org.au)

**Sunday Celebrations:** 9.30am  
Rev. Dr. David Millkan

### **Groups & activities:**

Bible study groups  
Community Garden  
Fellowship groups  
Prayer groups  
Men's Shed  
Social Craft Group  
Young People's Drama Club  
Computers for Seniors

*"To know Christ & make him known"*

<http://berry.unitingchurch.org.au>

### LOOK GOOD, FEEL BETTER - THE CUP

Sixty happy 'race goers' attended the Zonta cup day at The Pavilion and money raised will support the great work done by Look Good, Feel Better. Thanks to all who attended and to the staff for their hard work. Congratulations to all winners of lucky door prizes, raffles and sweeps!

### ZONTA AWARDS FOR 2014

Our Zonta Club, Zonta District and Zonta International all give awards, in the form of financial scholarships, to assist women and girls with study.

Zonta Berry is looking for candidates for the following awards. If you are interested, please contact Helen Buchanan on 0427235369 or hb19899@gmail.com

You can also visit [www.zonta.org](http://www.zonta.org) or [www.zontadistrict24.org](http://www.zontadistrict24.org)

#### 1. Young Women in Public Affairs (YWPA) Award Program-Club Closing Date 1 March 2014

This program recognises young women for their demonstrated leadership skills and commitment to public service and civic causes, and encourages them to continue their participation in public and political life. Whilst the progress of women in the last century has dramatically increased opportunities, their participation in positions of public influence continues to lag behind.

Eligibility- Women 16-19 as at April 1st each year showing:

- Active commitment to volunteerism
- Experience in local or student government
- Volunteer leadership achievements
- Knowledge of Zonta programs and advocate of Zonta's mission.

#### 2. Jane M. Klausman Women in Business Scholarship-Club Closing Date 1 June 2014

Established in 1998 from a generous bequest by Ms Klausman, a Zontian from New York, this scholarship is awarded annually. It helps women pursue undergraduate and master's degrees in Business Management and overcome gender barriers from the classroom to the boardroom. Eligibility- a woman studying a business or business related degree and demonstrating outstanding potential. Online students are also eligible. Applications will be available in January from Helen (see above contacts).

In addition to these awards we are planning to introduce support through TAFE in 2014.

Members will also be busy during December attending Speech Days at local high schools where we recognise outstanding students.

### DECEMBER BREAK

We will be taking our usual break in December, with no dinner meeting. We will return, fully charged, for the January meeting on Tuesday 28th. All members of Zonta Berry would like to thank those who supported us in many ways throughout the year. We sincerely wish everyone a happy and safe Christmas and a New Year packed with good things.

Dinner Meetings are held on the fourth Tuesday of the month at Gabby's, Berry, 6.30 for 7.

Please call Mary Seelis on 44641191 to book.

**PR and Communications**  
**Check us out on Facebook**



*Happy punters at The Pavilion for Look Good, Feel Better*



presents *Broughton  
on the Ridge*  
*Restaurant, function and reception centre*

## NOW TAKING BOOKINGS

Friday and Saturday Nights

Open for lunch Friday Saturday and Sunday

Broughton on the Ridge is a purpose built venue designed to cater for any event.

Large veranda with majestic views to Coolangatta, Berry, Saddleback and Cambewarra, Mountains making for the perfect spot to enjoy your lunch or dinner while watching the sun go down.

A fully licensed bar with our own hand crafted beer on tap

**For bookings phone 4448 5825**



**ST. LUKE'S**  
ANGLICAN CHURCH



Transformers Youth Group has two events planned for December to which young people are invited (details below).

Transformers is a Christian run youth group for Years 7-10 at High School. In Term 4, Year 6 youth are invited to come along. We meet on Friday nights during school term.

The group is run by a dedicated team that includes faithful leaders from Berry Presbyterian and

St. Luke's Anglican churches, teacher aids from Bomaderry High School, the minister of the church Rev Neil Percival, and Grant Abbott the full time scripture Teacher at Bomaderry High School and the part time youth worker at St. Luke's

The name "Transformers" was chosen to reflect the main goal of the group. "Do not conform to the pattern of this world, but be transformed by the renewing of your mind" Romans 12:2a

The aim of the group is to encourage the youth to consider thinking God's way as revealed in the Bible. This is done through a short devotion each week.

Youth are invited to join Transformers for our last two activities of the term.

### 6th December- Tennis

We will meet 6:30pm at St Luke's Anglican Church Hall, Berry. Pick up at 8:30pm.

BYO tennis racquet & wear comfy shoes (Tennis racquets will be provided for those who don't have one). Cost \$3

### 13th December Mega Christmas Party

Fabulous Christmas dinner, mystery guests, fantastic fun and adventure! We will meet at St Luke's Anglican Church hall at 6pm. Pick up at 8pm Cost \$3

As well as youth activities there are children's activities in the school holidays

### Holiday Club @ St Luke's

Wednesday 15th January to Friday 17th January for Years 3-6.

Cost \$5 per day which includes craft, games, morning tea and Bible stories.

Starts at 9 am and finishes at 12 noon sharp.

For more information please contact Grant Abbott on 0447 667 389 or goabbott@bigpond.com

## David Berry Hospital Auxiliary

Again there is very little to report this month.

We would like to thank everyone who were so helpful setting up and dismantling the last book sale, as well thanking all those who over the last 17 years were there to give us a helping hand, putting books out and the cleaning up after the sale.

A very special thank you to Jenny Swan, who did so much to improve the format to making the handling of sorting, packing and transporting the many books that we had to handle before the yearly sale.

For many months during the year a band of volunteer helpers sorted packed, put into categories and stored the many thousands of donated books. You all know who you are and we could never have done without your help.

A special thank you to:  
Sheilagh, Margaret, Trish, Mary, Laureen, Cathryn, Pam, for your constant help in sorting books week after week, sometimes out in the hot sun and in all weathers.

A very big thank you to the David berry hospital for storing the books in the back shed.

Our Xmas party will be held under the Jacaranda tree at the David Berry hospital on December the 9th for members only.

We will be returning to our monthly meetings again on February 10th, 2014 and we are still looking for new members

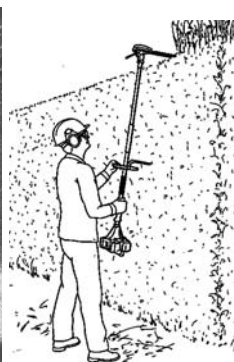
Any inquiries you can contact our President: Maggie Froggatt on 4421 8115



# HATHAWAY HEDGES

LANDSCAPE MAINTENANCE

- ALL SIZE LAWNS
- ALL SIZE GARDENS
- ALL SIZE HEDGES
- PLANT SALES
- ADVICE
- QUALIFIED HORTICULTURIST
- OVER 20 YEARS EXPERIENCE



Based in Broughton Village we service Berry and Surrounding Areas

**Call Lawrie Hathaway**  
**0411 888 333 A/H: 42 342 900**

ADVERTISEMENT

# Gareth Ward MP

Member for Kiama



*"On Tuesday 8<sup>th</sup> October between 3pm and 4pm, I will be outside the Berry Pharmacy at 113 Queen Street, Berry. Please do drop by and say g'day."*

Contact Gareth: P 4232 1082 | F 4232 3577

E [kiama@parliament.nsw.gov.au](mailto:kiama@parliament.nsw.gov.au)

W [www.garethward.net.au](http://www.garethward.net.au)

Authorised by Gareth Ward MP, 102 Terralong Street, Kiama NSW 2533. This advertisement was produced using parliamentary entitlements.



# Berry Veterinary Clinic

A: 84 Queen St Berry P: 4464 1899

W: [www.berryvet.com.au](http://www.berryvet.com.au) E: [info@berryvet.com.au](mailto:info@berryvet.com.au)



*"HERE FOR YOUR BEST FRIEND"*

Monday - Friday:  
8 - 6pm

Saturday:  
9 - 12 noon

**Sunday:**  
**10-12noon**  
**@ Shoalhaven Heads**

## FULL RANGE OF SMALL & LARGE ANIMAL SERVICES INCLUDING

- Xray
- Ultrasound
- Endoscopy
- Orthopaedic and Soft Tissue Surgery
- Dentistry
- Preventative Healthcare & Advice
- Puppy pre-school
- Grooming & style cuts + \$15 Baths
- Clinic in Kangaroo Valley
- Clinic in Shoalhaven Heads

## NEW OPENING HOURS !!!!!

The clinic will now open between the hours of 8am and 6pm weekdays and 9am - 12noon on Saturdays, for consultation by appointment.

We are also available for consultation at our Shoalhaven Heads clinic on Sundays between the hours of 10am and 12noon.

**Come and meet our growing team of 5 vets and 5 vet nurses:**  
Dr Anthony Bennett - vet, Dr James Carroll - vet, Dr Bryden Krebbs - vet,  
Dr David Ball - vet and Dr Geoff Manning. Trish Rosa - vet nurse,  
Kahlia Bugden - vet nurse, Emma Walsh - vet nurse,  
Amy Howes - vet nurse and Molly Barrett - vet nurse.

## BERRY MASONIC VILLAGE AUXILIARY

Well as we approach the end of another successful year with our last Street Stall on FRIDAY 22ND NOVEMBER we look forward to our Christmas parties/lunches where the Auxiliary member, Kiosk girls meet at the Berry Pub on Wednesday 18th from 11.30 after our monthly meeting at 9.30 in the Hall with morning tea before heading down. Do come if you have been away lately.

We have had a great year hopefully helping our Residents stay in the Village with a few more activities like a Chinese meal brought in, Mother's and Father's Day out for lunch and all the lovely Musical entertainment during the year with Feather Friends, and what great Craft group items they have been making and donated.

Our great KIOSK in the foyer of the Village is open 3 days a week which gives the Residents independence to shop for their little treats of chocolates, biscuits, toiletries and have a good chatter. If you have a spare 2 hours you would like to give to us in helping in the KIOSK please ring our President Irene 44 642 612 for a chat.

We're taking this opportunity to say Thank You to you all for your great support during this past year. We have worked hard to give more comfort to our residence, of which many do not have visitors as they are out of their home areas, but with your support once again you will see, when Santa arrives in December, much joy on all their faces. THANK YOU

## B E R R Y ETHICS SOCIETY

Berry Ethics  
just think about it

Great to be able to report that the first Berry Ethics meeting was held last month. We now have a core group of members who enjoy coming together once a month to discuss and debate topical issues.

We will be holding our next meeting of the Berry Ethics Society on Monday, 2th December at 7pm at the Berry Pub (The Coach House). The idea is to get together on a monthly basis to discuss/debate a thought-provoking issue. This month will be on the topic of Coal Seam Gas (CSG).

CSG is clearly a controversial area, with industry versus land-owners and conservationists campaigning aggressively against each other. Who's right? The arguments for and against CSG are so diametrically opposed; so how can you arrive at an informed position? And what's happening around Berry when it comes to CSG?

We've all heard about CSG, and it's clearly a highly valuable resource, but what's involved with extracting CSG? What is "fracking" and what are the risks from chemicals used in fracking. What are the risks to the local water table from CSG?

Here's a couple of interesting videos on CSG on both sides to get you thinking:

<http://www.youtube.com/watch?v=78TxoYOREAQ;>

<http://www.youtube.com/watch?v=ayhPNCUoQ7I;>

<http://www.youtube.com/watch?v=1sLlpyAjqXo;>

[http://www.youtube.com/watch?v=ll6qtHMEtJk.](http://www.youtube.com/watch?v=ll6qtHMEtJk)

If you are interested in attending, please drop a note to [berry.ethics@gmail.com](mailto:berry.ethics@gmail.com), or just come along on the night and join us for a drink and a think!

We're still looking for additional ethics teachers who are prepared to give up an hour each Wednesday morning to lead an ethics class for students at Berry Public in 2014. Have a look at the following video to learn what it's all about: <http://aca.ninemsn.com.au/article/8748750/school-of-thought-for-ethics>

If you are interested, check out the following link ([www.primaryethics.com.au](http://www.primaryethics.com.au)) and register on the website or call me on the number below. You don't have to be a parent to teach Ethics.

Finally, I thought that you would enjoy the attached photo of my daughter (Aisha) meeting the Dalai Lama back in June. She was selected from the NSW Primary Ethics student body to attend the Young Minds 2013 forum, exploring the importance of secular ethics. It was a wonderful experience for her, and such vicarious pleasure for me!

Christopher May (Ethics Coordinator)



Aisha May from Berry Public with the Dalai Lama

# bombo

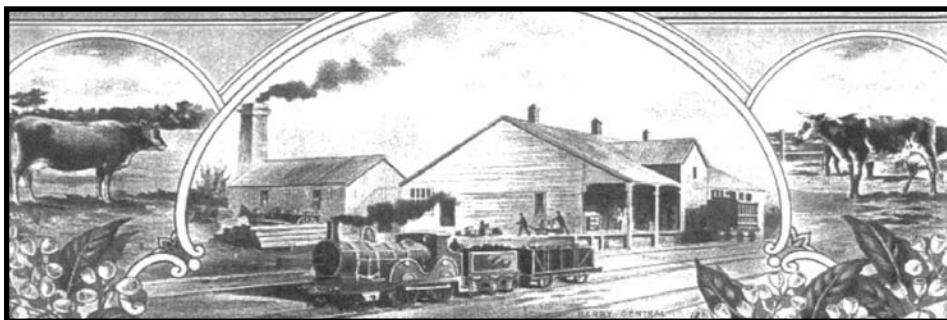
blinds | curtains | shutters | awnings



## 4237 8280 [www.bombo.com.au](http://www.bombo.com.au)

Visit our beautiful showroom at **7 Johnson Street, Kiama Downs** (near the IGA)

WE CARRY THE FABULOUS "BLINDS BY PETER MEYER" RANGE • ALL PRODUCTS COMPLY TO CORD SAFETY LAWS



# OLDCREAMERY LANE COMPLEX

ESTABLISHED 1895  
OLD CREAMERY LANE • BERRY



We stock a comprehensive range of Gardening Products, Hardware, Agricultural Products, Stockfeed's, Hard Yakka Clothing, Rossi & Baxter Boots, Wet Weather Gear and Electrical Fence Equipment.

## IN STORE PRODUCTS

Wild Bird Mix 20Kg  
Pool Chlorine Liquid 20Lt  
Layer Pellets 20Kg  
Sulphate of Ammonia 25kg  
Gypsum 25kg  
Pool Salt 25kg  
Pool Chlorine Granular 4kg  
Snail Pellets 1kg  
Coprice working dog 20kg  
Shavings Pine 18kg  
Parrot Mix 20kg  
Potting Mix 30litre  
Sugarcane Mulch 240L  
Mushroom Compost 30litre  
Pure & Healthy Honey 250g, 500g, 1kg  
Straw hats  
Sudden Impact Rose 10kg  
Sudden Impact Lawn 10kg  
Assorted Coloured TUBS 40L  
Now stocking Green Line poly pipe and fittings plus blue line pressure pipe and fittings

**OPEN: MON-FRI**  
8.00AM-5.00PM  
**AND SAT 8.00AM-NOON**  
**OLD CREAMERY LANE, BERRY**  
**PHONE 4464 1209**



## Distributors of Macquarie Valley juices

# SAVE \$\$

## Berry Rural Co-op Self Storage

ALL GARAGE SIZES

Phone us last for  
the best price

# 4464 1209

Old Creamery Lane Berry



Berry Rural  
**STORES**  
NEW WEEKLY SPECIAL  
*Call in and see  
what the special is.*



[www.southcoastdairy.com.au](http://www.southcoastdairy.com.au)

## The Treat Factory

60 years of a Family tradition



MANY PRODUCTS MADE RIGHT HERE ON PREMISES

- Gift Box chocolates, rocky road, marshmallow
- Honey, preserved fruits in liquor
- Over 50 varieties of jam preserves, chutneys, pickles, vinegars and sauces.

**OPEN 7 DAYS**

OLD CREAMERY LANE - PHONE 4464 1112

## Berry Automotive Repairs

Phone: 4464 3999  
Mobile: 0417 251 205  
2c Old Creamery Lane Berry

**CARS - 4WDS - TRUCKS**

- Late Model & Fuel Injected Vehicles
- Brakes, Steering and Suspension
- Servicing, Repairs & Registration Inspections

[www.wroughtirongates.net.au](http://www.wroughtirongates.net.au)



BUSINESS  
FOR SALE



**THE VILLAGE FORGE**

PHONE FAX 02 4464 3333 MOBILE 0402 418 888  
WEB [www.villageforge.com.au](http://www.villageforge.com.au) EMAIL [info@villageforge.com.au](mailto:info@villageforge.com.au)

**Keep it  
local!**  
buy South  
Coast Milk

## Canine Cardio

Dog Walking & Animal Home Care

Dog Walking | Pet Minding | Doggy Daycare | Overnight Stays

Annette Brooker

0418 427 438

info@caninecardio-homecare.com.au  
www.caninecardio-homecare.com.au



## Television Antennas SHOALHAVEN ANTENNAS

Servicing Berry and surrounding areas.

- Digital Upgrades
- New Installs
- TV Tuning
- Repair existing systems
- Add Phone/TV Outlets



Phone: 0410 526 672

Fax: 02 4422 6672

## berry physiotherapy

dr chambers' practice  
alexandra st, berry

belinda henry  
mark burns

branch practice of  
gerringong physiotherapy

ph 4234 4666



Mountain Echo Landscape & Horticulture

- Landscape Design & Construction
- All Aspects of Garden Maintenance
- Fruit & Veg Production
- Broad Acre Property Management

Katie 0424 236 235 Ryan 0409 743 828  
contact@mountainecho.com.au

Mark Collins

## Lawn Mowing Service

Domestic & Commercial

M: 0401 571 228

Fully Insured  
ABN: 88 646 587 820

P: 4423 6448 e:markneidi@optusnet.com.au



Berry  
Chiropractic

~ Specialising in gentle,  
low force techniques ~

SAFE, EFFECTIVE TREATMENT FOR:

- All ages; from babies through to the elderly.
- Headaches/migraines
- Back/neck pain
- Postural problems
- Whiplash
- Scoliosis

EFTPOS available

HICAPS now available

Phone: 4464 3414

Arborist

Complete Tree Removal & Care

Reliable Professional Service

Mulch Sales

Stump Grinding

Fully Insured

Dave Kelly

0423 903 946

All aspects of professional tree care.



## Ian's Interior Linings



- ★ All plasterboard & fibrous plastering

- ★ Commercial & Domestic

M: 0418 220 751

E: willey63@bigpond.com.au

## Country Quilts, Curtains & Blinds

Shop 4, Berry Stores, 97 Queen St Berry

(entrance in Alexandra Street)

All window fashions and soft furnishings

Drapes, Pelmet, Tracks and Rods

Blinds: Timber, Roller, Roman

Free measure and quote

Open Wed to Saturday 10am-3pm

Mob: 0414 983 757

## THE BOUTIQUE GYM

Personal Trainer Jen Miller

117 North Street,  
Berry NSW 2535

☎ 0413 648 943

jennmiller65@hotmail.com



## Qualified Gardener



- Pruning
- Weeding
- General Maintenance

Phone Sidney

0420 245 143

## Four Legged Friends PET FEEDING SERVICE

For Horses, Dogs, Cats, Birds  
& all other domestic pets

Megan White

dip in animal care

Ph. 4464 2472 / 0407 407 328

info@fourleggedfriends.com.au

Established: 1995

• FEEDING • EXERCISING • RUGGING •  
GARDEN • MAIL • GARBAGE

www.fourleggedfriends.com.au



## Gerringong Garden Maintenance



Mob: 0431 342 382

Ph 4234 2383

For all of your gardening and lawn needs.

## HAMILTON EARTHMOVERS

Excavator

Bobcat

12 Tonne Tipper

Cut & Fill

Footings

Auger Drills

Rock Grabs

Rubbish Removal

Road Bases



Ph: 4464 1531

Wayne

0424 399 094

# SNB

scott@snbuilders.com

S.N.BICKERSTAFF

MASTER BUILDERS

LIC 35214

New Homes, Extensions

Renovations and

Alterations

www.snbuilders.com

ph 44 642 046

mb 0419 614 146

# TRADES & SERVICES *Directory*



**MICHAEL HILL**  
**PAINTER & DECORATOR**  
Quality Work Guaranteed

Domestic Commercial Industrial

ABN 95 969 204 488 Lic No 121389C

**0402474569**

Specialising In

- New/Old work
- Feature Walls
- Roofs
- Texture Coating
- Heritage



**MORROW**  
BUILDING SERVICES  
tomorrows future, built today

Building in Berry and surrounding areas  
Architecturally designed new homes  
Extensions & Alterations, Renovations,  
Bathrooms, Pergolas & Decks

Paul Morrow 0413 887 042  
Email: morrowbuilding@hotmail.com  
Lic: 141931c

**Total Gate Solutions**  
For all your Gate Automation needs

- Installation & Service of Gate Automation
- Solar & 240V
- Farm, Domestic & Commercial
- Wireless Intercom Installation

Phone Lee  
**0409 322 491**



**OPC**  
CONSTRUCTIONS  
quality building, extensions & renovations

new homes  
extensions  
first floor additions  
renovations  
architectural & detailed joinery  
decks & pergolas  
retaining walls  
truck & bobcat hire

BERRY  
0414 502 513  
ao.carter@bigpond.com  
lic.no. 119313C



**BERRY**  
**REMOVALS**

LOCAL • COUNTRY • INTERSTATE  
Experience a New Level of Professionalism  
Phone 04 2864 3557 or 4464 3557



**B&B**  
LANDSCAPES  
BORG BARTER

CONSULT DESIGN CONSTRUCT MAINTAIN

GERRINGONG SLADE BARTER 0402 255 115  
SHOALHAVEN HEADS MATT BORG 0409 735 484

**N Hartman Bookkeeping**

- Payroll
- Creditors
- Debtors
- BAS & IAS
- Finance Reports
- Computerised or manual
- Reasonable rates

Nerida: 0427 488 447  
e: nhartman@shoal.net.au

**Handyman**  
HONEST - RELIABLE - INSURED

Specialising in: Painting, Plastering.  
Home Maintenance, Pressure  
Cleaning, Flyscreen Replacement  
Selling or renovating your home?  
Good Advice & Free Quotes

CALL COL WHITEHURST  
0400 135 128



**hand made web.**

Local design service

- Websites & online stores
- Search engine optimisation
- Facebook pages & email newsletters
- Logos, stationery & packaging
- Brochures, ads & posters

Check out our portfolio online  
www.handmadeweb.com.au  
0447 674 919

**TERMITES!**

- ▼ Pre purchase termite inspections and reports
- ▼ Termite barriers new & existing buildings, council approved
- ▼ Thermal imaging and microwave inspection tools
- ▼ Termite Baiting Systems

FREE QUOTES Call  
**TERMITE SOLUTIONS-**  
**4448 5444**  
termite experts

Fully Licensed, Accredited & Insured  
Family Business with over 20 years experience

**SPACE**  
**AVAILABLE**  
CONTACT THE EDITOR  
**0428 037 572**  
towncrier@berryalliance.org.au



**MISS SPARKLES**  
**SHOALHAVEN**  
External House Cleaning  
HOUSES FROM \$148

- ★ Environmentally Friendly
- ★ House/Driveway Packages
- ★ Removal of Cobwebs
- ★ Patios and Driveways
- ★ Mildew Treatment
- ★ Windows/Screens included
- ★ Commercial work
- ★ Seniors Discount

Phone Dennis for a free quote:  
**0407 642 256**  
Now Offering: Internal Window Cleaning &  
Licensed/Insured Electrical Work (Lic No. 209514C)

**Vaughn's Lawn & Garden Service**



- ✓ Local knowledge
- ✓ Professional service
- ✓ Fully insured

**0408 863 776**  
www.vaughnsgardening.com.au

**ELECTRICAL**  
CONTRACTOR

**DOMESTIC & COMMERCIAL**  
Solar Power Installation  
Home Automation Systems  
Security Lighting  
Pools & Spas  
Hot Water Systems  
Oven & Stove Repairs  
Safety Switches  
Smoke Detectors

Contact peter today!  
0412 594 907 | 4464 1993



ENDEAVOUR ENERGY AUTHORISED LEVEL 2 SERVICE PROVIDER

**FLOOR**  
**SANDING**

*Coolangatta*  
*Floor Sanding*

SPECIALISING IN OLD & NEW FLOORS  
FREE MEASURE AND QUOTE  
PHONE GLEN **4448 7932**  
www.coolfloors.com.au

# TRADES & SERVICES *Directory*



All Earthworks  
Landscaping  
Driveways  
Rural Roads



Charlie 0418 429 740  
charlie@ckbcivil.com.au

Lic 244729c

**SPACE  
AVAILABLE**  
CONTACT THE EDITOR  
**0428 037 572**  
towncrier@berryalliance.org.au

## DOOR & WINDOW ROLLER & WHEEL REPLACEMENT

Repairs to Doors, Windows, Wardrobes,  
Shower Screens and Flyscreens.

We also supply and fit Flyscreens,  
Security Doors and Window Grilles.

**0411 555 182 or 4446 4753**



**theRollerDoctor™**

## EXPERIENCED BOOKKEEPER

ARE YOUR BOOKS IN A MESS?

**DON'T STRESS!**

SPECIALISING IN MYOB  
OPERATING SYSTEMS, INCLUDING BAS,  
PAYROLL AND SUPERANNUATION SUPPORT.  
CALL YVETTE ON 0403 155 504

**I CAN HELP!**

BAS & Payroll qualified FNSBKG404A/405A 2011



**Maintenance, Repair & Renovation Specialist**

"I can help with those odd little jobs that  
never seem to get fixed or a bigger project  
like a new kitchen or bathroom"

Lic # 218008C

For a friendly free quote - Glynn 0423 384 072

## BELLETTTE ELECTRICAL & AIR CONDITIONING

All Electrical work

Reverse Cycle Split & Ducted

Air Conditioning

Sales Service Installation

**Alex Bellette 0421830261**

Lic No 209618C



design | build | restore  
craftsmen in all aspects of traditional  
& contemporary stone work

Visit our website for a range  
of Natural Stone Solutions

[www.stonehedge-masonry.com.au](http://www.stonehedge-masonry.com.au)

50 LIDBETTER RD BERRY NSW 2535

BRETT HOFMAN: 0402 406 192



## Southern Tree Service

- Qualified Arborist
- Qualified Horticulturist
- Tree care and maintenance
- Expert trimming and tree removal in confined areas
- Chipper • Mulch
- Advice on replacements
- Stump Grinding
- Fully Insured

**Paul Gillen**

**Ph/Fax 4464 2822 • Mobile 0407 405 968**

remedial & relaxing massage,  
oncology massage,  
naturopathic advice,  
auro-soma colour,  
living energy treatment;  
for body and soul!



lauren cunio **4464 1060**  
[www.berrymountain.com.au](http://www.berrymountain.com.au)

## LOOK MOBILE MECHANIC LOOK AND MACHINERY TRANSPORT

- LAWN MOWERS
- TRACTORS & MACHINERY
- LIGHT TRUCKS
- 4WD & UTES

**0414 800 359**

GREG LYNCH MOBILE FARM SERVICE

Ian Stralow

Blackwood Kitchens & Joinery  
Cnr Angus Ave & Flinders Lane, South Nowra, NSW, 2541



p: 02 4423 1113 f: 02 4423 0688

e: [blackwood@southernphone.com.au](mailto:blackwood@southernphone.com.au)  
[www.blackwoodkitchens.com.au](http://www.blackwoodkitchens.com.au)



## HATHAWAY HEDGES

LANDSCAPE MAINTENANCE

- ALL SIZE LAWNS
- ALL SIZE GARDENS
- ALL SIZE HEDGES
- PLANT SALES
- ADVICE
- QUALIFIED HORTICULTURIST
- OVER 20 YEARS EXPERIENCE



Based in Broughton Village we service Berry and Surrounding Areas

Call Lawrie Hathaway

**0411 888 333 A/H: 42 342 900**



Specializing in Private Road Construction  
& Bitumen Seal.

- Driveways
- Carparks
- Decorative driveways
- Fully Insured

Contact Office (02) 44 641 555

John 0408 160 428

HERE IS HOW TO GET THE BEST KITCHEN,  
VANITY, FURNITURE, TIMBER WINDOWS,  
DOORS, FLYSCREENS AND JOINERY

## Rybrook Joinery

CALL SCOTT OR MICHAEL

**4422 4600**



## Computer Troubleshooters™

TECHNOLOGY SOLVED

- . Residential or Business we come to you.
- . Hardware and software repairs and sales.
- . Networking solutions.
- . Over 20 years' experience.

**4480 6028**

[www.ctsnowra.com.au](http://www.ctsnowra.com.au)

LOCAL SERVICE – GLOBAL STRENGTH





# THE BERRY HOTEL

120 QUEEN STREET

BERRY 4464 1011 - Fax 4464 2142

RESPONSIBLE SERVICE OF ALCOHOL AND GAMBLING



BEER TO DRINK  
MEMBER IS FULL OF CHRISTMAS JOY  
HERE AT THE BERRY HOTEL, THERE'S LOTS OF CHRISTMAS FUN TO SHAKE! WE HAVE  
FAB DINING SPECIALS  
DELICIOUS

Berry Merry Christmas Dining Special: \$16.50 MENU.  
Buy 1 x Adult Meal = 1 x Child's Meal FREE.  
\*\*\*\*

FRIDAY HAM RAFFLE with proceeds supporting Mission Australia's GRANDPARENTS PROGRAM.  
One HAM drawn every 50 tickets sold.  
\*\*\*\*

Every Wednesday Night is James Squire PARMY & PINT NIGHT.  
Enjoy your favourite pint of James Squire Ale or Cider along with our house-made Parmigiana. \$20 per serve.  
\*\*\*\*

DON'T FORGET our Superdelicious FREE Dessert Deal!  
Download our FREE App for your smartphone - unlock coupons!  
Every time you purchase a main meal, scan the QR code at the counter.  
Receive a FREE dessert with your 5th coupon!  
Conditions Apply.

## LIVE MUSIC

FRIDAYS SATURDAYS DECEMBER

## WEEKENDS

### NO COVER CHARGE

7th Woody  
14th J Walkers  
21st Ab Fab  
26th DJ Nana Blade  
28th Rhythym in Motion  
Karaoke FRIDAYS



Management and Staff  
Wish You a  
MERRY CHRISTMAS.  
Stay Safe and  
Have a Spectacular  
NEW YEAR!

SUMMER DINING at THE BERRY HOTEL  
LUNCH: from 11.30am daily  
DINNER: from 6pm nightly  
BREAKFAST: from 8am Sunday

RESTAURANT - FUNCTIONS  
- WINE TOURS -  
ACCOMMODATION



it can only  
happen here

Website: [www.berryhotel.com.au](http://www.berryhotel.com.au) - Email: [info@berryhotel.com.au](mailto:info@berryhotel.com.au)

Off-street parking for patrons at the rear of the hotel.