

AUGUST 2014

\$3.00

# Town Crier

PO BOX 202 BERRY NSW 2535

[www.berryalliance.org.au](http://www.berryalliance.org.au)



*Berry Public School invites you to spend an evening celebrating incredible local produce, culinary talent and community at its only evening fundraising event for 2014...*

Enjoy welcome drinks and canapés from the talented *Jo Jorgensen of Garnish Creative Catering*.

Followed by communal platters of delicious mains derived from locally sourced produce and created by celebrated local *Chef David Campbell of Hungry Duck and Wharf Road Restaurants*.

And to finish, *David Campbell's* famous Gutter Sundaes!

All complimented by carefully selected regional wines, mocktails and beer on tap from the *Berry Hotel* available for purchase.

[berryllocavoreevening@gmail.com](mailto:berryllocavoreevening@gmail.com)

Friday 5th of September  
at the Berry School of Arts  
7pm for a 7.30pm start

Musical entertainment provided by the ever popular *DJ Nana Blade*.

Our infamous Silent Auction and Diamond Earring Raffle returns with our Big Raffle to be drawn on the night.

Tickets are \$60pp & available now from Bedroom Bliss, BERRY 4464 3336.  
Book a table or individual seats.

## Coming to Berry

*Annual Camellia and Floral Show*  
PAGE 3

*Parenting Digital Natives at Berry Community Church*  
PAGE 7

*Broughton Rural Fire Service are having an Open Day*  
PAGE 7

*Small Farm Field Days - 5/6 September*  
PAGE 12



## Inside this Edition

Review of Speed Zones on Coolangatta Road ..... Page 4  
The Red Cross celebrates its centenary ..... Page 5  
Ideas to help reduce plastic use ..... Page 9 & 24  
Update from Berry Preschool's Winter Wonderland ..... Page 28



## The Town Crier Information

The Town Crier is produced by the Berry Alliance, Inc.

The purpose of this publication is to communicate to the people of Berry about community activities and to generate a small income for the Berry Alliance to cover administrative costs.

### MEMBERSHIP

Membership of the Berry Alliance costs \$10 pa. It aims to share information amongst community groups and individuals, and to ensure that Berry continues to be a community we are proud of.

Membership is open to Berry community groups and individuals.

To join the Berry Alliance, write to PO Box 202, Berry NSW 2535

### CONTACT DETAILS:

#### ALL TOWN CRIER ENQUIRIES:

0428 037 572

[towncrier@berryalliance.org.au](mailto:towncrier@berryalliance.org.au)

#### ALL BERRY ALLIANCE ENQUIRIES:

Secretary: 0449 569 059

Email: [info@berryalliance.org.au](mailto:info@berryalliance.org.au)

Post Office Box 202, Berry NSW 2535

### TOWN CRIER EDITORIAL BOARD

Rick Gainford  
Sharon Dunn

Jennifer Clapham  
Nancy Davies

Contributors are those from the Berry community who have news or views relating to residents of the area. The opinions expressed in the Town Crier are not necessarily those of the Berry Alliance or the Editor. The Town Crier is published every month, with a circulation of 2300.

PRINTED BY *Berry Printers*

CONCORDE WAY BOMADERRY PH: 4421 0569

PRINTED ON RECYCLED PAPER



NSW RURAL FIRE SERVICE



## MEDIA RELEASE

### Public consultation on new vegetation clearing laws

1 July 2014

People living in bush fire prone areas are encouraged to have their say on new vegetation clearing laws, designed to make homes safer during bush fire season.

The NSW Rural Fire Service (NSW RFS) is inviting public feedback on a draft Code of Practice for the new 10/50 vegetation clearing laws that will soon come into effect.

NSW RFS Commissioner Shane Fitzsimmons said the laws are designed to make it easier for people in designated areas to improve the safety of their homes.

"The new laws allow people to clear trees within ten metres of their home, and thin vegetation other than trees within 50 metres of their home," Commissioner Fitzsimmons said.

"It's important that when these laws come into effect in the near future that people in designated clearing areas understand their obligations.

"The Code of Practice outlines these responsibilities and now is the opportunity for all of the community to have a say on the Code."

The draft Code of Practice is available on the NSW RFS website at [www.rfs.nsw.gov.au](http://www.rfs.nsw.gov.au).

Once the law comes into effect, the NSW RFS will have an online tool available on its website where people can check if they're in a designated 10/50 vegetation clearing area.

The tool will also let people check if there are any restrictions such as locations of cultural significance or due to the slope of their property.

The consultation period closes 21 July.

It is important that people remember that while the laws are expected to be in place before the coming bush fire season, they are not yet in force.

Until the laws are formalised, following the consultation period, existing rules and penalties apply.

For more information contact the State Duty Media Officer on 9898 1855

For current incidents or major fire updates visit [www.rfs.nsw.gov.au](http://www.rfs.nsw.gov.au)

### DID YOU KNOW?

# HARCOURTS SELLS \$2.5 MILLION OF PROPERTY EVERY HOUR OF EVERY DAY\*.

\* Based on Harcourts International figures from 2013. Figures in New Zealand dollars.

When it comes to selling property, Harcourts understand how to market your property to get the best results. For global exposure, national strength, and local knowledge, talk to Harcourts.

### FOR MORE INFORMATION CONTACT:

GRAEME SMITH // HARCOURTS KANGAROO VALLEY

PH 02 4465 1996 // [KANGAROOVALLEY@HARCOURTS.COM.AU](mailto:KANGAROOVALLEY@HARCOURTS.COM.AU) // [WWW.KANGAROOVALLEY.HARCOURTS.COM.AU](http://WWW.KANGAROOVALLEY.HARCOURTS.COM.AU)



Opposite is a Media Release from the RFS, dated 1st July 2014. The Berry Alliance has since submitted a request (below) that this consultation deadline be extended from 21st July to 14th August to allow the community time to be informed of the issue and to submit feedback.

### **Berry Alliance's response to the RFS Media Release.**

#### **Re: Consultation on new vegetation clearing laws**

The Berry Alliance publicises a monthly community paper (2,300 copies delivered into the home for free). We are also the Community Consultative Body for Berry and publicise requests such as yours when we feel they are appropriate.

We consider the issue to be an important one and wish to publicise the issue but note the media release is dated 1-7-2014 and the closing date for submissions is 21-7-2014.

Our next edition is distributed at the end of July so it is after the close off date.

Would you please extend the consultation period to 14-8-2014.

We will publicise both your press release and this request in the August Berry Town Crier with the hope that the views of those members of our community who make a submission before 14-8-2014 will be considered.

Regards,  
Rick Gainford  
President  
Berry Alliance Inc.

## **Berry & District Garden Club News**



**AUGUST 2014 - JENNIFER MORS**

There is always quite a hum in the air around this time of year in Berry. With the Camellia and Floral Show over, Club volunteers and owners of the eight gardens featured in the upcoming Berry Gardens Festival are busy preparing for this exciting event. However, before getting on with Festival details, the Garden Club would like to put in a special thank you to the ladies of the David Berry Hospital Auxiliary for doing such a marvellous job of the catering each year at The Camellia and Floral Show. Their efforts are certainly appreciated.

The Berry Gardens Festival runs from Thursday 11 to Sunday 14 September, a month earlier than usual to reflect the timing of the first Festival 25 years ago, and we are delighted to have three of the original gardens in the 2014 program. We will also be celebrating with an extra dash of Festival pizzazz in town. From the end of August, lime green, garden green and black & white checked bunting will adorn the awnings of the shops along the main street of Berry to bring the festivities right into the heart of town.

The Festival offers inspiration for garden lovers and a great opportunity for locals and visitors to enjoy the beauty of some much-loved gardens. Look out for signage around the district, programs are available from various shops in Berry and information is on our website at [www.berrygardenclub.org.au](http://www.berrygardenclub.org.au).

As well as the town buzzing with Festival fun, the Garden Club's website will also be buzzing. While the web address stays the same, the design and function are new. Due to be launched in August, we are sure our regular users, as well as visitors to the site, will be impressed. Of course, a website is always a work-in-progress, rather like a garden, so there will always be adjustments and some pruning around the edges to get it just right. As gardens develop over time with commitment and patience – so do websites.

The next meeting of the Garden Club will be held on Tuesday 19 August at St Luke's Church Hall in Princess Street, Berry at 7.30pm and followed by the AGM. All members are invited to attend the AGM and to consider becoming part of the committee. For more information, please call Club Secretary, Adrian Bishop on 4464 3965.

### *Hazel King's Gardening News*

It's time to remove bindii and winter grass from lawns; a two-pronged fork is handy as it will also aerate the soil. Plant peas, cabbage, cauliflower, spinach, rhubarb and asparagus crowns but do not mulch the vegetable garden as this prevents light rain from reaching the soil. Fertilise flower and vegetable seedlings with a quick acting soluble product and move potted Cymbidium orchids to a sheltered well-lit position to encourage flowering. Prune roses but not those that flower in late winter or early spring such as Banksia Rose.



## **Get the best out of your business with Reliance Communications**

Communication advice tailored to your needs.

- Phone Systems
- Voice, Data & Mobile Solutions
- Unified Communications
- Small, Medium & Corporate Clients
- Single & Multi Site Installations

### **Local Service - National Capability**



Call or email now for an obligation free consultation.

**Jason 0418 880 988**

**[jason.walker@reliancecommunications.com.au](mailto:jason.walker@reliancecommunications.com.au)**



**Work Health & Safety,  
Quality Assurance,  
Environmental,  
& Risk Management  
Systems, Auditing and  
Training Solutions.**

**Paul Gibson. J.P.  
Consultant**

**Phone: 02 44 641 810**

**Mobile: 0487 340 912**

**Web Site:**

**[www.sqsm.com.au](http://www.sqsm.com.au)**

**Email: [info@sqsm.com.au](mailto:info@sqsm.com.au)**

# Review of Speed Zones on Coolangatta Road, Far Meadow

To the householder

Transport  
Roads & Maritime  
Services

JUNE 2014

**Review of speed zones on Coolangatta Road, Far Meadow**

Roads and Maritime Services is currently planning changes to the speed limits on Coolangatta Road between Bolong Road and Station Road, Berry

In response to concerns raised by a number of community members Roads and Maritime has reviewed the speed zones along this road in accordance with the NSW Speed Zoning Guidelines.

The speed zone review assessed a number of factors including crash history, road geometry, road side hazards, road usage, adjacent development, traffic mix, traffic volumes, and the number of access points along the route.

As a result of the review and in line with the guidelines Roads and Maritime now plans to introduce the changes shown on the **attached maps** before September this year.

The proposed changes will consolidate the 70km/h and both 90km/h speed zones into one 80km/h speed zone for the entire length. This will introduce a more consistent speed zone on Coolangatta Road and will also be appropriate for the road environment and function.

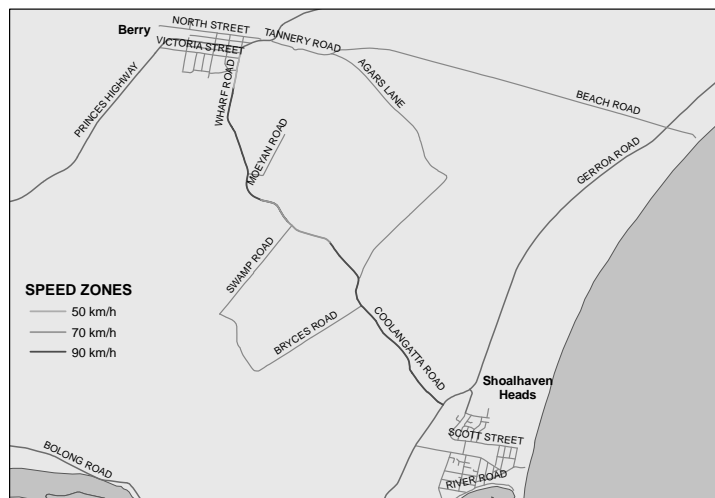
For further information about the planned changes please contact Nathan Boscaro by the 30 July 2014, on (02) 4221 2567 or by email at [Nathan.Boscaro@rms.nsw.gov.au](mailto:Nathan.Boscaro@rms.nsw.gov.au).

Yours faithfully

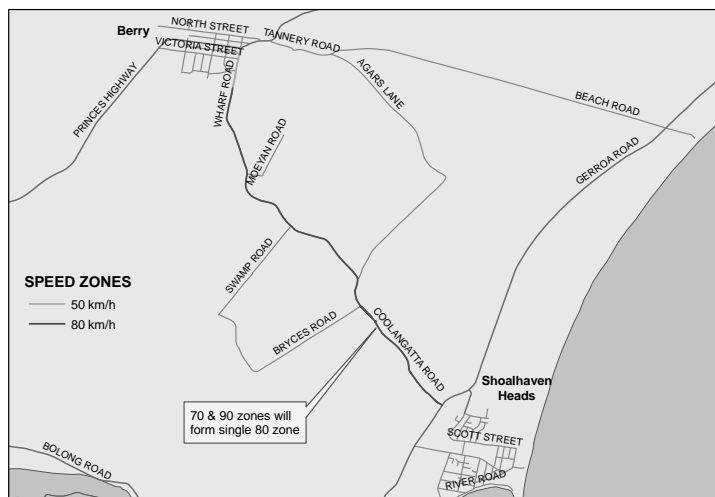
Adam Berry  
Network and Safety Manager  
Network Management, Southern Region

For further enquiries: Network and Safety Officer, Nathan Boscaro  
[www.rms.nsw.gov.au](http://www.rms.nsw.gov.au) | T 02 4221 2567 | F 02 4221 2777  
 For information on scheduled road work, visit [www.livetraffic.com](http://www.livetraffic.com)  
 or outside business hours call the Transport Management Centre on 132 701

## EXISTING SPEED ZONES



## PROPOSED SPEED ZONES



## It's a matter of opinion

Ask any real estate agent and they will gladly praise their achievements and successes. If however impartiality is important them a simple perusal of the sold pages on any of the industry websites will show **“who really is selling property in and around the village of Berry.”**

Raine & Horne Berry maintains meticulous sales records and trend results for the Berry region and are more than happy to discuss these results with all property owners in the region.

Having sold many properties prior to formal marketing we currently have a large database of buyers waiting for their special property to become available. So for the period till end September we are offering a promotional package of professional photography, professional floor plans and photo sign boards for all new properties presented to the market through Raine & Horne Berry

**Raine&Horne**®

Phone: 02 4464 1300  
2/65 Queen Street Berry NSW



the  
power of  
humanity



**100 YEARS  
PEOPLE HELPING PEOPLE  
1914-2014**

## BERRY RED CROSS CENTENARY DINNER

Many Berry residents will know it is the Centenary of the Australian Red Cross this year. As 'part of the world's largest humanitarian movement, Red Cross has been woven into the fabric of Australian life for 100 years - whether it's our immediate response to natural disasters, our blood service, or our everyday work to help vulnerable people.' ..... An exciting time for Red Cross members Australia wide.

The Australian Red Cross began as the 'Australian Branch of the British Red Cross Society' commencing at Government House, Melbourne on August 13, 1914 nine days after the outbreak of WW1. Berry Branch NSW began on August 18, 1914 and we are Still Active, Still Relevant 100years on!

As part of our celebrations a Centenary Dinner will be held on Saturday August 16 at Gabby's at Berry. The town will be painted RED that week-end with Apex Park and the Berry Shopping area participating. Numerous shop proprietors have already put their hands up to join in. If you are a shop proprietor and would like help phone Margaret on 4464 2479.

All residents or visitors are welcome to come to the dinner with guest speaker Mr Bob Handby. Bob is an Ambassador and Aid Worker for Red Cross. Since 1984 he has worked in conflict and disaster zones all over the world including Uganda, Iraq and Serbia. Bob has also helped thousands of people to rebuild and recover after floods, cyclones and tsunamis. Our guest also, a

local, Mr Glenn Kolomeitz, Barrister-at-Law, former Army Officer (Major). Glenn will briefly outline the role he played in operational tours, 'International Humanitarian Law in Action from East Timor to Afghanistan'. Michelle for Harps will be there to add to an enjoyable evening.

Tickets are \$65pp for a 3 course meal as well as a complimentary beverage. Tickets can be purchased by phoning Irene on 44 642 612 or Sheila on 4464 2049.

### ANNUAL GENERAL MEETING

The Annual general Meeting of the Berry Branch of the Red Cross was held on the 2nd July 2014 and the following members were elected to the committee:

**President:** Irene Birks

**Secretary:** Margaret Walsh

**Treasurer:** Sheila Keats

**1st Vice President:** Sandra Escott

**2nd Vice President:** Felicity Coughlan



the  
power of  
humanity



One of the photographs  
from the Berry Red Cross  
Centenary Calendar.

The guest speaker for the meeting was Pam Arnold from Nowra Family Support Services Inc. who gave a very informative and interesting talk on the broad range of services they provide to families in need.

### RED CROSS DISPLAY AT THE BERRY MUSEUM

From August there will be a display in the Berry Museum that will show the history of the Australian Red Cross and Berry Branch as part of its celebration of 100 years of working to help people. It will also show the many ways in which the Red Cross helps people and the way your local branch fits into the whole Association and the specific ways it contributes to helping people both within our own community and outside it.

### MORNING TEA LAUNCH OF THE HISTORICAL DISPLAY

If you are interested in viewing the display along with members of the Berry Branch of the Red Cross and members of the Berry and District Historical Society you are more than welcome to come to morning tea in the Berry Museum at 10am on Friday, August 8th. The Speaker will be Judy Harper, Red Cross Southern Region Manager.

Jenny Clapham

Berry Red Cross - Publicity Officer

Phone: 4464 2446



St Luke's Anglican Church

Princess Street, Berry

*invites you to a*

**CHORAL  
EVENSONG**

**The Nature of God**

3pm Sunday 24 August 2014

**Enquiries:**

office@berry.anglican.asn.au

**4464 1058**



**Chimney Sweep  
Wood Fire Installation  
and Maintenance**

Servicing Berry for over 25 years  
Locally Run Family Business  
Specialising in all your Wood Fire Needs  
Licenced, Insured, Professional & Clean.

**Contact Russell:**

**0412 241 557 / 4464 1557**

**Or Luke: 0413 737 316**

Lic No L7020

**Shoalhaven Lydian Singers**

**presents**

**Franz Schubert's  
Mass No 6  
in E Flat Major**

Nowra School of Arts

Berry St, Nowra

**Dates:**

Saturday September 6th at 7.30 pm

Sunday September 7th at 2.30 pm

**Tickets:**

\$25, Concession \$20

Shoalhaven Visitor Information Cntr

Ph: 1300 662 808

**www.lydiansingers.org.au**



## INTRODUCING GOODNESS GRACIOUS BEAUTY

From an early age, Grace always knew she wanted to be a beauty therapist. She embarked on her journey in 2007 when she commenced her four-year apprenticeship with Ella Bache in New South Wales' largest inland city, Wagga Wagga.

After almost six years and the Ella Bache title of State Therapist of the Year for New South Wales and ACT in 2011, Grace moved to Berry where she has been providing beauty treatments during the past two years.

Berry stole her heart, and this week saw Grace enter a new chapter of her life and fulfil yet another dream – owning her own beauty salon.

Goodness Gracious Beauty, located in the Old Post Office Building, oozes charm and sophistication. Treatments are all customised and personalised to the individual and clients can expect both high quality service, treatments and products.

Specialising in indulgent and soothing facials and skin diagnosis, you are sure to be leaving this boutique beauty salon saying 'Goodness Gracious'.

## NOW OPEN

137 Queen St, Berry (Old Post Office Building) ph. 0415 322 130 e. [grace@goodnessgraciousbeauty.com.au](mailto:grace@goodnessgraciousbeauty.com.au)  
[goodnessgraciousbeauty.com.au](http://goodnessgraciousbeauty.com.au)




## OPENING OFFER

With any Sothys Facial treatment  
you will receive a  
**FREE** lash and brow package  
*(lash tint, eyebrow tint and eyebrow wax)*  
**PLUS** a relaxing hand, foot and  
scalp massage valued at \$50.

**Offer valid until 31<sup>st</sup> August 2014**

**Phone for an appointment**  
0415 322 130

Exclusive stockists of  **SOTHYS**  
PARIS



## THE BERRY ALLIANCE



CCB Meeting Update: Application RA14/1001  
From Andre Lissendon (Development  
Coordinator, SCC) regarding Regional  
Development Application RA14/1001, 801  
Kangaroo Valley Road, Bellawongarah- Lot  
13. Excerpt Below:

Council wishes to advise you that this  
application has now been withdrawn by the  
Applicant. A copy of the Applicant's letter  
withdrawing the application can be viewed  
on Council's DA Tracking website <http://www.shoalhaven.nsw.gov.au> (refer to document  
with reference number D14/141014).

### Broughton Vale-Berry Rural Fire Brigade

Our members invite you to our  
station **OPEN DAY** on

**Saturday 13 of September 2014**

Between 11.00am and 3.00 pm.

### Are you fire wise?

Do you have a fire safety plan?  
Do you know your risk?

Find out and more at 82 ALBERT ST BERRY,  
BEHIND BERRY MUSEUM

**Hope to see you there.**

### Berry Tennis Club

Annual General Meeting  
will be held on  
**August 7, 2014, 6.30pm**  
at Berry Bowling Club.

*All members are welcome.*



## Berry Community Church

### PARENTING 'DIGITAL NATIVES'

In 2001 Marc Prensky coined the phrase 'digital native' to describe a generation who have been born into the age of technology. It describes people born in or after the 2000s who have never known a world without the significant influence of the internet and social media. These people have never had to listen to the 'din, ding, buzz werrrr....' as your phone line gave its best R2D2 impersonation 'dialing up' to the World Wide Web. They don't know a world that was absent of 'the essentials of life' such as Google, Facebook, and YouTube. For many technology is so much a part of their lives that they would rather lose a limb than go without being 'connected to the world' 24/7.

A recent study conducted by MacAfee suggests that today's digital natives spend on average 1 ½ hours on the internet each day and much more on other forms of technology such as gaming consoles, TV and tablets. For some teens and tweens more time is spent 'living' on the internet than with their families. Much of this time is spent on social media sites such as Facebook, Twitter and Instagram.

Many of us digital immigrants, tourists or never been theres live with these digital natives (otherwise known as our children) and are unsure or anxious about the level of influence technology is having on their lives. The internet has grown at such a fast pace that many of us left behind or at least asking questions of how we should be interacting with digital natives. The good news is that studies also suggest that parents still hold more influence over their children than social media. However this decreases as their children grow into their older teens. It is vital that we as parents use this influence to guide and direct our children to interact responsibly and safely on social media.

The Parenting Place makes these suggestions to parents who wish to raise their children to be active, productive and safe members of the world both on and off – line.

- Place your computer in a 'high traffic' part of the house, avoid bedrooms.
- Put real time limits around usage.
- Become part of your children's online world.
- Model for them responsible usage of technology.

Berry Community Church will be facilitating a night for both teenagers and their parents on Friday 15th August at a cost of \$5 per family. We hope to provide a space to be educated, encouraged and equipped to parent our children on purpose in this area. We will also be running a broader 6 week 'parenting toolbox' course proceeding this night for parents of teens and tweens. If you are interested please contact Joel 0403 193 945 [joel@berrycommunitychurch.org](mailto:joel@berrycommunitychurch.org).



### stylish marketing, premium results

whether you are selling a simple  
studio or a million dollar property, our  
stylish marketing and experienced  
agents will provide a premium result.

belle property berry  
gary dale 0418 211 917  
nick dale 0419 425 166  
[berry.info@belleproperty.com](mailto:berry.info@belleproperty.com)

122 queen street, berry

[belleproperty.com](http://belleproperty.com)

02 4464 1636

**belle**  
PROPERTY

# LEARNING FROM THE CRAFTSMEN

We recently had a very informative visit from 2 students from Canberra University. Selma Diler and Leah Johnson. Both girls are studying for their Masters in Occupational Therapy and the Berry Men's Shed was invited to accommodate the girls for the day. During their time at the Shed they spoke to nearly all members to try and get a clear understanding as to why they joined the Shed and what were they getting from the Shed. In addition the girls addressed the members about what they were studying and how spending time in the field helps them get a clear understanding on how Men's Shed operate.

'We found the entire experience very rewarding' said Selma Diler.

At our last health talk we had a presentation from Don Owen, a survivor of Prostate cancer, who spoke about his experience

and in particular how to look for the early warning signs.

Our next health talk will be held on Thursday 16th October and our special guest will be Berry Pharmacist Ross Hobson who is well known to nearly all the Berry Community. It will be a special presentation with lots of helpful hints on staying healthy. The presentation will be followed by our very healthy Men's Shed BBQ. Please make a note of the date as we are expecting a large crowd to attend.

On the Saturday of the October long weekend the Shed is planning a special 'GARAGE SALE' to offer to the community a large assortment of furniture at value for money prices. For those who would like to get in early, visit the Shed on Tuesday or Thursday and see the Supervisor on duty.

**Richard Wiseman - Secretary**



Selma Diler and Leah Johnson learning the finer points from Shed Member Terry Smith.



Well here we go again starting another term for our beautiful families. On the second Tuesday of the school holidays we had a great train trip to Kiama and a play in the park before returning home in time for lunch. The children all had a very adventuresome morning, it is great to observe the confidence and bonds that the children are forming with each other as well as with other adults. The train trip is always one of great excitement, I am pleased to say we weren't in a quiet carriage and the excitement of tunnels and other outside objects were fully expressed. The road building and machinery as well as known landmarks like the Jelly Bean centre where some of the children go for care were all the objects of much waving and excitement. The methods used to encourage children to use language as well as movement is always a great way for the child to develop confidence and ability to explore with safety in the areas they play in. The fun of going down a new slide or a tunnel in the playground was of great excitement for some of our two year olds. So all in all a very special day was had by all.

**Trish Nicholson**

For more information regarding the mainly music activity come along to Berry Community Church on Tuesday mornings. We commence at 10am, cost \$5 00 per family. Or phone Trish on 4464 1693 or 0401 151 820

## bombo

blinds | curtains | shutters | awnings



### 4237 8280 [www.bombo.com.au](http://www.bombo.com.au)

Visit our beautiful showroom at **7 Johnson Street, Kiama Downs** (near the IGA)

WE CARRY THE FABULOUS "BLINDS BY PETER MEYER" RANGE • ALL PRODUCTS COMPLY TO CORD SAFETY LAWS



# OUT OF SIGHT, OUT OF MIND: PLASTICS

**How much plastic do you throw away? It's hard to know, because it's gone so quickly, recycled or binned. To find out, you might try this simple exercise; keep ALL plastic items that you would normally get rid of, for a week, a fortnight, or month if you can maintain the discipline. (If it's food packaging, just wash it out at the end of your regular dishwashing.) This can become a household project, and a good way to educate children about how much plastic we use. Having done this myself, even if you think you don't consume a lot of plastic, you could be surprised how it adds up. When you're done, recycle as usual. Large supermarkets offer recycling for some food packaging the Council won't take.**

However, while most plastic items are labeled as recyclable, in reality they are "downcycled" that is, a plastic bottle cannot be turned into another plastic bottle or item of similar quality. Instead, plastic items can only be made into lower quality products, which then cannot be recycled.

It would be ludicrous to suggest going back to a time when plastic was not part of our lives. Instead, you can try to minimize the amount of plastic you use. When you are shopping, ask yourself if it's a "single use" item. Not only can single use plastic items pollute rivers and oceans, the amount of energy required to produce something used once only is incredibly wasteful.

## ONE USE ITEMS

- Use matches in preference to plastic lighters, or invest in a refillable metal lighter.

- Decline a straw, or buy a reusable stainless steel straw.
- A reusable "sippy" cup is an alternative to a straw; there are modern styles for adults or invalids who would object to using a baby's cup!
- Disposable nappies are generally not environmentally friendly and the plastic cannot be recycled; however cloth nappies require a level of commitment and time that not everyone can achieve. Internet research will provide leads to "eco nappies" that have a high level of biodegradability.
- Using a fountain pen and ink is not really practical, but you can avoid cheap plastic pens by buy a pen that takes refills.
- For BBQs and picnics, invest in sturdy plastic or enamel plates and cups for reuse; if you're going to throw away items after one use, try paper plates and disposable bamboo cutlery.
- Use microfibre cleaning cloths, handkerchiefs and cloth serviettes, instead of paper towels, tissues and serviettes that are packaged in plastic.

## FOOD SHOPPING

- Always take carrier bags when you go shopping. A little planning is required, but over time you can train yourself to be better organized. If you're only buying milk, a newspaper or the like, you don't need the proffered plastic bag.
- Buying in bulk can eliminate packaging; items like dried beans, pulses & fruit, are stored in bulk bins in some shops. Store bulk purchased food in well-sealed containers to keep it fresh, and to avoid moth infestation.
- You can also reduce the amount of packaging by buying general food items in larger sizes.

- Avoid buying frozen food, which is often highly packaged; even the cardboard box has a plastic coating.
- If you have a choice of buying in glass or plastic, choose glass. Glass containers can be used for long storage, or recycled.
- Buy bread from local bakers, where loaves are sold in paper bags. If you do buy bread from the supermarket keep the plastic bags, they can be reused when you buy fruit & vegetables.

## TAKE AWAY MEALS

- Take away food is generally packed in plastic; sushi packaging is perhaps the worst example. You may be able to bring your own container, and avoid the plastic cutlery!
- If you buy take away coffee do without the lid. Better still, buy a reusable coffee cup.

## GENERAL

- Grow some of your own produce. Easy to grow vegetables include lettuces, onions, garlic, pumpkins, potatoes, beans, peas, radishes and beetroot. Also consider growing fruit that requires a lot of packaging to transport without bruising, such as strawberries, raspberries and figs.
- Store leftover food in sealable containers, rather than plastic film wrap.
- Learn to make your own yoghurt; it's easy, and you can reuse the same container.
- Children's plastic toys are cheap and appealing. However, the quality of the toy is usually reflected in the pricing, and cheap toys are liable to break quickly. Better to encourage your children to enjoy quality rather than quantity.
- If you have a choice between plastic or cardboard packaging, buy the latter.



Cnr Angus & Flinders Road,  
South Nowra NSW 2541

Ian Stralow

**New Kitchens  
Kitchen Makeovers  
Laundry Cabinets  
Sewing Rooms  
Office Fitouts  
for home and work  
& NOW BUILT IN WARDROBES**

**PHONE: 4423 1113**

E: blackwood@southernphone.com.au

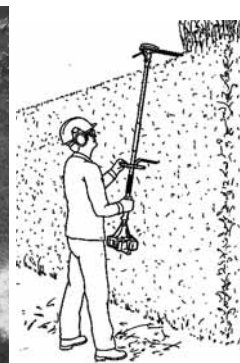
www.blackwoodkitchens.com.au



# HATHAWAY HEDGES

LANDSCAPE MAINTENANCE

- ALL SIZE LAWNS
- ALL SIZE GARDENS
- ALL SIZE HEDGES
- PLANT SALES
- ADVICE
- QUALIFIED HORTICULTURIST
- OVER 20 YEARS EXPERIENCE



*Based in Broughton Village we service Berry and Surrounding Areas*

**Call Lawrie Hathaway**

**0411 888 333 A/H : 42 342 900**



# Berry Vet Clinic

## AUGUST IS DENTAL MONTH

August is Dental Awareness Month, and to promote dental health we will be offering FREE dental check-ups at the clinic. Dental disease is a very common and serious health problem – imagine if we never brushed our teeth! During August we're offering a 10% discount on all dental procedures (Pensioners and Seniors get an extra 5% off)! Check out Facebook or our website for more information, or call or drop in to the clinic to chat to our friendly staff.

 [www.facebook.com/berryvetclinic](http://www.facebook.com/berryvetclinic)



### Chris Stott Joins the Practice

We're excited that Chris Stott has joined the practice as our 5th full time vet. Chris was born in Bathurst, on his parents farm where the main interest was stock horses. Since then Chris has graduated his Bachelor of Veterinary Science from Charles Sturt University in the class of 2014. He has a keen interest in large animals but also wants to pursue his interest in small animal orthopaedics. Out of work Chris enjoys cycling of any kind, rugby, skiing and fishing with his Border Collie, Ben.

#### Berry Vet Clinic

84 Queen Street  
Berry NSW

Ph: (02) 4464 1899

Email: [info@berryvet.com.au](mailto:info@berryvet.com.au)

Open Monday to Friday 8am – 6pm  
Saturday 9am – 12pm

Shoalhaven Heads open 10-12 Sunday

Dr Anthony Bennett B.V.Sc. (Hons)

Dr James Carroll B.V.Sc. (Hons)

Dr Bryden Krebs B.V.Sc. B.V.Bio

Dr Hannah Belling B.V.Sc.

# BERRY SPINNERS AND WEAVERS WORK FOR OTHERS

**BIGGEST MORNING TEA** - The Berry Spinners and Weavers held the Biggest Morning Tea on 22 May. Plates of delicious homemade goodies and lots of chatter made for an enjoyable morning. With a crazy raffle (with all prizes donated by members) as well as generous donations, we raised the huge amount of \$550 for the Council. For a small group of 30 members and friends, this was an amazing effort.

**CHARITY KNITTING** - During each year we take part in knitting for various local charity needs – e.g. beanies for homeless people, baby knitting for the hospital etc. Our members enjoy creating these small items, especially knowing that we are giving to those who are in need.

**FREE CHILDREN'S CRAFT** - For children 5 to 12 years old, we will be holding School Holiday Craft Sessions again in the September school holidays, following our previous two very popular holiday sessions. These sessions are free and all materials are supplied. Children must be accompanied by a parent or guardian who can also join in on the crafty fun if they wish. Bookings are needed so that we can have enough materials and helpers available. Numbers of children are limited to 20. With 20 children, their parents or guardians, and our members, it turns out to be a crazily busy morning, but from all accounts a very enjoyable time is had by all. As well as knitting, crochet, braiding, pompoms, tassels etc., the Spinners and Weavers are going to be adding some new crafts this time. Felt jewelry and paper-making are two that are being considered. Watch out for details in the September Town Crier.



## Berry Men's Bowling Club

Despite the colder weather the Men's Club has been very active with good attendance at the Wednesday and Saturday social bowls and with play proceeding in the 2014 Club Championships.

Both the Major Singles and Major Pairs have now been concluded after very competitive matches in the finals. Mark Power was victorious in the Major Singles defeating the very experienced Peter Delamont. Mark was able to get away to an early lead which placed him in a good position when Peter commenced making a late charge. The Major Pairs which were played in very cold conditions on a very fast green saw Russell Tulloch and his skip Rod Loosemore take the title from Nathan Bezzant and Peter Delamont in a game that went down to being decided on the last end.

Additional information regarding playing of lawn bowls at Berry can be obtained from the Club staff or by telephoning 0488729229. Bookings to play both Wednesday and Saturday social bowls close at 12 noon with play commencing at 1.00 pm.



## Householders Asbestos Disposal Scheme (HADS)



**Shoalhaven City Council is participating in a NSW EPA one year pilot scheme to support householders to dispose of asbestos waste from home renovations and demolitions.**

The scheme allows for a reduced tipping fee on bonded asbestos disposal at Ulladulla and West Nowra Recycling & Waste Depots for Shoalhaven householders.

**Conditions apply to access this scheme.**

**The Scheme commences on 1 July 2014 and finishes on 30 June 2015.**

*This pilot scheme is supported by the NSW Environment Protection Authority (EPA) with funding from the Waste Levy.*

For more information telephone Council on Tuesdays and Thursdays between 9am and 4pm on **(02) 4429 5555** or go to the Council website **[www.shoalhaven.nsw.gov.au](http://www.shoalhaven.nsw.gov.au)**

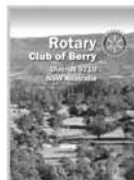




# A Great Year

At the Berry Rotary Changeover dinner on 10 July, outgoing President David Ensor outlined a huge list of successful projects from the preceding twelve months. There were large projects, such as the Small Farm Field Days, the Australia Day Breakfast, New Year's Eve Fireworks, the Berry Celtic Festival and a host of youth oriented projects such as Youth Enrichment, Youth Leadership, National Youth Science Forum and involvement with the local Primary School programs. The list of local charities supported included CanAssist, the Life Education Program, and Paradise Farm.

On the International front, the Club has given strong support to an orphanage in Cambodia, clean water supply to two schools in Thailand, and the Umoja Centre in Tanzania and the Polio eradication program. The outstanding showpieces have been the endowment of the "Artis Medenis Rural Youth Scholarship Fund" and the amazing "Jump for Polio" program by member Ken Hutt.



## THE ROTARY CLUB OF BERRY Inc

President: Tina Ballard  
Secretary: David Edmondstone  
PO Box 81 BERRY NSW 2535  
Phone: 4464 1095  
Email: dedmondstone@stauff.com.au



Incoming President, Tina Ballard, introduced her new board of directors with the promise that it is going to be yet another great year. For more information, visit [www.berryrotary.org.au](http://www.berryrotary.org.au)

### \$5000 cheque presentation to the Berry Celtic Festival

On 15 July, the Local Member for Kiama, Gareth Ward, presented a cheque for \$5000 to the committee of the 8th Berry Celtic Festival. The Festival, commenced in 2007, was originally conceived to raise funds for the Linear Accelerator project in Nowra. Since its inception, the Festival has contributed over \$134,000 to the cause.

Now that the Linear Accelerator is up and running in the Shoalhaven Cancer Care Centre, the funds raised have been directed to supporting:

- CanAssist – helping regional cancer patients and their families
- Paradise Farm – a centre for at-risk youth
- ROMAC – the Rotary Oceania Medical Aid to Children program for children of the Pacific that need special surgical treatment in Australia.

The donation of \$5000 by Gareth Ward will be a great help in supporting these causes, and is consistent with his support of local community organisations.

The Celtic Festival is a project of the Rotary Club of Berry, assisted by other regional service organisations and Rotary Clubs. It has grown steadily since the start, and each May draws 180 musicians and 3000 to 4000 spectators to Berry and the region.



Albert Street  
Berry



## Berry Uniting Church

Phone: 0434 977 123

Email: [minister@berry.unitingchurch.org.au](mailto:minister@berry.unitingchurch.org.au)

Sunday Celebrations: 9.30am  
Rev. Dr. David Millkan

### Groups & activities:

Bible Study Groups  
Community Garden  
Fellowship Groups  
Prayer Groups  
Men's Shed

Social Craft Group  
Young People's Drama Club  
Computers for Seniors

"To know Christ & make him known"

<http://berry.unitingchurch.org.au>

## Berry Small Farm Field Days: 5/6 Sept URGENT URGENT URGENT

If you are an exhibitor, or a potential exhibitor for the 3rd Annual Berry Small Farm Field Days, there is still time, but only just, if you want to be listed in the official program.

Entries for listing in the official program must be in by 30 July, so don't delay - go to [www.berryrotary.org.au](http://www.berryrotary.org.au) to sign up, or call the co-ordinator, Paul Andersen, on 02 4403 0300

For more information, visit [www.berryrotary.org.au](http://www.berryrotary.org.au)  
(Noel Marshall, Rotary Club of Berry, Inc. 0408 653 056)

### An Oldie and a Real Bad 'Un is Back

There have been many recent cases of feline parvovirus. This is the original parvovirus that mutated to infect dogs in the early 1980's and has tended to be forgotten. Symptoms include fading kittens and severe gastro-enteritis in adult cats. Aaks us about vaccination against this killer.

### Paralysis Tick Vaccine Lacks Bite!

Mark was involved with UTS in a study to make a vaccine against paralysis ticks. It involved collecting hundreds of ticks and extracting the toxin's DNA. Unfortunatley, the DNA was found to vary too much, putting an end to the research.

### Want Total Flea Control? Activyl!

In Feb 2014, we were very excited to see the results of a very large flea study on over 100 flea-infested homes in Tampa, Florida (USA) with Activyl. It showed some of the best flea control ever seen by the world's leading flea guru, Dr Mike Dryden, for over 20 years.



AND... Activyl is now available at BHVG in either SINGLE (monthly) or SIX monthly packs.

### Senior Samantha

Sam, at 17.5 years of age, is one of our most senior feline patients. She has regular visits to BHVG for checks on her weight, body condition, kidney and liver function and blood pressure.

She is much loved by her owners who give her lots of TLC and ensure she takes her medicine and eats the proper prescribed diets.



**BHVG** BerryHaven  
Veterinary Group

1/78 Albert St. Berry. NSW 2535

House Calls: 12pm - 3pm

Mon-Fri: 8am - 12pm & 3pm - 6pm

Visits: 12pm - 3pm

Sat: 9am - 10.30am

24 Hour Emergency Cover  
Ph (02) 4464 3986



# 2015 Berry Showgirl – the search begins



The showgirl committee is seeking expressions of interest from entrants and sponsors for the 2015 Berry Showgirl competition. The objective of the competition is to find a young woman to act as an ambassador for the Berry Show Society at the Zone and State finals. Each entrant will be a special guest at the 2015 Berry Show and will perform duties such as presenting prizes, sashing livestock, speaking with media and generally being in the public eye. It is not a beauty pageant; the girls must demonstrate a genuine interest in and knowledge of our local area and rural NSW.

Our 2014 Showgirl, Mikhaela Grey was fortunate enough to make it to the State finals and was a special guest at this year's Royal Easter Show. Mikhaela's Showgirl experience was something she will remember for the rest of her life. *"The Showgirl competition has given me so much more than I could have ever expected. Not only was the week in Sydney a great way to observe the show from a different angle, it has also given me the opportunity to meet and network with people that I would not have had the chance to ordinarily"* she said.

*"On top of that, I feel like I have grown as a person - I have become so much more comfortable with myself whether it be in public*

*speaking or simply making my way around a room talking with people. The Showgirl competition helps develop all the essential skills for young women to take their knowledge and strengths and be able to communicate them with people from all walks of life. I deeply encourage any young woman to be part of the showgirl competition because I had no idea of the impact it would have on me and the future opportunities it is going to create"* Mikhaela said.

The competition is open to any women aged between 18 – 25 years.

For further information, please contact Therese: 0403 285 923 or Sharon: 0428 616 462



Call of Duty! Our Showgirls having a few laughs as they sash the winners the winning wood choppers.



Showgirl presentation moments before the winner was announced.

Weed spraying and wiping of fireweed  
Spraying of Blackberry, Lantana, Privet, Wild Tobacco tree  
Spot-spraying of Parramatta grass and other environmental weeds  
Stem injection of weeds along creek banks and sensitive areas  
GPS co-ordinates recorded to allow for future inspections



*Scrubmaster  
Groundcare  
Services*

Ph. 0412 437 118

- QUALIFIED HORTICULTURALIST
- QUALIFIED ARBORIST
- CHEM CERT LEVEL III
- \$20 MILLION PUBLIC LIABILITY
- ESTABLISHED 1995

Michael Greaves

Berry NSW • Phone: 0412 437 118

Email: scrubmastergroundcare@gmail.com

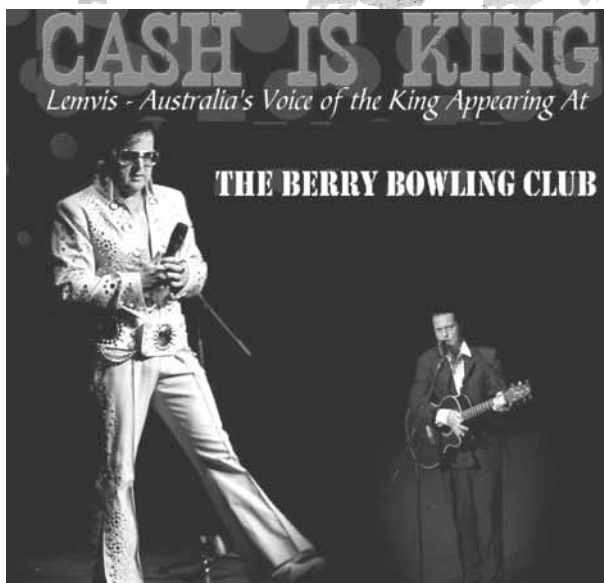
ABN: 71 442 596 9693

Member of NSW Groundsprayers Association Specialising in steep or wet areas

# Berry bowling club

140 Princess Hwy  
Berry Ph:4464 2995

## UPCOMING SHOWS



**SAT 25th October 7.30**

*Happy Hour*  
*Saturday 4.30 - 5.30*

## Meat Raffles

### Thursday

Berry Fisho's Raffle  
Tickets on Sale 6pm Drawn 7.15

### Friday

Club Raffle  
Tickets on Sale 6.30pm Drawn 7.30

### Saturday

Berry Cricket Club Raffle  
Tickets on Sale 6.30pm Drawn 7.30

### Sunday

Club Raffle  
Tickets on Sale 6.30pm Drawn 7.30  
Free Trivia on Sunday



Berry Bowling Club

# CHINESE

RESTAURANT

Lunch & Dinner - Wednesday to Sunday Ph 4464 2388

## Social Bowls

Ph: (02) 4464 2995



### Men's

Wednesday  
1pm

### Mixed

Thursday 9am  
Saturday 1pm

### Ladies

Tuesday 9am



Consider Berry Bowling Club for your next  
Special Event... Taking bookings now....  
\*\*\*See our friendly staff at the club\*\*\*



# SHOALHAVEN CITY COUNCIL

## *News for Berry*

### COMMUNITY CONSULTATIVE BODY - BERRY ALLIANCE

The following Development Applications, Development Determinations and other items have been notified through the month and in accordance with Berry Alliance policy they have been placed on the Berry Alliance Notice Board in the window of the Post Office, posted on our web site [www.berryalliance.org.au](http://www.berryalliance.org.au) and printed in the next available issue of the Town Crier. The Berry Alliance is the Community Consultative Body in Berry and we advertise all items that we are advised of by council so community members can have their say. **Please Note:** Council now have DA Tracking available on their web site where all details including submissions are displayed for your information. **Go to:** [www.shoalhaven.nsw.gov.au](http://www.shoalhaven.nsw.gov.au) and go to DA Tracking.

### APPLICATIONS RECEIVED

- DA14/1668 Two Storey Dwelling 244 Brogers Creek Rd, BROGERS CREEK - 13-Jun-14  
DA14/1683 Bed & Breakfast Accommodation 45 Houston Pl, BERRY - 16-Jun-14  
DA14/1703 Permission to Use Existing Rear Deck & Storeroom 411 Coolangatta Rd, FAR MEADOW - 20-Jun-14  
CD14/1152 Swimming Pool - Inground 778B Kangaroo Valley Rd, BELLAWONGARAH - 23-Jun-14  
DA14/1715 Dwelling Additions 30 George St, BERRY - 24-Jun-14  
CD14/1156 New Sunroom, Deck & Internal Alterations BROUGHTON 246C Tindalls Lane, BROUGHTON - 30-Jun-14  
DA14/1771 Single Storey Dwelling Huntingdale Park Rd, BERRY - 4-Jul-14

### APPLICATIONS DETERMINED

- DA14/1320 Dwelling Additions 1036 Kangaroo Valley Rd BELLAWONGARAH - Approved - 13-Jun-14  
DA14/1203 "Stage 1 - Demolition of Existing Dwelling  
Stage 2 - Construction of Attached Dual Occupancy  
Stage 3 - 2 Lot Residential Subdivision  
Stage 4 - Construction of Single Storey Dwelling" 40 Albert St BERRY - Approved - 12-Jun-14  
DA14/1501 Advertising sign (Huntingdale Park Real Estate Sign)  
Huntingdale Park Rd BERRY Withdrawn - 13-Jun-14

Applications are advertised in accordance with Council's Community Consultation Policy for Subdivision and Development Applications and the Formulation of Development Guidelines and Policies.

Please note, however, that not all applications on this list will be advertised and that advertising JUNE not commence immediately, particularly if important documentation has been omitted from the application.

If an application is required to be advertised, the relevant community associations will be separately notified of the advertising period and the closing date for receipt of submissions.



### Pelican Solicitors

**Free 20 minute no obligation  
phone consultation on  
your query regarding...**

- ✓ Residential conveyancing
- ✓ Commercial and bank law
- ✓ Debt recovery
- ✓ Family law matters
- ✓ Wills
- ✓ Powers of attorney
- ✓ Enduring guardianship
- ✓ Assistance with probate
- ✓ Contracts

**Contact Charlotte Prinsloo  
on 0406141791**

**For more info  
[www.pelicansolicitors.com.au](http://www.pelicansolicitors.com.au)**

Very reasonable rates and pensioners discounts

## Berry agency now open

Our new agency at IGA Supermarket, 123 Queen Street, Berry is now open Monday to Friday 9.00am - 4.30pm.

Here at our agency we can:

- Process deposits, withdrawals, transfers and EFT's in real-time so your accounts will be updated immediately.
- Open new accounts and update details on existing accounts.
- Help arrange any lending, including home loans, personal loans, business lending and credit cards.
- Assist with any other banking needs you may have.

Come in and meet our friendly staff.

Bendigo and Adelaide Bank Limited. ABN 11 068 049 178 AFSL/Australian Credit Licence 237879. (S49052) (07/14)

[www.bendigobank.com.au](http://www.bendigobank.com.au)

Berry agency



## OPEN DAYS AT BUNDANON

Wander through the Bundanon Homestead and Arthur Boyd's Studio. Take a bushwalk or guided tour. Tea and coffee available. Bring a picnic lunch.

**Open every Sunday 10.30am-4pm**  
Cost: \$12 adults, \$8 concession  
Children under 16 FREE

## WILLIAM BARTON



Acclaimed Australian musician William Barton will be launching his new album *'Dust Storm'* including new compositions in contemporary didgeridoo created at Bundanon.

**Sunday 24 August 1.30pm**  
**Boyd Education Centre, Riversdale**  
Cost: \$25 adults, \$20 concession, children under 16 FREE  
**Bookings: bundanon.com.au**  
**Ph: 4422 2100**

## BUNDANON TRUST



The Emporium Food Company is a gourmet deli and café, sourcing gourmet fare from all over the globe.

If there is something you can't find we will source it for you.

Or you can sit in-store and enjoy a light lunch with Toby's Estate Coffee.

**127B Queen Street Berry NSW 2535**  
**T: 4464 1570 F: 4464 3291**



# Calendar of

## JULY/AUGUST

**26th July - Saturday** - CWA Winter Street Stall. Broughton Court, Berry. Contact Marie 4423 2164.

**27th July - Sunday** - Muir House Art Gallery Artists in Action Day 10am-3.30pm  
10 Prince Alfred St Berry. Enq 4464 1476.

**27th July - Sunday** - Berry Produce Market held 8am to 2pm in Andrew Place Park, 102 Queen Street. Providing fresh produce every second Saturday and fourth Sunday of the month. Enquires: contact Tricia on 0425 842 909.

**2nd- 3rd August - Saturday and Sunday** - Camellia and Floral Show, School of Arts, Alexandra Street, Berry. Lorraine Heath 4464 2061.

**3rd August - Sunday** - Berry Markets, 8am-2.30pm Berry Showground - Enq 4464 1476.

**6th August - Wednesday** - Berry Computes for Seniors - contact Kevin Watson 4448 6267.

**7th August - Thursday** - CCB Meeting, Berry Courthouse, 6.30pm.

**7th August - Thursday** - Berry Tennis Club Annual General Meeting will be at 6.30pm at Berry Bowling Club.

**9th August - Saturday** - Zonta Fireside Cocktails and Information Evening @ The Arbour \$30pp 5.30-8pm. Phone Mary for bookings 4464 1191.

**10th August - Sunday** - Music Shoalhaven Concert. Trio VoCE. Gail Robertson (voice), Christine Jarczewski (viola), Sabine Madden (piano). Berry School of Arts 2pm.

**16th August - Saturday** - Red Cross Berry Branch Centenary Dinner @ 'Gabby's at Berry'. Guest speaker, Ambassador and Aid Worker for ARC since 1984, Mr Bob Handby; an experienced worker in areas of conflict and disaster zones, floods, cyclones and tsunamis, a compelling speaker. For tickets phone: Irene 4464 2612.

**19th August - Tuesday** - Berry & District Garden Club, St Luke's Hall, Princess St, Berry. Adrian Bishop 4464 3965.

**20th August - Wednesday** - Berry Computes for Seniors - contact Kevin Watson 4448 6267

**21st August - Thursday** - The Australian Decorative and Fine Arts Society Lectures for 2014, at the Berry School of Arts at 7:30 PM, Presentation: Looking at Dickens - 1812 - 2012.

**21st August - Thursday** - Zonta Coffee Morning 10.00am @ Our Book Shop.

**24th August - Sunday** - Muir House Art Gallery Artists in Action Day 10am-3.30pm  
10 Prince Alfred St Berry. Enq 4464 1476.

**24th August - Sunday** - 3pm Choral Evensong - Theme: The Nature of God, at St Luke's Anglican Church, Princess Street, Berry. Enquiries: 4464 1058, [www.berry.anglican.asn.au](http://www.berry.anglican.asn.au)

**26th August - Tuesday** - Zonta Club of Berry Dinner Meeting @ Gabby's 6.30 for 7. Bookings, Mary on 4464 1191.

## FUTURE DATES

**3rd September - Wednesday** - Berry Computes for Seniors - contact Kevin Watson 4448 6267.

**4th September - Thursday** - CCB Meeting, Berry Courthouse, 6.30pm.

**6th September, 7.30pm & 7th September 2.30 pm - Saturday and Sunday** - Shoalhaven Lydian Singers present Schubert's Mass in E Flat Major. Nowra School of Arts.  
Tickets \$25, Concession \$20.

**7th September - Sunday** - Berry Markets, 8am-2.30pm Berry Showground - Enq 4464 1476.

**11th-14th September - Thursday to Sunday** - Berry Gardens Festival. Mary Seelis 4464 1191.

**14th September - Sunday** - 2:30pm. Scots Presbyterian Church Berry (cnr Alexandra St and Victoria St) invites you to an afternoon of singing well-loved hymns with the Wollongong Welsh Choir. Afternoon tea provided. Cost \$10. All proceeds towards SECET (Shoalhaven Employers of Christian Education Teachers). Enquiries 4464 3365.

**13th September - Saturday** - Broughton Vale-Berry Rural Fire Brigade OPEN DAY between 11.00am and 3.00 pm.

**14th September - Sunday** - The Marais Project. Belinda Montgomery (soprano), Tommie Andersson (lute, theorbo & original 19th century classical guitar), Jennifer Eriksson (viola da gamba), Catherine Upex (viola da gamba). Nowra School of Arts 2pm.

**16th September - Tuesday** - Berry & District Garden Club, St Luke's Hall, Princess St, Berry. Adrian Bishop 4464 3965.

**17th September - Wednesday** - Berry Computes for Seniors - contact Kevin Watson 4448 6267.

**23rd September - Tuesday** - Zonta Club of Berry Dinner Meeting @ Gabby's 6.30 for 7. Bookings, Mary on 4464 1191.



# Events

**25th September - Thursday** - The Australian Decorative and Fine Arts Society Lectures for 2014, at the Berry School of Arts at 7:30 pm, Ivories – sources and uses.

**26th September - Friday** - The Australian Decorative and Fine Arts Society Lectures for 2014, at the Berry School of Arts at 7:30 pm, Gems from Life – amber, pearl, tortoiseshell as adornment. (luncheon focus day) Nowra Players Theatre, Bomaderry.

**28th September - Sunday** - Muir House Art Gallery Artists in Action Day 10am-3.30pm 10 Prince Alfred St Berry. Enq: 4464 1476.

**1st October - Wednesday** - Berry Computes for Seniors - contact Kevin Watson 4448 6267.

**2nd October - Thursday** - CCB Meeting, Berry Courthouse, 6.30pm.

**5th October - Sunday** - Berry Markets, 8am-2.30pm Berry Showground. Enq 4464 1476.

**15th October - Wednesday** - Berry Computes for Seniors - contact Kevin Watson 4448 6267.

**18th October - Saturday** - Zonta Birthing Kit Assembly Day @ Berry School of Arts. Register with Mary on 4464 1191.

**19th October - Sunday** - Ludwig Treviranus (piano). Works by Haydn, Chopin, Grainger and Mussorgsky. Nowra School of Arts 2pm.

**21st October - Tuesday** - Berry & District Garden Club, St Luke's Hall, Princess St, Berry. Adrian Bishop 4464 3965.

**23rd October - Thursday** - The Australian Decorative and Fine Arts Society Lectures for 2014, at the Berry School of Arts at 7:30 PM, A Brazilian Odyssey – the works designer, Roberto Brule Marx.



## Mary's Book

**Events and major attractions around Berry** - For further information regarding each event please refer to community group listing on the next page.

<b>January 30th-31st 2015</b>	Berry Show Society Annual Berry Show
<b>June 17th-24th</b>	Berry Alliance host Seniors Week celebrations – Berry
<b>June 24th</b>	Berry Rotary Club presents the Berry Celtic Festival
<b>AUGUST Each Year</b>	Berry Alliance presents a three week event:
<b>AUGUST 5th-27th</b>	Le Tour de Berry For more information, Contact: tourdeberry@berryalliance.org.au (m) 0449 569 059 or writing to P O Box 202 Berry 2535.
<b>August 2nd &amp; 3rd</b>	Annual Camellia & Floral Show
<b>September 5th-6th</b>	Berry Small Farm Field Days
<b>September 11th-14th</b>	Berry Garden Clubs Annual Garden Festival

## Fire Permit Update (19)

Although fire permits are no longer required, property owners must still exercise caution and follow guidelines outlined on the RFS website: <http://www.rfs.nsw.gov.au/>

**Any inquiries can be forwarded to the Shoalhaven Fire Control Centre on (02) 4424 4424 between 8am and 5pm Monday to Friday.**

# Support locally owned businesses.

**J2BUILD** SOUTH COAST

### BUILDING THE WAY YOU IMAGINED IT.

J2 Build has just launched on the South Coast.

Jacques is an award winning master builder specialising in architecturally designed homes with minimal ecological footprint.

To discuss your plans call  
0404 077 004

[www.j2build.com.au](http://www.j2build.com.au)



**ACCESS**  
STORAGE CENTRE



- Household & Commercial Storage
- Climate Controlled Wine Storage
- Units individually alarmed
- Boxes & Transportation Arranged
- Free Move in Service

Ph: **4422 1955**

Cnr Meroo Rd & Victa Way  
Bomaderry

# Berry Community Groups

If your Berry Community Group is not listed here please return the form sent out or contact the Berry Alliance for the form to complete to register.

<b>Berry Alliance Inc.</b> PO Box 202 Berry 2535 info@berryalliance.org.au	<b>0449 569 059</b> www.berryalliance.org.au
<b>Berry Alliance Town Crier</b> PO Box 202 Berry 2535 towncrier@berryalliance.org.au	<b>0428 037 572</b> www.berryalliance.org.au
<b>Berry Chamber of Commerce &amp; Tourism Inc.</b> PO Box 216 Berry 2535 info@berry.org.au	<b>4464 3122</b> www.berry.org.au
<b>Amnesty International Berry Local Action Group</b> PO Box 397 Berry NSW 2535 Meet - 3rd Thursday each month at 5.30pm, St Luke's Anglican Church, 68A Princess Street, Berry info@berrymamnesty.happenings.id.au	<b>4464 2879</b> www.berrymamnesty.happenings.id.au
<b>Australian Decorative Fine Arts Society - Shoalhaven</b> PO Box 269 Berry NSW 2535 Monthly, 7.30pm at Berry School of Arts	<b>4423 5588</b> shoalhavenadfas@bluebottle.com
<b>Australian Red Cross</b> PO Box 249 Berry 2535 1st Wednesday each month at 2.00pm, Berry Uniting Church	<b>4464 2612</b>
<b>Australian Labor Party Berry Shoalhaven Heads Branch</b> 78 Woodhill Mountain Rd Berry 2535 2nd Wednesday Monthly, Hotel Berry, 6.30pm meeting	<b>4464 3965</b> adriandee@bigpond.com
<b>Berry Alcoholics Anonymous</b> Meets every Thursday Night at 7.30pm 34 Alexander Street Berry www.shoalhavenaa.com.au	<b>1300 903 392</b>
<b>Berry Al Anon Family Group</b> For family & friends of problem drinkers Meet every Tuesday at 7pm Berry Uniting Church Hall, Albert Street, Berry	<b>4448 8231</b>
<b>Berry Bridge Club INC</b> PO Box 366 Berry 2535 Meets Saturdays @ 12.45pm-4.30pm at the Masonic Lodge Community Hall	<b>4422 3343</b> mareaaalen1@bigpond.com
<b>Berry Community Activities Centre Inc.</b> Berry Community Craft Cottage 12 Prince Alfred St Berry 2535 1st Monday Monthly, 5pm @ Muir House - berrymarkets@bigpond.com	<b>4464 1476</b>
<b>Berry Computers for Seniors</b> PO Box 103 Berry 2535 1st & 3rd Wednesday monthly, 10 – 12noon Uniting Church Hall, 69 Albert Street Berry	<b>4448 6267</b> berrycfs@gmail.com
<b>Berry Community Pre-school</b> PO Box 143 Berry 2535 berrypreschool@bigpond.com	<b>4464 1764</b> www.berrypreschool.org.au
<b>Berry Courthouse Conservation Committee</b> PO Box 218 Berry 2535 2nd Monday Bi-monthly at 5.30pm at the Berry Courthouse	<b>0458 369 266</b>
<b>Berry Crafters &amp; Quilters</b> Meets each Wednesday 10am – 4pm at Muir Cottage, Prince Alfred Street mford.646@gmail.com	<b>4464 3788</b>
<b>Berry &amp; District Garden Club</b> PO Box 122 Berry 2535 3rd Tuesday Monthly, 7.30pm St Luke's Church Hall, Princess Street adriananddee@bigpond.com	<b>4464 3965</b> www.berrygardens.org.au
<b>Berry Drama group</b> Lesley Carter Facebook: Berry Drama Group	<b>4421 6565</b> berrymusuem@bigpond.com
<b>Berry &amp; District Historical Society Inc.</b> PO Box 153 Berry 2535 3rd Monday Monthly, 1pm at the Berry Museum	<b>4464 3097</b> berrymusuem@bigpond.com
<b>Berry Ethics Society</b> PO Box 363 Berry Meets 1st Monday of each month at the Berry Hotel	<b>0451 153 332</b> berry.ethics@gmail.com
<b>Berry Evening View Club</b> PO Box 76 Berry 2535 3rd Wednesday monthly, 7pm Berry Bowling Club	<b>4464 1032</b> pamcoles@optusnet.com.au
<b>Berry Rotary Club</b> PO Box 81 Berry 2535 Every Thursday 6pm for 6.30pm at Bowling Club	<b>4464 3636</b> smithgf@bigpond.com www.berryrotary.org.au
<b>Berry Landcare</b> PO Box 422 Berry NSW 2535 See monthly article for working bees.	<b>4464 2198</b> berrylandcare@gmail.com
<b>Berry Leprosy Mission Auxiliary</b> 17 Gwenda Avenue Berry 2535 3rd Thursday Bi-Monthly (June, Aug etc.) 1.30pm above address.	<b>4464 1693</b> trish.n@optusnet.com.au
<b>Berry Masonic Village Auxiliary Inc.</b> PO Box 435 Berry 2535 3rd Wednesday monthly, 9:30am Activities Room Berry Masonic Village	<b>4464 1774</b>
<b>Berry Meals on Wheels</b> PO Box 221 Berry NSW 2535	<b>4464 1604</b> 3rd Monday monthly at 9am RSL Hall Berry
<b>Berry Men's Shed</b> PO Box 103 Berry 2535 Tuesdays and Thursdays 10am- 4pm North Street Berry	<b>4464 3956 / 4464 2619 A.H</b> e: richardcwiseman@hotmail.com www.berrymensshed.com.au
<b>Berry Playgroup</b> St Luke's Church 68a Princess St, Berry. Fridays 9.30-11.30 Ph: 0400 879 800 Facebook: The Berry Playgroup Email: berryplygroup@hotmail.com	
<b>Berry Public School P&amp;C Association</b> PO Box 222 Berry 2535	<b>4464 1158</b> berrypandc@gmail.com
<b>Berry RSL Sub Branch</b> PO Box 3307 North Nowra 2541 1st Tuesday Monthly at 9.30am Sub Branch Hall-26 Alexandra St Berry	<b>4423 1960</b> stuart.christmas@defence.gov.au
<b>Berry School of Arts</b> Office open Thurs and Fri 10am till 3pm.	<b>4464 1476</b>
<b>Berry Show Society Inc.</b> PO Box 173 Berry 2535 Meet 1st Tuesday monthly at Committee Rooms at the Showground berryshow@virtualcity.com.au	<b>4464 1567</b> www.berryshow.org.au
<b>Berry Showground Management Committee</b> PO Box 443 Berry NSW 2535 Meet 2nd Monday Bi-monthly 7.30pm Old Council Chambers 24 hour Caretakers / Bookings - Caretakers	<b>4448 6093</b> <b>0427 605 200</b>

<b>Berry Silver Band (est. 1897)</b> 6 Clarence Street Berry 2535 Meet Monday evenings 7.30-9.30pm, Agricultural Hall, Berry Showground	<b>Owen 4464 1250 / Kaye 44651240</b> kayecj@westnet.com.au
<b>Berry Spinners and Weavers</b> PO Box 377 Berry 2535 Thursdays 10-12noon at Berry Showground Hall	<b>4448 7575</b> berryspinnersandweavers@gmail.com
<b>Brogers Creek Landcare</b> 53 Wattamola Rd Wattamola NSW Last Saturday of each month 2.30-4.30pm.	<b>4465 1482</b> Andrew.fitzsimons@det.nsw.edu.au
<b>Cantares: Community Choir</b> Monday 7.30 - 9.00 pm Scots' Presbyterian Hall, Alexandra Street Berry	Contact: Peter Dalmazzo <b>4448 6164</b>
<b>Country Women's Association - Berry Branch</b> PO Box 321 Berry 2535 2nd Friday each month at 1pm in the CWA Rooms.	<b>4464 3187</b> marcia@shoalhaven.net.au
<b>David Berry Hospital Auxiliary</b> PO Box 285 Berry 2535 2nd Monday Monthly, 12.30pm David Berry Hospital Conference Room	<b>4464 1774</b> bke25349@bigpond.net.au
<b>Freemasons Lodge Broughton No. 131</b> PO Box 2092 Bomaderry NSW 2541 Secretary: John Dyason	<b>4421 7346</b> lodgebroughton131@gmail.com
<b>Gateway Community Garden,</b> 141 Woodhill Mountain Rd All welcome, plots available.	Contact: Tony Hampson <b>44641504</b>
<b>Hands Across NSW Inc</b> PO Box 162 Cambewarra NSW 2540 Meets 1st Sunday, monthly at Broughton Lodge, Berry Agriculture Hall	<b>4446 0567</b> hands.across.nsw@gmail.com
<b>Jaspers Brush Airport Action Group Inc.</b> PO Box 428 Berry NSW 2535 Meeting - as convened	info@takeaction.org.au <b>www.takeaction.org.au</b>
<b>Knit with Love</b> c/- 34 Princess St Berry 2535 - terryandlyn@gmail.com Meets Friday 1pm – 3pm St Luke's Anglican church hall starts 8/2/2013 except Dec/Jan	<b>Lyn 4464 3651</b>
<b>Liberal Party of Australia - Berry Branch</b> 121 Kangaroo Valley Rd Berry 2535 Meets 1st Monday of the month 6.30pm for 7pm start at Gabbys of Berry	<b>0412 550 480</b> hartwell@bigpond.com
<b>Lodge Broughton 131</b> PO Box 2092 Bomaderry NSW 2541 1st Wednesday monthly Agricultural Hall cnr Albany & Victoria Sts	
<b>Mainly Music</b> Berry Community Church hall – for children under five and parent /carers Meets Tuesdays during school term 10-11.30am \$4 per family	<b>4464 1693</b>
<b>Penwood Rail Road Inc.</b> B215a Princes Highway Jaspers Brush 2535 Running day - 1st Sun monthly - visitors welcome	<b>4464 1201</b> johnandlynclark@bigpond.com
<b>Probus Club of Berry</b> PO Box 68 Berry 2535 Meets 2nd Tuesday monthly, 9.30am Berry Masonic Village Hall	<b>4422 9340</b> hughmc0803@gmail.com
<b>RedBerry Quilters</b> PO Box 324 Berry NSW 2535 4th Friday monthly @ Grandstand Berry Showground 9.30am-1.30pm	<b>4464 2587</b>
<b>Shoalhaven Arts Society Inc.</b> Meets every 2nd Thursday, 12.30 - Berry School of Arts	<b>Hazel Hensler 4422 1794</b> editor@shoalhavenartsociety.com
<b>Shoalhaven Historic Vehicle Club Inc.</b> PO Box 1, Nowra NSW 2541	<b>4464 1723</b> abinnington@shoal.net.au
<b>Shoalhaven Poultry Group</b> 161 Kangaroo Valley Road info@shoalhavenpoultry.com.au	<b>0410 548 704</b> 1st Wednesday each month above address www.shoalhavenpoultry.com.au
<b>St Vincent de Paul Society</b> PO Box 77 Berry 1st Monday monthly 7.30pm St Patricks Church Hall	<b>0410 548 704</b> e info@shoalhavenpoultry.com.au
<b>Transformers Youth Group</b> St Luke's Anglican Church 68a Princess St Berry Meets every Friday 7-9pm during school term. Contact Grant Abbott, Youth Minister	<b>4423 5652</b> office@berry.anglican.asn.au
<b>Zonta Club of Berry</b> PO Box 302 Berry 2535 Meets 4th Tuesday monthly for dinner.	<b>Ph-0411318193(Jean) or 42322881(Lorna)</b> email-berry@zontadistrict24.org Website-www.zontadistrict24.org

## SPORTING GROUPS

<b>Berry Hockey Club</b> PO Box 4055, Nowra East NSW 2541 hj.simms@bigpond.com	<b>0412 218 704</b> www.berryhockeyclub.com.au
<b>Berry Netball Club</b> 1 Barwon St Bomaderry Meets monthly at the Great Southern Hotel	<b>0417 285 789</b> MT816834@bigpond.net.au
<b>Berry Men's Bowling Club</b> PO Box 139, Berry NSW 2535 Ph: 0488 729 229	<b>David Armstrong 44641543</b> Harry Harrop on <b>44643043</b>
<b>Berry Junior Mixed Touch Football</b> 7 Boran Place Berry 2535 School term 4 – Thursday 4pm till 6pm at the Berry Sporting Complex, North St Berry	<b>0431 530 543</b> becandtom2@bigpond.com
<b>Berry Riding Club</b> 445 Coolangatta Road Berry 2535 jasli@bigpond.net.au	<b>4464 1143</b> 1st Tuesday monthly at the Berry Hotel www.berryridingclub.com
<b>Berry Shoalhaven Head Rugby League Football Club</b> PO Box 282 Berry - Meet every 4th Wednesday, 7pm Great Southern Hotel, Berry.	Email: Wdstrong@bigpond.com
<b>Berry Shoalhaven Heads Cricket Club</b> PO Box 206 Berry NSW 2535 2nd Monday of each month during cricket season at the Berry Hotel	<b>0422 688901</b> www.bshcc.nsw.cricket.com.au
<b>Berry Shoalhaven Heads Junior League</b> PO Box 162 Berry 2535 First Tuesday of the month, 7.30 pm at The Top Pub.	<b>0438 342 722</b> berrjuniorleague@gmail.com
<b>Berry Tennis Club</b> PO Box 133 Berry NSW 2535 7.30pm bi-monthly starting in February each year, Berry Tennis Club, North St Berry	<b>0419 299 234</b> e: berrytennis@hotmail.com

# EMERGENCY 000

Police Assistance Line (non-urgent Police reports) 131 444  
Berry Police 4464 2175 - Fire and Rescue NSW 4464 1008 or 000  
Rural Fire Brigade (Broughton Vale) 4464 1522

# Cantares

(Berry's Own Choir)

After two successful concerts in one day on Saturday 28 June, receiving enthusiastic responses from audiences in Wollongong and Berry, Cantares, Berry's local choir, is ready to begin the second half of the year with plans for another concert. With a catchy collection of folk songs, madrigals and settings of Shakespeare's poems demonstrating the choir's versatility both in style and language, Cantares is also proud of our ability to offer deeply moving presentations of more usual choral works, such as Gabriel Faure's "Requiem" and the Argentinean Kyrie and Gloria from the "Missa Criolla".

The choir has been meeting for 10 years under the highly skilled direction of the distinguished choral conductor Dr Carlos Alvarado, and is fortunate to have the professional expertise of Bethany Morris as our very supportive accompanist. The choir enjoys presenting at a wonderful range of community and public events, such as; Sydney Conservatorium, performing with the Wollongong Symphony Orchestra, competing successfully in eisteddfods, the Canberra Centenary, and at local concerts and folk festivals. Under Carlos' guidance, the choir is continuing to widen its aspirations.

Dedicated new voices are always welcome at Cantares. We rehearse weekly, with sheet music provided and, generally, a rehearsal CD for each voice part. For the more challenging pieces, sections often choose to get together during the week to work on the pronunciation and music, and polish our parts in a social setting. In addition, private lessons with Carlos and Bethany are available by arrangement.

Cantares meets at 7.30pm each Monday during school terms, in Scots' Presbyterian Hall, Alexandra Street, Berry. Please come along and join us.

Enquiries to Teresa 0432 631 612.



# Zonta

Advancing the status of  
women and girls locally  
and internationally.

## Fireside Cocktails and Information Evening

The Zonta Club of Berry is hosting an evening to showcase what Zonta achieves locally and internationally, on Saturday, August 9th at the Enclave, The Arbour, Victoria Street Berry.

Between 5.30 and 8pm guests can sip cocktails and enjoy delicious finger food, whilst learning about our club. Zonta Berry was chartered in 2001 and is part of Zonta International, a world-wide service organisation dedicated to advancing the status of women worldwide. Zonta is affiliated with the UN as an NGO.

Come along, bring a friend and help us raise funds for our Birthing Kit project.

The cost is \$30 pp and bookings can be made on 0428 882 064 (Val).

## Another Birthing Kit Assembly

### Day Coming Up!

Saturday October 18th at the Berry School of Arts has been established as our next Birthing Kit Assembly Day. We aim to assemble 4,000 kits this year, and at a cost of \$3 each, this will bring to 14,000 kits that Berry Zonta has completed. In addition, on the day we will offer volunteers the opportunity to assist us in sewing and stuffing some of our breast cushions, which will be distributed to local hospitals to patients recovering from breast surgery. Please register with Mary Seelis on 4464 1191 if you can volunteer some time on this day. It is always a day filled with great community spirit and enjoyment.

## Notes from our June Meeting

Our speaker, Sophie Ray, explained how the Shoalhaven Education Fund raises funds to support young students, aged between

17 and 21, who need help to continue their education, training or work. As one of Zonta's goals is to assist girls and women as they continue to pursue their studies, this fits very well with our aims. The SEF works under the auspices of the Country Education Foundation of Australia, and has already established avenues for identifying and assisting young people. Our club looks forward to a close working partnership with this group.

## Coffee and a Chat

A new time has been set aside for members and anyone interested in Zonta to relax, grab a coffee and get to know one another. During the third week of the month at 10.00am, we will meet at Our Book Shop and Cafe, alternating between Tuesday and Thursday.

Thursday, August 21st is the next meeting date, so hope to see you there.

## Sewing Day

On Friday 20th June, 8 Zontians and 3 visitors had a very busy morning putting together breast cushions and drip drainage bags at Margot's home. Between them they worked 50 hours and finished 15 breast cushions and 10 drip drainage bags. Bags and cushions were also taken home to be finished off, and we now have some volunteers who work from home helping us provide this service to those recovering from breast surgery in our local hospitals.

## Meeting Details

Dinner Meetings are held on the fourth Tuesday of the month at Gabby's, Berry, 6.30 for 7. Please call Mary Seelis on 4464 1191 to book. Visitors are most welcome.

**PR and Communications**



*come and discover  
real produce from real producers*

---

*Every Month*  
**2nd Saturday & 4th Sunday**  
**Now from 8:00am 'til 2:00pm**

---

*New & seasonal produce at each market*

---

Andrew Place Park  
102 Queen St, Berry  
(Behind the Newsagent)

Find us on  
 Facebook

Local producers contact Tricia on  
0425 842 909 for stall enquiries

## Tapas on the Mountain

### every Friday night

overlooking the lights of the Shoalhaven

## The Lookout

Cambewarra Mountain

live music
great food
magic views

from 6pm bookings 4465 1321  
1 Cambewarra Lookout Rd



# LANDCARE BERRY

The Regeneration of a Lantana infested gully: Seven years ago Ian and Linda Parker moved from the city to their property "Cedar Downs" just below the escarpment in Jaspers Brush. The property appeared small for 2 hectares because only half was accessible, the remainder being a gully covered in a thick blanket of 3m+ high Lantana that had been there since about 1989. It was so dense it took 8 hours with a machete to cut a path through to the far corner. It took 2 years for them to clear the Lantana. Most was killed by Linda's hand (cut stumping). The splatter gun method of poisoning made it much easier once they had paths through the Lantana to splatter effectively. They record 500 hours labour on the gully in one year.

When the South facing gully had been hand cleared regeneration of native plants occurred swiftly. Where the glyphosate splatter gun method had been used it took considerably longer for regrowth. The glyphosate may have affected the native seed stock that usually survives in the ground. The gully is now well covered with native plants and is virtually weed-free. This was achieved without the planting of new native plants. Thanks to half a dozen existing mature red cedars that were not straight enough for the cedar getters, there are now thousands of red cedar seedlings, some now 3-4 metres high. Some of these have been relocated to other areas on the property and to other Landcare and Bushcare Sites. The seedlings have been successfully bare-root transplanted to sites from the banks of the Shoalhaven River to Tindalls Lane North of Berry. The gully also has dozens of beautiful Pencil Cedars, some over 6 metres high. All this has been accomplished in just

six years. The Parkers have maintained a herbarium list of the various native trees, shrubs and climbers now growing. The climbers, especially *Stephania* and *Marsdenia* sometimes need controlling as they can overwhelm slow growing trees like red cedar. This is done by cutting the climber off at the base without killing it. The "Who's Living on my Land" project previously written about has allowed monitoring of fauna activity in this small patch of dense canopy rainforest with great results. The fauna include wombat, wallaby, brush-tailed possum, native rat, green cat birds, wrens and more.. It would seem that the site has "come of age" a few weeks ago when a male lyrebird took up residence and started displaying. Now he has attracted a female to join him. The Parkers chose the name of the property not knowing relevant it would become. They have a photographic record of this resurrection that has taken place on their property which continues to reward their enthusiasm and hard work.

**Local Native of the Month:** Native Milk Vine (*Marsdenia rostrata*). Often mistaken for Moth Vine this common vine leaf is simple opposed to 13cm. long. The central vein is of a strong yellowish colour in contrast to the dark green. It confusingly has milky sap like the Milk Vine. Flowers are pale yellow and fruit are swollen egg-shaped 5 to 7 cm. long. It has 5-20 basal glands.

**Weed of the Month:** Moth Vine (*Araujia sericifolia*). This common invader has leaves simple opposed to 24 cm. long. Its flowers are white /pale pink. Sap is milky. Its fruit is Choko-like 6-10 cm. long. It has 1-5 basal glands. Eradicate by tracing vine back to the ground and remove by hand or scrape the

stem and paint with glyphosate. If ripening fruit is present remove and dispose carefully.

## WORKING BEES FOR AUGUST 2014

**Broughton Vale:** 2 - 4 p.m. Sunday 3 August (please note we now meet on the first Sunday of every month)

**Bong Bong Road:** 9-11am Sunday 10 August

**David Berry Hospital:** 2-4pm

Saturday 16 August

**Mount Coolangatta:** 1-3pm Saturday 16 August

**Camp Quality:** 9 -11 a.m. Sunday 17 August

**Princess Street:** 2-4pm Sunday 17 August

**Mark Radium Park:** 9-10am Friday 22 August

**Bundewallah Bushcare:** 2-4pm

Sunday 31 August

## FOR FURTHER INFORMATION:

**Bong Bong Road -**

Julia Woinarski (4464 2084)

**Broughton Vale -**

Philip Thorniley (4464 2198)

**Bundewallah -** Will Armitage (4464 2241)

**Camp Quality -** Jeanne Highland (4464 1271)

or jhi02047@bigpond.net.au

**David Berry Hospital -** Leslie Pigott

(4464 3241 or lesliepigott@bigpond.com)

**Mark Radium Park -**

Rodney Cole (4464 1475)

**Moeyan Hill -** Bill Pigott (4464 3241 or

wpigott@bigpond.net.au)

**Mount Coolangatta -** Myke Cunningham

(0418 297 435 ) or mcunningham@pci.cx

**Princess St Park -** Diana Coxhead (0433 213 219)

**Strong's Road -** Ian Parker (4448 6359 or

ianlindap@shoalhaven.net.au)

**Tindalls Lane -** Harvey Blue (4464 1880)



Information can also be found at Berry Landcare on Facebook.

## The South Coast's waterfront local



The best of BBQ, by the water. Relax on the Shoalhaven with delicious local produce, expertly crafted cocktails and an all day bar menu. Open for lunch and dinner Tuesday to Sunday. Join us for the Summer Sessions, weekly at 3pm, featuring live music and \$5 jam jar cocktails.

**WHARF RD**  
RESTAURANT & BAR

A SMH Good Food Guide Awards 2014 hatted restaurant

10 WHARF RD, NOWRA | (02) 4422 6651 | ENQUIRIES@WHARFRD.COM.AU | WWW.WHARFRD.COM.AU



# BERRY CWA 2014 *News*

For further information contact either  
Marie 4423 2164, Sandra 4464 2836, the  
CWA website at [www.cwaofnsw.org.au](http://www.cwaofnsw.org.au),  
or the Secretary PO Box 321 Berry 2535



Recently the Berry Branch of CWA indulged in a delectable smorgasbord of gourmet soups. Why? It was a fund raiser for Can Assist; and to complete our lunch we had slice and tea. Sandra Escott, a volunteer from the Nowra Wig Library shared with us the difficulties that clients have when there is a need to have a wig made. There are 160 wigs available that are on an indefinite loan. They are made using baby wool and are suitable for shampooing and drip-drying. It is not recommended that they be worn at home, especially when cooking. Men are not big borrowers as they have an up-to-date hair style that does not require a wig. There is an array of caps, scarves, bandannas and hats available as well. The five volunteers work on a bimonthly roster. This valuable facility has been in the Shoalhaven Hospital for 25 years and is supported by donations.

We have been busy little researchers this year! We have had an exciting time looking at Botswana, and at the last meeting we entered into a world of "feathered friends", studying the wedge-tailed eagle. Mr. Barry Virtue opened our minds to the wonder of a living symbol of power, freedom and transcendence. It is the largest bird of prey - a huge dark creature with long powerful wings, a wedge-shaped or diamond tail, a small neck, a very powerful beak, and huge talons that lock onto their prey. Their vision is among the sharpest of any animal, seeing twice as far as a human, and they can spot a rabbit 2 kilometres away. Their wing span is 1.8 -2.5 metres in width, while their stick nests can be 2 metres in diameter and up to 4 metres deep. Quite a little habitat!

**"The great feathered emperors of the southern sky  
The landscape below them is bare, brown and dry  
And for prey scanning the landscape they hover and fly  
The huge and airborne hunters with death in their cry."**

*Francis Duggan*

They depend on small animals, carrion and roadside kill to keep that power going. This beautiful bird that soars in our skies, so lofty and majestic! You wonder just how it manages to stay aloft.

August will see our ladies making many cakes, relishes etc. as the Land Cookery competition begins. A new cake for us to try is the Zebra Cake. Interesting! No time to sit and chat.

#### HERE'S AN EXCITING DATE FOR YOU TO ADD TO YOUR DIARY:

A book launch "**Love in the Outback**". Deb Hunt, author and emerging literary talent, will talk to guests and sign copies of her book. She applied for and was successful in gaining the position of P.R assistant with the Royal Flying Doctor Service. She packed up her home in London, moved to Australia and met the love of her life. Come along and listen to her story. Contact Jeanette 02 4464 1377 for further information.

Jean Stanfield, Publicity Officer

For further information contact either Marie 44232164, Sandra 44642836, the CWA website at [www.cwaofnsw.org.au](http://www.cwaofnsw.org.au), or the Secretary PO Box 321 Berry 2535.



BERRY CWA PRESENTS

## love in the outback deb hunt

*Author talk and book signing*

**Wednesday 20 August, 1pm**

Presbyterian Church Hall,  
Alexandra Street, Berry

**Tickets: \$10**

(includes Berry CWA's famous afternoon tea!)

RSVP by Monday 11 August,  
[jmdathome@hotmail.com](mailto:jmdathome@hotmail.com) or 02 4464 1377

For more information contact  
Jeanette Dwyer on 02 4464 1377



## Berry Books Fiction Sale

All paperback fiction titles  
are \$5.00 when you pay and  
pick up at 4 Albany Street.

Browse our titles online or make  
an appointment to view.

[www.berrybooks.com.au](http://www.berrybooks.com.au)

Email: [peter@berrybooks.com.au](mailto:peter@berrybooks.com.au)  
Phone 44642260



## Berry Community Church

**We meet at Graham park  
8 Schofields lane Berry**

Sunday service times 9.30 am (with kids church) and 5.00pm

**Activities include Mainly Music, Berry Youth and Homegroups**

**For further information** [www.berrycommunitychurch.org](http://www.berrycommunitychurch.org)  
[brendan@berrycommunitychurch.org](mailto:brendan@berrycommunitychurch.org) (02) 4464 2315

A member of the Baptist Churches of NSW & ACT

**Bringing life to the southcoast and the nations**



## A WINNING COMBINATION

**McGrath**

### **Integrity. Knowledge. Results.**

We are excited to announce the upcoming opening of our Berry office. The McGrath team has grown from strength to strength and are now positioned in Kiama and Berry providing our expert knowledge and service from Shellharbour to the far South Coast. McGrath has built a brand that stands alone in delivery of outstanding results through integrity, rich customer service, high quality advice and premium property marketing.

To find out more call us today.

#### **Mira Edwards**

D 4232 2888

M 0414 247 863

E miraedwards@mcgrath.com.au

W mcgrath.com.au

#### **Marnie Beauchamp**

D 4232 2888

M 0438 289 341

E fomkiama@mcgrath.com.au

W mcgrath.com.au



## Nominations Open 1 - 31 August 2014 Shoalhaven Hall of Sporting Fame

The Shoalhaven Hall of Sporting Fame celebrates the outstanding achievements of Shoalhaven-based elite athletes, sporting heroes and sporting animals in the following three categories:

- Shoalhaven Elite Athlete Category
- Shoalhaven Sporting Hero Category
- Shoalhaven Sporting Animal Category.

Commemorative plaques are displayed in the foyer of the Shoalhaven City Council administration building at Nowra.

Nominations to the Shoalhaven Hall of Sporting Fame will be open during August 2014. Application Forms including Eligibility Criteria are currently available at Council administration building counters, Nowra and Ulladulla, or on Council's website, at: [www.council@shoalhaven.nsw.gov.au](http://www.council@shoalhaven.nsw.gov.au).

Please submit nominations during the official nomination period, 1-31 August 2014, by hand, post or email.

A formal induction ceremony will be held on 28 November 2014 at the Shoalhaven Entertainment Centre.

If you need further information about this matter, please contact Beth Britton, Corporate & Community Services Group on (02) 4429 3372. Please quote Council's reference 27191E (D14/173880).



Berry Evening VIEW Club meets on the 3rd Wednesday of the month, at Berry Bowling Club 6.30 for 7.00pm. For bookings or cancellations please contact Kath Bowley on 4464 1032 before 5.00pm on the Saturday prior to the meeting. Our next coffee meeting will be at Savana in Stan Burt Arcade on Queen Street, 8th August at 10.30. This is a great opportunity to catch up between meetings and it is becoming very popular. Anyone who would like to join us is most welcome. August is our Birthday month, this year we celebrate 34 years of VIEW in Berry, always at the Berry Bowling Club. There have been many changes over the years, both in the Berry club and in VIEW, but our aim remains the same, to help people in need, to sponsor our Learning For Life student and to promote friendship amongst local women. 34 years is something to be proud of, not only for the money we have raised but for the enjoyment it has given us, knowing others benefit from our continuous fund raising. August 20th is our birthday, we will be entertained by the musical group SWAY and our colour scheme for the evening is black, white and red. Several service pins will be presented by National Councillor, Robyn Bursill, for 10, 20 and 30 years of service to VIEW, something else to be very proud of. Congratulations ladies.

Jean Rolfe



## Berry and District Historical Society's current special display at the berry museum is: "100 years of Australian red cross and berry branch of the Australian red cross"

Did you know that 2014 is the Centenary of the Australian Red Cross and of the Berry Branch of the Australian Red Cross?

Come and see this display at your museum about what the Red Cross does today and has done in the past and how your local branch has contributed through the whole of that time. It is an amazing and impressive story. Berry branch has been there for 100 years and is still active and relevant now.

135 Queen Street, Berry 4464 3097

[www.berryhistory.org.au](http://www.berryhistory.org.au)

[berrymuseum@bigpond.com](mailto:berrymuseum@bigpond.com)

Opening hours: Saturday 11am to 2pm

Sunday 11am to 3pm

Mon to Fri in School Holidays  
from 11am to 2pm

Also open by arrangement outside these hours for a visit to the museum as a special event for your group.

HAVE YOU CONSIDERED BECOMING A MEMBER OF THE BERRY AND DISTRICT HISTORICAL SOCIETY AND HELPING RUN THE MUSEUM, ATTEND LECTURES ABOUT THE AREA IN WHICH YOU LIVE AND OTHER HISTORICAL TOPIC OF INTEREST AND OPENINGS OF NEW DISPLAYS. AS A MEMBER YOU WOULD RECEIVE "THE CHRONOGRAPH" ABOUT MUSEUM ACTIVITIES.

## South Coast Yoga

Discover the benefits of Yoga. Yoga is union. Improves strength, flexibility, stamina and balance of the body, and teaches clarity and stability of the mind.

Yoga can be practiced by anyone regardless of age or ability.

**Where:** St Luke's Church Berry

**When:** Mon 9.30am - 11am

Tues 5pm - 6.30pm

**Contact:** Janine Lord

**Ph:** 0422207332

Numbers are limited to small classes for more individualised teaching.



## TRAVELMANAGERS

personally yours

As your Personal Travel Manager I have access to very competitive holiday and travel deals including flights, accommodation, transfers, cruises, tours and travel insurance. Being mobile means I can help plan, facilitate and book your next holiday at your home, office, via phone or email and even over a latte at a local coffee shop 7 days a week.

I look forward to becoming your Personal Travel Manager

**Shayne Tiplady | Personal Travel Manager**

**Phone:** 0410548704

**Email:** [shaynet@travelmanagers.com.au](mailto:shaynet@travelmanagers.com.au)

**Web:** <http://my.travelmanager.com.au/ShayneTiplady>





Well Berry you have done it again; your generous nature never ceases to amaze me - our latest street stall raised \$1880.00! This will go towards the work of the mission overseas. Each month the mission sends information regarding the ongoing work which is called Keeping in Touch. If you are interested in this publication you can download it by going to [www.leprosymission.org.au](http://www.leprosymission.org.au) and this will keep you informed about the work of the Mission.

In the July edition we learnt about the newest project in Nepal - the Participatory Action for Community Empowerment and Development Project (PACED). This project is designed in partnership with TLM Nepal and TLMA. It targets communities in the Chitwan, Makwanpur, and Parsa districts of Nepal. These districts were selected for their high proportion of people affected by leprosy as well as general disabilities. PACED will focus on three main objectives:  
-Improving the social harmony of the target communities  
-Improving the material well-being for the participants  
-Improving the overall health of the participants.

The PACED Project will also employ many of the staff who worked on the CEDAR Project in Nepal which concludes at the end of July. This auxiliary was supportive of this past project and are happy to learn of the new project's advancement. For more case studies log on to [www.leprosymission.org.au/TLM/CaseStudies](http://www.leprosymission.org.au/TLM/CaseStudies).

Our next street stall will be our Christmas one in late November or early December so we will keep you informed. Yes Christmas cakes will also be made again this year to order them contact Trish Nicholson on 4464 1693.

Our next meeting will be Thursday 14th August at 17 Gwenda Ave. Berry (owing to other commitments on the third Thursday).

Many thanks again for your encouragement and support, Trish Nicholson sec/tres.



## Russell's Rant: STOP THE BAGS



We were having a lively discussion on sustainability at last month's Berry Alliance meeting when somebody brought up the subject of plastic bags.

Apparently, I went on a bit of a rant, suggesting that people seemed capable of carrying 6 full plastic bags out of shops, but were incapable of carrying 2 empty re-usable bags in. I then went on to say that our grandparents lived most of their lives without such a "convenience". I think they wanted to shut me up and did so by suggesting that I write a monthly rant, starting with this topic. So, this is the first and depending on feedback, probably the last of Russell's Rants.

The first thing I did was a bit of research on winning hearts and minds. Apparently, what you need is a 3 word slogan. Easy - **STOP THE BAGS**. I thought the next bit would be hard, but it was also easy. I Googled "Plastic Bags Australia" and the top search result was [www.cleanup.org.au](http://www.cleanup.org.au) with all you ever want to know about the subject ( and plastic bottles too, but that's another rant ).

**Here are just 3 facts from the site and there are plenty more:**

- How many plastic bags are produced annually in Australia?  
Answer: **4 BILLION**. That's over 10 million a day. Unbelievable.
- 96% of the bags end up in landfill, with the rest on my fence, after last week's winds.
- 10% of the **5 MILLION TONS** of plastic dumped in the world's oceans annually is from plastic bags. This plastic kills 1 million sea birds and 100,000 sea mammals each year.

So, as the saying goes, if you're not part of the solution, then you're part of the problem, with excuses like:

"I use them as bin liners". What, 10 million a day?

"I've got heaps of Green Bags, but I keep forgetting to take them to the shop".

How about leaving them in the car then? Or putting your car keys inside a bag when you're at home?

"I only use a few bags, so it's no big deal". Did you know that the embedded energy in 9 plastic bags would power the average car for a kilometer?

These things didn't exist 30 years ago and they needn't exist now.

If you want to stop the seabirds and sea mammals getting killed, then change your behaviour and **STOP THE BAGS**.

The views expressed here as in all other articles, are not necessarily those of the Berry Alliance or the Town Crier. For more information and ideas on reducing use of plastic, see page 9.



**SCOTS' PRESBYTERIAN  
CHURCH, BERRY**

**All Welcome!!!**

**Service Time: Sunday 10am**

**Sunday School: Sunday 10am**

**Minister Rev Isaac Jung - 4464 1020**

**Cnr Alexandra Street & Victoria Street  
Berry**

*Our purpose is to  
Love God with our heart, soul, mind and might  
and to  
Love our neighbour as ourselves.*

*Ordinary people worshipping an  
extraordinary God*

**[www.berrypresbyterianchurch.net.au](http://www.berrypresbyterianchurch.net.au)**



**wholebody  
PHYSIOTHERAPY**  
*...dedicated to your wellbeing*

*Mary already practises traditional Japanese acupuncture, and after a recent enlightening trip to Japan, she is utilising an ancient technique called Shonishin. Originating from Osaka, Shonishin is a gentle, non-insertional and painless technique used for children with behavioural issues, sleep problems, digestive disorders and other common childhood ailments. Shonishin promotes good health and can be done by parents.*

**Wholebody Physiotherapy provides treatment for...**

- Acute/chronic conditions • Headaches, back and neck pain
- Biomechanical postural assessment • Exercise prescription/pilates emphasis
- Gaitscan for foot assessment/orthotics
- Incorporating traditional Japanese acupuncture and Shonishin

**Downstairs, 84 Queen Street Berry NSW 2535  
Open Hours: Mon, Wed-Fri 8:30am to 5:30pm**

**4464 2874**



## Council reminding pet owners to requirements under the Companion Animals Act

Shoalhaven City Council is reminding pet owners of the strict control requirements for dangerous, menacing and restricted dogs.

In attempting to protect the community from aggressive dogs or dogs that have exhibited aggression in the past Council's Animal Management Officers have issued a number of menacing dog orders in recent weeks.

Under the Companion Animals Act, Council Officers may declare a dog to be either dangerous or a menace if they attack or threaten someone outside of their property.

Ranger Services Manager, Michael Jarman said pet owners should be aware that hefty penalties apply for not following legislation for dogs declared to be dangerous.

### Penalties include –

- Not having the correct reflective collar on a dangerous dog - \$1320.
- Selling a dangerous/menacing dog (includes gifting it) - \$1320.
- Sell or advertise for sale restricted breed dog - \$1320.
- Not having a dangerous/menacing/restricted breed dog under control in a public place - \$1760.

Mr Jarman said the owners of dangerous or restricted dogs had a responsibility to comply with the Companion Animals Act in order to protect the community from animals that have previously demonstrated aggressive behaviour.

"Owners of dangerous or restricted dogs must comply with each of the control requirements listed under the Companion Animals Act or risk large fines," said Mr Jarman.

"These measures include ensuring that the dog is both registered and desexed and subscribes to the wearing of a collar and muzzles outside the property.

"The dog owner must also clearly display 'Warning Dangerous Dog' signs outside their property and have a current Certificate of Compliance for the prescribed pet enclosure."

"Council's Animal Management Officers will closely monitor the owners of dangerous or restricted dogs to ensure their ongoing compliance with these requirements."

Dog owners must notify their local council of ownership or address changes.

This is a legislative requirement for all NSW residents who own a companion animal.

**CONTACT: Ranger Services Manager, Michael Jarman – 4429 3576**

## Council wins prestigious United Nations of Australia the Environment Award

Shoalhaven City Council has received the Local Government Award for Excellence in Overall Environmental Management at the prestigious United Nations of Australia World Environment Day Awards.

Council was recognised for its extensive environmental management and education programs after taking out the award during Friday's gala function held at Luna Park, Sydney.

Environmental Services Manager, Kelie Lowe said she was very pleased to see Council staff receive recognition for their work in educating and empowering the local community in environmental management and sustainability issues. Mrs Lowe said Council has also received praise for their work in coordinating partnerships and collaborations with local community groups, schools and universities to the betterment of the area's environment.

"It is certainly extremely pleasing and rewarding to receive a highly prestigious United Nations of Australia World Environment Day Award," said Mrs Lowe.

"This Award cements Council's reputation as one of the leaders in delivering environmental management programs within the Local Government framework.

"Council is extremely proud of the area's pristine natural environment, having worked tirelessly with the local community to both protect and ensure the long term survival of the area's many unique ecosystems."

"Through this leadership and the provision of ongoing education initiatives, Council has assisted the local community in reducing water and energy consumption, curb unnecessary habitat fragmentation and improve local biodiversity."

Some of the programs and notable achievements made by Council in the field of environmental management include –

- Implemented over 90 percent of sustainability projects as identified in the Sustainability Action Plan 2012-2015.
- Porters Creek Mini Hydro Project
- Installation of over 90 kilowatts of solar power across high use community buildings.
- Home sustainability programs
- Water catchment workshops
- Catchment and Beach water quality monitoring
- Estuary Health Report Card
- Registering the first Biobanking site in NSW (Garrads Reserve, Narrawallee)
- Threatened Species environmental assessments
- Climate Change Adaptation Plan
- Development of Sustainable Events Policy and Action Plan
- Reclaimed Water Management Scheme
- Regional sea level rise projections and policy response framework

**CONTACT: Environmental Services Manager, Kelie Lowe - 4429 3501**

ADVERTISEMENT

**Gareth Ward MP**  
Member for Kiama



*"On Tuesday 22<sup>nd</sup> July,  
between 2pm and 3pm  
I will be outside the  
Berry Pharmacy at  
113 Queen Street, Berry.  
Please drop by  
and say G'day."*

### Contact Gareth:

P 4232 1082 | F 4232 3577

A 102 Terralong Street, Kiama NSW 2533

E [kiama@parliament.nsw.gov.au](mailto:kiama@parliament.nsw.gov.au)

W [www.garethwardmp.com.au](http://www.garethwardmp.com.au)

Authorised by Gareth Ward, 102 Terralong Street, Kiama NSW 2533.  
This Advertisement was produced using parliamentary entitlements.



**BERRY  
DENTIST**

**Dr Paul del Solar BDS (Syd)**

**AVAILABLE FOR ALL ASPECTS OF GENERAL  
AND FAMILY DENTISTRY  
NEW PATIENTS WELCOME**

**P: 4464 1055 to make an Appointment  
58 Queen Street Berry NSW 2535**

# The retune is coming to Nowra North on 28 July

As the final step in Australia's successful move to digital-only TV, all free-to-air channels in Nowra North will change frequencies on 28 July. After the channels have moved, viewers will need to retune their digital TV, set-top box or digital TV recorder.

The retune will affect viewers in Nowra North who receive their TV signal from the Cambewarra Lookout TV tower. Viewers who receive their TV signal from the Ulladulla or Illawarra TV towers retuned earlier this year, but may now need to retune again.

These moves will free up broadcasting spectrum so that it can be used for new services such as mobile broadband. Just like the switch to digital-only TV, the retune has been carefully planned to make sure the change is as easy as possible.

On or after Nowra North's retune date of 28 July, if people are missing channels, they should retune their digital TVs, set top boxes or digital TV recorder to ensure they continue to receive all available free-to-air digital channels in their area.

The retune will affect most TV viewers in Australia but different areas will need to retune on different dates. The retune is due to be completed nationally by 31 December 2014.

There may be some unavoidable temporary outages to all TV channels on the day of, and the day or two after the retune date. These outages are necessary because of engineering work being undertaken at the TV transmission tower. Any outages are unlikely to last longer than a few hours. Viewers should wait until after 3:30pm on 28 July before attempting to retune their digital television equipment.



To check for expected outages associated with the retune, viewers should enter their address in the mySwitch tool on the Digital Ready website (<http://retune.digitalready.gov.au/>).

Channel changes should not impact on the quality of television transmission or reception across the area. If people continue to experience difficulties with reception on a particular channel, they should contact the relevant broadcaster for more information about reception issues.

## HOW TO RETUNE

Retuning is done using the remote. For most systems, viewers should press the "menu" button on their remote and follow the prompts to retune. If they are having difficulty retuning, they should refer to the manufacturer's handbook or manual, ask a friend or family member to help, call the Digital Ready Information Line on 1800 20 10 13, 8am to 10pm (AEST), 7 days or visit the retune website.

- Most people would have scanned for channels when they bought a new television – retuning follows the same

process. It is often called "auto-tuning", "auto-scanning" or similar.

- Viewers should start by pressing the "menu" button on the remote then look for their "set-up" options.
- Next, they should try to select words like "channels" or "auto-tuning".

Viewers in Nowra North might want to write down their favourite channel, program recording and parental lock settings before they retune, as retuning may delete these settings. Community organisations will also be informed about the retune so they can help spread the word too. Look out for posters and retune factsheets that will be available from the local council.

People living in apartments may be using a shared antenna system. If they are experiencing issues trying to retune their digital TV equipment after their retune date, they should first contact their property manager or body corporate.

The best way for viewers find out when they are likely to need to retune is to visit the website (<http://retune.digitalready.gov.au/>) and type in their address into the "get retune info" box or call the Digital Ready Information Line on 1800 20 10 13, 8am to 10pm (AEST), 7 days.

You can also forward this email to your friends, family or other people in your community who may find it useful.

## WHAT ASSISTANCE IS AVAILABLE?

If people are having difficulty retuning their equipment, you can direct them to check their manufacturer's handbook or manual for instructions on how to retune, ask a friend or family member to help, visit the Digital Ready website (<http://retune.digitalready.gov.au/>), or call the Digital Ready Information Line on 1800 20 10 13, 8am to 10pm (AEST), 7 days.

## the belle property journey

expect the best from us, as that is what we deliver. everything we do is with premium, quality service in mind. it's the fine details of what we do that will make a difference to you - from the support and guidance we give, the communication principles we apply, right through to how we represent your home to the marketplace. feel secure, you are in the hands of professionals.

licensee/ principal

senior property consultant

gary dale - 0418 211 917

nick dale - 0419 425 166

02 4464 1636

[berry.info@belleproperty.com](mailto:berry.info@belleproperty.com)

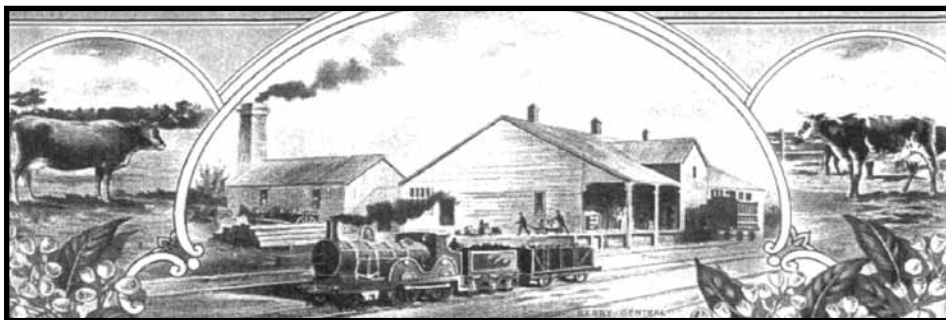
**belle property berry**

122 queen street, berry

[belleproperty.com/berry](http://belleproperty.com/berry)



**belle**  
PROPERTY



# OLDCREAMERY LANE COMPLEX

ESTABLISHED 1895  
OLD CREAMERY LANE • BERRY

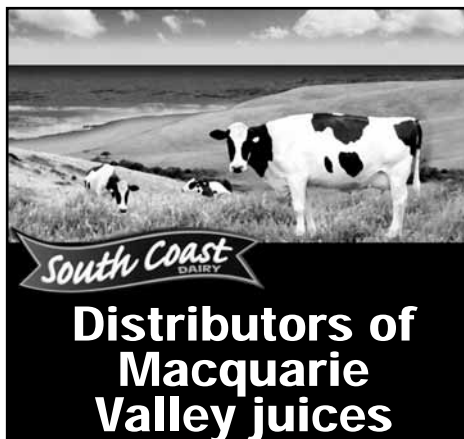


We stock a comprehensive range of Gardening Products, Hardware, Agricultural Products, Stockfeed's, Hard Yakka Clothing, Rossi & Baxter Boots, Wet Weather Gear and Electrical Fence Equipment.

## IN STORE PRODUCTS

Wild Bird Mix 20Kg  
Pool Chlorine Liquid 20Lt  
Layer Pellets 20Kg  
Sulphate of Ammonia 25kg  
Gypsum 25kg  
Pool Salt 25kg  
Pool Chlorine Granular 4kg  
Snail Pellets 1kg  
Coprice working dog 20kg  
Shavings Pine 18kg  
Parrot Mix 20kg  
Potting Mix 30litre  
Sugarcane Mulch 240L  
Mushroom Compost 30litre  
Pure & Healthy Honey 250g, 500g, 1kg  
Straw hats  
Sudden Impact Rose 10kg  
Sudden Impact Lawn 10kg  
Assorted Coloured TUBS 40L  
Now stocking Green Line poly pipe and fittings plus blue line pressure pipe and fittings

OPEN: MON-FRI  
8.00AM-5.00PM  
AND SAT 8.00AM-NOON  
**OLD CREAMERY LANE, BERRY**  
**PHONE 4464 1209**



## SAVE \$\$

### Berry Rural Co-op Self Storage

ALL GARAGE SIZES  
Phone us last for  
the best price

## 4464 1209

Old Creamery Lane Berry



[www.southcoastdairy.com.au](http://www.southcoastdairy.com.au)

## The Treat Factory

60 years of a Family tradition



MANY PRODUCTS MADE RIGHT HERE ON PREMISES

- Gift Box chocolates, rocky road, marshmallow
- Honey, preserved fruits in liquor • Over 50 varieties of jam preserves, chutneys, pickles, vinegars and sauces.

**OPEN 7 DAYS**

OLD CREAMERY LANE - PHONE 4464 1112

## Berry Automotive Repairs

Phone: 4464 3999  
Mobile: 0417 251 205  
2c Old Creamery Lane Berry

**CARS - 4WDS - TRUCKS**

- Late Model & Fuel Injected Vehicles
- Brakes, Steering and Suspension
- Servicing, Repairs & Registration Inspections

[www.wroughtirongates.net.au](http://www.wroughtirongates.net.au)



BUSINESS  
FOR SALE



## THE VILLAGE FORGE™

PHONE FAX 02 4464 3333 MOBILE 0402 418 888

WEB [www.villageforge.com.au](http://www.villageforge.com.au) EMAIL [info@villageforge.com.au](mailto:info@villageforge.com.au)

**Keep it  
local!**  
buy South  
Coast Milk

# Berry Community Preschool

A big wintery thank you to all of the parents and friends of Berry Community Preschool who braved the cold night air to celebrate at the Winter Wonderland Fundraiser held at the Berry School of Art on Saturday, 19 July. Congratulations to the Preschool Social Committee who transformed the venue into a beautiful and magical winter landscape complete with fog, snowflakes and pinecones galore! With 150 guests it was by no means cold inside with the crowd enjoying the delicious and hearty food provided by the Berry Butchery Boys. The grooves went well into the night with The Escalators filling the dance floor.

A night like this is not possible without the kindness and generosity of the community. Our raffle and lucky door prizes as well as the candy bar were all donated by businesses and individuals both local and further afield. A special thank you to the outstanding generosity of Elders Real Estate Berry who donated raffle prizes of the second night at the Ramada Hotel and Suites Ballina, the \$100 of food and beverage at the Point Restaurant Ballina and for a contribution towards the champagne at our event. Thank you also to the following generous donors:

Arbonne Skincare  
Berry Bon Bon  
Berry Butchery  
Berry Chiropractic  
Berry Music Centre  
Berry Original Bakery  
Berry Sourdough Cafe  
Berry Sport and Recreation Centre  
Boutique Yoga, Gerringong  
Dolphin Watch Cruises  
Erinna Imagery, Kiama  
Golly Gumdrops  
Haven & Space  
Huckleberry Home  
Jervis Bay Wild  
My Ginja Ninja  
Oceans Breeze Soy Candles, Nowra  
Ramada Hotel and Suites Ballina  
Ready Set Trot  
Regal Girls  
Regional Express Airlines  
Seabreeze Beach Hotel, South West Rocks  
Shoalhaven Heads Golf Club  
Silos Estate Winery  
SOY by Jean  
The Australian Heritage Hotel, The Rocks  
The Berry Hotel  
The Cake Store, Nowra  
Wharf Road Restaurant & Bar, Nowra



Congratulations to the raffle prize winners. First prize of two return flights to Ballina, two nights accommodation at the Ramada Hotel & Suites Ballina and \$100 of food and beverage was won by Paddy. Second prize of one night at The Australian Heritage Hotel, The Rocks plus \$100 of food and beverage was won by Teresa. Third prize of a weekend getaway to The Seabreeze Hotel, South West Rocks was won by T. Smith. Congratulations to the many other minor raffle prize winners and lucky door prize recipients – too many to mention here!!

Final fundraising for the event was still being determined as we went to print. Stay tuned next month for news of how much we raised and how the preschool plan to utilise the money. Once again thank you to our wonderful and generous community!

## Why advertise in the Berry Town Crier?

The Town Crier is a community newspaper produced monthly by the Berry Alliance. Our current circulation is 2300 copies. The Town Crier is distributed around Berry and its outer lying areas. Additional copies are given to shops, cafes, hairdressing salons, doctors and restaurants within the township to alert tourists as to what's happening around Berry.

### DISPLAY ADVERTISEMENT

#### 1 COLUMN DISPLAY AD

Single rate = \$105 or  
Repeat rate = \$240 (\$80 x 3 issues)  
Dimensions: 10cm high x 6cm wide

#### 2 COLUMN DISPLAY AD

Single rate = \$133 or  
Repeat rate = \$321 (\$107 x 3 issues)  
Dimensions: 10cm high x 12cm wide

#### 3 COLUMN DISPLAY AD

Single rate = \$176 or  
Repeat rate = \$411 (\$137 x 3 issues)  
Dimensions: 10cm high x 18.5cm wide

#### FULL PAGE

Single rate = \$290 or  
Repeat rate = \$798 (\$266 x 3 issues)  
Dimensions: 27cm high x 18.5cm wide

FOR MORE INFORMATION, SEE: <http://www.berryalliance.org.au/advertising-rates-and-requirements.html>

## TRADES & SERVICES Directory



### RAPID LAWN SERVICE

Lawns / Gardening / Maintenance

Call Robert on  
**0417 655 069**  
Email: [rapidlawnservice@outlook.com.au](mailto:rapidlawnservice@outlook.com.au)  
Pensioner Discounts

HERE IS HOW TO GET THE BEST KITCHEN,  
VANITY, FURNITURE, TIMBER WINDOWS,  
DOORS, FLYSCREENS AND JOINERY

### Rybrook Joinery

CALL SCOTT OR MICHAEL

**4422 4600**



### HATHAWAY HEDGES

LANDSCAPE MAINTENANCE

- ALL SIZE LAWNS
- ALL SIZE GARDENS
- ALL SIZE HEDGES
- PLANT SALES
- ADVICE
- QUALIFIED HORTICULTURIST
- OVER 20 YEARS EXPERIENCE



Based in Broughton Village we service Berry and Surrounding Areas

Call Lawrie Hathaway  
**0411 888 333** A/H: 42 342 900

### Roof & Building Repairs

#### Roof Leaks

#### Leak Detection

#### Moisture Problems

**0415 997 977**

[Info@benchmarkbuild.com.au](mailto:Info@benchmarkbuild.com.au)

### Skilled Tradesman...

- CARPENTRY ■ BUILDING
- SMALL RENOVATIONS
- KITCHEN INSTALLATIONS
- MAINTENANCE ■ REPAIRS
- DECORATIVE FENCING & GATES

ABN 42 929 469 808

**Bastiaan (Baz) de Hoon, Carpenter**

Ph **4446 0390** Mob **0405 375 067**

E [sueandbaz1@gmail.com](mailto:sueandbaz1@gmail.com)



### W.P. King Carpentry

WANT TO RENOVATE YOUR HOME OR SIMPLY GIVE A ROOM A MAKEOVER?

We specialise in home improvements, pre-sale enhancements, extensions, pergolas, decks and more.

Wayne **0411 639 233**



## Canine Cardio

Dog Walking & Animal Home Care

Dog Walking | Pet Minding | Doggy Daycare | Overnight Stays

Annette Brooker

0418 477 438

info@caninecardio-homework.com.au  
www.caninecardio-homework.com.au



## Television Antennas SHOALHAVEN ANTENNAS

Servicing Berry and surrounding areas.

- Digital Upgrades
- New Installs
- TV Tuning
- Repair existing systems
- Add Phone/TV Outlets



Phone: 0410 526 672  
Fax: 02 4422 6672

## berry physiotherapy

dr chambers' practice  
alexandra st, berry

belinda henry  
mark burns

branch practice of  
gerringong physiotherapy

ph 4234 4666



Mountain Echo Landscape & Horticulture

- Landscape Design & Construction
- All Aspects of Garden Maintenance
- Fruit & Veg Production
- Broad Acre Property Management

Katie 0424 236 235 Ryan 0409 743 828  
contact@mountainecho.com.au

Mark Collins

## Lawn Mowing Service

Domestic & Commercial

Fully Insured

M: 0401 571 228

ADN: 95 646 587 820

P: 4423 6448 e:markneidi@optusnet.com.au



Berry  
Chiropractic

~ Specialising in gentle,  
low force techniques ~

SAFE, EFFECTIVE TREATMENT FOR:

- All ages; from babies through to the elderly.
  - Headaches/migraines
  - Back/neck pain
  - Postural problems
  - Whiplash
  - Scoliosis
- EFTPOS available  
HICAPS now available

57 Queen Street • Phone: 4464 3414

Arborist

Complete Tree Removal & Care

Reliable Professional Service

Mulch Sales

Stump Grinding

Fully Insured

Dave Kelly

0423 903 946

All aspects of professional tree care.



## Ian's Interior Linings



★ All plasterboard &  
fibrous plastering

★ Commercial & Domestic

M: 0418 220 751

E: willey63@bigpond.com.au

## Country Quilts, Curtains & Blinds

All window fashions and  
soft furnishings  
Drapes, Pelmetts, Tracks & Rods  
Blinds: Timber, Roller & Roman

RING NOLA FOR A  
FREE MEASURE AND QUOTE  
**0414 983 757**

## THE BOUTIQUE GYM

Personal Trainer *Jen Miller*

117 North Street,  
Berry NSW 2535

☎ 0413 648 943

jenmiller65@hotmail.com



## Qualified Gardener



- Pruning
- Weeding
- General Maintenance

Phone Sidney  
**0420 245 143**

## Four Legged Friends PET FEEDING SERVICE

For Horses, Dogs, Cats, Birds  
& all other domestic pets

Megan White  
dip in animal care

Ph. 4464 2472 / 0407 407 328

info@fourleggedfriends.com.au

Established: 1995

• FEEDING • EXERCISING • RUGGING •  
GARDEN • MAIL • GARBAGE

www.fourleggedfriends.com.au



## Wayno's Mowing & Maintenance

0418 247 455

waynosmowing@bigpond.com  
www.waynosmowing.com.au

Fully Insured  
ABN: 59 818 318 984

Acreage and Residential

## HAMILTON EARTHMOVERS

Excavator

Bobcat

12 Tonne Tipper

Cut & Fill

Footings

Auger Drills

Rock Grabs

Rubbish Removal

Road Bases



Ph: 4464 1531

Wayne

0424 399 094

# SNB

S.N.BICKERSTAFF

scott@snbuilders.com

MASTER BUILDERS

LC 35214

New Homes, Extensions  
Renovations and  
Alterations

www.snbuilders.com

ph 44 642 046

mb 0419 614 146

# TRADES & SERVICES *Directory*



**MICHAEL HILL**  
**PAINTER & DECORATOR**  
Quality Work Guaranteed

Domestic Commercial Industrial

ABN 95 969 204 488 Lic No 121389C

**0402474569**

Specialising In

- New/Old work
- Feature Walls
- Roofs
- Texture Coating
- Heritage



**MORROW**  
BUILDING SERVICES  
tomorrows future, built today

Building in Berry and surrounding areas  
Architecturally designed new homes  
Extensions & Alterations, Renovations,  
Bathrooms, Pergolas & Decks

Paul Morrow 0413 887 042  
Email: [morrowbuilding@hotmail.com](mailto:morrowbuilding@hotmail.com)  
Lic: 141931c

**Total Gate Solutions**  
For all your Gate Automation needs

- Installation & Service of Gate Automation
- Solar & 240V
- Farm, Domestic & Commercial
- Wireless Intercom Installation

Phone Lee  
**0409 322 491**



**OPC**  
CONSTRUCTIONS  
quality building, extensions & renovations

new homes  
extensions  
first floor additions  
renovations  
architectural & detailed joinery  
decks & pergolas  
retaining walls  
truck & bobcat hire

BERRY

0414 502 513  
[ao.carter@bigpond.com](mailto:ao.carter@bigpond.com)  
lic.no. 119313C



**BERRY**  
**REMOVALS**

LOCAL • COUNTRY • INTERSTATE

Experience a New Level of Professionalism  
Phone 04 2864 3557 or 4464 3557



**B & B**  
Borg Barter  
LANDSCAPES

CONSULT • DESIGN • CONSTRUCT • MAINTAIN

[www.bnlandscapes.com.au](http://www.bnlandscapes.com.au)  
**0402 255 115**  
Lic No: 262613C



**Southern Scapes**  
ABN 67 991 978 355

Landscape Design,  
Restoration & Maintenance

Office 02 4443 8169  
Mobile 0416 295 556

**Handyman**  
HONEST - RELIABLE - INSURED

Specialising in: Painting, Plastering,  
Home Maintenance, Pressure  
Cleaning, Flyscreen Replacement  
Selling or renovating your home?  
Good Advice & Free Quotes

**CALL COL WHITEHURST**  
**0400 135 128**



**hand made web.**

Local design service

- Websites & online stores
- Search engine optimisation
- Facebook pages & email newsletters
- Logos, stationery & packaging
- Brochures, ads & posters

Check out our portfolio online  
[www.handmadeweb.com.au](http://www.handmadeweb.com.au)  
**0447 674 919**

**TERMITES!**

- ▼ Pre purchase termite inspections and reports
- ▼ Termite barriers new & existing buildings, council approved
- ▼ Thermal imaging and microwave inspection tools
- ▼ Termite Baiting Systems

**FREE QUOTES Call**  
**TERMITE SOLUTIONS-**  
**4448 5444**  
termite experts

Fully Licensed, Accredited & Insured  
Family Business with over 20 years experience

**BERRY**  
**MAINTENANCE**  
**PLUMBING**

**ALL PLUMBING SERVICES**  
Gutters Hot Water Toilet Repairs Leaks

Paul Bramley Licence L5826  
Mobile: **0438 641 046**  
Office: 02 4464 1312



**MISS SPARKLES**  
**SHOALHAVEN**  
External House Cleaning  
**HOUSES FROM \$148**

- ★ Environmentally Friendly
- ★ House/Driveway Packages
- ★ Removal of Cobwebs
- ★ Patios and Driveways
- ★ Mildew Treatment
- ★ Windows/Screens included
- ★ Commercial work
- ★ Seniors Discount

Phone Dennis for a free quote:  
**0407 642 256**

Now Offering: Internal Window Cleaning &  
Licensed/Insured Electrical Work (Lic No. 209514C)

**Vaughn's Lawn & Garden Service**



- Local knowledge
- Professional service
- Fully insured

**0408 863 776**

[www.vaughnsgardening.com.au](http://www.vaughnsgardening.com.au)

**ELECTRICAL**  
CONTRACTOR




**EEPS**  
Lic. No. 133674C

**DOMESTIC & COMMERCIAL**  
Solar Power Installation  
Home Automation Systems  
Security Lighting  
Pools & Spas  
Hot Water Systems  
Oven & Stove Repairs  
Safety Switches  
Smoke Detectors

Contact peter today!  
**0412 594 907 | 4464 1993**

ENDEAVOUR ENERGY AUTHORISED LEVEL 2 SERVICE PROVIDER



**FLOOR**  
**SANDING**

*Coolangatta*  
*Floor Sanding*

SPECIALISING IN OLD & NEW FLOORS  
FREE MEASURE AND QUOTE

PHONE GLEN **4448 7932**  
[www.coolfloors.com.au](http://www.coolfloors.com.au)

# TRADES & SERVICES *Directory*

## CKB CIVIL

All Earthworks  
Landscaping  
Driveways  
Rural Roads



Charlie 0418 429 740  
charlie@ckbcivil.com.au

Lic 244729c



## COMPLETE BATHROOMS AND RENOVATIONS

From a simple leaky shower to a full bathroom makeover and further extensions or renovations to your biggest asset we are here to advise build and manage your project from concept to completion.

For a no obligation free quote or just advice phone  
**0449 668 439**

## DOOR & WINDOW ROLLER & WHEEL REPLACEMENT

Repairs to Doors, Windows, Wardrobes,  
Shower Screens and Flyscreens.

We also supply and fit Flyscreens,  
Security Doors and Window Grilles.

**0411 555 182 or 4446 4753**



**theRollerDoctor™**

## EXPERIENCED BOOKKEEPER

ARE YOUR BOOKS IN A MESS?

DON'T STRESS!

SPECIALISING IN MYOB  
OPERATING SYSTEMS, INCLUDING BAS,  
PAYROLL AND SUPERANNUATION SUPPORT.  
CALL YVETTE ON 0403 155 504

**I CAN HELP!**

BAS & Payroll qualified FNSBKG404A405A 2011



— YOUR HOME IS IN GOOD HANDS —

Maintenance, Repair & Renovation Specialist

"I can help with those odd little jobs that  
never seem to get fixed or a bigger project  
like a new kitchen or bathroom"

Lic # 218008C

For a friendly free quote - Glynn 0423 384 072

## BELLETTTE ELECTRICAL & AIR CONDITIONING

All Electrical work

Reverse Cycle Split & Ducted

Air Conditioning

Sales Service Installation

**Alex Bellette 0421830261**

Lic No 209618C



design | build | restore  
craftsmen in all aspects of traditional  
& contemporary stone work

Visit our website for a range  
of Natural Stone Solutions

[www.stonehedgemasonry.com.au](http://www.stonehedgemasonry.com.au)

50 LIDBETTER RD BERRY NSW 2535

BRETT HOFMAN: 0402 406 192



## Southern Tree Service

- Qualified Arborist
- Qualified Horticulturist
- Tree care and maintenance
- Expert trimming and tree removal in confined areas
- Chipper • Mulch
- Advice on replacments
- Stump Grinding
- Fully Insured

Paul Gillen

Ph/Fax 4464 2822 • Mobile 0407 405 968

remedial & relaxing massage,  
oncology massage,  
naturopathic advice,  
auro-soma colour,  
living energy treatment;  
for body and soul!



lauren cunio **4464 1060**

[www.berrymountain.com.au](http://www.berrymountain.com.au)

## LOOK MOBILE MECHANIC LOOK AND MACHINERY TRANSPORT

- LAWN MOWERS
- TRACTORS & MACHINERY
- LIGHT TRUCKS
- 4WD & UTES

**0414 800 359**

GREG LYNCH MOBILE FARM SERVICE



## ROB PACKER POND & DAM CARE

- Algae & weed control
- Pumps & filtration
- Fish & plants
- Maintenance & repairs

**0409 550 741**

## Foxground Firewood DRY SEASONED SPLIT HARDWOOD

**FREE LOCAL DELIVERY**

PHONE PAUL 0409 669 557



Specializing in Private Road Construction  
& Bitumen Seal

- Driveways
- Carparks
- Decorative driveways
- Fully Insured

Contact Office (02) 4464 1555

James 0416 269 744



**Dwell**  
SOUTH COAST

living . colour . style

- Preparing your property for sale
- Home styling & decorating advice
- Interior & exterior colour consulting
- Sourcing new & unusual furniture

[www.dwellsouthcoast.com.au](http://www.dwellsouthcoast.com.au)  
enquiries@dwellsouthcoast.com.au

Tonya 0447 186 105

Sharlene 0428 852 440



**Computer  
Troubleshooters™**

TECHNOLOGY SOLVED

- Residential or Business we come to you.
- Hardware and software repairs and sales.
- Networking solutions.
- Over 20 years' experience.

**4480 6028**

[www.ctsnowra.com.au](http://www.ctsnowra.com.au)

LOCAL SERVICE - GLOBAL STRENGTH





# The Berry Hotel

120 Queen Street, BERRY [www.berryhotel.com.au](http://www.berryhotel.com.au)

Home of the Alpaca Burger:  
voted by Keith Austin  
'Top 6 Pub Burgers in NSW'  
Good Pub  
Food Guide  
**2014**



**September 19-21**

**FRIDAY:**

Tapping of the Kegs by Mayor of Oktoberfest

**SATURDAY:**

3 x Course German Dinner & Beir

**SUNDAY:**

Family Fun Day

**BOOK NOW**



**LIVE MUSIC**  
FRIDAYS SATURDAYS AUGUST  
**WEEKENDS**  
**NO COVER CHARGE**  
2nd Woody  
9th Rod Mitchell  
16th J Walkers  
23rd Watch this Space  
30th Brock Lette  
Fridays: Have'N Fun KARAOKE

The  
Berry Cup  
CHARITY  
**RACE  
DAY** 2014

Supporting Children  
with  
Special Needs

**Saturday  
September  
13th**

at Kembla Grange Racecourse

**Ticket Includes:**

Coach, Luncheon, Entry & Racebook,  
Afternoon Tea, 3 x Drink Vouchers

**BOOKINGS: MARY 0415 509 321**



**NOAH'S**  
SHOALHAVEN

p. 02 4464 1011 f. 02 4464 2142 e. [info@berryhotel.com.au](mailto:info@berryhotel.com.au)



[facebook.com/TheBerryHotel](https://facebook.com/TheBerryHotel)



@theberryhotel



Smartphone App

**TAB**

**Restaurants . Functions . Accommodation . Live Music**

RESPONSIBLE SERVICE OF ALCOHOL AND GAMBLING

**OFF-STREET PARKING FOR PATRONS AT THE REAR OF THE HOTEL**

